

Orra Van Horn Sep 15

Found stone SE Cor Sect
 Measured West 20.15 ch. N 89° E
 found stone

Measured North 96.9 ch rd
 set stake 29.75
 Total 90.32 to Stone
 N 1° E

S 88° E
 20 22 - division line on
 Northside 60.A Tract.

Measured North 856 Stone Corn
 7.88 N " "

S 2° W

33.91 fence NW
 30.74 Stone
 40.40 fence East
 50.92 fence West

→ 2.66 N of fence

243
 INDEXED ON MAP

T6 R8

2014

March 9th 1922

40.32

29.75

10.58

2022

250.37

20.195

29.75

100.95

141.33

181.71

90.32

60.275

N 86 3/4 W

20.17

.013

.6057

2017.07000

10.03

6057

243.2

Stone

20.24

20.23

4100

19.7

Stone

Stone

Long 60.4 Miles

S 88° E N 86 3/4 W

20.22

Stone

Stone

12° 18' W

40.32

29.74

120° E

30.69

Stone

20.15

N 88 3/4 W

Stone

20.04

100.07

S 2° W

20.04

Stone

Stone

Stone

Stone

Stone

Stone

Stone

Stone

Stone

Stone

Stone

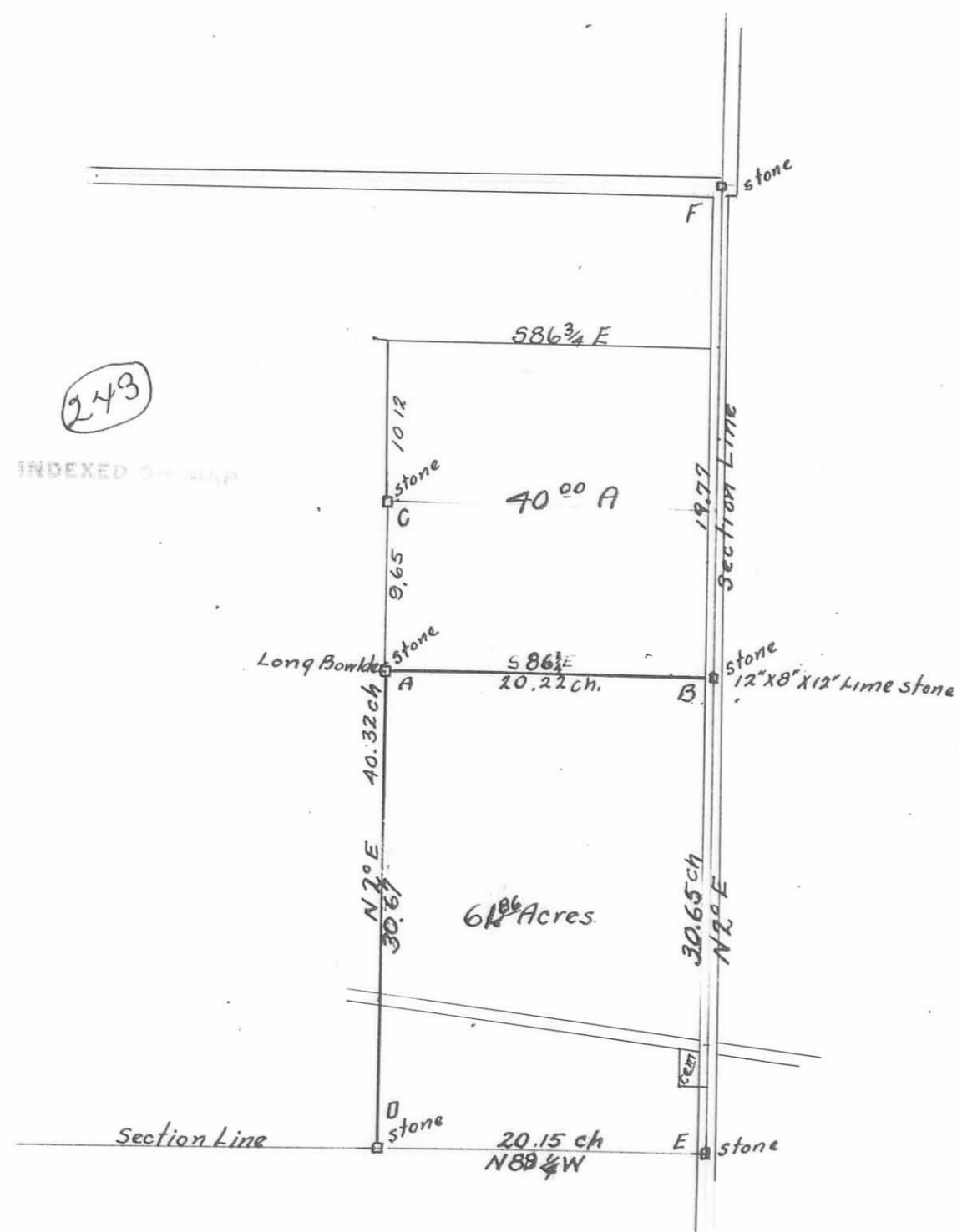
Stone

Stone

Stone

Stone

43A



Part of Sec 15 T6 R8

STOKES TOWNSHIP

for Orra Vanhorn

by W.A. Montgomery Deputy County Surveyor

March 9 1922

A = Long Boulder placed on line with C & D

B = 12"x8"x12" lime stone placed on line with E and F

E = Section Corner See Surveyors Record Vol. C, page 314

Field Notes Book 502 Page 75