

Shelby Co.

Sec 36 T6 R7

Start at a = 7 m out pick line a
 S 81° 45' W at 55.66 ft from 20 links south of 7 sec
 from g of Mid g = benchmark 12° N 22° 34' E 18 links
 also swamp ash 13 S 13° 07' E 212 links
 at a of more stake at a 35.72 east 2 links and north
 16 1/2 links to make right line a d g
 with to d (as at stake) water bench 7 2000 44 links
 also swamp ash 11° 47' 07" E 40 links
 From a west 14.52 to stake d d line
 but not set to ok line a d of more north 2 links
 August 25th 1884. By agreement B. W. Pampfel
 Samuel Craig Kinross appointed for Aug.
 Geo. & S. B. Buchanan met middle of
 N. line Sec 36 T6 R7 and on examining
 the ground in reference to stakes by James Bagge
 and remains of top post of Oak orig stake from 267 =
 16 link set stake for c also from stake 3332 26 links
 and find remains of swamp ash orig and then
 dig at stake and find points of old stakes and the hole
 in which original bee line stake stood. Last stake en-
 tirely rotted and gone. Both stake points and hole of
 orig stake in space 1 foot square. The above stake
 more 41 links east of a. that is from a 55.25
 chains

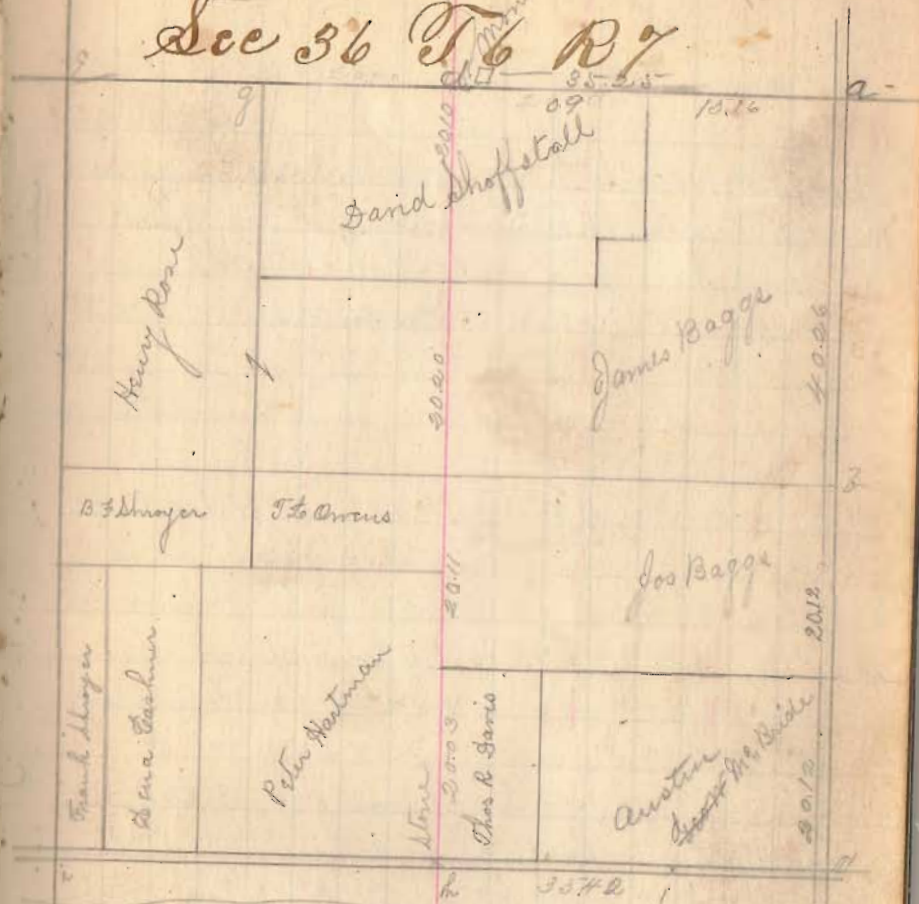
352

INDEXED ON MAP

35.72
35.66
41

26

Sec 36 T6 R7



Old gov field notes Sec 36 as follows
 a = Red Oak 24' x 28" N 100' chimney 11" 664 or 55
 f = Buck 20' x 28" x 36' thick 11 S 24 or 34
 c = Dye 32' S 10 W 11' 4' wash 25' S 52 E 51
 h = Oak 12' corner tree & Red Oak 12' S 45 W 31
 j = wash 12' di. i to j = 60 72' i to e = 78.75' x h = 40.00
 h e = 35.05 d a = 35.04 j h & e d = 40.00
 d = Pigeon Oak 169 or 15 lbs & Oak 8" S 35 E 26