

South bank of State Ditch  
S 77 1/2 E  
5.00 ch

(1029) -1P

INDEXED ON MAP

S.W. Lyon 6.43 a.

Plat of a Tract of Land  
owned by S.W. Lyon.  
in N.W. Qr. Sec. 35. T. 6. R. 8.  
Stokes Township  
Logan County  
Ohio

Oct 16. 1907

H.S. Dailey  
Field Notes  
Book 55  
H.S. Dailey  
Page 31-32

Field Notes  
Book 55  
Page 31-32

131/2 chains

chains

13.16

S 1/2 of tract =  
3.22 a  
(Including rt-of-way)

S 1/2 W

N 1/2 E

84.5'

N. line of Right of Way

54/100 acre  
Right-of-way (I.C. & E.)  
N 77 1/2 W 5.00 ch  
N. line T. and O.C. Rt-of-way

67'

Oct 15-07

Commence meas. at N. line

T & O.C. (wire fence)

- N 1/2 E along E. line

at 1.00 N. line Rt. of way

at 6.60 (1/2 way anchor post)

N. line of ground as occupied

at 13.16 S. bank State Ditch

(S. bank of ditch irregular. look as  
as best as could)

Commence again at S.E. L

- W- with N. line T. & O.C.

O.C. rt. of way fence 5.00

Set mark + on brace post

W. line -

Commence "+" at N. line T & O.C.

- N-

at 6.45 N. line as occupied

(S. side plowed ground)

at 13.12 S. bank ditch

S.W. Lyon meas.

Lake View 35-6-8

31  
Stakes  
up.

Geo. Skoffer

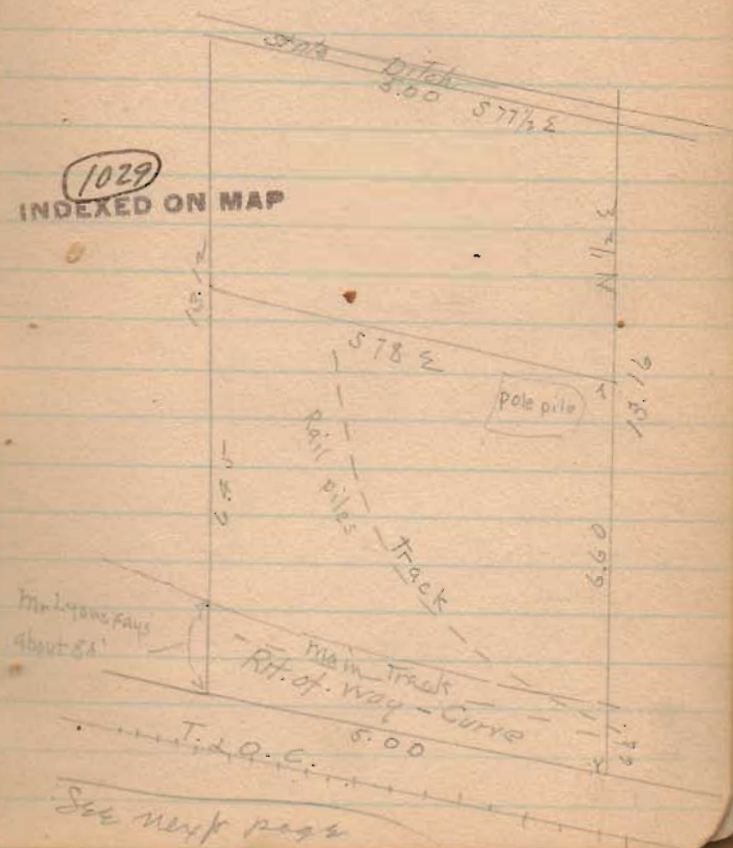
Robt Baubien

ch. or.

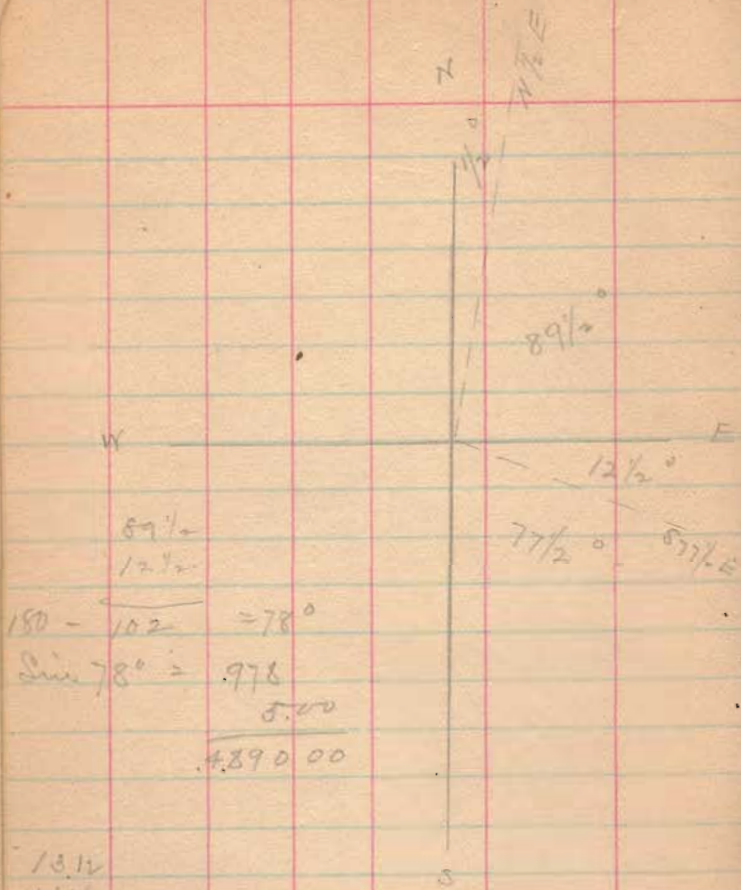
(H.S. Dailey)

N. line, along S. bank ditch  
being 20 rods, E & W, S 77 1/2 E

1029  
INDEXED ON MAP







$$150 - 102 = 78^\circ$$

$$\text{Sin } 78^\circ = .978$$

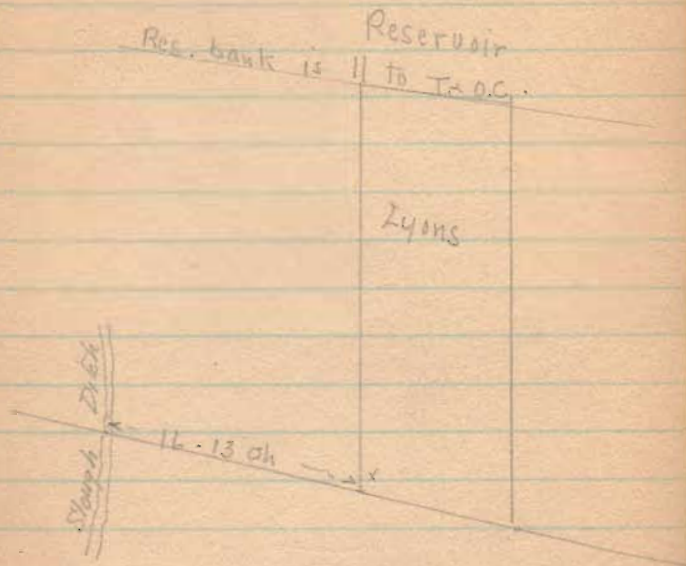
$$\frac{5.00}{.978} = 4.89000$$

13.14  
13.16

$$13.14 \times 4.89 = 6.43 \text{ acres}$$

$$6.43 \div 2 = 3.215 \text{ acres including}$$

Half-way



SW.  $\angle$  of Lyons piece  
is 16 1/3 ch. from cent.  
Shallow ditch, meas. along  
T.O.C. H.-of-way -

(1029)

INDEXED ON MAP