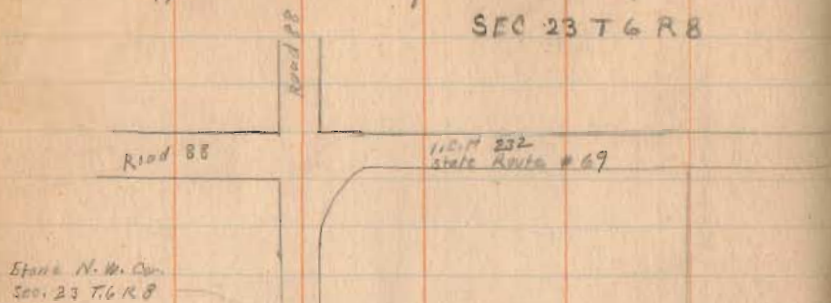


See Drawer R

Coppersmith Survey stakes Twp.
SEC 23 T 6 R 8



See Notes Next Page.
See Warden Notes Book 456

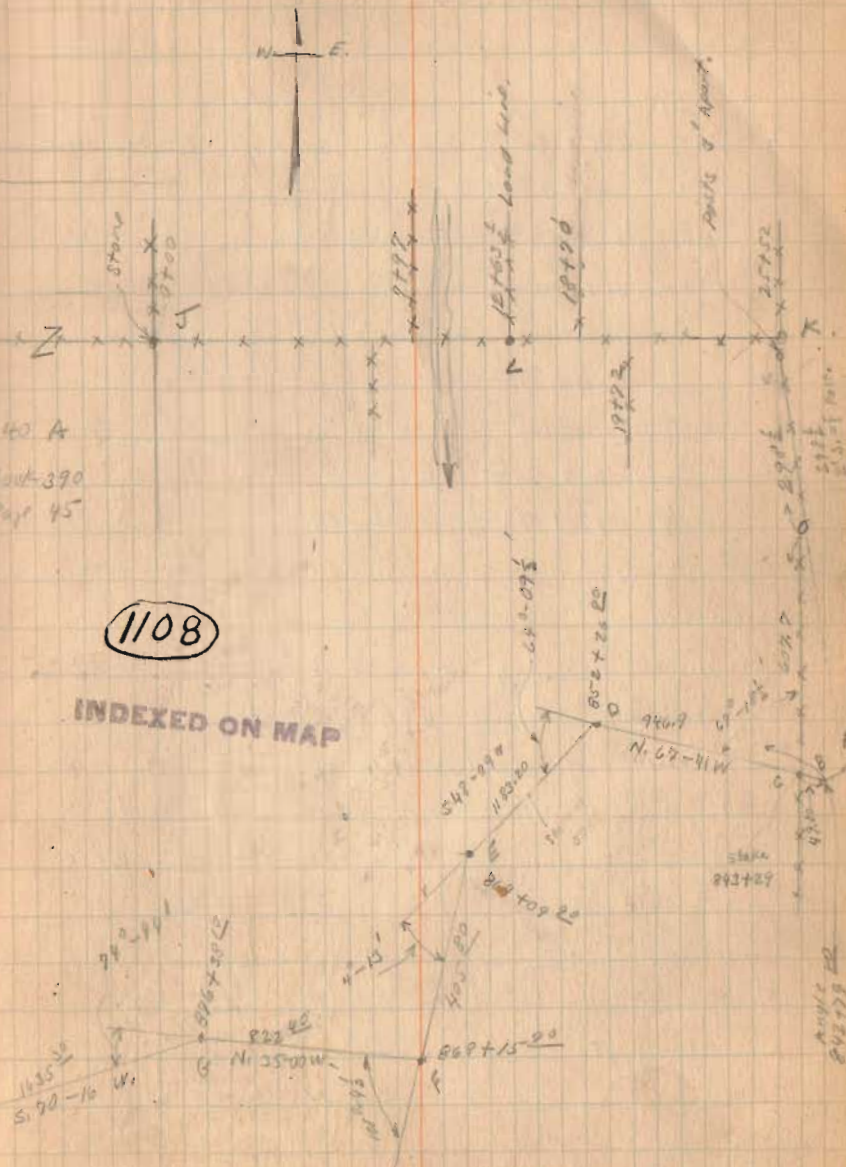


State Stone #39

Fidler 40 A
see Book 390
Page 45

1108

INDEXED ON MAP



(over)

Coppersmith Survey

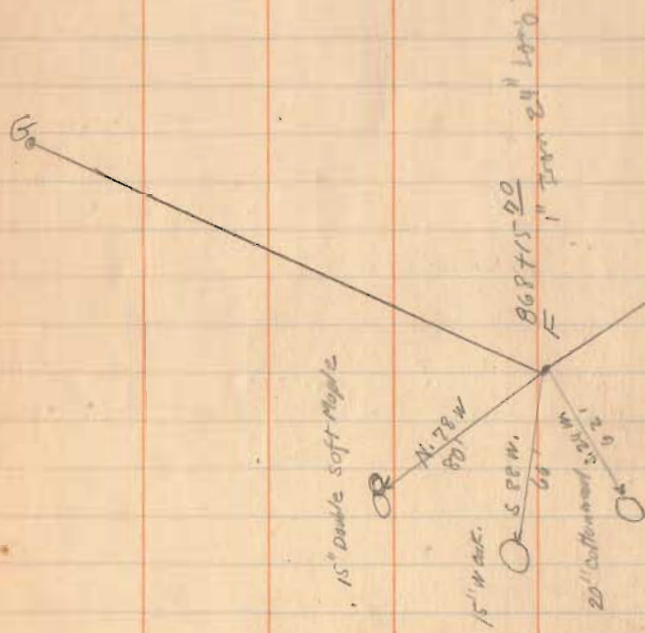
A - Sta.	841 + 26	Wonders Survey	Bark	456	Page 43
B - "	842 + 29 ⁸⁰	"	"	"	" 26
C - "	843 + 29	"	"	"	" 26
	607.7 from Roberts Line as shown				Stake Placed by measuring Bark 456 Page 43
D - Sta.	852 + 26 ²⁰	Wonders Survey	Bark	456	Page 43 also Page 27
E - "	864 + 09 ⁸⁰	"	"	"	Stake Placed " "
F - "	868 + 15 ²⁰	"	"	"	" 27
G - "	870 + 38 ¹⁰	"	"	"	" 28
H - "	872 + 73 ⁴⁰	"	"	"	" 28
I - "	878 + 49 ¹⁰	"	"	"	" 30
					State Stone # 39 Found
					" 44

Established C by measuring 607.7 As shown
started at C and ran as shown. Found
error in my angle turned so started
at I as shown on Page 38 and
using Wonders' water run from West
to East

J stone found
K Post.

(continued Page 38)

Copper smite Survey



864+09 20
 Hard Iron
 Part of face pit

861+00
 20" Coffinwood

41'-8"

858+10
 12" 12'0"

Dark wire grass
 into two other
 trees

852+26 20
 5'-8"

(over)

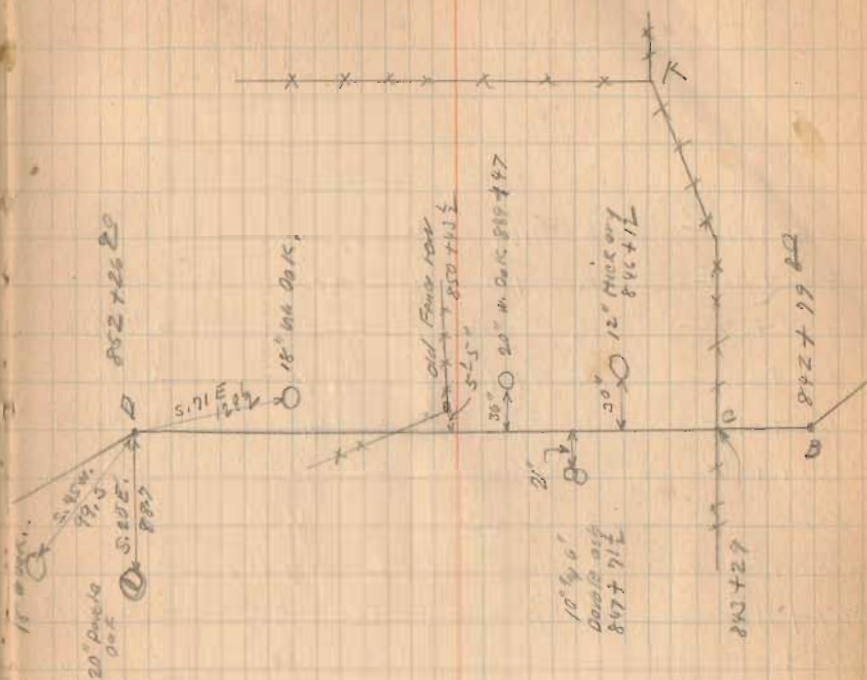
Coppersmith Survey

From C To B stakes were placed at every station.

Ohio To Walters Vol. 65 Page 4 1882
 140 ⁴⁵/₁₀₀ Acres Plat Book shows 82.81 in Sec. 23
 Stone To Water 88.7 Poles = 1463.55
 This is E. line.

Roberts line To Water. at Mill line
 50 Poles = 924.0'

Walters To Coppersmith Vol. 133 - Page 49



852 + 26.20
 850 + 43.50
 1783.50

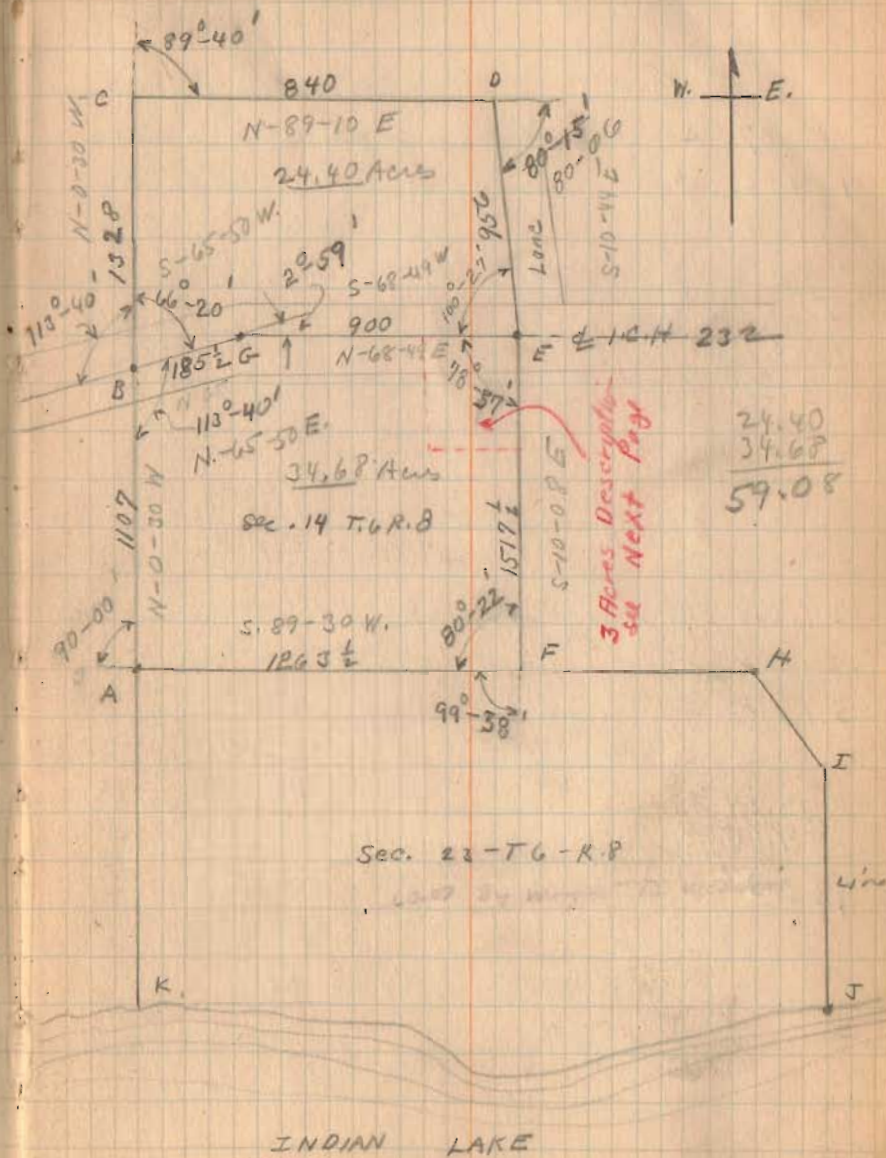
Coppersmiths Survey

- A - Stone same as J page 34
- B. $\frac{1}{2}$ I.C.H.
- C - Post
- D - Post $\frac{3}{4}$ Stone
- E $\frac{1}{2}$ I.C.H.
- F Post same as L Page 34

Measurements from Walter's Deed as follows

Line	Measurement	Distance	Notes
EF	90 Poles =	1485.0'	Vol. 65 Page 4 57.59 Acres
ED	$58\frac{1}{10}$ "	958.65'	
DC	$50\frac{1}{10}$ "	828.30'	
CB	80 "	1320.00'	
BA	$65\frac{3}{10}$ "	1075.80'	
AK	$88\frac{2}{10}$ "	1463.55'	
CK	$233\frac{9}{10}$ "	3859.35'	
FH	$76\frac{8}{10}$ "	1267.20'	
H.I.	$18\frac{1}{10}$ "	298.65'	
IJ	50 "	924.00'	

June - 11 1929
Warm
Windy
M. S. Kirshen.



Coppertsmith Survey

Acres By Weight

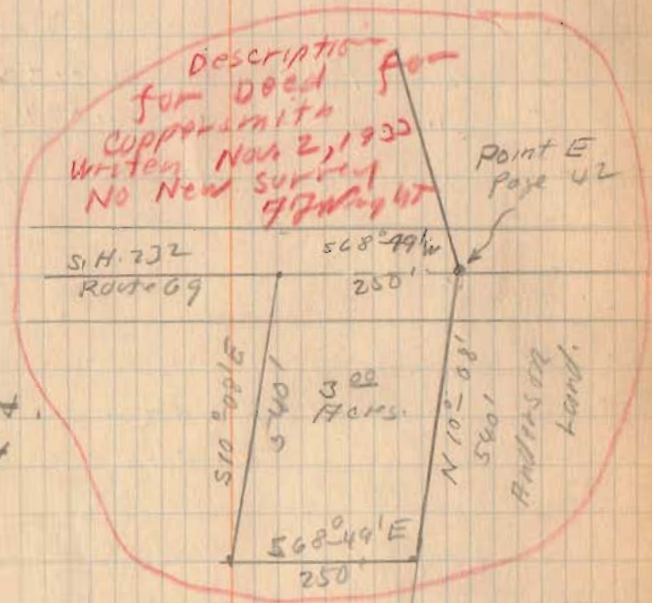
60.07 Acres Between section line and
 + 1.82 " South of Rose Line ^{9/4} North
 61.89 " "
 - 4.04 " South of 50' line ^{9/4} North of
 57.85 " South of sec. line ^{9/4} North of
 15.39 " Between 49' ^{9/4} 50' line.
 73.24 " Total sec. line to 49' line.

34.68 Acres in sec. 14 South
 24.40 " " " " of h.c.H.
 59.08 " " " " " " h.c.H.

73.24
 59.08
 132.32 Acres by weight.

Warders Base Line (See Blue Print)
 of 50' Line

Base Line
 50' Line.



140.40 Total State To Walters
 132.32 Total to 49' Line.
 8.08

STONE N.W. CORNER
N.E. QUARTER, SEC. 23

1263.5'

1288.5'

ANDERSON
COPPERSMITH

S 88°-06' W

N.E. CORNER OF
SEC. 23

$$\frac{(510)(237.62)}{(2115)(249.9)} = \frac{121,186.2}{527,719.5}$$

$$= 0.2296$$

$$43500 \times 0.2296 = 9987.6$$

$$2.0002 \text{ ALI.}$$

$$43500 \times 0.2296 = 9987.6$$

$$9505 \times 0.2296 = 2181.2$$

$$2115 \times 0.2296 = 485.7$$

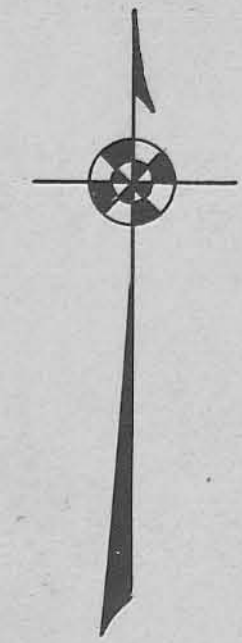
2.60 Acres

see Book 479
Page 42
Hwy 5 H. 232

175.10

THIS LINE IS A SHORT OF SCALE

THIS LINE IS A SHORT OF SCALE



SURVEY NOTES LOGAN COUNTY SURVEYOR'S BOOK 479
SCALE 1 INCH TO 40 FEET
SURVEYED MAY 1929
60.07 ACRES BETWEEN SECTION LINE AND BASE LINE
+ 1.82 " SOUTH OF BASE LINE & NORTH OF 50' LINE
67.89
- 4.04 " SOUTH OF 50' LINE & NORTH OF BASE LINE.
57.85 " SOUTH OF SECTION LINE & NORTH OF 50' LINE
15.39 " BETWEEN 19' & 50' LINE
73.24 " TOTAL TO 49' LINE.

J. F. Wright, C.E.

DEED VOL. 63 PAGE 4 ... DEED VOL. 133 PAGE 49 ...

see Wonders Survey
Map F-13 (Sanitary Sewer Files)
Page 16
Wonders Notes Book 456

COPPERSMITH SURVEY
STOKES TOWNSHIP LOGAN COUNTY
SECTION 23 TOWN 6 RANGE 8

1929

INDEXED ON MAP
100 -1P

I
N
D
I
A
N

L
A
K
E

