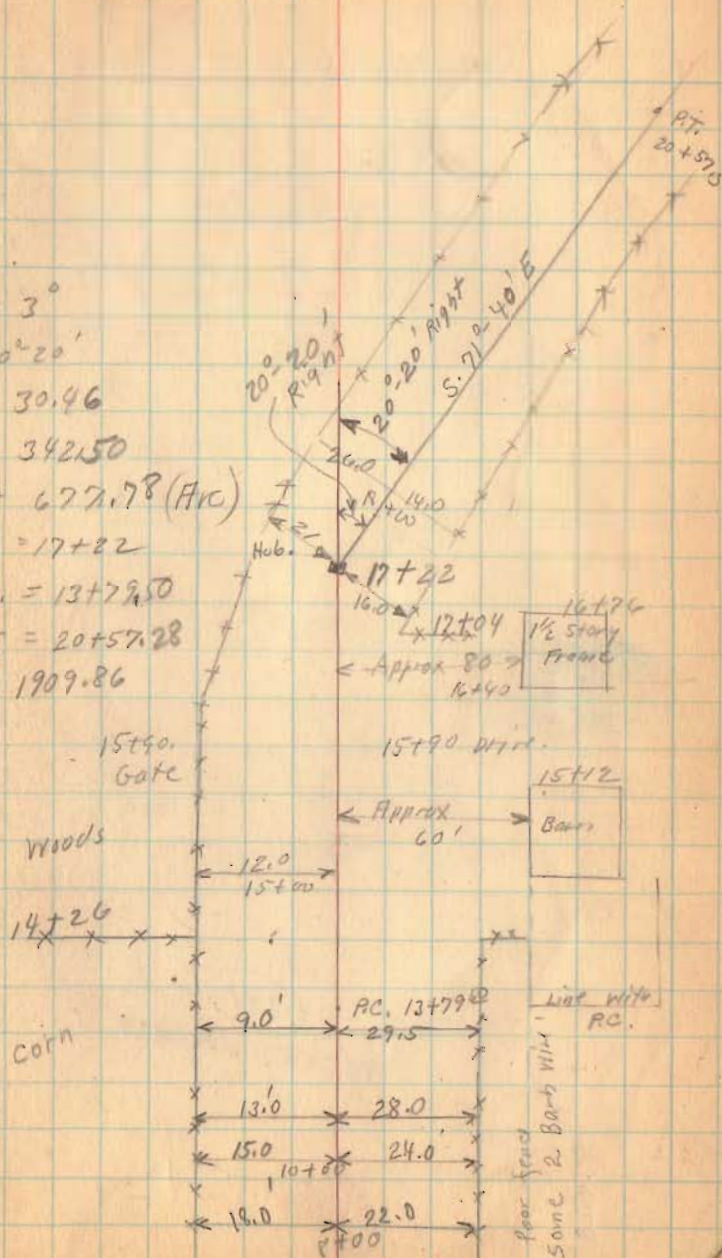


Road No. 88

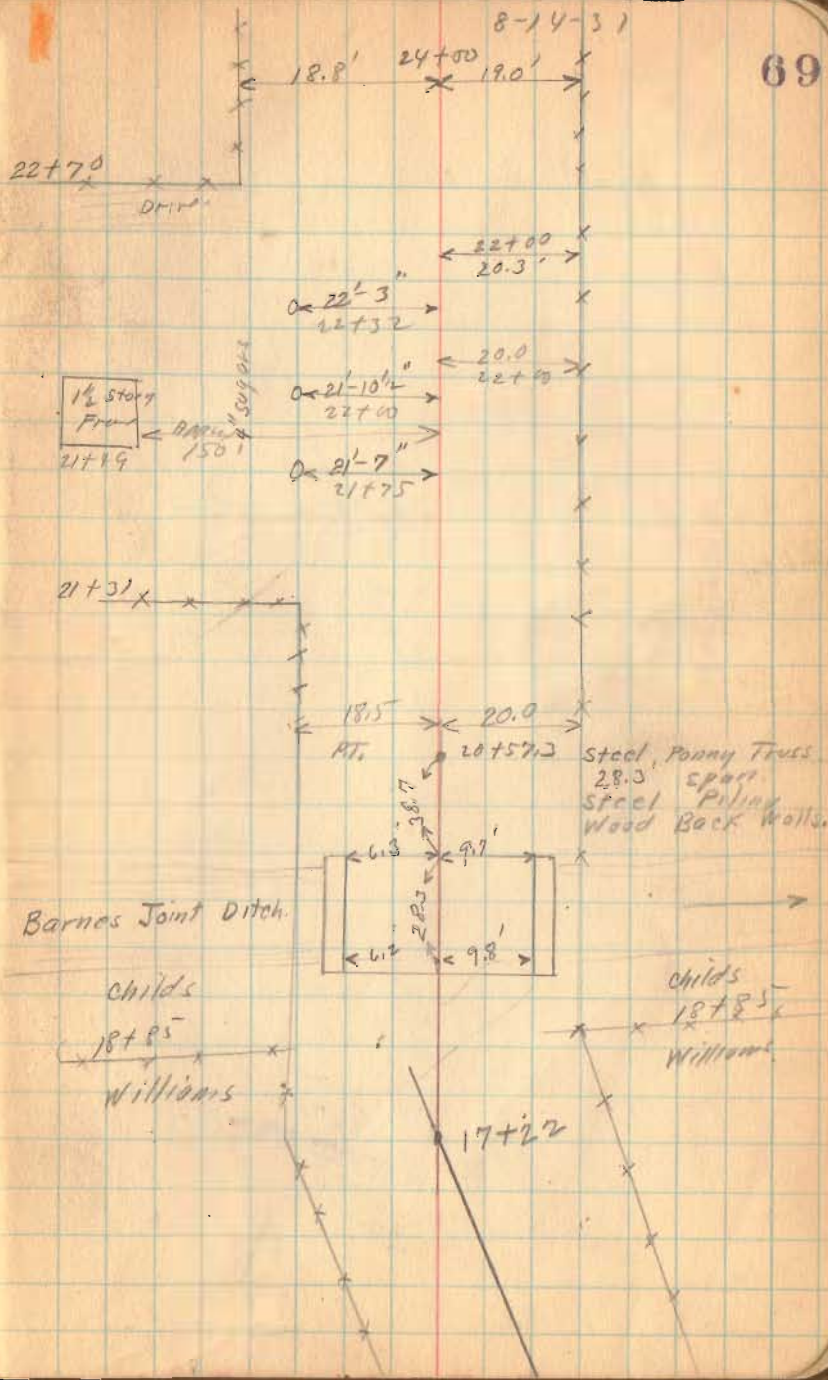
$D = 3^\circ$
 $\Delta 20^\circ 20'$
 $E = 30.46$
 $T = 342.50$
 $L = 677.78$ (Arc)
 $P.I. = 17+22$
 $P.C. = 13+79.50$
 $P.T. = 20+57.28$
 $R = 1909.86$



1297
 INDEXED ON MAP

Road No. 88

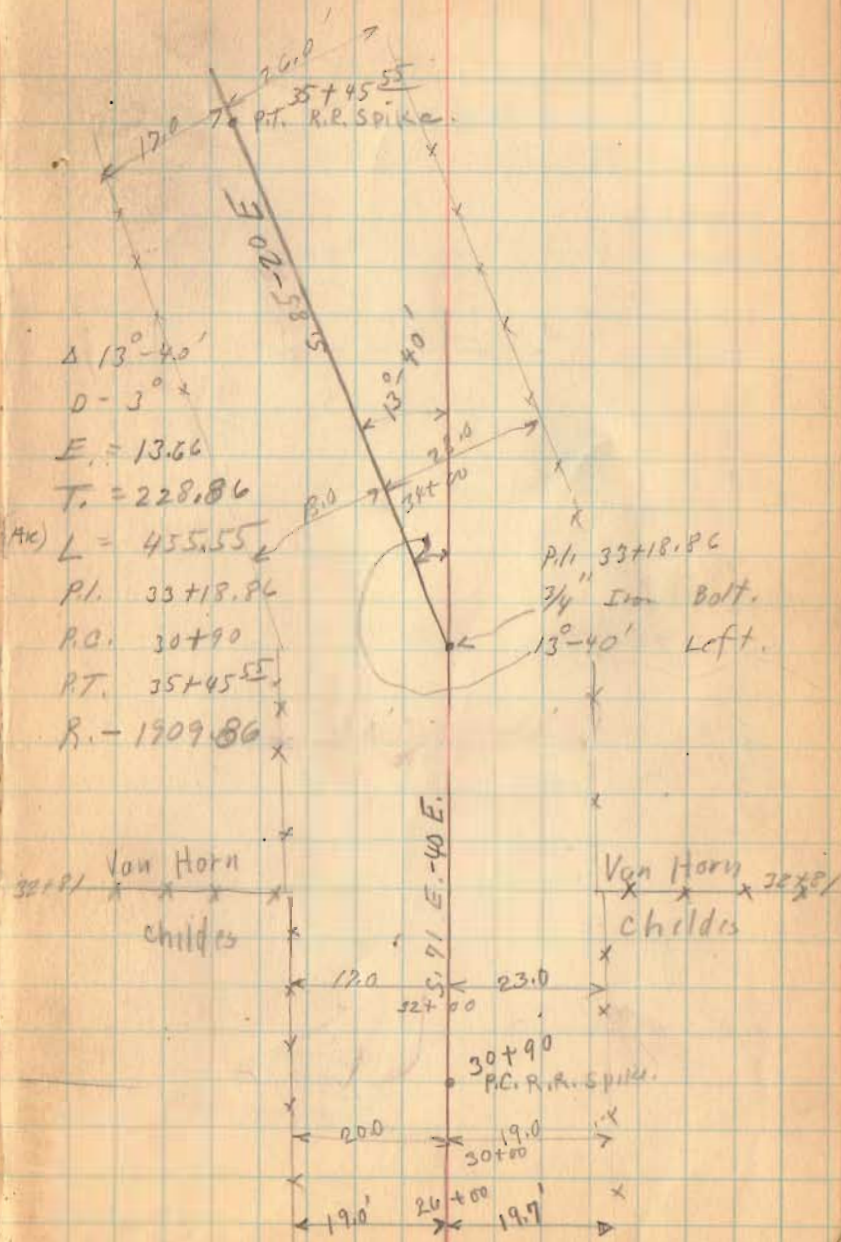
1297
INDEXED ON MAP



Road No. 88

K-41-2

70



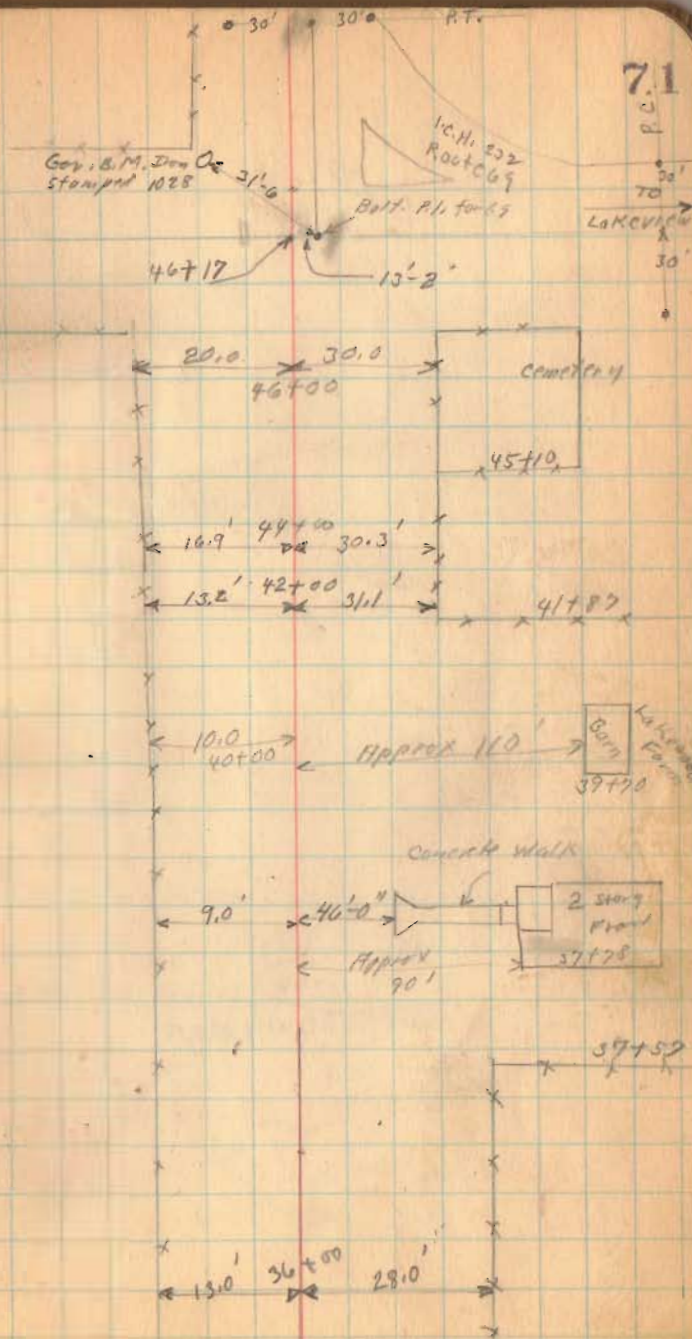
Δ 13°-40'
D - 3°
E = 13.66
T = 228.86
L = 455.55
P.I. 33+18.86
P.C. 30+90
P.T. 35+45.55
R. = 1909.86

1297
INDEXED ON MAP

Road No. 88



1297
INDEXED ON MAP



71