

REC'D 8-8-07 SMJ/AL

LOT 2246

LOT 2247

CHIPPEWA ALLOTMENT # 3
PLAT CABINET A, SLIDE 235

LOT 2248

N 81°45'40" E
74.48'

LOT 2249

TERRY BROWN AND KAREN S. BROWN
LOTS 2249, 2250 AND 2251
O.R. 332, PG. 756

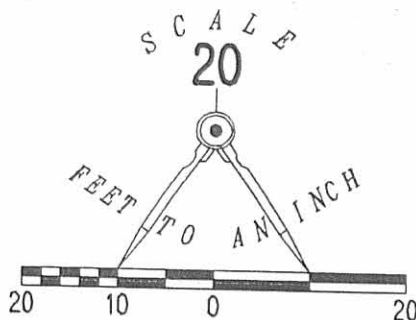
LOT 2250

LOT 2251

74.34'
S 81°46'31" W

LOT 2252

S 07°40'48" E
384.80'



LEGEND

● 5/8 INCH IRON ROD SET

⊙ 1 INCH IRON PIPE FOUND

LOT 2239

LOT 2238

LOT 2237

LOT 2236

LOT 2235

CHINOOK PATH (35 FEET WIDE)

BLUE JACKET PATH (35 FEET WIDE)

A RETRACEMENT SURVEY OF
LOTS 2249, 2250 AND 2251
CHIPPEWA PARK ALLOTMENT # 3
PLAT CABINET A, SLIDE 235
STOKES TOWNSHIP
LOGAN COUNTY, OHIO

SURVEYED BY:

William K. Bruce

WILLIAM K. BRUCE
PROFESSIONAL SURVEYOR 7437
AUGUST 2, 2007

COPYRIGHT 2007 BY:

LEE SURVEYING & MAPPING CO., INC.
117 North Madriver Street
BELLEFONTAINE, OHIO 43311

(937) 593-7335

surveys@lsminc.us

ADW

D0807

4484077

L-4484077-3

INDEXED ON MAP
1941 IP

2 WORKING DAYS

BEFORE YOU DIG

CALL TOLL FREE 800-362-2764

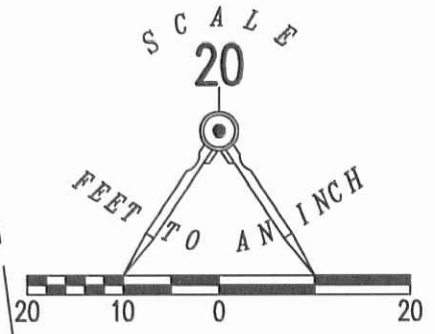
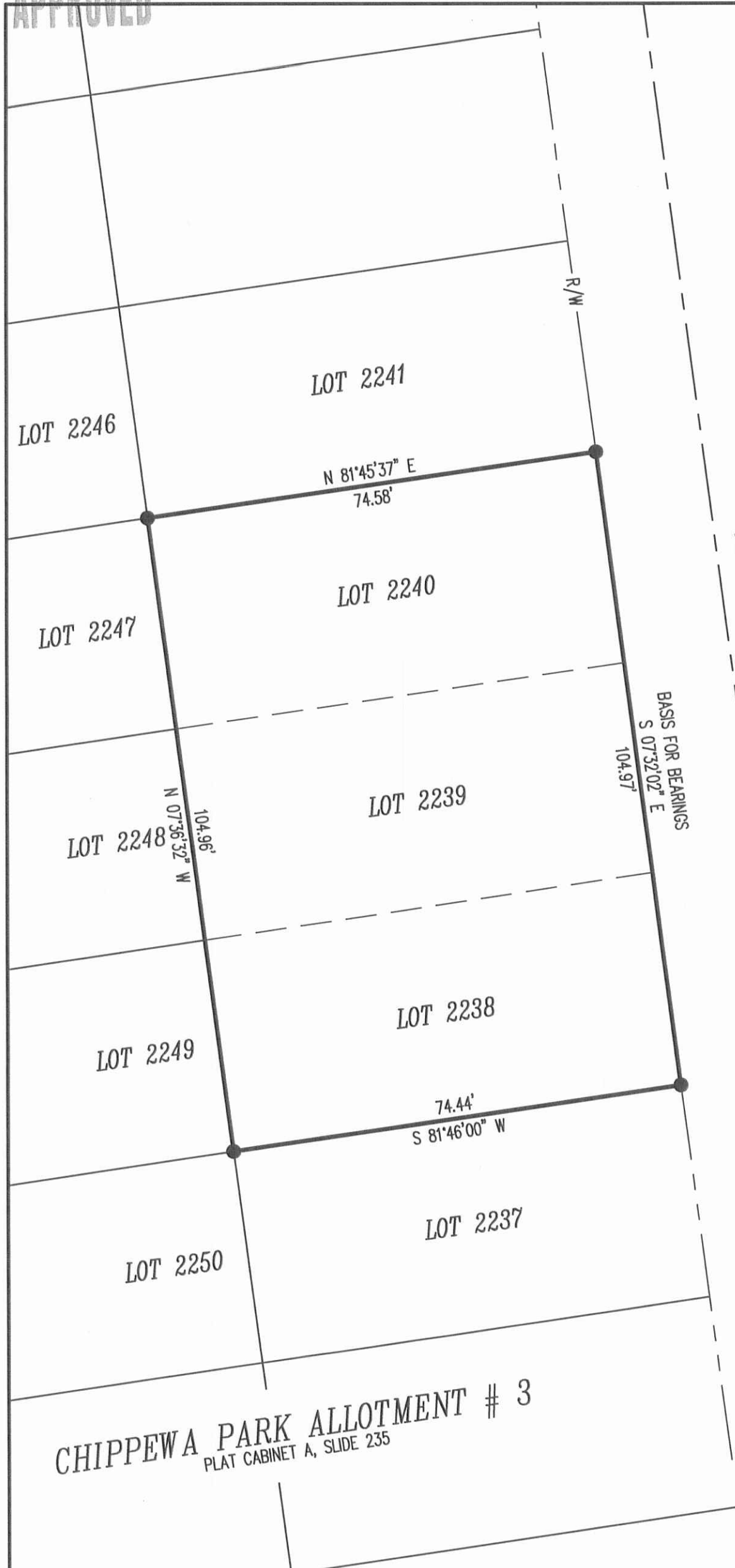
OHIO UTILITIES PROTECTION SERVICE



ORIGINAL STAMP IN GREEN

4-29-15

APPROVED



LEGEND

- 5/8 INCH IRON ROD SET WITH PLASTIC I.D. CAP STAMPED "LSM7437"

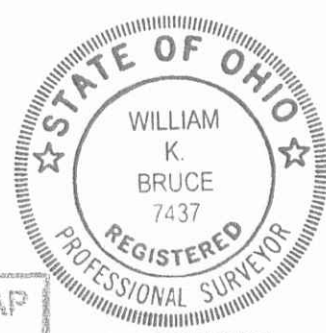
TUSCARORA PATH (35 FEET WIDE)

CHIPPEWA PARK ALLOTMENT # 3
PLAT CABINET A, SLIDE 235

RETRACEMENT SURVEY OF
LOTS 2238, 2239 AND 2240
CHIPPEWA PARK ALLOTMENT # 3
PLAT CABINET A, SLIDE 235
STOKES TOWNSHIP
LOGAN COUNTY, OHIO

SURVEYED BY:

William K. Bruce
WILLIAM K. BRUCE
PROFESSIONAL SURVEYOR 7437
APRIL 23, 2015



COPYRIGHT 2015 BY:
LEE SURVEYING & MAPPING CO., INC.
117 North Madriver Street
BELLEFONTAINE, OHIO 43311
(937) 593-7335
WWW.LSMINC.US
surveys@lsminc.us

2 WORKING DAYS
BEFORE YOU DIG
CALL TOLL FREE **800-362-2764**
OHIO UTILITIES PROTECTION SERVICE

INDEXED ON MAP
1941 2P

ADW D0415 58980415 L-5898-3