

M^CCLURE SURVEY
SEMINOLE ISLAND
V.M.S. 12276

LOTS 20 to 23 ARE IN SEMINOLE ISL.
SUB'D. A

ALL ACREAGE TRACTS PARALLEL TO
NORTH LINE LOT 23

REF: INSKEED. Bk. 13, Pg. 60

- A = 1/2" Pipe found
B = 1/2" ⌀ Bar found "OK"
C = 3/4" Pipe Set
D = " " "
E = 1" Pipe found, 0.5' E. of N.W. Cor. (see block shed)

ALL CORNERS FOUND OR SET ARE ON LINE "A-E"

"A" to "C" = 251.0' meas. - Deed = 251.0'

"C" to "B" = 91.0' " - " = 91.0'

"F" = 3/4" Pipe Set - 3.6' E. of wood ret. wall,
P-K nail set on wall

"G" = 3/4" pipe set - 4.8 E. of wood ret. wall (Boat
Dock) - pipe set at E. edge of Cove walk,
0.4' S. of N.E. Cor.

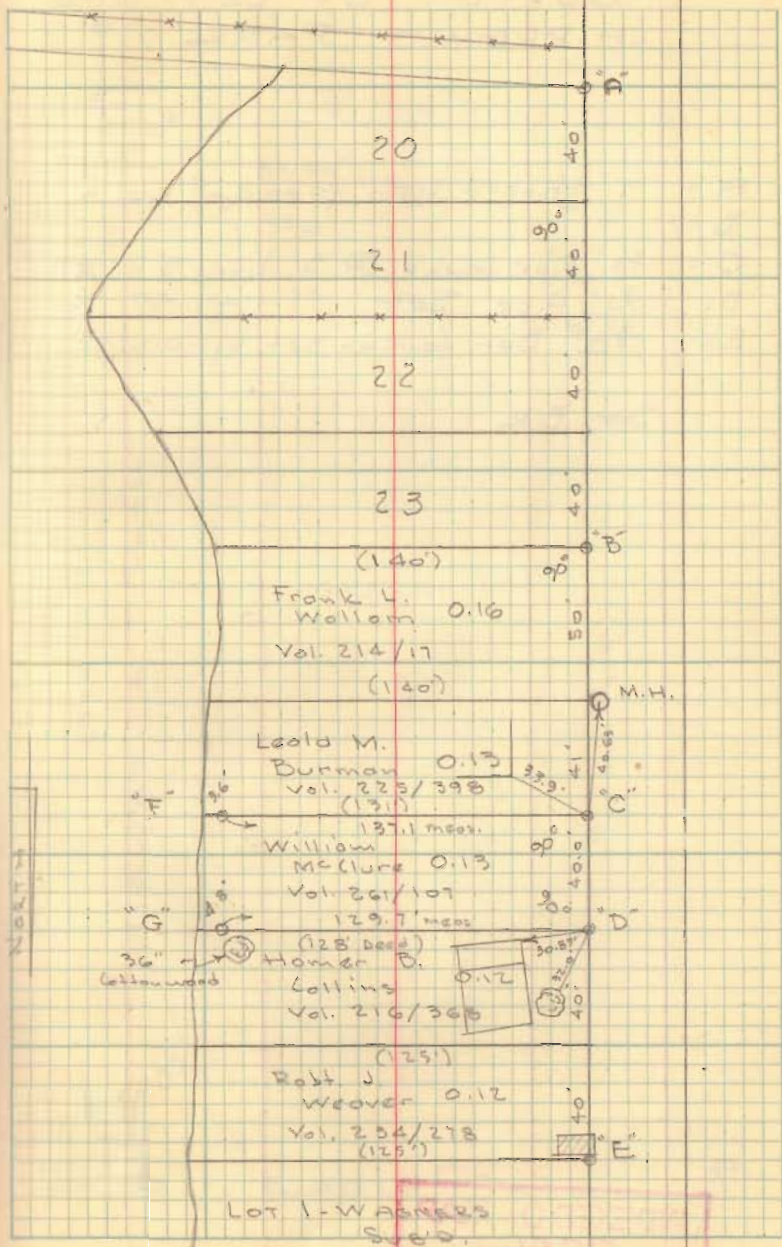
"G" AT APPROX. CENTER OF JOINT DOUBLE
BOAT DOCK

INDEXED ON MAP
2333

Dodson,
G. Geeslin

March 10, 1962
35°

25



LOT 1-WAGNERS
S. 60.

McCune Survey
Seminole Isl.

8:30 to 12:00

+ 1/2 hr.

4 hrs.

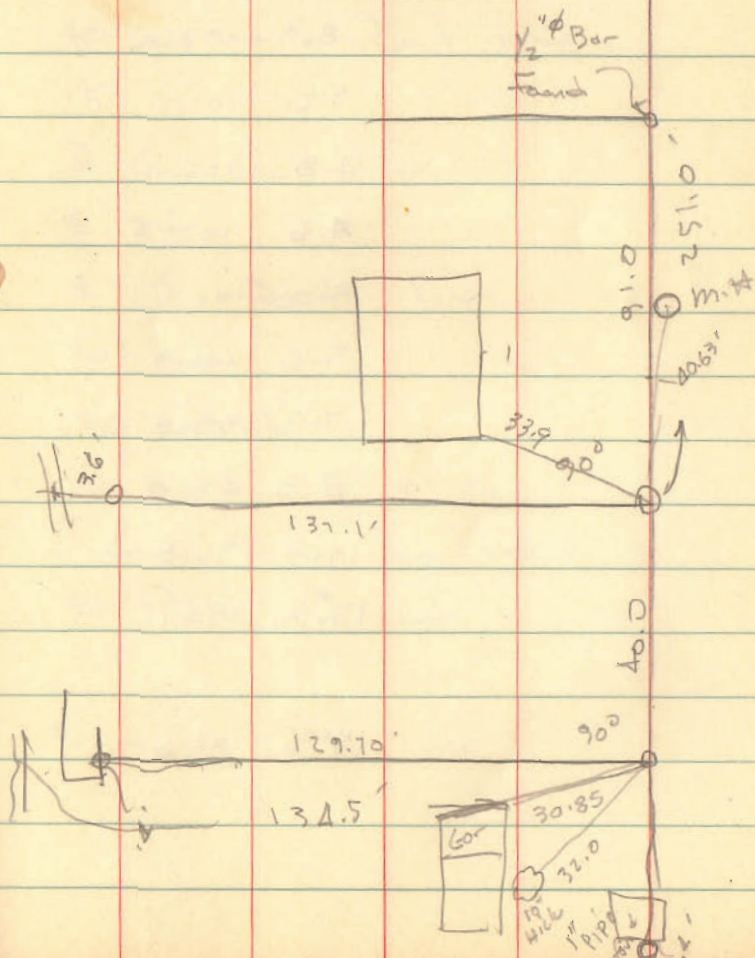
Blk 4/25

Dodson
Coastline

3/10/62
350

1/2 Pipe
found

19



INDEXED ON MAP
2333

Survey for Harold and Ruth
Williams
Seminole Island
Washington Twp., Logan Co. Ohio
Stokes Twp.

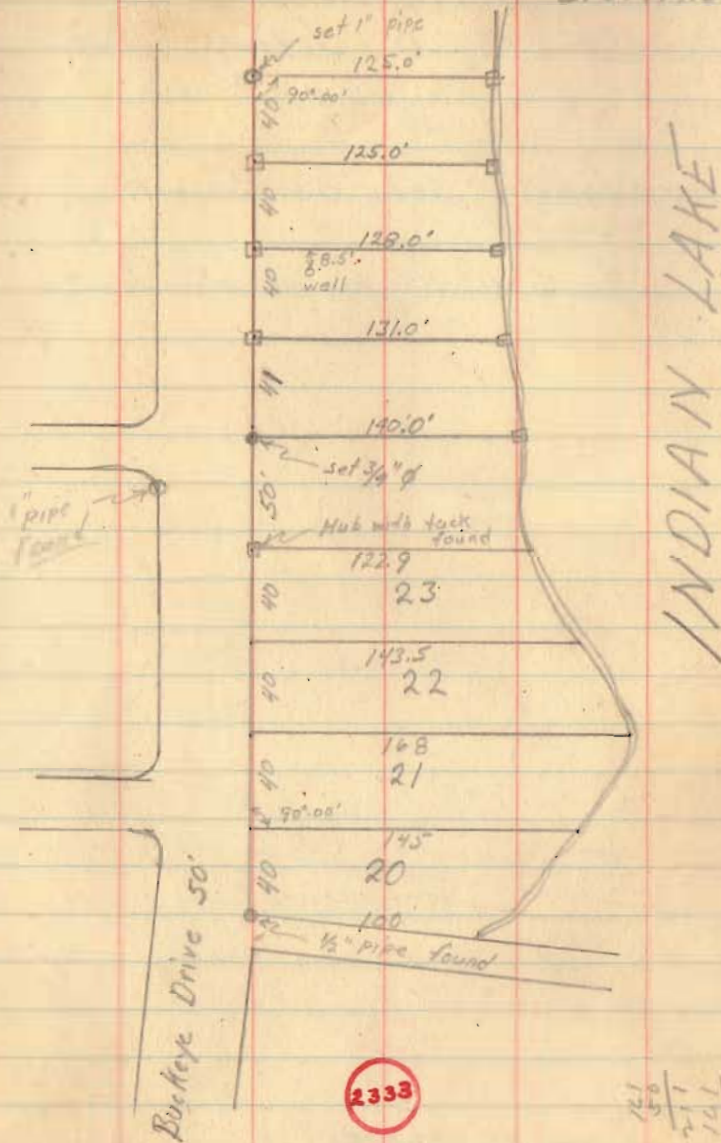
2"x2" hubs D set as shown

o 1" pipe

• 3/4" iron bar (d)

June 25, 1946

J.H. Inskoop
C.A. Miller
J.G. Wheeler



2333

121
50
211
141
572

INDEXED ON MAP