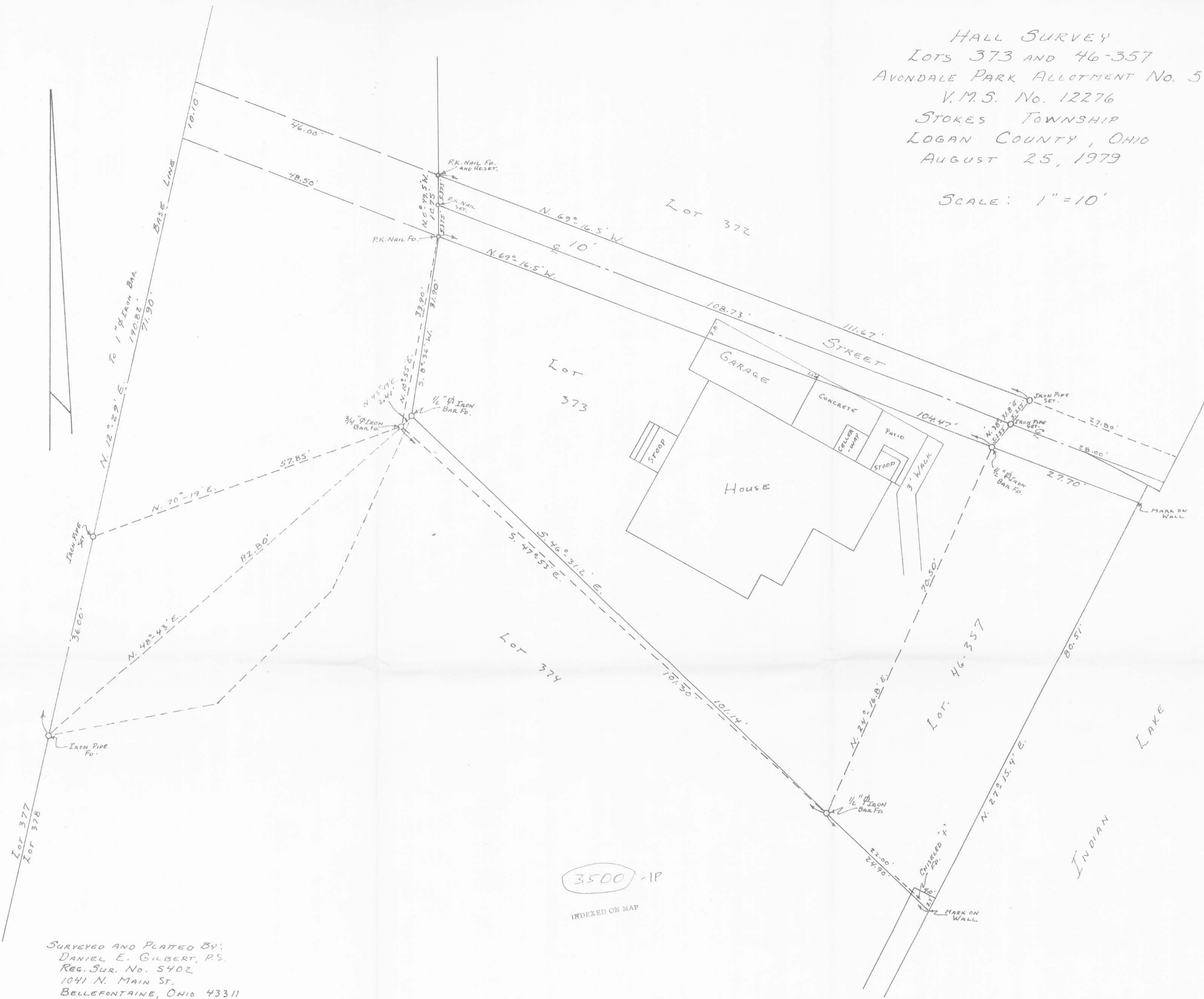


HALL SURVEY
 LOTS 373 AND 46-357
 AVONDALE PARK ALLOTMENT No. 5
 V.M.S. No. 12276
 STOKES TOWNSHIP
 LOGAN COUNTY, OHIO
 AUGUST 25, 1979

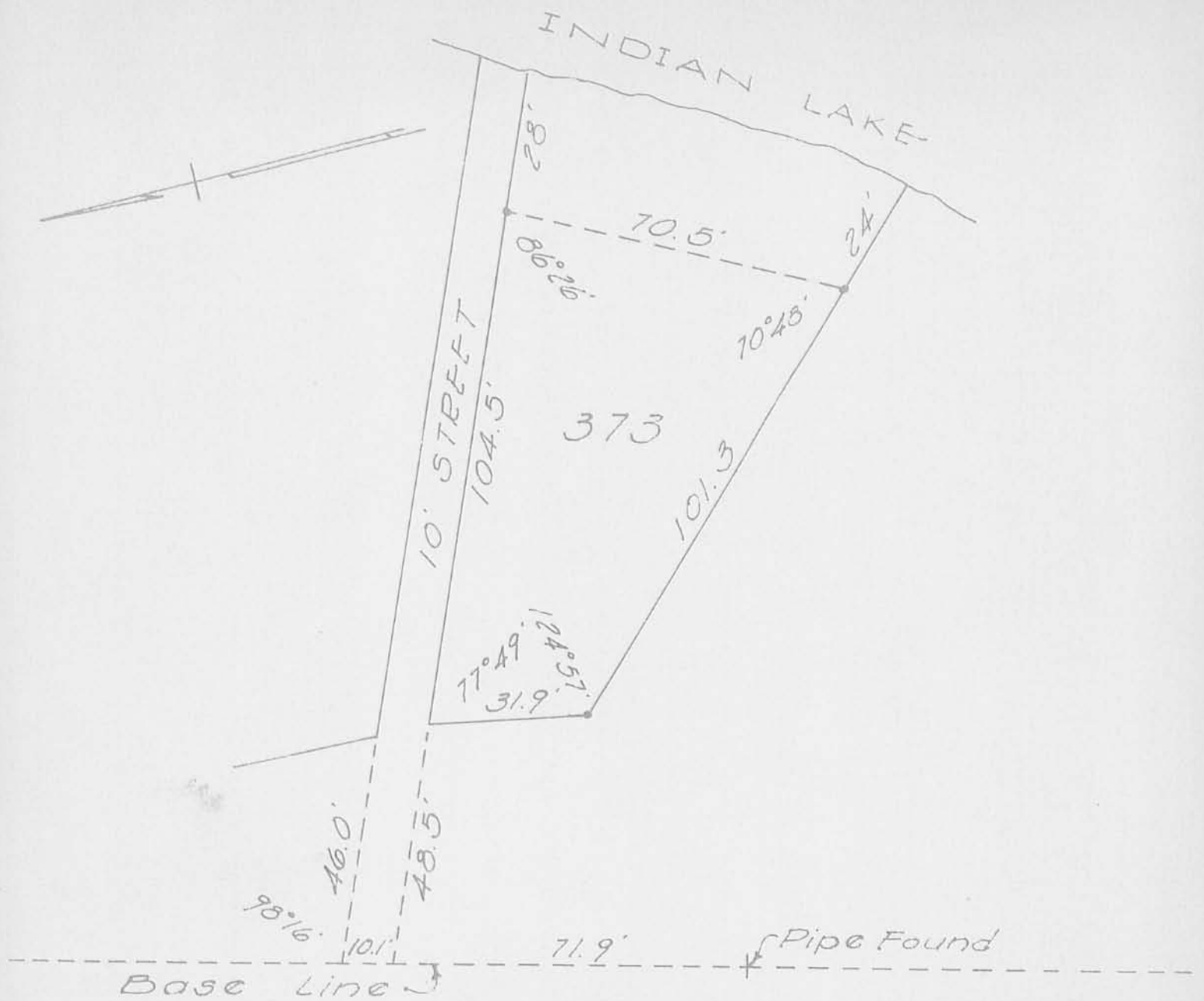
SCALE: 1" = 10'



SURVEYED AND PLATED BY:
 DANIEL E. GILBERT, P.S.
 REG. SUR. NO. 5402
 1041 N. MAIN ST.
 BELLEFONTAINE, OHIO 43311

3500 - 1P

INDEXED ON MAP



SURVEY OF LOT 373
 AVONDALE ALLOTMENT No. 5
 STOKES TOWNSHIP
 LOGAN COUNTY, OHIO
 OCTOBER 27, 1962
 SCALE 1" = 30'

3500
 2P

INDEXED ON MAP

REFERENCE:

County Eng. F.B. 700, Pg. 30
 Avondale No. 5 Plat J-51

• = Iron Bar Set

Dan L. Dodson

Dan L. Dodson
 Registered Surveyor 4270
 Bellefontaine, Ohio

*copy of book
 11/27/62
 D.L.D.*