

**CRANE-TOWN ISLAND
PROPERTY SURPLUS**

THIS PLAT REPRESENTS AREAS KNOWN AS STATE OR CRANE TOWN ISLAND, TURKEY FOOT ISLAND AND I.L. 35B.
CRANE ISLAND ALLOTMENT SURVEYED OCTOBER 1961 BY F.F. WRIGHT - SURVEYOR 1673, LOGAN COUNTY ENGINEERS FILE J-133.

ISLAND
AREA = 107,889.0 Sq. Ft.
OR 2.477 AC.

PART B
AREA = 101,728.07 Sq. Ft.
OR 2.335 AC.

PART C
AREA = 12,176.27 Sq. Ft.
OR 0.28 AC.
146,000'

PART A
AREA = 105,643.64 Sq. Ft.
OR 2.425 AC.

PART F
AREA = 130,243.66 Sq. Ft.
OR 4.3675 AC.

PART E
AREA = 48,064.83 Sq. Ft.
OR 1.1034 AC.

PART D
AREA = 52,546.33 Sq. Ft.
OR 1.2063 AC.

PART G
AREA = 153,054.60 Sq. Ft.
OR 3.6314 AC.

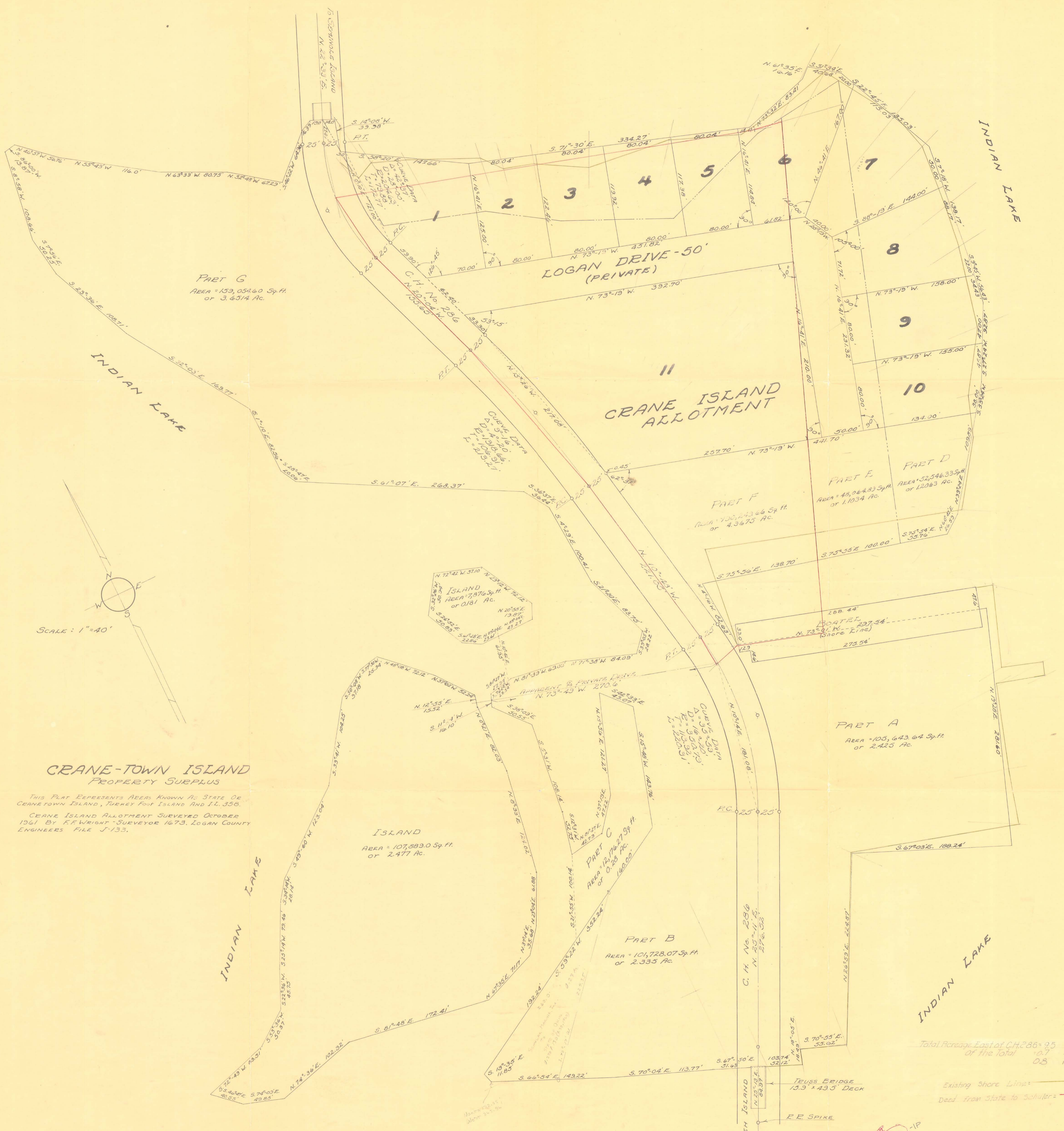
ISLAND
AREA = 7376 Sq. Ft.
OR 0.181 AC.

CRANE ISLAND
AREA = 17,191.81 Sq. Ft.
OR 0.3921 AC.

NOTE:
E.E. SPIKE FOUND ON P.T. OF HIGHWAY CURVE, SEE MIDLAKE SUB-DIVISION #1, LOGAN COUNTY PLAT BOOK VOL. 4-D PAGE 7, FOR FURTHER DATA.

TOTAL ACCEASE EAST OF C.H. 286 - 3.50 AC
OF THE TOTAL 10.70 IS IN EARDS
0.80 IS IN CHANNEL
EXISTING SHORE LINE IN GREEN
DEED FROM STATE TO SCHULER IN RED

STATE OF OHIO
DEPARTMENT OF NATURAL RESOURCES
DIVISION OF PARKS
FILE NO. 46-I-RS-12-1-2
W. H. LEWIS - SURVEYOR - No. 4465



**CRANE-TOWN ISLAND
PROPERTY SURPLUS**

THIS PLAT REPRESENTS AREAS KNOWN AS STATE OR CRANE TOWN ISLAND, TURKEY FOOT ISLAND AND I.L. 358.
CRANE ISLAND ALLOTMENT SURVEYED OCTOBER 1961 BY F.F. WRIGHT - SURVEYOR 1673, LOGAN COUNTY ENGINEERS FILE J-133.

ISLAND
AREA = 107,889.0 Sq. Ft.
OR 2.477 AC.

PART C
AREA = 12,176.27 Sq. Ft.
OR 0.28 AC.

PART B
AREA = 101,728.07 Sq. Ft.
OR 2.335 AC.

PART A
AREA = 103,643.64 Sq. Ft.
OR 2.425 AC.

PART F
AREA = 105,213.66 Sq. Ft.
OR 4.3673 AC.

PART E
AREA = 49,064.83 Sq. Ft.
OR 1.1034 AC.

PART D
AREA = 52,546.33 Sq. Ft.
OR 1.2063 AC.

PART G
AREA = 159,054.60 Sq. Ft.
OR 3.6314 AC.

ISLAND
AREA = 7,876 Sq. Ft.
OR 0.181 AC.

**CRANE ISLAND
ALLOTMENT**

LOGAN DRIVE - 50'
(PRIVATE)

SCALE: 1" = 40'

NOTE:
E.E. SPIKE FOUND ON P.T. OF
HIGHWAY CUEVE, SEE MIDDLE SUB-
DIVISION #1, LOGAN COUNTY PLAT
BOOK VOL. 4-D PAGE 7, FOR FURTHER
DATA.

3573 - IP
INDEXED BY MAP

Existing Shore Line
Dead from State to Schiller