

LOT 111  
 SHAWNEE ISLAND  
 STOKES TOWNSHIP  
 LOGAN COUNTY, OHIO  
 MAY 22, 1965  
 SCALE 1" = 30'  
 o = Pipe Found

INDEXED ON MAP  
 3783

REFERENCE:  
 SHAWNEE ISLAND  
 PLAT BK. C, PG. 12

*Dan L. Dodson*  
 Dan L. Dodson  
 Reg. Surveyor 4270  
 Bellefontaine, Ohio

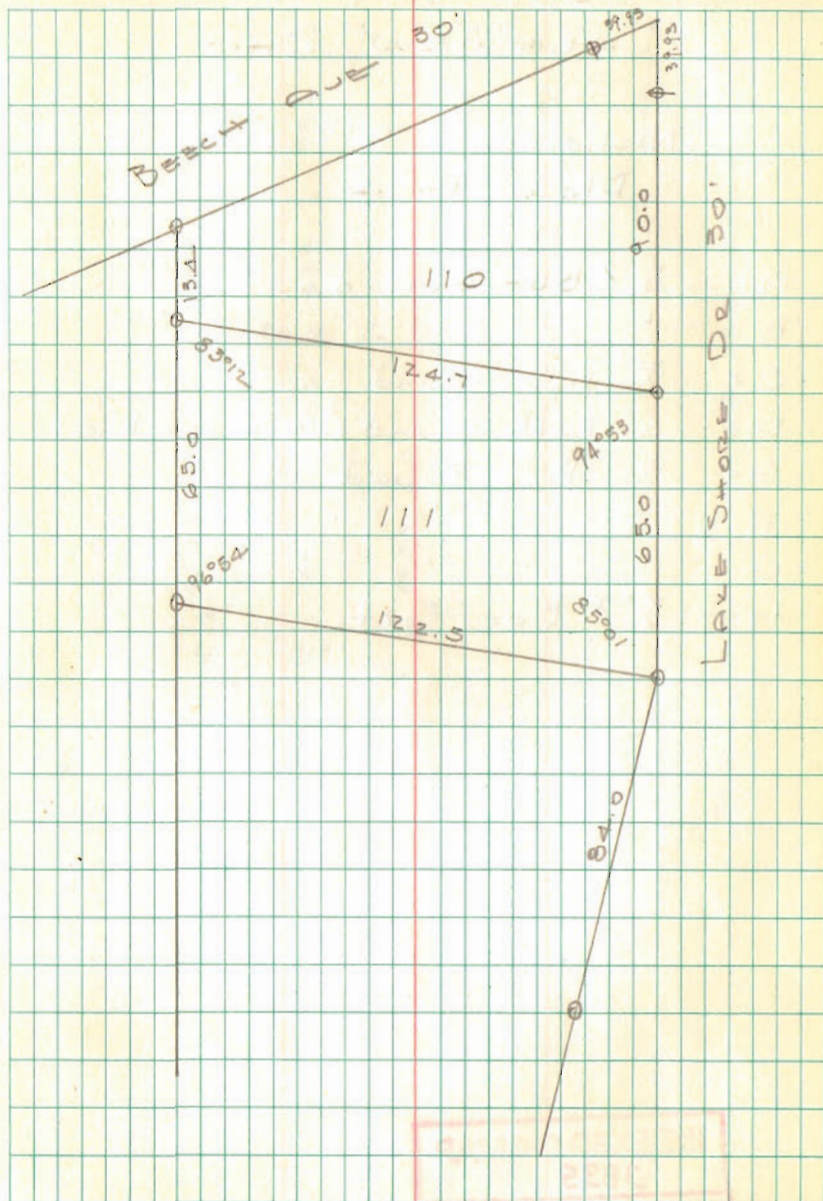
LOT 111  
SHAWNEE ISL.

o = Pipe Found

See Resurvey by Wm. Lewis  
Index # 2592

Dodson  
Geolin

May 22, 1965 4



INDEXED ON MAP  
3783