

GOVERNOR'S DEED

STATE OF OHIO

KNOW ALL MEN BY THESE PRESENTS, THAT

WHEREAS: Pursuant to the provisions of Section 1541.081 of the Revised Code of Ohio, and evidence being of record in the office of the Auditor of State that all requirements set forth in the said Section 1541.081 have been duly complied with, the Chief of the Division of Parks as agent of the State, has sold a certain parcel of land in the environs of Indian Lake

_____ , and

WHEREAS: This deed is prepared for execution and delivery in accordance with and subject to the provisions of Section 115.20, Section 5301.13 and Section 1541.081 of the Revised Code of Ohio.

NOW, THEREFORE, The State of Ohio, by JAMES A. RHODES, Governor, in consideration of the payment of Nineteen Thousand Five Hundred Thirty Two and 70/100 dollars (\$ 19,532.70), the receipt of which is hereby acknowledged, does hereby remise, release and forever quit-claim unto U. C. Felty, Phillip F. Boyd, G. Parker Kennedy, Kenneth E. Miller and E. P. Webb, their heirs or assigns forever, the following described property, situated in the State of Ohio, County of

That part of South Walnut Island in Indian Lake and in U.M.S. 13393, Stokes Township, Logan County, Ohio that is described as follows:

Starting at a iron pin which is N. 72° 52' W, 2044.0 feet from a point in the center of the North abutment of the bridge at the end of S.R. 273 on Long Island; thence S. 76° 22' E, 13.5 feet to the true place of beginning; thence S. 57° 42' W, 78.69 feet to a point; thence S. 78° 58' W, 100.34 feet to a point; thence S. 89° 24' W, 122.04 feet to a point; thence N. 81° 33' W, 45.80 feet to a point; thence N. 58° 29' W, 78.56 feet to a point; thence N. 29° 38' W, 100.21 feet to a point; thence N. 60° 41' E, 19.97 feet to a point; thence N. 17° 27' E, 172.30 feet to a point; thence N. 3° 35' W, 70.44 feet to a point; thence S. 76° 57' E, 182.87 feet to a point; thence N. 74° 21' E, 60.13 feet to a point; thence N. 65° 37' E, 44.73 feet to a point; thence S. 89° 47' E, 75.50 feet to a point; thence S. 50° 37' E, 34.31 feet to a point; thence S. 11° 32' W, 69.63 feet to a point; thence S. 8° 32' W, 39.05 feet to a point; thence S. 14° 40' E, 46.69 feet to a point; thence S. 3° 29' W, 48.51 feet to a point; thence S. 10° 28' E, 89.23 feet to the place of beginning containing 3.136 acres of land more or less.

Last Instrument relied upon for Title, Acquisition by State of Ohio.

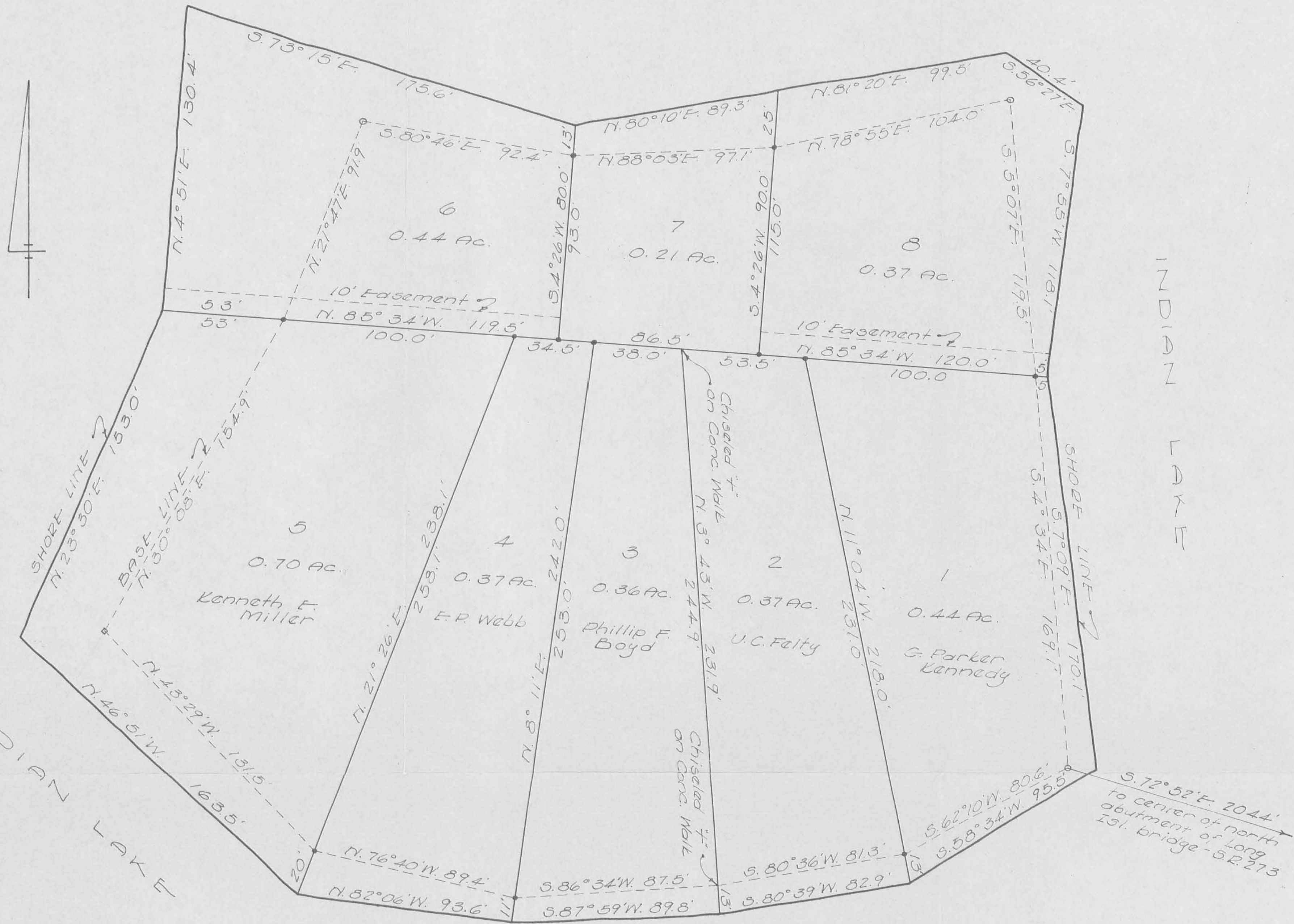
INDEXED ON MAP
3969



SCALE 1" = 50'

INDEXED ON MAP
3969

1P



SURVEY OF
 SOUTH WALNUT ISLAND
 V.M.S. 13393 STOKES TWP.
 LOGAN COUNTY, OHIO
 JULY, 1966
 SCALE 1"=30'

INDEXED ON MAP

3969
 2P

- = 1/2" Pipe Found
- = 3/4" Bar Set
- = Hub Set

Dan L. Dodson
 Dan L. Dodson
 Reg. Surveyor 4270
 Bellefontaine, Ohio

REC'D 11-19-01 SML

Lee Surveying and Mapping Co., Inc.

Land Surveys • Topography • Subdivisions • Construction Layout

117 N. Madriver St.
Bellefontaine OH 43311



Phone: (937) 593-7335
Fax: (937) 593-7444

MURRAY 0.445 ACRE TRACT A

Lying in Virginia Military Survey 13393, South Walnut Island, Stokes Township, Logan County, Ohio.

Being out of the Dixie Lee Murray and Jack A. Murray, Trustees original 0.44 acre tract and 0.21 acre tract as deeded and described in Official Record 403, Page 991, Parcel I and Parcel II of the Logan County Records of Deeds and being more particularly described as follows:

Beginning at a 3/4 inch iron rod found on the northwest corner of the Dixie Lee Murray, Trustee, 0.37 acre tract (O.R. 429, Pg. 445) and the northeast corner of the Dixie Lee Murray, Trustee 0.70 acre tract (O.R. 403, Pg. 991).

THENCE, with the north line of the said 0.70 acre tract, N 85°-34'-00" W, a distance of 153.05 feet to a point, passing a 3/4 inch iron rod found at 100.05 feet.

THENCE, N 4°-51'-00" E, a distance of 130.46 feet to a point, referenced by a 5/8 inch iron rod set, S 57°-18'-02" E, a distance of 90.22 feet.

THENCE, S 73°-15'-00" E, a distance of 175.59 feet to a point, referenced by a 5/8 inch iron rod set on the east line of the said 0.44 acre tract, S 4°-26'-00" W, a distance of 23.00 feet.

THENCE, N 80°-09'-44" E, a distance of 13.81 feet to a point.

THENCE, S 3°-40'-40" W, a distance of 26.33 feet to a 5/8 inch iron rod set, passing a MAG nail set in a 4 inch concrete seawall at 19.19 feet.

THENCE, S 29°-45'-58" W, a distance of 77.53 feet to the point of beginning.

Containing 0.445 acre.

The basis for bearings is the north line of the said 0.70 acre tract, being N 85°-34'-00" W, and all other bearings are from angles and distances measured in a field survey by Lee Surveying and Mapping Co., Inc. on October 31, 2001.



ORIGINAL STAMP IN GREEN

Description prepared by:

Jeffrey I. Lee
Professional Surveyor 6359
November 7, 2001
Revised November 19, 2001



L-3263
-3D-1

REC'D 11-19-01 SML ak

Lee Surveying and Mapping Co., Inc.

Land Surveys • Topography • Subdivisions • Construction Layout

117 N. Madriver St.
Bellefontaine OH 43311



Phone: (937) 593-7335
Fax: (937) 593-7444

MURRAY 0.045 ACRE TRACT B

Lying in Virginia Military Survey 13393, South Walnut Island, Stokes Township, Logan County, Ohio.

Being out of the Dixie Lee Murray and Jack A. Murray, Trustees original 0.44 acre tract and 0.21 acre tract as deeded and described in Official Record 403, Page 991, Parcel I and Parcel II of the Logan County Records of Deeds and being more particularly described as follows:

Beginning at a 3/4 inch iron rod found on the northwest corner of the Dixie Lee Murray, Trustee, 0.37 acre tract (O.R. 429, Pg. 445) and the northeast corner of the Dixie Lee Murray, Trustee 0.70 acre tract (O.R. 403, Pg. 991).

THENCE, N 29°-45'-58" E, a distance of 77.53 feet to a 5/8 inch iron rod set.

THENCE, N 3°-40'-40" E, a distance of 26.33 feet to a point in the waters of Indian Lake, passing a MAG nail set in a 4 inch wide concrete seawall at 7.14 feet.

THENCE, N 80°-09'-44" E, a distance of 11.79 feet to a point in the waters of Indian Lake.

THENCE, S 2°-36'-06" W, a distance of 28.88 feet to a 5/8 inch iron rod set, passing a MAG nail set in a 4 inch wide concrete seawall at 21.69 feet.

THENCE, S 13°-03'-27" W, a distance of 71.25 feet to a 3/4 inch iron rod found on the northeast corner of the said 0.37 acre tract.

THENCE, with the north line of the said 0.37 acre tract, N 85°-34'-00" W, a distance of 34.49 feet to the point of beginning.

Containing 0.045 acre.

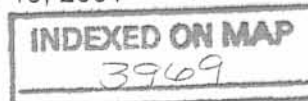
The basis for bearings is the north line of the said 0.37 acre tract, being N 85°-34'-00" W, and all other bearings are from angles and distances measured in a field survey by Lee Surveying and Mapping Co., Inc. on October 31, 2001.



ORIGINAL STAMP IN GREEN

Description prepared by:

Jeffrey I. Lee
Jeffrey I. Lee
Professional Surveyor 6359
November 7, 2001
Revised November 19, 2001



3D-2

L-3263

REC'D 11-16-01 SWM CLK

Lee Surveying and Mapping Co., Inc.

Land Surveys • Topography • Subdivisions • Construction Layout

117 N. Madriver St.
Bellefontaine OH 43311



Phone: (937) 593-7335
Fax: (937) 593-7444

MURRAY 0.063 ACRE TRACT C

Lying in Virginia Military Survey 13393, South Walnut Island, Stokes Township, Logan County, Ohio.

Being out of the Dixie Lee Murray and Jack A. Murray, Trustees original 0.21 acre tract as deeded and described in Official Record 403, Page 991, Parcel II of the Logan County Records of Deeds and being more particularly described as follows:

Beginning at a 3/4 inch iron rod found on the northeast corner of the Dixie Lee Murray, Trustee, 0.37 acre tract (O.R. 429, Pg. 445) and the northwest corner of the Carole J. Boyd 0.36 acre tract (O.R. 272, Pg. 995).

THENCE, N 13°-03'-27" E, a distance of 71.25 feet to a 5/8 inch iron rod set.

THENCE, N 2°-36'-06" E, a distance of 28.88 feet to a point in the waters of Indian Lake, passing a MAG nail set in a 4 inch wide concrete seawall at 7.19 feet.

THENCE, N 80°-09'-44" E, a distance of 22.25 feet to a point in the waters of Indian Lake.

THENCE, S 4°-04'-32" W, a distance of 33.73 feet to a 5/8 inch iron rod set, passing a MAG nail set in a 4 inch wide concrete seawall at 26.45 feet.

THENCE, S 0°-44'-23" E, a distance of 71.36 feet to a chiseled "X" found in concrete at the northeast corner of the said 0.36 acre tract.

THENCE, with the north line of the said 0.36 acre tract, N 85°-34'-00" W, a distance of 37.97 feet to the point of beginning.

Containing 0.063 acre.

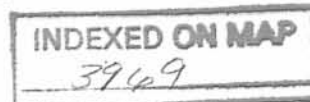
The basis for bearings is the north line of the said 0.37 acre tract, being N 85°-34'-00" W, and all other bearings are from angles and distances measured in a field survey by Lee Surveying and Mapping Co., Inc. on October 31, 2001.



ORIGINAL STAMP IN GREEN

Description prepared by:

Jeffrey I. Lee
Professional Surveyor 6359
November 7, 2001



L-3263

3D-3

LEE IS 11-10-01 8M 2K

Lee Surveying and Mapping Co., Inc.

Land Surveys • Topography • Subdivisions • Construction Layout

117 N. Madriver St.
Bellefontaine OH 43311



Phone: (937) 593-7335
Fax: (937) 593-7444

MURRAY 0.129 ACRE TRACT D

Lying in Virginia Military Survey 13393, South Walnut Island, Stokes Township, Logan County, Ohio.

Being out of the Dixie Lee Murray and Jack A. Murray, Trustees original 0.21 acre tract and 0.37 acre tract as deeded and described in Official Record 403, Page 991, Parcel II and Parcel III of the Logan County Records of Deeds and being more particularly described as follows:

Beginning at a chiseled "X" found in concrete on the northwest corner of the Elizabeth H. Kennedy, 0.37 acre tract (Vol. 327, Pg. 475) and the northeast corner of the Carole J. Boyd 0.36 acre tract (O.R. 272, Pg. 995).

THENCE, N 0°-44'-23" W, a distance of 71.36 feet to a 5/8 inch iron rod set.

THENCE, N 4°-04'-32" E, a distance of 33.73 feet to a point in the waters of Indian Lake, passing a MAG nail set in a 4 inch wide concrete seawall at 7.28 feet.

THENCE, N 80°-09'-44" E, a distance of 41.39 feet to a point, referenced by a 3/4 inch iron rod found on the east line of the said 0.21 acre tract, S 4°-26'-00" W, a distance of 25.00 feet.

THENCE, N 81°-20'-00" E, a distance of 4.95 feet to a point.

THENCE, S 3°-02'-00" E, a distance of 117.12 feet to a 3/4 inch iron rod found on the northeast corner of the said 0.37 acre tract, passing a 5/8 inch iron rod set at 10.18 feet.

THENCE, with the north line of the said 0.37 acre tract, N 85°-34'-00" W, a distance of 53.51 feet to the point of beginning.

Containing 0.129 acre.

The basis for bearings is the north line of the said 0.36 acre tract, being N 85°-34'-00" W, and all other bearings are from angles and distances measured in a field survey by Lee Surveying and Mapping Co., Inc. on October 31, 2001.



ORIGINAL STAMP IN GREEN

Description prepared by:

Jeffrey I. Lee
Professional Surveyor 6359
November 7, 2001

INDEXED ON MAP

3969

L-3263

3D-4

DEED 11-10-01 ONV 006

Lee Surveying and Mapping Co., Inc.

Land Surveys • Topography • Subdivisions • Construction Layout

117 N. Madriver St.
Bellefontaine OH 43311



Phone: (937) 593-7335
Fax: (937) 593-7444

MURRAY 0.342 ACRE TRACT E

Lying in Virginia Military Survey 13393, South Walnut Island, Stokes Township, Logan County, Ohio.

Being out of the Dixie Lee Murray and Jack A. Murray, Trustees original 0.37 acre tract as deeded and described in Official Record 403, Page 991, Parcel III of the Logan County Records of Deeds and being more particularly described as follows:

Beginning at a 3/4 inch iron rod found on the northeast corner of the Elizabeth H. Kennedy, 0.37 acre tract (Vol. 327, Pg. 475) and the northwest corner of the Thomas R. Holtsberry 0.44 acre tract (O.R. 239, Pg. 514).

THENCE, N 3°-02'-00" W, a distance of 117.12 feet to a point, passing a 5/8 inch iron rod set at 106.94 feet.

THENCE, N 81°-20'-00" E, a distance of 94.55 feet to a point.

THENCE, S 56°-27'-00" E, a distance of 40.40 feet to a point, reference by a 5/8 inch iron rod set N 85°-41'-32" W, a distance of 32.00 feet.

THENCE, S 7°-55'-00" W, a distance of 118.11 feet to a point.

THENCE, with the north line of the said 0.44 acre tract, N 85°-34'-00" W, a distance of 104.99 feet to the point of beginning, passing a 5/8 inch iron rod set at 25.00 feet.

Containing 0.342 acre.

The basis for bearings is the north line of the said 0.44 acre tract, being N 85°-34'-00" W, and all other bearings are from angles and distances measured in a field survey by Lee Surveying and Mapping Co., Inc. on October 31, 2001.

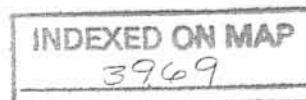
Description prepared by:



ORIGINAL STAMP IN GREEN

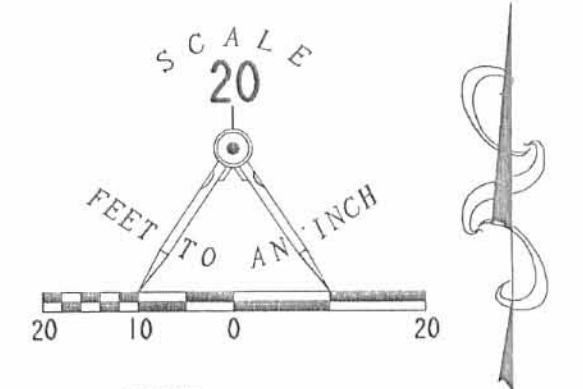
Jeffrey I. Lee
Professional Surveyor 6359
November 7, 2001

L-3263



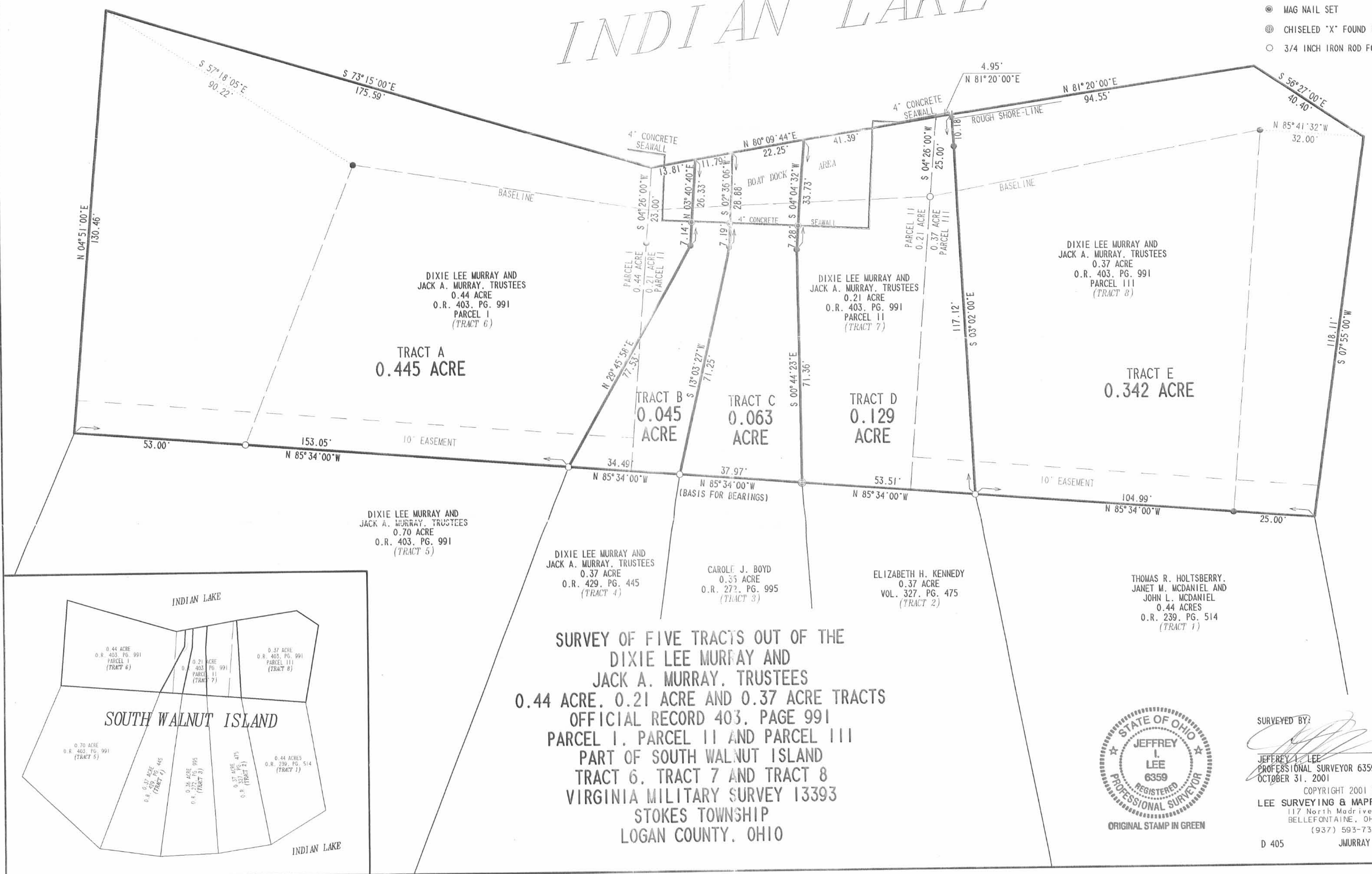
2 WORKING DAYS
BEFORE YOU DIG
CALL TOLL FREE **800-362-2764**
OHIO UTILITIES PROTECTION SERVICE.

NOTE:
THE "(TRACT #)" ACCOMPANYING EACH TRACT OWNER INFORMATION IS THE DESIGNATION OF EACH TRACT IN A SURVEY OF SOUTH WALNUT ISLAND BY DAN L. DODSON, REG. SURVEYOR NO. 4270 IN JULY, 1966. LOGAN COUNTY ENGINEER'S FILE NO. R-3969.

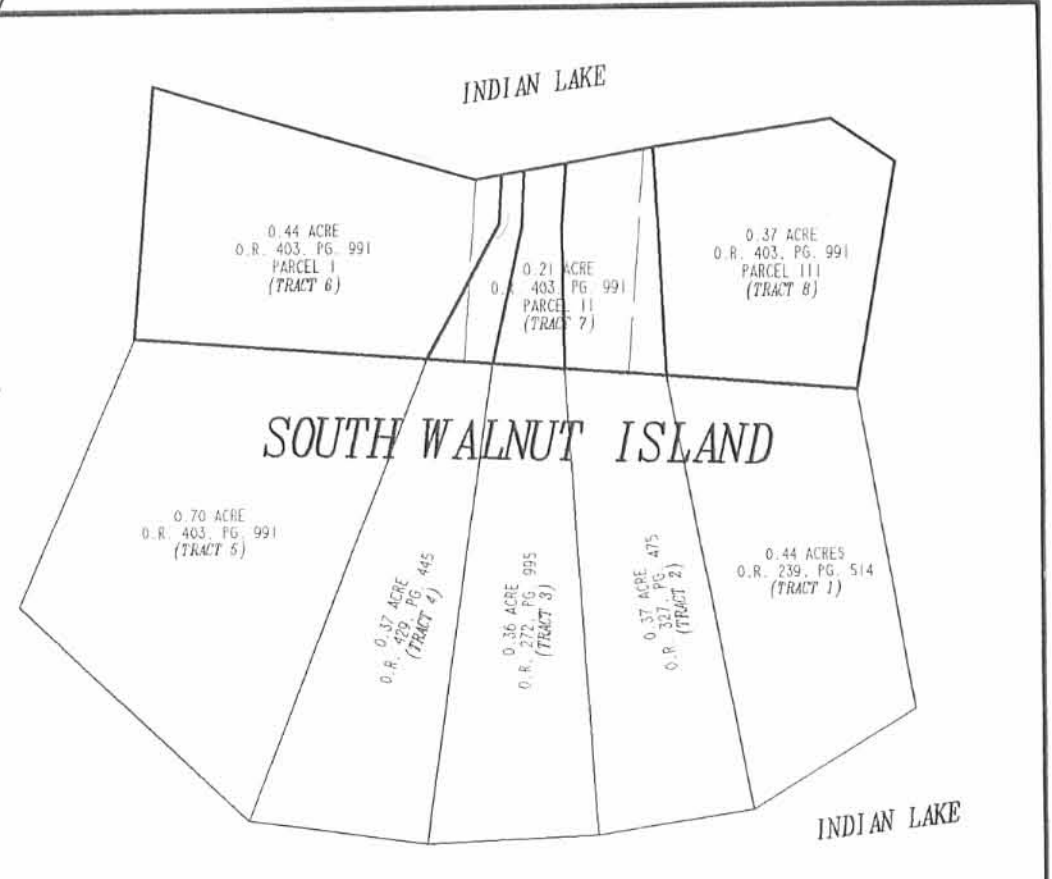


- LEGEND**
- 5/8 INCH IRON ROD SET
 - ⊙ MAG NAIL SET
 - ⊕ CHISELED "X" FOUND IN CONCRETE
 - 3/4 INCH IRON ROD FOUND

INDIAN LAKE



**SURVEY OF FIVE TRACTS OUT OF THE
DIXIE LEE MURRAY AND
JACK A. MURRAY, TRUSTEES
0.44 ACRE, 0.21 ACRE AND 0.37 ACRE TRACTS
OFFICIAL RECORD 403, PAGE 991
PARCEL I, PARCEL II AND PARCEL III
PART OF SOUTH WALNUT ISLAND
TRACT 6, TRACT 7 AND TRACT 8
VIRGINIA MILITARY SURVEY 13393
STOKES TOWNSHIP
LOGAN COUNTY, OHIO**



SURVEYED BY:
Jeffrey I. Lee
JEFFREY I. LEE
PROFESSIONAL SURVEYOR 6359
OCTOBER 31, 2001
COPYRIGHT 2001 BY:
LEE SURVEYING & MAPPING CO., INC.
117 North Madriver Street
BELLEFONTAINE, OHIO 43311
(937) 593-7335

INDEXED ON MAP
3969 - 3P