

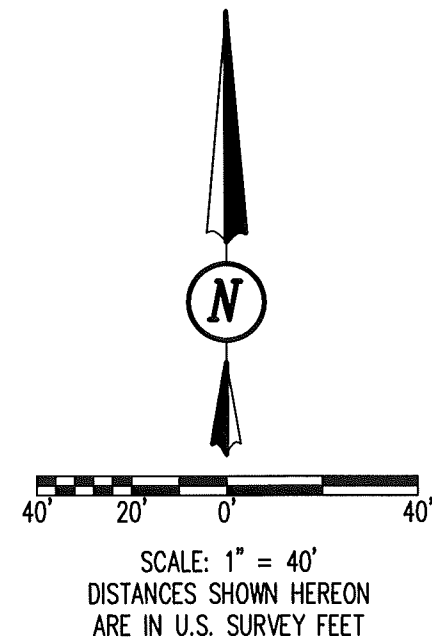
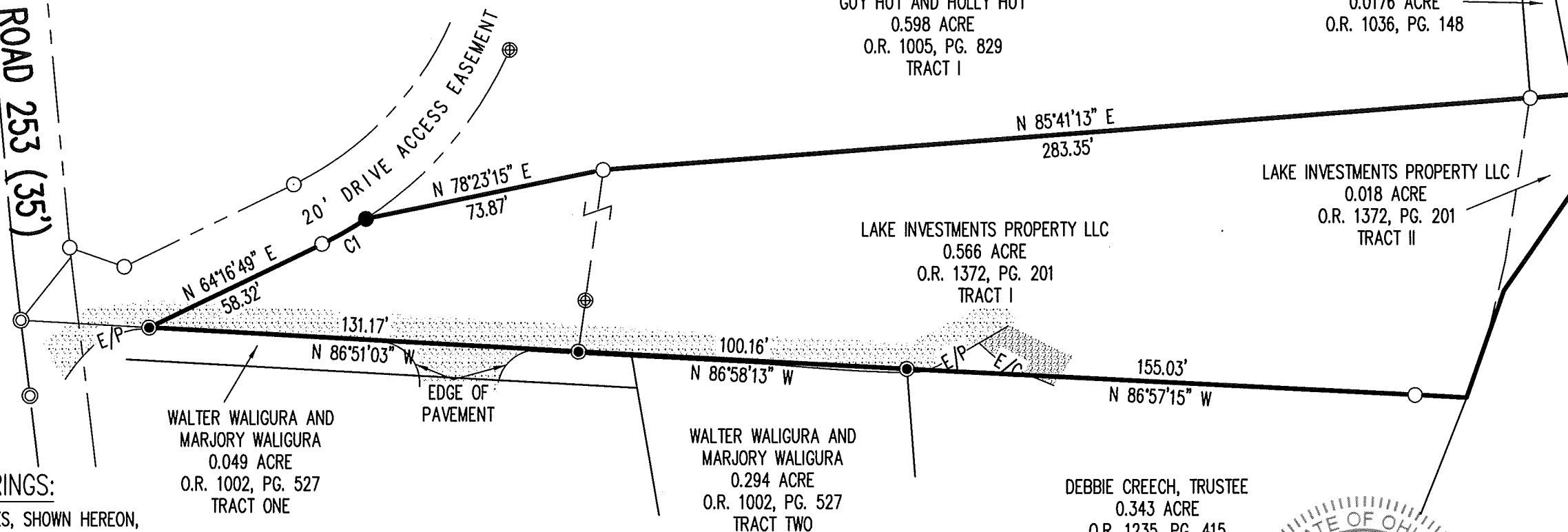
DEED & SURVEY REFERENCES:

REFERENCE DEEDS AS SHOWN HEREON

LOGAN COUNTY ENGINEER'S MAP ROOM
FILE 2011

CURVE	DELTA ANGLE	RADIUS	ARC LENGTH	CHORD BEARING	CHORD LENGTH
C1	7°21'42"	120.00'	15.42'	N 60°27'13" E	15.41'

TOWNSHIP ROAD 253 (35')



INDIAN
LAKE

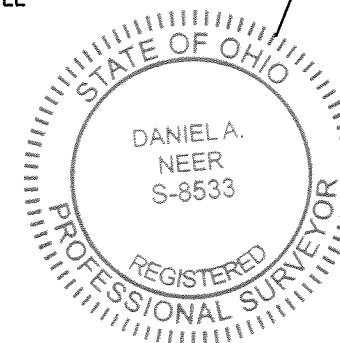
BASIS FOR BEARINGS:

BEARINGS AND DISTANCES, SHOWN HEREON, ARE DERIVED FROM GPS OBSERVATIONS BASED ON GRID NORTH, OHIO STATE PLANE COORDINATE SYSTEM, NORTH ZONE, NAD83 (2011, EPOCH 2010).

THIS SURVEY WAS PREPARED IN THE ABSENCE OF A COMPLETE AND ACCURATE TITLE SEARCH AND DOES NOT GUARANTEE TITLE.

OCCUPATION NOTE:

NO EVIDENCE OF OCCUPATION ALONG BOUNDARY LINES UNLESS OTHERWISE SHOWN



Daniel A. Neer
DANIEL A. NEER
PROFESSIONAL SURVEYOR NO. 8533
FEBRUARY 10, 2020

COPYRIGHT 2020 BY:
DLZ
117 N. Madriver Street • Bellefontaine, OH 43311
(937) 593-7335 • www.dlz.com
Project #2021-2014.00

LEGEND	
⊙ MAG NAIL FOUND	● 5/8 INCH BY 30 INCH IRON REBAR SET WITH PLASTIC I.D. CAP STAMPED "DLZ OHIO INC."
⊙ MAG NAIL SET	C/L = CENTER-LINE
⊙ 1 INCH IRON PIPE FOUND	R/W = RIGHT-OF-WAY
○ 5/8 INCH IRON ROD FOUND	E/P = EDGE OF PAVEMENT
	E/C = EDGE OF CONCRETE

PARTIAL RETRACEMENT
VIRGINIA MILITARY SURVEY 12276
WOLF ISLAND
STOKES TOWNSHIP
LOGAN COUNTY, OHIO

DRAWN BY:	DESCRIPTION	REV. NO.	DATE
KSS			2/11/2020

INDEXED ON MAP
4010