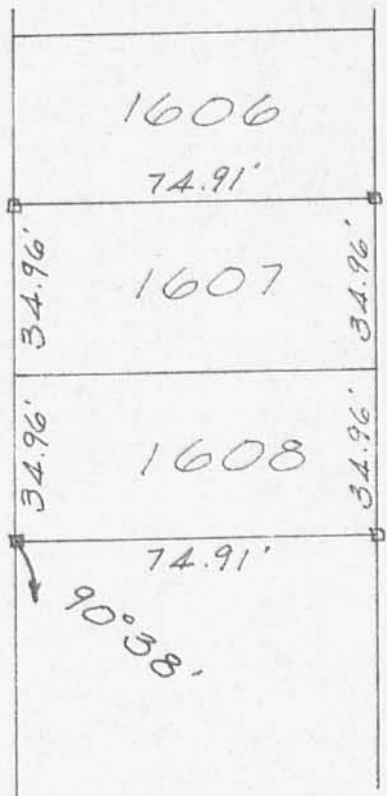


SURVEY OF LOTS 1607-1608  
 CHIPPEWA PARK No.3  
 STOKES TOWNSHIP  
 LOGAN COUNTY, OHIO  
 SEPT. 9, 1967  
 SCALE 1" = 40'

*Dan L. Dodson*

Dan L. Dodson  
 Reg. Surveyor 4270  
 Bellefontaine, Ohio

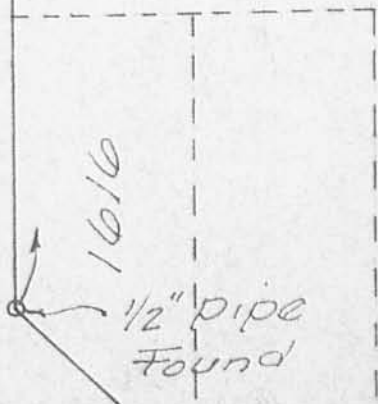
KICKAPOO PATH 35'



270.69'

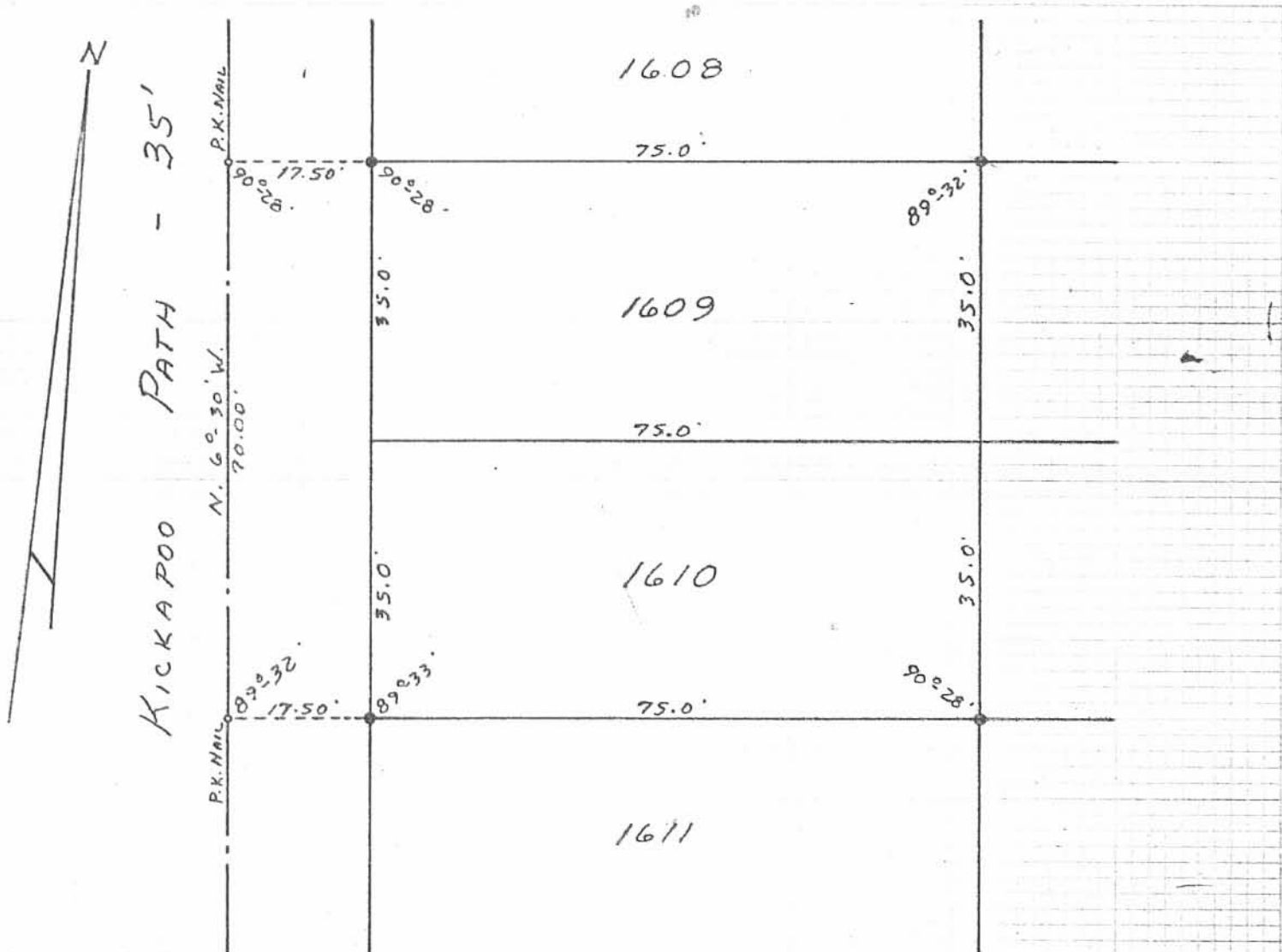
□ = 18" fld. hub set

SEMINOLE



1P  
 4169

INDEXED ON MAP



• -  $\frac{5}{8}$ "  $\phi$  IRON BARS.

INDEXED ON MAP  
4169

ZP

SURVEYED AND PLATED BY:  
DANIEL E. GILBERT, P.S.  
REG. SUR. No. 5402  
1041 N. MAIN ST.  
BELLEFONTAINE, OHIO 43311

WANTUCH SURVEY  
LOTS 1609-1610  
CHIPPEWA PARK No. 3  
V.M.S. No. 12276  
STOKES TOWNSHIP  
LOGAN COUNTY, OHIO  
JUNE 25, 1977

SCALE: 1" = 20'

SURVEY OF  
 LOTS 1607-1608  
 Chippawa No. 3  
 For Harry Bard  
 Morral, Ohio

1040.31    719.01  
 - 0.50  
 1039.81

- A = 1/4" pipe found & used
- B = " " " "
- C = 1/2" pipe found 8" deep & used
- o = P-K nail set on  $\Phi$  of 3'
- = hkd 18" hub set on lot corner

Set P-K out KICKAPOO @ S. line Blue Jkt.  
 using A & 35.00' S. of B. as line -  
 found "C", set P-K 17.50' W. for foresight  
 turned  $\angle$   $90^{\circ}38'$  (plot  $90^{\circ}37'$ ) -  
 Meas KICKAPOO from P-K @ Blue Jkt to P-K  
 @ "C" = 1040.3 - set on P-K @ "C" turned  
 $89^{\circ}22'$  missed "C" 0.50' -  
 Meas. Dist from "C" to S. line Blue Jacket  
 = 1039.8 (Plot = 1041.0) = 1.2 short  
 $1039.8 / 1041.0 = 0.99884$

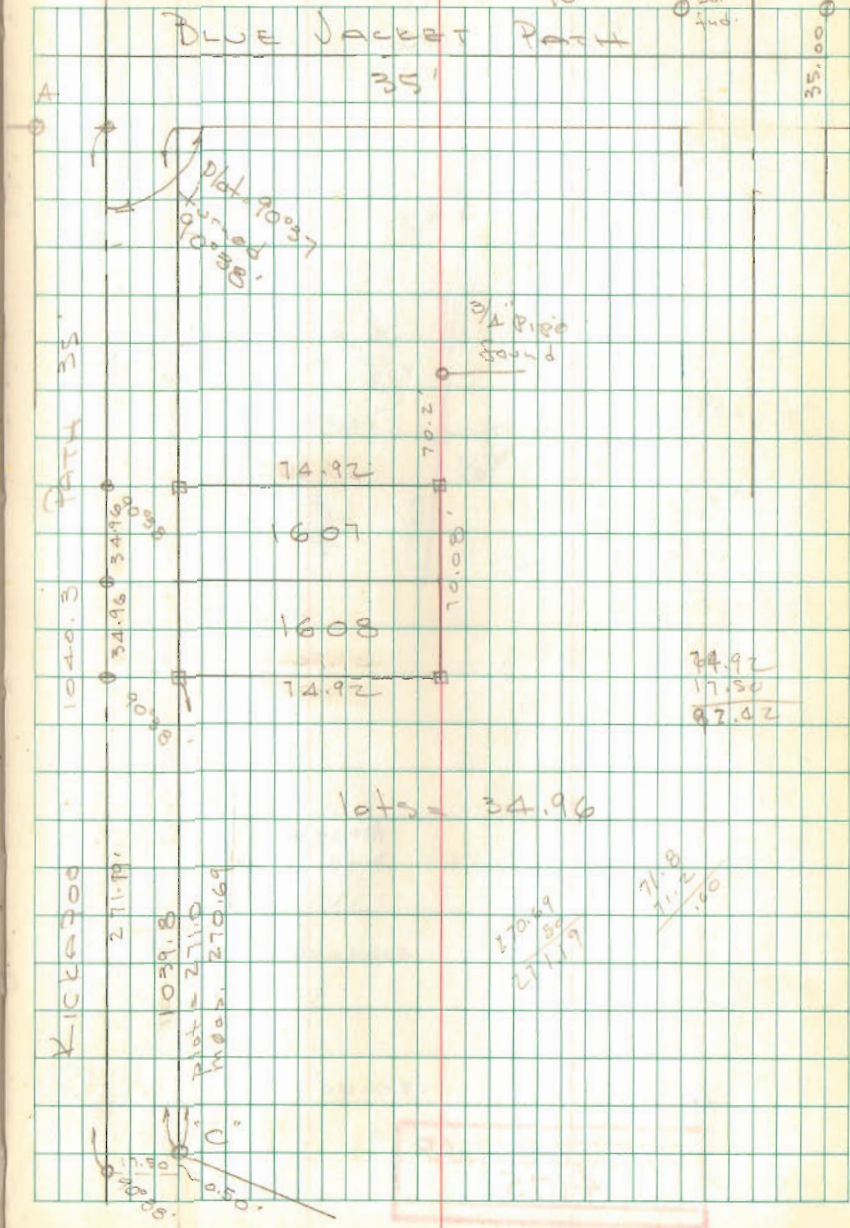
INDEXED ON MAP  
 4169

Dodson  
 Nichols

9/19/67  
 Rain  
 70°

14  
 B  
 35.00'

BLUE JACKET PATH  
 35'



KICKAPOO

BLUE JACKET PATH

1040.3

271.19'

1039.8  
 Plot = 271.0  
 Meas. 270.69

74.92  
 1607  
 1608  
 74.92

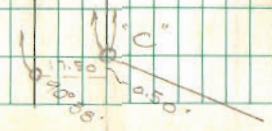
1/4" Pipe found  
 70.2  
 70.08

34.92  
 17.50  
 52.42

lots = 34.96

270.69  
 80  
 271.19

34.92  
 17.50  
 52.42



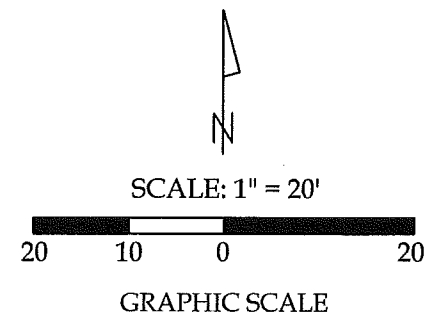
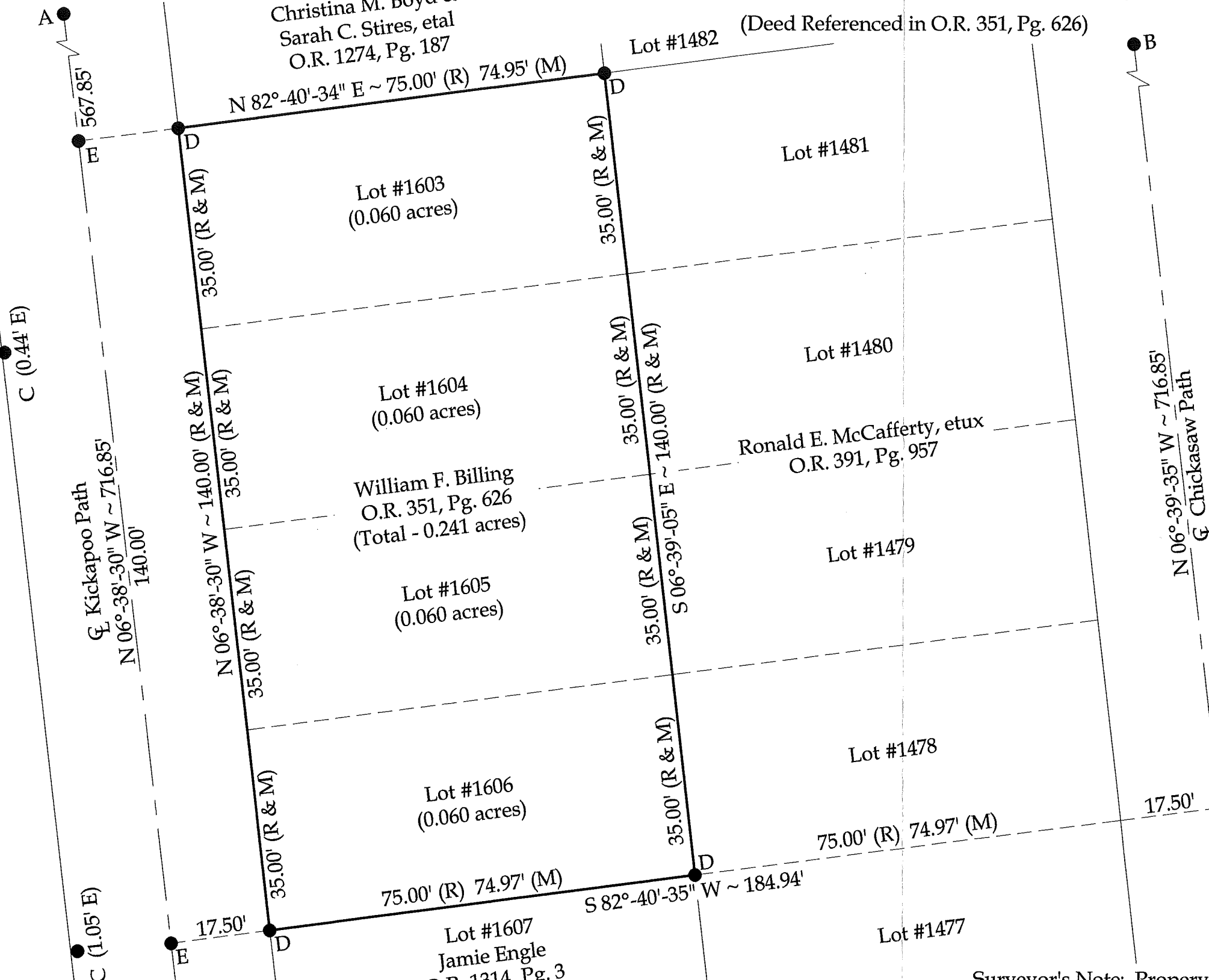
2-3-20

APPROVED

Survey of Parcels #43-005-18-07-009-000, 43-005-18-07-009-001 & 43-005-18-07-009-002 and being Lots #1603, 1604, 1605 and 1606 of Chippewa Park No. 3 (P.C. A, Slide 235) in V.M.S. #12276, Stokes Township, Logan County, Ohio.

Lot #1602  
Christina M. Boyd &  
Sarah C. Stires, etal  
O.R. 1274, Pg. 187

(Deed Referenced in O.R. 351, Pg. 626)



Legend

- A = Existing PK Nail at the intersection of the centerlines of Blue Jacket Path and Kickapoo Path
- B = Existing Railroad Spike at the intersection of the centerlines of Blue Jacket Path and Chickasaw Path
- C = Existing #5 Rebar
- D = Set #5 Rebar
- E = Set Mag Nail



This plat represents an actual boundary survey completed under my direct supervision on December 16, 2019.

Kyle J. Binkley, P.S. #8587

**BASIS OF BEARINGS:** The system of bearings for this plat and legal description is based on the Ohio State Plane - North Coordinate System NAD83 (2011).

**NOTE:** All distances on this plat are measured unless otherwise noted.

**Surveyor's Note:** Property lines were established by creating a best fit line of monumentation found on both sides of Kickapoo Path and Chickasaw Path, which is not shown on this plat.

CLIENT: Dave Billings			
SURVEYED BY: T.J.S./T.E.W.	DATE: 12-16-2019	DRAWN BY: K.J.B.	CHECKED BY: K.J.B.
SCALE: 1" = 20'	PAGE OF PAGES		

INDEXED ON MAP  
4169