

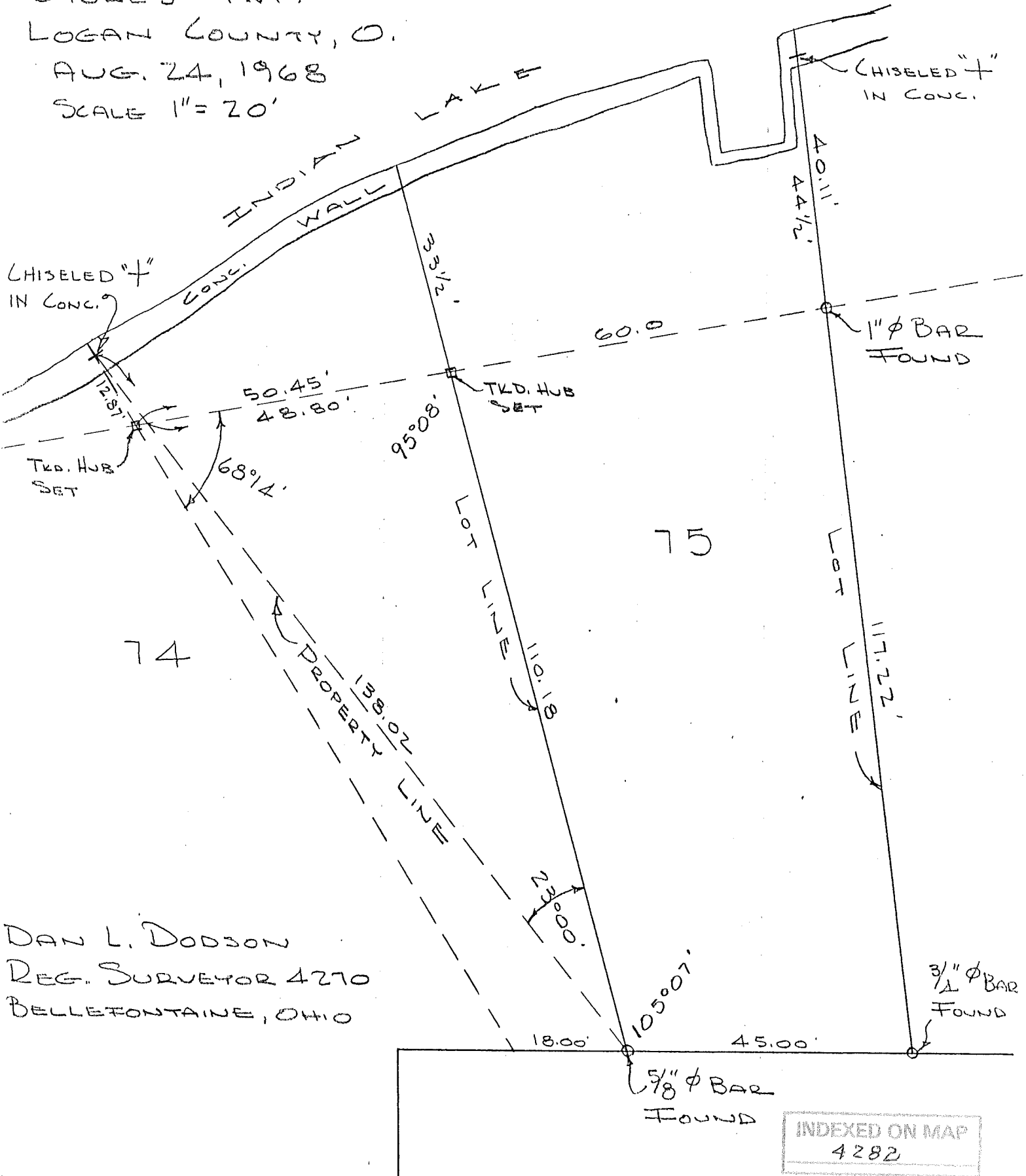
SURVEY OF LOT 75 & 74 Pt.  
SEMINOLE SHORES SUB'D. 2

STOKES TWP.

LOGAN COUNTY, O.

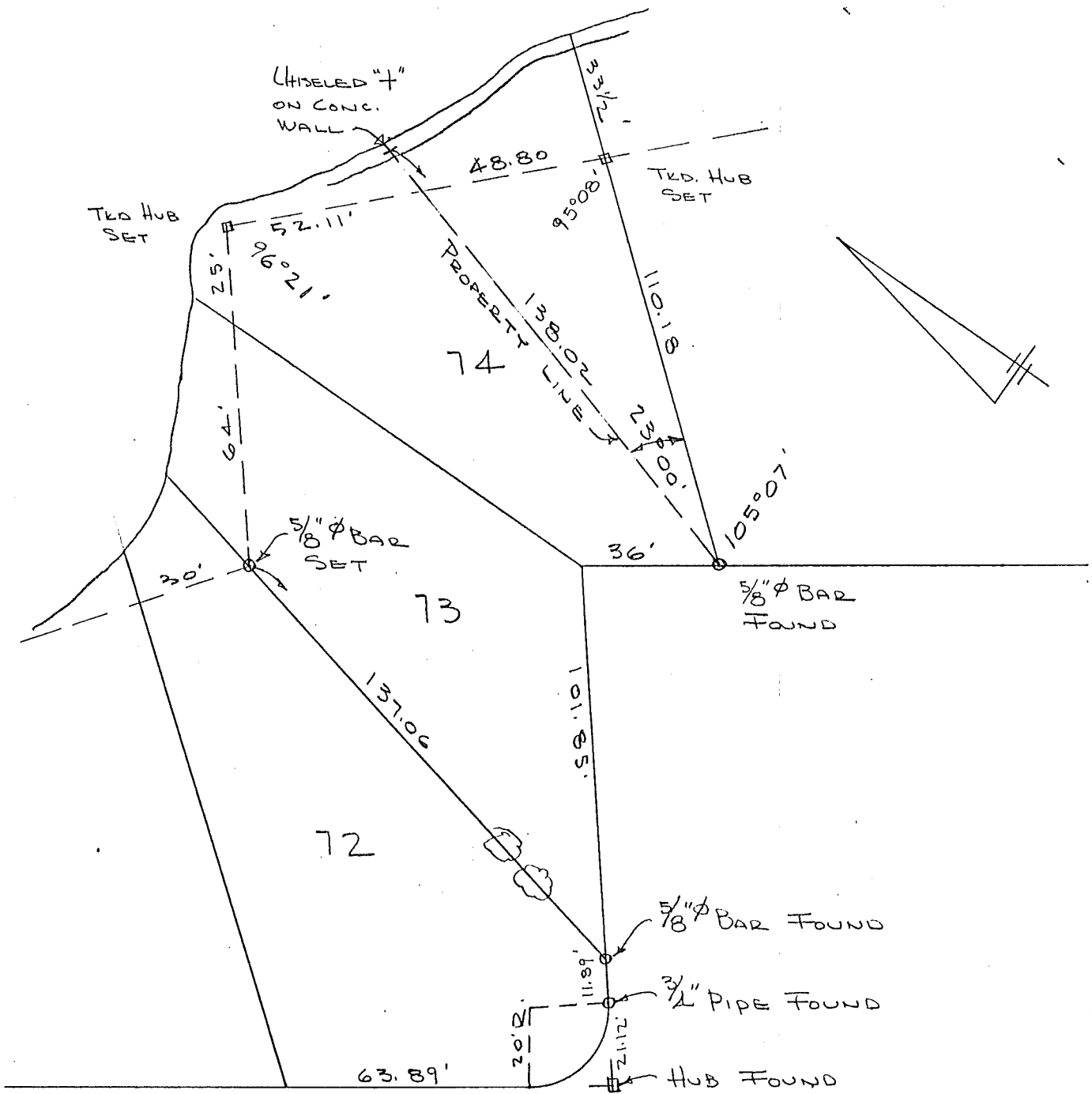
AUG. 24, 1968

SCALE 1" = 20'



DAN L. DODSON  
REG. SURVEYOR 4270  
BELLEFONTAINE, OHIO

INDEXED ON MAP  
4282



SURVEY OF LOT 73 & 74 Pt.  
 SEMINOLE SHORES SUB'D, 2  
 STOKES TOWNSHIP  
 LOGAN COUNTY, OHIO  
 AUG. 24, 1968  
 SCALE 1" = 40'

INDEXED ON MAP  
 4282

DAN L. DOOSON  
 REG. SURVEYOR 4270  
 BELLEFONTAINE, OHIO

REC'D 3-8-00 GMM OK ✓

# Lee Surveying and Mapping Co., Inc.

Land Surveys • Topography • Subdivisions • Construction Layout

117 N. Madriver St.  
Bellefontaine OH 43311



Phone: (937) 593-7335  
Fax: (937) 593-7444

## WESTERHEIDE 0.322 ACRES

Lying in Seminole Shores Subdivision No. 2 (Plat Cabinet A, Slide 253), Stokes Township, Logan County, Ohio.

Being all of the James R. Davis Lot 73 and part Lot 74 of Seminole Shores Subdivision No. 2 (Plat Cabinet A, Slide 253) as deeded in Official Record 220, Page 995 of the Logan County records of Deeds and being more particularly described as follows:

Beginning at a 1 inch iron pipe found on the north right-of-way line of Huron Drive (30 feet wide) at the southeast corner of Lot 74.

THENCE, with the northerly right-of-way line of Huron Drive, N 51°-47'-25" W, a distance of 36.00 feet to a point.

THENCE, with the westerly right-of-way line of Huron Drive, S 36°-10'-20" W, a distance of 101.91 feet to a MAG nail set.

THENCE, with the east line of Lot 72, N 03°-26'-35" W, a distance of 150.46 feet to a point, passing a 1 inch iron pipe found at 135.57 feet.

THENCE, with the shoreline of Indian Lake, N 54°-17'-59" E a distance of 27.79 feet to a point on the face of a seawall.

THENCE, with the face of the seawall the following two courses:

N 05°-59'-26" W, a distance of 18.74 feet to a point at an angle in the seawall.

N 68°-57'-54" E, a distance of 4.03 feet to a point at an angle in the seawall.

THENCE, N 12°-27'-08" E, a distance of 18.66 feet to a point at an angle in the seawall.

THENCE, with the face of the seawall the following three courses:

N 46°-10'-34" E, a distance of 8.84 feet to a point at an angle in the seawall.

N 62°-55'-56" E, a distance of 16.08 feet to a point at an angle in the seawall.

S 68°-07'-40" E, a distance of 51.66 feet to a point at the end of the seawall.

THENCE, S 09°-09'-37" E, a distance of 1.09 feet to a point at the end of another seawall.

# Lee Surveying and Mapping Co., Inc.

Land Surveys • Topography • Subdivisions • Construction Layout

117 N. Madriver St.  
Bellefontaine OH 43311



Phone: (937) 593-7335  
Fax: (937) 593-7444


THENCE, with the face of another seawall, S 87°-14'-49" E, a distance of 0.27 feet to a point.

THENCE, with the west line of the Shelley J. Wammes part Lot 74 (O.R. 424, Pg. 613), S 00°-00'00" E, a distance of 137.81 to the point of beginning, passing a 5/8 inch iron rod found at 13.21 feet.

Containing 0.322 acre.

The basis for bearings is the westerly right-of-way line of Huron Drive being S 36°-10'-20" W and all other bearings are from angles and distances measured in a field survey by Lee Surveying and Mapping Co., Inc. on February 29, 2000.

Description prepared by:

  
Jeffrey I. Lee  
Professional Surveyor 6359  
March 1, 2000  
Revised March 7, 2000



ORIGINAL STAMP L-2895

3D-2

4282

REC'D 4-18-00 SMM OK ✓

# Lee Surveying and Mapping Co., Inc.

Land Surveys • Topography • Subdivisions • Construction Layout

117 N. Madriver St.  
Bellefontaine OH 43311



Phone: (937) 593-7335  
Fax: (937) 593-7444

## INGRESS/EGRESS EASEMENT ON LOT 73 0.002 ACRE

Lying in Virginia Military Survey 12276, Stokes Township, Logan County, Ohio.

Being an ingress/egress easement over the southwest corner of Lot 73 of Seminole Shores Subdivision No. 2 as described in Plat Cabinet A, Slide 253 of the Logan County Records of Plats and being more particularly described as follows:

Beginning at a MAG nail set on the southwest corner of said Lot 73 and the southeast corner of Lot 72.

THENCE, with the east line of Lot 72, N 3°-26'-35" W, a distance of 18.00 feet to a point.

THENCE, S 54°-29'-45" E, a distance of 11.48 feet to a point.

THENCE, with the southerly line of the Lot 73 and on the right-of-way of Huron Drive (30 feet wide), S 36°-10'-20" W, a distance of 14.00 feet to the point of beginning.

Containing 0.002 acre.

The basis for bearings is the southerly line of Lot 73, being S 36°-10'-20" W, and all other bearings are from angles and distances measured in a field survey by Lee Surveying and Mapping Co., Inc. on February 29, 2000

Description prepared by:

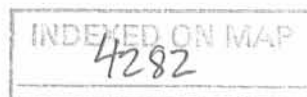
A handwritten signature in black ink, appearing to read 'Jeffrey I. Lee', written over a faint circular stamp.

Jeffrey I. Lee  
Professional Surveyor 6359  
April 14, 2000



ORIGINAL STAMP IN GREEN

L-2895



3D-3



9-25-12 smy en

# Lee Surveying and Mapping Co., Inc.

Land Surveys • Topography • Subdivisions • Construction Layout

117 N. Madriver St.  
Bellefontaine OH 43311



Phone: (937) 593-7335  
Fax: (937) 593-7444  
surveys@lsminc.us

## STATE OF OHIO INDIAN LAKE RESERVOIR LANDS 0.031 ACRE

Lying in Virginia Military Survey 12276, Stokes Township, Logan County, Ohio.

Being out of the State of Ohio Indian Lake Reservoir Lands.

Commencing on a  $\frac{3}{4}$  inch iron rod found on the southwest corner of Lot 76 of Seminole Shores Subdivision No. 2 (Plat Cabinet A, Slide 253) on the north right-of-way of Huron Drive.

THENCE, with the south line of Lot 76 and the north right-of-way of Huron Drive (30 feet wide), S 51°-47'-25"E, a distance of 45.00 feet to a point on the southeast corner of Lot 76 and the southwest corner of Lot 77.

THENCE, with the east line of Lot 76 and the west line of Lot 77, N 37°-46'-46"E, a distance of 162.23 feet to a  $\frac{5}{8}$  inch iron rod set at the TRUE POINT OF BEGINNING, passing a  $\frac{1}{2}$  inch iron rod found at 0.24 feet.

THENCE, with the east line of Lot 76 and the west line of Lot 77 extended, N 37°-46'-46"E, a distance of 18.57 feet to a point on the face of a concrete seawall, passing a MAG nail set at 16.95 feet.

THENCE, with the face of the concrete seawall, the following five courses:

S 60°-05'-15"E, a distance of 7.63 feet to a point.

S 88°-59'-19"E, a distance of 14.12 feet to a point.

S 65°-08'-17"E, a distance of 4.73 feet to a point.

S 27°-41'-27"E, a distance of 11.36 feet to a point.

S 15°-01'-39"E, a distance of 14.02 feet to a point on the corner of the concrete boat well.

THENCE, S 19°-59'-49"E, a distance of 18.07 feet to a point on the corner of the concrete boat well.

THENCE, with the face of the concrete seawall, S 36°-45'-17"E, a distance of 1.96 feet to a point.

# Lee Surveying and Mapping Co., Inc.

Land Surveys • Topography • Subdivisions • Construction Layout

117 N. Madriver St.  
Bellefontaine OH 43311



Phone: (937) 593-7335  
Fax: (937) 593-7444  
surveys@lsminc.us

THENCE, with the east line of Lot 77 and the west line of Lot 78 extended, S 43°-35'-54"W, a distance of 15.73 feet to a MAG nail set on the northeast corner of Lot 77 and the northwest corner of Lot 78, passing a MAG nail set at 0.73 feet.

THENCE, with the approximate north boundary lines of Lot 77, the following three courses:

N 46°-10'-24"W, a distance of 16.67 feet to a MAG nail set.

N 28°-15'-54"W, a distance of 39.59 feet to a MAG nail set.

S 82°-12'-50"W, a distance of 11.14 feet to the point of beginning.

Containing 0.031 acre.

Property is subject to any and all previous easements and rights-of-way of record.

The basis for bearings is the north right-of-way of Huron Drive, being S 51°-47'-25"E, and all other bearings are from angles and distances measured in a field survey by Lee Surveying and Mapping Co., Inc. on September 20, 2012.



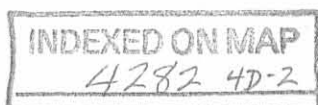
ORIGINAL STAMP IN GREEN

Description prepared by:

A handwritten signature in black ink that reads 'William K. Bruce'.

William K. Bruce  
Professional Surveyor 7437  
September 21, 2012

54040912

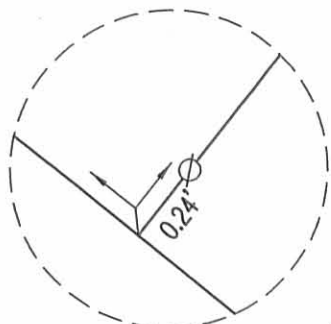




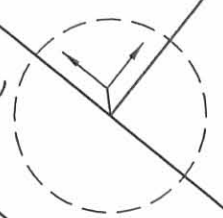
REC'D 9-25-12 SMYOK

2 WORKING DAYS  
**BEFORE YOU DIG**  
OHIO UTILITIES PROTECTION SERVICE  
CALL TOLL FREE **800-362-2764**

- LEGEND:
- ⊙ 3/4 INCH IRON ROD FOUND
  - ⊕ 1/2 INCH IRON ROD FOUND
  - ⊙ 1 INCH IRON ROD FOUND
  - ⊕ 1-1/4 INCH IRON ROD FOUND
  - 5/8 INCH IRON ROD SET WITH PLASTIC I.D. CAP STAMPED "LSM 7437"
  - ⊙ MAG NAIL SET

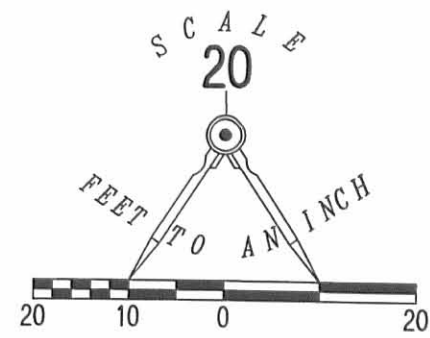
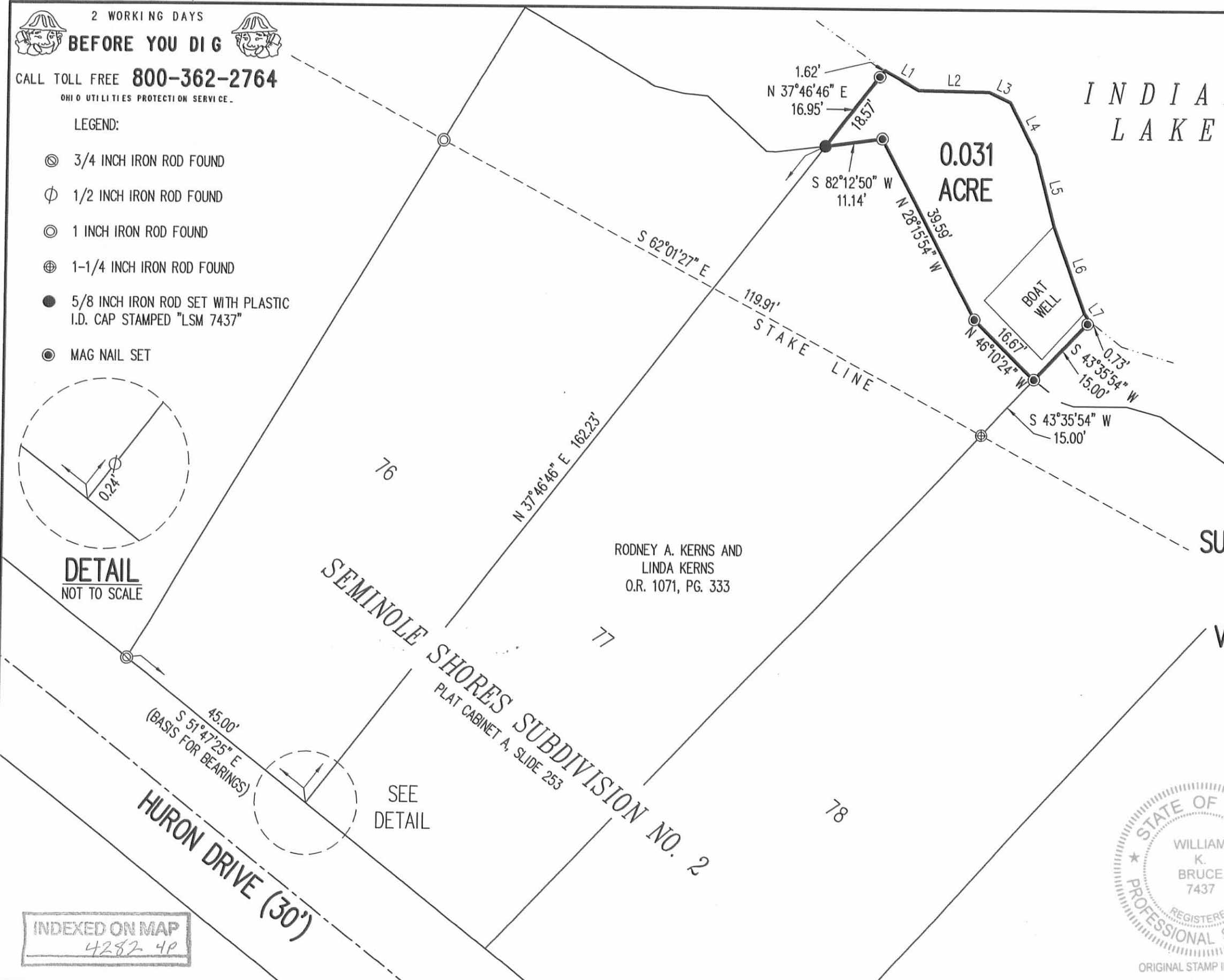


**DETAIL**  
NOT TO SCALE



SEE  
DETAIL

INDEXED ON MAP  
4282-4P



LINE	BEARING	DISTANCE
L1	S 60°05'15" E	7.63'
L2	S 88°59'19" E	14.12'
L3	S 65°08'17" E	4.73'
L4	S 27°41'27" E	11.36'
L5	S 15°01'39" E	14.02'
L6	S 19°59'49" E	18.07'
L7	S 36°45'17" E	1.96'

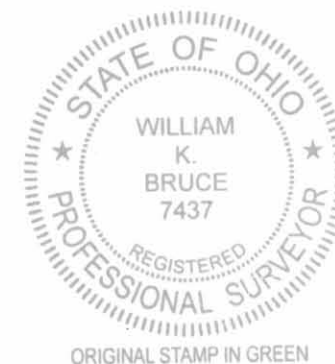
RODNEY A. KERNS AND  
LINDA KERNS  
O.R. 1071, PG. 333

**SURVEY OF 0.031 ACRE OUT OF THE  
STATE OF OHIO  
INDIAN LAKE RESERVOIR LANDS  
VIRGINIA MILITARY SURVEY 12276  
STOKES TOWNSHIP  
LOGAN COUNTY, OHIO**

SURVEYED BY:

*William K. Bruce*

WILLIAM K. BRUCE  
PROFESSIONAL SURVEYOR 7437  
SEPTEMBER 20, 2012



ORIGINAL STAMP IN GREEN

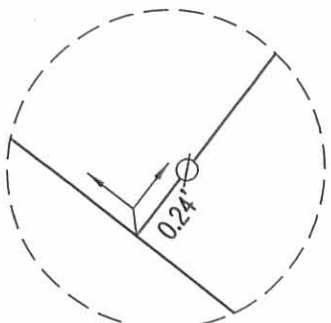
COPYRIGHT 2012 BY:  
**LEE SURVEYING & MAPPING CO., INC.**  
117 North Madriver Street  
BELLEFONTAINE, OHIO 43311  
(937) 593-7335  
WWW.LSMINC.US  
surveys@lsminc.us

KSS D0912 54040912 L-5404-3

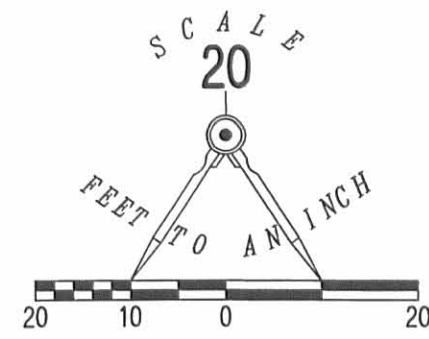
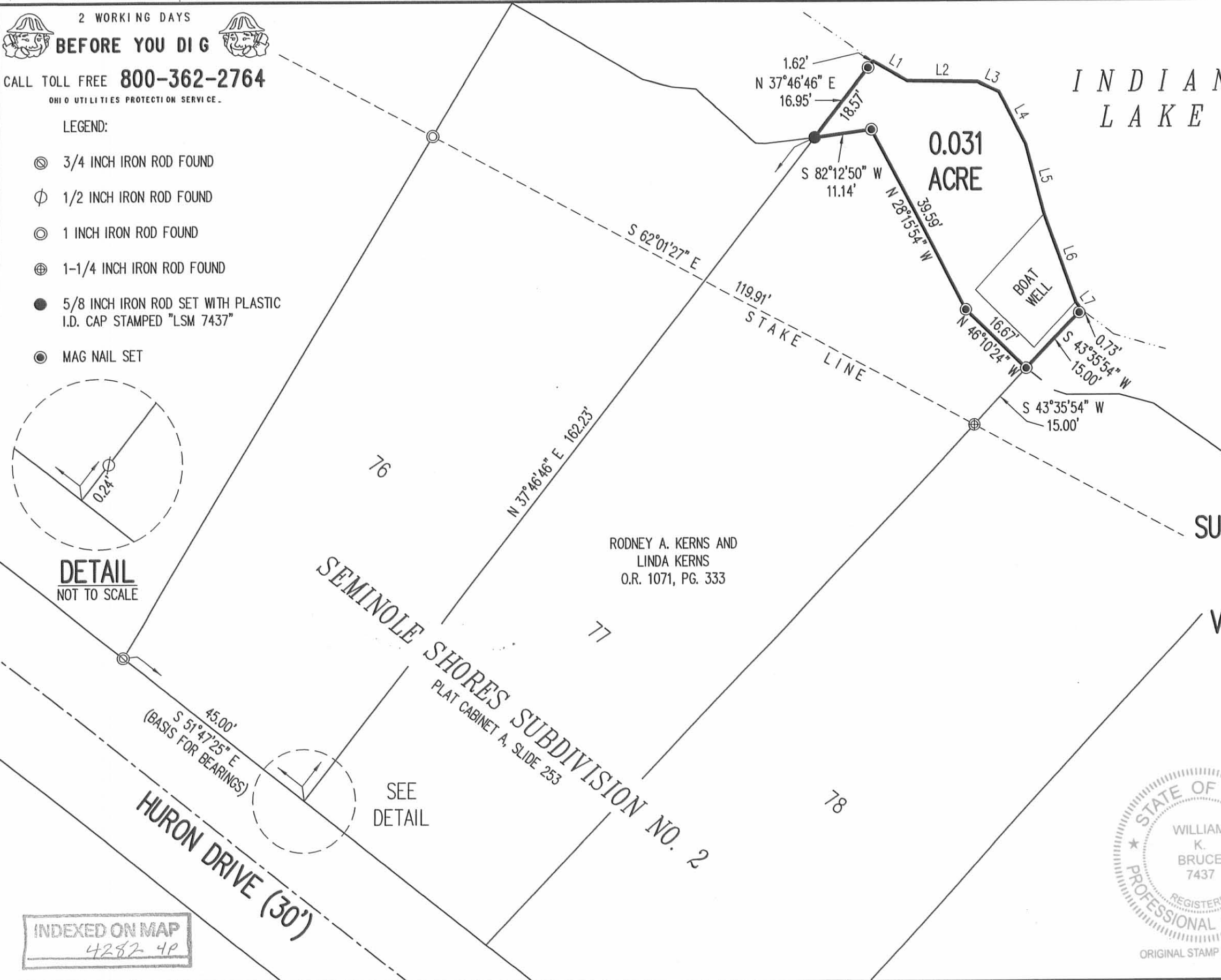
REVID 9-25-12 SMM/OL

2 WORKING DAYS  
**BEFORE YOU DIG**  
CALL TOLL FREE **800-362-2764**  
OHIO UTILITIES PROTECTION SERVICE.

- LEGEND:
- ⊙ 3/4 INCH IRON ROD FOUND
  - ⊕ 1/2 INCH IRON ROD FOUND
  - ⊙ 1 INCH IRON ROD FOUND
  - ⊕ 1-1/4 INCH IRON ROD FOUND
  - 5/8 INCH IRON ROD SET WITH PLASTIC I.D. CAP STAMPED "LSM 7437"
  - ⊙ MAG NAIL SET



**DETAIL**  
NOT TO SCALE



LINE	BEARING	DISTANCE
L1	S 60°05'15" E	7.63'
L2	S 88°59'19" E	14.12'
L3	S 65°08'17" E	4.73'
L4	S 27°41'27" E	11.36'
L5	S 15°01'39" E	14.02'
L6	S 19°59'49" E	18.07'
L7	S 36°45'17" E	1.96'

**SURVEY OF 0.031 ACRE OUT OF THE STATE OF OHIO  
INDIAN LAKE RESERVOIR LANDS  
VIRGINIA MILITARY SURVEY 12276  
STOKES TOWNSHIP  
LOGAN COUNTY, OHIO**

SURVEYED BY:

*William K. Bruce*

WILLIAM K. BRUCE  
PROFESSIONAL SURVEYOR 7437  
SEPTEMBER 20, 2012

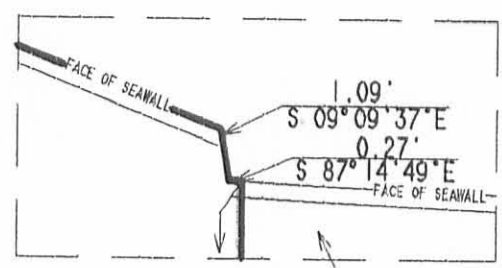
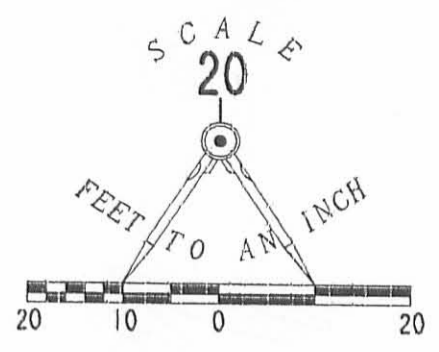


COPYRIGHT 2012 BY:  
**LEE SURVEYING & MAPPING CO., INC.**  
117 North Madriver Street  
BELLEFONTAINE, OHIO 43311  
(937) 593-7335  
WWW.LSMINC.US  
surveys@lsminc.us

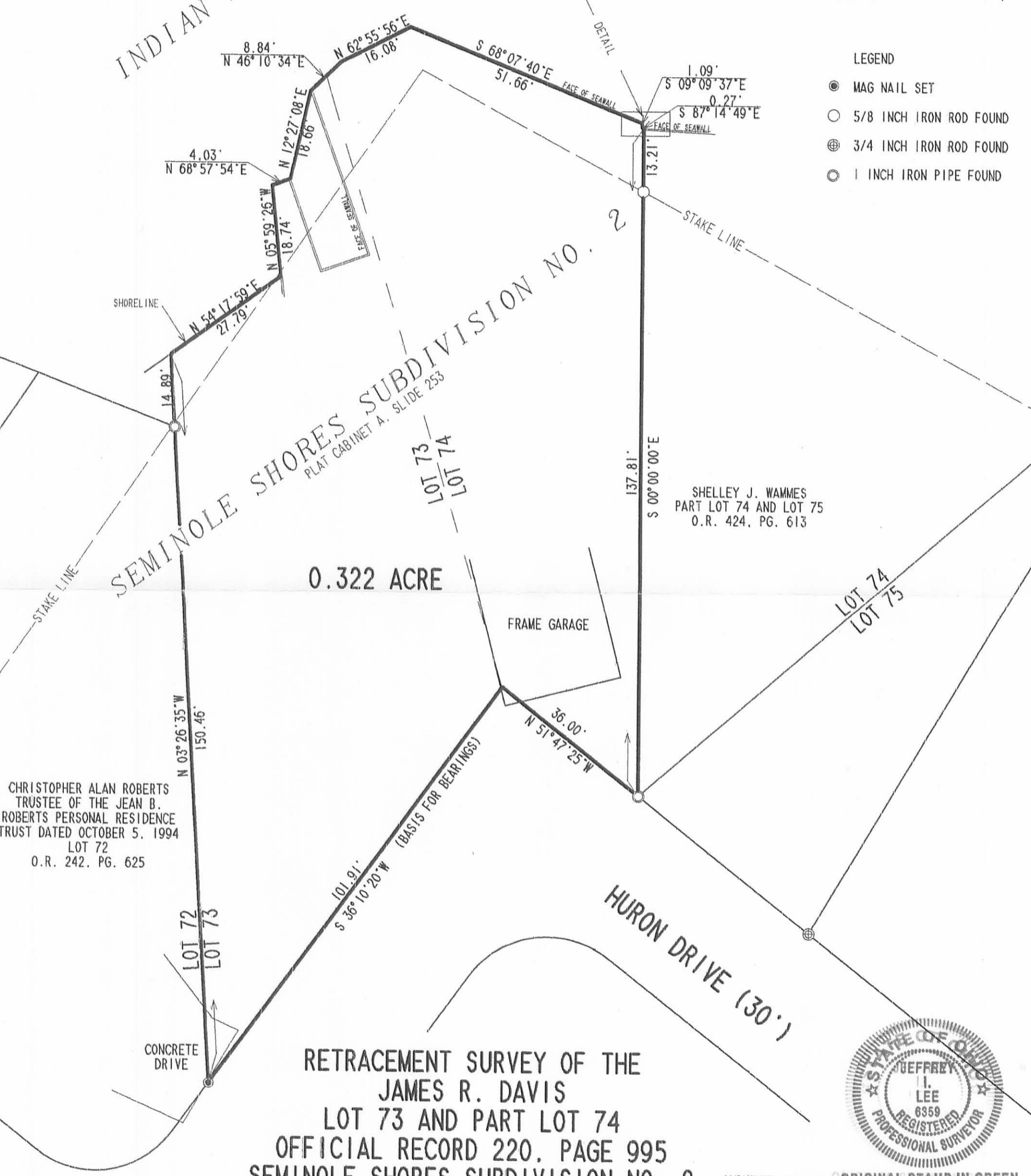
KSS D0912 54040912 L-5404-3

INDEXED ON MAP  
4282-4P

REC'D 3-8-00 SML/CLV



INDIAN LAKE



- LEGEND
- MAG NAIL SET
  - 5/8 INCH IRON ROD FOUND
  - ⊕ 3/4 INCH IRON ROD FOUND
  - ⊙ 1 INCH IRON PIPE FOUND

CHRISTOPHER ALAN ROBERTS  
TRUSTEE OF THE JEAN B.  
ROBERTS PERSONAL RESIDENCE  
TRUST DATED OCTOBER 5, 1994  
LOT 72  
O.R. 242, PG. 625

SHELLEY J. WAMMES  
PART LOT 74 AND LOT 75  
O.R. 424, PG. 613

RETRACEMENT SURVEY OF THE  
JAMES R. DAVIS  
LOT 73 AND PART LOT 74  
OFFICIAL RECORD 220, PAGE 995  
SEMINOLE SHORES SUBDIVISION NO. 2  
PLAT CABINET A, SLIDE 253  
STOKES TOWNSHIP  
LOGAN COUNTY, OHIO

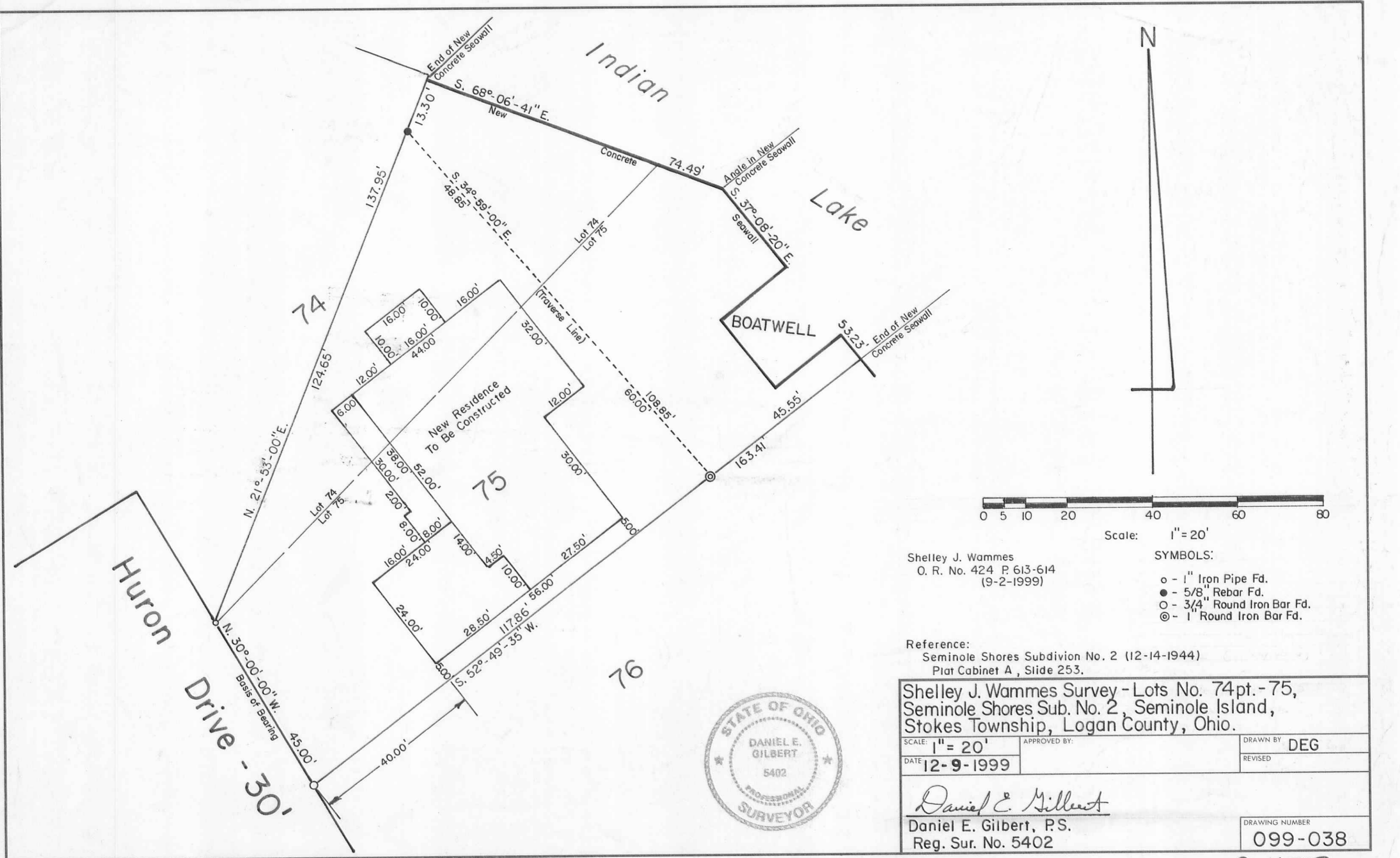


SURVEYED BY **ORIGINAL STAMP IN GREEN**  
*Jeffrey I. Lee*  
JEFFREY I. LEE  
PROFESSIONAL SURVEYOR 6359  
FEBRUARY 29, 2000

COPYRIGHT 2000 BY:  
LEE SURVEYING & MAPPING CO., INC.  
117 North Madriver Street  
BELLEFONTAINE, OHIO 43311  
(937) 593-7335

2 WORKING DAYS  
**BEFORE YOU DIG**  
CALL TOLL FREE **800-362-2764**  
OHIO UTILITIES PROTECTION SERVICE.

INDEXED ON MAP  
4282 59



Shelley J. Wammes  
 O. R. No. 424 P. 613-614  
 (9-2-1999)

Scale: 1" = 20'

- SYMBOLS:
- - 1" Iron Pipe Fd.
  - - 5/8" Rebar Fd.
  - - 3/4" Round Iron Bar Fd.
  - ⊙ - 1" Round Iron Bar Fd.

Reference:  
 Seminole Shores Subdivin No. 2 (12-14-1944)  
 Plat Cabinet A, Slide 253.

Shelley J. Wammes Survey - Lots No. 74pt.-75, Seminole Shores Sub. No. 2, Seminole Island, Stokes Township, Logan County, Ohio.		
SCALE: 1" = 20'	APPROVED BY:	DRAWN BY DEG
DATE: 12-9-1999		REVISED
<i>Daniel E. Gilbert</i> Daniel E. Gilbert, P.S. Reg. Sur. No. 5402		DRAWING NUMBER 099-038



S-475



5-21-14

# Lee Surveying and Mapping Co., Inc.



Land Surveys • Topography • Subdivisions • Construction Layout

117 N. Madriver St.  
Bellefontaine OH 43311



Phone: (937) 593-7335  
Fax: (937) 593-7444  
surveys@lsminc.us

## SHOEMAKER, TRUSTEE 0.002 ACRE

Lying in Virginia Military Survey 12276, Stokes Township, Logan County, Ohio.

Being out of the Thomas E. Shoemaker, Trustee and Sandra Sue Shoemaker, Trustee Lot 73, Seminole Shores Subdivision No. 2, Plat Cabinet A, Slide 253, as deeded and described in Official Record 831, Page 576 of the Logan County Records of Deeds and being more particularly described as follows:

Beginning at a MAG nail set at the southwest corner of Lot 73 on the north right-of-way of Huron Drive (30 feet wide).

THENCE, with the west line of Lot 73, N 03°-26'-35"W, a distance of 20.77 feet to a 5/8 inch iron rod set.

THENCE, S 45°-14'-15"E, a distance of 13.39 feet to a MAG nail set.

THENCE, with the north right-of-way of Huron Drive, S 36°-10'-20"W, a distance of 14.00 feet to the point of beginning.

Containing 0.002 acre.

Property is subject to any and all previous easements and rights-of-way of record.

The basis for bearings is the north right-of-way of Huron Drive, being S 36°-10'-20"W, and all other bearings are from angles and distances measured in a field survey by Lee Surveying and Mapping Co., Inc. on May 19, 2014.

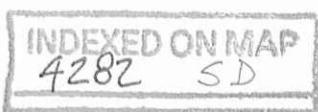
Description prepared by:

William K. Bruce  
Professional Surveyor 7437  
May 19, 2014



ORIGINAL STAMP IN GREEN

L-57390514



**APPROVED**

5-21-14

**SEMINOLE SHORES SUBDIVISION NO. 2**  
PLAT CABINET A, SLIDE 253

LOT 72  
LOT 73

THOMAS E. SHOEMAKER, TRUSTEE AND  
SANDRA SUE SHOEMAKER, TRUSTEE  
LOT 73, PART LOT 74  
O.R. 831, PG. 576

ROBB W. MITCHELL, TRUSTEE  
LOT 72  
O.R. 1140, PG. 637

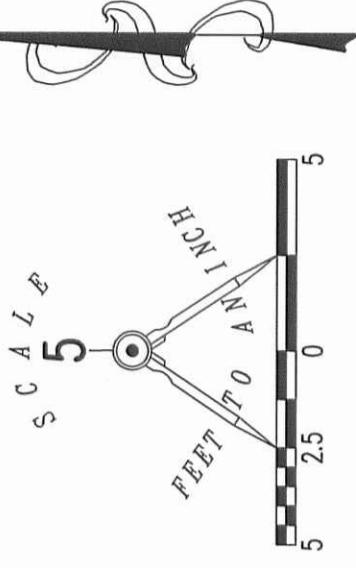
0.002 ACRE

HURON DRIVE (30 FEET WIDE)  
BASIS FOR BEARINGS  
S 36°10'20" W  
14.00'

CONCRETE DRIVE

20.77'  
N 03°26'35" W

S 45°14'15" E  
13.39'



LEGEND

● 5/8 INCH IRON ROD SET WITH PLASTIC I.D. CAP STAMPED "LSM7437"

⊙ MAG NAIL SET

A SURVEY OF A 0.002 ACRE TRACT  
THOMAS E. SHOEMAKER, TRUSTEE  
AND SANDRA SUE SHOEMAKER, TRUSTEE  
LOT 73  
OFFICIAL RECORD 831, PAGE 576  
SEMINOLE SHORES SUBDIVISION NO. 2  
PLAT CABINET A, SLIDE 253  
VIRGINIA MILITARY SURVEY 12276  
STOKES TOWNSHIP  
LOGAN COUNTY, OHIO

SURVEYED BY:

*William K. Bruce*  
WILLIAM K. BRUCE  
PROFESSIONAL SURVEYOR 7437  
MAY 19, 2014



ORIGINAL STAMP IN GREEN

COPYRIGHT 2014 BY:  
LEE SURVEYING & MAPPING CO., INC.  
117 North Madriver Street  
BELLEFONTAINE, OHIO 43311  
(937) 593-7335  
WWW.LSMINC.US

ADW D0514 57390514 L-5739-3  
surveys@lsminc.us



2 WORKING DAYS

**BEFORE YOU DIG**

CALL TOLL FREE 800-362-2764

OHIO UTILITIES PROTECTION SERVICE.

INDEXED ON MAP  
4282 SP