

REFERENCE:
 CHIPPEWA PARK No. 1,
 PLAT BOOK B Vol. 2 Pg. 126-127.

SURVEYED AND PLATTED BY:
 DANIEL E. GILBERT, P.S.
 REG. SUR. No. 5402
 428 N. MADRIVER ST.
 BELLEFONTAINE, OHIO 43311



LOT 189 SURVEY
 CHIPPEWA PARK No. 1
 V.M.S. No. 12276
 STOKES TOWNSHIP
 LOGAN COUNTY, OHIO
 JUNE 27, 1970

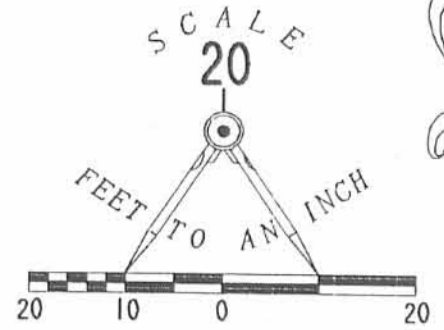
SCALE: 1" = 20' IP

4702

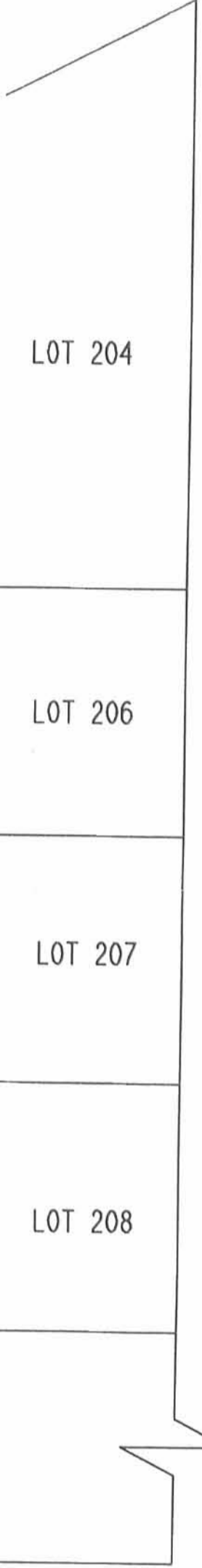
INDEXED ON MAP

REC'D 5-3-99 smj

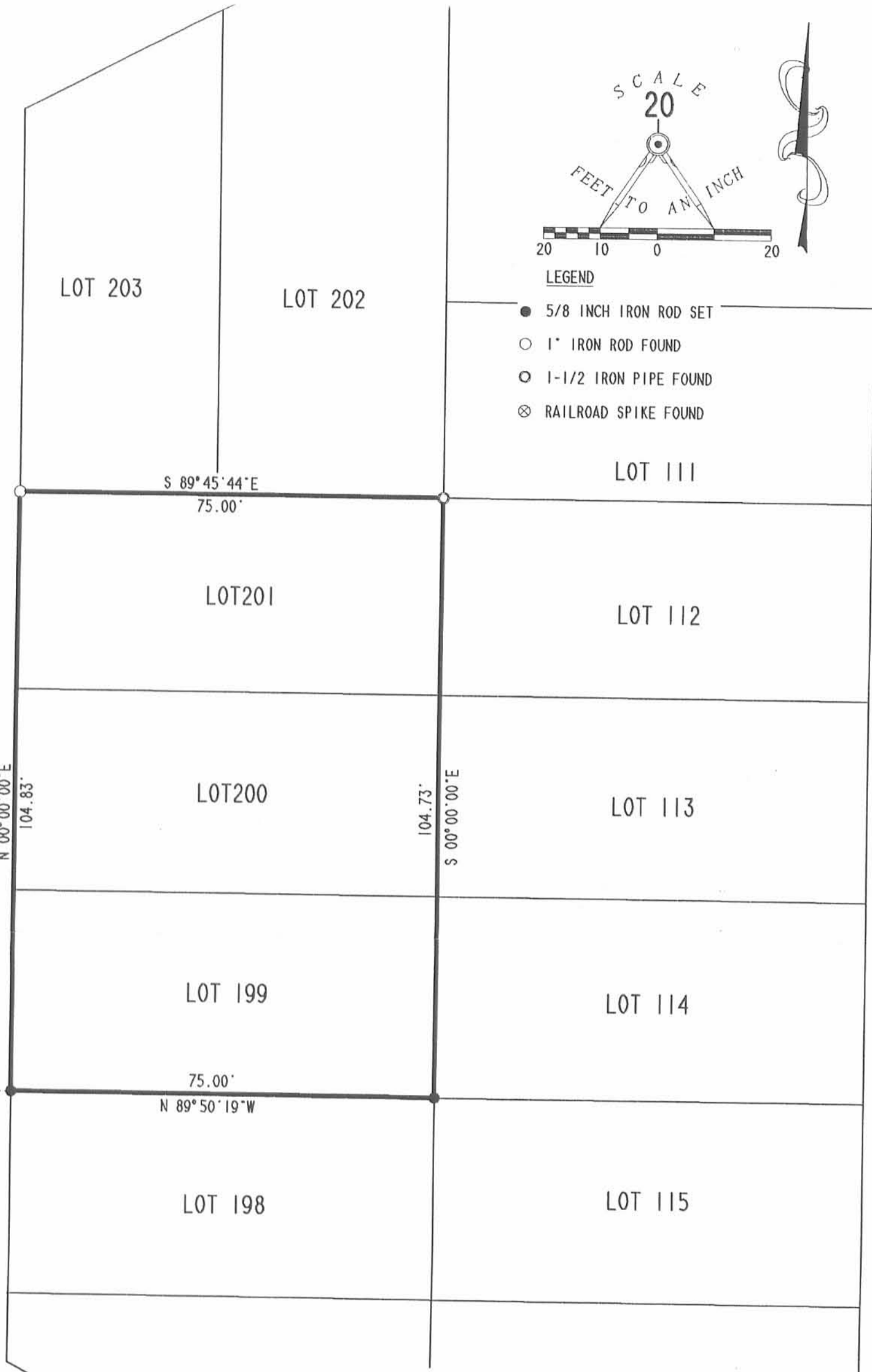
235



- LEGEND
- 5/8 INCH IRON ROD SET
 - 1" IRON ROD FOUND
 - ⊙ 1-1/2 IRON PIPE FOUND
 - ⊗ RAILROAD SPIKE FOUND



POCAHONTAS PATH (35')



646.42' N 00° 00' 00" E (BASIS FOR BEARINGS)

EAGLE PATH (35')

RETRACEMENT SURVEY OF
 LOTS 199, 200 AND 201 OF
 CHIPPEWA PARK ALLOTMENT NO. 1
 PLAT CABINET A, SLIDE 221
 VIRGINIA MILITARY SURVEY 12276
 STOKES TOWNSHIP
 LOGAN COUNTY, OHIO



ORIGINAL STAMP IN GREEN

SURVEYED BY:

Jeffrey J. Lee
 JEFFREY J. LEE
 PROFESSIONAL SURVEYOR 6359
 APRIL 28, 1999

COPYRIGHT 1999 BY:
 LEE SURVEYING & MAPPING CO., INC.
 117 North Madriver Street
 BELLEFONTAINE, OHIO 43311
 (937) 593-7335

D 344 POCOHON

L-2731-3

2 WORKING DAYS
BEFORE YOU DIG
 CALL TOLL FREE **800-362-2764**
 OHIO UTILITIES PROTECTION SERVICE.

4702 2P