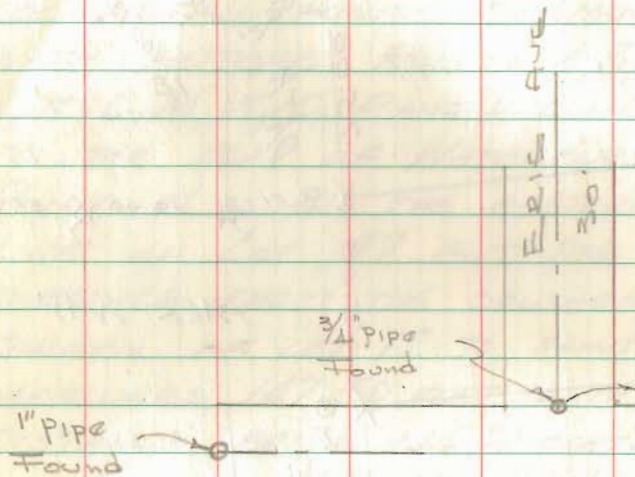


# MIDWAY STREETS

STAKING R/W OF FRANKLIN,  
MADISON & LOGAN STS. SOUTH OF  
MAIN FOR STOKES TWP. TRUSTEES.



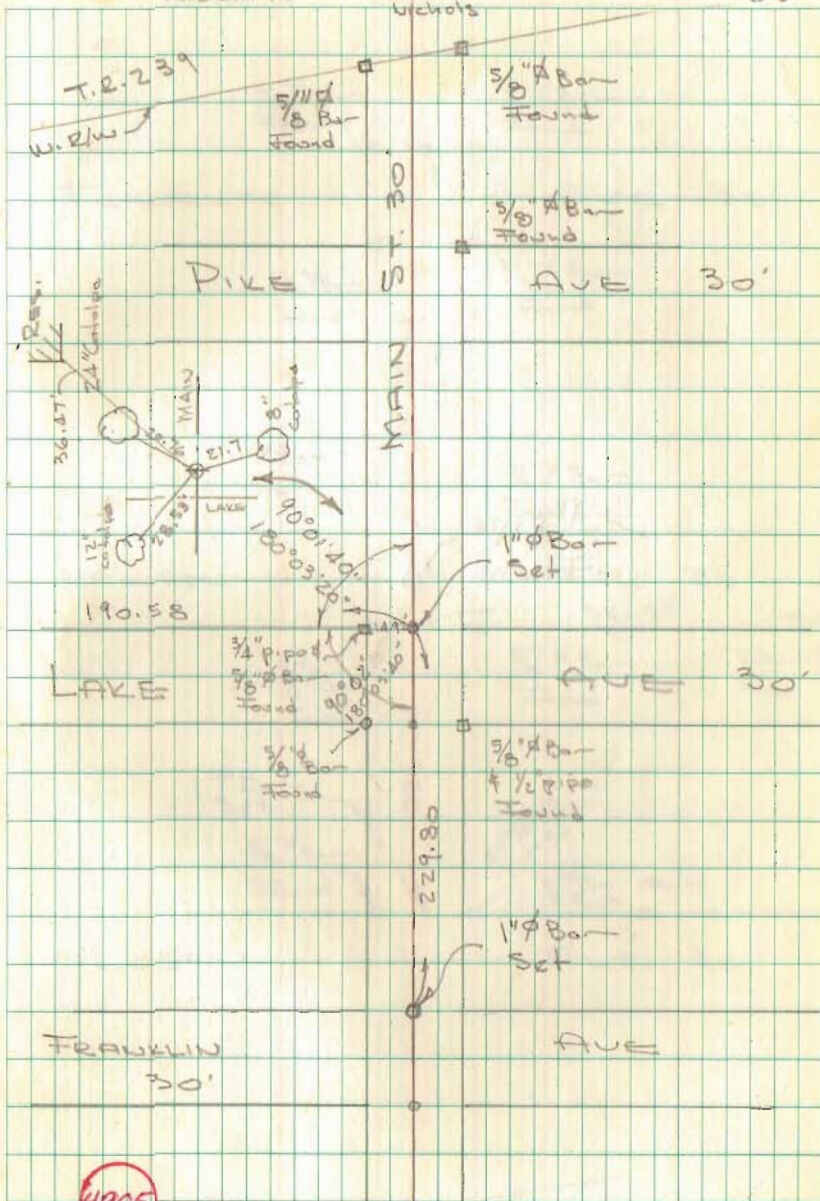
SEE SANITARY ENG. F.B. 38, PGS. 54 & 55  
FOR LOCATION OF ORIGINAL PINS ON  
E OF STREETS.

Dodson  
Geestin  
Rickotte

11/12/70  
Dodson  
Geestin  
Wickrofs

11/10/70  
50'

57



4905

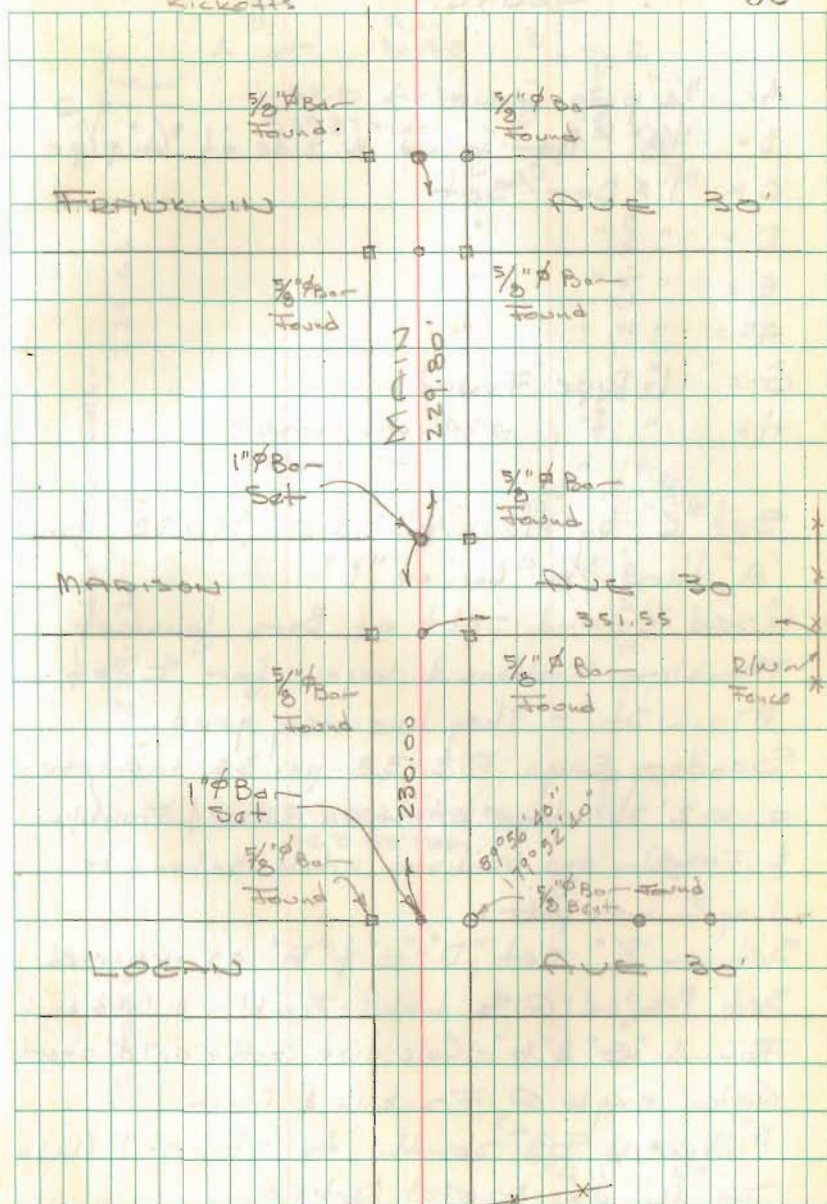
MIOWAY STREETS  
CONT'D.

1" pipe  
found

Dodson  
Gesslin  
Ricketts

11/10/70

58



Fence x x  
Dig for pin  
No Luck

MIDWAY STREETS  
CONT'D.

- A =  $\frac{3}{4}$ " pipe found
- B =  $\frac{5}{8}$ " Bar - found w. side of  $\frac{3}{4}$ " pipe
- C = 1" Bar - Set
- D = " " "
- E = " " "
- F = " " "
- G = 1" Pipe Found
- H = " " "

Set "C" by meas. plat dist. (190.58) from "A" thru  $\frac{5}{8}$ " Bar at "B"

Used "C" and split of Bars found at Franklin - Madison & Logan for  $\frac{1}{2}$  of Main St. - They line very good.

Sanitary Engrs. F. B. 38 pg. 55 indicates a 0.2' shortage between Lake & Franklin & Franklin and Madison while Madison to Logan was plat.

Set on "C" set "D" - "E" & "F" as indicated  
Set P-K nail @ E Lake - Franklin & Madison  
Found "G" & "H" - Calc dist G-H = 0.74' short  
Calc. angle @ Franklin & Main  
Projected E's south to stake R/W's  
south of Main St.

