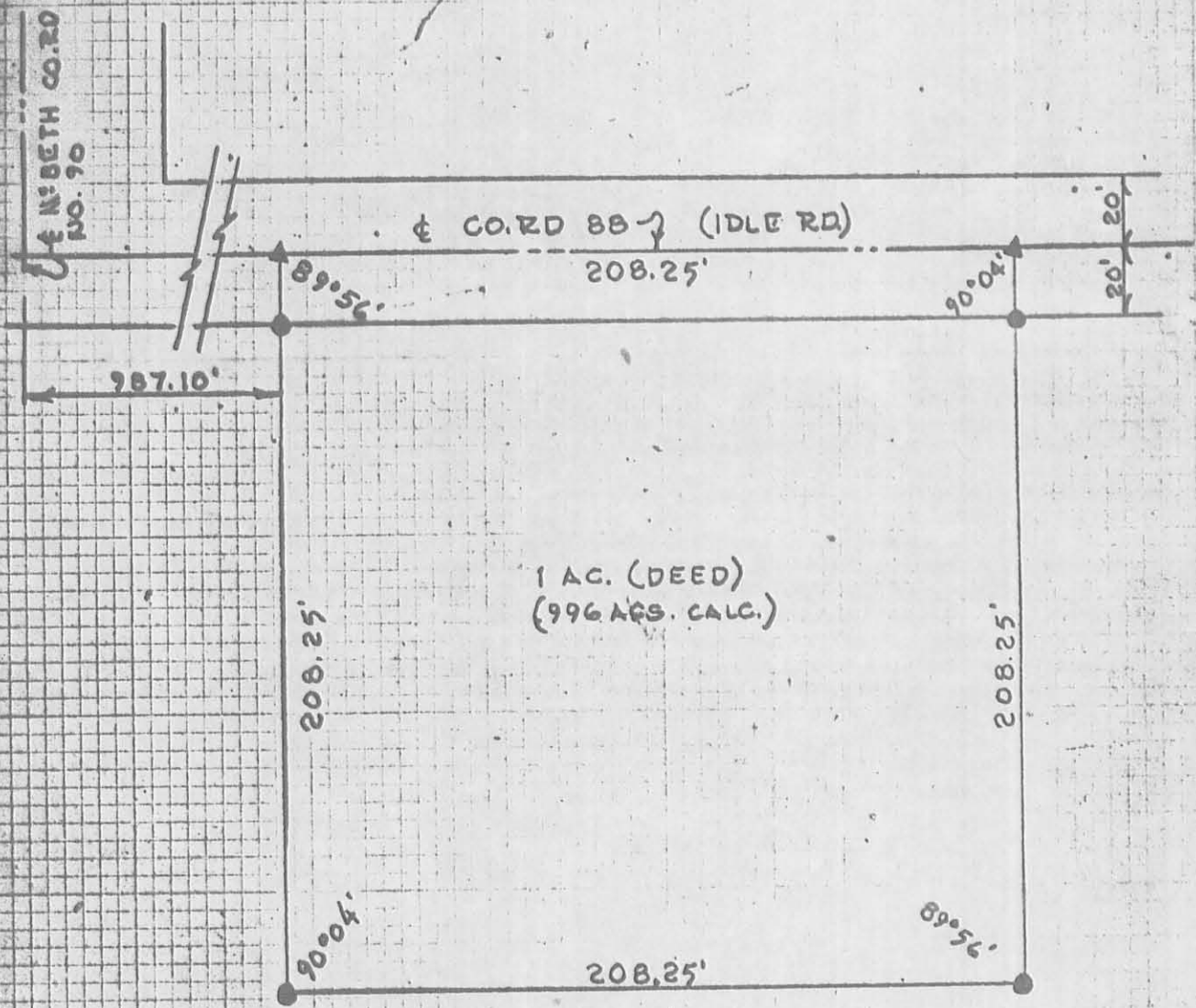


A SURVEY OF .996 ACRES OF LAND IN THE EAST 10 ACRES OF THE NW⁴NW⁴ OF SECTION 21, T6S-R8E, STOKES TOWNSHIP, LOGAN COUNTY, OHIO.



1 AC. (DEED)
 (.996 ACS. CALC.)



SCALE: 1" = 50'
 ▲ R.R. SPIKES
 ● IRON PINS

Clay Flinn
 CLAY FLINN
 REGISTERED SURVEYOR
 NO. 5042

IP
 (5196)

INDEXED ON...