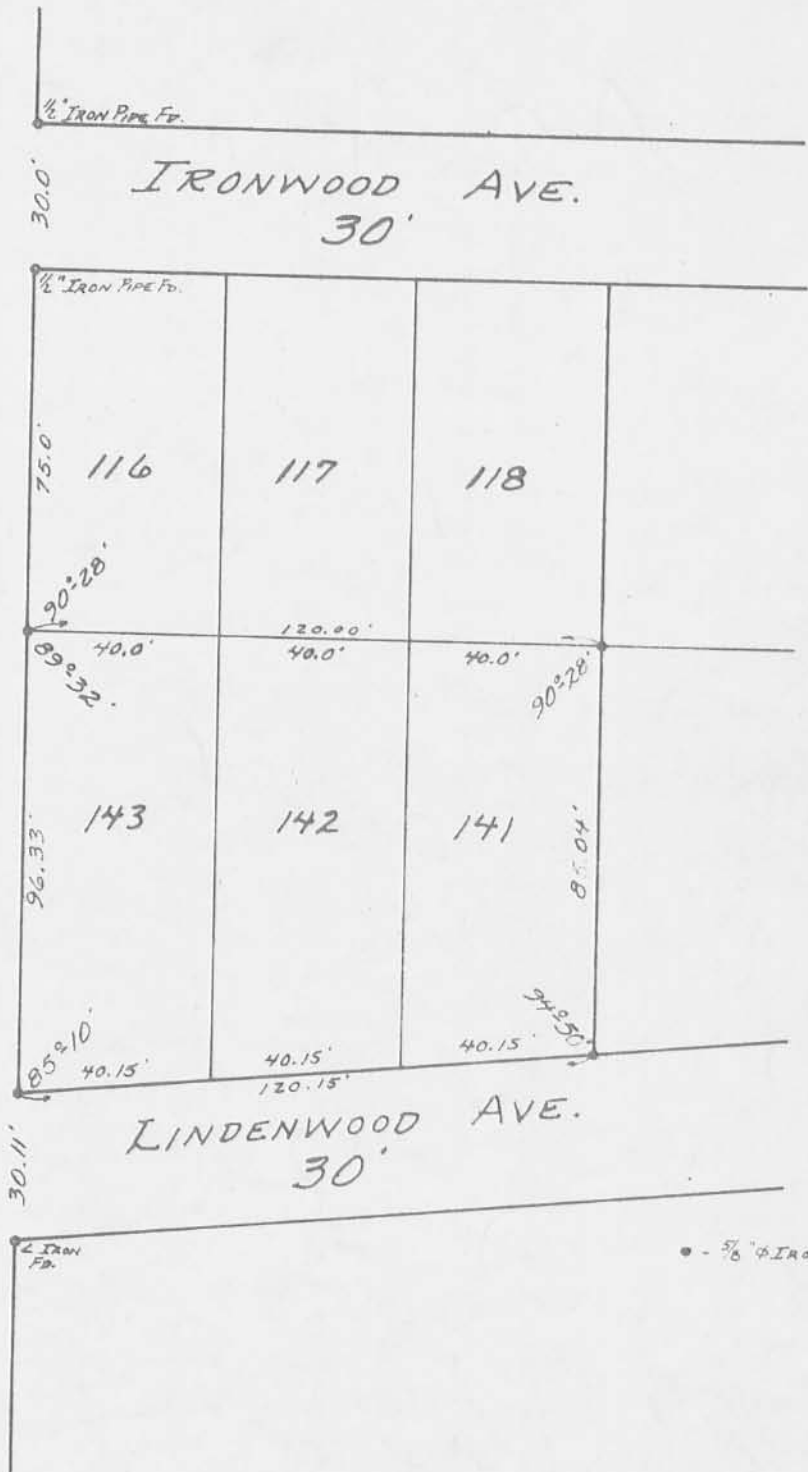




ASH AVE. - 30'



• - 5/8" IRON BARS SET.

5440 1P

INDEXED ON MAP

SURVEYED AND PLATED BY:
 DANIEL E. GILBERT, P.S.
 REG. SUR. NO. 5402
 1041 N. MAIN ST.
 BELLEFONTAINE, OHIO 43311



LOTS 141, 142, 143
 WISE ISLAND VIEW
 STOKES TOWNSHIP
 LOGAN COUNTY, OHIO
 JULY 8, 1972

SCALE: 1" = 20'

REC'D 9-13-00 SWM dk ✓

Lee Surveying and Mapping Co., Inc.

Land Surveys • Topography • Subdivisions • Construction Layout

117 N. Madriver St.
Bellefontaine OH 43311



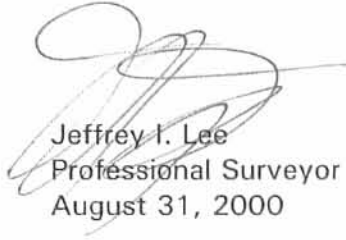
Phone: (937) 593-7335
Fax: (937) 593-7444

BODIE PART OF LOT 124

Lying in Virginia Military Survey 12276, Stokes Township, Logan County, Ohio.

Being 20 feet off the entire west side of Lot 124 of Wise Allotment of Island View as recorded in Plat Cabinet A, Slide 193 of the Logan County Records of Plats.

Description prepared by:

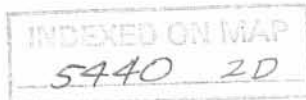


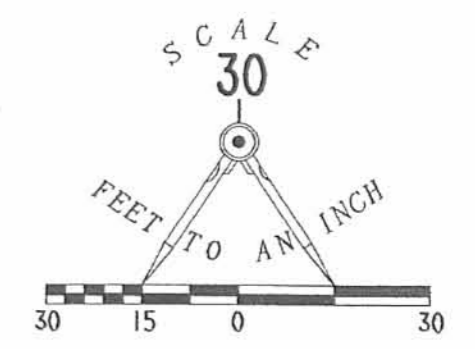
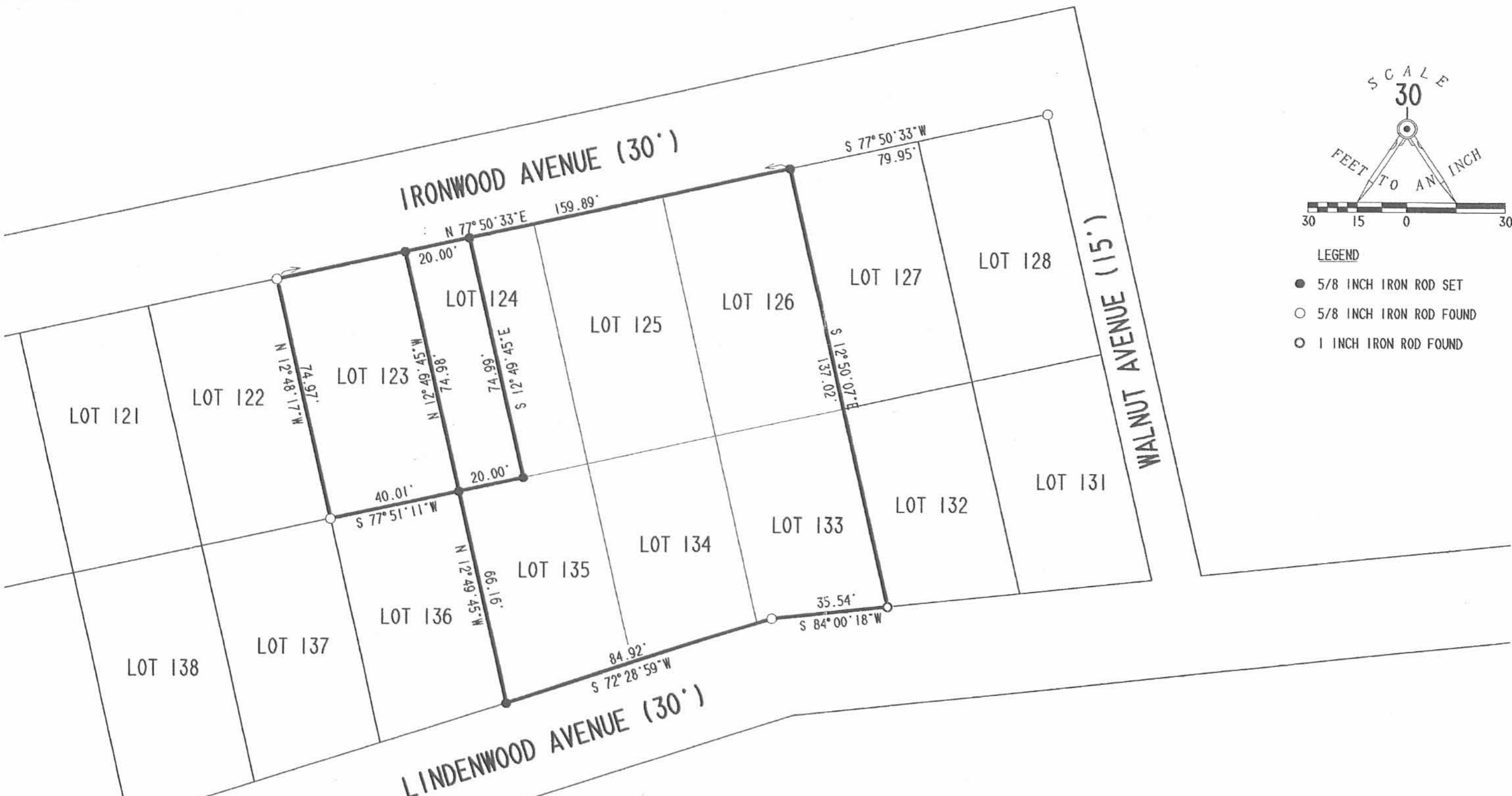
Jeffrey I. Lee
Professional Surveyor 6359
August 31, 2000



ORIGINAL STAMP IN GREEN

L-3014





- LEGEND
- 5/8 INCH IRON ROD SET
 - 5/8 INCH IRON ROD FOUND
 - 1 INCH IRON ROD FOUND

RETRACEMENT SURVEY OF
 LOTS 123. 124. 125. 126. 133. 134 AND 135
 AND SURVEY OF 20 FEET OFF THE WEST END OF LOT 124
 OF WISE ALLOTMENT OF ISLAND VIEW
 PLAT CABINET A. SLIDE 193
 VIRGINIA MILITARY SURVEY 12276
 STOKES TOWNSHIP
 LOGAN COUNTY, OHIO

2 WORKING DAYS
BEFORE YOU DIG
 CALL TOLL FREE **800-362-2764**
 OHIO UTILITIES PROTECTION SERVICE.

INDEXED ON MAP
 5440 2P



SURVEYED BY:
 JEFFREY I. LEE
 PROFESSIONAL SURVEYOR 6359
 AUGUST 31, 2000

COPYRIGHT 2000 BY:
LEE SURVEYING & MAPPING CO.,
 117 North Madriver Street
 BELLEFONTAINE, OHIO 43311
 (937) 593-7335

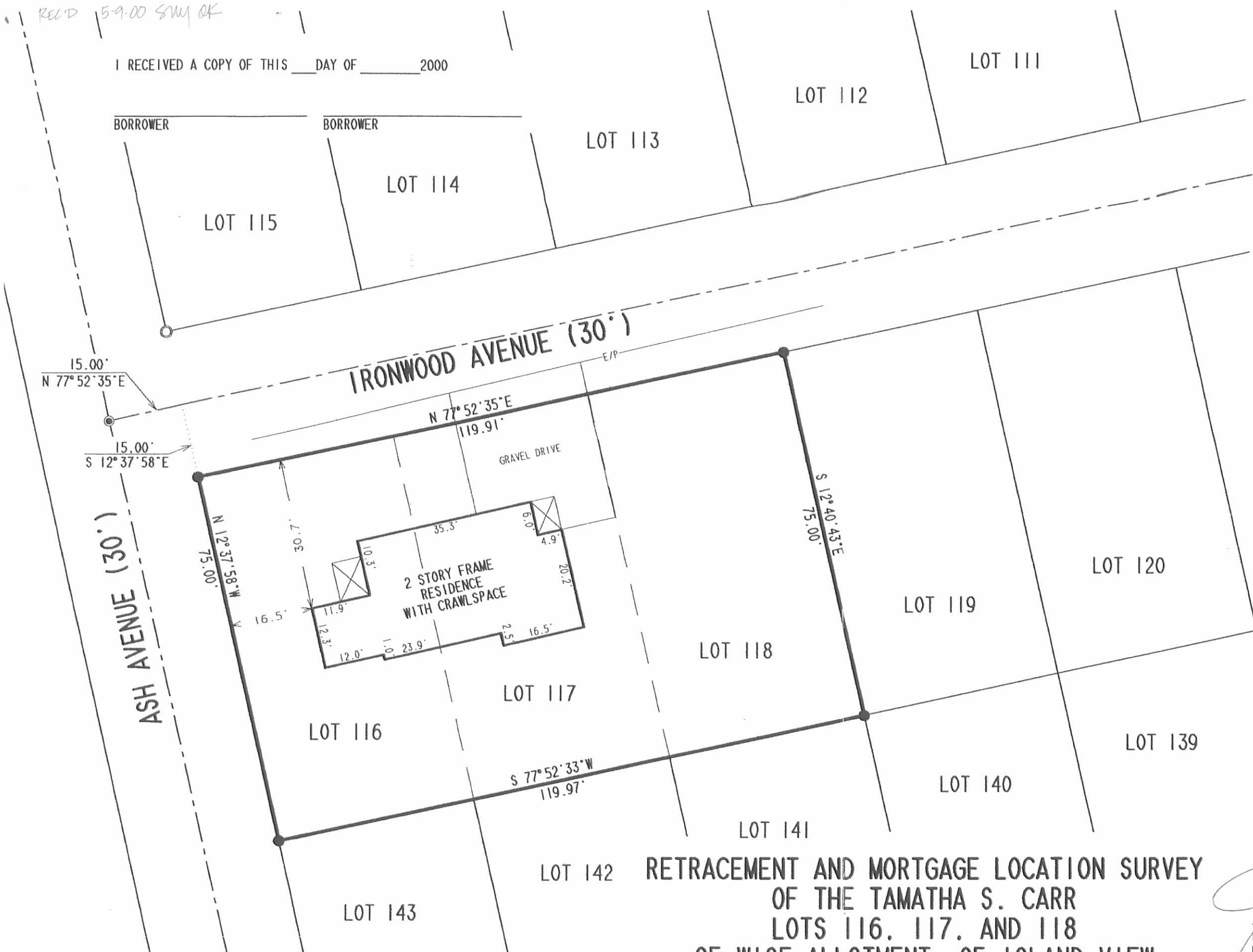
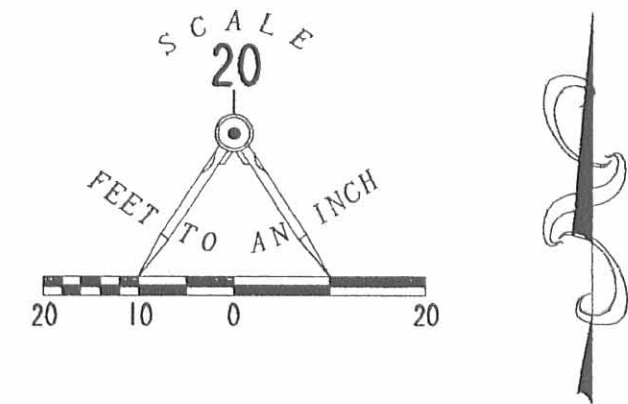
ORIGINAL STAMP IN GREEN

D 386 GBODIE

L-30

REC'D 5-9-00 SWM OK

I RECEIVED A COPY OF THIS DAY OF 2000



- LEGEND
- 5/8 INCH IRON ROD SET
 - ⊙ MAG NAIL SET
 - 5/8 INCH IRON ROD FOUND
 - ⊙ 3/4 INCH IRON PIPE FOUND



ORIGINAL STAMP IN GREEN

I HEREBY STATE TO CITIZENS FEDERAL SAVINGS AND LOAN ASSOC. AND TO THAT ON MAY 3, 2000, GEESLIN MORTGAGE SURVEY CO. MADE AN ACCURATE SURVEY OF THE PREMISES SHOWN HEREON AND THAT THERE ARE NO EASEMENTS OR ENCROACHMENTS VISIBLE ON THE GROUND OTHER THAN THOSE SHOWN HEREON. THIS IS A MORTGAGE LOCATION SURVEY PREPARED IN ACCORDANCE WITH CHAPTER 4733-38 OF THE ADMINISTRATIVE CODE, AND A BOUNDARY SURVEY PURSUANT TO CHAPTER 4733-37 OF SAID CODE.

Jeffrey I. Lee
JEFFREY I. LEE
PROFESSIONAL SURVEYOR 6359
MAY 3, 2000

5440

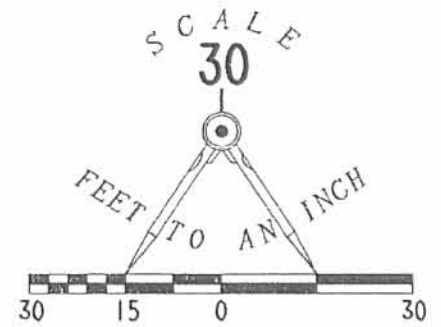
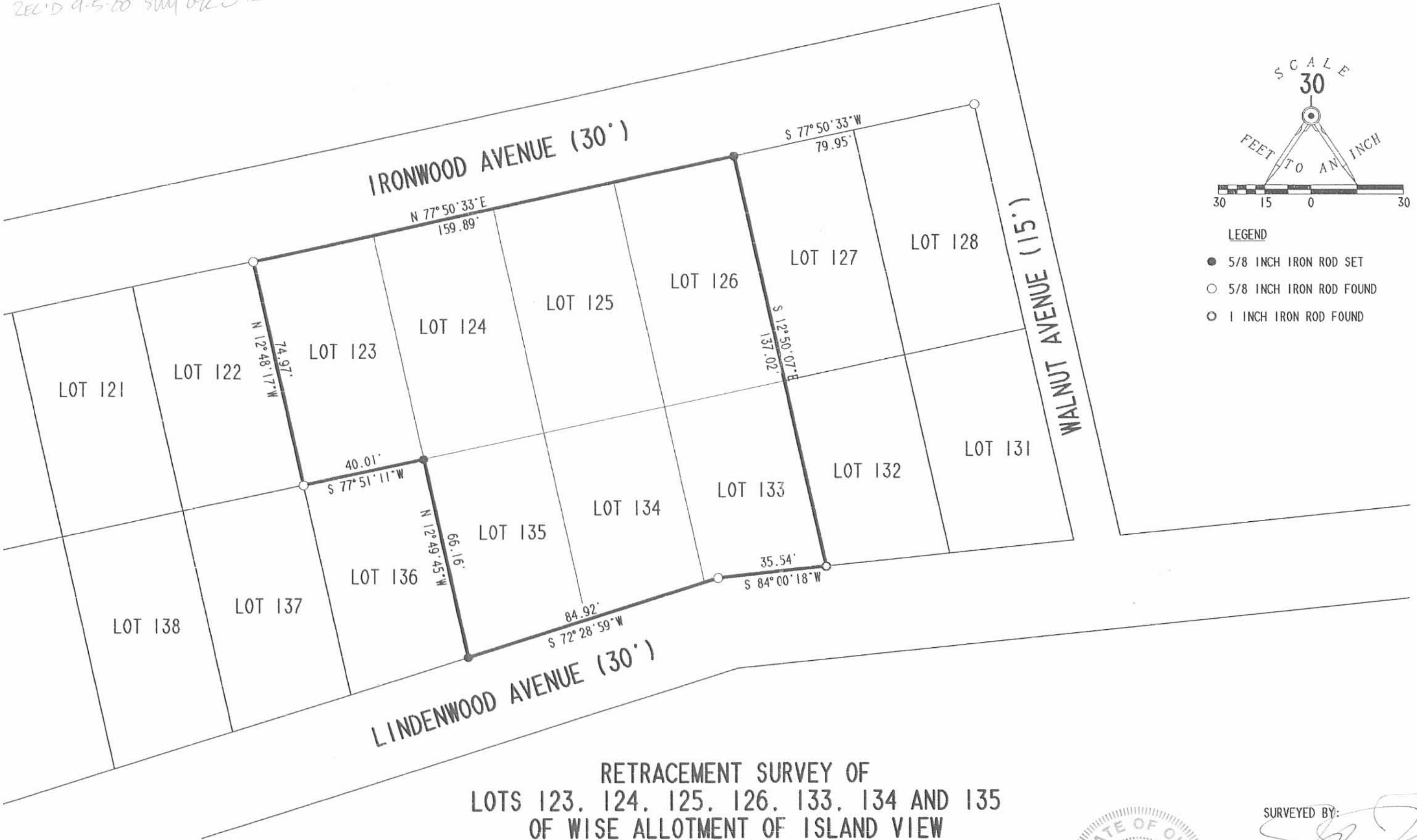
RETRACEMENT AND MORTGAGE LOCATION SURVEY
OF THE TAMATHA S. CARR
LOTS 116, 117, AND 118
OF WISE ALLOTMENT OF ISLAND VIEW
PLAT CABINET A, SLIDE 193
STOKES TOWNSHIP
LOGAN COUNTY, OHIO

INDEXED ON MAP
5440 3P

COPYRIGHT 2000 BY:
GEESLIN MORTGAGE SURVEY COMPANY
117 North Madriver Street
BELLEFONTAINE, OHIO 43311
(937) 593-7335
D-373 ENHAUPT MS-00-198-3

2 WORKING DAYS
BEFORE YOU DIG
CALL TOLL FREE **800-362-2764**
OHIO UTILITIES PROTECTION SERVICE.

REC'D 9-5-00 SWM OK




- LEGEND
- 5/8 INCH IRON ROD SET
 - 5/8 INCH IRON ROD FOUND
 - 1 INCH IRON ROD FOUND

RETRACEMENT SURVEY OF
 LOTS 123, 124, 125, 126, 133, 134 AND 135
 OF WISE ALLOTMENT OF ISLAND VIEW
 PLAT CABINET A, SLIDE 193
 VIRGINIA MILITARY SURVEY 12276
 STOKES TOWNSHIP
 LOGAN COUNTY, OHIO



ORIGINAL STAMP IN GREEN

SURVEYED BY:

 JEFFREY I. LEE
 PROFESSIONAL SURVEYOR 6359
 AUGUST 31, 2000

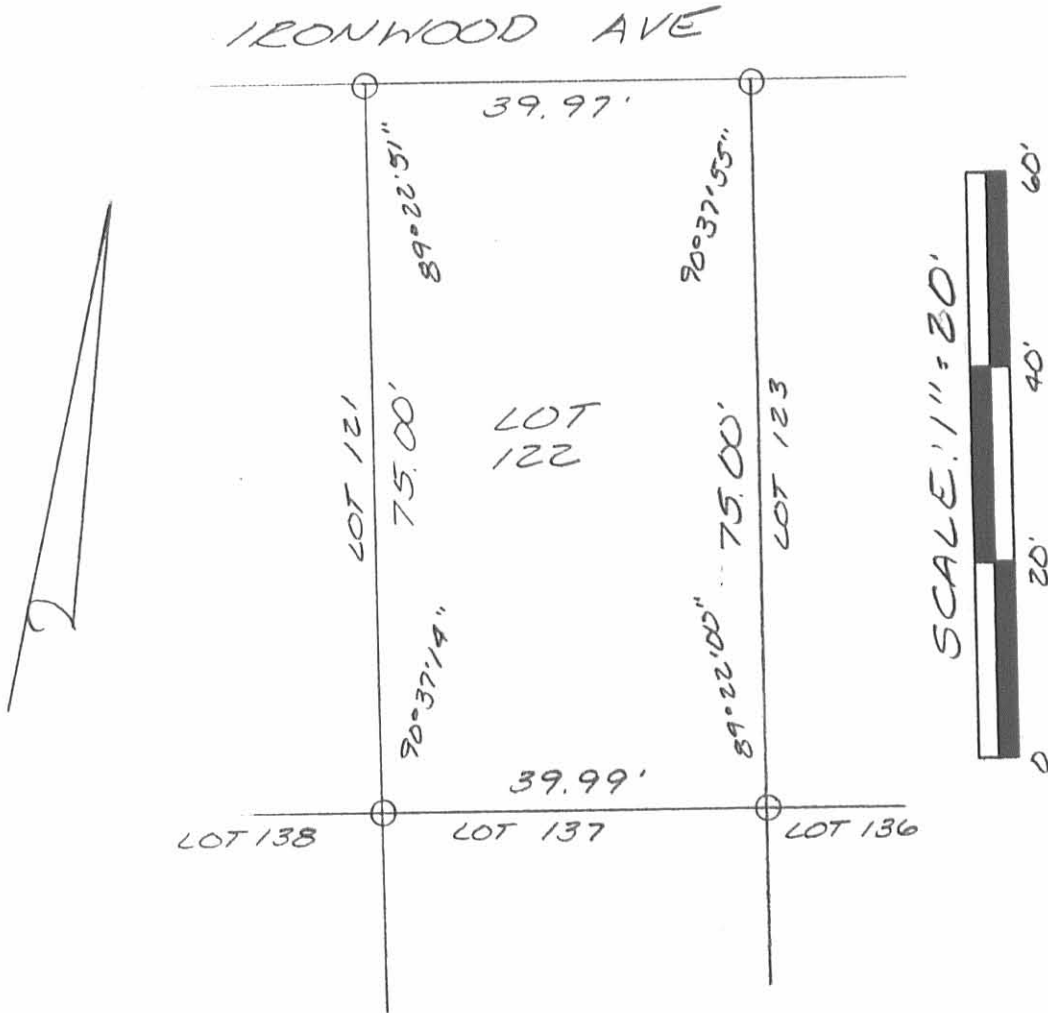
COPYRIGHT 2000 BY:
 LEE SURVEYING & MAPPING CO.,
 117 North Madriver Street
 BELLEFONTAINE, OHIO 43311
 (937) 593-7335

2 WORKING DAYS
BEFORE YOU DIG
 CALL TOLL FREE **800-362-2764**
 OHIO UTILITIES PROTECTION SERVICE.

INDEXED ON MAP
 5440 4P

REC'D 6-6-97 BMY

LEGEND:
○ = 5/8 INCH IRON
BAR SET



SURVEY OF LOT 122 OF WISE
ALLOTMENT IN STOKES TOWN-
SHIP, LOGAN COUNTY, OHIO
FOR RALPH HICKEY
JUNE 5, 1997



Leslie H. Geeslin
LESLIE H. GEESLIN
RUSHSVLVANIA, O
(937) 468-2793

INDEXED ON MAP
5440 5P