

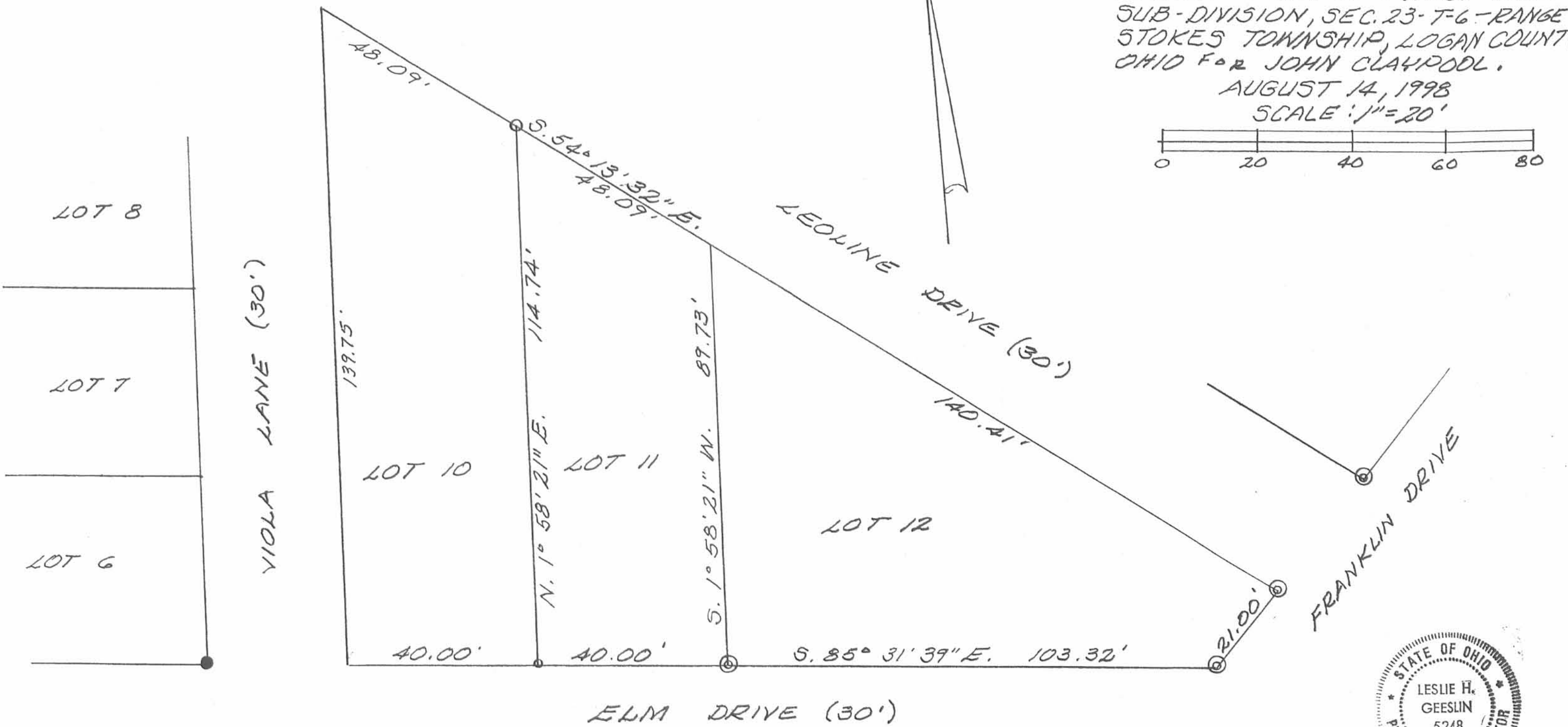
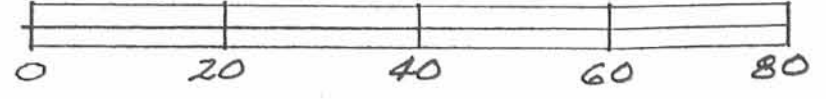
REC'D 8-17-98 SWM OK

LEGEND:
 ○ = 5/8" IRON BAR SET N. 56° 46' 10" W. 2.15' FROM CONCRETE MONUMENT FD.
 ○ = MAGNETIC NAIL SET OVER CONC. MON.
 ⊙ = CONCRETE MONUMENT FOUND
 ● = 5/8" IRON BAR FOUND.

SURVEY OF LOT 11 OF WEST SIDE SUB-DIVISION, SEC. 23-T-6-RANGE 2 STOKES TOWNSHIP, LOGAN COUNTY, OHIO FOR JOHN CLAYPOOL.

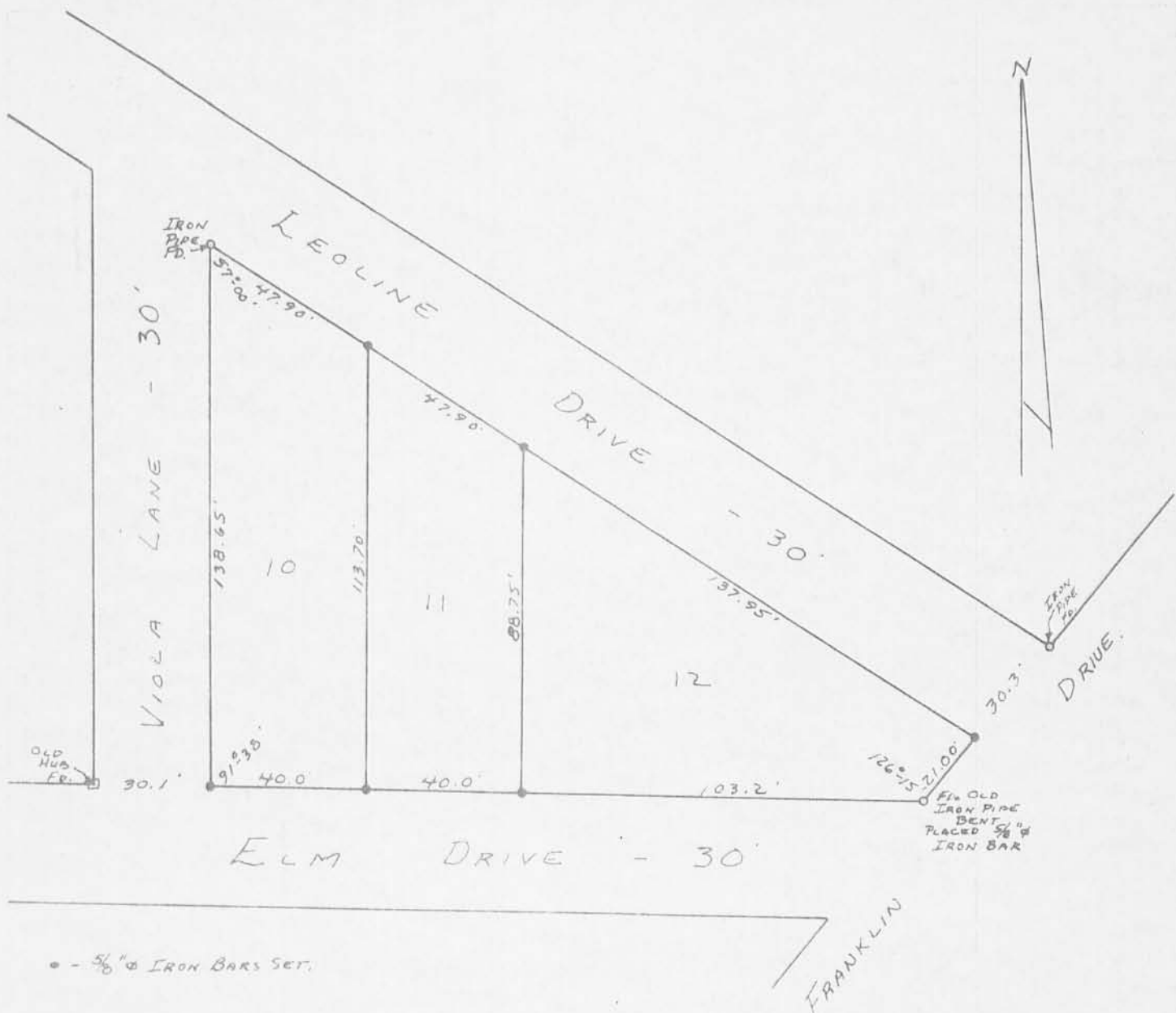
AUGUST 14, 1998

SCALE: 1" = 20'



Leslie H. Geeslin
 LESLIE H. GEESLIN
 RUSHsylvania, OHIO
 PH 937-468-2793

INDEXED ON MAP
 5452 1P



• - 5/8" IRON BARS SET.

REFERENCE:
 WEST SIDE SUBD. NO. 3
 PLAT BOOK 3 VOL. C PAGE 65.

5452 2P

INDEXED ON MAP
 SURVEY OF LOTS 10, 11, 12
 WEST SIDE SUBDIVISION NO. 3
 SECTION 23 T. 6 S. R. 8 E.
 STOKES TOWNSHIP
 LOGAN COUNTY, OHIO
 JUNE 2, 1973

SURVEYED AND PLATTED BY:
 DANIEL E. GILBERT, P.S.
 REG. SUR. NO. 5402
 1042 N. MAIN ST.
 BELLEFONTAINE, OHIO 43311

SCALE: 1" = 40'

