

SURVEY OF SOUTH 30' OF LOT 22,  
 NORTH 10' OF LOT 23, AND LOT 46-249  
 O'DELLS ALLOTMENT, STOKES TWP.,  
 LOGAN COUNTY, OHIO.  
 FOR NORMAN L. BREWER  
 APRIL 11, 1990

REF. O.R. VOL 67 PAGE 681

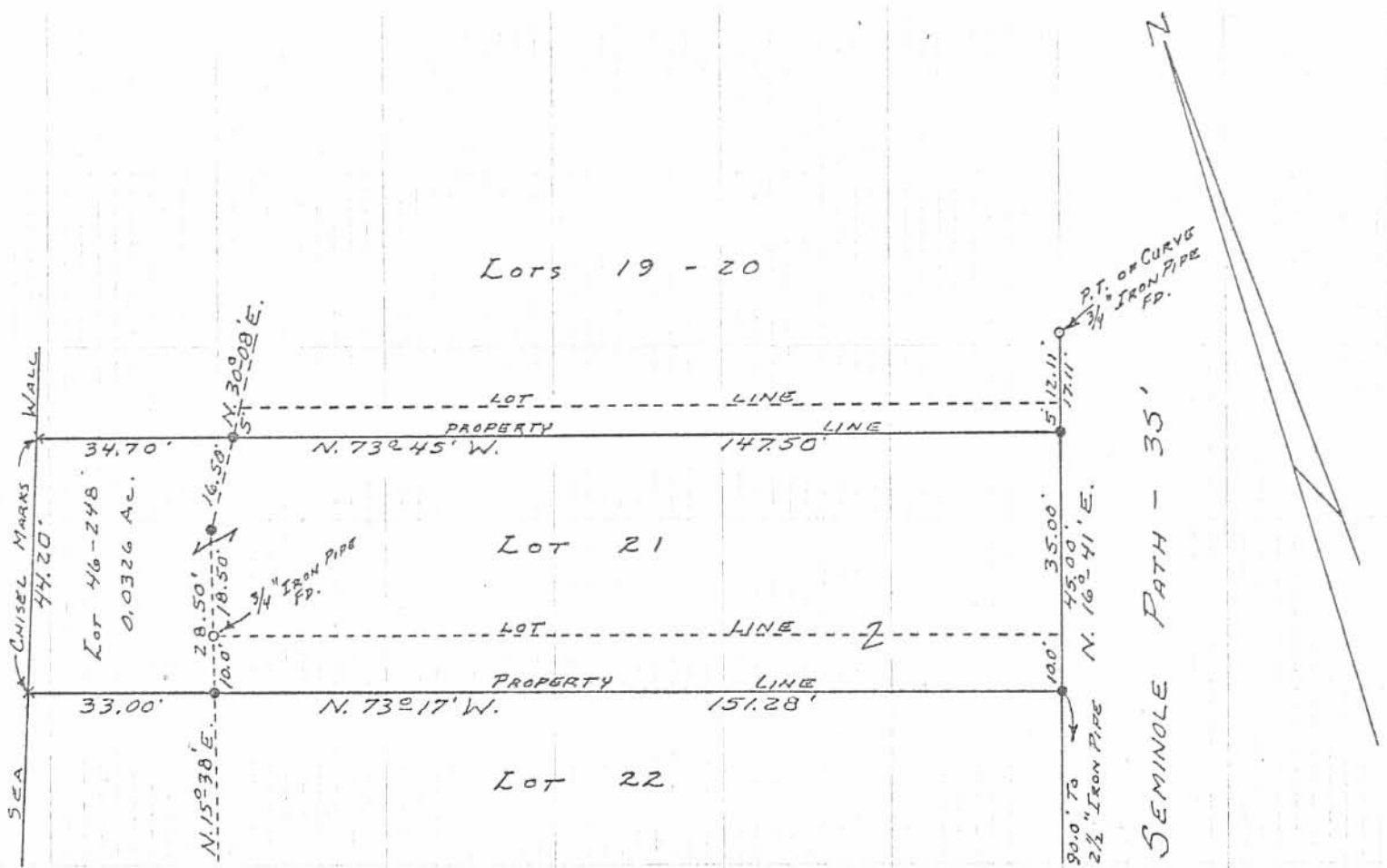


*Leslie H. Geeslin*  
 LESLIE H. GEESLIN  
 RUSHSVLVANIA, OHIO

D.L.G.

INDEXED ON MAP  
 5662 1P

CHANNEL



REFERENCES:

O'DELLS ALLOTMENT  
 PLAT BOOK C, PAGE 64  
 ENG. FILE J-96  
 ENG. FILE G-71 P. 4

5662 ZP

INDEXED ON MAP

● - 5/8" IRON BARS SET.

HOWARD W. SHAW SURVEY  
 PART OF LOTS 21-22 AND  
 LOT 46-248  
 O'DELLS ALLOTMENT  
 STOKES TOWNSHIP  
 LOGAN COUNTY, OHIO  
 DECEMBER 14, 1974

SCALE: 1" = 30'

SURVEYED AND PLATTED BY:  
 DANIEL E. GILBERT, P.S.  
 REG. SUR. NO. 5402  
 1041 N. MAIN ST.  
 BELLEFONTAINE, OHIO 43311

ALBERT E. GILBERT  
 1041 N. MAIN ST.  
 BELLEFONTAINE, OHIO 43311