

YOUNG SURVEY

AUGUST, 1974

The following described real estate situated in Virginia Military Survey No. 12277, Stokes Township, Logan County, Ohio and being more particularly described as follows:

Beginning at an iron bar in the centerline of S.R.235 at the northwest corner of Albert Reed's 1.77 acre tract; thence with the west line of said Reed and Robert Schmitt's 9.69 acre tract S.9°29'E. 529.0 feet to an iron pipe in the north line of King's Allotment No. 9; thence with said north line S.82°10'W. 802.0 feet to an iron bar; thence N.22°11'E. 610.6 feet to an iron bar in the centerline of S.R.235; passing iron bars at 305.3 feet and 576.0 feet; thence with said centerline N.82°10'E. 481.3 feet to the place of beginning.

Containing 7.79 acres more or less.

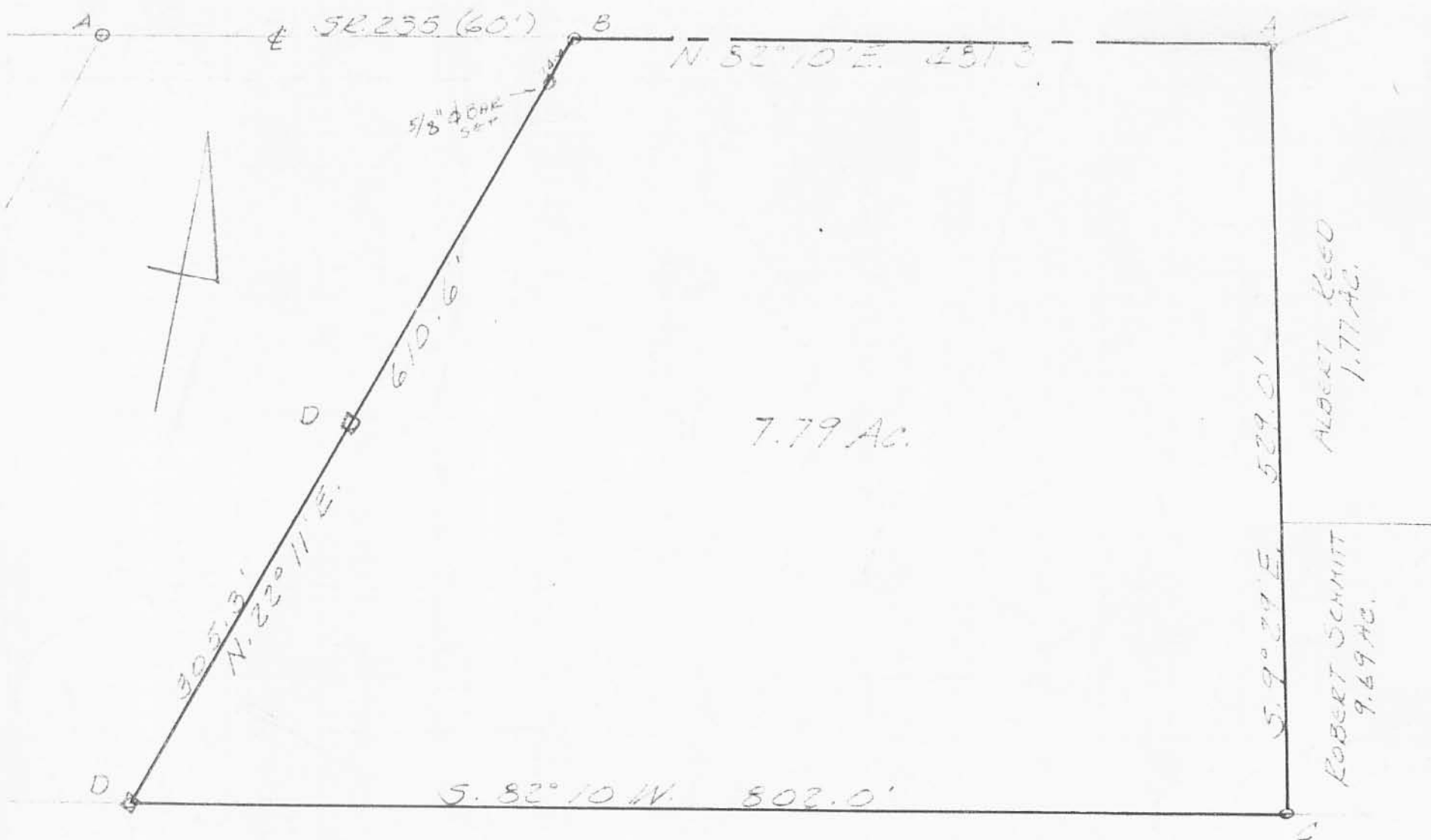
The above described 7.79 acre being on the east side of Chester N. Young's 11.79 acre tract.

I hereby certify that the above is a true and accurate description of a survey made by me.

Leslie H. Geeslin
Reg. Surveyor 5248
Rushsylvania, Ohio 43327

5623 1D

INDEXED ON MAP



KING'S LANDING ALLOTMENT NO. 9

- A = R.R. SPIKE FD
- B = HARROW TOOTH SET
- C = 3/4" PIPE FD.
- D = 3/4" # BAR SET

YOUNG SURVEY
 V.M.S. 12277
 STOKES TOWNSHIP
 LOGAN COUNTY, OHIO
 AUGUST, 1974,
 SCALE 1"=100'

5673 1P

INDEXED ON MAP

LESLIE H. GEESLIN
 REG. SURVEYOR 5248
 PENNSYLVANIA, OHIO

Rec 8-17-99 OKJLH



Lee Surveying and Mapping Co., Inc.



Land Surveys • Topography • Subdivisions • Construction Layout

117 N. Madriver Street
Bellefontaine OH 43311

Phone: (937) 593-7335
Fax: (937) 593-7444

TRACT A 1.788 ACRES

Lying in Virginia Military Survey 12277, Stokes Township, Logan County, Ohio.

Being out of the Vicki A. Fulkerson 7.79 acre tract as deeded and described in Official Record 306, Page 290 of the Logan County Records of Deeds and being more particularly described as follows:

Beginning at a railroad spike found at the intersection of center-lines of State Route 235 (60 feet wide) and Township Road 293.

THENCE, with the center-line of State Route 235, S 87°-06'-13" E, a distance of 329.53 feet to a harrow tooth found at the TRUE POINT OF BEGINNING.

THENCE, with the center-line of State Route 235, S 87°-02'-49" E, a distance of 206.18 feet to a MAG nail set.

THENCE, S 9°-55'-09" W, a distance of 278.24 feet to a 5/8 inch iron rod set, passing a 5/8 inch iron rod set at 30.22 feet.

THENCE, S 32°-08'-48" W, a distance of 24.49 feet to a 5/8 inch iron rod set.

THENCE, N 83°-22'-34" W, a distance of 320.27 feet to a 5/8 inch iron rod set.

THENCE, with the east lines of the Donald L. Donnelly 0.667 acre tract, (O.R. 200, Pg. 305) and the Chester N. Young 2.00 acre tract (Vol. 389, Pg. 385), N 32°-49'-23" E, a distance of 319.50 feet to the point of beginning, passing a 5/8 inch iron rod found at 285.01 feet.

Containing 1.788 acres, of which 0.146 acre is in the highway right-of-way.

The basis for bearings is the center-line of State Route 235 at Township Road 293, being S 87°-06'-13" E, and all other bearings are from angles and distances measured in a field survey by Lee Surveying and Mapping Co., Inc. on August 16, 1999.



ORIGINAL STAMP IN GREEN

Description prepared by:

Jeffrey I. Lee
Professional Surveyor 6359
August 17, 1999

L-2787



Rec'd 8-17-99 OK JCL



Lee Surveying and Mapping Co., Inc.



Land Surveys • Topography • Subdivisions • Construction Layout

117 N. Madriver Street
Bellefontaine OH 43311

Phone: (937) 593-7335
Fax: (937) 593-7444

TRACT B 2.760 ACRES

Lying in Virginia Military Survey 12277, Stokes Township, Logan County, Ohio.

Being out of the Vicki A. Fulkerson 7.79 acre tract as deeded and described in Official Record 306, Page 290 of the Logan County Records of Deeds and being more particularly described as follows:

Beginning at a railroad spike found at the intersection of center-lines of State Route 235 (60 feet wide) and Township Road 293.

THENCE, with the center-line of State Route 235, S 87°-06'-13" E, a distance of 329.53 feet to a harrow tooth found.

THENCE, with the center-line of State Route 235, S 87°-02'-49" E, a distance of 206.18 feet to a MAG nail set at the TRUE POINT OF BEGINNING.

THENCE, with the center-line of State Route 235, S 87°-02'-49" E, a distance of 60.45 feet to a MAG nail set.

THENCE, S 9°-55'-09" W, a distance of 266.26 feet to a 5/8 inch iron rod set, passing a 5/8 inch iron rod set at 30.22 feet.

THENCE, S 34°-15'-05" W, a distance of 82.80 feet to a 5/8 inch iron rod set.

THENCE, S 4°-41'-00" W, a distance of 193.64 feet to a 5/8 inch iron rod set.

THENCE, with the north line of the Kings Landing Allotment Number 9 (Plat Cabinet A, Slide 511), N 87°-07'-13" W, a distance of 489.42 feet to a 3/4 inch square iron bar found.

THENCE, with the east lines of the Carol Tanner 0.667 acre tract (O.R. 275, Pg. 393), the Bobby Clymer 0.666 acre tract (O.R. 269, Pg. 273), and the Donald L. Donnelly 0.667 acre tract (O.R. 200, Pg. 305), N 32°-49'-23" E, a distance of 290.79 feet to a 5/8 inch iron rod set.

THENCE, S 83°-22'-34" E, a distance of 320.27 feet to a 5/8 inch iron rod set.

THENCE, N 32°-08'-48" E, a distance of 24.49 feet to a 5/8 inch iron rod set.

THENCE, N 9°-55'-09" E, a distance of 278.24 feet to the point of beginning, passing a 5/8 inch iron rod set at 248.02 feet.

Containing 2.760 acres, of which 0.042 acre is in the highway right-of-way.

The basis for bearings is the center-line of State Route 235 at Township Road 293, being S 87°-06'-13" E, and all other bearings are from angles and distances measured in a field survey by Lee Surveying and Mapping Co., Inc. on August 16, 1999.



ORIGINAL STAMP IN GREEN

Description prepared by:

Jeffrey I. Lee
Jeffrey I. Lee
Professional Surveyor 6359
August 17, 1999

L-2787

INDEXED ON MAP
5673 20-2

Rec'd 8-17-99 OKgch



Lee Surveying and Mapping Co., Inc.



Land Surveys • Topography • Subdivisions • Construction Layout

117 N. Madriver Street
Bellefontaine OH 43311

Phone: (937) 593-7335
Fax: (937) 593-7444

TRACT C 3.232 ACRES

Lying in Virginia Military Survey 12277, Stokes Township, Logan County, Ohio.

Being out of the Vicki A. Fulkerson 7.79 acre tract as deeded and described in Official Record 306, Page 290 of the Logan County Records of Deeds and being more particularly described as follows:

Beginning at a railroad spike found at the intersection of center-lines of State Route 235 (60 feet wide) and Township Road 293.

THENCE, with the center-line of State Route 235, S 87°-06'-13" E, a distance of 329.53 feet to a harrow tooth found.

THENCE, with the center-line of State Route 235, S 87°-02'-49" E, a distance of 266.63 feet to a MAG nail set at the TRUE POINT OF BEGINNING.

THENCE, with the center-line of State Route 235, S 87°-02'-49" E, a distance of 214.68 feet to a MAG nail set.

THENCE, with the west lines of the Frances D. Reed 1.77 acre tract (O.R. 313, Pg. 227, Parcel I), the Frances D. Reed 1.0 acre tract (O.R. 313, Pg. 227, Parcel II), the Wannemacher Construction 9.69 acre tract (O.R. 253, Pg. 711), S 1°-15'-17" W, a distance of 528.42 feet to a 1/2 inch iron pipe found, passing a 5/8 inch iron rod set at 30.01 feet.

THENCE, with the north line of the Kings Landing Allotment Number 9 (Plat Cabinet A, Slide 511), N 87°-07'-13" W, a distance of 311.49 feet to a 5/8 inch iron rod set.

THENCE, N 4°-41'-00" E, a distance of 193.64 feet to a 5/8 inch iron rod set.

THENCE, N 34°-15'-05" E, a distance of 82.80 feet to a 5/8 inch iron rod set.

THENCE, N 9°-55'-09" E, a distance of 266.26 feet to the point of beginning, passing a 5/8 inch iron rod set at 236.04 feet.

Containing 3.232 acres, of which 0.149 acre is in the highway right-of-way.

The basis for bearings is the center-line of State Route 235 at Township Road 293, being S 87°-06'-13" E, and all other bearings are from angles and distances measured in a field survey by Lee Surveying and Mapping Co., Inc. on August 16, 1999.



ORIGINAL STAMP IN GREEN

Description prepared by:

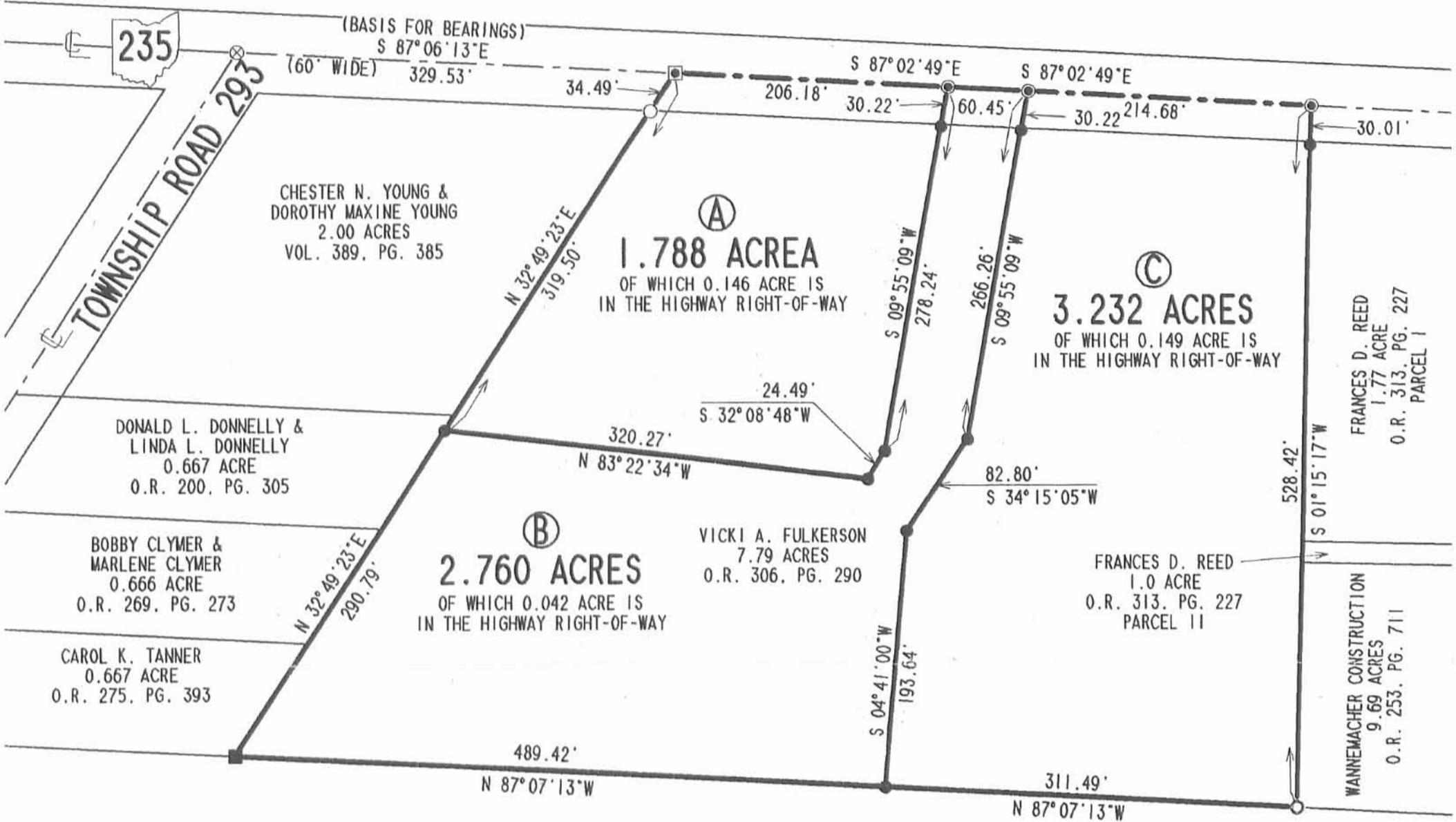
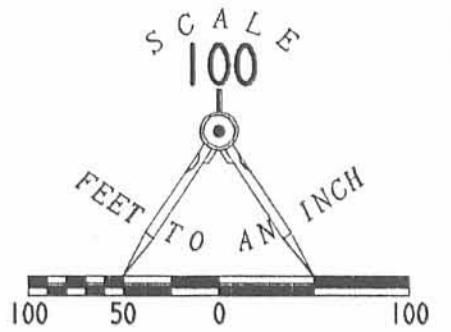
Jeffrey I. Lee
Jeffrey I. Lee
Professional Surveyor 6359
August 17, 1999

L-2787

INDEXED OR MAP
5673 2D-3

LEGEND

- 5/8" IRON ROD FOUND
- 5/8" IRON ROD SET
- 3/4" SQUARE IRON BAR FOUND
- 1/2" IRON PIPE FOUND
- ▣ HARROW TOOTH FOUND
- ⊙ MAG NAIL SET
- ⊗ RAILROAD SPIKE FOUND



KINGS LANDING ALLOTMENT NO. 9
 PLAT CABINET A, SLIDE 511

**SURVEY OF 3 TRACTS
 OUT OF THE
 VICKI A. FULKERSON
 7.79 ACRE TRACT
 OFFICIAL RECORD 306, PAGE 290
 VIRGINIA MILITARY SURVEY 12277
 STOKES TOWNSHIP
 LOGAN COUNTY, OHIO**

SURVEYED BY:

JEFFREY I. LEE
 PROFESSIONAL SURVEYOR 6359
 AUGUST 16, 1999

COPYRIGHT 1999 BY:

LEE SURVEYING & MAPPING CO., INC.
 117 North Madriver Street
 BELLEFONTAINE, OHIO 43311
 (937) 593-7335



ORIGINAL STAMP IN GREEN

INDEXED ON MAP
 5673 2P

2 WORKING DAYS
BEFORE YOU DIG
 CALL TOLL FREE **800-362-2764**
 OHIO UTILITIES PROTECTION SERVICE.

Lee Surveying and Mapping Co., Inc.

Land Surveys • Topography • Subdivisions • Construction Layout

117 N. Madriver St.
Bellefontaine OH 43311



Phone: (937) 593-7335
Fax: (937) 593-7444

NORTH POINT LANDING CONDOMINIUMS 32.00 FEET WIDE INGRESS-EGRESS EASEMENT

Lying in Virginia Military Survey 12277, Stokes Township, Logan County, Ohio.

Being a 32.00 feet wide ingress/egress easement over Fox Investments, Ltd 3.232 acre tract as deeded and described in Official Record 520, Page 30 of the Logan County Records of Deeds and being more particularly described as follows:

Beginning at a railroad spike found at the intersection of center-lines of Ohio Route 235 (60 feet wide) and Township Road 293.

THENCE, with the center-line of Ohio Route 235, S 87°-06'-13" E, a distance of 329.53 feet to a harrow tooth found.

THENCE, with the center-line of Ohio Route 235, S 87°-02'-49" E, a distance of 407.31 feet to a MAG nail set at the TRUE POINT OF BEGINNING.

THENCE, with the center-line of Ohio Route 235, S 87°-02'-49" E, a distance of 32.00 feet to a MAG nail set.

THENCE, S 2°-57'-11" W, a distance of 47.00 feet to a 5/8 inch iron rod set, passing a 5/8 inch iron rod set at 30.00 feet.

THENCE, with a curve to the right having a central angle of 16°-30'-00", a radius of 166.00 feet, an arc length of 47.80 feet and a chord bearing S 11°-12'-11" W, a distance of 47.64 feet to a 5/8 inch iron rod set.

THENCE, S 19°-27'-11" W, a distance of 193.50 feet to a 5/8 inch iron rod set.

THENCE, with a curve to the left having a central angle of 18°-14'-24", a radius of 74.00 feet, an arc length of 23.56 feet and a chord bearing S 10°-19'-59" W, a distance of 23.46 feet to a 5/8 inch iron rod set.

THENCE, N 88°-47'-13" W, a distance of 32.00 feet to a 5/8 inch iron rod set.

THENCE, with a curve to the left having a central angle of 18°-14'-24", a radius of 106.00 feet, an arc length of 33.74 feet and a chord bearing N 10°-19'-59" E, a distance of 33.60 feet to a 5/8 inch iron rod set.

THENCE, N 19°-27'-11" E, a distance of 193.50 feet to a 5/8 inch iron rod set.

THENCE, with a curve to the right having a central angle of 16°-30'-00", a radius of 134.00 feet, an arc length of 38.59 feet and a chord bearing N 11°-12'-11" E, a distance of 38.46 feet to a 5/8 inch iron rod set.

THENCE, N 2°-57'-11" E, a distance of 47.00 feet to the point of beginning, passing a 5/8 inch iron rod set at 17.00 feet.

The basis for bearings is the center-line of Ohio Route 235 at Township Road 293, being S 87°-06'-13" E, and all other bearings are from angles and distances measured in a field survey by Lee Surveying and Mapping Co., Inc. on August 16, 1999 and August 1, 2003.

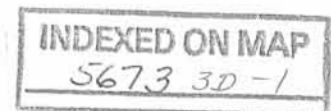


ORIGINAL STAMP IN GREEN

Description prepared by:

A handwritten signature in black ink, appearing to read 'Jeffrey I. Lee'.

Jeffrey I. Lee
Professional Surveyor 6359
August 1, 2003
Revised May 6, 2004



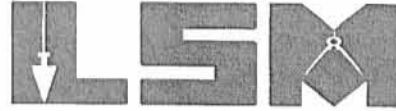
L-2787

Received 3/29/04 OKJUH

Lee Surveying and Mapping Co., Inc.

Land Surveys • Topography • Subdivisions • Construction Layout

117 N. Madriver St.
Bellefontaine OH 43311



Phone: (937) 593-7335
Fax: (937) 593-7444

FOX INVESTMENTS, LTD WATER SUPPLY EASEMENT

Lying in Virginia Military Survey 12277, Stokes Township, Logan County, Ohio.

Being a water supply easement on and through the Fox Investments, Ltd 3.232 acre tract as deeded and described in Official Record 520, Page 30 of the Logan County Records of Deeds and being more particularly described as follows:

Beginning at a railroad spike found on the intersection of center-lines of Ohio Route 235 (60 feet wide) and Township Road 293 (60 feet wide).

THENCE, with the center-line of Ohio Route 235, S 87°-06'-13" E, a distance of 329.53 feet to a harrow tooth found.

THENCE, with the center-line of Ohio Route 235, S 87°-02'-49" E, a distance of 266.64 feet to a MAG nail set.

THENCE, with the east line of the Vicki A. Fay 2.760 acre tract (O.R. 511, Pg. 124, Tract II), the following two courses:

S 9°-55'-09" W, a distance of 266.26 feet to 5/8 inch iron rod set, passing a 5/8 inch iron rod set at 30.22 feet.

S 34°-15'-05" W, a distance of 64.41 feet to a point at the TRUE POINT OF BEGINNING.

THENCE, N 85°-19'-00" E, a distance of 45.80 feet to a point.

THENCE, S 4°-41'-00" W, a distance of 90.00 feet to a point.

THENCE, S 85°-19'-00" W, a distance of 55.00 feet to a point.

THENCE, with the east lines of the aforesaid 2.760 acre tract, the following two courses:

N 4°-41'-00" E, a distance of 75.50 feet to a 5/8 inch iron rod set.

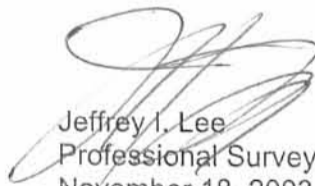
N 34°-15'-05" E, a distance of 18.39 feet to the point of beginning.

The basis for bearings is the center-line of Ohio Route 235 at Township Road 293, being S 87°-06'-13" E, and all other bearings are from angles and distances measured in a field survey by Lee Surveying and Mapping Co., Inc. on August 16, 1999 and August 1, 2003.

Description prepared by:



ORIGINAL STAMP IN GREEN


Jeffrey I. Lee
Professional Surveyor 6359
November 18, 2003

L-3248

INDEXED ON MAP
5673 3D2

Lee Surveying and Mapping Co., Inc.

Land Surveys • Topography • Subdivisions • Construction Layout

117 N. Madriver St.
Bellefontaine OH 43311



Phone: (937) 593-7335
Fax: (937) 593-7444

FOX INVESTMENTS, LTD DRAINAGE EASEMENT

Lying in Virginia Military Survey 12277, Stokes Township, Logan County, Ohio.

Being a drainage easement on the Fox Investments, Ltd 3.232 acre tract as deeded and described in Official Record 520, Page 30 of the Logan County Records of Deeds and being more particularly described as follows:

Beginning at a railroad spike found on the intersection of center-lines of Ohio Route 235 (60 feet wide) and Township Road 293 (60 feet wide).

THENCE, with the center-line of Ohio Route 235, S 87°-06'-13" E, a distance of 329.53 feet to a harrow tooth found.

THENCE, with the center-line of Ohio Route 235, S 87°-02'-49" E, a distance of 439.31 feet to a MAG nail set at the TRUE POINT OF BEGINNING.

THENCE, with the center-line of Ohio Route 235, S 87°-02'-49" E, a distance of 42.00 feet to a MAG nail set.

THENCE, with the west line of the Frances D. Reed 1.77 acre tract (O.R. 313, Pg. 227, Parcel I), S 1°-15'-17" W, a distance of 197.00 feet to a point.

THENCE, N 87°-40'-00" W, a distance of 85.40 feet to a point.

THENCE, N 19°-27'-11" E, a distance of 108.14 feet to a 5/8 inch iron rod set.

THENCE, with a curve to the left having a central angle of 16°-30'-00", a radius of 166.00 feet, an arc length of 47.80 feet and a chord bearing N 11°-12'-11" E, a distance of 47.64 feet to a 5/8 inch iron rod set.

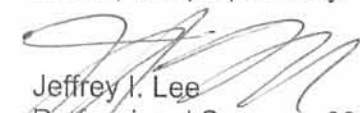
THENCE, N 2°-57'-11" E, a distance of 47.00 feet to a the point of beginning, passing a 5/8 inch iron rod set at 17.00 feet.

The basis for bearings is the center-line of Ohio Route 235 at Township Road 293, being S 87°-06'-13" E, and all other bearings are from angles and distances measured in a field survey by Lee Surveying and Mapping Co., Inc. on August 16, 1999 and August 1, 2003.

Description prepared by:



ORIGINAL STAMP IN GREEN


Jeffrey I. Lee
Professional Surveyor 6359
November 18, 2003

L-3248

INDEXED ON MAP

5673 3D-3

Lee Surveying and Mapping Co., Inc.

Land Surveys • Topography • Subdivisions • Construction Layout

117 N. Madriver St.
Bellefontaine OH 43311



Phone: (937) 593-7335
Fax: (937) 593-7444

FOX INVESTMENTS, LTD 10.00 FEET WIDE WATER LINE EASEMENT

Lying in Virginia Military Survey 12277, Stokes Township, Logan County, Ohio.

Being a 10.00 feet wide water line easement through the Fox Investments, Ltd 3.232 acre tract as deeded and described in Official Record 520, Page 30 of the Logan County Records of Deeds and being more particularly described as follows:

Beginning at a railroad spike found on the intersection of center-lines of Ohio Route 235 (60 feet wide) and Township Road 293.

THENCE, with the center-line of Ohio Route 235, S 87°-06'-13"E, a distance of 329.53 feet to a harrow tooth found.

THENCE, with the center-line of Ohio Route 235, S 87°-02'-49"E, a distance of 266.64 feet to a MAG nail set.

THENCE, with the east lines of Vicki A. Fay 2.760 acre tract (O.R. 511, Pg. 124, Tract II), the following two courses:

S 9°-55'-09"W, a distance of 266.26 feet to a 5/8 inch iron rod set, passing a 5/8 inch iron rod set at 30.22 feet.

S 34°-15'-05"W, a distance of 64.41 feet to a point.

THENCE, S 85°-19'-00"E, a distance of 31.50 feet to a point at the TRUE POINT OF BEGINNING.

THENCE, with the center-line of this easement, the following three courses:

N 34°-42'-00"E, a distance of 31.40 feet to a point.

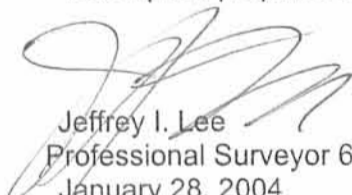
S 87°-40'-00"E, a distance of 72.60 feet to a point.

N 18°-11'-20"E, a distance of 249.00 feet to the terminus of this easement.

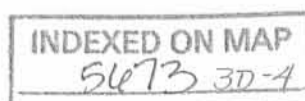
The basis for bearings is the center-line of Ohio Route 235 at Township Road 293, being S 87°-06'-13"E, and all other bearings are from angles and distances measured in a field survey by Lee Surveying and Mapping Co., Inc. on August 16, 1999 and August 1, 2003.

Description prepared by:




Jeffrey I. Lee
Professional Surveyor 6359
January 28, 2004

L-3248



Lee Surveying and Mapping Co., Inc.

Land Surveys • Topography • Subdivisions • Construction Layout

117 N. Madriver St.
Bellefontaine OH 43311



Phone: (937) 593-7335
Fax: (937) 593-7444

FOX INVESTMENTS, LTD 15.00 FEET WIDE SANITARY EASEMENT

Lying in Virginia Military Survey 12277, Stokes Township, Logan County, Ohio.

Being a 15.00 feet wide sanitary easement through the Fox Investments, Ltd 3.232 acre tract as deeded and described in Official Record 520, Page 30 of the Logan County Records of Deeds and being more particularly described as follows:

Beginning at a railroad spike found on the intersection of center-lines of Ohio Route 235 (60 feet wide) and Township Road 293 (60 feet wide).

THENCE, with the center-line of Ohio Route 235, S 87°-06'-13"E, a distance of 329.53 feet to a harrow tooth found.

THENCE, with the center-line of Ohio Route 235, S 87°-02'-49"E, a distance of 481.31 feet to a MAG nail set.

THENCE, with the west lines of the Frances D. Reed 1.77 acre and 1.0 acre tract (O.R. 313, Pg. 227, Parcel I and Parcel II) and Wannemacher Construction 9.69 acre tract (O.R. 253, Pg. 711), S 1°-15'-17"W, a distance of 421.81 feet to a point at the TRUE POINT OF BEGINNING.

THENCE, with the center-line of this easement, the following three courses:

N 87°-06'-00"W, a distance of 156.70 feet to a point.

N 1°-47'-00"E, a distance of 132.90 feet to a point.

N 19°-27'-11"E, a distance of 216.70 feet to the terminus of this easement.

The basis for bearings is the center-line of Ohio Route 235 at Township Road 293, being S 87°-06'-13"E, and all other bearings are from angles and distances measured in a field survey by Lee Surveying and Mapping Co., Inc. on August 16, 1999 and August 1, 2003.

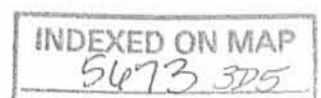


ORIGINAL STAMP IN GREEN

Description prepared by:

A handwritten signature in black ink, appearing to read 'J. Lee', is written over the typed name and title.
Jeffrey I. Lee
Professional Surveyor 6359
January 28, 2004

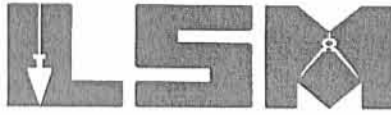
L-3248



Lee Surveying and Mapping Co., Inc.

Land Surveys • Topography • Subdivisions • Construction Layout

117 N. Madriver St.
Bellefontaine OH 43311



Phone: (937) 593-7335
Fax: (937) 593-7444

FOX INVESTMENTS, LTD UNIT A 0.385 ACRE

Lying in Virginia Military Survey 12277, Stokes Township, Logan County, Ohio.

Being out of the Fox Investments, Ltd 3.232 acre tract as deeded and described in Official Record 520, Page 30 of the Logan County Records of Deeds and being more particularly described as follows:

Beginning at a railroad spike found on the intersection of center-lines of Ohio Route 235 (60 feet wide) and Township Road 293 (60 feet wide).

THENCE, with the center-line of Ohio Route 235, S 87°-06'-13" E, a distance of 329.53 feet to a harrow tooth found.

THENCE, with the center-line of Ohio Route 235, S 87°-02'-49" E, a distance of 439.31 feet to a MAG nail set at the TRUE POINT OF BEGINNING.

THENCE, with the center-line of Ohio Route 235, S 87°-02'-49"E, a distance of 42.00 feet to a MAG nail set.

THENCE, with the west line of the Frances D. Reed 1.77 acre tract (O.R. 313, Pg. 227, Parcel I), S 1°-15'-17" W, a distance of 255.01 feet to a 5/8 inch iron rod set.

THENCE, N 87°-40'-00" W, a distance of 104.35 feet to a 5/8 inch iron rod set.

THENCE, N 19°-27'-11" E, a distance of 168.83 feet to a 5/8 inch iron rod set.

THENCE, with a curve to the left having a central angle of 16°-30'-00", a radius of 166.00 feet, an arc length of 47.80 feet and a chord bearing N 11°-12'-11" E, a distance of 47.64 feet to a 5/8 inch iron rod set.

THENCE, N 2°-57'-11" E, a distance of 47.00 feet to the point of beginning, passing a 5/8 inch iron rod set at 17.00 feet.

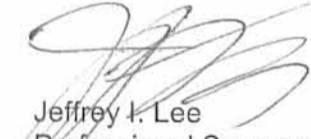
Containing 0.385 acre, of which 0.029 acre is within the highway right-of-way.

The basis for bearings is the center-line of Ohio Route 235 at Township Road 293, being S 87°-06'-13" E, and all other bearings are from angles and distances measured in a field survey by Lee Surveying and Mapping Co., Inc. on August 16, 1999 and August 1, 2003.

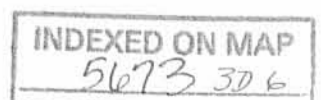
Description prepared by:



ORIGINAL STAMP IN GREEN


Jeffrey I. Lee
Professional Surveyor 6359
February 10, 2004

L-3248



Lee Surveying and Mapping Co., Inc.

Land Surveys • Topography • Subdivisions • Construction Layout

117 N. Madriver St.
Bellefontaine OH 43311



Phone: (937) 593-7335
Fax: (937) 593-7444

FOX INVESTMENTS, LTD ADDITIONAL AREA 2.847 ACRES

Lying in Virginia Military Survey 12277, Stokes Township, Logan County, Ohio.

Being the remainder of the Fox Investments, Ltd 3.232 acre tract as deeded and described in Official Record 520, Page 30 of the Logan County Records of Deeds and being more particularly described as follows:

Beginning at a railroad spike found on the intersection of center-lines of Ohio Route 235 (60 feet wide) and Township Road 293 (60 feet wide).

THENCE, with the center-line of Ohio Route 235, S 87°-06'-13" E, a distance of 329.53 feet to a harrow tooth found.

THENCE, with the center-line of Ohio Route 235, S 87°-02'-49" E, a distance of 266.64 feet to a MAG nail set at the TRUE POINT OF BEGINNING.

THENCE, with the center-line of Ohio Route 235, S 87°-02'-49"E, a distance of 172.67 feet to a MAG nail set.

THENCE, S 2°-57'-11"W, a distance of 47.00 feet to a 5/8 inch iron rod set, passing a 5/8 inch iron rod set at 30.00 feet.

THENCE, with a curve to the right, having a central angle of 16°-30'-00", a radius of 166.00 feet, an arc length of 47.80 feet, a chord bearing S 11°-12'-11"W, a distance of 47.64 feet to a 5/8 inch iron rod set.

THENCE, S 19°-27'-11"W, a distance of 168.83 feet to a 5/8 inch iron rod set.

THENCE, S 87°-40'-00"E, a distance of 104.35 feet to a 5/8 inch iron rod set.

THENCE, with the west lines of the Frances D. Reed 1.77 acre tract (O.R. 313, Pg. 227, Parcel I), the Frances D. Reed 1.0 acre tract (O.R. 313, Pg. 227, Tract II), and the Wannemacher Construction 9.69 acre tract (O.R. 253, Pg. 711), S 1°-15'-17"W, a distance of 273.42 feet to a 1/2 inch iron pipe found.

THENCE, with the north line of Kings Landing Allotment No. 9 (Plat Cabinet A, Slide 511), N 87°-07'-13"W, a distance of 311.49 feet to a 5/8 inch iron rod set.

THENCE, with the east lines of the Vicki A. Fay and Bradley D. Fay 2.760 acre tract (O.R. 511, Pg. 124, Tract II), the following three courses:

N 4°-41'-00"E, a distance of 193.64 feet to a 5/8 inch iron rod set.

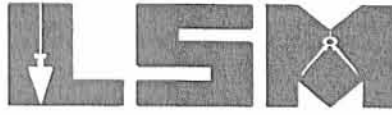
N 34°-15'-05"E, a distance of 82.80 feet to a 5/8 inch iron rod set.

INDEXED ON MAP
5673 3D7

Lee Surveying and Mapping Co., Inc.

Land Surveys • Topography • Subdivisions • Construction Layout

117 N. Madriver St.
Bellefontaine OH 43311



Phone: (937) 593-7335
Fax: (937) 593-7444

N 9°-55'-09"E, a distance of 266.26 feet to the point of beginning.

Containing 2.847 acres, of which 0.120 acre is within the highway right-of-way.

The basis for bearings is the center-line of Ohio Route 235 at Township Road 293, being S 87°-06'-13" E, and all other bearings are from angles and distances measured in a field survey by Lee Surveying and Mapping Co., Inc. on August 16, 1999 and August 1, 2003.

Description prepared by:



ORIGINAL STAMP IN GREEN

A handwritten signature in black ink, appearing to read 'Jeffrey I. Lee'.

Jeffrey I. Lee
Professional Surveyor 6359
March 11, 2004

L-3248



Lee Surveying and Mapping Co., Inc.

Land Surveys • Topography • Subdivisions • Construction Layout

117 N. Madriver St.
Bellefontaine OH 43311



Phone: (937) 593-7335
Fax: (937) 593-7444

1975-2005 - 30 YEARS OF EXCELLENCE

**FOX INVESTMENTS, LTD
UNIT B
0.470 ACRE**

Lying in Virginia Military Survey 12277, Stokes Township, Logan County, Ohio.

Being out of the Fox Investments, Ltd. 2.847 acre tract as deeded and described in Official Record 745, Page 817 of the Logan County Records of Deeds and being more particularly described as follows:

Beginning at a railroad spike found on the intersection of center-lines of Ohio Route 235 (60 feet wide) and Township Road 293 (60 feet wide).

THENCE, with the center-line of Ohio Route 235, the following two courses:

S 87°-06'-13"E, a distance of 329.53 feet to a harrow tooth found.

S 87°-02'-49"E, a distance of 266.64 feet to a MAG nail set at the TRUE POINT OF BEGINNING.

THENCE, with the center-line of Ohio Route 235, S 87°-02'-49"E, a distance of 140.67 feet to a MAG nail set.

THENCE, S 2°-57'-11"W, a distance of 47.00 feet to a 5/8 inch iron rod set, passing a 5/8 inch iron rod set at 30.00 feet.

THENCE, with a curve to the right, having a central angle of 16°-30'-00", a radius of 134.00 feet, an arc length of 38.59 feet, a chord bearing S 11°-12'-11"W, a chord distance of 38.46 feet to a 5/8 inch iron rod set.

THENCE, S 19°-27'-11"W, a distance of 59.73 feet to a 5/8 inch iron rod set.

THENCE, N 87°-40'-00"W, a distance of 135.77 feet to a 5/8 inch iron rod set.

THENCE, with the east line of the Vicki A. Fay and Bradley D. Fay 2.760 acre tract (O.R. 511, Pg. 124, Tract II), N 9°-55'-09"E, a distance of 144.86 feet to the point of beginning, passing a 5/8 inch iron rod set at 114.64 feet.


Containing 0.470 acre, of which 0.098 acre is within the highway right-of-way.

The basis for bearings is the center-line of Ohio Route 235 at Township Road 293, being S 87°-06'-13"E, and all other bearings are from angles and distances measured in a field survey by Lee Surveying and Mapping Co., Inc. on April 8, 2005.



ORIGINAL STAMP IN GREEN

Description prepared by:


Jeffrey I. Lee
Professional Surveyor 6359
April 11, 2005

L-3248

INDEXED ON MAP
5673 4D-1

REV'D 5.2.05 SWM OK

Lee Surveying and Mapping Co., Inc.

Land Surveys • Topography • Subdivisions • Construction Layout

117 N. Madriver St.
Bellefontaine OH 43311



Phone: (937) 593-7335
Fax: (937) 593-7444

1975-2005 - 30 YEARS OF EXCELLENCE

**FOX INVESTMENTS, LTD
ADDITIONAL AREA
2.377 ACRES**

Lying in Virginia Military Survey 12277, Stokes Township, Logan County, Ohio.

Being the remainder of the Fox Investments, Ltd 2.847 acre tract as deeded and described in Official Record 745, Page 817 of the Logan County Records of Deeds and being more particularly described as follows:

Beginning at a railroad spike found on the intersection of center-lines of Ohio Route 235 (60 feet wide) and Township Road 293 (60 feet wide).

THENCE, with the center-line of Ohio Route 235, the following two courses:

S 87°-06'-13" E, a distance of 329.53 feet to a harrow tooth found.

S 87°-02'-49" E, a distance of 407.31 feet to a MAG nail set at the TRUE POINT OF BEGINNING.

THENCE, with the center-line of Ohio Route 235, S 87°-02'-49"E, a distance of 32.00 feet to a MAG nail set.

THENCE, with the lines of the North Point Landing Condominiums Phase I as platted and recorded in Plat Cabinet B, Slides 88 A & B, the following four courses:

S 2°-57'-11"W, a distance of 47.00 feet to a 5/8 inch iron rod set, passing a 5/8 inch iron rod set at 30.00 feet.

With a curve to the right, having a central angle of 16°-30'-00", a radius of 166.00 feet, an arc length of 47.80 feet, a chord bearing S 11°-12'-11"W, a chord distance of 47.64 feet to a 5/8 inch iron rod set.

S 19°-27'-11"W, a distance of 168.83 feet to a 5/8 inch iron rod set.

S 87°-40'-00"E, a distance of 104.35 feet to a 5/8 inch iron rod set.

THENCE, with the west lines of the Frances D. Reed 1.77 acre tract and 1.0 acre tract (O.R. 313, Pg. 227, Parcel I and II), and the Wannemacher Construction 9.69 acre tract (O.R. 253, Pg. 711), S 1°-15'-17"W, a distance of 273.42 feet to a 1/2 inch iron pipe found.

THENCE, with the north line of Kings Landing Allotment No. 9 (Plat Cabinet A, Slide 511), N 87°-07'-13"W, a distance of 311.49 feet to a 5/8 inch iron rod set.

THENCE, with the east lines of the Vicki A. Fay and Bradley D. Fay 2.760 acre tract (O.R. 511, Pg. 124, Tract II), the following three courses:

N 4°-41'-00"E, a distance of 193.64 feet to a 5/8 inch iron rod set.

N 34°-15'-05"E, a distance of 82.80 feet to a 5/8 inch iron rod set.

INDEXED ON MAP
5673 4D 2

Lee Surveying and Mapping Co., Inc.

Land Surveys • Topography • Subdivisions • Construction Layout

117 N. Madriver St.
Bellefontaine OH 43311



Phone: (937) 593-7335
Fax: (937) 593-7444

1975-2005 - 30 YEARS OF EXCELLENCE

N 9°-55'-09"E, a distance of 121.40 feet to 5/8 inch iron rod set.

THENCE, S 87°-40'-00"E, a distance of 135.77 feet to a 5/8 inch iron rod set.

THENCE, N 19°-27'-11"E, a distance of 59.73 feet to a 5/8 inch iron rod set.

THENCE, with a curve to the left, having a central angle of 16°-30'-00", a radius of 134.00 feet, an arc distance of 38.59 feet, a chord bearing of N 11°-12'-11"E, a chord distance of 38.46 feet to a 5/8 inch iron rod set.

THENCE, N 2°-57'-11"E, a distance of 47.00 feet to the point of beginning, passing a 5/8 inch iron rod set at 17.00 feet.

Containing 2.377 acres, of which 0.022 acre is within the highway right-of-way.

The basis for bearings is the center-line of Ohio Route 235 at Township Road 293, being S 87°-06'-13" E, and all other bearings are from angles and distances measured in a field survey by Lee Surveying and Mapping Co., Inc. on April 8, 2005.



ORIGINAL STAMP IN GREEN

Description prepared by:

A handwritten signature in black ink, appearing to read 'J. Lee'.

Jeffrey I. Lee
Professional Surveyor 6359
April 11, 2005

L-3248

INDEXED ON MAP
5673 42-3