

YOUNG SURVEY

AUGUST, 1974

The following described real estate situated in Virginia Military Survey No. 12277, Stokes Township, Logan County, Ohio and being more particularly described as follows:

Beginning at an iron bar in the centerline of S.R.235 at the northwest corner of Albert Reed's 1.77 acre tract; thence with the west line of said Reed and Robert Schmitt's 9.69 acre tract S.9°29'E. 529.0 feet to an iron pipe in the north line of King's Allotment No. 9; thence with said north line S.82°10'W. 802.0 feet to an iron bar; thence N.22°11'E. 610.6 feet to an iron bar in the centerline of S.R.235; passing iron bars at 305.3 feet and 576.0 feet; thence with said centerline N.82°10'E. 481.3 feet to the place of beginning.

Containing 7.79 acres more or less.

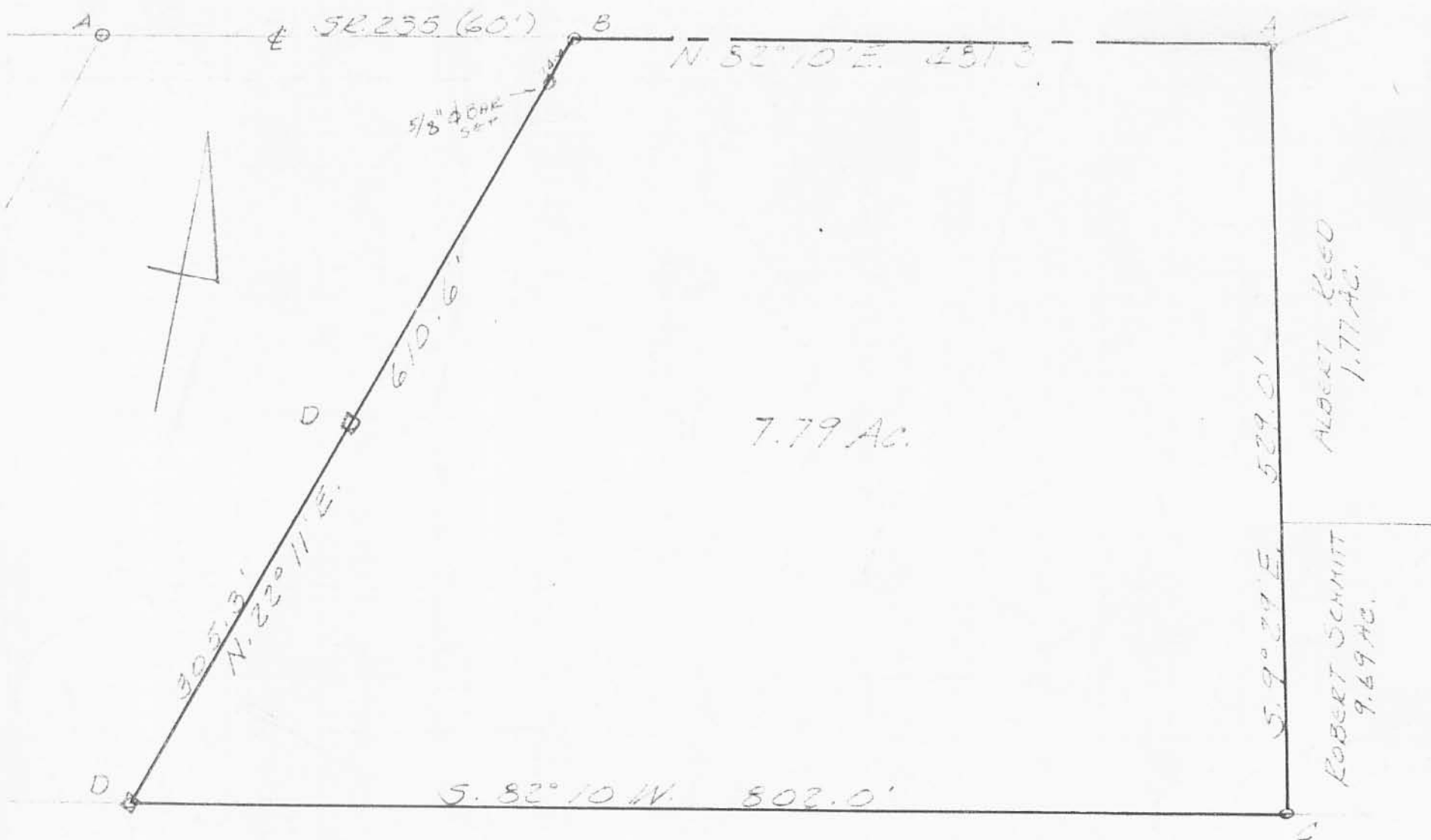
The above described 7.79 acre being on the east side of Chester N. Young's 11.79 acre tract.

I hereby certify that the above is a true and accurate description of a survey made by me.

Leslie H. Geeslin  
Reg. Surveyor 5248  
Rushsylvania, Ohio 43327

5623 1D

INDEXED ON MAP



KING'S LANDING ALLOTMENT NO. 9

- A = R.R. SPIKE FD
- B = HARROW TOOTH SET
- C = 3/4" PIPE FD.
- D = 3/4" # BAR SET

YOUNG SURVEY  
 V.M.S. 12277  
 STOKES TOWNSHIP  
 LOGAN COUNTY, OHIO  
 AUGUST, 1974,  
 SCALE 1"=100'

5673 1P

INDEXED ON MAP

LESLIE H. GEESLIN  
 REG. SURVEYOR 5248  
 PENNSYLVANIA, OHIO

Rec 8-17-99 OKJLH



# Lee Surveying and Mapping Co., Inc.



Land Surveys • Topography • Subdivisions • Construction Layout

117 N. Madriver Street  
Bellefontaine OH 43311

Phone: (937) 593-7335  
Fax: (937) 593-7444

## TRACT A 1.788 ACRES

Lying in Virginia Military Survey 12277, Stokes Township, Logan County, Ohio.

Being out of the Vicki A. Fulkerson 7.79 acre tract as deeded and described in Official Record 306, Page 290 of the Logan County Records of Deeds and being more particularly described as follows:

Beginning at a railroad spike found at the intersection of center-lines of State Route 235 (60 feet wide) and Township Road 293.

THENCE, with the center-line of State Route 235, S 87°-06'-13" E, a distance of 329.53 feet to a harrow tooth found at the TRUE POINT OF BEGINNING.

THENCE, with the center-line of State Route 235, S 87°-02'-49" E, a distance of 206.18 feet to a MAG nail set.

THENCE, S 9°-55'-09" W, a distance of 278.24 feet to a 5/8 inch iron rod set, passing a 5/8 inch iron rod set at 30.22 feet.

THENCE, S 32°-08'-48" W, a distance of 24.49 feet to a 5/8 inch iron rod set.

THENCE, N 83°-22'-34" W, a distance of 320.27 feet to a 5/8 inch iron rod set.

THENCE, with the east lines of the Donald L. Donnelly 0.667 acre tract, (O.R. 200, Pg. 305) and the Chester N. Young 2.00 acre tract (Vol. 389, Pg. 385), N 32°-49'-23" E, a distance of 319.50 feet to the point of beginning, passing a 5/8 inch iron rod found at 285.01 feet.

Containing 1.788 acres, of which 0.146 acre is in the highway right-of-way.

The basis for bearings is the center-line of State Route 235 at Township Road 293, being S 87°-06'-13" E, and all other bearings are from angles and distances measured in a field survey by Lee Surveying and Mapping Co., Inc. on August 16, 1999.



ORIGINAL STAMP IN GREEN

Description prepared by:

Jeffrey I. Lee  
Professional Surveyor 6359  
August 17, 1999

L-2787



Recd 8-17-99 OK JCL



# Lee Surveying and Mapping Co., Inc.



Land Surveys • Topography • Subdivisions • Construction Layout

117 N. Madriver Street  
Bellefontaine OH 43311

Phone: (937) 593-7335  
Fax: (937) 593-7444

## TRACT B 2.760 ACRES

Lying in Virginia Military Survey 12277, Stokes Township, Logan County, Ohio.

Being out of the Vicki A. Fulkerson 7.79 acre tract as deeded and described in Official Record 306, Page 290 of the Logan County Records of Deeds and being more particularly described as follows:

Beginning at a railroad spike found at the intersection of center-lines of State Route 235 (60 feet wide) and Township Road 293.

THENCE, with the center-line of State Route 235, S 87°-06'-13" E, a distance of 329.53 feet to a harrow tooth found.

THENCE, with the center-line of State Route 235, S 87°-02'-49" E, a distance of 206.18 feet to a MAG nail set at the TRUE POINT OF BEGINNING.

THENCE, with the center-line of State Route 235, S 87°-02'-49" E, a distance of 60.45 feet to a MAG nail set.

THENCE, S 9°-55'-09" W, a distance of 266.26 feet to a 5/8 inch iron rod set, passing a 5/8 inch iron rod set at 30.22 feet.

THENCE, S 34°-15'-05" W, a distance of 82.80 feet to a 5/8 inch iron rod set.

THENCE, S 4°-41'-00" W, a distance of 193.64 feet to a 5/8 inch iron rod set.

THENCE, with the north line of the Kings Landing Allotment Number 9 (Plat Cabinet A, Slide 511), N 87°-07'-13" W, a distance of 489.42 feet to a 3/4 inch square iron bar found.

THENCE, with the east lines of the Carol Tanner 0.667 acre tract (O.R. 275, Pg. 393), the Bobby Clymer 0.666 acre tract (O.R. 269, Pg. 273), and the Donald L. Donnelly 0.667 acre tract (O.R. 200, Pg. 305), N 32°-49'-23" E, a distance of 290.79 feet to a 5/8 inch iron rod set.

THENCE, S 83°-22'-34" E, a distance of 320.27 feet to a 5/8 inch iron rod set.

THENCE, N 32°-08'-48" E, a distance of 24.49 feet to a 5/8 inch iron rod set.

THENCE, N 9°-55'-09" E, a distance of 278.24 feet to the point of beginning, passing a 5/8 inch iron rod set at 248.02 feet.

Containing 2.760 acres, of which 0.042 acre is in the highway right-of-way.

The basis for bearings is the center-line of State Route 235 at Township Road 293, being S 87°-06'-13" E, and all other bearings are from angles and distances measured in a field survey by Lee Surveying and Mapping Co., Inc. on August 16, 1999.



ORIGINAL STAMP IN GREEN

Description prepared by:

Jeffrey I. Lee  
Professional Surveyor 6359  
August 17, 1999

L-2787



Rec'd 8-17-99 OKgch



# Lee Surveying and Mapping Co., Inc.



Land Surveys • Topography • Subdivisions • Construction Layout

117 N. Madriver Street  
Bellefontaine OH 43311

Phone: (937) 593-7335  
Fax: (937) 593-7444

## TRACT C 3.232 ACRES

Lying in Virginia Military Survey 12277, Stokes Township, Logan County, Ohio.

Being out of the Vicki A. Fulkerson 7.79 acre tract as deeded and described in Official Record 306, Page 290 of the Logan County Records of Deeds and being more particularly described as follows:

Beginning at a railroad spike found at the intersection of center-lines of State Route 235 (60 feet wide) and Township Road 293.

THENCE, with the center-line of State Route 235, S 87°-06'-13" E, a distance of 329.53 feet to a harrow tooth found.

THENCE, with the center-line of State Route 235, S 87°-02'-49" E, a distance of 266.63 feet to a MAG nail set at the TRUE POINT OF BEGINNING.

THENCE, with the center-line of State Route 235, S 87°-02'-49" E, a distance of 214.68 feet to a MAG nail set.

THENCE, with the west lines of the Frances D. Reed 1.77 acre tract (O.R. 313, Pg. 227, Parcel I), the Frances D. Reed 1.0 acre tract (O.R. 313, Pg. 227, Parcel II), the Wannemacher Construction 9.69 acre tract (O.R. 253, Pg. 711), S 1°-15'-17" W, a distance of 528.42 feet to a 1/2 inch iron pipe found, passing a 5/8 inch iron rod set at 30.01 feet.

THENCE, with the north line of the Kings Landing Allotment Number 9 (Plat Cabinet A, Slide 511), N 87°-07'-13" W, a distance of 311.49 feet to a 5/8 inch iron rod set.

THENCE, N 4°-41'-00" E, a distance of 193.64 feet to a 5/8 inch iron rod set.

THENCE, N 34°-15'-05" E, a distance of 82.80 feet to a 5/8 inch iron rod set.

THENCE, N 9°-55'-09" E, a distance of 266.26 feet to the point of beginning, passing a 5/8 inch iron rod set at 236.04 feet.

Containing 3.232 acres, of which 0.149 acre is in the highway right-of-way.

The basis for bearings is the center-line of State Route 235 at Township Road 293, being S 87°-06'-13" E, and all other bearings are from angles and distances measured in a field survey by Lee Surveying and Mapping Co., Inc. on August 16, 1999.



ORIGINAL STAMP IN GREEN

Description prepared by:

*Jeffrey I. Lee*  
Jeffrey I. Lee  
Professional Surveyor 6359  
August 17, 1999

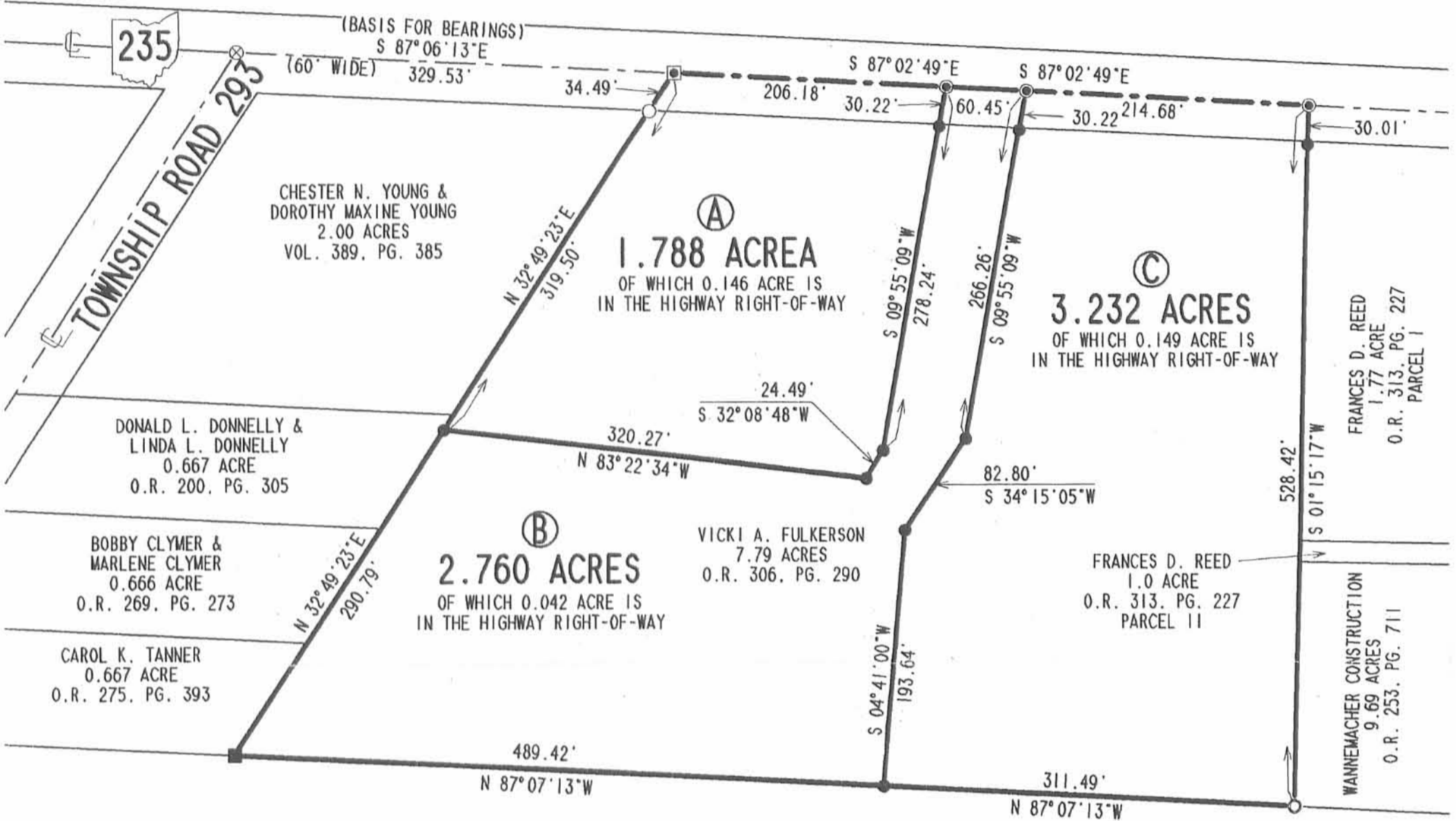
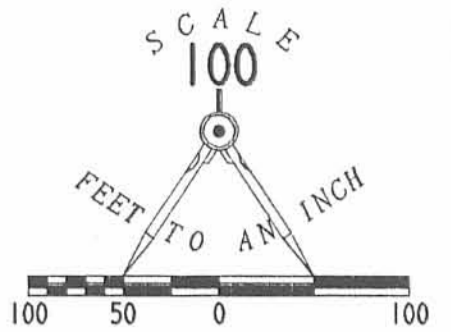
L-2787

INDEXED OR MAP  
5673

2D-3

**LEGEND**

- 5/8" IRON ROD FOUND
- 5/8" IRON ROD SET
- 3/4" SQUARE IRON BAR FOUND
- 1/2" IRON PIPE FOUND
- ▣ HARROW TOOTH FOUND
- ⊙ MAG NAIL SET
- ⊗ RAILROAD SPIKE FOUND



KINGS LANDING ALLOTMENT NO. 9  
PLAT CABINET A, SLIDE 511

**SURVEY OF 3 TRACTS  
OUT OF THE  
VICKI A. FULKERSON  
7.79 ACRE TRACT  
OFFICIAL RECORD 306, PAGE 290  
VIRGINIA MILITARY SURVEY 12277  
STOKES TOWNSHIP  
LOGAN COUNTY, OHIO**

SURVEYED BY:

JEFFREY I. LEE  
PROFESSIONAL SURVEYOR 6359  
AUGUST 16, 1999

COPYRIGHT 1999 BY:

LEE SURVEYING & MAPPING CO., INC.  
117 North Madriver Street  
BELLEFONTAINE, OHIO 43311  
(937) 593-7335



ORIGINAL STAMP IN GREEN

INDEXED ON MAP  
5673 2P

2 WORKING DAYS  
**BEFORE YOU DIG**  
CALL TOLL FREE **800-362-2764**  
OHIO UTILITIES PROTECTION SERVICE.

# Lee Surveying and Mapping Co., Inc.

Land Surveys • Topography • Subdivisions • Construction Layout

117 N. Madriver St.  
Bellefontaine OH 43311



Phone: (937) 593-7335  
Fax: (937) 593-7444

## NORTH POINT LANDING CONDOMINIUMS 32.00 FEET WIDE INGRESS-EGRESS EASEMENT

Lying in Virginia Military Survey 12277, Stokes Township, Logan County, Ohio.

Being a 32.00 feet wide ingress/egress easement over Fox Investments, Ltd 3.232 acre tract as deeded and described in Official Record 520, Page 30 of the Logan County Records of Deeds and being more particularly described as follows:

Beginning at a railroad spike found at the intersection of center-lines of Ohio Route 235 (60 feet wide) and Township Road 293.

THENCE, with the center-line of Ohio Route 235, S 87°-06'-13" E, a distance of 329.53 feet to a harrow tooth found.

THENCE, with the center-line of Ohio Route 235, S 87°-02'-49" E, a distance of 407.31 feet to a MAG nail set at the TRUE POINT OF BEGINNING.

THENCE, with the center-line of Ohio Route 235, S 87°-02'-49" E, a distance of 32.00 feet to a MAG nail set.

THENCE, S 2°-57'-11" W, a distance of 47.00 feet to a 5/8 inch iron rod set, passing a 5/8 inch iron rod set at 30.00 feet.

THENCE, with a curve to the right having a central angle of 16°-30'-00", a radius of 166.00 feet, an arc length of 47.80 feet and a chord bearing S 11°-12'-11" W, a distance of 47.64 feet to a 5/8 inch iron rod set.

THENCE, S 19°-27'-11" W, a distance of 193.50 feet to a 5/8 inch iron rod set.

THENCE, with a curve to the left having a central angle of 18°-14'-24", a radius of 74.00 feet, an arc length of 23.56 feet and a chord bearing S 10°-19'-59" W, a distance of 23.46 feet to a 5/8 inch iron rod set.

THENCE, N 88°-47'-13" W, a distance of 32.00 feet to a 5/8 inch iron rod set.

THENCE, with a curve to the left having a central angle of 18°-14'-24", a radius of 106.00 feet, an arc length of 33.74 feet and a chord bearing N 10°-19'-59" E, a distance of 33.60 feet to a 5/8 inch iron rod set.

THENCE, N 19°-27'-11" E, a distance of 193.50 feet to a 5/8 inch iron rod set.

THENCE, with a curve to the right having a central angle of 16°-30'-00", a radius of 134.00 feet, an arc length of 38.59 feet and a chord bearing N 11°-12'-11" E, a distance of 38.46 feet to a 5/8 inch iron rod set.

THENCE, N 2°-57'-11" E, a distance of 47.00 feet to the point of beginning, passing a 5/8 inch iron rod set at 17.00 feet.

The basis for bearings is the center-line of Ohio Route 235 at Township Road 293, being S 87°-06'-13" E, and all other bearings are from angles and distances measured in a field survey by Lee Surveying and Mapping Co., Inc. on August 16, 1999 and August 1, 2003.

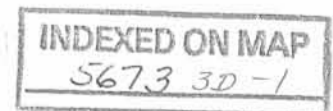


ORIGINAL STAMP IN GREEN

Description prepared by:

A handwritten signature in black ink, appearing to read 'Jeffrey I. Lee'.

Jeffrey I. Lee  
Professional Surveyor 6359  
August 1, 2003  
Revised May 6, 2004



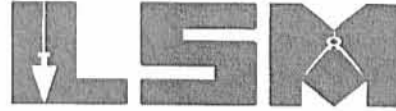
L-2787

Received 3/29/04 OKJUH

# Lee Surveying and Mapping Co., Inc.

Land Surveys • Topography • Subdivisions • Construction Layout

117 N. Madriver St.  
Bellefontaine OH 43311



Phone: (937) 593-7335  
Fax: (937) 593-7444

## FOX INVESTMENTS, LTD WATER SUPPLY EASEMENT

Lying in Virginia Military Survey 12277, Stokes Township, Logan County, Ohio.

Being a water supply easement on and through the Fox Investments, Ltd 3.232 acre tract as deeded and described in Official Record 520, Page 30 of the Logan County Records of Deeds and being more particularly described as follows:

Beginning at a railroad spike found on the intersection of center-lines of Ohio Route 235 (60 feet wide) and Township Road 293 (60 feet wide).

THENCE, with the center-line of Ohio Route 235, S 87°-06'-13" E, a distance of 329.53 feet to a harrow tooth found.

THENCE, with the center-line of Ohio Route 235, S 87°-02'-49" E, a distance of 266.64 feet to a MAG nail set.

THENCE, with the east line of the Vicki A. Fay 2.760 acre tract (O.R. 511, Pg. 124, Tract II), the following two courses:

S 9°-55'-09" W, a distance of 266.26 feet to 5/8 inch iron rod set, passing a 5/8 inch iron rod set at 30.22 feet.

S 34°-15'-05" W, a distance of 64.41 feet to a point at the TRUE POINT OF BEGINNING.

THENCE, N 85°-19'-00" E, a distance of 45.80 feet to a point.

THENCE, S 4°-41'-00" W, a distance of 90.00 feet to a point.

THENCE, S 85°-19'-00" W, a distance of 55.00 feet to a point.

THENCE, with the east lines of the aforesaid 2.760 acre tract, the following two courses:

N 4°-41'-00" E, a distance of 75.50 feet to a 5/8 inch iron rod set.

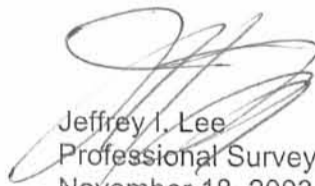
N 34°-15'-05" E, a distance of 18.39 feet to the point of beginning.

The basis for bearings is the center-line of Ohio Route 235 at Township Road 293, being S 87°-06'-13" E, and all other bearings are from angles and distances measured in a field survey by Lee Surveying and Mapping Co., Inc. on August 16, 1999 and August 1, 2003.

Description prepared by:



ORIGINAL STAMP IN GREEN

  
Jeffrey I. Lee  
Professional Surveyor 6359  
November 18, 2003

L-3248

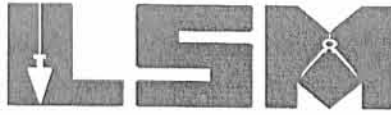
INDEXED ON MAP  
5673 3D2



# Lee Surveying and Mapping Co., Inc.

Land Surveys • Topography • Subdivisions • Construction Layout

117 N. Madriver St.  
Bellefontaine OH 43311



Phone: (937) 593-7335  
Fax: (937) 593-7444

## FOX INVESTMENTS, LTD DRAINAGE EASEMENT

Lying in Virginia Military Survey 12277, Stokes Township, Logan County, Ohio.

Being a drainage easement on the Fox Investments, Ltd 3.232 acre tract as deeded and described in Official Record 520, Page 30 of the Logan County Records of Deeds and being more particularly described as follows:

Beginning at a railroad spike found on the intersection of center-lines of Ohio Route 235 (60 feet wide) and Township Road 293 (60 feet wide).

THENCE, with the center-line of Ohio Route 235, S 87°-06'-13" E, a distance of 329.53 feet to a harrow tooth found.

THENCE, with the center-line of Ohio Route 235, S 87°-02'-49" E, a distance of 439.31 feet to a MAG nail set at the TRUE POINT OF BEGINNING.

THENCE, with the center-line of Ohio Route 235, S 87°-02'-49" E, a distance of 42.00 feet to a MAG nail set.

THENCE, with the west line of the Frances D. Reed 1.77 acre tract (O.R. 313, Pg. 227, Parcel I), S 1°-15'-17" W, a distance of 197.00 feet to a point.

THENCE, N 87°-40'-00" W, a distance of 85.40 feet to a point.

THENCE, N 19°-27'-11" E, a distance of 108.14 feet to a 5/8 inch iron rod set.

THENCE, with a curve to the left having a central angle of 16°-30'-00", a radius of 166.00 feet, an arc length of 47.80 feet and a chord bearing N 11°-12'-11" E, a distance of 47.64 feet to a 5/8 inch iron rod set.

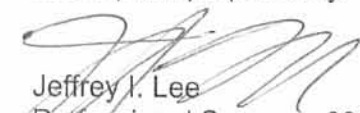
THENCE, N 2°-57'-11" E, a distance of 47.00 feet to a the point of beginning, passing a 5/8 inch iron rod set at 17.00 feet.

The basis for bearings is the center-line of Ohio Route 235 at Township Road 293, being S 87°-06'-13" E, and all other bearings are from angles and distances measured in a field survey by Lee Surveying and Mapping Co., Inc. on August 16, 1999 and August 1, 2003.

Description prepared by:



ORIGINAL STAMP IN GREEN

  
Jeffrey I. Lee  
Professional Surveyor 6359  
November 18, 2003

L-3248

INDEXED ON MAP

5673 3D-3

# Lee Surveying and Mapping Co., Inc.

Land Surveys • Topography • Subdivisions • Construction Layout

117 N. Madriver St.  
Bellefontaine OH 43311



Phone: (937) 593-7335  
Fax: (937) 593-7444

## FOX INVESTMENTS, LTD 10.00 FEET WIDE WATER LINE EASEMENT

Lying in Virginia Military Survey 12277, Stokes Township, Logan County, Ohio.

Being a 10.00 feet wide water line easement through the Fox Investments, Ltd 3.232 acre tract as deeded and described in Official Record 520, Page 30 of the Logan County Records of Deeds and being more particularly described as follows:

Beginning at a railroad spike found on the intersection of center-lines of Ohio Route 235 (60 feet wide) and Township Road 293.

THENCE, with the center-line of Ohio Route 235, S 87°-06'-13"E, a distance of 329.53 feet to a harrow tooth found.

THENCE, with the center-line of Ohio Route 235, S 87°-02'-49"E, a distance of 266.64 feet to a MAG nail set.

THENCE, with the east lines of Vicki A. Fay 2.760 acre tract (O.R. 511, Pg. 124, Tract II), the following two courses:

S 9°-55'-09"W, a distance of 266.26 feet to a 5/8 inch iron rod set, passing a 5/8 inch iron rod set at 30.22 feet.

S 34°-15'-05"W, a distance of 64.41 feet to a point.

THENCE, S 85°-19'-00"E, a distance of 31.50 feet to a point at the TRUE POINT OF BEGINNING.

THENCE, with the center-line of this easement, the following three courses:

N 34°-42'-00"E, a distance of 31.40 feet to a point.

S 87°-40'-00"E, a distance of 72.60 feet to a point.

N 18°-11'-20"E, a distance of 249.00 feet to the terminus of this easement.

The basis for bearings is the center-line of Ohio Route 235 at Township Road 293, being S 87°-06'-13"E, and all other bearings are from angles and distances measured in a field survey by Lee Surveying and Mapping Co., Inc. on August 16, 1999 and August 1, 2003.

Description prepared by:



A handwritten signature in black ink, appearing to read 'J. Lee', is written over the typed name and title.  
Jeffrey I. Lee  
Professional Surveyor 6359  
January 28, 2004

L-3248

INDEXED ON MAP  
5673 3D-4

# Lee Surveying and Mapping Co., Inc.

Land Surveys • Topography • Subdivisions • Construction Layout

117 N. Madriver St.  
Bellefontaine OH 43311



Phone: (937) 593-7335  
Fax: (937) 593-7444

## FOX INVESTMENTS, LTD 15.00 FEET WIDE SANITARY EASEMENT

Lying in Virginia Military Survey 12277, Stokes Township, Logan County, Ohio.

Being a 15.00 feet wide sanitary easement through the Fox Investments, Ltd 3.232 acre tract as deeded and described in Official Record 520, Page 30 of the Logan County Records of Deeds and being more particularly described as follows:

Beginning at a railroad spike found on the intersection of center-lines of Ohio Route 235 (60 feet wide) and Township Road 293 (60 feet wide).

THENCE, with the center-line of Ohio Route 235, S 87°-06'-13"E, a distance of 329.53 feet to a harrow tooth found.

THENCE, with the center-line of Ohio Route 235, S 87°-02'-49"E, a distance of 481.31 feet to a MAG nail set.

THENCE, with the west lines of the Frances D. Reed 1.77 acre and 1.0 acre tract (O.R. 313, Pg. 227, Parcel I and Parcel II) and Wannemacher Construction 9.69 acre tract (O.R. 253, Pg. 711), S 1°-15'-17"W, a distance of 421.81 feet to a point at the TRUE POINT OF BEGINNING.

THENCE, with the center-line of this easement, the following three courses:

N 87°-06'-00"W, a distance of 156.70 feet to a point.

N 1°-47'-00"E, a distance of 132.90 feet to a point.

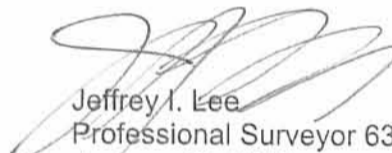
N 19°-27'-11"E, a distance of 216.70 feet to the terminus of this easement.

The basis for bearings is the center-line of Ohio Route 235 at Township Road 293, being S 87°-06'-13"E, and all other bearings are from angles and distances measured in a field survey by Lee Surveying and Mapping Co., Inc. on August 16, 1999 and August 1, 2003.

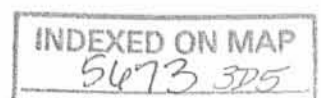


ORIGINAL STAMP IN GREEN

Description prepared by:

  
Jeffrey I. Lee  
Professional Surveyor 6359  
January 28, 2004

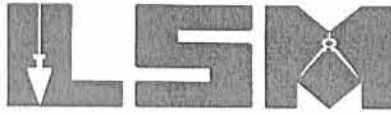
L-3248



# Lee Surveying and Mapping Co., Inc.

Land Surveys • Topography • Subdivisions • Construction Layout

117 N. Madriver St.  
Bellefontaine OH 43311



Phone: (937) 593-7335  
Fax: (937) 593-7444

## FOX INVESTMENTS, LTD UNIT A 0.385 ACRE

Lying in Virginia Military Survey 12277, Stokes Township, Logan County, Ohio.

Being out of the Fox Investments, Ltd 3.232 acre tract as deeded and described in Official Record 520, Page 30 of the Logan County Records of Deeds and being more particularly described as follows:

Beginning at a railroad spike found on the intersection of center-lines of Ohio Route 235 (60 feet wide) and Township Road 293 (60 feet wide).

THENCE, with the center-line of Ohio Route 235, S 87°-06'-13" E, a distance of 329.53 feet to a harrow tooth found.

THENCE, with the center-line of Ohio Route 235, S 87°-02'-49" E, a distance of 439.31 feet to a MAG nail set at the TRUE POINT OF BEGINNING.

THENCE, with the center-line of Ohio Route 235, S 87°-02'-49"E, a distance of 42.00 feet to a MAG nail set.

THENCE, with the west line of the Frances D. Reed 1.77 acre tract (O.R. 313, Pg. 227, Parcel I), S 1°-15'-17" W, a distance of 255.01 feet to a 5/8 inch iron rod set.

THENCE, N 87°-40'-00" W, a distance of 104.35 feet to a 5/8 inch iron rod set.

THENCE, N 19°-27'-11" E, a distance of 168.83 feet to a 5/8 inch iron rod set.

THENCE, with a curve to the left having a central angle of 16°-30'-00", a radius of 166.00 feet, an arc length of 47.80 feet and a chord bearing N 11°-12'-11" E, a distance of 47.64 feet to a 5/8 inch iron rod set.

THENCE, N 2°-57'-11" E, a distance of 47.00 feet to the point of beginning, passing a 5/8 inch iron rod set at 17.00 feet.

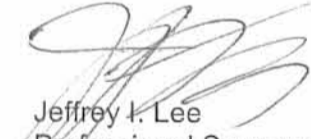
Containing 0.385 acre, of which 0.029 acre is within the highway right-of-way.

The basis for bearings is the center-line of Ohio Route 235 at Township Road 293, being S 87°-06'-13" E, and all other bearings are from angles and distances measured in a field survey by Lee Surveying and Mapping Co., Inc. on August 16, 1999 and August 1, 2003.

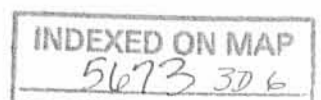
Description prepared by:



ORIGINAL STAMP IN GREEN

  
Jeffrey I. Lee  
Professional Surveyor 6359  
February 10, 2004

L-3248



# Lee Surveying and Mapping Co., Inc.

Land Surveys • Topography • Subdivisions • Construction Layout

117 N. Madriver St.  
Bellefontaine OH 43311



Phone: (937) 593-7335  
Fax: (937) 593-7444

## FOX INVESTMENTS, LTD ADDITIONAL AREA 2.847 ACRES

Lying in Virginia Military Survey 12277, Stokes Township, Logan County, Ohio.

Being the remainder of the Fox Investments, Ltd 3.232 acre tract as deeded and described in Official Record 520, Page 30 of the Logan County Records of Deeds and being more particularly described as follows:

Beginning at a railroad spike found on the intersection of center-lines of Ohio Route 235 (60 feet wide) and Township Road 293 (60 feet wide).

THENCE, with the center-line of Ohio Route 235, S 87°-06'-13" E, a distance of 329.53 feet to a harrow tooth found.

THENCE, with the center-line of Ohio Route 235, S 87°-02'-49" E, a distance of 266.64 feet to a MAG nail set at the TRUE POINT OF BEGINNING.

THENCE, with the center-line of Ohio Route 235, S 87°-02'-49"E, a distance of 172.67 feet to a MAG nail set.

THENCE, S 2°-57'-11"W, a distance of 47.00 feet to a 5/8 inch iron rod set, passing a 5/8 inch iron rod set at 30.00 feet.

THENCE, with a curve to the right, having a central angle of 16°-30'-00", a radius of 166.00 feet, an arc length of 47.80 feet, a chord bearing S 11°-12'-11"W, a distance of 47.64 feet to a 5/8 inch iron rod set.

THENCE, S 19°-27'-11"W, a distance of 168.83 feet to a 5/8 inch iron rod set.

THENCE, S 87°-40'-00"E, a distance of 104.35 feet to a 5/8 inch iron rod set.

THENCE, with the west lines of the Frances D. Reed 1.77 acre tract (O.R. 313, Pg. 227, Parcel I), the Frances D. Reed 1.0 acre tract (O.R. 313, Pg. 227, Tract II), and the Wannemacher Construction 9.69 acre tract (O.R. 253, Pg. 711), S 1°-15'-17"W, a distance of 273.42 feet to a 1/2 inch iron pipe found.

THENCE, with the north line of Kings Landing Allotment No. 9 (Plat Cabinet A, Slide 511), N 87°-07'-13"W, a distance of 311.49 feet to a 5/8 inch iron rod set.

THENCE, with the east lines of the Vicki A. Fay and Bradley D. Fay 2.760 acre tract (O.R. 511, Pg. 124, Tract II), the following three courses:

N 4°-41'-00"E, a distance of 193.64 feet to a 5/8 inch iron rod set.

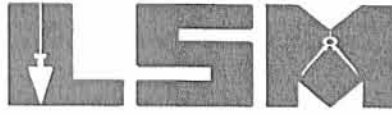
N 34°-15'-05"E, a distance of 82.80 feet to a 5/8 inch iron rod set.

INDEXED ON MAP  
5673 3D7

# Lee Surveying and Mapping Co., Inc.

Land Surveys • Topography • Subdivisions • Construction Layout

117 N. Madriver St.  
Bellefontaine OH 43311



Phone: (937) 593-7335  
Fax: (937) 593-7444

N 9°-55'-09"E, a distance of 266.26 feet to the point of beginning.

Containing 2.847 acres, of which 0.120 acre is within the highway right-of-way.

The basis for bearings is the center-line of Ohio Route 235 at Township Road 293, being S 87°-06'-13" E, and all other bearings are from angles and distances measured in a field survey by Lee Surveying and Mapping Co., Inc. on August 16, 1999 and August 1, 2003.

Description prepared by:



ORIGINAL STAMP IN GREEN

A handwritten signature in black ink, appearing to read 'Jeffrey I. Lee'.

Jeffrey I. Lee  
Professional Surveyor 6359  
March 11, 2004

L-3248



# Lee Surveying and Mapping Co., Inc.

Land Surveys • Topography • Subdivisions • Construction Layout

117 N. Madriver St.  
Bellefontaine OH 43311



Phone: (937) 593-7335  
Fax: (937) 593-7444

**1975-2005 - 30 YEARS OF EXCELLENCE**

**FOX INVESTMENTS, LTD  
UNIT B  
0.470 ACRE**

Lying in Virginia Military Survey 12277, Stokes Township, Logan County, Ohio.

Being out of the Fox Investments, Ltd. 2.847 acre tract as deeded and described in Official Record 745, Page 817 of the Logan County Records of Deeds and being more particularly described as follows:

Beginning at a railroad spike found on the intersection of center-lines of Ohio Route 235 (60 feet wide) and Township Road 293 (60 feet wide).

THENCE, with the center-line of Ohio Route 235, the following two courses:

S 87°-06'-13"E, a distance of 329.53 feet to a harrow tooth found.

S 87°-02'-49"E, a distance of 266.64 feet to a MAG nail set at the TRUE POINT OF BEGINNING.

THENCE, with the center-line of Ohio Route 235, S 87°-02'-49"E, a distance of 140.67 feet to a MAG nail set.

THENCE, S 2°-57'-11"W, a distance of 47.00 feet to a 5/8 inch iron rod set, passing a 5/8 inch iron rod set at 30.00 feet.

THENCE, with a curve to the right, having a central angle of 16°-30'-00", a radius of 134.00 feet, an arc length of 38.59 feet, a chord bearing S 11°-12'-11"W, a chord distance of 38.46 feet to a 5/8 inch iron rod set.

THENCE, S 19°-27'-11"W, a distance of 59.73 feet to a 5/8 inch iron rod set.

THENCE, N 87°-40'-00"W, a distance of 135.77 feet to a 5/8 inch iron rod set.

THENCE, with the east line of the Vicki A. Fay and Bradley D. Fay 2.760 acre tract (O.R. 511, Pg. 124, Tract II), N 9°-55'-09"E, a distance of 144.86 feet to the point of beginning, passing a 5/8 inch iron rod set at 114.64 feet.


Containing 0.470 acre, of which 0.098 acre is within the highway right-of-way.

The basis for bearings is the center-line of Ohio Route 235 at Township Road 293, being S 87°-06'-13"E, and all other bearings are from angles and distances measured in a field survey by Lee Surveying and Mapping Co., Inc. on April 8, 2005.



ORIGINAL STAMP IN GREEN

Description prepared by:

  
Jeffrey I. Lee  
Professional Surveyor 6359  
April 11, 2005

L-3248

INDEXED ON MAP  
5673 4D-1

REV'D 5.2.05 SWM OK

# Lee Surveying and Mapping Co., Inc.

Land Surveys • Topography • Subdivisions • Construction Layout

117 N. Madriver St.  
Bellefontaine OH 43311



Phone: (937) 593-7335  
Fax: (937) 593-7444

**1975-2005 - 30 YEARS OF EXCELLENCE**

**FOX INVESTMENTS, LTD  
ADDITIONAL AREA  
2.377 ACRES**

Lying in Virginia Military Survey 12277, Stokes Township, Logan County, Ohio.

Being the remainder of the Fox Investments, Ltd 2.847 acre tract as deeded and described in Official Record 745, Page 817 of the Logan County Records of Deeds and being more particularly described as follows:

Beginning at a railroad spike found on the intersection of center-lines of Ohio Route 235 (60 feet wide) and Township Road 293 (60 feet wide).

THENCE, with the center-line of Ohio Route 235, the following two courses:

S 87°-06'-13" E, a distance of 329.53 feet to a harrow tooth found.

S 87°-02'-49" E, a distance of 407.31 feet to a MAG nail set at the TRUE POINT OF BEGINNING.

THENCE, with the center-line of Ohio Route 235, S 87°-02'-49"E, a distance of 32.00 feet to a MAG nail set.

THENCE, with the lines of the North Point Landing Condominiums Phase I as platted and recorded in Plat Cabinet B, Slides 88 A & B, the following four courses:

S 2°-57'-11"W, a distance of 47.00 feet to a 5/8 inch iron rod set, passing a 5/8 inch iron rod set at 30.00 feet.

With a curve to the right, having a central angle of 16°-30'-00", a radius of 166.00 feet, an arc length of 47.80 feet, a chord bearing S 11°-12'-11"W, a chord distance of 47.64 feet to a 5/8 inch iron rod set.

S 19°-27'-11"W, a distance of 168.83 feet to a 5/8 inch iron rod set.

S 87°-40'-00"E, a distance of 104.35 feet to a 5/8 inch iron rod set.

THENCE, with the west lines of the Frances D. Reed 1.77 acre tract and 1.0 acre tract (O.R. 313, Pg. 227, Parcel I and II), and the Wannemacher Construction 9.69 acre tract (O.R. 253, Pg. 711), S 1°-15'-17"W, a distance of 273.42 feet to a 1/2 inch iron pipe found.

THENCE, with the north line of Kings Landing Allotment No. 9 (Plat Cabinet A, Slide 511), N 87°-07'-13"W, a distance of 311.49 feet to a 5/8 inch iron rod set.

THENCE, with the east lines of the Vicki A. Fay and Bradley D. Fay 2.760 acre tract (O.R. 511, Pg. 124, Tract II), the following three courses:

N 4°-41'-00"E, a distance of 193.64 feet to a 5/8 inch iron rod set.

N 34°-15'-05"E, a distance of 82.80 feet to a 5/8 inch iron rod set.

INDEXED ON MAP  
5673 4D 2



# Lee Surveying and Mapping Co., Inc.

Land Surveys • Topography • Subdivisions • Construction Layout

117 N. Madriver St.  
Bellefontaine OH 43311



Phone: (937) 593-7335  
Fax: (937) 593-7444

**1975-2005 - 30 YEARS OF EXCELLENCE**

N 9°-55'-09"E, a distance of 121.40 feet to 5/8 inch iron rod set.

THENCE, S 87°-40'-00"E, a distance of 135.77 feet to a 5/8 inch iron rod set.

THENCE, N 19°-27'-11"E, a distance of 59.73 feet to a 5/8 inch iron rod set.

THENCE, with a curve to the left, having a central angle of 16°-30'-00", a radius of 134.00 feet, an arc distance of 38.59 feet, a chord bearing of N 11°-12'-11"E, a chord distance of 38.46 feet to a 5/8 inch iron rod set.

THENCE, N 2°-57'-11"E, a distance of 47.00 feet to the point of beginning, passing a 5/8 inch iron rod set at 17.00 feet.

Containing 2.377 acres, of which 0.022 acre is within the highway right-of-way.

The basis for bearings is the center-line of Ohio Route 235 at Township Road 293, being S 87°-06'-13" E, and all other bearings are from angles and distances measured in a field survey by Lee Surveying and Mapping Co., Inc. on April 8, 2005.



ORIGINAL STAMP IN GREEN

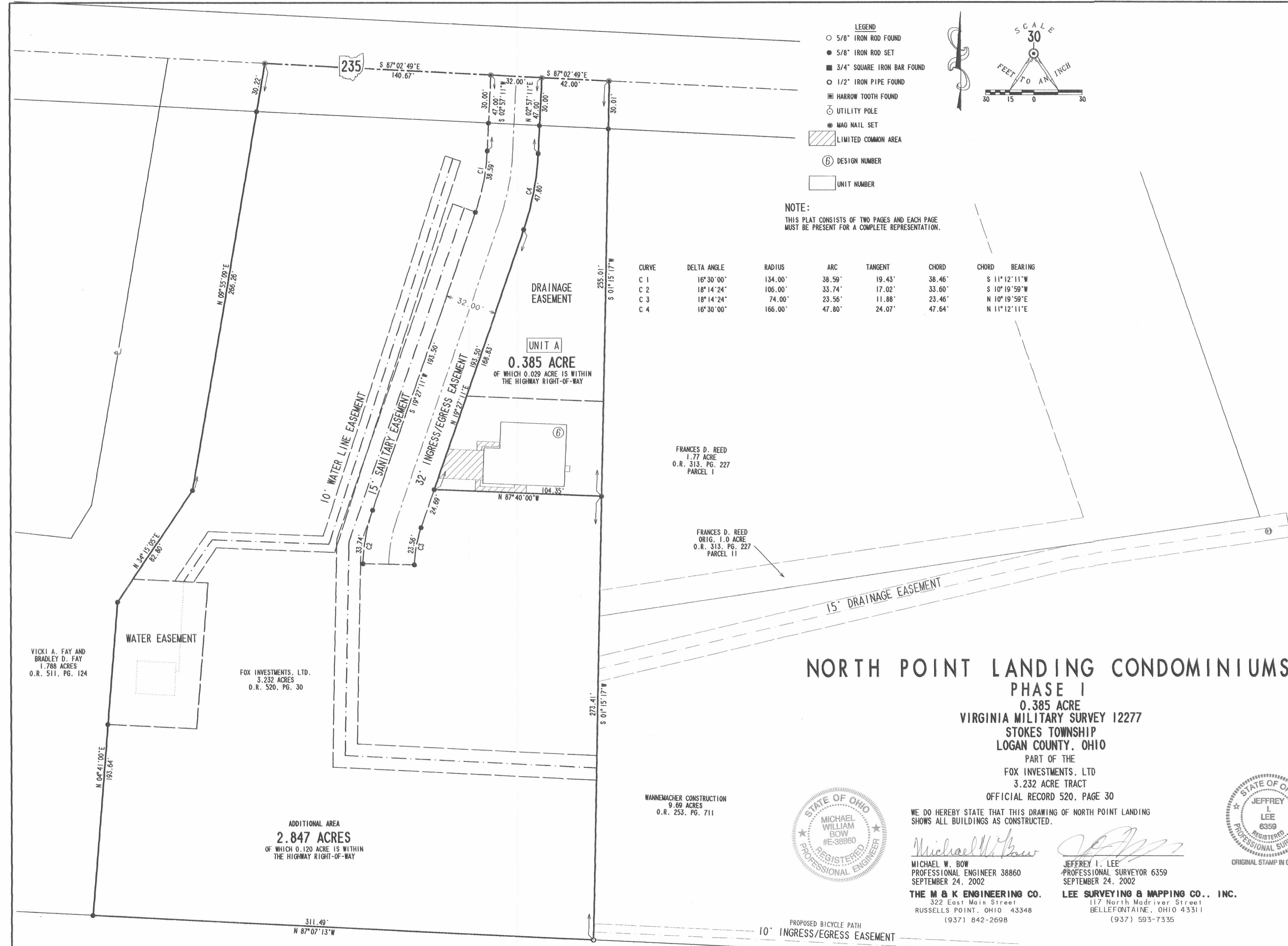
Description prepared by:

A handwritten signature in black ink, appearing to read 'J. Lee'.

Jeffrey I. Lee  
Professional Surveyor 6359  
April 11, 2005

L-3248

INDEXED ON MAP  
5673 42-3



**NORTH POINT LANDING CONDOMINIUMS**

PHASE I  
0.385 ACRE  
VIRGINIA MILITARY SURVEY 12277  
STOKES TOWNSHIP  
LOGAN COUNTY, OHIO  
PART OF THE  
FOX INVESTMENTS, LTD.  
3.232 ACRE TRACT  
OFFICIAL RECORD 520, PAGE 30

WE DO HEREBY STATE THAT THIS DRAWING OF NORTH POINT LANDING SHOWS ALL BUILDINGS AS CONSTRUCTED.



*Michael W. Bow*  
MICHAEL W. BOW  
PROFESSIONAL ENGINEER 38860  
SEPTEMBER 24, 2002  
THE M & K ENGINEERING CO.  
322 East Main Street  
RUSSELLS POINT, OHIO 43348  
(937) 842-2698

*Jeffrey I. Lee*  
JEFFREY I. LEE  
PROFESSIONAL SURVEYOR 6359  
SEPTEMBER 24, 2002  
LEE SURVEYING & MAPPING CO., INC.  
117 North Madriver Street  
BELLEFONTAINE, OHIO 43311  
(937) 593-7335



APPROVED BY THE L.U.C. PLANNING COMMISSION  
THIS 27 DAY OF MARCH, 2004  
*Constance Hanson*  
DIRECTOR, PLANNING COMMISSION  
PRE-APPROVAL *Jan C. Ito* 3-25-04  
PLAT CHECKED *Jan C. Ito* 4-26-04  
TRANSFERRED THIS 26th DAY OF April, 2004.

*Richard E. Godwin*  
AUDITOR, LOGAN COUNTY, OHIO  
RECORDED IN PLAT CABINET B, SLIDE 88A+B  
RECEIVED FOR RECORD AT 1:52 O'CLOCK P.M.  
THIS 26th DAY OF April, 2004  
*Linda Hanson*  
RECORDER, LOGAN COUNTY, OHIO

KINGS LANDING ALLOTMENT NO. 9  
PLAT CABINET A, SLIDE 511

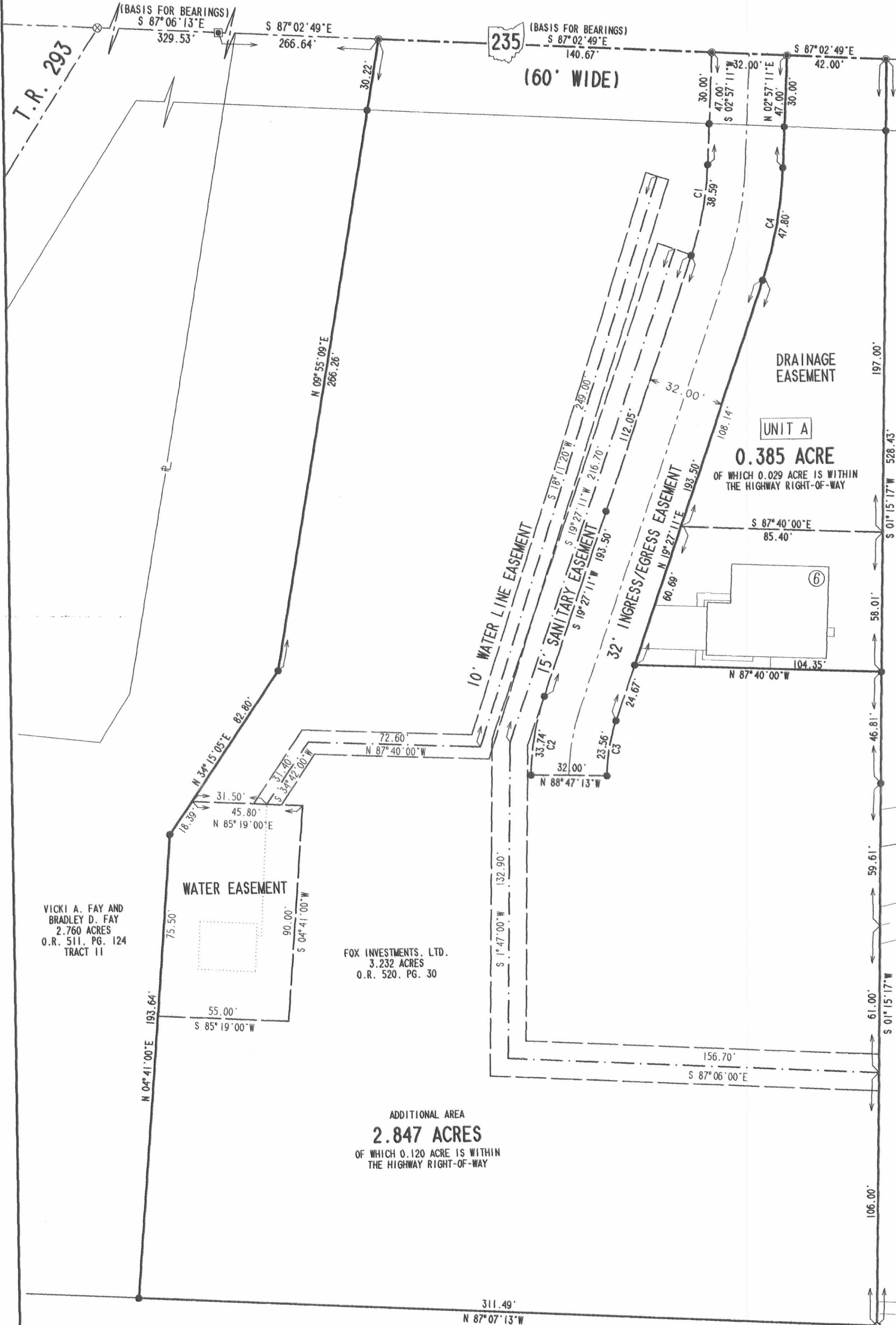
KING AVENUE (50')

2 WORKING DAYS  
BEFORE YOU DIG  
CALL TOLL FREE 800-362-2764  
OHIO UTILITIES PROTECTION SERVICE.

# NORTH POINT LANDING CONDOMINIUMS PHASE I

2  
2

VIRGINIA MILITARY SURVEY 12277 - STOKES TOWNSHIP - LOGAN COUNTY - OHIO  
ALL OF THE FOX INVESTMENTS, LTD 3.232 ACRE TRACT - OFFICIAL RECORD 520, PAGE 30



CURVE	DELTA ANGLE	RADIUS	ARC	TANGENT	CHORD	CHORD BEARING
C 1	16°30'00"	134.00'	38.59'	19.43'	38.46'	S 11°12'11"W
C 2	18°14'24"	106.00'	33.74'	17.02'	33.60'	S 10°19'59"E
C 3	18°14'24"	74.00'	23.56'	11.88'	23.46'	N 10°19'59"E
C 4	16°30'00"	166.00'	47.80'	24.07'	47.64'	N 11°12'11"E

**LEGEND**

- 5/8" IRON ROD FOUND
- 5/8" IRON ROD SET
- 3/4" SQUARE IRON BAR FOUND
- 1/2" IRON PIPE FOUND
- ⊕ HARROW TOOTH FOUND
- UTILITY POLE
- MAG NAIL SET
- ⊗ RAILROAD SPIKE FOUND
- ⑥ DESIGN NUMBER
- UNIT NUMBER

**NOTE:**  
THIS PLAT CONSISTS OF TWO PAGES AND EACH PAGE MUST BE PRESENT FOR A COMPLETE REPRESENTATION.

**SCALE**  
30  
FEET TO AN INCH

FRANCES D. REED  
1.77 ACRES  
O.R. 313, PG. 227  
PARCEL I

FRANCES D. REED  
ORIG. 1.0 ACRE  
O.R. 313, PG. 227  
PARCEL 11

WANNEMACHER CONSTRUCTION  
9.69 ACRES  
O.R. 253, PG. 711

VICKI A. FAY AND  
BRADLEY D. FAY  
2.760 ACRES  
O.R. 511, PG. 124  
TRACT 11

FOX INVESTMENTS, LTD.  
3.232 ACRES  
O.R. 520, PG. 30

ADDITIONAL AREA  
2.847 ACRES  
OF WHICH 0.120 ACRE IS WITHIN  
THE HIGHWAY RIGHT-OF-WAY

KINGS LANDING ALLOTMENT NO. 9  
PLAT CABINET A, SLIDE 511

KING AVENUE (50')

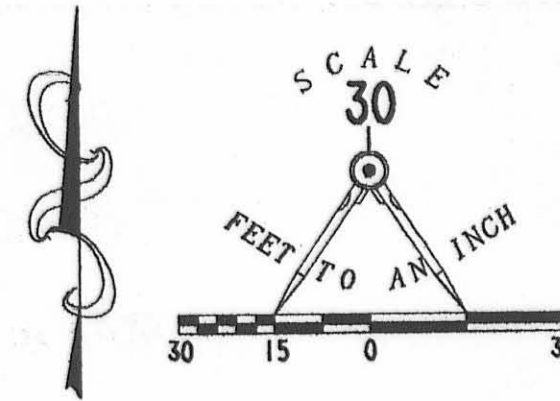
2 WORKING DAYS  
**BEFORE YOU DIG**  
CALL TOLL FREE 800-362-2764  
OHIO UTILITIES PROTECTION SERVICE.

**NOTE:**  
THIS PLAT CONSISTS OF TWO PAGES AND EACH PAGE MUST BE PRESENT FOR A COMPLETE REPRESENTATION.

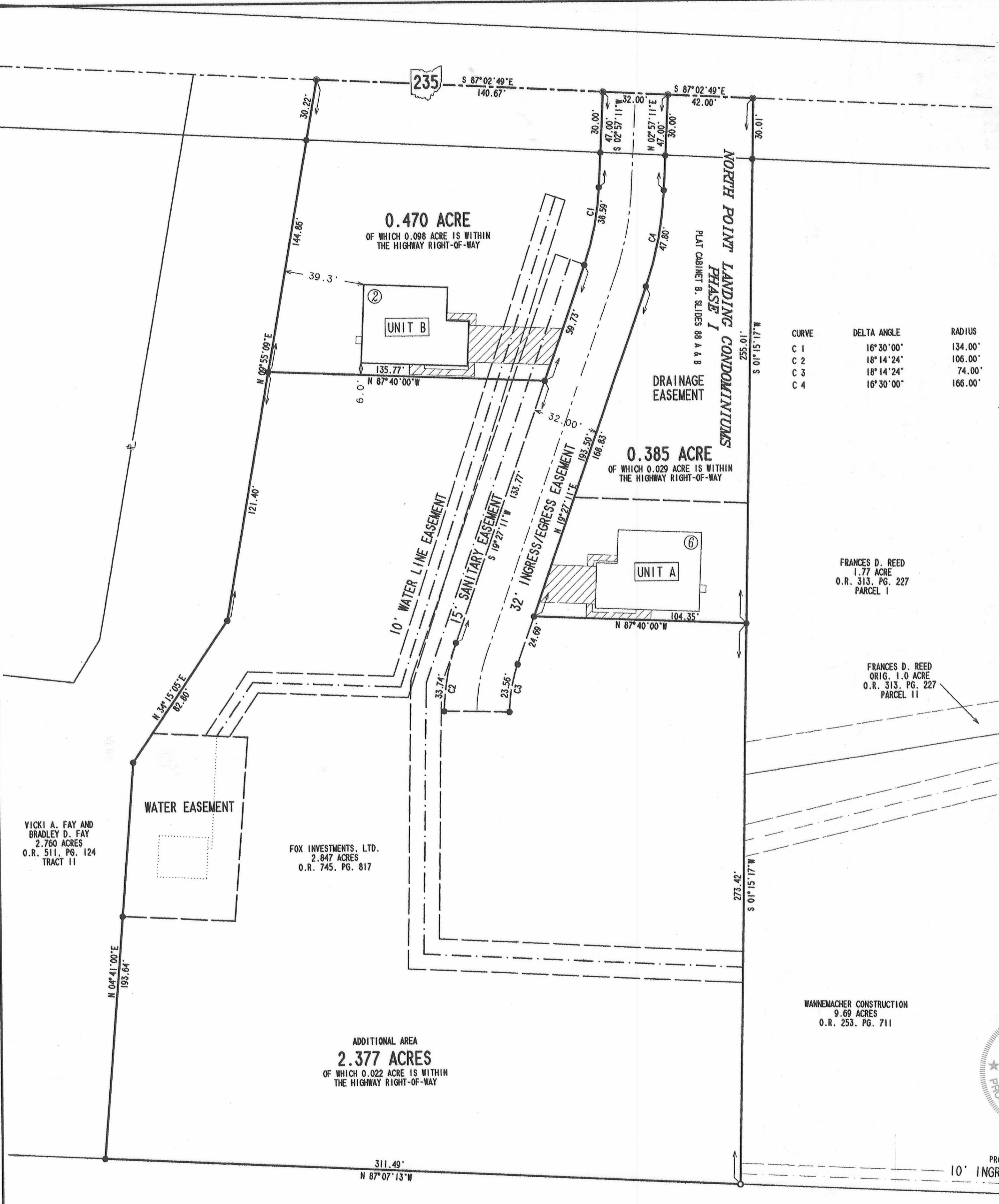
COPYRIGHT 2004 BY:  
**LEE SURVEYING & MAPPING CO., INC.**  
117 North Madriver Street  
BELLEFONTAINE, OHIO 43311  
(937) 593-7335  
DNV/KSR D412 BFOXD04 BFOXTOP0 JOB L-3246-1

J-309

- LEGEND**
- 5/8" IRON ROD FOUND
  - 5/8" IRON ROD SET
  - 3/4" SQUARE IRON BAR FOUND
  - 1/2" IRON PIPE FOUND
  - ⊠ HARROW TOOTH FOUND
  - UTILITY POLE
  - MAG NAIL SET
  - ▨ LIMITED COMMON AREA
  - Ⓟ DESIGN NUMBER
  - UNIT NUMBER



CURVE	DELTA ANGLE	RADIUS	ARC	TANGENT	CHORD	CHORD BEARING
C 1	16° 30' 00"	134.00'	38.59'	19.43'	38.46'	S 11° 12' 11" W
C 2	18° 14' 24"	106.00'	33.74'	17.02'	33.60'	S 10° 19' 59" W
C 3	18° 14' 24"	74.00'	23.56'	11.88'	23.46'	N 10° 19' 59" E
C 4	16° 30' 00"	166.00'	47.80'	24.07'	47.64'	N 11° 12' 11" E



FRANCES D. REED  
1.77 ACRE  
O.R. 313, PG. 227  
PARCEL I

FRANCES D. REED  
ORIG. 1.0 ACRE  
O.R. 313, PG. 227  
PARCEL II

WANNEMACHER CONSTRUCTION  
9.69 ACRES  
O.R. 253, PG. 711



**ENGINEER'S CERTIFICATION:**

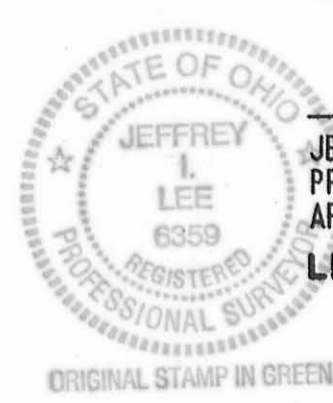
I DO HEREBY CERTIFY THAT THIS DRAWING ACCURATELY REFLECTS THE BUILDING "AS-BUILT OR CONSTRUCTED".

*Michael W. Bow*  
MICHAEL W. BOW  
PROFESSIONAL ENGINEER 38860  
APRIL 20, 2005

THE M & K ENGINEERING CO.  
322 East Main Street  
RUSSELLS POINT, OHIO 43348  
(937) 842-2698

**SURVEYOR'S CERTIFICATION:**

I DO HEREBY CERTIFY THAT THIS SURVEY OF NORTH POINT LANDING CONDOMINIUMS PHASE II ACCURATELY REFLECTS THE LOCATION OF IMPROVEMENTS AND RECORDED EASEMENTS.



*Jeffrey I. Lee*  
JEFFREY I. LEE  
PROFESSIONAL SURVEYOR 6359  
APRIL 20, 2005

LEE SURVEYING & MAPPING CO., INC.  
117 North Modriver Street  
BELLEFONTAINE, OHIO 43311  
(937) 593-7335

PROPOSED BICYCLE PATH  
10' INGRESS/EGRESS EASEMENT

**NORTH POINT LANDING CONDOMINIUMS  
PHASE II**

0.470 ACRE  
VIRGINIA MILITARY SURVEY 12277  
STOKES TOWNSHIP  
LOGAN COUNTY, OHIO  
PART OF THE  
FOX INVESTMENTS, LTD  
2.847 ACRE TRACT  
OFFICIAL RECORD 745, PAGE 817

VICKI A. FAY AND  
BRADLEY D. FAY  
2.760 ACRES  
O.R. 511, PG. 124  
TRACT II

FOX INVESTMENTS, LTD.  
2.847 ACRES  
O.R. 745, PG. 817

ADDITIONAL AREA  
2.377 ACRES  
OF WHICH 0.022 ACRE IS WITHIN  
THE HIGHWAY RIGHT-OF-WAY

KINGS LANDING ALLOTMENT NO. 9  
PLAT CABINET A, SLIDE 511

**NOTES:**

1. THIS PLAT CONSISTS OF TWO PAGES AND EACH PAGE MUST BE PRESENT FOR A COMPLETE REPRESENTATION.
2. EASEMENTS SHOWN ARE AS PROVIDED BY DEVELOPER. THE SURVEYOR DID NOT SEARCH FOR ADDITIONAL EASEMENTS.
3. THE WORD "CERTIFY" IS INTENDED TO BE AS DEFINED IN OHIO ADMINISTRATIVE CODE 4733-35-04(C).
4. BUILDING HEIGHT FROM PEAK OF ROOF TO GROUND FOR UNIT B IS 18.8'.

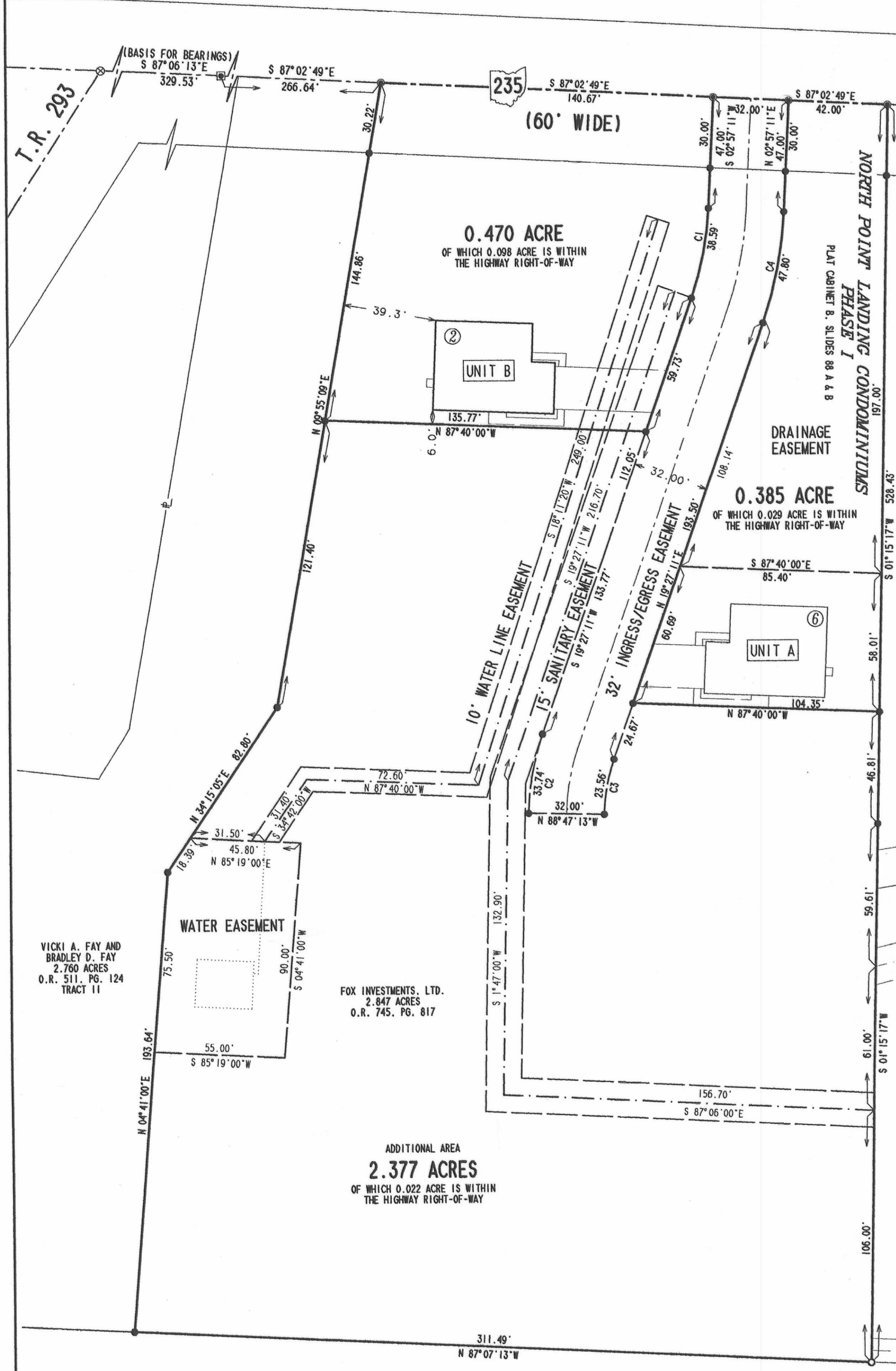
APPROVED BY THE L.U.C. PLANNING COMMISSION  
THIS 25<sup>th</sup> DAY OF May, 2005.  
*Jennifer Hanson*  
DIRECTOR, PLANNING COMMISSION  
PRE-APPROVAL *Jan C. Lee* 5-26-05  
PLAT CHECKED *Jan C. Lee* 5-26-05  
TRANSFERRED THIS 26<sup>th</sup> DAY OF May, 2005.

*Michael E. Godwin*  
AUDITOR, LOGAN COUNTY, OHIO  
RECORDED IN PLAT CABINET B, SLIDE 97A, 97B  
RECEIVED FOR RECORD AT 10:32 O'CLOCK A.M.  
THIS 26<sup>th</sup> DAY OF May, 2005.  
*Linda Hanson*  
RECORDER, LOGAN COUNTY, OHIO

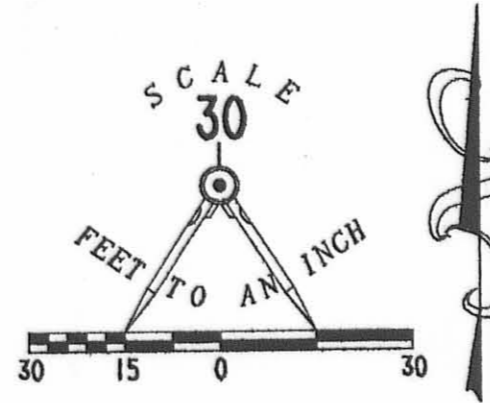
# NORTH POINT LANDING CONDOMINIUMS PHASE II

2  
2

VIRGINIA MILITARY SURVEY 12277 - STOKES TOWNSHIP - LOGAN COUNTY - OHIO  
PART OF THE FOX INVESTMENTS, LTD 2.847 ACRE TRACT - OFFICIAL RECORD 745, PAGE 817



CURVE	DELTA ANGLE	RADIUS	ARC	TANGENT	CHORD	CHORD BEARING
C 1	16°30'00"	134.00'	38.59'	19.43'	38.46'	S 11°12'11"W
C 2	18°14'24"	106.00'	33.74'	17.02'	33.60'	S 10°19'59"W
C 3	18°14'24"	74.00'	23.56'	11.88'	23.46'	N 10°19'59"E
C 4	16°30'00"	166.00'	47.80'	24.07'	47.64'	N 11°12'11"E



- LEGEND
- 5/8" IRON ROD FOUND
  - 5/8" IRON ROD SET
  - 3/4" SQUARE IRON BAR FOUND
  - 1/2" IRON PIPE FOUND
  - ⊠ HARROW TOOTH FOUND
  - ⊕ UTILITY POLE
  - MAG NAIL SET
  - ⊗ RAILROAD SPIKE FOUND
  - ⑥ DESIGN NUMBER
  - UNIT NUMBER

NOTE:  
THIS PLAT CONSISTS OF TWO PAGES AND EACH PAGE  
MUST BE PRESENT FOR A COMPLETE REPRESENTATION.

FRANCES D. REED  
1.77 ACRE  
O.R. 313, PG. 227  
PARCEL I

FRANCES D. REED  
ORIG. 1.0 ACRE  
O.R. 313, PG. 227  
PARCEL II

WANNEMACHER CONSTRUCTION  
9.69 ACRES  
O.R. 253, PG. 711

VICKI A. FAY AND  
BRADLEY D. FAY  
2.760 ACRES  
O.R. 511, PG. 124  
TRACT II

FOX INVESTMENTS, LTD.  
2.847 ACRES  
O.R. 745, PG. 817

ADDITIONAL AREA  
2.377 ACRES  
OF WHICH 0.022 ACRE IS WITHIN  
THE HIGHWAY RIGHT-OF-WAY

KINGS LANDING ALLOTMENT NO. 9  
PLAT CABINET A, SLIDE 511

2 WORKING DAYS  
BEFORE YOU DIG  
CALL TOLL FREE 800-362-2764  
OHIO UTILITIES PROTECTION SERVICE.

COPYRIGHT 2005 BY:  
LEE SURVEYING & MAPPING CO., INC.  
117 North Madriver Street  
BELLEFONTAINE, OHIO 43311  
(937) 593-7335  
KSR D0405 3248045 BFOXTOP0.ASC L-3248-1

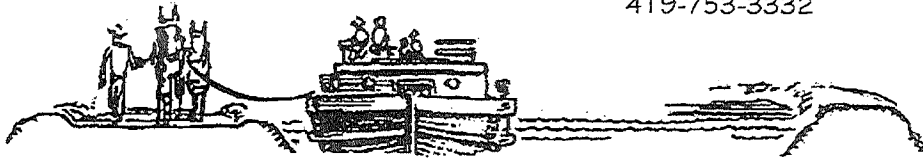
KING AVENUE (50')

9-11-2023



Lock Two Surveying, LLP.  
5166 Lock Two Rd.  
New Bremen, Oh 45869  
419-753-3332

Cell: Jenny Saintignon 419-733-9606  
Chris Harmon P.S. 419-733-9607



**KCK LAND WORKS, LLC. SURVEY  
TRACT 1  
0.240 ACRES**

SITUATE IN VIRGINIA MILITARY SURVEY 12277, STOKES TOWNSHIP, LOGAN COUNTY, OHIO AND BEING A PART OF A 2.377 ACRE TRACT OF LAND OWNED BY KCK LAND WORKS LLC AS DEEDED AND DESCRIBED IN OFFICIAL RECORD 1099 PAGE 114 TRACT II OF THE LOGAN COUNTY RECORDS OF DEEDS AND BEING MORE PARTICULARLY DESCRIBED AS FOLLOWS:

Beginning for reference at a railroad spike found at the intersection of the centerlines of State Route 235 and Township Road 293, North 81°18'51" East, 329.53 feet to a harrow tooth found;

Thence, with the centerline of State Route 235, North 81°22'15" East, 481.41 to a Mag Nail set at the northwest corner of a 1.770 acre tract of land owned by Francis D. Reed as recorded in Official Record 313 Page 227 parcel 1, passing for reference at 266.68 feet a Mag Nail set;

Thence, with the west line of said 1.770 acre tract and the east line of Unit A of North Point Landing Condominiums Phase I as recorded in Plat Cabinet B Slide 88A & B, South 10°17'24" East, 255.01 feet to an iron pin set at the southeast corner of said Unit A owned by Joel M. Phillips as recorded in Official Record 1282, Page 974, said iron pin marking the **True Point of Beginning** of the tract herein described;

Thence, continuing with the west line of said 1.770 acre tract, the west line of a 1.0 acre tract of land owned by Francis D. Reed as recorded in Official Record 313 Page 227, Parcel 2 and the west line of a 9.69 acre tract of land owned by KCK Land Works, LLC as recorded in Official Record 1099 Page 114, South 10°17'24" East, 91.20 feet to an iron pin set;

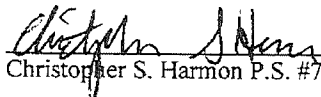
Thence, with new division lines the following 4 lines:

1. South 79°42'36" West, 115.51 feet to an iron pin set
2. North 10°22'12" West, 46.49 feet to an iron pin set in the east line of a 32.00 foot ingress / egress easement as recorded in Plat Cabinet B Slide 88A & B;
3. continuing with the east line of said easement along a curve to the right having a Delta Angle of 18°14'17", Radius 74.00 feet, Arc Length of 23.56 feet with a Long Chord Bearing North 01°15'00" West, 23.46 feet to an iron pin set;
4. continuing with the east line of said easement, North 07°52'15" East, 24.67 feet to an iron pin set at the southwest corner of aforesaid said Unit A;

Thence, with the south line of said Unit A, North 80°45'00" East, 104.22 feet to the **True Point of Beginning**, containing 0.240 acres more or less and being subject to all legal rights of way, easements, agreements and restrictions of record.

Bearings are based upon the Ohio Department of Transportation V.R.S., Ohio State Plane North Zone 3401, NAD 83(2011 Adj.). The survey records referenced are all recorded in the Logan County Tax Map Office. Pins noted as set are 5/8" x 30" rebar with pink plastic caps stamped "Lock-Two 7988".

The above description was prepared by Lock-Two Surveying, LLP from a survey performed By Christopher S. Harmon, Professional Surveyor #7988 in August, 2023 and being filed at the Logan County Tax Map Office.

  
Christopher S. Harmon P.S. #7988



9/11/23  
Date

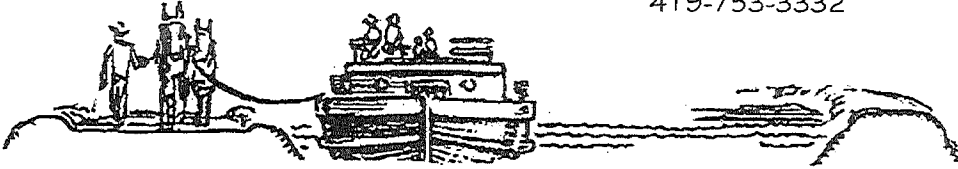
INDEXED ON MAP  
5613

9-11-2023



Lock Two Surveying, LLP.  
5166 Lock Two Rd.  
New Bremen, Oh 45869  
419-753-3332

Cell: Jenny Saintignon 419-733-9606  
Chris Harmon P.S. 419-733-9607



**KCK LAND WORKS, LLC. SURVEY  
TRACT 2  
0.380 ACRES**

SITUATE IN VIRGINIA MILITARY SURVEY 12277, STOKES TOWNSHIP, LOGAN COUNTY, OHIO AND BEING A PART OF A 2.377 ACRE TRACT OF LAND OWNED BY KCK LAND WORKS LLC AS DEEDED AND DESCRIBED IN OFFICIAL RECORD 1099 PAGE 114 TRACT II OF THE LOGAN COUNTY RECORDS OF DEEDS AND BEING MORE PARTICULARLY DESCRIBED AS FOLLOWS:

Beginning for reference at a railroad spike found at the intersection of the centerlines of State Route 235 and Township Road 293, North 81°18'51" East, 329.53 feet to a harrow tooth found;

Thence, with the centerline of State Route 235, North 81°22'15" East, 266.68 feet to a Mag Nail set at the northeast corner of a 2.760 acre tract of land owned by Tarry A. Crumley as recorded in Official Record 1211 Page 226, Tract II and the west line of Unit B of North Point Landing Condominiums Phase II as recorded in Plat Cabinet B Slide 97 A&B owned by Mark W. Quesenberry as recorded in Official Record Official Record 1182 Page 861;

Thence, with east line of said 2.760 acre tract, South 01°36'01" East, 144.86 feet to an iron pin set at the southwest corner of said Unit B, said iron pin also marking the **True Point of Beginning** of the tract herein described;

Thence, with the south line of said Unit B, North 80°45'51" East, 135.95 feet to the west line of a 32.00 feet wide ingress / egress easement as recorded in North Point Landing Condominiums Phase I as recorded in Plat Cabinet B Slide 88 A&B;

Thence, with the west line of said ingress / easement and new division lines the following 2 courses:

1. South 07°52'15" West, 133.77 feet to an iron pin set;
2. along a curve to the left, having a Delta Angle of 06°22'59", Radius of 106.00 feet, Arc Length of 11.81 feet with a Long Chord Bearing South 04°40'45" West, 11.80 feet to an iron pin set;

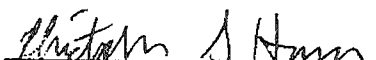
Thence, with a new division line, South 87°17'35" West, 114.32 feet to an iron pin set in the east line of said 2.760 acre tract;

Thence, with the east line of said 2.760 acre tract, North 22°28'37" East, 7.01 feet to an iron pin set;

Thence, continuing with east line of said 2.760 acre tract, North 01°36'01" West, 121.43 feet to the **True Point of Beginning** containing 0.380 acres more or less and being subject to all legal rights of way, easements, agreements and restrictions of record.

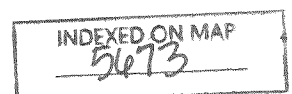
Bearings are based upon the Ohio Department of Transportation V.R.S., Ohio State Plane North Zone 3401, NAD 83(2011 Adj.). The survey records referenced are all recorded in the Logan County Tax Map Office. Pins noted as set are 5/8" x 30" rebar with pink plastic caps stamped "Lock-Two 7988".

The above description was prepared by Lock-Two Surveying, LLP from a survey performed By Christopher S. Harmon, Professional Surveyor #7988 in August, 2023 and being filed at the Logan County Tax Map Office.

  
Christopher S. Harmon P.S. #7988

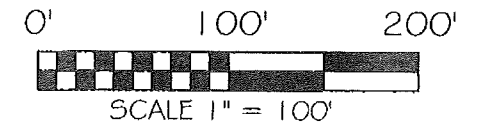
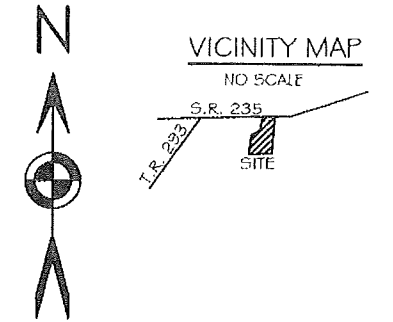


9/11/23  
Date



9-11-2023  
 APPROVED

KCK LAND WORKS, LLC. SURVEY  
 VIRGINIA MILITARY SURVEY 12277  
 STOKES TWP., LOGAN CO., OHIO  
 BEING PART OF THE KCK LAND WORKS, LLC  
 2.377 ACRE TRACT  
 OFFICIAL RECORD 1099 PAGE 114



BASIS OF BEARING: BEARINGS ARE BASED UPON THE OHIO DEPARTMENT OF TRANSPORTATION V.R.S. NAD 83(2011), OHIO STATE PLANE NORTH ZONE 3041, GEIOD 12A GROUND DISTANCES USED.

LEGEND

- 5/8x30" IRON PIN (SET) WPINK PLASTIC CAP STAMPED "LOCK TWO 7988"
- MAG NAIL (SET)
- IRON PIN (FOUND W/LEE CAP UNLESS NOTED)
- ⊙ IRON PIPE (FOUND)
- ⊗ RAILROAD SPIKE (FOUND)
- ◇ HARROW TOOTH (FOUND)
- \* NEW DIVISION LINE
- E CENTERLINE 10 FOOT WATERLINE EASEMENT

SURVEY REFERENCES

RECORDER'S OFFICE CAB. B SLIDE 88  
 CAB. A SLIDE 97  
 P.B. 6F PG. 25  
 MAP 3584 1P, 2P & 3P  
 MAP 5673 2P

F.E.M.A.

FLOOD INSURANCE NOTE: BY GRAPHICS PLOTTING ONLY, THIS PROPERTY IS IN ZONE C OF THE FLOOD INSURANCE RATE MAP, NO. 390772 0025C EFFECTIVE DATE OF MAY 15, 1985 EXACT DESIGNATIONS CAN ONLY BE DETERMINED BY AN ELEVATION CERTIFICATE. BASED ON THE ABOVE INFORMATION, THIS PROPERTY NOT IN A SPECIAL FLOOD HAZARD AREA.

INDEXED ON MAP  
 5673

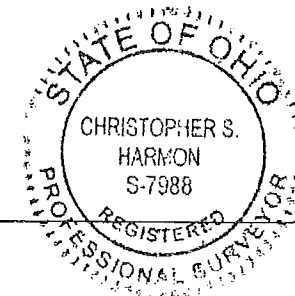
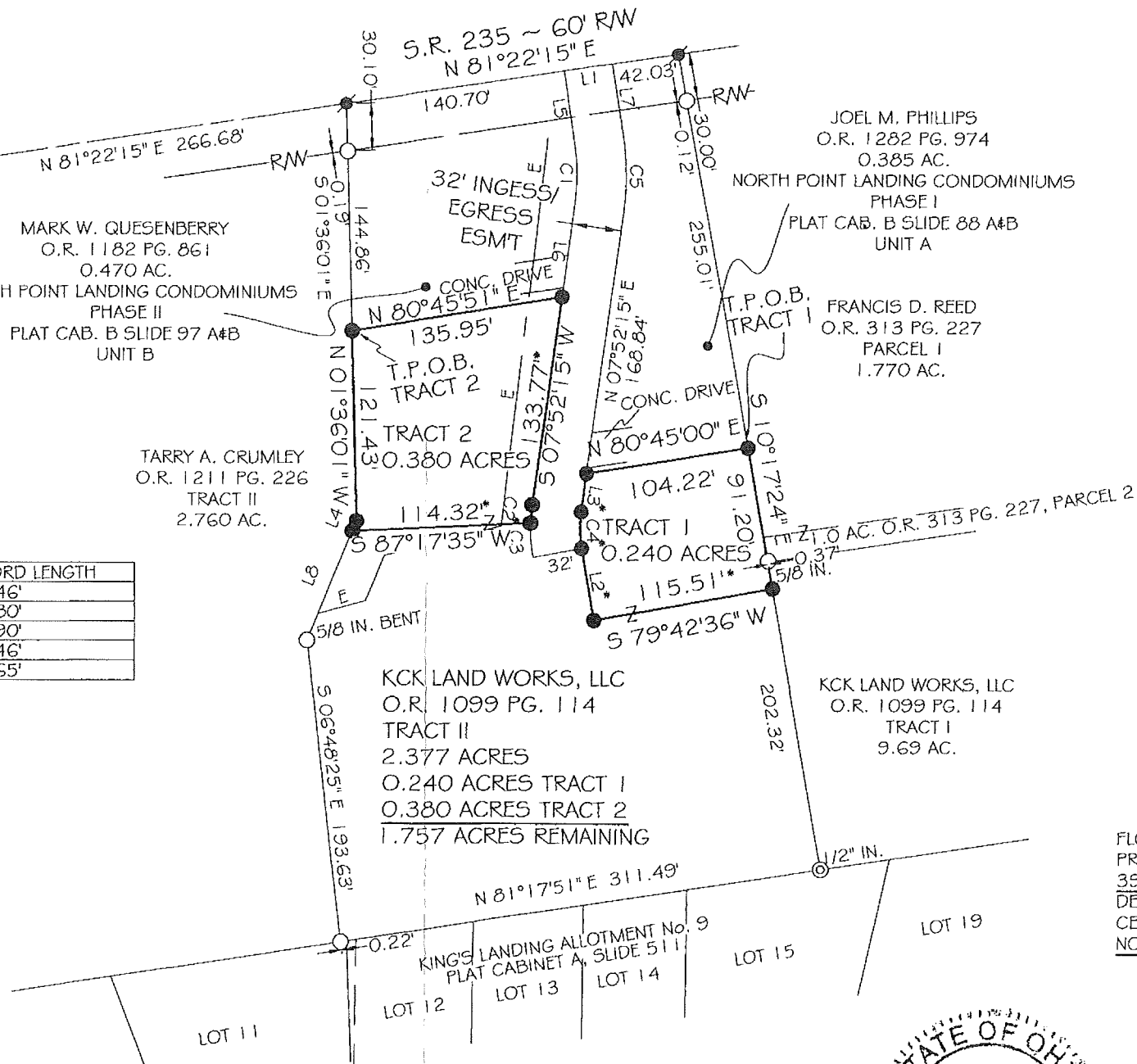
LOCK-TWO SURVEYING  
 5166 LOCK TWO RD. NEW BREMEN, OH  
 419-753-3332



#23049

CURVE	DELTA ANGLE	RADIUS	ARC LENGTH	CHORD BEARING	CHORD LENGTH
C1	16°30'00"	134.01'	38.59'	S 00°22'45" E	38.46'
C2	06°22'59"	106.00'	11.81'	S 04°40'45" W	11.80'
C3	11°51'25"	106.00'	21.94'	S 04°26'27" E	21.90'
C4	18°14'17"	74.00'	23.56'	N 01°15'00" W	23.46'
C5	16°30'05"	166.01'	47.81'	N 00°22'43" W	47.65'

LINE	BEARING	DISTANCE
L1	S 81°22'15" W	32.00'
L2	N 10°22'12" W	46.49'
L3	N 07°52'15" E	24.67'
L4	N 22°28'37" E	7.01'
L5	S 08°37'45" E	47.00'
L6	S 07°52'15" W	59.73'
L7	N 08°37'45" W	47.00'
L8	S 22°28'37" W	78.43'



*Christopher S. Harmon*  
 CHRISTOPHER S. HARMON P.S. #7988  
 DATE 9/11/23

SURVEY NOTE:  
 I HEREBY STATE THAT THIS IS A TRUE AND ACCURATE SURVEY AS PERFORMED BY MYSELF. ALL ADJOINING OWNERS, MONUMENTS AND THERE CONDITION ARE CURRENT AS OF THE TIME THE FIELD WORK WAS PERFORMED IN AUGUST, 2023 AND DONE WITHOUT THE BENEFIT OF A TITLE SEARCH.

NOTE: TRACT 1 & 2 ARE NOT TO BE BUILDING LOTS. THEY ARE INTENDED TO BE ADD TO ONLY PARCELS FOR THE PHILLIPS AND QUESENBERY TRACTS.