

REFERENCE:

THOMAS ADDITION No. 1
 PLAT BOOK 3-C PAGE 39.

(5881) 1P

SURVEYED AND PLATTED BY:

DANIEL E. GILBERT, P.S.
 REG. SUR. No. 5402
 1041 N. MAIN ST.
 BELLEFONTAINE, OHIO 43311

INDEXED ON MAP

HARRY BOWMAN SURVEY
 LOTS 20, 39, 40
 THOMAS ADDITION No 1
 CHIPPEWA PARK
 V.M.S. No. 12276
 STOKES TOWNSHIP
 LOGAN COUNTY, OHIO
 FEBRUARY 28, 1976

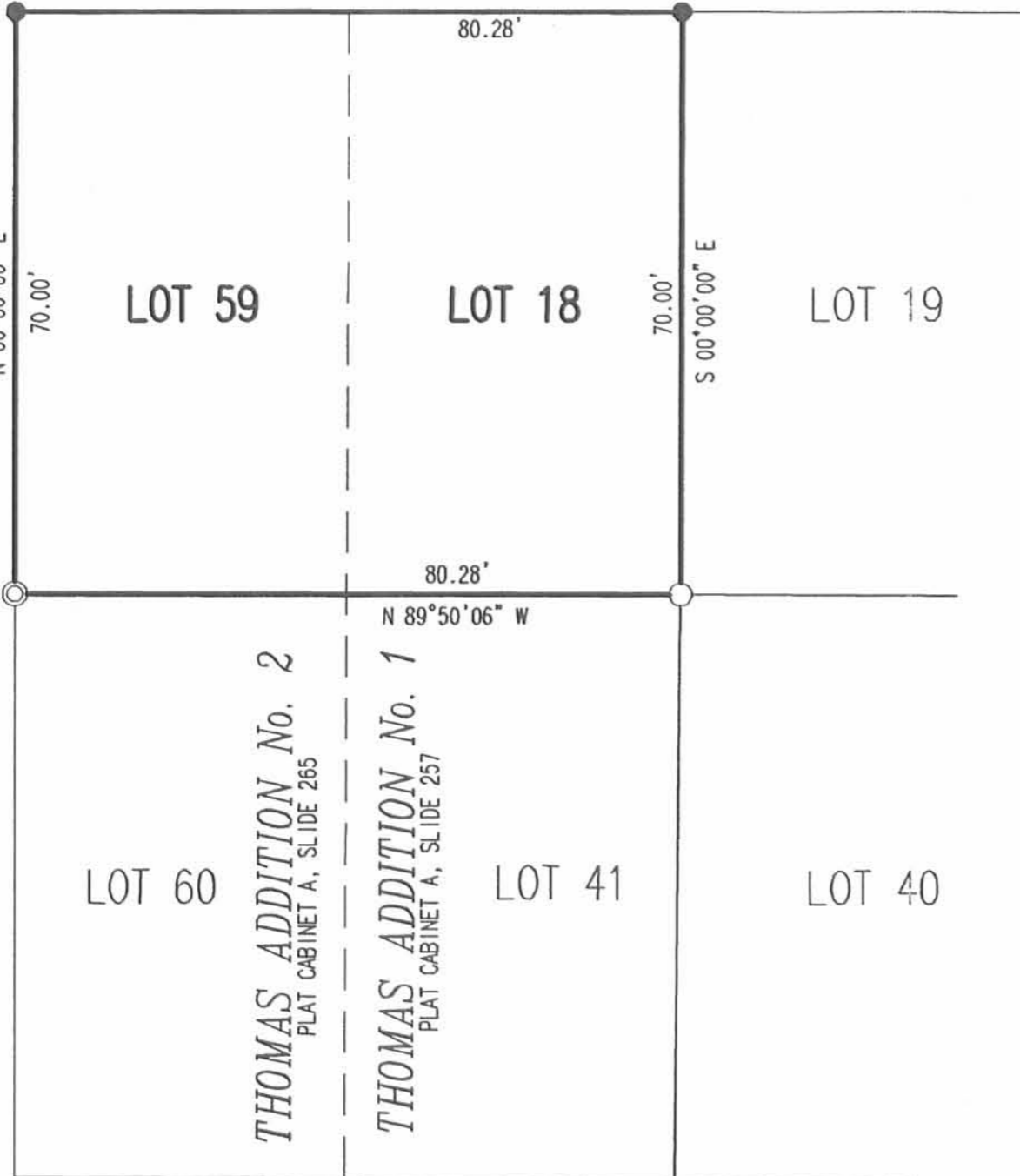
SCALE: 1"=20'

REV'D 6-15-06 SMY OK

SEMINOLE PATH (35 FEET WIDE)

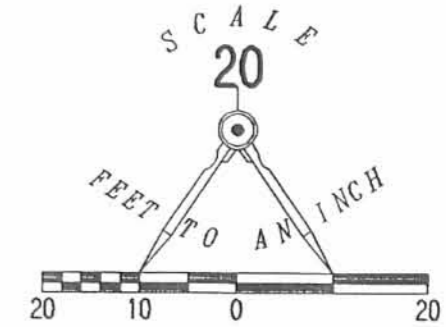
THOMAS DRIVE (20 FEET WIDE)

BASIS FOR BEARINGS
N 00°00'00" E



LEGEND

- 5/8 INCH IRON ROD SET
- 5/8 INCH IRON ROD FOUND
- ⊙ 3/4 INCH IRON PIPE FOUND



A RETRACEMENT SURVEY OF
 LOT 59
 THOMAS ADDITION No. 2
 PLAT CABINET A, SLIDE 265
 LOT 18
 THOMAS ADDITION No. 1
 PLAT CABINET A, SLIDE 257
 VIRGINIA MILITARY SURVEY 12276
 STOKES TOWNSHIP
 LOGAN COUNTY, OHIO

SURVEYED BY:

[Signature]
 JEFFREY I. LEE
 PROFESSIONAL SURVEYOR 6359
 JUNE 12, 2006



ORIGINAL STAMP IN GREEN

COPYRIGHT 2006 BY:
LEE SURVEYING & MAPPING CO., INC.
 117 North Modriver Street
 BELLEFONTAINE, OHIO 43311
 (937) 593-7335

ADW D0606 4263066 L-4263066-3

2 WORKING DAYS
BEFORE YOU DIG
 CALL TOLL FREE **800-362-2764**
 OHIO UTILITIES PROTECTION SERVICE

INDEXED ON MAP
 5881 2P