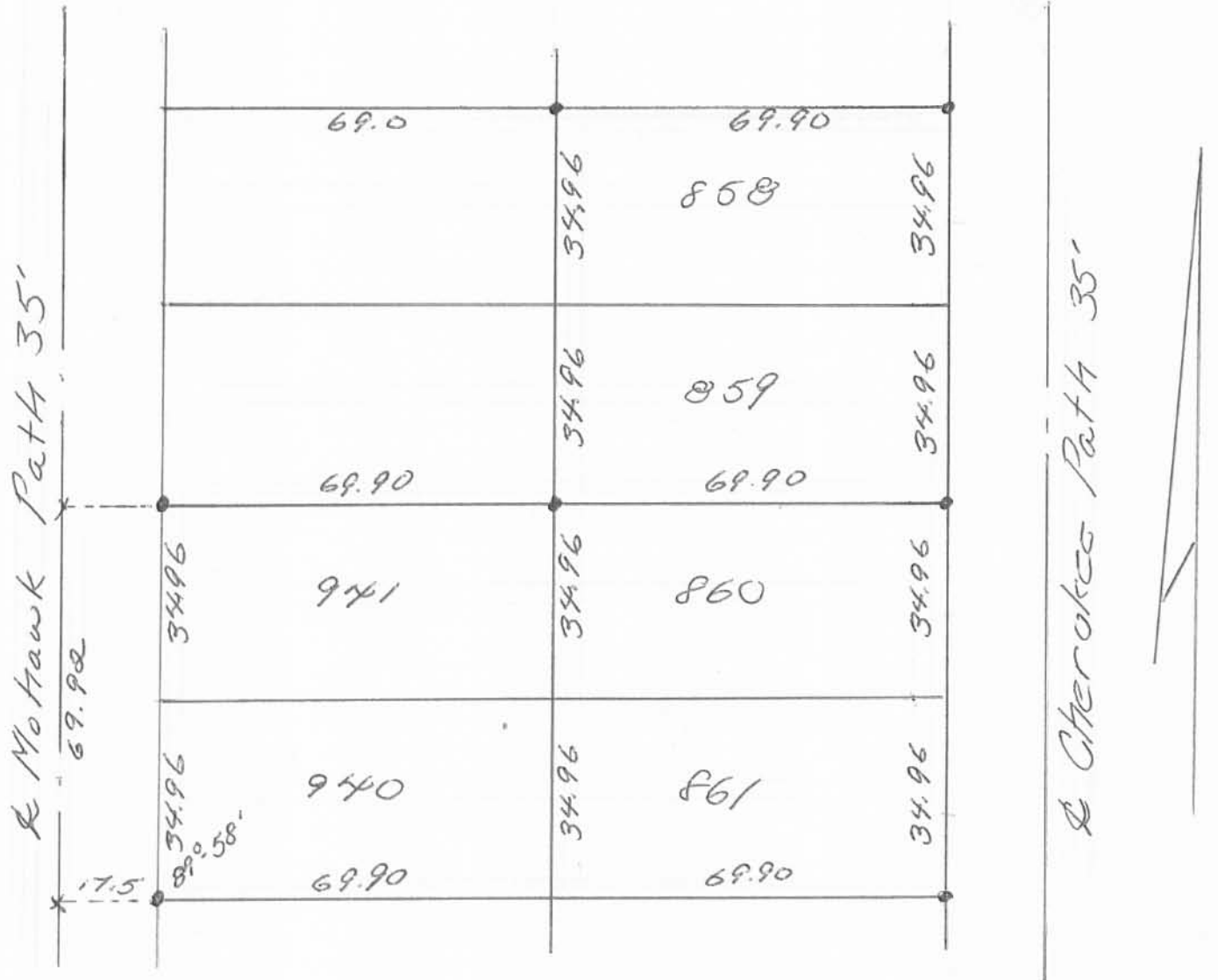


ROLLINS SURVEY - LOTS 858, 859, 860, 861, 940 & 941  
 CHIPPEWA PARK #1; STOKES TWP.

LOGAN CO., OHIO - • DENOTES IRONS

1" = 30'

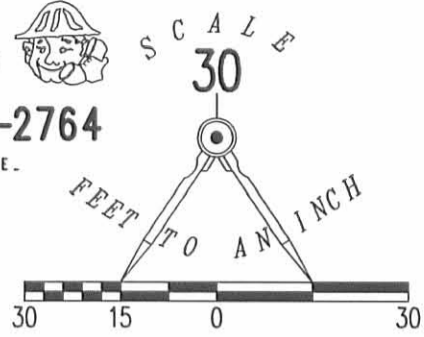


Owen K. Stirk  
 Surveyor 4211  
 6-29-72

6144 1P

INDEXED ON MAP

2 WORKING DAYS  
**BEFORE YOU DIG**  
CALL TOLL FREE **800-362-2764**  
OHIO UTILITIES PROTECTION SERVICE



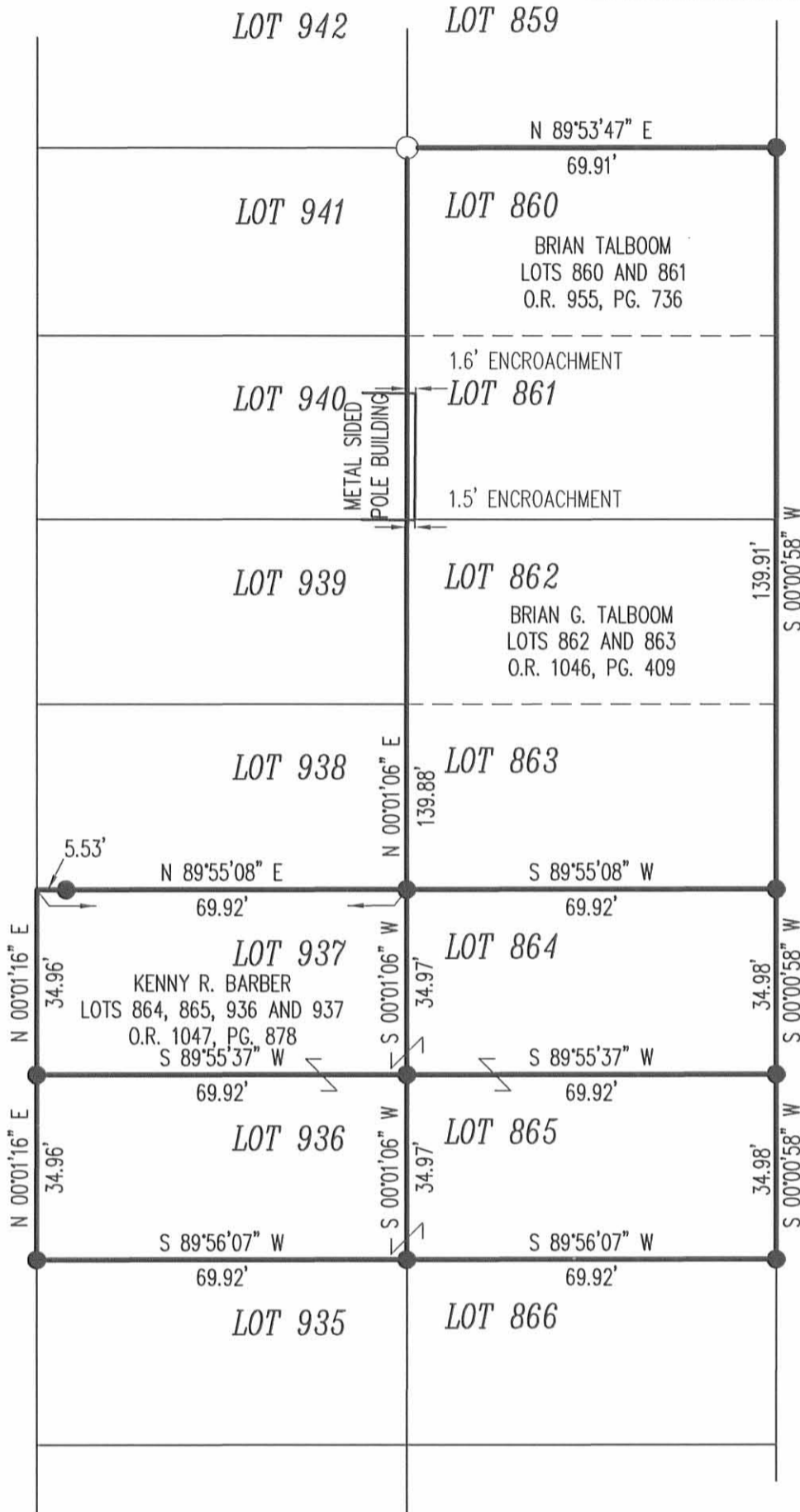
LEGEND

- 5/8 INCH IRON ROD SET WITH PLASTIC I.D. CAP STAMPED "LSM7437"
- 1/2 INCH IRON ROD FOUND
- ⊙ 1/2 INCH IRON PIPE FOUND
- ⊗ 1 INCH IRON PIPE FOUND

MOHAWK PATH (35')

CHEROKEE PATH (35')

BASIS FOR BEARINGS  
S 00°01'16" W  
874.04'

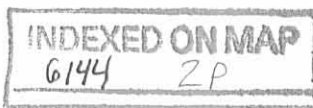


BLUE JACKET PATH (35')

RETRACEMENT SURVEY OF THE  
BRIAN TALBOOM  
LOTS 860 AND 861  
OFFICIAL RECORD 955, PAGE 736  
AND THE BRIAN G. TALBOOM  
LOTS 862 AND 863  
OFFICIAL RECORD 1046, PAGE 409  
AND THE KENNY R. BARBER  
LOTS 864, 865, 936 AND 937  
OFFICIAL RECORD 1047, PAGE 878  
CHIPPEWA PARK ALLOTMENT NO. 1  
PLAT CABINET A, SLIDE 221  
STOKES TOWNSHIP  
LOGAN COUNTY, OHIO



ORIGINAL STAMP IN GREEN



SURVEYED BY:

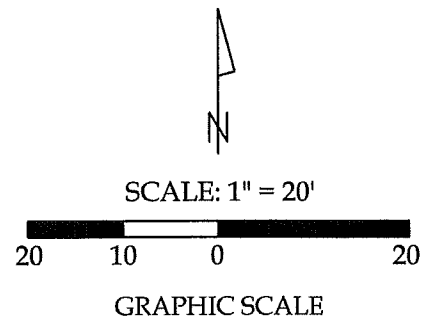
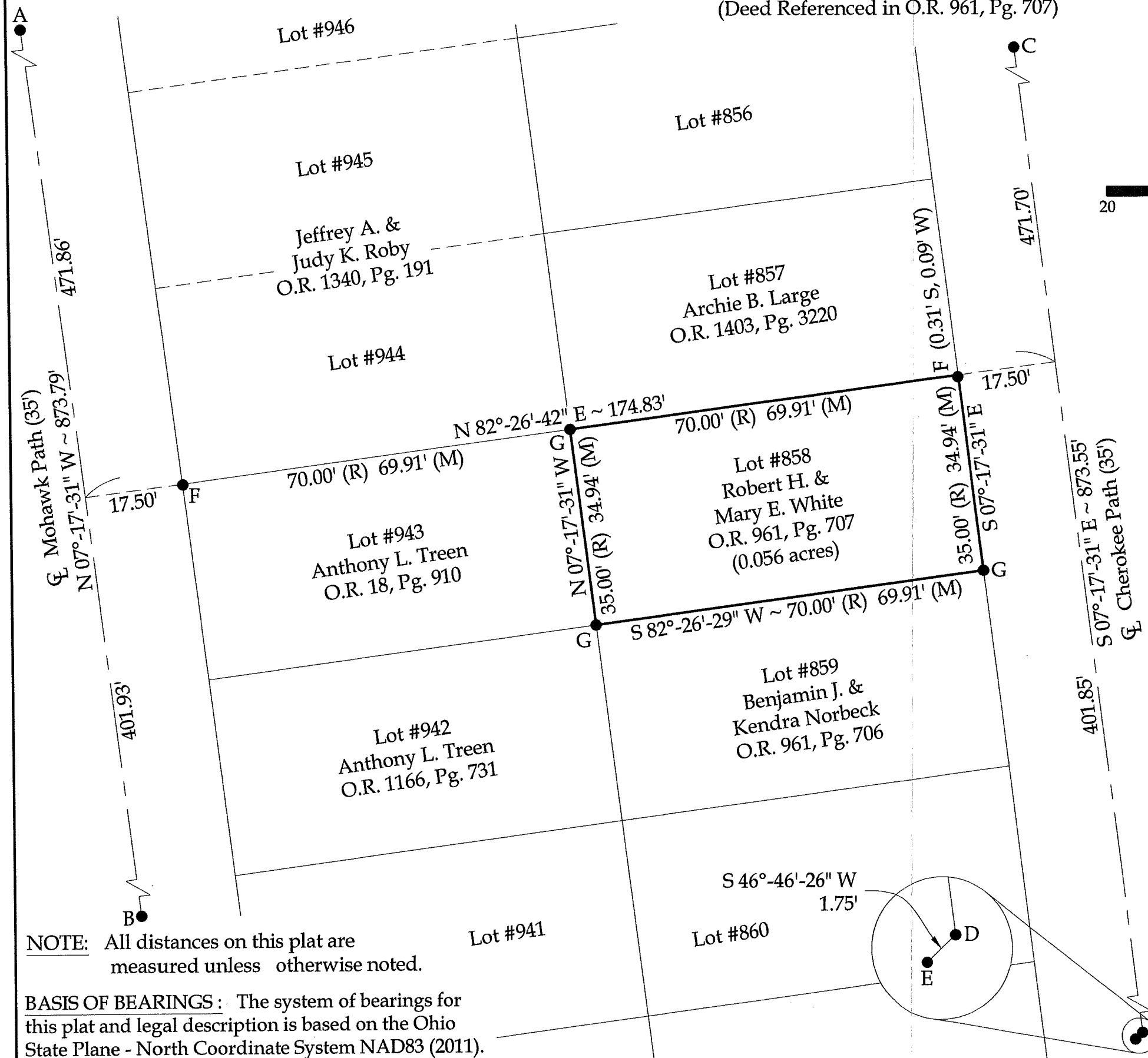
*William K. Bruce*  
WILLIAM K. BRUCE  
PROFESSIONAL SURVEYOR 7437  
MARCH 29, 2012

COPYRIGHT 2012 BY:  
**LEE SURVEYING & MAPPING CO., INC.**  
117 North Madriver Street  
BELLEFONTAINE, OHIO 43311  
(937) 593-7335  
WWW.LSMINC.US  
surveys@lsminc.us

8-1-23  
 ✓ APPROVED

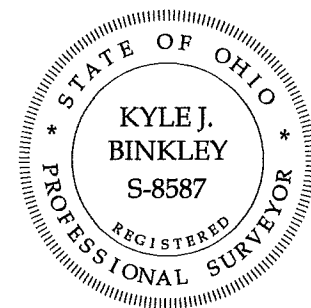
Survey of Parcel #43-005-14-19-025-000 and being Lot #858 of Chippewa Park (P.C. A, Slide 221) and being located in V.M.S. #12276, Stokes Township, Logan County, Ohio.

(Deed Referenced in O.R. 961, Pg. 707)



Legend

- A = Existing Mag Nail at the intersection of the centerlines of Mohawk Path and Eagle Path
- B = Existing Mag Nail at the intersection of the centerlines of Mohawk Path and Blue Jacket Path
- C = Existing Mag Nail at the intersection of the centerlines of Cherokee Path and Eagle Path
- D = Mag Nail set at the intersection of the centerlines of Cherokee Path and Blue Jacket Path
- E = Existing Mag Nail
- F = Existing #5 Rebar
- G = Set #5 Rebar



This plat represents an actual boundary survey completed under my direct supervision on July 25, 2023.

*Kyle J. Binkley*  
 Kyle J. Binkley, P.S. #8587

NOTE: All distances on this plat are measured unless otherwise noted.

BASIS OF BEARINGS : The system of bearings for this plat and legal description is based on the Ohio State Plane - North Coordinate System NAD83 (2011).

**Binkley**  
 LAND SURVEYING, LLC

121 W. Auglaize Street  
 Wapakoneta, Ohio 45895  
 (419) 236-3768

CLIENT: Brian Talboom			
SURVEYED BY: T.J.S./T.E.W.	DATE: 07-25-2023	DRAWN BY: K.J.B.	CHECKED BY: K.J.B.
SCALE: 1" = 20'	PAGE: 1	OF: 1	PAGES: 1

INDEXED ON MAP  
 60144