

Received 8-17-93  
OK gch

**SURVEY FOR STOKES TOWNSHIP TRUSTEES**

Part of Lot 225  
Wise Allotment of Island View  
Stokes Township  
Logan County, Ohio  
V.M.S. 12276  
August, 1993

The following described real estate is situated in Stokes Township, Logan County, Ohio and is part of V.M.S. 12276. Said parcel is a triangular piece out of the Southwest corner of Lot 225 found in Wise Allotment of Island View (Plat Cabinet A, Slide 193, Logan County Recorder's Office) and is more particularly described as follows:

Beginning at a 5/8 inch diameter capped iron found at the Southwest corner of Lot 225 in Wise Allotment of Island View. Said iron being the true point of beginning for this survey.

Thence with the West line of Lot 225 which is also the East line of Ash Avenue, N.12°-47'-16" W., 31.00 feet to a 5/8 inch diameter capped iron set.

Thence S.57°-44'-38" E., 43.87 feet to a 5/8 inch diameter capped iron set on the South line of Lot 225.

Thence with the South line of Lot 225 which is also the North line of Collingwood Avenue, S.77°-18'-00" W., 31.00 feet to the point of beginning.

The above described tract contains 0.011 acre more or less.

This description represents a new survey performed by the Logan County Engineer's Office.

All angles and distances were measured in the field.

All distances are in feet and decimal parts of a foot.

Caps on irons set are stamped "Logan County Engineer".

Basis of bearing being Collingwood Avenue (S.77°-18'-00" W.) as shown on the plat of Wise Allotment of Island View (Plat Cabinet A, Slide 193, Logan County Recorder's Office).

Field work was completed in March, 1993.

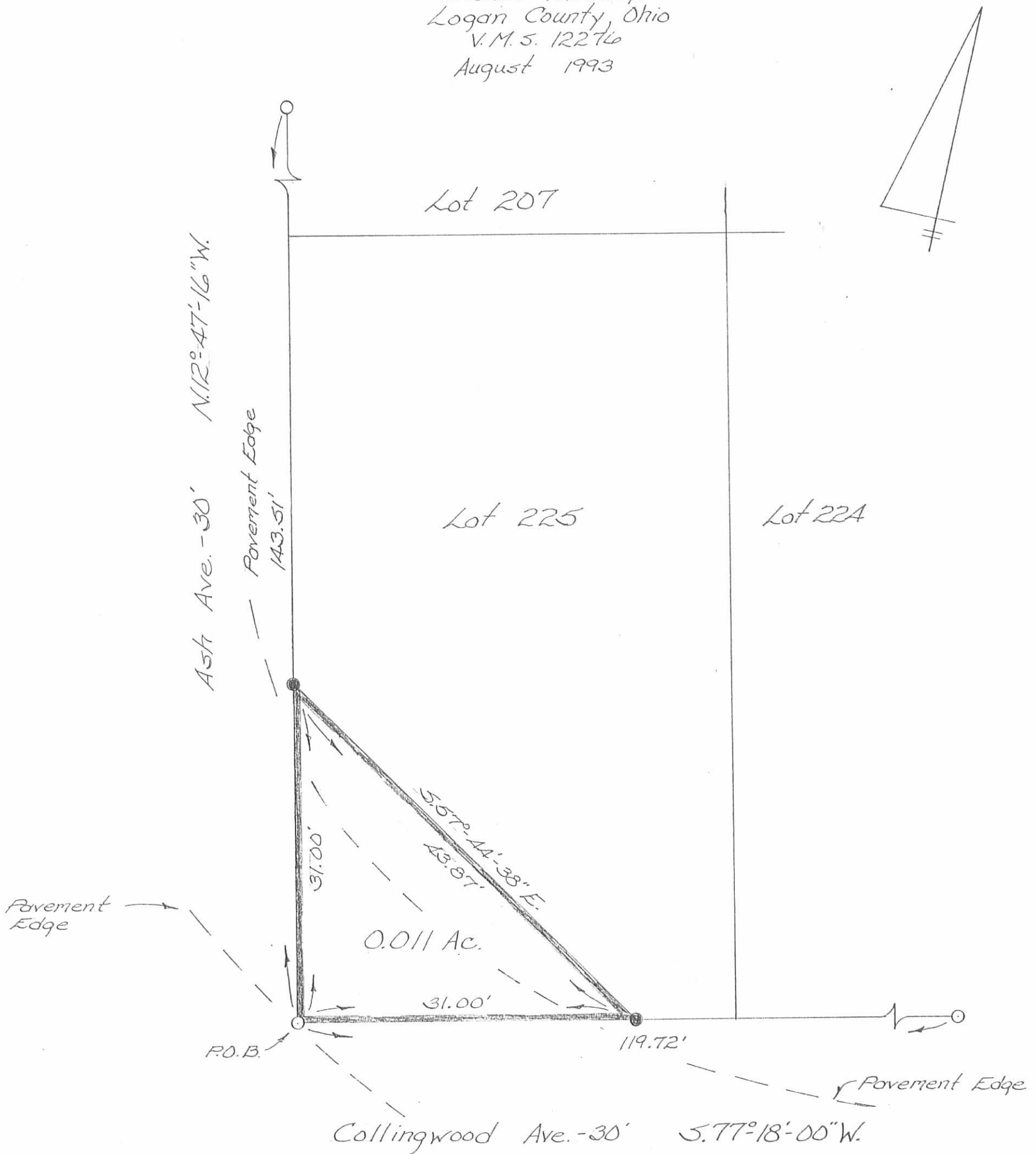


*Curtis D. Dill*  
Curtis D. Dill, P.S.  
Logan County Engineer's Office  
Registered Survey No. 7310  
Bellefontaine, Ohio

INDEXED ON MAP  
6/65 10

Survey for the Stokes Township Trustees

Part of lot 225  
 Wise Allotment of Island View  
 Stokes Township  
 Logan County, Ohio  
 V.M.S. 12276  
 August 1993

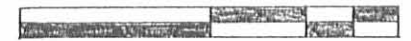


Surveyors Certificate

This plat represents a new survey performed by the Logan County Engineers Office.  
 All angles and distances were measured in the field.  
 All distances are in feet and decimal parts of a foot.  
 Caps on irons set are stamped "Logan County Engineer."  
 Fieldwork was completed in March 1993

Legend

○ = 5/8"  $\phi$  re-bar fd.  
 ● = 5/8"  $\phi$  re-bar set



Scale: 1" = 10'

References

Plot of Wise Allotment of Island View (Plot Cabinet A, slide 193; Logan County Recorder's Office)

Geeslin Survey (Index No. 6165)

INDEXED ON MAP  
 6165 IP

Curtis D. Dill

Curtis D. Dill P.S.  
 Logan County Engineers Office  
 Registered Survey No. 7310  
 Bellefontaine, Ohio



Basis of bearing being Collingwood Ave. (S.77°-18'-00"W) as shown on the plat of Wise Allotment of Island View (J-55).



SCALE: 1" = 30'



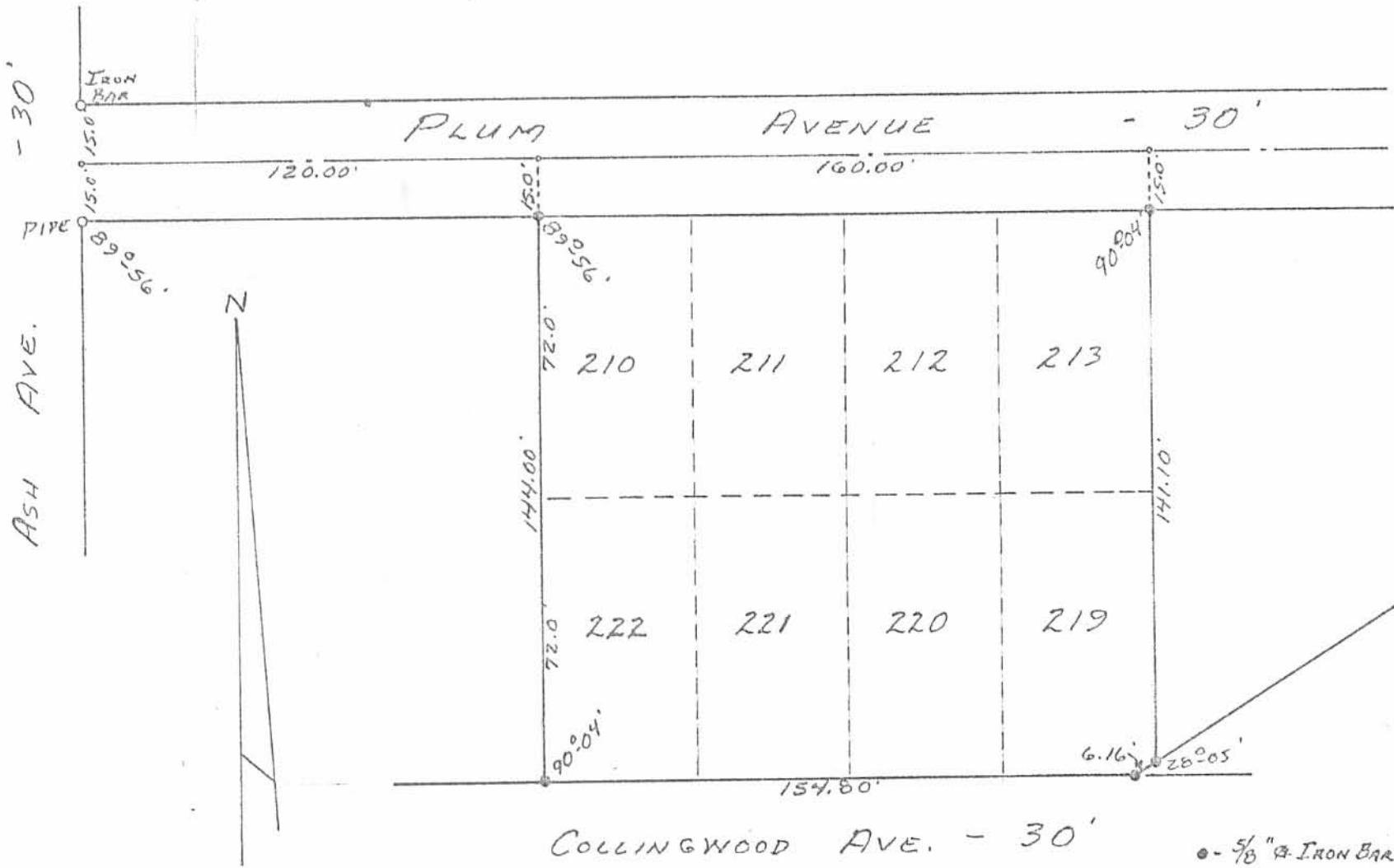
- LEGEND:
- = 5/8 INCH IRON BAR FOUND
  - = 5/8 INCH IRON BAR SET

SURVEY OF LOTS 207, 208, 209, 223, 224 AND 225 IN WISE ALLOTMENT OF ISLAND VIEW IN STOKES TOWNSHIP, LOGAN COUNTY, OHIO FOR



INDEXED ON MAP  
6165 28

*Leslie H. Geeslin*  
LESLIE H. GEESLIN  
RUSHSVLVANIA, OH  
(513) 468-2793



• - 5/8" IRON BARS SET.

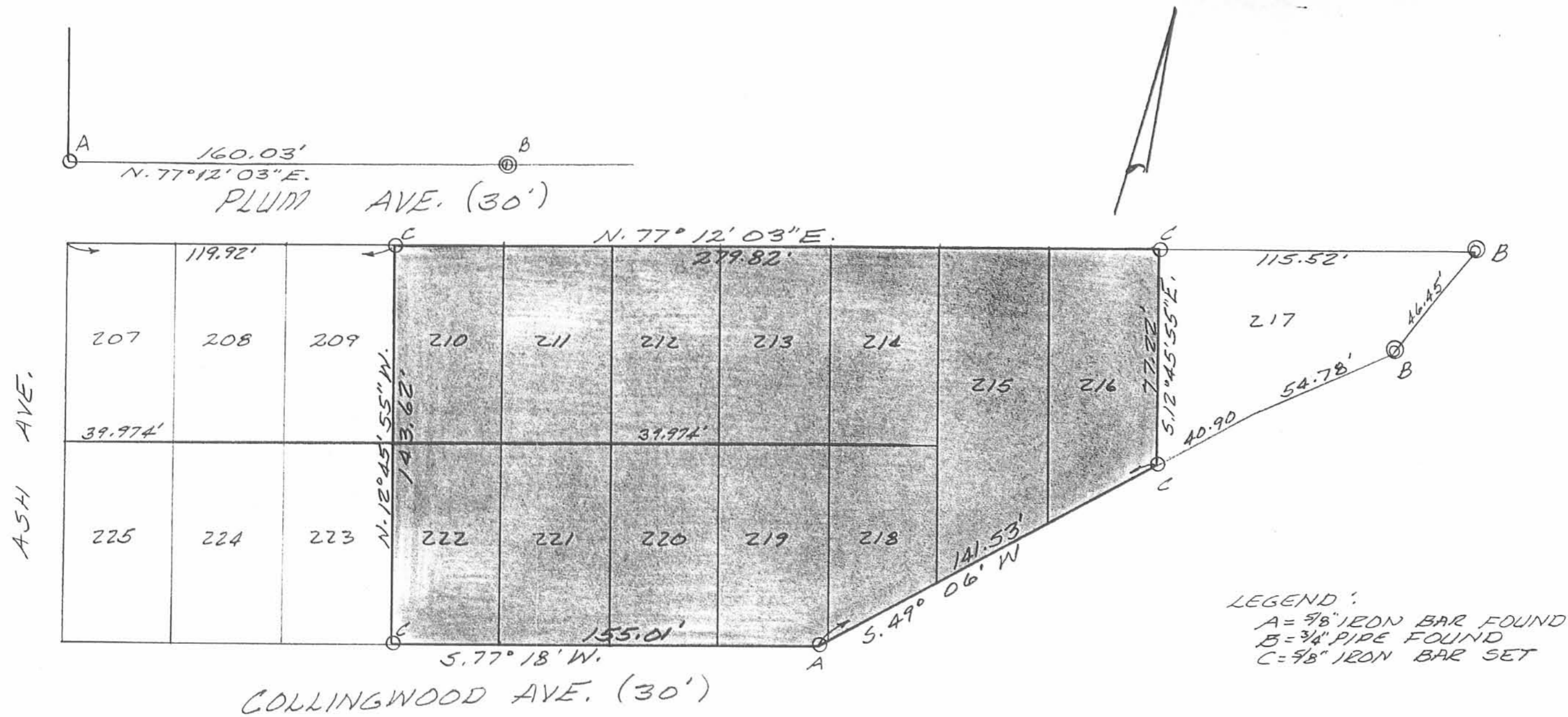
EAGLES AERIE No. 3615 SURVEY  
 LOTS 210, 211, 212, 213, 219, 220, 221, 222  
 WISE ALLOTMENT OF ISLAND VIEW  
 V.M.S. No. 12276  
 STOKES TOWNSHIP  
 LOGAN COUNTY, OHIO  
 NOVEMBER 5, 1977

SCALE: 1" = 40'

(6165) 2P

SURVEYED AND PLATTED BY:  
 DANIEL E. GILBERT, P.S. INDEXED ON MAR  
 REG. SUR. No. 5402  
 1041 N. MAIN ST.  
 BELLEFONTAINE, OHIO 43311

Received 8-6-86



LEGEND:  
 A = 9/8" IRON BAR FOUND  
 B = 3/4" PIPE FOUND  
 C = 9/8" IRON BAR SET

SURVEY OF LOTS 210 - 216 AND LOTS 218 - 222,  
 WISE ALLOTMENT OF ISLAND VIEW FOR THE  
 EAGLES.

JULY, 1986  
 SCALE: 1" = 40'

INDEXED ON MAP  
 '6165 4P



Leslie H. Geeslin  
 LESLIE H. GEESLIN  
 RUSHSVLVANIA, OHIO