

Lee Surveying and Mapping Co.



Farm Surveys • Lot Surveys • Topography • Subdivisions • Construction Layout

855 EAST SANDUSKY AVENUE
BELLEFONTAINE, OHIO 43311

(513) 593-5780

CLAYTON M. LEE, P.S.
JEFFREY I. LEE, P.S.

PAUL CLEMENS SURVEY

Lying in the northwest corner of Section 28, T-6-S, R-8-E, S. & E. Survey, Stokes Township, Logan County, Ohio and being out of that 57 acres deeded and described in Volume 234, Page 461 of the Logan County Records of Deeds and more particularly described as follows:

Beginning at the northwest corner of the said 57 acres at a spike over a stone found at the intersection of the center-lines of County Highway 87 and Township Road 84.

THENCE, with the center-line of Township Road 84, S 1°-15' E, a distance of 874.73 feet to a spike.


THENCE, at right angles to said road, N 88°-45' E, a distance of 229.93 feet to an iron rod.

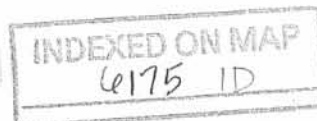
THENCE, again at right angles, N 1°-15' W, a distance of 874.26 feet to a spike set in the center-line of County Highway 87.

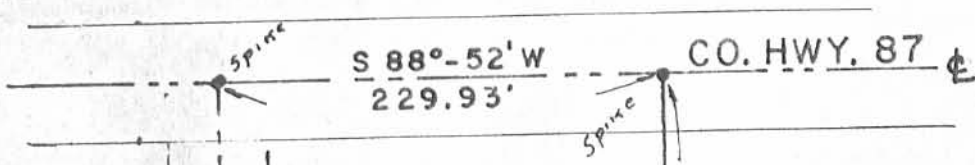
THENCE, with said center-line, S 88°-52' W, a distance of 229.93 feet to the point of beginning. Containing 4.616 acres.

Last previous deed reference: Volume 234, Page 461.

Surveyed by:


Clayton M. Lee
Reg Surveyor No. 6181
2-15-78





57 AC. (Vol. 234, Pg. 461)



SCALE 1" = 100'

S 1°-15' E
874.73

4,616 ACRES

N 1°-15' W
874.26'



SURVEY OF 4,616 ACRES
LYING IN THE NORTHWEST
CORNER OF SECTION 28
T-6-S, R-8-E, S.&E. SURVEY
STOKES TWP., LOGAN CO., OHIO

TWP. RD. 84

N 88°-45 E
229.93'

Iron Rod

6175 IP

INDEXED ON MAP

Surveyed by:
Clayton M. Lee
Clayton M. Lee
Reg. Surveyor 6181

2-15-78

Lee Surveying & Mapping Co.
855 E. Sandusky Ave.
BELLEFONTAINE, OHIO 43311
(513) 593-5780