

2-5/16" IRON BARS SET.

6286 1P

INDEXED ON MAP

SURVEYED AND PLATTED BY:
 DANIEL E. GILBERT, P.S.
 REG. SUR. No. 5402
 1041 N. MAIN ST.
 BELLEFONTAINE, OHIO 43311

PHILBRUN SURVEY
 LOT No. 29
 SEMINOLE SHORES SUB.No. 1
 SEMINOLE ISLAND
 STOKES TOWNSHIP
 LOGAN COUNTY, OHIO
 APRIL 14, 1979

SCALE: 1" = 40'

12-6-18
APPROVED

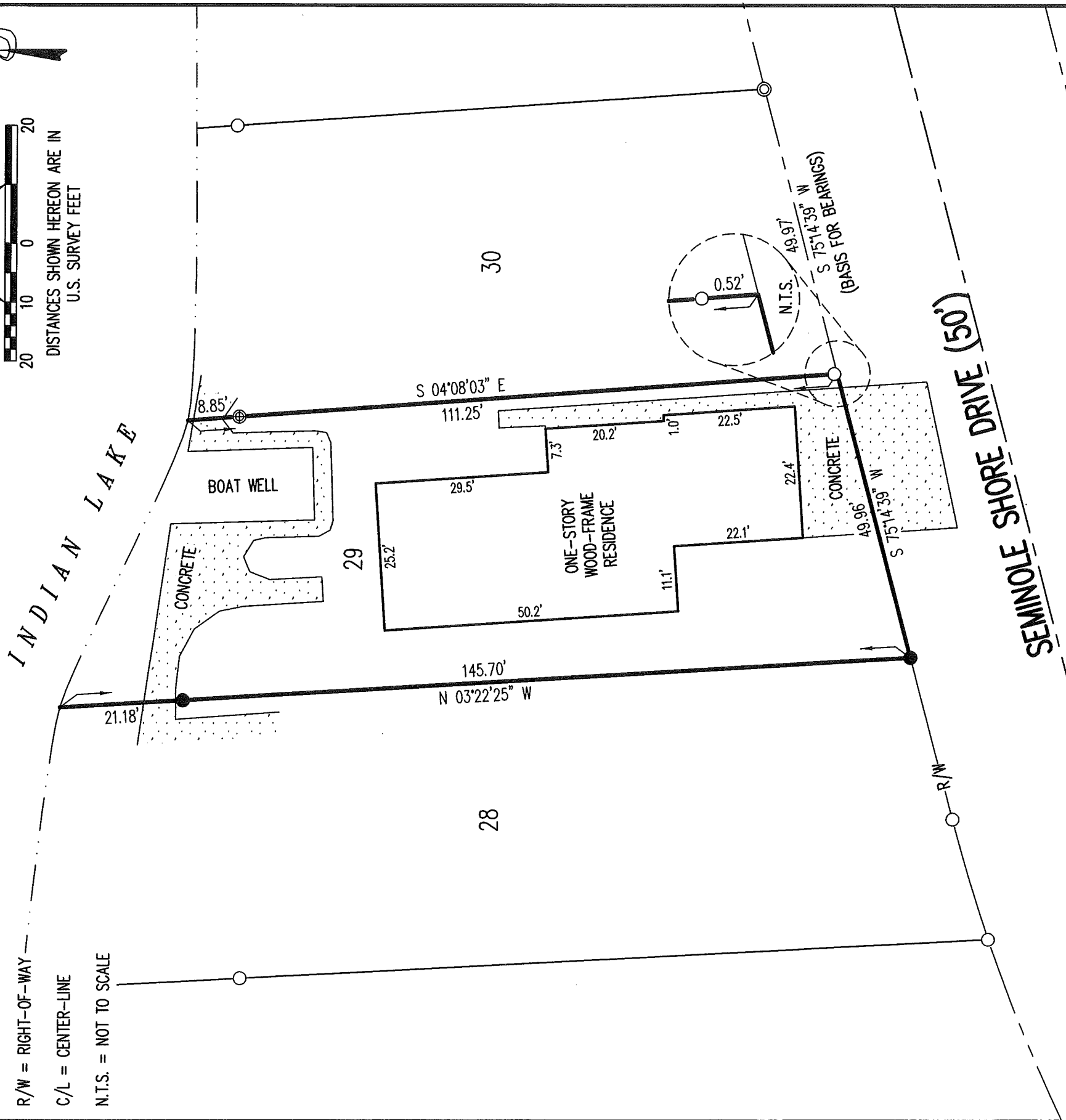
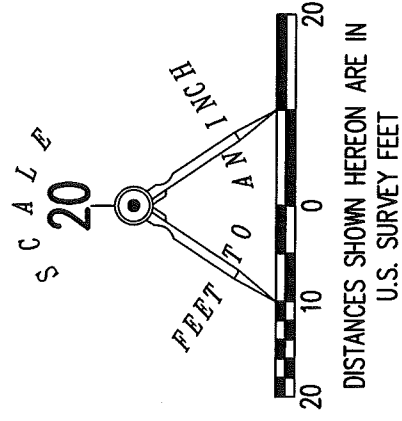


DEED & SURVEY REFERENCES:

SEMINOLE SHORES SUBDIVISION NO. 1
PLAT CABINET A, SLIDE 251
LOGAN COUNTY ENGINEER'S MAP ROOM
FILES 2024 AND 7110

- 1-1/2 INCH IRON PIPE FOUND
- 3/4 INCH IRON PIPE FOUND
- 5/8 INCH IRON ROD FOUND
- 5/8 INCH BY 30 INCH IRON ROD SET WITH PLASTIC I.D. CAP STAMPED "P.S. 8533"

R/W = RIGHT-OF-WAY
C/L = CENTER-LINE
N.T.S. = NOT TO SCALE



**LOCATION OF IMPROVEMENTS AND
RETRACEMENT SURVEY OF**

LOT 29

**SEMINOLE SHORES SUBDIVISION NO. 1
PLAT CABINET A, SLIDE 251
STOKES TOWNSHIP
LOGAN COUNTY, OHIO**

SURVEYED BY:

BASIS FOR BEARINGS:

THE BASIS FOR BEARINGS, SHOWN HEREON,
IS AN ASSUMED BEARING FOR THE NORTH RIGHT-OF-WAY
LINE OF SEMINOLE SHORE DRIVE, BEING S 75°14'39\"/>

THIS SURVEY WAS PREPARED IN THE ABSENCE OF
A COMPLETE AND ACCURATE TITLE SEARCH AND
DOES NOT GUARANTEE TITLE.

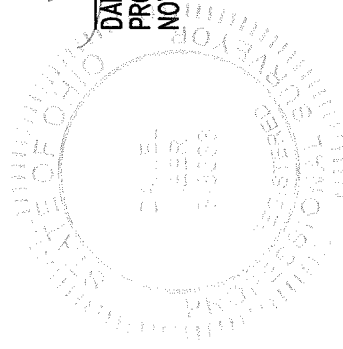


2 WORKING DAYS

BEFORE YOU DIG

CALL TOLL FREE **800-362-2764**

OHIO UTILITIES PROTECTION SERVICE.



DANIEL A. NEER
PROFESSIONAL SURVEYOR NO. 8533
NOVEMBER 30, 2018

COPYRIGHT 2018 BY:
LEE SURVEYING & MAPPING CO.
117 North Madriver Street
BELLEFONTAINE, OHIO 43311

(937) 593-7335
WWW.LEE-SURVEYING.COM
surveys@lee-surveying.com
KSS D1118 64651118 L-6465-3

INDEXED ON MAP
2286