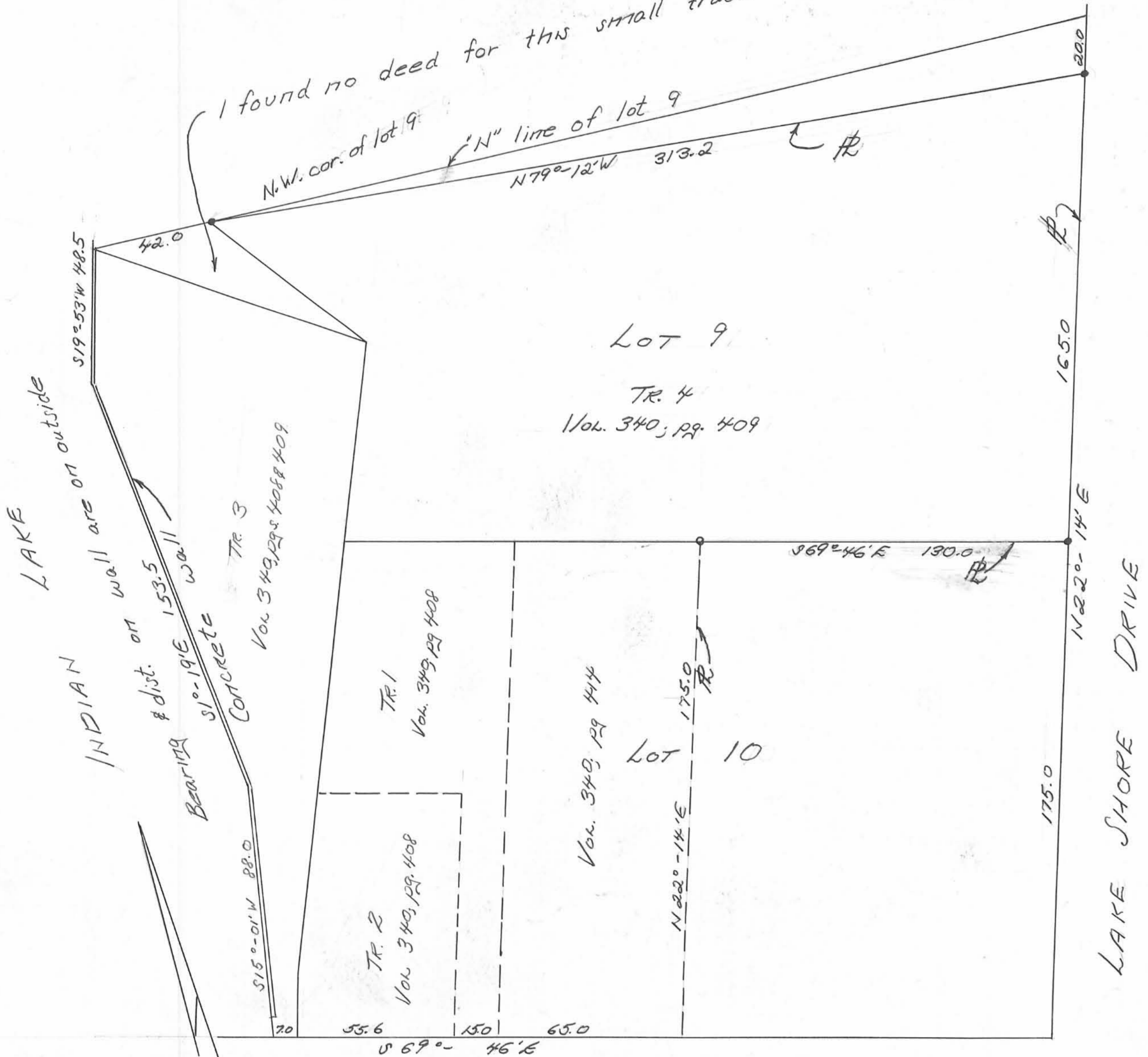


DAY MET SURVEY OF LANDS ON WEST SIDE OF SHAWNEE ISL.
 STOKES TWP., LOGAN CO., OHIO

1" = 30' • DENOTES IRONS

I found no deed for this small tract.



Lot 9
 TR. 4
 Vol. 340, pg. 409

Lot 10
 TR. 1
 Vol. 340, pg. 408
 TR. 2
 Vol. 340, pg. 408
 TR. 3
 Vol. 340, pg. 408, 409

STATE ROUTE 368

Owen K. Shirk
 Surveyor 4271
 6-28-72

SHAWNEE ISLAND CONDOMINIUM

V.M.S. No. 12276
 SHAWNEE ISLAND
 STOKES TOWNSHIP
 LOGAN COUNTY, OHIO

1974

SCALE: 1" = 20'

AREAS:
 0.856 ACRES - LOT No. 9 PART.
 0.525 ACRES - LOT No. 10 PART.
 0.296 ACRES - V.M.S. No. 12276.
 0.024 ACRES - V.M.S. No. 12276, NOT COVERED BY DEEDS.
 1.701 ACRES TOTAL.

SURVEYORS CERTIFICATE

I HEREBY CERTIFY THAT THE ACCOMPANYING PLAT IS A TRUE REPRESENTATION OF SHAWNEE ISLAND CONDOMINIUM. ALL MEASUREMENTS ARE IN FEET AND TENTHS OF A FOOT. THE OUTLINE OF THE BUILDINGS SHOW THE OUTSIDE PERIMETER AND INDENTATIONS. ALL IMPROVEMENTS SHOWN WERE IN PLACE AT TIME OF SURVEY.

Daniel E. Gilbert, P.S.
 DANIEL E. GILBERT, P.S.
 REG. SUR. No. 5402
 BELLEFONTAINE, OHIO

ARCHITECTS CERTIFICATE

ACCEPTANCE

PLAT RECEIVED FOR RECORD AT _____ O'CLOCK _____ M.
 ON THE _____ DAY OF _____, 1974.
 RECORDED IN PLAT BOOK _____ PAGE _____.

LOGAN COUNTY RECORDER

6275-1P
 INDEXED ON MAP



NOTE: THIS PLAT TO BE FILED IN THE OFFICE OF LOGAN COUNTY ENGINEER.