

O - IRON PIPES FO. OR SET.

6312 IP

INDEXED ON MAP

SURVEYED AND PLATED BY:
DANIEL E. GILBERT, P.S.
REG. SUR. No. 5402
1041 N. MAIN ST.
BELLEFONTAINE, OHIO 43311

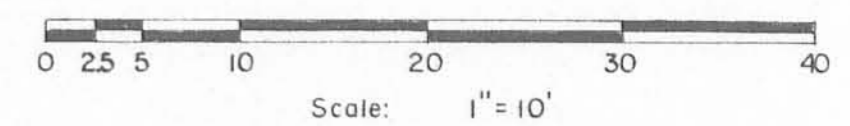
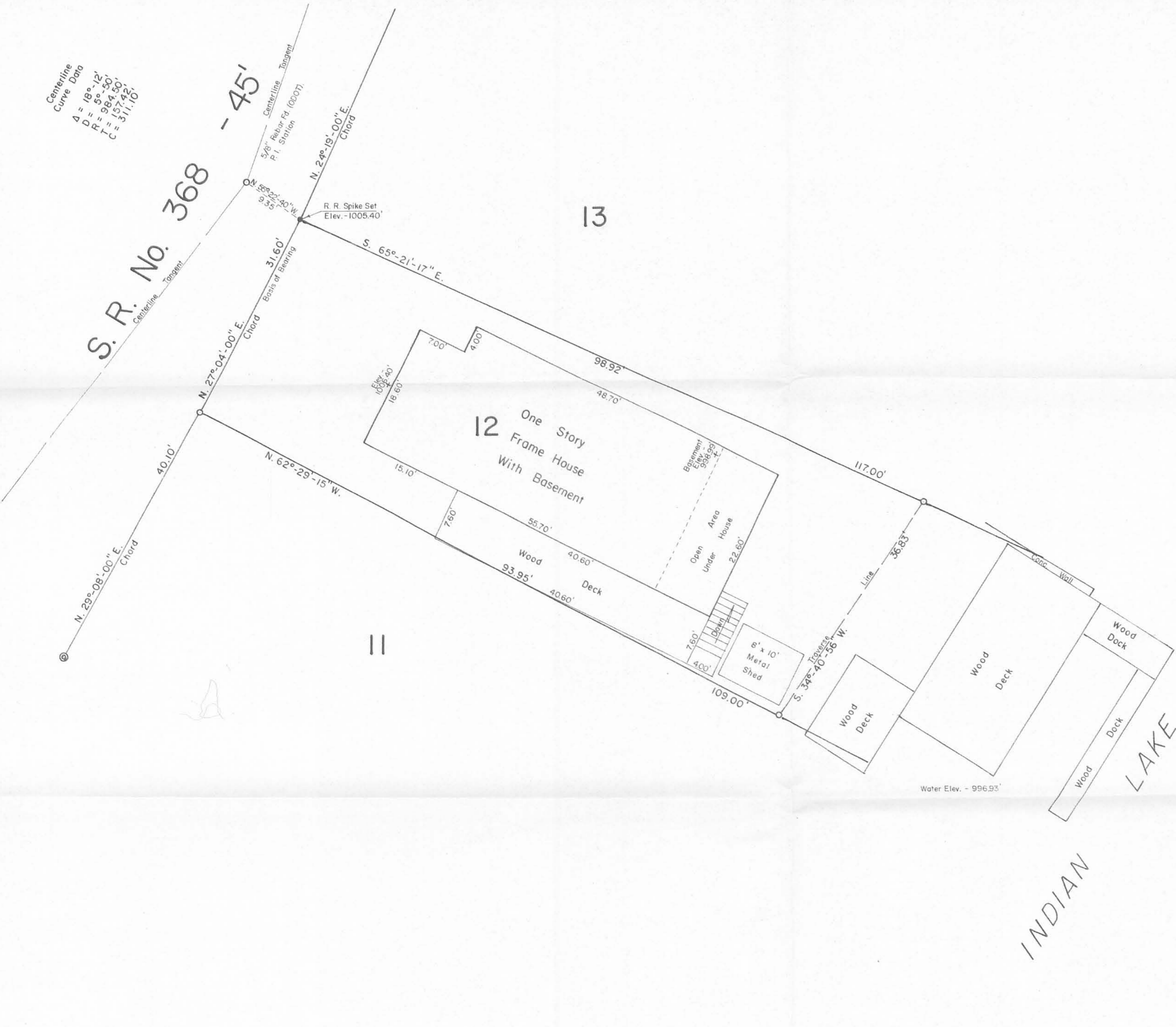
SURVEY OF LOTS 10-11
LAKE RIDGE SUBDIVISION
V.M.S. No. 9968
STOKES TOWNSHIP
LOGAN COUNTY, OHIO
JUNE 16, 1979

SCALE: 1" = 40'

Centerline
Curve Data
 $\Delta = 18^{\circ}12'$
 $R = 98^{\circ}50'$
 $T = 184.50'$
 $C = 311.10'$

S. R. No. 368

- 45'



Reference:
 Lakeridge Subdivision No. 1 (7-1-1957).
 Plat Cab. A Slide 354.

Symbols:
 ○ - 3/4" O.D. Iron Pipes Fd.
 ⊙ - 1 1/2" O.D. Iron Pipe Fd.

11

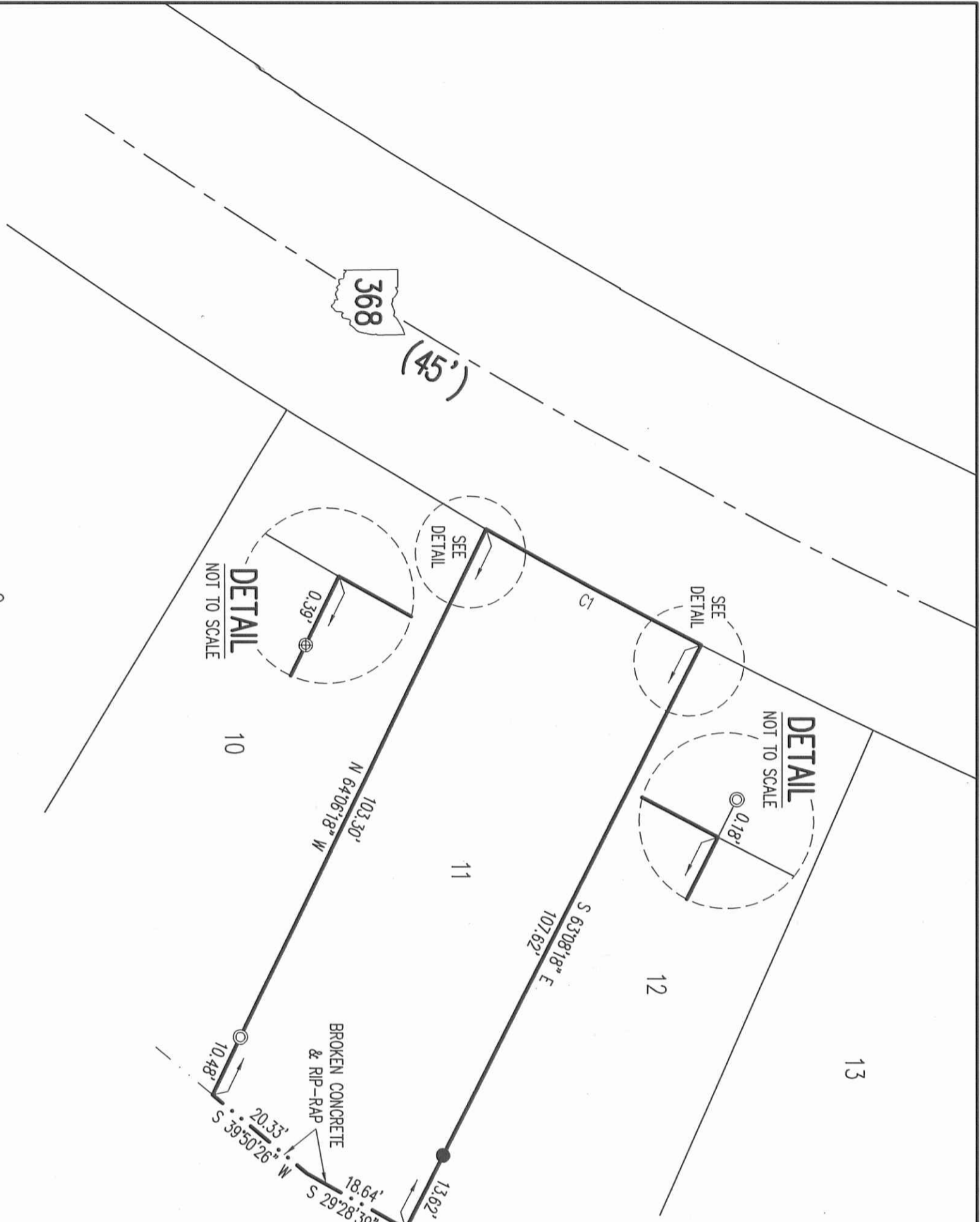
13

INDIAN LAKE

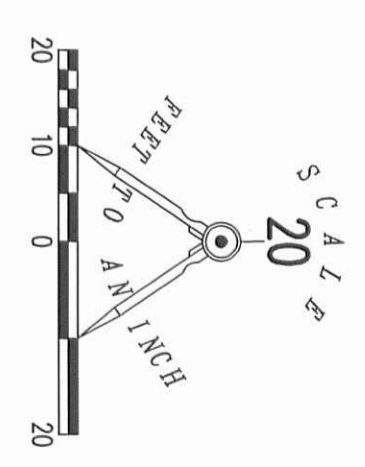
INDEXED ON MAP
 6312 2P



Survey of Lot No. 12, Lakeridge Subdivision No. 1, V.M.S. No. 12276, Lakeridge Island, Stokes Township, Logan County, Ohio.		
SCALE 1" = 10'	APPROVED BY	DRAWN BY DEG
DATE 9-13-1997	<i>Daniel E. Gilbert</i>	
Daniel E. Gilbert, P.S. Reg. Sur. No. 5402		DRAWING NUMBER 097-034



- LEGEND:
- ⊙ 1/2 INCH IRON PIPE FOUND
 - ⊕ 3/4 INCH IRON PIPE FOUND
 - MAG NAIL SET
 - 5/8 INCH IRON ROD SET WITH PLASTIC I.D. CAP STAMPED "LSM 7437"



CURVE	DELTA ANGLE	RADIUS	ARC LENGTH	CHORD BEARING	CHORD LENGTH
C1	02°20'19"	984.50'	40.19'	N 28°24'20" E	40.18'

9

INDIAN LAKE

RETRACEMENT SURVEY OF THE
 THEODORE S. SOTHARD
 AND AMY L. SOTHARD
 LOT NO. 11
 LAKERIDGE SUBDIVISION
 PLAT CABINET A, SLIDE 354
 OFFICIAL RECORD 845, PAGE 984
 VIRGINIA MILITARY SURVEY 9968
 STOKES TOWNSHIP
 LOGAN COUNTY, OHIO

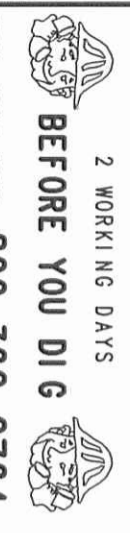
SURVEYED BY:

William K. Bruce
 WILLIAM K. BRUCE
 PROFESSIONAL SURVEYOR 7437
 MARCH 21, 2014



COPYRIGHT 2014 BY:
LEE SURVEYING & MAPPING CO., INC.
 117 North Madriver Street
 BELLEFONTAINE, OHIO 43311
 (937) 593-7335
 WWW.LSMINC.US

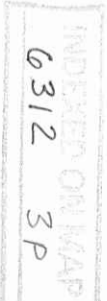
surveys@lsminc.us
 KSS D0314 57040314 L-5704-3



2 WORKING DAYS

CALL TOLL FREE **800-362-2764**

OHIO UTILITIES PROTECTION SERVICE

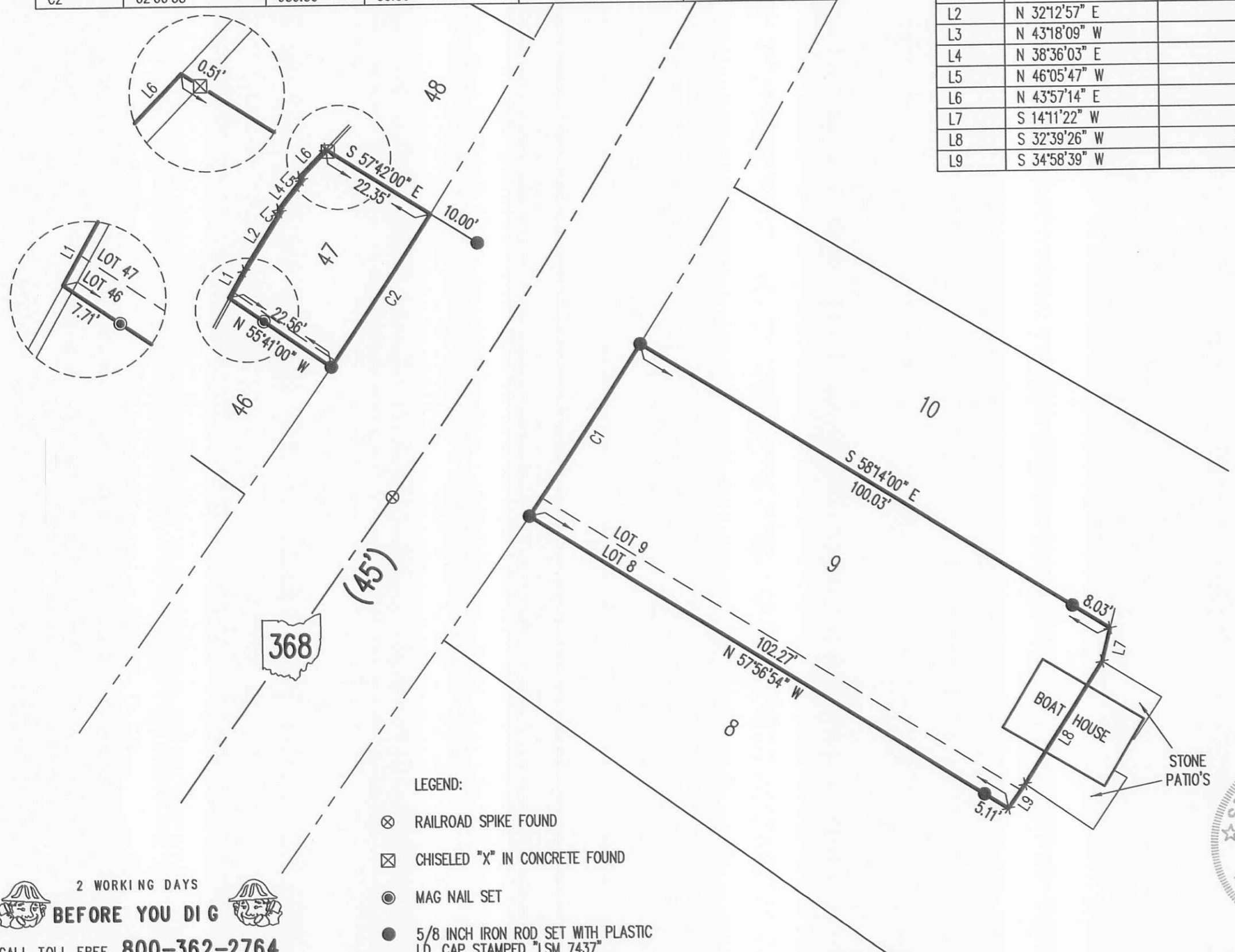
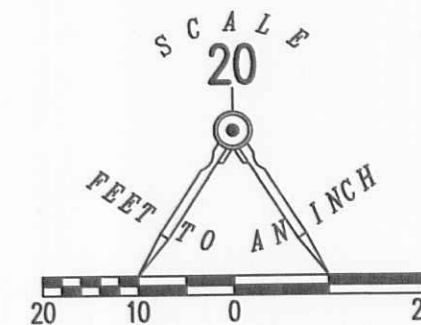


10-23-15

APPROVED

CURVE	DELTA ANGLE	RADIUS	ARC LENGTH	CHORD BEARING	CHORD LENGTH
C1	02°10'03"	984.50'	37.24'	N 33°24'59" E	37.24'
C2	02°00'58"	939.50'	33.06'	S 33°20'32" W	33.06'

LINE	BEARING	DISTANCE
L1	N 29°24'15" E	5.62'
L2	N 32°12'57" E	12.65'
L3	N 43°18'09" W	0.51'
L4	N 38°36'03" E	6.93'
L5	N 46°05'47" W	0.60'
L6	N 43°57'14" E	7.01'
L7	S 14°11'22" W	6.22'
L8	S 32°39'26" W	26.44'
L9	S 34°58'39" W	5.38'



- LEGEND:
- ⊗ RAILROAD SPIKE FOUND
 - ⊠ CHISELED "X" IN CONCRETE FOUND
 - MAG NAIL SET
 - 5/8 INCH IRON ROD SET WITH PLASTIC I.D. CAP STAMPED "LSM 7437"

RETRACEMENT SURVEY OF THE
 SHELLY M. ZIMMERMAN
 LOT 47 AND PART OF LOT 46
 LAKERIDGE SUBDIVISION NO. 2
 PLAT CABINET A, SLIDE 360
 AND LOT 9 AND PART OF LOT 8
 LAKERIDGE SUBDISIOM
 PLAT CABINET A, SLIDE 354
 OFFICIAL RECORD 1193, PAGE 75
 TRACTS I, II, III, AND IV
 VIRGINIA MILITARY SURVEY 9968
 STOKES TOWNSHIP
 LOGAN COUNTY, OHIO

SURVEYED BY:
William K. Bruce
 WILLIAM K. BRUCE
 PROFESSIONAL SURVEYOR 7437
 OCTOBER 14, 2015



COPYRIGHT 2015 BY:
LEE SURVEYING & MAPPING CO., INC.
 117 North Madriver Street
 BELLEFONTAINE, OHIO 43311
 (937) 593-7335
 WWW.LSMINC.US
 surveys@lsminc.us
 KSS D0915 60110915 L-6011-3

2 WORKING DAYS
BEFORE YOU DIG
 CALL TOLL FREE **800-362-2764**
 OHIO UTILITIES PROTECTION SERVICE.

INDEXED ON MAP
 6312 4P