

# Lee Surveying and Mapping Co.



Farm Surveys • Lot Surveys • Topography • Subdivisions • Construction Layout

855 EAST SANDUSKY AVENUE  
BELLEFONTAINE, OHIO 43311

(513) 593-5780

CLAYTON M. LEE, P.S.  
JEFFREY I. LEE, P.S.

## BOOKEND TO OWN SURVEY

Lying in the northwest quarter of Section 34, T-6-S, R-8-E, Stokes Township, Logan County, Ohio and being a survey of that same tract of land (57.40 acres) as deeded and described in Volume 234, Page 557 of the Logan County Records of Deeds and more particularly described as follows:

Beginning at an iron spike set on the center-line of State Route 720 at the southeast corner of grantor's property. This point also marking the southwest corner of a 20 acre tract (Volume 361, Page 931) and being highway Station 74+90.

THENCE, with the center-line of State Route 720, S 84°-22' W, a distance of 664.72 feet to an iron rod set at the southwest corner of grantor's land. This point also marking the southeast corner of a 40 acre tract (Volume 366, Page 637) and being on the west line of Section 34.

THENCE, with the west line of Section 34, N 5°-56'-10" W, a distance of 2485.70 feet to an iron rod set on the south right-of-way line of the T. & O.C. Railroad.

THENCE, with said railroad right-of-way, S 82°-52'-20" E, a distance of 1715.17 feet to an iron pipe found marking the northeast corner of grantor's land at an offset point in said right-of-way line where the right-of-way widens from 66 feet to 100 feet.

THENCE, with the east line of grantor's land and along the west line of a 5.35 acre tract (Volume 281, Page 146), S 5°-40'-20" E, a distance of 782.44 feet to an iron pipe found at a corner.

THENCE, with grantor's line and along the north line of 2 tracts (43.90 acres, Volume 349, Page 798 and 20 acres, Volume 361, Page 931), S 84°-33'-50" W, a distance of 1002.18 feet to the northwest corner of said 20 acres.

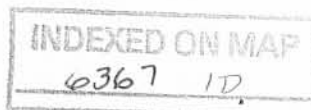
THENCE, along the west line of said 20 acres, S 5°-55'-30" E, a distance of 1327.86 feet to the point of beginning. Containing 57.419 acres.

Last previous deed reference: Volume 234, Page 557.

Prepared by:

*Clayton M. Lee*

Clayton M. Lee  
Reg. Surveyor No. 6181  
12-12-79



Sec. 28  
Sec. 35

Sec. 27  
Sec. 34

C.R. 82

162.93'  
I.Rod set

S 82°-52'-20" E  
T. & O.C. R.R.  
1715.17'  
R/W 66'

SCALE 1" = 300'

NORTH

1" Pipe fnd  
Lakeview Corp. Line  
R/W 100'

E. Leiminger  
38.64 AC.  
Vol. 236, Pg. 54

57.419 ACRES

Village of Lakeview  
5.35 AC.  
Vol. 281, Pg. 146

782.44'  
S 5°-40'-20" E

S 84°-33'-50" W 1002.18'

I.Rod set

D. M. Mackesy  
20.0 AC.  
Vol. 361, Pg. 931

S. F. Myers  
43.90 AC.  
Vol. 349, Pg. 798

1" Pipe fnd

SURVEY OF 57.419 ACRES (57.40 Ac. Deed)  
For H. EUGENE BOOGHER, Vol. 234, Pg. 557  
IN THE N.W. 1/4, Sec. 34, T-6 S, R-8 E  
STOKES TWP., LOGAN CO., OHIO

SURVEYED BY:

*Jeffrey I. Lee*

Jeffrey I. Lee  
Reg. Surveyor 6359  
Dec. 11, 1979

6367-1P

INDEXED ON MAP



M. Maag  
40.00 AC.  
Vol. 366, Pg. 637

N 5°-56'-10" W  
2485.70

1327.86'  
S 5°-55'-30" E

I.Rod set  
Sta. 75+00 found

74+90 Spike set

Sta. 70+00 found

I.Rod set  
Spike set

175.00'  
664.72'  
S 84°-22' W

S.R. 720

LEE SURVEYING & MAPPING CO.  
855 E. Sandusky Ave.  
BELLEFONTAINE, OHIO 43311  
(513) 593-5780

REC'D 5-30-02 SMM/OK

# Lee Surveying and Mapping Co., Inc.

Land Surveys • Topography • Subdivisions • Construction Layout

117 N. Madriver St.  
Bellefontaine OH 43311



Phone: (937) 593-7335  
Fax: (937) 593-7444

## OEN 6.000 ACRES

Lying in Section 34, Town 6, Range 8, Stokes Township, Logan County, Ohio.

Being out of the Myron Oen, Trustee, 57.419 acre tract as deeded and described in Official Record 256, Page 655, Tract I of the Logan County Records of Deeds and being more particularly described as follows:

Beginning at a 3 inch angle iron post found on the southwest corner of West Street (25 feet wide) and on the southeast corner of the Village of Lakeview, Logan County, Ohio 7 acre tract (Vol. 314, Pg. 427).

THENCE, with the south line of the said 7 acre tract, the south line of the Village of Lake View, Ohio, 3 acre tract (Vol. 125, Pg. 348) and the south line of the Village of Lakeview, Logan County, Ohio 5.35 acre tract (Vol. 281, Pg. 146), and the north line of the Myrna J. Hentges, Trustee original 47.369 acre tract (O.R. 304, Pg. 862, Parcel No. 1), N 89°-59'-32" W, a distance of 997.44 feet to a 1 inch iron pipe found on the southwest corner of the said 5.35 acre tract and the southeast corner of the said 57.419 acre tract at the TRUE POINT OF BEGINNING.

THENCE, with the north line of the said 47.369 acre tract, N 89°-59'-32" W, a distance of 319.17 feet to a 5/8 inch iron rod set.

THENCE, N 0°-16'-32" W, a distance of 854.99 feet to a 5/8 inch iron rod set.

THENCE, with the south line of the Logan County Commissioners 0.603 acre tract (Vol. 402, Pg. 848, Third Tract), S 77°-15'-40" E, a distance of 327.58 feet to a 5/8 inch iron rod found.

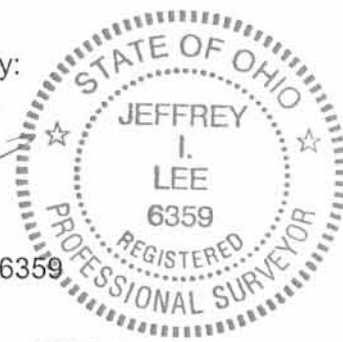
THENCE, with the west corporation line of the Village of Lakeview and the west line of the Village of Lakeview, Lakeview, Ohio 43331, 1.951 acre tract (Vol. 395, Pg. 690) and the west line of the said 5.35 acre tract, S 0°-16'-32" E, a distance of 782.80 feet to the point of beginning, passing a 5/8 inch iron rod set at 17.41 feet.

Containing 6.000 acres.

The basis for bearings is the west line of the said 5.35 acre tract, being S 0°-16'-32" E, and all other bearings are from angles and distances measured in a field survey by Lee Surveying and Mapping Co., Inc. on May 23, 2002.

Description prepared by:

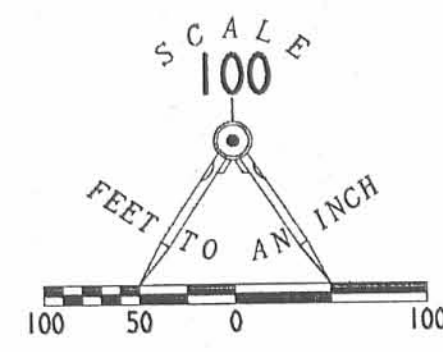
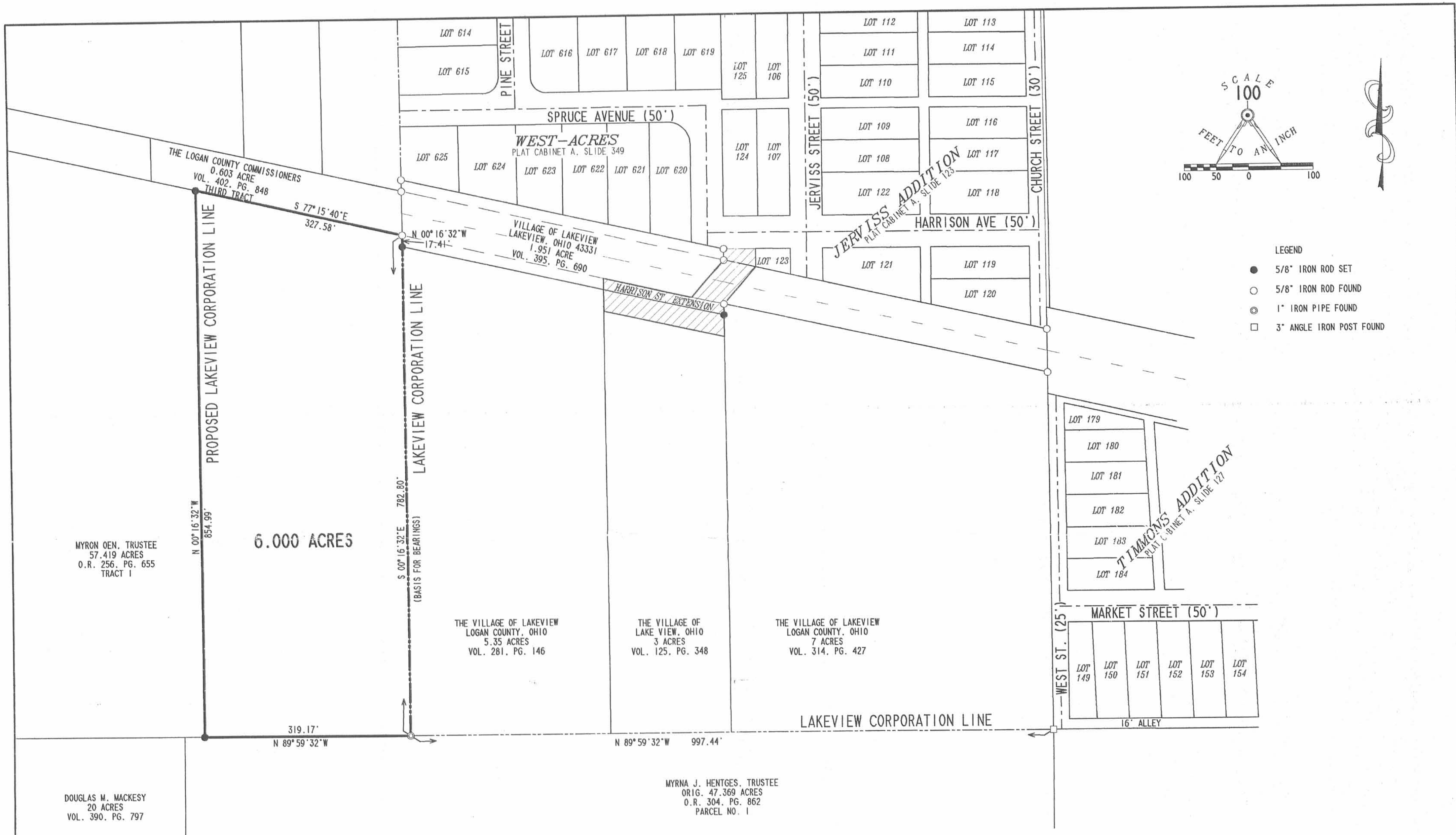
Jeffrey I. Lee  
Professional Surveyor 6359  
May 28, 2002



ORIGINAL STAMP IN GREEN

L-3351

INDEXED ON MAP  
6367 27



- LEGEND
- 5/8" IRON ROD SET
  - 5/8" IRON ROD FOUND
  - ⊙ 1" IRON PIPE FOUND
  - 3" ANGLE IRON POST FOUND

**SURVEY OF 6.000 ACRES OUT OF THE**  
**MYRON OEN, TRUSTEE**  
**57.419 ACRE TRACT**  
**OFFICIAL RECORD 256, PAGE 655, TRACT I**  
**SECTION 34, TOWN 6 SOUTH, RANGE 8 EAST**  
**STOKES TOWNSHIP**  
**LOGAN COUNTY, OHIO**



SURVEYED BY:  
  
 WILLIAM K. BRUCE  
 PROFESSIONAL SURVEYOR 7437  
 MAY 23, 2002  
 COPYRIGHT 2002 BY:  
**LEE SURVEYING & MAPPING CO., INC.**  
 117 North Madriver Street  
 BELLEFONTAINE, OHIO 43311  
 (937) 593-7335

2 WORKING DAYS  
**BEFORE YOU DIG**  
 CALL TOLL FREE **800-362-2764**  
OHIO UTILITIES PROTECTION SERVICE.

D403      LVPARK      L-3351-2

**INDEXED ON MAP**  
 6367 2P