

Rec'd 3-3-99 OK JCH

**GHORMLEY CEMETERY SURVEY
STOKES TOWNSHIP
LOGAN COUNTY, OHIO
V.M.S. 12276
NOVEMBER - DECEMBER 1997**

The following described real estate is found in Stokes Township, Logan County, Ohio and is part of V.M.S. 12276. Said real estate being all of that 1 3/5 acre tract deeded to Logan County from David Ghormley (D.B. Vol. 33, pg. 19), all of that 0.19 acre tract deeded to the Trustees of Stokes Township from William F. Cook etux (D.B. Vol. 131, pg. 127), all of that area shown on a 1901 survey for Dennis Denny that is labeled graveyard (Logan County Survey Records Book A, page 306), all of Robert L. Raney etux's 0.26 acre tract (O.R. Vol. 182, pg. 380), part of Nelson C. Barnes's 1.565 acre tract (O.R. Vol. 123, pg. 698), part of the present right of way of Ash Avenue, Delaware Path, and Macoma Path (now known as Nacoma Path) as shown on the recorded plat of Chippewa Park No. 2 (plat cabinet A, slide 184). Said real estate is more particularly described as follows:

Beginning for reference at a right of way monument found on the South side of State Route No. 235. Said right of way monument being 30.00 feet right of centerline station 212+67.38. Said right of way monument shown as being 30.00 feet right of centerline station 212+66.6 on page 4 of Logan County S.H. 232 Sec. A R/W plans (L-17).

Thence with the South right of way line of State Route 235 and the North line of Nelson C. Barnes 1.565 acre tract (O.R. Vol. 123, pg. 698), S. 63°-00'-55" W., 357.81 feet to a 5/8 inch diameter capped re-bar set on the East line of Logan County's 1 3/5 acre tract (D.B. Vol. 33, pg. 19). Said capped re-bar set being the true point of beginning for this description.

Thence with the East line of Logan County's 1 3/5 acre tract and through Barnes' 1.565 acre tract, S. 30°-30'-48" E., 217.44 feet to a 5/8 inch diameter capped re-bar set. Said capped re-bar set being the Southeast corner of Logan County's 1 3/5 acre tract. The above described line passes through a 5/8 inch diameter capped re-bar set on Barnes' West line at 18.68 feet.

Thence with the South line of Logan County's 1 3/5 acre tract, S. 69°-38'-42" W., 92.06 feet to a 5/8 inch diameter capped re-bar set on the East line of the graveyard as shown on the 1901 Denny Survey (Bk. A., pg. 306). Said point also being on the West line of Delaware Path as shown on the recorded plat of Chippewa Park No. 2.

Thence with the East line of the graveyard and the West line of Delaware Path extended, S. 44°-43'-00" E., 23.07 feet to a 5/8 inch diameter capped re-bar set at the Southeast corner of the graveyard. The above described line passes through a 5/8 inch diameter capped re-bar

6391 1D-1

set on the intersection of the West line of Delaware Path with the North line of Nacoma Path at 14.39 feet.

Thence with the South line of the graveyard, S. 79°-58'-34" W., 117.17 feet to a 5/8 inch diameter capped re-bar set on the South line of Logan County's 1 3/5 acre tract.

Thence with the South line of Logan County's 1 3/5 acre tract, S. 69°-38'-42" W., 132.19 feet to a 5/8 inch diameter capped re-bar set. Said capped re-bar set being the Southwest corner of Logan County's 1 3/5 acre tract.

Thence with the West line of Logan County's 1 3/5 acre tract, N. 13°-54'-00" W., 23.76 feet to a 5/8 inch diameter capped re-bar set. Said capped re-bar set being the Southwest corner of the graveyard and the Southeast corner of a 0.19 acre tract which is presently in the name of the Trustees of Stokes Township (D.B. Vol. 131, pg. 127).

Thence with the South line of the Trustees 0.19 acre tract and the south line extended, S. 79°-58'-34" W., 75.43 feet to a 5/8 inch diameter capped re-bar set on the West line of Ash Avenue (recorded plat of Chippewa Park No. 2).

Thence with the West line of Ash Avenue, N. 6°-54'-00" W., 174.39 feet to a mag nail w/disk set on the centerline of State Route 235. Said mag nail w/disk being State Route 235 centerline station 205+88.28.

Thence with the centerline of State Route 235, N. 63°-00'-55" E., 319.44 feet to a mag nail w/disk set. Said mag nail w/disk being State Route 235 centerline station 209+07.72 and is the Northeast corner of Logan County's 1 3/5 acre tract.

Thence with the East line of Logan County's 1 3/5 acre tract, S. 30°-30'-48" E., 30.06 feet to the point of beginning.

The above described real estate encompasses 1.850 acres more or less. The acreage of the above described tract is further broken down as follows:

1.556 acres in the name of Logan County of which 0.002 acre being part of Barnes' 1.565 acre tract, 0.188 acre being part of Ranes' 0.26 acre tract, 0.151 acre being part of Delaware Path, 0.047 acre being part of Nacoma Path, and 0.185 acre being part of State Route 235.

0.195 acre in the name of The Trustees of Stokes Township of which 0.070 acre being part of Ranes' 0.26 acre tract, 0.048 acre being part of Ash Avenue, 0.001 acre being part of Nacoma Path, and 0.018 acre being part of State Route 235.

6391 1D-2

0.025 acre encompassed by an area of unknown ownership of which 0.014 acre being part of Nacoma Path.

0.053 acre encompassed within Ash Avenue.

0.021 acre encompassed within State Route 235.

Basis of bearing being Ash Avenue (N. 6°-54'-00" W.) as shown on the recorded plat of Chippewa Park No. 2 (plat cabinet A; slide 184).

Caps placed on re-bars set are stamped "Logan County Engineer."

The above description was prepared from an actual field survey performed by the Logan County Engineers Office in November and December of 1997.



Curtis D. Dill
Curtis D. Dill
Deputy Surveyor
Logan County Engineers Office
Registered Surveyor No. 7310

LOGAN COUNTY ENGINEERS OFFICE
6391 1D3

REC'D 3-3-99 OK GCH

**GHORMLEY CEMETERY SURVEY
STOKES TOWNSHIP
LOGAN COUNTY, OHIO
V.M.S. 12276
NOVEMBER – DECEMBER 1997**

The following described real estate is found in Stokes Township, Logan County, Ohio, and is part of V.M.S. 12276. Said real estate being that 0.26 acre tract which was deeded by the Trustees of Stokes Township to Gordon and Fern Acheson recorded in Deed Book Volume 197, page 385. Said 0.26 acre tract is presently in the name of Robert L. Ranes etux (O.R. Vol. 182; pg. 380) and is more particularly described as follows:

Beginning at a 5/8 inch diameter capped re-bar set on the intersection of the East line of Ash Avenue with the North line of Macoma Path (now known as Nacoma Path) as shown on the recorded plat of Chippewa Park No. 2 (plat cabinet A; slide 184). Said re-bar set being the Northwest corner of Chippewa Park No. 2 and is the Southwest corner of said Ranes 0.26 acre tract.

Thence with the East line of Ash Avenue, N. 6°-54'-00" W., 75.00 feet to a 5/8 inch diameter capped re-bar set on the Northwest corner of said 0.26 acre tract.

Thence parallel to Nacoma Path, N. 78°-41'-19" E., 150.00 feet to a 5/8 inch diameter capped re-bar set on the Northeast corner of said 0.26 acre tract. The above described line passes through a 5/8 inch diameter capped re-bar set at 36.10 feet.

Thence parallel to Ash Avenue, S. 6°-54'-00" E., 75.00 feet to a 5/8 inch diameter capped re-bar set on the North line of Nacoma Path. Said re-bar set being the Southeast corner of said 0.26 acre tract.


Thence with the North line of Nacoma Path, S. 78°-41'-19" W., 150.00 feet to the point of beginning. The above described line passes through a 5/8 inch diameter capped re-bar set at 104.75 feet.

The above described tract contains 0.258 acre more or less.

Basis of bearing being Ash Avenue (N. 6°-54'-00" W.) as shown on the recorded plat of Chippewa Park No. 2 (plat cabinet A; slide 184).

Caps placed on re-bars set are stamped "Logan County Engineer".

The above description was prepared from an actual field survey performed by the Logan County Engineers Office in November and December of 1997.


Curtis D. Dill
Deputy Surveyor
Logan County Engineers Office
Registered Surveyor No. 7310



6391 1D4

Rec'd 3-3-99 OKGCH

GHORMLEY CEMETERY SURVEY
STOKES TOWNSHIP
LOGAN COUNTY, OHIO
V.M.S. 12276
NOVEMBER – DECEMBER 1997

The following described real estate is found in Stokes Township, Logan County, Ohio, and is part of V.M.S. 12276. Said real estate being part of a 0.26 acre tract which is presently in the name of Robert L. Ranes etux (O.R. Vol. 182, pg. 380). Said Part of 0.26 acre tract is more particularly described as follows:

Beginning for reference at a 5/8 inch diameter capped re-bar set on the intersection of the East line of Ash Avenue with the North line of Macoma Path (now known as Nacoma Path) as shown on the recorded plat of Chippewa Park No. 2 (plat cabinet A; slide 184). Said re-bar set being the Northwest corner of Chippewa Park No. 2 and is the Southwest corner of Ranes 0.26 acre tract.

Thence with the North line of Nacoma Path and the South line of Ranes' 0.26 acre tract, N. 78°-41'-19" E., 45.25 feet to a 5/8 inch diameter capped re-bar set on the West line of Logan County's 1 3/5 acre tract (D.B. Vol. 33; pg. 19). Said capped re-bar being the true point of beginning for this description.

Thence with the West line of Logan County's 1 3/5 acre tract and through Ranes' 0.26 acre tract, N. 13°-54'-00" W., 74.85 feet to a 5/8 inch diameter capped re-bar set on the North line of Ranes' 0.26 acre tract.

Thence with Ranes' North line, N. 78°-41'-19" E., 113.90 feet to a 5/8 inch diameter capped re-bar set on the Northeast corner of Ranes' 0.26 acre tract.

Thence with Ranes' East line, S. 6°-54'-00" E., 75.00 feet to a 5/8 inch diameter capped re-bar set on the North line of Nacoma Path. Said re-bar set being the Southeast corner of Ranes' 0.26 acre tract.

Thence with Ranes' South line and the North line of Nacoma Path, S. 78°-41'-19" W., 104.75 feet to the point of beginning.

The above described tract contains 0.188 acre more or less.

Basis of bearing being Ash Street (N. 6°-54'-00" E.) as shown on the recorded plat of Chippewa Park No. 2 (plat cabinet A; slide 184).

Caps placed on re-bars set are stamped "Logan County Engineer".

The above description was prepared from an actual field survey performed by the Logan County Engineers Office in November and December of 1997.

Curtis D. Dill
Curtis D. Dill
Deputy Surveyor
Logan County Engineers Office
Registered Surveyor No. 7310



6391 175

Rec'd 3-3-99 OK GCH

GHORMLEY CEMETERY SURVEY
STOKES TOWNSHIP
LOGAN COUNTY, OHIO
V.M.S. 12276
NOVEMBER - DECEMBER 1997

The following described real estate is found in Stokes Township, Logan County, Ohio and is part of V.M.S. 12276. Said real estate being part of Nelson C. Barnes' 1.565 acre tract which is recorded in Official Record Volume 123, page 698. Said part of 1.565 acre tract is more particularly described as follows:

Beginning for reference at a right of way monument found on the South side of State Route 235. Said right of way monument being 30.00 feet right of station 212+67.38. Said right of way monument shown as being 30.00 feet right of centerline station 212+66.6 on page 4 of Logan County S.H. 232 Section A R/W plans (L-17).

Thence with the South right of way line of State Route 235 and the North line of Nelson C. Barnes' 1.565 acre tract, S. 63°-00'-55" W., 357.81 feet to a 5/8 inch diameter capped re-bar set on the East line of Logan County's 1 3/5 acre tract (D.B. Vol. 33, pg. 19). Said capped re-bar set being the true point of beginning for this description.

Thence with the East line of Logan County's 1 3/5 acre tract and through Barnes' 1.565 acre tract, S. 30°-30'-48" E., 18.68 feet to a 5/8 inch diameter capped re-bar set on the West line of Barnes' 1.565 acre tract.

Thence with Barnes' West line, N. 53°-06'-11" W., 20.77 feet to a point on the South right of way line of State Route 235. The above described line passes through a railroad spike found at 20.39 feet.

Thence with the South right of way line of State Route 235 and Barnes' North line, N. 63°-00'-55" E., 7.99 feet to the point of beginning.

The above described tract contains 0.002 acre more or less.

Basis of bearing being Ash Avenue (N. 6°-54'-00" W.) as shown on the recorded plat of Chippewa Park No. 2 (plat cabinet A; slide 184).

Caps placed on re-bars set are stamped "Logan County Engineer."

The above description was prepared from an actual field survey performed by the Logan County Engineers Office in November and December of 1997.

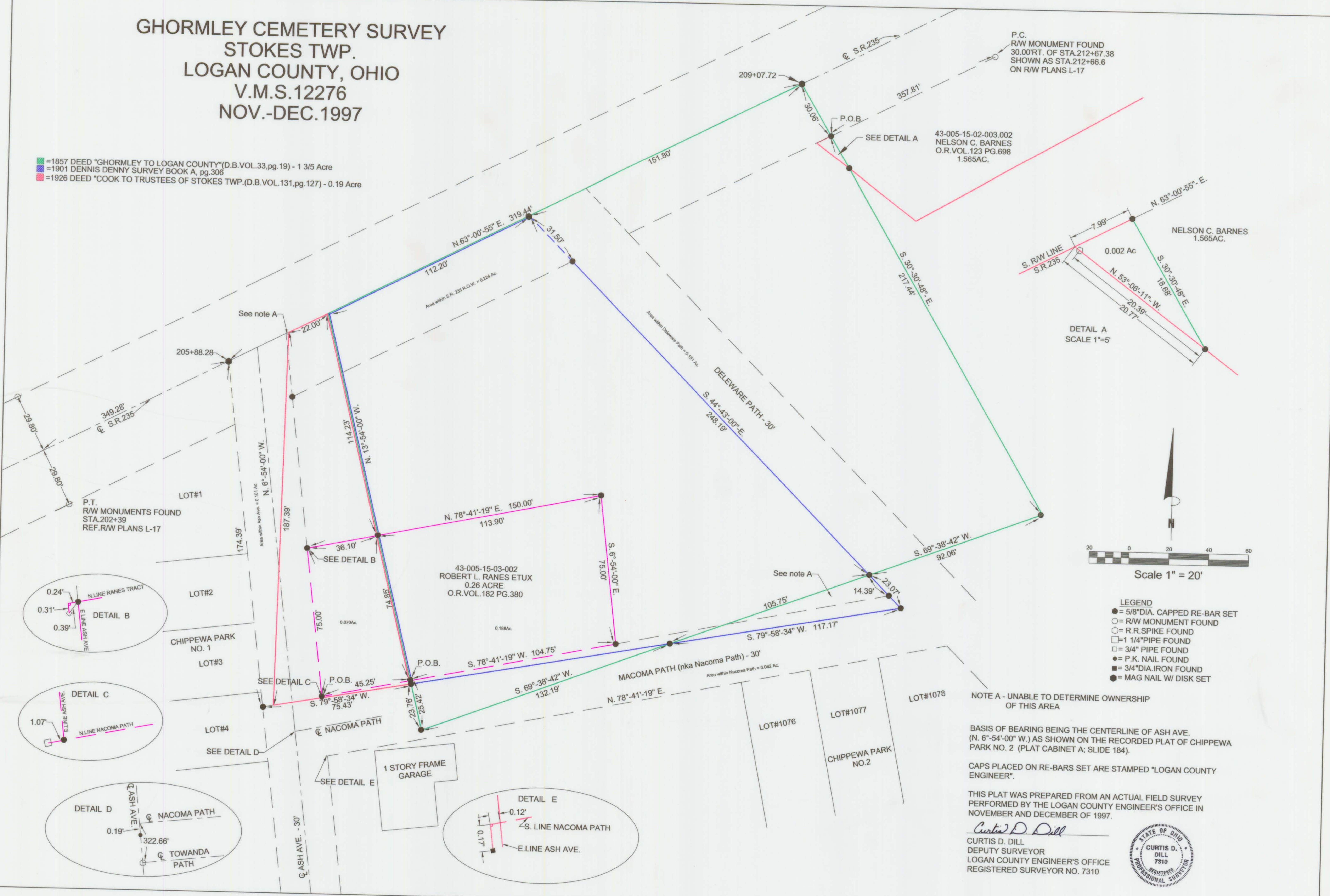
Curtis D. Dill
Curtis D. Dill
Deputy Surveyor
Logan County Engineers Office
Registered Surveyor No. 7310



6391 1D6

GHORMLEY CEMETERY SURVEY
STOKES TWP.
LOGAN COUNTY, OHIO
V.M.S.12276
NOV.-DEC.1997

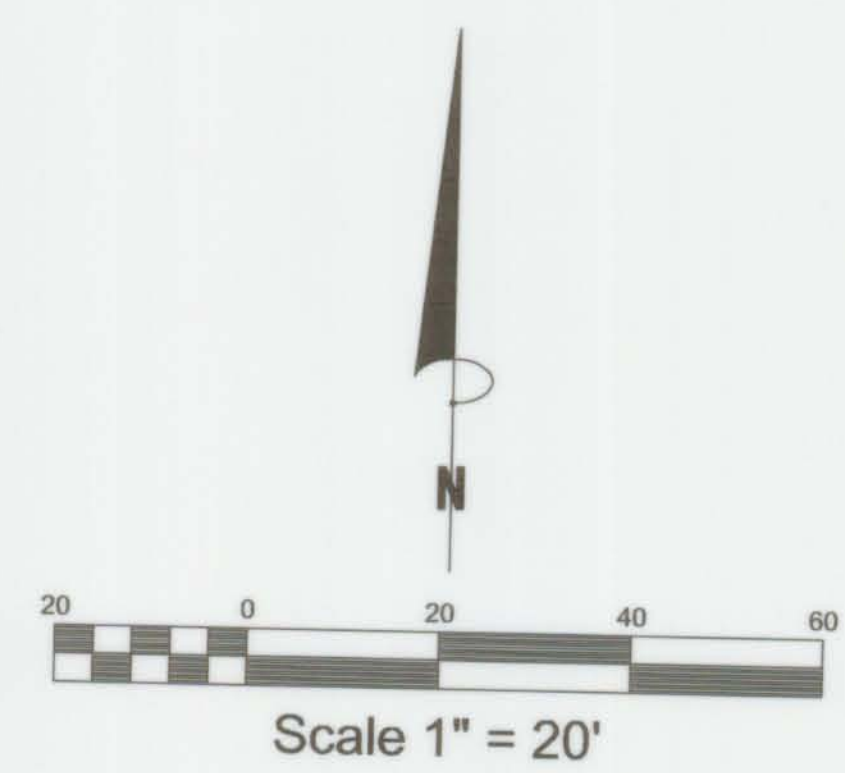
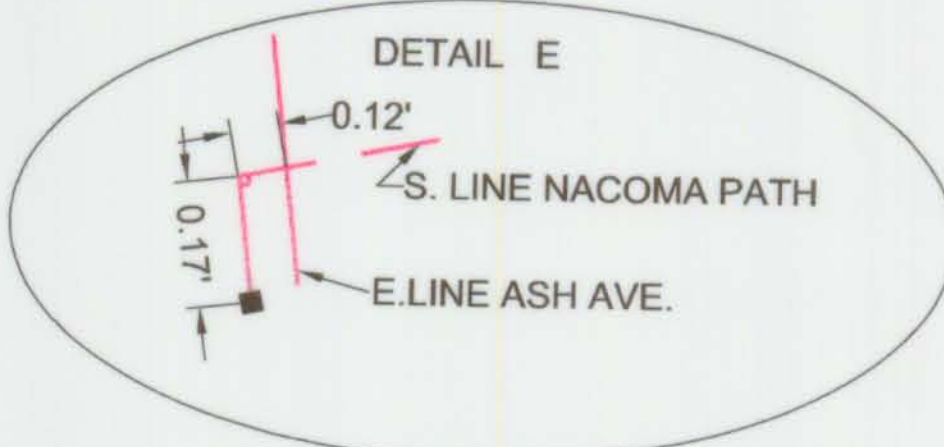
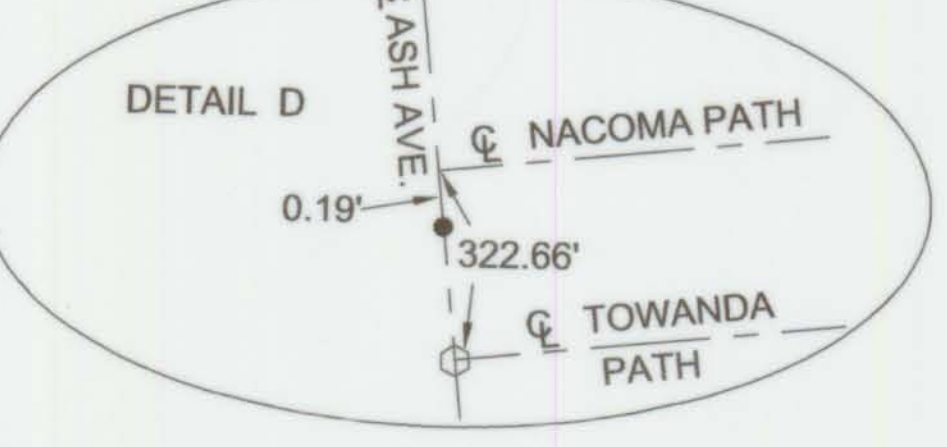
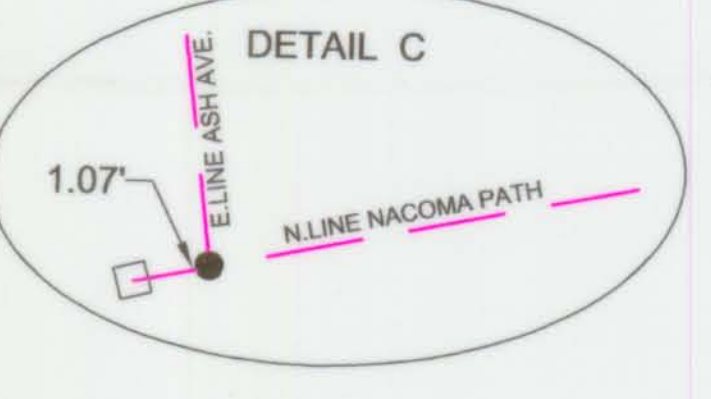
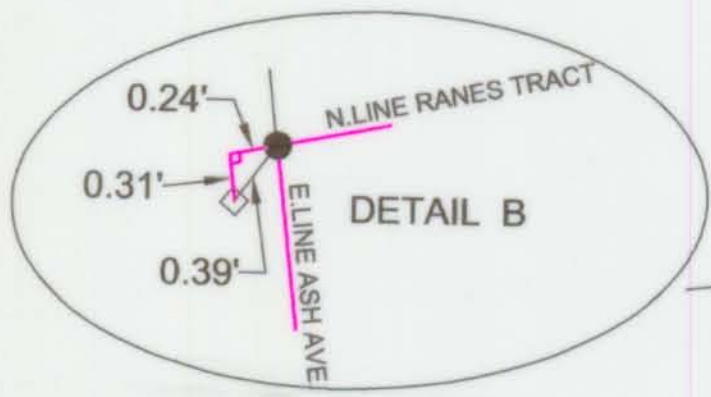
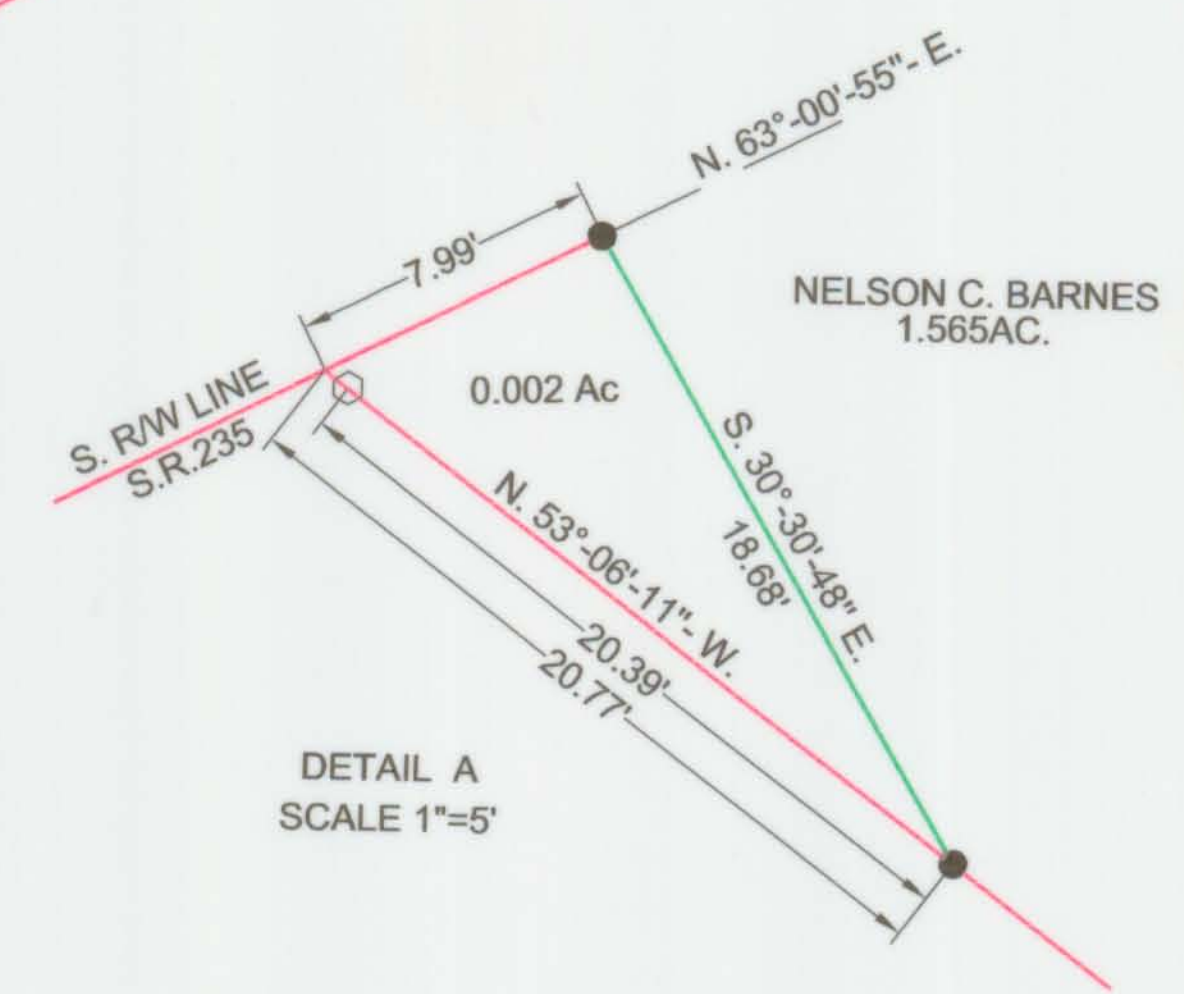
- = 1857 DEED "GHORMLEY TO LOGAN COUNTY" (D.B. VOL. 33, PG. 19) - 1 3/5 Acre
- = 1901 DENNIS DENNY SURVEY BOOK A, PG. 306
- = 1926 DEED "COOK TO TRUSTEES OF STOKES TWP." (D.B. VOL. 131, PG. 127) - 0.19 Acre



P.C.
 R/W MONUMENT FOUND
 30.00' RT. OF STA. 212+67.38
 SHOWN AS STA. 212+66.6
 ON R/W PLANS L-17

43-005-15-02-003.002
 NELSON C. BARNES
 O.R. VOL. 123 PG. 698
 1.565 AC.

43-005-15-03-002
 ROBERT L. RANES ET UX
 0.26 ACRE
 O.R. VOL. 182 PG. 380



- LEGEND**
- = 5/8" DIA. CAPPED RE-BAR SET
 - = R/W MONUMENT FOUND
 - = R.R. SPIKE FOUND
 - = 1 1/4" PIPE FOUND
 - = 3/4" PIPE FOUND
 - = P.K. NAIL FOUND
 - = 3/4" DIA. IRON FOUND
 - = MAG NAIL W/ DISK SET

NOTE A - UNABLE TO DETERMINE OWNERSHIP OF THIS AREA

BASIS OF BEARING BEING THE CENTERLINE OF ASH AVE. (N. 6°-54'-00" W.) AS SHOWN ON THE RECORDED PLAT OF CHIPPEWA PARK NO. 2 (PLAT CABINET A; SLIDE 184).

CAPS PLACED ON RE-BARS SET ARE STAMPED "LOGAN COUNTY ENGINEER".

THIS PLAT WAS PREPARED FROM AN ACTUAL FIELD SURVEY PERFORMED BY THE LOGAN COUNTY ENGINEER'S OFFICE IN NOVEMBER AND DECEMBER OF 1997.

Curtis D. Dill
 CURTIS D. DILL
 DEPUTY SURVEYOR
 LOGAN COUNTY ENGINEER'S OFFICE
 REGISTERED SURVEYOR NO. 7310

