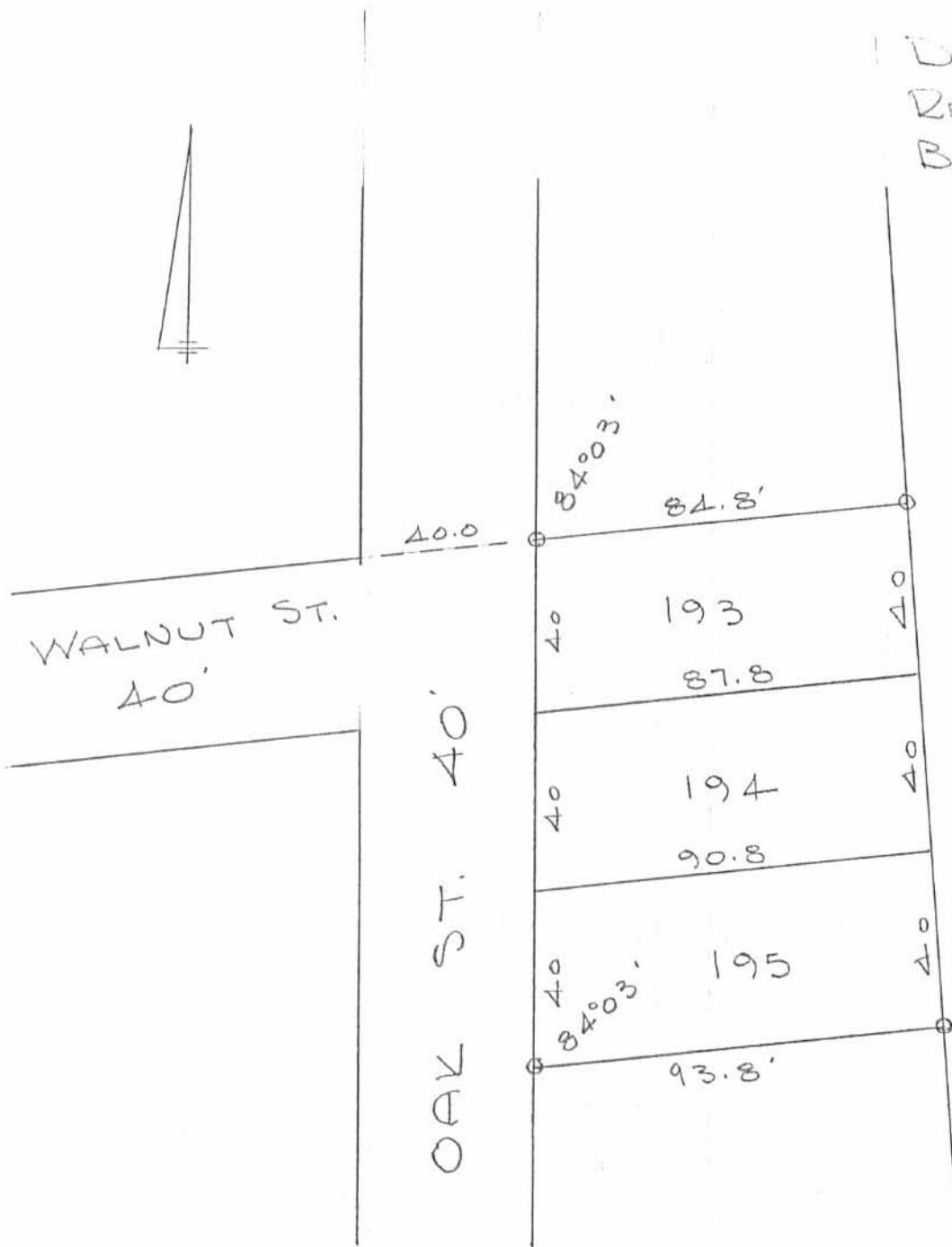


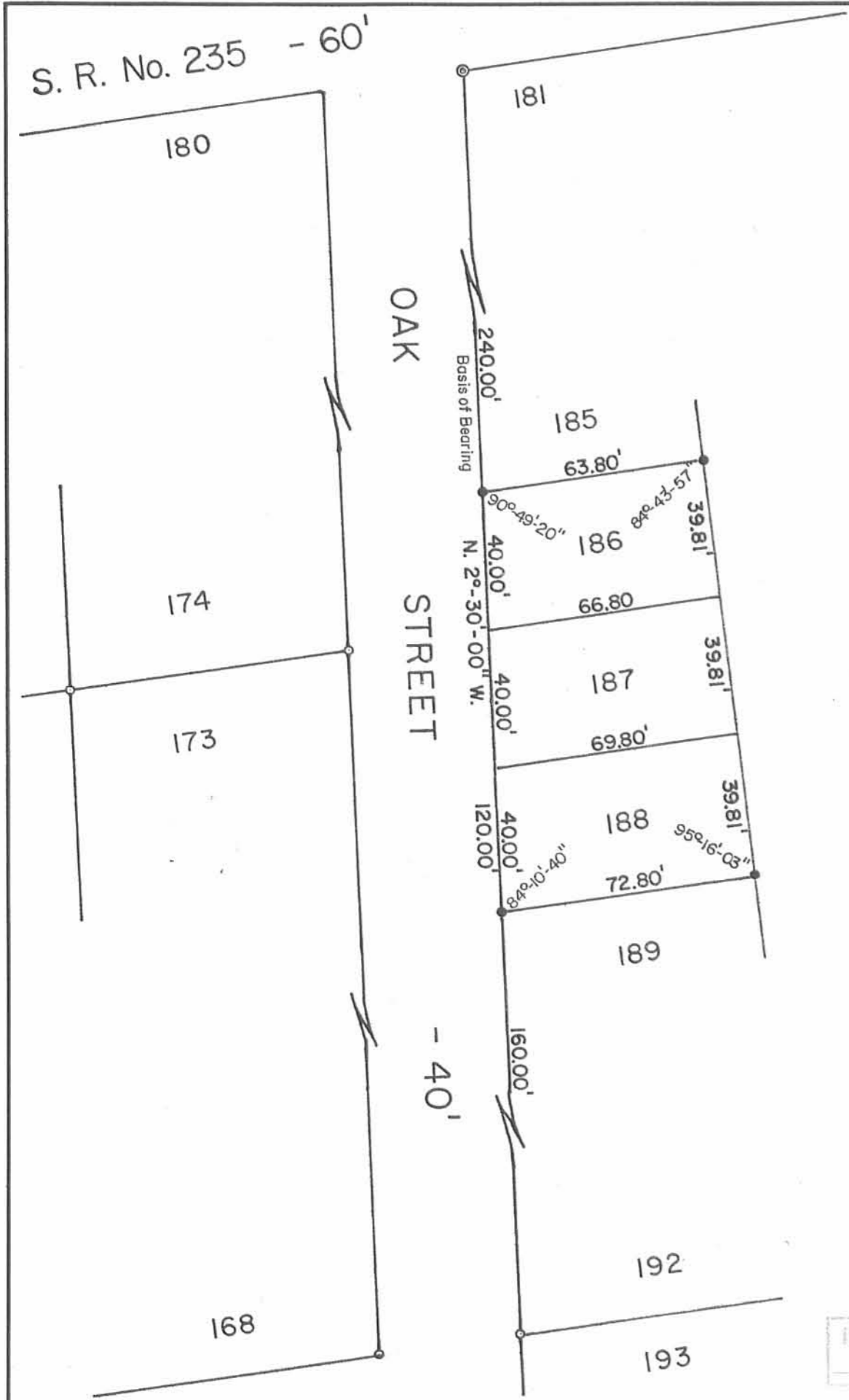
DAN L. DODSON
REG. SURVEYOR 4270
BELLEFONTAINE, OHIO



SURVEY OF LOTS 193-194-195
AYONDALE PARK ALLOT. No 4
STOKES TOWNSHIP
LOGAN COUNTY, OHIO

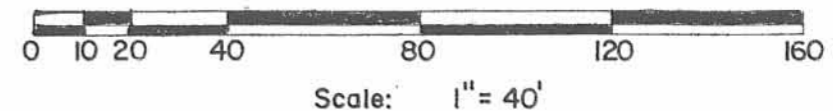
SEPTEMBER 12, 1970
SCALE 1" = 40
O = 5/8" ϕ BAR SET

INDEXED ON MAP
6483 1P



Randall L. Phillips et ux
 O. R. No. 109 P. 635 (6-22-1990)
 43-005-16-20-001,000
 Original 41.84 Acres

INDEXED ON MAP
 6483 2P



- SYMBOLS:
- ⊙ - 1" Iron Pipe Fd.
 - - 5/8" Rebars Fd.
 - - 5/8" x 30" Rebars Set.

Reference:
 Avondale Park Allotment No. Four.
 Plat Cab. A, Slide 248 (3-25-1931).

Survey of Lots No. 186, 187 & 188,
 Avondale Park Allotment No. Four, V.M.S. No. 12276,
 Stokes Township, Logan County, Ohio.

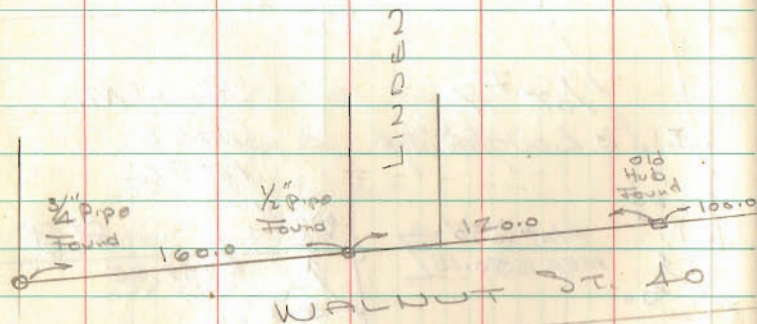
SCALE: 1" = 40'	APPROVED BY:	DRAWN BY: DEG
DATE: 11-21-2003		REVISED:

Daniel E. Gilbert
 Daniel E. Gilbert, P.S.
 Reg. Sur. No. 5402

DRAWING NUMBER
 2003-022

LOT 193-194-195
AVONDALE 4

0 = 5/8" ϕ Bar Jet



INDEXED ON MAP
6483

Dodson
Artix

9/12/20 53

