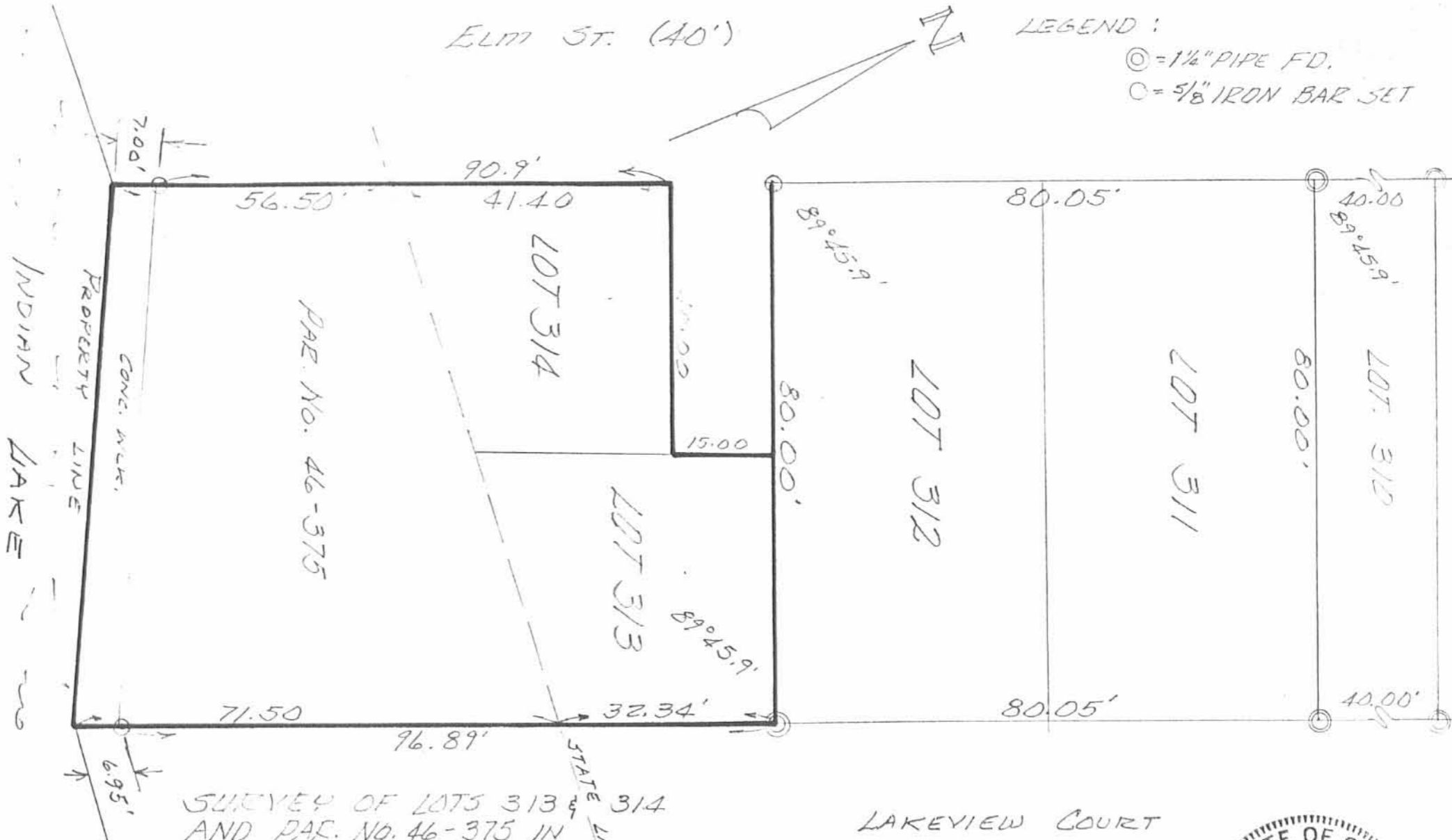
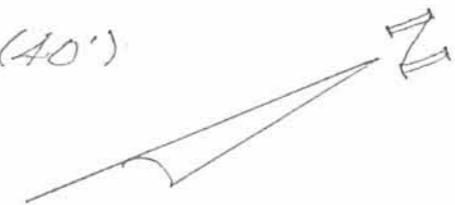


ELM ST. (40')

LEGEND :

⊙ = 1 1/2" PIPE FD.

○ = 5/8" IRON BAR SET



SURVEY OF LOTS 313 & 314
AND PAR. NO. 46-375 IN
AVONDALE NO. 3
LOGAN COUNTY, OHIO

FOR
CARL AULT
JULY, 1981
SCALE: 1" = 20'

LAKEVIEW COURT



LESLIE H. GEESLIN
RUSHSVANIA, OHIO

INDEXED ON MAP

66521P

5-22-10

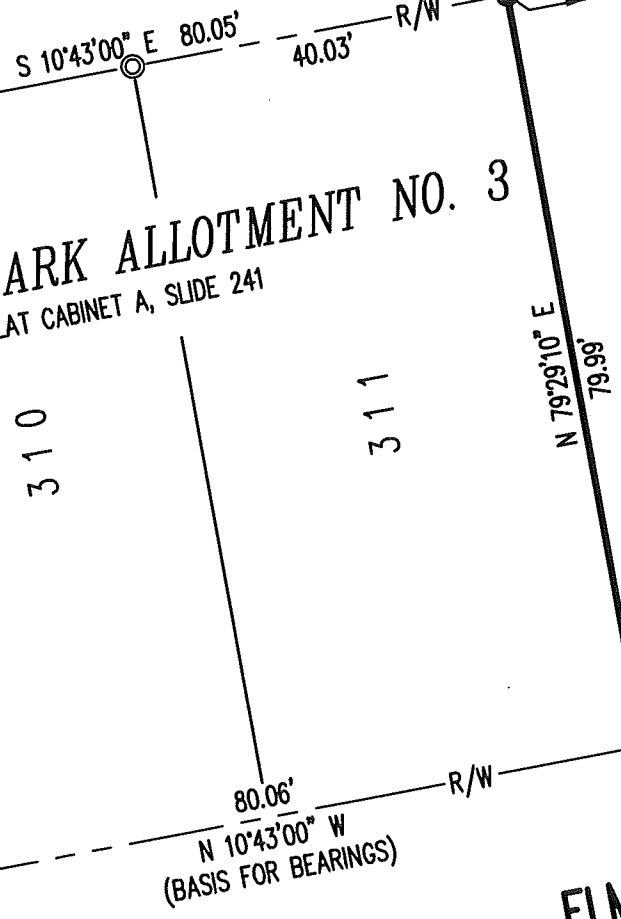
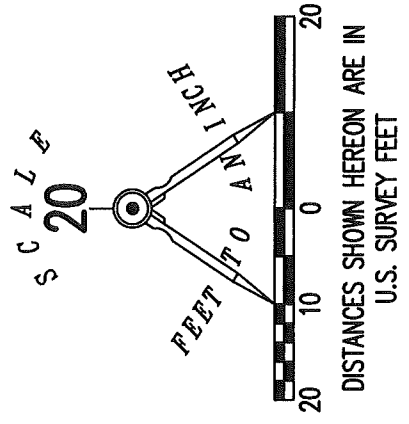
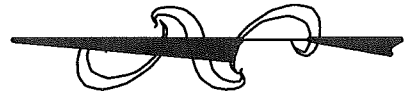
APPROVED

RETRACEMENT SURVEY LOCATED IN VIRGINIA MILITARY SURVEY 12276 STOKES TOWNSHIP LOGAN COUNTY, OHIO

AVONDALE PARK ALLOTMENT NO. 3 PLAT CABINET A, SLIDE 241

LAKEVIEW COURT (WIDTH VARIES)

INDIAN LAKE RESERVOIR LANDS NO. 2 PLAT CABINET A, SLIDE 471



ELM STREET (40')

312
MARK A. EWING AND
GERALDINE C. EWING
O.R. 1151, PG. 956
PARCEL I

MARK A. EWING AND
GERALDINE C. EWING
O.R. 1151, PG. 956
PARCEL III

MARK A. EWING AND
GERALDINE C. EWING
O.R. 1151, PG. 956
PARCEL II

46-375
MARK A. EWING AND
GERALDINE C. EWING
O.R. 1151, PG. 956

LEGEND:

- ⊕ 1-1/4 INCH IRON PIPE FOUND
- ⊙ 3/4 INCH IRON PIPE FOUND
- 5/8 INCH IRON ROD SET WITH PLASTIC I.D. CAP STAMPED "L-8533"

R/W = RIGHT-OF-WAY
C/L = CENTER-LINE

DEED AND SURVEY REFERENCES:

- O.R. 1151, PG. 956
- AVONDALE PARK ALLOTMENT NO. 3
PLAT CABINET A, SLIDE 241
- INDIAN LAKE RESERVOIR LANDS NO. 2
PLAT CABINET A, SLIDE 471
- SURVEY BY LESLIE H. GEESLIN, P.S. 5248,
ENTITLED "SURVEY OF LOTS 313 & 314 AND
PAR. NO. 46-375 IN AVONDALE NO. 3",
DATED JULY, 1981.
- LOGAN COUNTY MAP ROOM FILE 6652

BASIS FOR BEARINGS:

THE BASIS FOR BEARINGS, SHOWN HEREON,
IS AN ASSUMED BEARING FOR THE NORTHEASTERLY
RIGHT-OF-WAY LINE FOR ELM STREET, BEING
S 10°43'00" E.

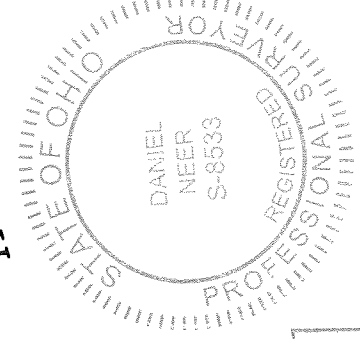
THIS SURVEY WAS PREPARED IN THE ABSENCE OF
A COMPLETE AND ACCURATE TITLE SEARCH AND
DOES NOT GUARANTEE TITLE.

2 WORKING DAYS

BEFORE YOU DIG

CALL TOLL FREE **800-362-2764**

OHIO UTILITIES PROTECT OR SERVICE



DANIEL A. NEER
PROFESSIONAL SURVEYOR NO. 8533
APRIL 27, 2018

COPYRIGHT 2018 BY:
LEE SURVEYING & MAPPING CO.
117 North Madriver Street
BELLEFONTAINE, OHIO 43311
(937) 593-7335
WWW.LSMINC.US
surveys@lsminc.us

INDEXED ON MAP
6652

KSS D0318 63660318 L-6366-3