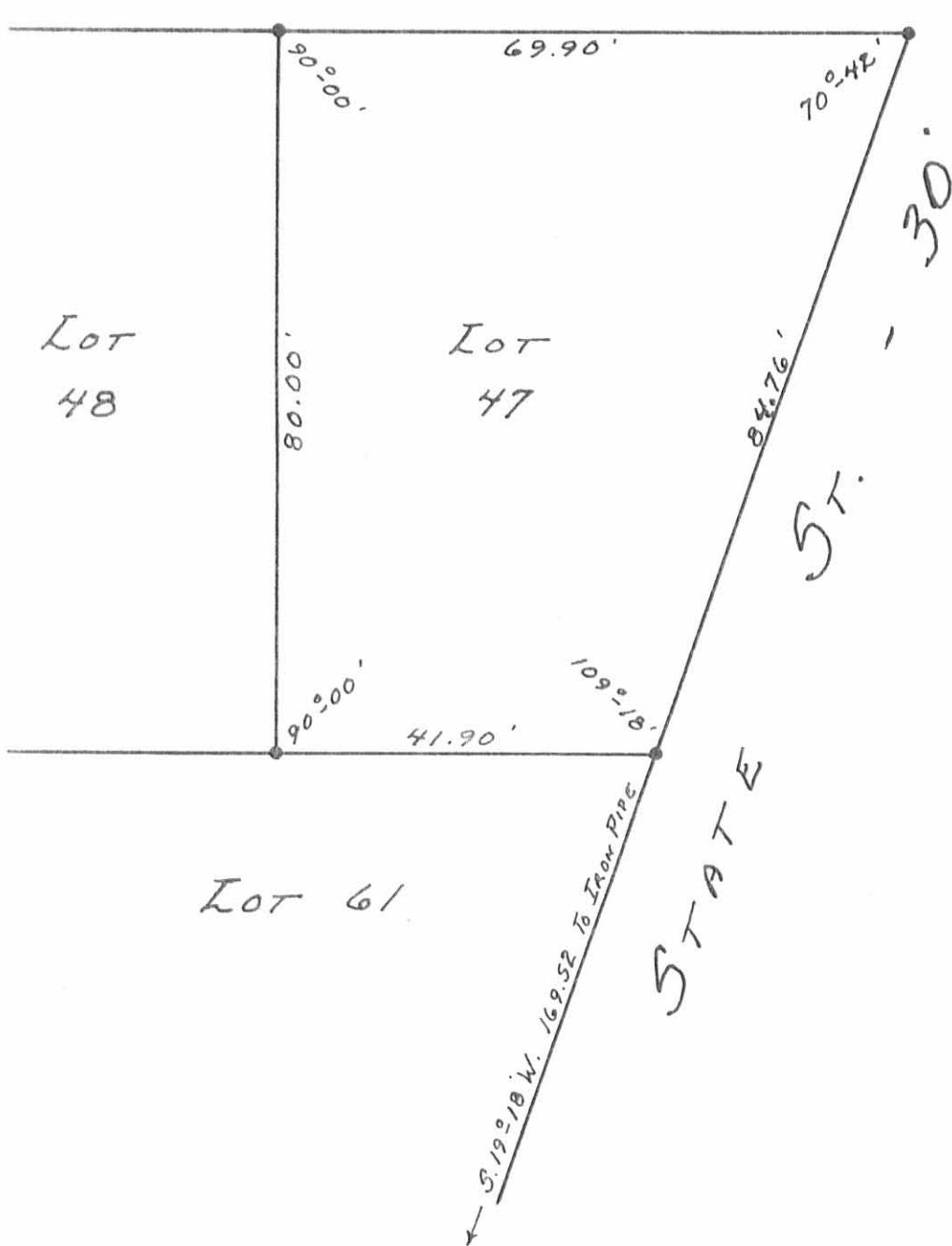


DUFF ROAD - 40'



• - 5/8"  $\phi$  x 30" REBARS :

67211P

INDEXED ON MAP

SURVEYED AND PLATTED BY:  
 DANIEL E. GILBERT, P.S.  
 REG. SUR. NO. 5402  
 1041 N. MAIN ST.  
 BELLEFONTAINE, OHIO 43311

SURVEY OF LOT 47  
 LAKESIDE ALLOTMENT  
 SECTION 27 T.6 S. R.8 E.  
 STOKES TOWNSHIP  
 LOGAN COUNTY, OHIO  
 MARCH 13, 1982  
 SCALE: 1" = 20'