

Lee Surveying and Mapping Co.



Farm Surveys • Lot Surveys • Topography • Subdivisions • Construction Layout

855 EAST SANDUSKY AVENUE
BELLEFONTAINE, OHIO 43311

(513) 593-5780

CLAYTON M. LEE, P.S.
JEFFREY I. LEE, P.S.

FERMON BARNES SURVEY

Lying in V.M.S. 12276, Stokes Township, Logan County, Ohio.

Being 4.33 acres off the south side of that 18.86 acres (Volume 183, Page 174) plus all that State Lot No. 46-332 (1.2814 acres, Volume 323, Page 513). Being more particularly described as follows:

Beginning at a point on the west line of a boat channel marking the northeast corner of said State Lot No. 46-332.

THENCE, with the east and south lines of said State Lot 46-332, the following eight (8) bearings and distances along the boat channel.

S 8°-00'-30" W, a distance of 202.32 feet.

S 2°-34'-30" W, a distance of 61.50 feet.

S 32°-41'-30" W, a distance of 10.82 feet.

N 56°-57'-30" W, a distance of 28.14 feet.

N 72°-06'-30" W, a distance of 119.66 feet.

N 87°-50'-30" W, a distance of 145.10 feet.

S 78°-37'-17" W, a distance of 262.05 feet.

S 63°-41'-30" W, a distance of 62.21 feet to the southwest corner of said State Lot 46-332.

THENCE, with the west line of said state lot and continuing along the west line of the aforementioned 18.86 acre tract, N 0°-58'-31" E, a distance of 51.49 feet, passing the northwest corner of the state lot at 32.58 feet.

THENCE, continuing along the west line of the 18.86 acre tract, N 10°-57'-44" W, a distance of 98.29 feet.

THENCE, N 75°-13'-20" E, a distance of 297.68 feet.

THENCE, N 37°-14'-06" E, a distance of 557.13 feet.

THENCE, N 60°-32'-29" E, a distance of 249.24 feet to the west line of Lake Drive.

THENCE, with the west line of Lake Drive, S 6°-13'-34" E, a distance of 311.93 feet to the southeast corner of the 18.86 acre tract.

THENCE, with the south line of the 18.86 acre tract, S 79°-30'-20" W, a distance of 184.07 feet to an angle in said south line and being on the center-line of the aforementioned boat channel.

THENCE, with said center-line, S 8°-00'-30" W, a distance of 136.45 feet to a point on the north line extended of said State Lot 46-332.

THENCE, with said line extended, S 54°-16'-10" W, a distance of 32.20 feet to the point of beginning. Containing 5.61 acres.

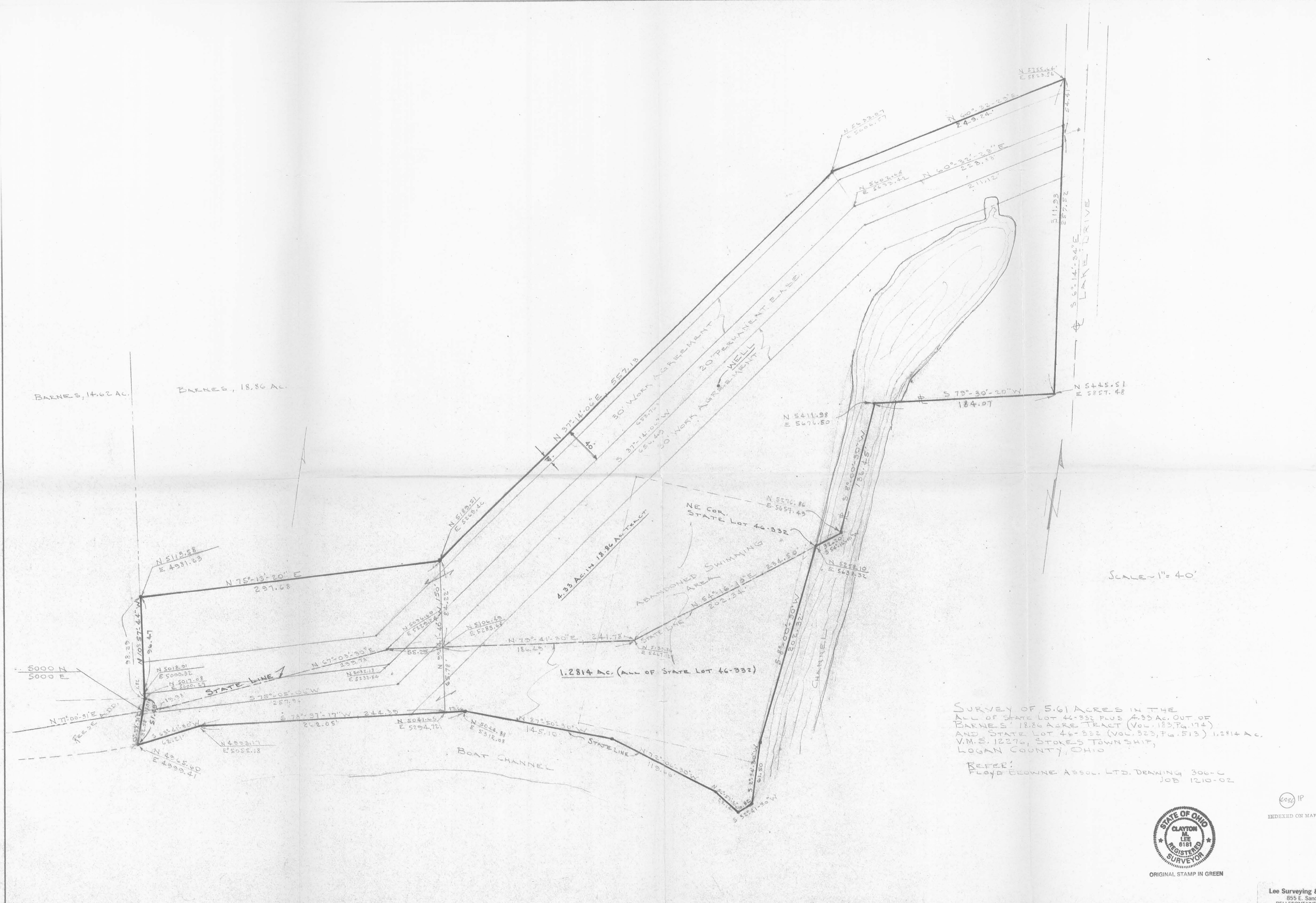


6886 ID

INDEXED ON MAP

Prepared by:

Clayton M. Lee
Clayton M. Lee
Reg. Surveyor No. 6181
9-12-83



BARNES, 14.62 AC.

BARNES, 18.86 AC.

4.33 AC. IN 18.86 AC. TRACT

1.2814 AC. (ALL OF STATE LOT 46-332)

SURVEY OF 5.61 ACRES IN THE ALL OF STATE LOT 46-332 PLUS 4.33 AC. OUT OF BARNES' 18.86 ACRE TRACT (VOL. 183, PG. 174) AND STATE LOT 46-332 (VOL. 323, PG. 513) 1.2814 AC. V.M.S. 12276, STOKES TOWNSHIP, LOGAN COUNTY, OHIO

REFER: FLOYD EROWNE ASSOC. LTD. DRAWING 306-C JOB 1210-02

SCALE - 1" = 40'



ORIGINAL STAMP IN GREEN

INDEXED ON MAP

Lee Surveying & Mapping Co.
855 E. Sandusky Ave.
BELLEFONTAINE, OHIO 43311
(513) 593-5780

AUG. 25, 1983

L-1038-1

REC'D 12-24-07 SML/OC

Lee Surveying and Mapping Co., Inc.

Land Surveys • Topography • Subdivisions • Construction Layout

117 N. Madriver St.
Bellefontaine OH 43311



Phone: (937) 593-7335
Fax: (937) 593-7444

RATHFELDER-MILBURN-BARNES-McDANIEL 17.649 ACRES

Lying in Virginia Military Survey 12276, Stokes Township, Logan County, Ohio.

Being all of the Sonja Rathfelder and Beverly Milburn 18.171 acre tract as deeded and described in Official Record 888, Page 847, Tract II, Parcel 1, Ronald C. Barnes and Gloria J. Barnes, Trustees under the RG Barnes Trust dated September 15, 2006, 18.171 acre tract as deeded and described in Official Record 856, Page 717, Tract II, Parcel 1 and Ronald C. Barnes, Nelson C. Barnes and Nevlyn L. Barnes McDaniel 18.171 acre tract as deeded and described in Official Record 54, Page 519 of the Logan County Records of Deeds and being more particularly described as follows:

Beginning on a MAG nail set on the intersection of the center-lines of Ohio Route 235 and Lake Drive.

THENCE, with the center-line of Lake Drive (40 feet wide), S 6°-14'-34"E, a distance of 830.24 feet to a railroad spike found.

THENCE, with the north line of the Lloyd R. Few, Jr., 1.28 acre tract (O.R. 27, Pg. 536), S 78°-30'-53"W, a distance of 20.08 feet to a 5/8 inch iron rod found on the west right-of-way of Lake Drive.

THENCE, with the west right-of-way of Lake Drive and the east line of the Barnes Land, Inc., 5.61 acre tract (Vol. 408, Pg. 470, Tract II), N 6°-14'-34" W, a distance of 311.93 feet to a 5/8 inch iron rod set.

THENCE, with the lines of the said 5.61 acre tract, the following three courses:

S 60°-32'-29"W, a distance of 249.24 feet to a 5/8 inch iron rod set.

S 36°-29'-50"W, a distance of 568.43 feet to a 5/8 inch iron rod found.

S 75°-27'-22"W, a distance of 295.35 feet to a 5/8 inch iron rod set.

THENCE, with the east lines of the Nelson C. Barnes 13.829 acre tract (Vol. 407, Pg. 453), the Nelson C. Barnes 1.000 acre tract (O.R. 123, Pg. 701), the said 13.829 acre tract and the Sonja Rathfelder and Beverly Milburn, et al, 1 acre tract (O.R. 888, Pg. 847, Tract I), N 10°-51'-51"W, a distance of 976.62 feet to a railroad spike set on the center-line of Ohio Route 235, passing a 5/8 inch iron rod found at 287.52 feet and a 5/8 inch iron rod set at 946.61 feet.



Lee Surveying and Mapping Co., Inc.

Land Surveys • Topography • Subdivisions • Construction Layout

117 N. Madriver St.
Bellefontaine OH 43311



Phone: (937) 593-7335
Fax: (937) 593-7444

THENCE, with the center-line of Ohio Route 235 (60 feet wide),
N 77°-47'-36"E, a distance of 1011.25 feet to the point of beginning.

Containing 17.649 acres, of which 1.060 acres are within the highway rights-of-way.

The basis for bearings is the center-line of Lake Drive, being S 6°-14'-34"E,
and all other bearings are from angles and distances measured in a field survey by
Lee Surveying and Mapping Co., Inc. on December 13, 2007.



ORIGINAL STAMP IN GREEN

Description prepared by:

A handwritten signature in cursive script that reads 'William K. Bruce'.

William K. Bruce
Professional Surveyor 7437
December 14, 2007

1038117

INDEXED ON MAP

4886 2D-2

REC'D 12-24-07 SMY OK

Lee Surveying and Mapping Co., Inc.

Land Surveys • Topography • Subdivisions • Construction Layout

117 N. Madriver St.
Bellefontaine OH 43311



Phone: (937) 593-7335
Fax: (937) 593-7444

BARNES LAND, INC. 5.619 ACRES

Lying in Virginia Military Survey 12276, Stokes Township, Logan County, Ohio.

Being all of the Barnes Land, Inc., 5.61 acre tract as deeded and described in Volume 408, Page 470 of the Logan County Records of Deeds including all of Lot 46-332 of the Indian Lake Reservoir Lands (Plat Cabinet A, Slide 469) and being more particularly described as follows:

Commencing on a MAG nail set on the intersection of the center-lines of Ohio Route 235 and Lake Drive.

THENCE, with the center-line of Lake Drive (40 feet wide), S 6°-14'-34"E, a distance of 830.24 feet to a railroad spike found.

THENCE, with the north line of the Lloyd R. Few, Jr., 1.28 acre tract (O.R. 27, Pg. 536), S 78°-30'-53"W, a distance of 20.08 feet to a 5/8 inch iron rod found on the west right-of-way of Lake Drive at the TRUE POINT OF BEGINNING.

THENCE, with the north line of the said 1.28 acre tract, S 78°-30'-53"W, a distance of 179.89 feet to a point in the channel, passing a 5/8 inch iron rod set at 129.89 feet.

THENCE, within the channel and with the west lines of the said 1.28 acre tract and the Grant D. Peper 0.369 acre tract (O.R. 153, Pg. 119), S 4°-22'-10"W, a distance of 126.87 feet to a point.

THENCE, crossing the channel, S 53°-45'-06"W, a distance of 44.23 feet to a 5/8 inch iron rod set.

THENCE, along the west line of the channel, the following three courses:

S 7°-26'-06"W, a distance of 202.22 feet to a 5/8 inch iron rod set.

S 2°-00'-06"W, a distance of 61.50 feet to a 5/8 inch iron rod set.

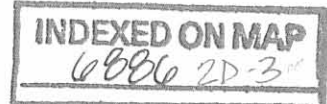
S 32°-07'-06"W, a distance of 10.82 feet to a 5/8 inch iron rod set.

THENCE, with the north line of the channel, the following five courses:

N 57°-31'-54"W, a distance of 28.14 feet to a 5/8 inch iron rod set.

N 72°-40'-54"W, a distance of 119.66 feet to a 5/8 inch iron rod set.

N 88°-24'-54"W, a distance of 145.10 feet to a point, referenced by a 5/8 inch iron rod set bearing N 3°-58'-49"E, a distance of 18.81 feet.



Lee Surveying and Mapping Co., Inc.

Land Surveys • Topography • Subdivisions • Construction Layout

117 N. Madriver St.
Bellefontaine OH 43311



Phone: (937) 593-7335
Fax: (937) 593-7444

S 77°-57'-46"W, a distance of 264.48 feet to a point, referenced by a 5/8 inch iron rod set bearing N 3°-26'-27"W, a distance of 11.56 feet.

S 63°-16'-09"W, a distance of 62.21 feet to a point.

THENCE, with the east lines of Lot 46-331 of the Indian Lake Reservoir Lands and Lot 28 of the Reese Addition (Plat Cabinet A, Slide 272), N 4°-06'-51"W, a distance of 48.00 feet to a 1 inch iron pipe found, passing a 5/8 inch iron rod set at 18.00 feet.

THENCE, with the east line of the Nelson C. Barnes 0.791 acre tract (Vol. 402, Pg. 190), N 10°-51'-51"W, a distance of 98.29 feet to a 5/8 inch iron rod set.

THENCE, with the south lines of the Sonja Rathfelder and Beverly Milburn 18.171 acre tract (O.R. 888, Pg. 847, Tract II, Parcel 1), Ronald C. Barnes and Gloria J. Barnes, Trustees under the RG Barnes Trust dated September 15, 2006, 18.171 acre tract (O.R. 856, Page 717, Tract II, Parcel 1) and Ronald C. Barnes, Nelson C. Barnes and Nevlyn L. Barnes McDaniel 18.171 acre tract (O.R. 54, Pg. 519), the following three courses:

N 75°-27'-22"E, a distance of 295.35 feet to a 5/8 inch iron rod found.

N 36°-29'-50"E, a distance of 568.43 feet to a 5/8 inch iron rod set.

N 60°-32'-29"E, a distance of 249.24 feet to a 5/8 inch iron rod set on the west right-of-way of Lake Drive.

THENCE, with the west right-of-way of Lake Drive, S 6°-14'-34"E, a distance of 311.93 feet to the point of beginning.

Containing 5.619 acres.

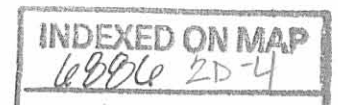
The basis for bearings is the center-line of Lake Drive, being S 6°-14'-34"E, and all other bearings are from angles and distances measured in a field survey by Lee Surveying and Mapping Co., Inc. on December 13, 2007.



Description prepared by:

A handwritten signature in cursive script that reads 'William K. Bruce'.

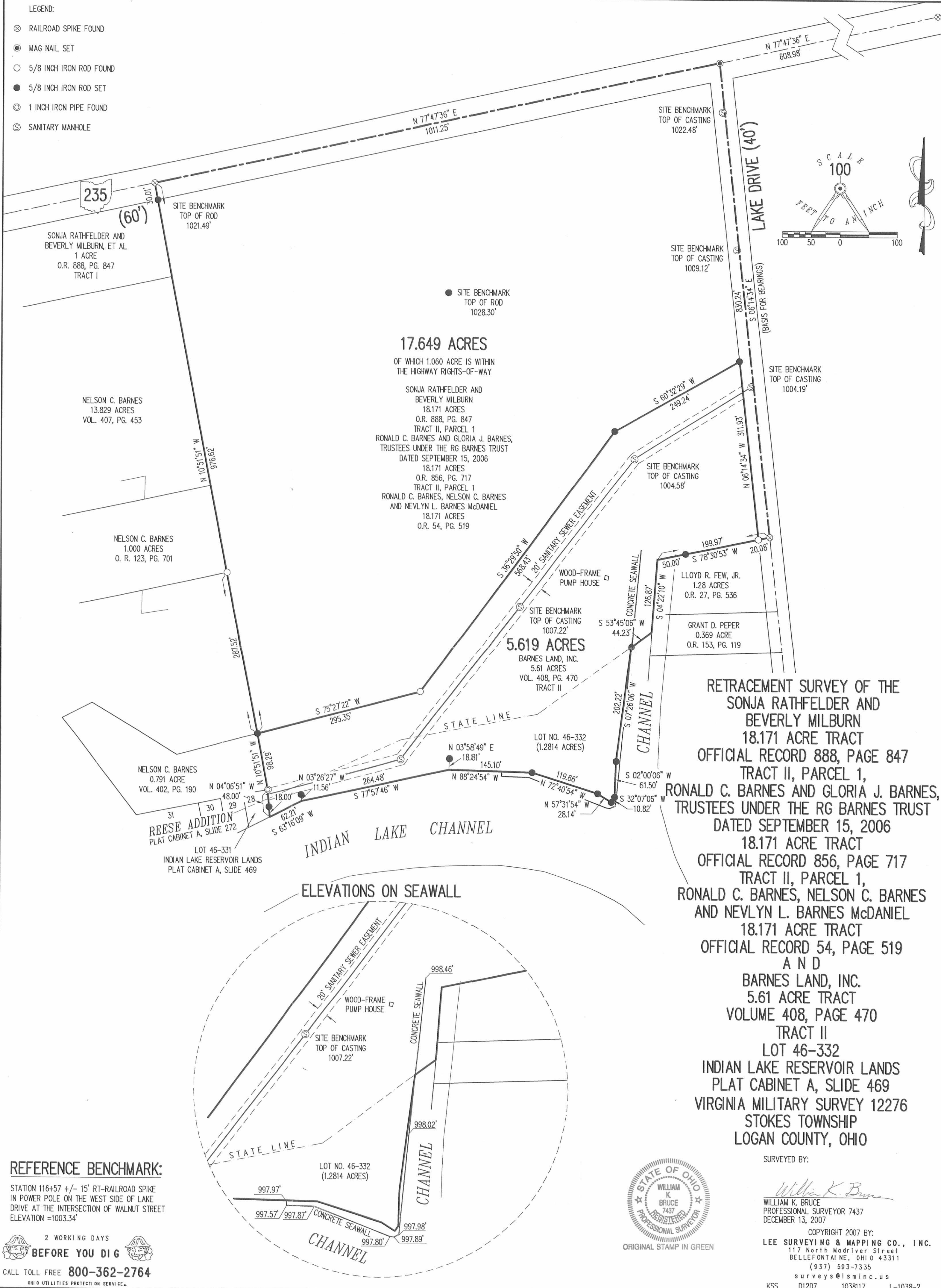
William K. Bruce
Professional Surveyor 7437
December 14, 2007



1038117

LEGEND:

- ⊗ RAILROAD SPIKE FOUND
- MAG NAIL SET
- 5/8 INCH IRON ROD FOUND
- 5/8 INCH IRON ROD SET
- ⊙ 1 INCH IRON PIPE FOUND
- Ⓢ SANITARY MANHOLE



17.649 ACRES

OF WHICH 1.060 ACRE IS WITHIN THE HIGHWAY RIGHTS-OF-WAY

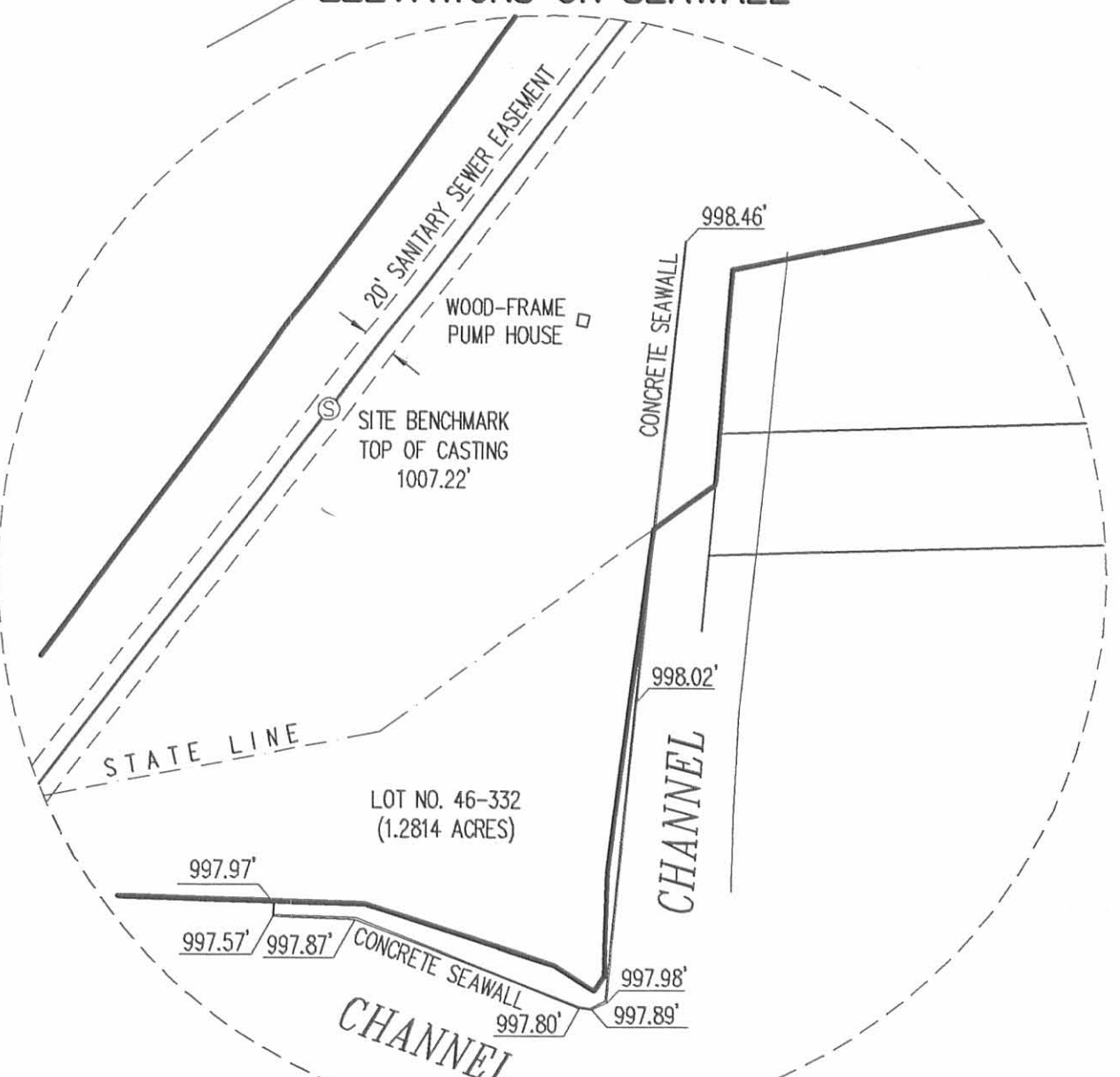
SONJA RATHFELDER AND BEVERLY MILBURN
18.171 ACRES
O.R. 888, PG. 847
TRACT II, PARCEL 1
RONALD C. BARNES AND GLORIA J. BARNES, TRUSTEES UNDER THE RG BARNES TRUST DATED SEPTEMBER 15, 2006
18.171 ACRES
O.R. 856, PG. 717
TRACT II, PARCEL 1
RONALD C. BARNES, NELSON C. BARNES AND NEVLYN L. BARNES McDANIEL
18.171 ACRES
O.R. 54, PG. 519

5.619 ACRES

BARNES LAND, INC.
5.61 ACRES
VOL. 408, PG. 470
TRACT II

RETRACEMENT SURVEY OF THE SONJA RATHFELDER AND BEVERLY MILBURN 18.171 ACRE TRACT OFFICIAL RECORD 888, PAGE 847 TRACT II, PARCEL 1, RONALD C. BARNES AND GLORIA J. BARNES, TRUSTEES UNDER THE RG BARNES TRUST DATED SEPTEMBER 15, 2006 18.171 ACRE TRACT OFFICIAL RECORD 856, PAGE 717 TRACT II, PARCEL 1, RONALD C. BARNES, NELSON C. BARNES AND NEVLYN L. BARNES McDANIEL 18.171 ACRE TRACT OFFICIAL RECORD 54, PAGE 519 AND BARNES LAND, INC. 5.61 ACRE TRACT VOLUME 408, PAGE 470 TRACT II LOT 46-332 INDIAN LAKE RESERVOIR LANDS PLAT CABINET A, SLIDE 469 VIRGINIA MILITARY SURVEY 12276 STOKES TOWNSHIP LOGAN COUNTY, OHIO

ELEVATIONS ON SEAWALL



REFERENCE BENCHMARK:

STATION 116+57 +/- 15' RT-RAILROAD SPIKE IN POWER POLE ON THE WEST SIDE OF LAKE DRIVE AT THE INTERSECTION OF WALNUT STREET ELEVATION = 1003.34'

2 WORKING DAYS BEFORE YOU DIG CALL TOLL FREE 800-362-2764



SURVEYED BY:

William K. Bruce
WILLIAM K. BRUCE
PROFESSIONAL SURVEYOR 7437
DECEMBER 13, 2007

COPYRIGHT 2007 BY:
LEE SURVEYING & MAPPING CO., INC.
117 North Madriver Street
BELLEFONTAINE, OHIO 43311
(937) 593-7335
surveys@lsmcinc.us

KSS D1207 1038117 L-1038-2

INDEXED ON MAP 6800 2P