

INDEXED ON MAP

7119 1P

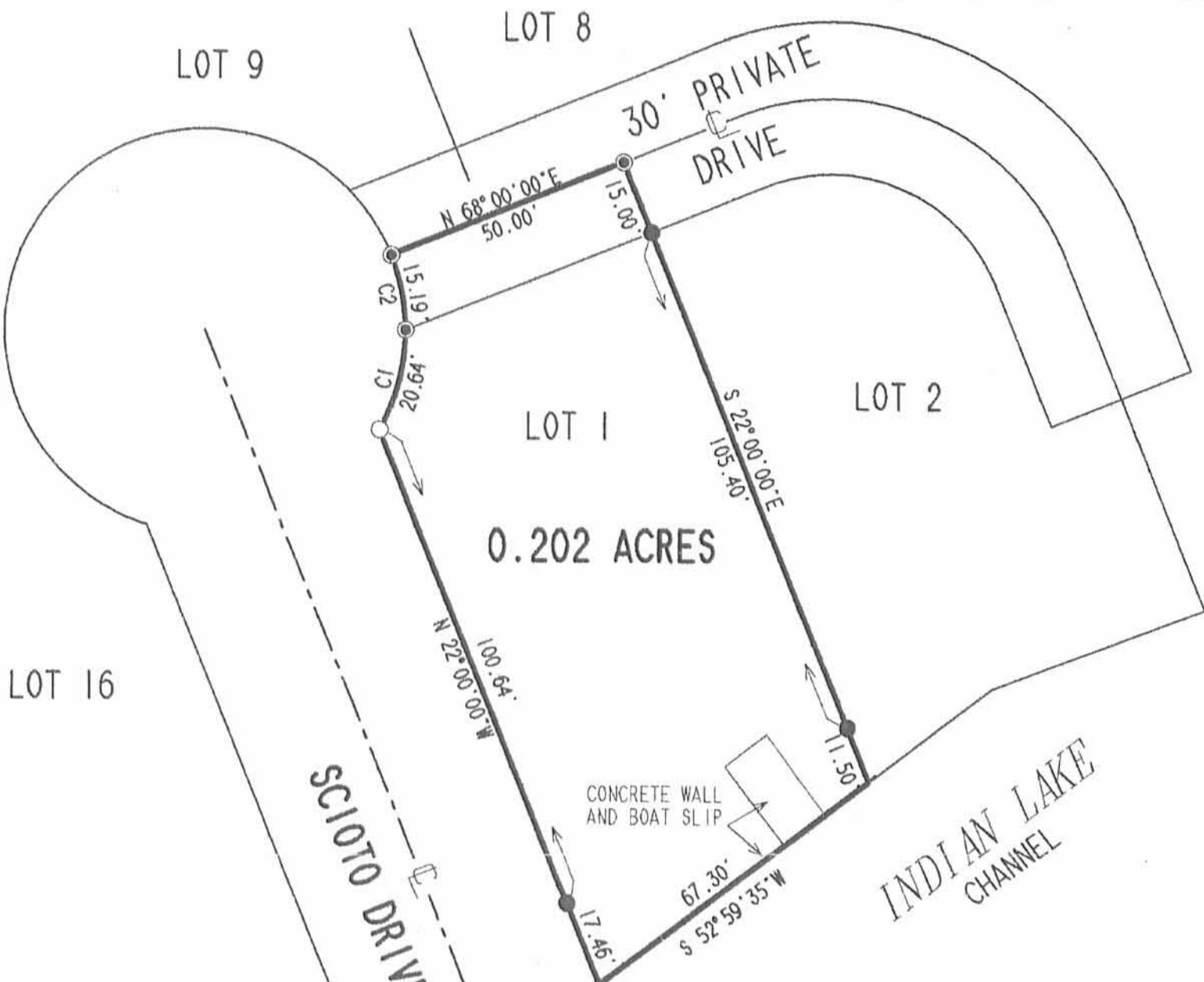
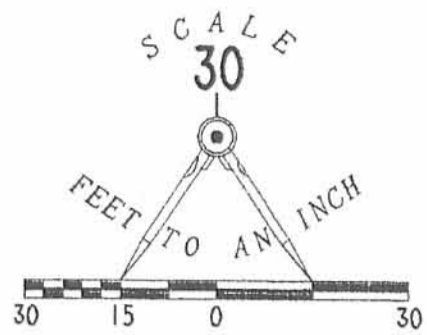
SURVEYED AND PLATED BY:
 DANIEL E. GILBERT, P.S.
 REG. SUR. NO. 5402
 1041 N. MAIN ST.
 BELLEFONTAINE, OHIO 43311

DEMARSH SURVEY
 Lot No. 2
 MIAMI ISLAND ALLOTMENT
 STOKES TOWNSHIP
 LOGAN COUNTY, OHIO
 JUNE 20, 1981

SCALE: 1" = 20'

LEGEND

- 5/8" IRON ROD SET
- 5/8" IRON ROD FOUND
- ⊙ MAG NAIL SET



CURVE	C 1
DELTA ANGLE	29° 33' 29"
RADIUS	40.00'
ARC	20.64'
TANGENT	10.55'
CHORD	20.41'
CHORD BEARING	N 14° 32' 20" E

CURVE	C 2
DELTA ANGLE	21° 45' 35"
RADIUS	40.00'
ARC	15.19'
TANGENT	7.69'
CHORD	15.10'
CHORD BEARING	N 11° 07' 13" W

**RETRACEMENT SURVEY OF THE
DAVID W. MURKA
ORIGINAL LOT 1
OF THE MIAMI ISLAND ALLOTMENT
PLAT CABINET A, SLIDE 525
OFFICIAL RECORD 444, PAGE 353
VIRGINIA MILITARY SURVEY 12276
STOKES TOWNSHIP
LOGAN COUNTY, OHIO**

SURVEYED BY:

(Signature)
JEFFREY T. LEE
PROFESSIONAL SURVEYOR 6359
JANUARY 8, 2002



ORIGINAL STAMP IN GREEN

2 WORKING DAYS
BEFORE YOU DIG
CALL TOLL FREE **800-362-2764**
OHIO UTILITIES PROTECTION SERVICE.

COPYRIGHT 2002 BY:
LEE SURVEYING & MAPPING CO., INC.
117 North Madriver Street
BELLEFONTAINE, OHIO 43311
(937) 593-7335

D407 DMURKA L-3294-3
 DMURKA.DAT

INDEXED ON MAP
7119 2P