

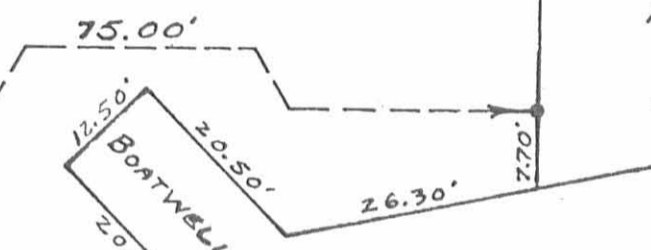
MAPLE AVE. - 30'
 N. 16°-36' E. 63.08'
 R.R. SPIKE FD 53°-51.5'
 18.57'
 R.R. NAIL 94.50'
 31.42'
 15.00'
 18.31'

Lot No. 31

Lot No. 30

WALNUT ST. - 30'
 N. 55°-39' W. 198.73'

187.78'



CHANNEL

61.00'

126.70'
 S. 55°-39' E. 134.40'

● - 5/8" x 30" REBAR SET "CAPPED"
 REFERENCE :
 MIDLAKE SUBD. NO. 2
 PLAT CAB. A SLIDE 327

SURVEY OF LOT NO. 31
 MIDLAKE SUBD. NO. 2
 TECUMSEH ISLAND
 STOKES TOWNSHIP
 LOGAN COUNTY, OHIO
 NOVEMBER 3, 1984

SCALE: 1" = 20'

INDEXED ON MAP
 7235 1P



SURVEYED AND PLATED BY:
 DANIEL E. GILBERT, P.S.
 REG. SUR. NO. 5402
 105 ORGAN ST.
 BELLEFONTAINE, OHIO 43311

REVISED: 10-14-85 DEG.

084.-019