

LEGEND:

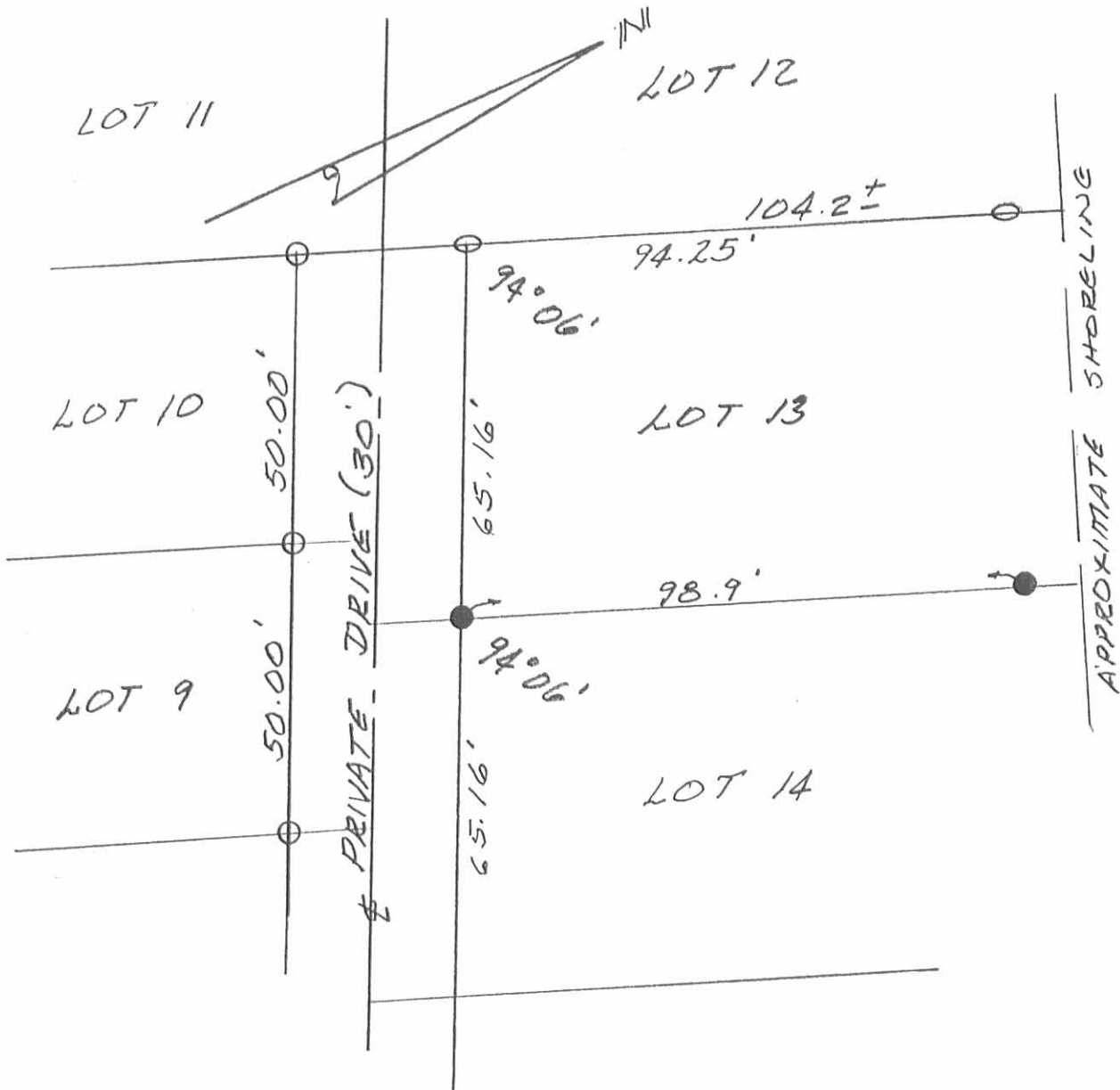
- A = OLD HUB FOUND REPLACED W/ 5/8" IRON BAR
- B = 5/8" IRON BAR FOUND
- C = 5/8" IRON BAR SET



Leslie H. Geeslin
LESLIE H. GEESLIN
EUSHSVLVANIA, OHIO

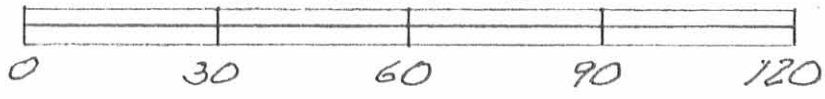
SURVEY OF LOTS 9 AND 10 OF MIDLAKE SUBDIVISION NO. 1, TECUMSEH ISLAND, STOKES TOWNSHIP, LOGAN COUNTY, OHIO		
DATE 10/84	DRAWN BY LHS	APPROVED BY
SCALE 1"=30'	REVISED	
		DRAWING NUMBER
		LYTLE

REC'D 4-30-98 SWS



SURVEY OF LOT 13, MIDLAKE SUB-DIVISION
 NO. 1, TECUMSEH ISLAND, STOKES
 TOWNSHIP, LOGAN COUNTY, OHIO
 FOR JERRY SCHEPPEL.

JUNE 30, 1998
 SCALE: 1"=30'



- LEGEND:
- = 5/8" IRON BAR SET
 - = 5/8" IRON BAR FOUND
 - = IRON FOUND - BELIEVE TO BE OVER ORIGINAL STAKES.

INDEXED ON MAP
 7237 2P

Leslie H. Geeslin
 LESLIE H. GEESLIN
 RUSHsylvania, OHIO
 PH 937-468-2792

REV'D 5-19-11 SMY OK

Lee Surveying and Mapping Co., Inc.

Land Surveys • Topography • Subdivisions • Construction Layout

117 N. Madriver St.
Bellefontaine OH 43311



Phone: (937) 593-7335
Fax: (937) 593-7444
surveys@lsminc.us

HEBERLING 0.212 ACRE

Lying in Tecumseh Island, Stokes Township, Logan County, Ohio.

Being all of the Helen J. Heberling Lot 10 and part of Lot 9 of the Midlake Subdivision Number 1 (Plat Cabinet A, Slide 318) as deeded and described in Official Record 938, Page 868 of the Logan County Records of Deeds and being more particularly described as follows:

Beginning at a MAG nail set at the northeast corner of Lot 11 on the center-line of a 30 feet wide private drive.

THENCE, with the center-line of said private drive, S 64°-22'-52"E, a distance of 60.00 feet to a MAG nail set.

THENCE, S 21°-31'-55"W, a distance of 157.17 feet to a point on the center-line of a channel, passing 5/8 inch iron rods set at 15.04 feet and 123.04 feet.

THENCE, with the center-line of said channel and the north line of the Tecumseh Cove Condominium, Phase One (Plat Cabinet B, Slide 86B), N 59°-41'-37"W, a distance of 60.52 feet to a point.

THENCE, with the east line of Lot 11, N 21°-31'-08"E, a distance of 152.21 feet to the point of beginning, passing a 5/8 inch iron rod set at 32.17 feet and a 5/8 inch iron rod found at 137.17 feet.

Containing 0.212 acre.

Property is subject to any and all previous easements and rights-of-way of record.

The basis for bearings is the center-line of a 30 feet wide private drive, being S 64°-22'-52"E, and all other bearings are from angles and distances measured in a field survey by Lee Surveying and Mapping Co., Inc. on May 13, 2011.

Description prepared by:



ORIGINAL STAMP IN GREEN

William K. Bruce
Professional Surveyor 7437
May 13, 2011

L-51230411

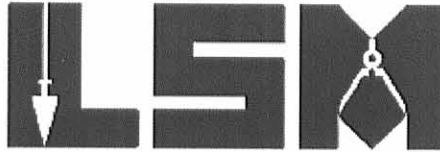


REC'D 5-19-11 Survey

Lee Surveying and Mapping Co., Inc.

Land Surveys • Topography • Subdivisions • Construction Layout

117 N. Madriver St.
Bellefontaine OH 43311



Phone: (937) 593-7335
Fax: (937) 593-7444
surveys@lsminc.us

HEBERLING 0.383 ACRE

Lying in Tecumseh Island, Stokes Township, Logan County, Ohio.

Being part of the Helen J. Heberling Lot 9 and all of Lot 8 of the Midlake Subdivision Number 1 (Plat Cabinet A, Slide 318) as deeded and described in Official Record 938, Page 868 of the Logan County Records of Deeds and being more particularly described as follows:

Beginning at a MAG nail set at the northeast corner of Lot 11 on the center-line of a 30 feet wide private drive.

THENCE, with the center-line of said private drive, S 64°-22'-52"E, a distance of 60.00 feet to a MAG nail set at the TRUE POINT OF BEGINNING.

THENCE, with the center-line of said private drive, S 64°-22'-52"E, a distance of 111.28 feet to a MAG nail set.

THENCE, with the west line of Lot 7, S 26°-50'-08"W, a distance of 164.72 feet to a point on the center-line of a channel, passing 5/8 inch iron rods set at 15.00 feet and 135.00 feet.

THENCE, with the center-line of said channel and the north line of the Tecumseh Cove Condominium, Phase One (Plat Cabinet B, Slide 86B), N 59°-41'-37"W, a distance of 96.91 feet to a point.

THENCE, N 21°-31'-55"E, a distance of 157.17 feet to the point of beginning, passing 5/8 inch iron rods set at 34.13 feet and 142.13 feet.

Containing 0.383 acre.

Property is subject to any and all previous easements and rights-of-way of record.

The basis for bearings is the center-line of a 30 feet wide private drive, being S 64°-22'-52"E, and all other bearings are from angles and distances measured in a field survey by Lee Surveying and Mapping Co., Inc. on May 5, 2011.



Description prepared by:

William K. Bruce
Professional Surveyor 7437
May 5, 2011

L-51230411



