

Lee Surveying and Mapping Co., Inc.

Land Surveys • Topography • Subdivisions • Construction Layout

117 N. Madriver St.
Bellefontaine OH 43311



Phone: (937) 593-7335
Fax: (937) 593-7444

surveys@lsminc.us

BURKEY 0.161 ACRE

Lying in Virginia Military Survey 9968, Stokes Township, Logan County, Ohio.

Being out of part of the Patrick E. Burkey and Carole L. Burkey 0.190 acre tract as deeded and described in Official Record 776, page 57, all of the Patrick Burkey and Carole Burkey 0.066 acre tract as deeded and described in Official Record 887, Page 781, all of the 0.020 acre tract and part of the 0.027 acre tract as deeded and described in Official Record 951, Page 338, Tracts 1 and 2 of the Logan County Records of Deeds and being more particularly described as follows:

Commencing at a railroad spike found on the center-line of Ohio Route 368 at the P.T. of a curve at Station 78+20.3 as recorded on the State Highway Plan L-28 filed in the Logan County Engineer's Office.

THENCE, with the center-line of Ohio Route 368 (45 feet wide), with a curve to the right, having a central angle of 20°-32'-29", a radius of 114.56 feet, an arc length of 41.07 feet, a chord bearing S 36°-36'-01"E, a distance of 40.85 feet to a railroad spike found at the TRUE POINT OF BEGINNING.

THENCE, with the southerly line of the Michael White 0.134 acre tract (O.R. 887, Pg. 783), N 75°-13'-15"E, a distance of 126.83 feet to a point on the face of a concrete seawall, passing a 5/8 inch iron rod set at 22.89 feet, a 5/8 inch iron rod found at 110.36 feet and a MAG nail set in drill hole set at 125.91 feet.

THENCE, with the face of the concrete seawall, the following five courses:

S 18°-49'-41"E, a distance of 8.06 feet to a point.

S 18°-56'-18"E, a distance of 45.60 feet to a point.

S 42°-06'-11"E, a distance of 0.29 feet to a point.

S 08°-17'-03"W, a distance of 3.53 feet to a point.

S 16°-34'-46"W, a distance of 22.13 feet to a MAG nail set in a drill hole set.

THENCE, N 84°-07'-44"W, a distance of 123.97 feet to a railroad spike set on the center-line of Ohio Route 368, passing a 5/8 inch iron rod set at 17.70 feet and a railroad spike set at 100.72 feet.

THENCE, with the center-line of Ohio Route 368, with a curve to the left, having a central angle of 16°-11'-10", a radius of 114.56 feet, an arc length of 32.36 feet, a chord bearing N 18°-14'-14"W, a distance of 32.26 feet to the point of beginning.

Containing 0.161 acre, of which 0.019 acre is within the highway right-of-way.

The basis for bearings is the southerly line of the Michael White 0.134 acre tract (O.R. 887, Pg. 783), being N 75°-13'-15"E, and all other bearings are from angles and distances measured in a field survey by Lee Surveying and Mapping Co., Inc. on December 8, 2008.



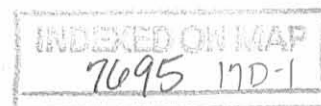
ORIGINAL STAMP IN GREEN

Description prepared by:

William K. Bruce

William K. Bruce
Professional Surveyor 7437
May 12, 2009

4469118

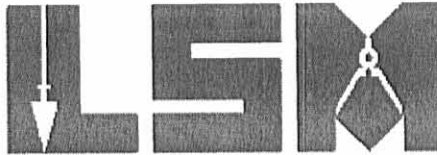


REC'D 5-14-09 SMY OK

Lee Surveying and Mapping Co., Inc.

Land Surveys • Topography • Subdivisions • Construction Layout

117 N. Madriver St.
Bellefontaine OH 43311



Phone: (937) 593-7335
Fax: (937) 593-7444

surveys@lsminc.us

BURKEY 0.145 ACRE

Lying in Virginia Military Survey 9968, Stokes Township, Logan County, Ohio.

Being out of part of the Patrick E. Burkey and Carole L. Burkey 0.190 acre tract as deeded and described in Official Record 776, page 57, and part of the Patrick Burkey and Carole Burkey 0.027 acre tract as deeded and described in Official Record 951, Page 338, Tract 2 of the Logan County Records of Deeds and being more particularly described as follows:

Commencing at a railroad spike found on the center-line of Ohio Route 368 at the P.T. of a curve at Station 78+20.3 as recorded on the State Highway Plan L-28 filed in the Logan County Engineer's Office.

THENCE, with the center-line of Ohio Route 368 (45 feet wide), the following two courses:

With a curve to the right, having a central angle of 20°-32'-29", a radius of 114.56 feet, an arc length of 41.07 feet, a chord bearing S 36°-36'-01"E, a distance of 40.85 feet to a railroad spike found.

With a curve to the right, having a central angle of 16°-11'-10", a radius of 114.56 feet, an arc length of 32.36 feet, a chord bearing S 18°-14'-14"E, a distance of 32.26 feet to a railroad spike set at the TRUE POINT OF BEGINNING.

THENCE, S 84°-07'-44"E, a distance of 123.97 feet to a MAG nail set in a drill hole set on the face of a concrete seawall, passing a railroad spike set at 23.25 feet and a 5/8 inch iron rod set at 106.27 feet.

THENCE, with the face of the concrete seawall, the following four courses:

- S 16°-34'-46"W, a distance of 2.32 feet to a point.
- S 26°-29'-00"W, a distance of 4.70 feet to a point.
- S 17°-45'-22"W, a distance of 69.06 feet to a point.
- S 07°-22'-10"W, a distance of 3.52 feet to a point.

THENCE, with the northerly line of the Brian D. Tucker 0.254 acre tract (O.R. 622, Pg. 894), N 60°-10'-10"W, a distance of 112.85 feet to a 5/8 inch iron rod found on the center-line of Ohio Route 368, passing a 1 inch iron pipe found at 10.00 feet and a 5/8 inch iron rod set at 88.64 feet.

THENCE, with the center-line of Ohio Route 368, with a curve to the left, having a central angle of 16°-11'-10", a radius of 114.56 feet, an arc length of 32.36 feet, a chord bearing N 02°-03'-01"W, a distance of 32.26 feet to the point of beginning.

Containing 0.145 acre, of which 0.019 acre is within the highway right-of-way.

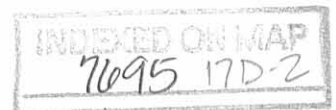
The basis for bearings is the southerly line of the Michael White 0.134 acre tract (O.R. 887, Pg. 783), being N 75°-13'-15"E, and all other bearings are from angles and distances measured in a field survey by Lee Surveying and Mapping Co., Inc. on December 8, 2008.

Description prepared by:

William K. Bruce
Professional Surveyor 7437
May 12, 2009



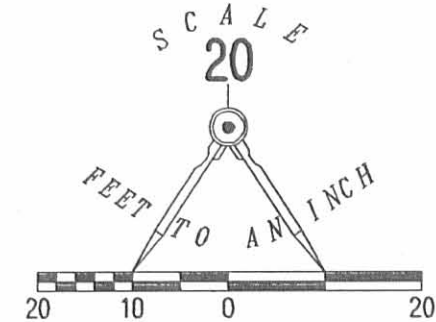
ORIGINAL STAMP IN GREEN



4469118

REC'D 5-14-09 SMM OK

CURVE	DELTA ANGLE	RADIUS	ARC LENGTH	TANGENT	CHORD LENGTH	CHORD BEARING
C1	20°32'29"	114.56'	41.07'	20.76'	40.85'	S 36°36'01" E
C2	16°11'10"	114.56'	32.36'	16.29'	32.26'	N 18°14'14" W
C3	16°11'10"	114.56'	32.36'	16.29'	32.26'	N 02°03'01" W



**SURVEY OF TWO TRACTS OUT OF THE
PATRICK E. BURKEY AND
CAROLE L. BURKEY
0.190 ACRE TRACT
OFFICIAL RECORD 776, PAGE 57
AND
PATRICK BURKEY AND
CAROLE BURKEY
0.066 ACRE TRACT
OFFICIAL RECORD 887, PAGE 781
0.020 ACRE TRACT
OFFICIAL RECORD 951, PAGE 338, TRACT 1
0.027 ACRE TRACT
OFFICIAL RECORD 951, PAGE 338, TRACT 2
VIRGINIA MILITARY SURVEY 9968
STOKES TOWNSHIP
LOGAN COUNTY, OHIO**

SURVEYED BY:

William K. Bruce
WILLIAM K. BRUCE
PROFESSIONAL SURVEYOR 7437
DECEMBER 8, 2008



ORIGINAL STAMP IN GREEN

COPYRIGHT 2008 BY:
LEE SURVEYING & MAPPING CO., INC.
117 North Madriver Street
BELLEFONTAINE, OHIO 43311
(937) 593-7335
surveys@lsmcinc.us
KSS D1208 4469118 L-4469-3

MICHAEL WHITE
0.134 ACRE
O.R. 887, PG. 783

(BASIS FOR BEARINGS)
N 75°13'15" E
126.83'

PATRICK BURKEY AND
CAROLE BURKEY
0.066 ACRE
O.R. 887, PG. 781

(0.066 ACRE)
(0.061 ACRE)
0.161 ACRE
OF WHICH 0.019 ACRE IS WITHIN
THE HIGHWAY RIGHT-OF-WAY

S 84°07'44" E
123.97'

PATRICK E. BURKEY AND
CAROLE L. BURKEY
0.190 ACRE
O.R. 776, PG. 57

0.145 ACRE
OF WHICH 0.019 ACRE IS WITHIN
THE HIGHWAY RIGHT-OF-WAY

BRIAN D. TUCKER
0.254 ACRE
O.R. 622, PG. 894

PLAN L-28
STA. 78+20.3



- LEGEND
- 5/8 INCH IRON ROD SET
 - 5/8 INCH IRON IRON ROD FOUND
 - ⊙ 1 INCH IRON PIPE FOUND
 - ⊗ RAILROAD SPIKE FOUND
 - ⊕ RAILROAD SPIKE SET
 - ⊙ MAG NAIL SET IN DRILL HOLE SET

2 WORKING DAYS
BEFORE YOU DIG
CALL TOLL FREE **800-362-2764**
OHIO UTILITIES PROTECTION SERVICE.

INDEXED ON MAP
7695 17P

Revised 5/23/14



Lee Surveying and Mapping Co., Inc.

Land Surveys • Topography • Subdivisions • Construction Layout

117 N. Madriver St.
Bellefontaine OH 43311



Phone: (937) 593-7335
Fax: (937) 593-7444
surveys@lsminc.us

BURKEY 0.099 ACRE

Lying in Virginia Military Survey 9968, Stokes Township, Logan County, Ohio.

Being part of the Patrick E. Burkey and Carole L. Burkey 0.190 acre tract as deeded and described in Official Record 776, page 57, and part of the Patrick Burkey and Carole Burkey 0.027 acre tract as deeded and described in Official Record 951, Page 338, Tract 2 of the Logan County Records of Deeds and being more particularly described as follows:

Commencing at a railroad spike found on the center-line of Ohio Route 368 at the P.T. of a curve at Station 78 + 20.3 as recorded on the State Highway Plan L-28 filed in the Logan County Engineer's Office.

THENCE, with the center-line of Ohio Route 368 (45 feet wide), the following two courses:

With a curve to the right, having a central angle of 20°-32'-29", a radius of 114.56 feet, an arc length of 41.07 feet, a chord bearing S 36°-36'-01"E, a distance of 40.85 feet to a railroad spike found.

With a curve to the right, having a central angle of 23°-22'-39", a radius of 114.56 feet, an arc length of 46.74 feet, a chord bearing S 14°-38'-28"E, a distance of 46.42 feet to a MAG nail set at the TRUE POINT OF BEGINNING.

THENCE, S 78°-42'-55"E, a distance of 51.43 feet to a 5/8 inch iron rod set, passing a MAG nail set at 23.09 feet.

THENCE, S 85°-45'-29"E, a distance of 57.25 feet to a MAG nail set.

THENCE, N 17°-22'-53"E, a distance of 11.84 feet to a MAG nail set.

THENCE, S 70°-08'-31"E, a distance of 8.05 feet to a point on the face of a concrete seawall.

THENCE, with the face of the concrete seawall, the following two courses:

S 17°-45'-22"W, a distance of 68.12 feet to a point.

INDEXED ON FILE
7695 18D-1

Lee Surveying and Mapping Co., Inc.

Land Surveys • Topography • Subdivisions • Construction Layout

117 N. Madriver St.
Bellefontaine OH 43311



Phone: (937) 593-7335
Fax: (937) 593-7444
surveys@lsminc.us

S 07°-22'-10"W, a distance of 3.52 feet to a point.

THENCE, with the northerly line of the Brian D. Tucker 0.254 acre tract (O.R. 622, Pg. 894), N 60°-10'-10"W, a distance of 112.85 feet to a 5/8 inch iron rod found on the center-line of Ohio Route 368, passing a 1 inch iron pipe found at 10.00 feet and a 5/8 inch iron rod set at 88.64 feet.

THENCE, with the center-line of Ohio Route 368, with a curve to the left, having a central angle of 08°-59'-41", a radius of 114.56 feet, an arc length of 17.98 feet, a chord bearing N 01°-32'-43"E, a distance of 17.97 feet to the point of beginning.

Containing 0.099 acre, of which 0.011 acre is within the highway right-of-way.

The basis for bearings is the southerly line of the Michael White 0.134 acre tract (O.R. 1053, Pg. 742), being N 75°-13'-15"E, and all other bearings are from angles and distances measured in a field survey by Lee Surveying and Mapping Co., Inc. on December 8, 2008, revised May 17, 2014.



ORIGINAL STAMP IN GREEN

Description prepared by:

A handwritten signature in black ink that reads 'William K. Bruce'.

William K. Bruce
Professional Surveyor 7437
May 19, 2014

44690414A

Lee Surveying and Mapping Co., Inc.



Land Surveys • Topography • Subdivisions • Construction Layout

117 N. Madriver St.
Bellefontaine OH 43311



Phone: (937) 593-7335
Fax: (937) 593-7444
surveys@lsminc.us

BURKEY 0.206 ACRE

Lying in Virginia Military Survey 9968, Stokes Township, Logan County, Ohio.

Being part of the Patrick E. Burkey and Carole L. Burkey 0.190 acre tract as deeded and described in Official Record 776, page 57, all of the Patrick Burkey and Carole Burkey 0.066 acre tract as deeded and described in Official Record 887, Page 781, all of the 0.020 acre tract and part of the 0.027 acre tract as deeded and described in Official Record 951, Page 338, Tracts 1 and 2 of the Logan County Records of Deeds and being more particularly described as follows:

Commencing at a railroad spike found on the center-line of Ohio Route 368 at the P.T. of a curve at Station 78+20.3 as recorded on the State Highway Plan L-28 filed in the Logan County Engineer's Office.

THENCE, with the center-line of Ohio Route 368 (45 feet wide), with a curve to the right, having a central angle of 20°-32'-29", a radius of 114.56 feet, an arc length of 41.07 feet, a chord bearing S 36°-36'-01"E, a distance of 40.85 feet to a railroad spike found at the TRUE POINT OF BEGINNING.

THENCE, with the southerly line of the Michael White 0.134 acre tract and 0.016 acre tract (O.R. 1053, Pg. 742, Parcel One and Parcel Two), N 75°-13'-15"E, a distance of 126.83 feet to a point on the face of a concrete seawall, passing a 5/8 inch iron rod set at 22.89 feet, a 5/8 inch iron rod found at 110.36 feet and a MAG nail set in drill hole set at 125.91 feet.

THENCE, with the face of the concrete seawall, the following seven courses:

S 18°-49'-41"E, a distance of 8.06 feet to a point.

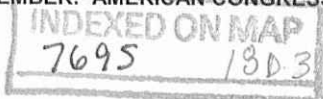
S 18°-56'-18"E, a distance of 45.60 feet to a point.

S 42°-06'-11"E, a distance of 0.29 feet to a point.

S 08°-17'-03"W, a distance of 3.53 feet to a point.

S 16°-34'-46"W, a distance of 24.45 feet to a point.

S 26°-29'-00"W, a distance of 4.70 feet to a point.





APPROVED

Lee Surveying and Mapping Co., Inc.

Land Surveys • Topography • Subdivisions • Construction Layout

117 N. Madriver St.
Bellefontaine OH 43311



Phone: (937) 593-7335
Fax: (937) 593-7444
surveys@lsminc.us

S 17°-45'-22"W, a distance of 0.93 feet to a point.

THENCE, N 70°-08'-31"W, a distance of 8.05 feet to a MAG nail set.

THENCE, S 17°-22'-53"W, a distance of 11.84 feet to a MAG nail set.

THENCE, N 85°-45'-29"W, a distance of 57.25 feet to a 5/8 inch iron rod set.

THENCE, N 78°-42'-55"W, a distance of 51.43 feet to a railroad spike set on the center-line of Ohio Route 368, passing a MAG nail set at 28.34 feet.

THENCE, with the center-line of Ohio Route 368, with a curve to the left, having a central angle of 23°-22'-39", a radius of 114.56 feet, an arc length of 46.74 feet, a chord bearing N 14°-38'-28"W, a distance of 46.42 feet to the point of beginning.

Containing 0.206 acre, of which 0.027 acre is within the highway right-of-way.

The basis for bearings is the southerly line of the Michael White 0.134 acre tract (O.R. 1053, Pg. 742), being N 75°-13'-15"E, and all other bearings are from angles and distances measured in a field survey by Lee Surveying and Mapping Co., Inc. on December 8, 2008, revised May 17, 2014.

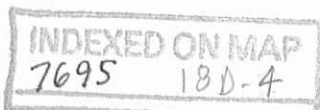


Description prepared by:

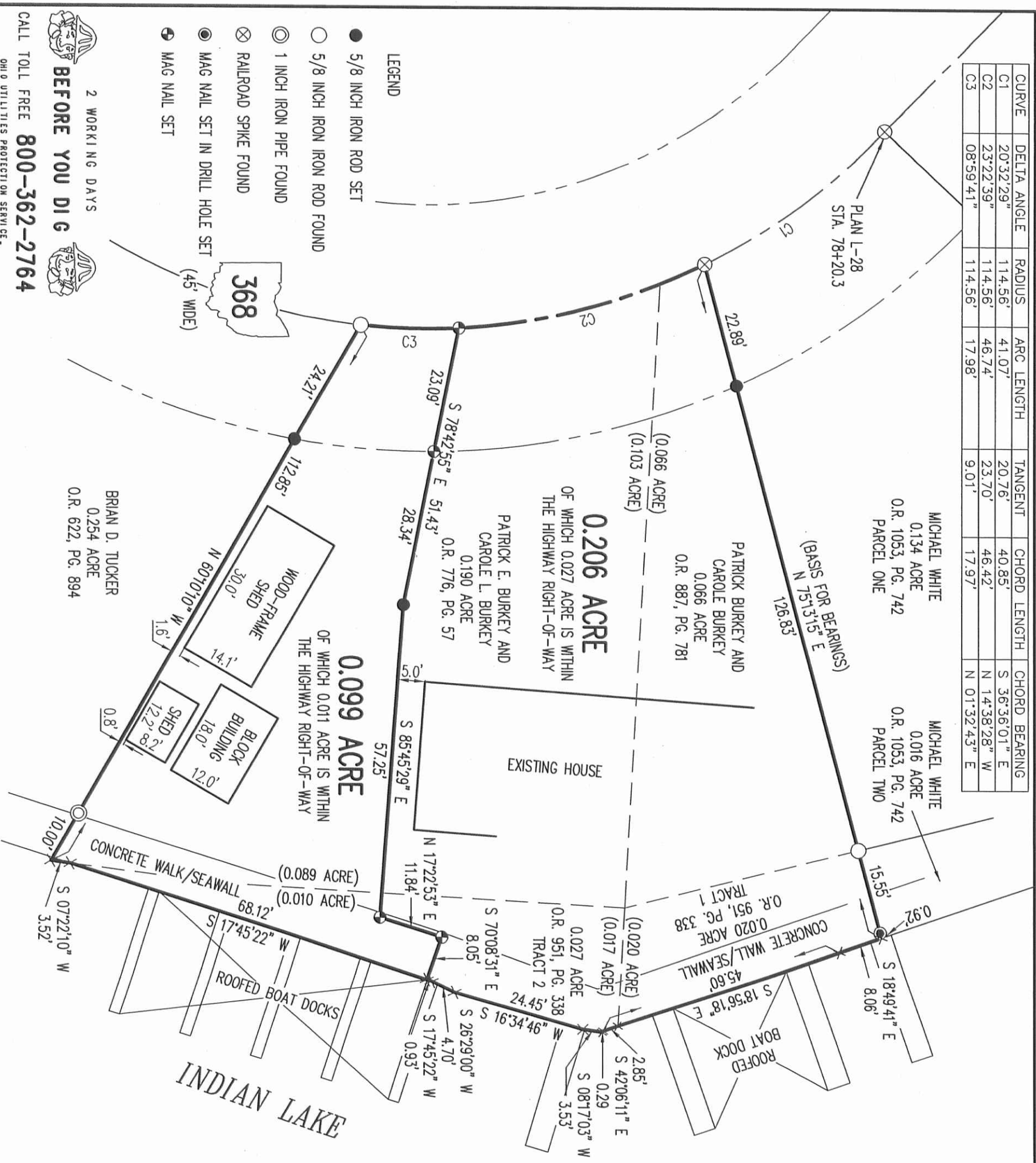
William K. Bruce

William K. Bruce
Professional Surveyor 7437
May 19, 2014

44690414A

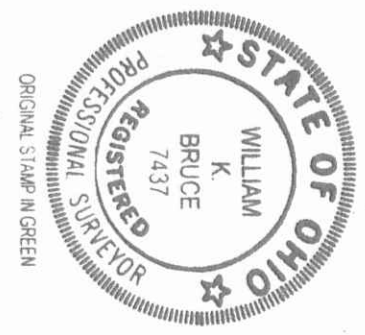


CURVE	DELTA ANGLE	RADIUS	ARC LENGTH	TANGENT	CHORD LENGTH	CHORD BEARING
C1	20°32'29"	114.56'	41.07'	20.76'	40.85'	S 36°36'01" E
C2	23°22'39"	114.56'	46.74'	23.70'	46.42'	N 14°38'28" W
C3	08°59'41"	114.56'	17.98'	9.01'	17.97'	N 01°32'43" E



2 WORKING DAYS
BEFORE YOU DIG
 CALL TOLL FREE **800-362-2764**
 OHIO UTILITIES PROTECTION SERVICE

INDEXED ON MAP
 18P



SURVEY OF TWO TRACTS OUT OF THE
PATRICK E. BURKEY AND
CAROLE L. BURKEY
0.190 ACRE TRACT
OFFICIAL RECORD 776, PAGE 57
A N D
PATRICK BURKEY AND
CAROLE BURKEY
0.066 ACRE TRACT
OFFICIAL RECORD 887, PAGE 781
0.020 ACRE TRACT
OFFICIAL RECORD 951, PAGE 338, TRACT 1
0.027 ACRE TRACT
OFFICIAL RECORD 951, PAGE 338, TRACT 2
VIRGINIA MILITARY SURVEY 9968
STOKES TOWNSHIP
LOGAN COUNTY, OHIO

SURVEYED BY:

 WILLIAM K. BRUCE
 PROFESSIONAL SURVEYOR 7437
 DECEMBER 8, 2008
 SURVEY REVISED MAY 17, 2014

COPYRIGHT 2014 BY:
LEE SURVEYING & MAPPING CO., INC.
 117 North Medivier Street
 BELLEFONTAINE, OHIO 43311
 (937) 593-7335
 WWW.LSM.INC.US
 surveys@lsm.inc.us

KSS D0414 44690414A L-4469-3

Parcel "A + B"
LEGAL DESCRIPTION

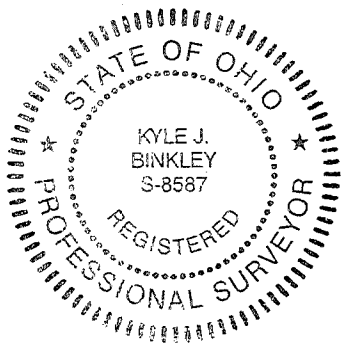
Being all of the 0.206 acre tract in the name of Patrick E. & Carole L. Burkey (O.R. 1149, Pg. 805, Tract 1) & part of the 0.099 acre tract in the name of Patrick E. & Carole L. Burkey (O.R. 1149, Pg. 805, Tract 2) and being located in Virginia Military Survey 9968, Stokes Township, Logan County, Ohio, more particularly described as follows:

Commencing at a Mag Nail set in the centerline of State Route 368 (PT Station 78+20.3) as recorded on the State Highway Plan L-28 of the Logan County Engineer's Office; thence with a curve to the right and being the W line of a 0.134 acre tract in the name of Michael White (O.R. 1053, Pg. 742, Parcel 1), having a radius of 114.95', a Delta angle of 20°-28'-15", an arc length of 41.07', a chord bearing of S 35°-32'-40" E and a chord distance of 40.85' to an existing Railroad Spike at the POINT OF BEGINNING and being the SW corner of said 0.134 acre tract and the NW corner of said 0.206 acre tract; thence the following courses:

1. N 76°-11'-25" E with the S line of said 0.134 acre tract, the S line of a 0.016 acre tract in the name of Michael White (O.R. 1053, Pg. 742, Parcel 2), and the N line of said 0.206 acre tract, 126.83' to a point on the face of a concrete seawall at SE corner of said 0.016 acre tract and the NE corner of said 0.206 acre tract, passing an existing Railroad Spike at 22.88' and a set #5 Rebar at 111.28';
2. S 17°-50'-32" E with the face of a concrete seawall, 8.06' to a point;
3. S 17°-57'-09" E with the face of a concrete seawall, 45.60' to a point;
4. S 41°-06'-33" E with the face of a concrete seawall, 0.29' to a point;
5. S 09°-16'-41" W with the face of a concrete seawall, 3.53' to a point;
6. S 17°-34'-24" W with the face of a concrete seawall, 24.45' to a point;
7. S 27°-28'-38" W with the face of a concrete seawall, 4.70' to a point;
8. S 18°-45'-00" W with the face of a concrete seawall, 13.96' to a point, passing the SE corner of said 0.206 acre tract and the NE corner of a 0.099 acre tract in the name of Patrick E. & Carole L. Burkey (O.R. 1149, Pg. 805, Tract 2) at 0.93';
9. N 81°-51'-51" W, 64.62' to an existing #5 Rebar on the S line of said 0.206 acre tract and the N line of said 0.099 acre tract;
10. N 77°-42'-27" W with the S line of said 0.206 acre tract and the N line of said 0.099 acre tract, 51.43' to a Mag Nail set in the centerline of State Route 368, passing an existing Railroad Spike at 28.59';
11. With the W line of said 0.206 acre tract and being a curve to the left, having a radius of 114.95', a Delta angle of 23°-17'-50", an arc length of 46.74', a chord bearing of N 13°-46'-34" W and a chord distance of 46.42' to the POINT OF BEGINNING.

The above described parcel contains 0.211 acres, more or less, of which 0.027 acres are occupied by road right-of-way, subject to all legal highways and easements of record, 0.004 acre is a part of said 0.099 acre tract.

The system of bearings for this legal description is based on Ohio State Plane – North Coordinate System NAD83 (2011). This legal description and accompanying plat represent an actual boundary survey completed under the direct supervision of Kyle J. Binkley, P.S. #8587 on October 07, 2020. All markers called for above are in place.



A handwritten signature in black ink, appearing to read "K. Binkley", written over the seal area.

INDEXED ON MAP
7695

11-16-2020



Patrick Burkey
Page 2 of 5
October 07, 2020

Parcel "B"
LEGAL DESCRIPTION

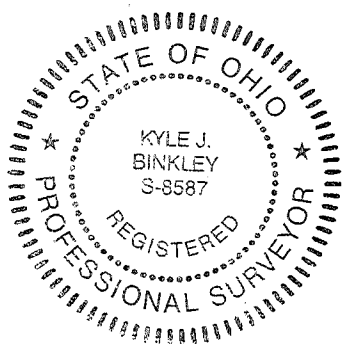
Being a part of the 0.099 acre tract in the name of Patrick E. & Carole L. Burkey (O.R. 1149, Pg. 805, Tract 2) and being located in Virginia Military Survey 9968, Stokes Township, Logan County, Ohio, more particularly described as follows:

Commencing at a Mag Nail set in the centerline of State Route 368 (PT Station 78+20.3) as recorded on the State Highway Plan L-28 of the Logan County Engineer's Office; thence with a curve to the right and being the W line of a 0.134 acre tract in the name of Michael White (O.R. 1053, Pg. 742, Parcel 1), having a radius of 114.95', a Delta angle of 20°-28'-15", an arc length of 41.07', a chord bearing of S 35°-32'-40" E and a chord distance of 40.85' to an existing Railroad Spike; thence Continuing with said curve and being the W line of a 0.206 acre tract in the name of Patrick E. & Carole L. Burkey (O.R. 1149, Pg. 805, Tract1) and having a radius of 114.95', a Delta angle of 23°-17'-50", an arc length of 46.74', a chord bearing of S 13°-46'-34" E and a chord distance of 46.42' to a Mag Nail set at the SW corner of said 0.206 acre tract and the NW corner of a 0.099 acre tract in the name of Patrick E. & Carole L. Burkey (O.R. 1149, Pg. 805, Tract 2); thence S 77°-42'-27" E with the S line of said 0.206 acre tract and the N line of said 0.099 acre tract, 51.43' to an existing #5 Rebar at the POINT OF BEGINNING; thence the following courses:

1. S 84°-46'-36" E with the S line of said 0.206 acre tract and the N line of said 0.099 acre tract, 57.25' to an existing #5 Rebar;
2. N 17°-48'-15" E with the E line of said 0.206 acre tract and the W line of said 0.099 acre tract, 11.84' to a set Mag Spike;
3. S 69°-08'-53" E with the S line of said 0.206 acre tract and the N line of said 0.099 acre tract, 8.05' to a point on the face of a concrete seawall;
4. S 18°-45'-00" W with the face of a concrete seawall, 13.03' to a point;
5. N 81°-51'-51" W, 64.62' to the POINT OF BEGINNING, passing a set Mag Nail at 4.98'.

The above described parcel contains 0.004 acres, more or less, subject to all legal highways and easements of record.

The system of bearings for this legal description is based on Ohio State Plane – North Coordinate System NAD83 (2011). This legal description and accompanying plat represent an actual boundary survey completed under the direct supervision of Kyle J. Binkley, P.S. #8587 on October 07, 2020. All markers called for above are in place.



11-16-2020



Patrick Burkey
Page 5 of 5
October 07, 2020

**Parcel "C"
LEGAL DESCRIPTION**

Being a part of the 0.099 acre tract in the name of Patrick E. & Carole L. Burkey (O.R. 1149, Pg. 805, Tract 2) and being located in Virginia Military Survey 9968, Stokes Township, Logan County, Ohio, more particularly described as follows:

Commencing at a Mag Nail set in the centerline of State Route 368 (PT Station 78+20.3) as recorded on the State Highway Plan L-28 of the Logan County Engineer's Office; thence with a curve to the right and being the W line of a 0.134 acre tract in the name of Michael White (O.R. 1053, Pg. 742, Parcel 1), having a radius of 114.95', a Delta angle of 20°-28'-15", an arc length of 41.07', a chord bearing of S 35°-32'-40" E and a chord distance of 40.85' to an existing Railroad Spike; thence Continuing with said curve and being the W line of a 0.206 acre tract in the name of Patrick E. & Carole L. Burkey (O.R. 1149, Pg. 805, Tract1) and having a radius of 114.95', a Delta angle of 23°-17'-50", an arc length of 46.74', a chord bearing of S 13°-46'-34" E and a chord distance of 46.42' to a Mag Nail set at the POINT OF BEGINNING; thence the following courses:

1. S 77°-42'-27" E with the S line of said 0.206 acre tract and the N line of said 0.099 acre tract, 51.43' to an existing #5 Rebar, passing an existing Railroad Spike at 22.84';
2. S 81°-51'-51" E, 64.62' to a point on the face of a concrete seawall, passing a Mag Spike set at 59.64';
3. S 18°-45'-00" W with the face of a concrete seawall, 55.09' to a point;
4. S 05°-10'-35" W with the face of a concrete seawall, 3.52' to a point at the SE corner of said 0.099 acre tract and the NE corner of a 0.254 acre tract in the name of Alexis Osting (O.R. 1389, 4220);
5. N 59°-13'-20" W with the S line of said 0.099 acre tract and the N line of said 0.254 acre tract, 112.85' to a Mag Nail set in the centerline of State Route 368 and being the SW corner of said 0.099 acre tract and the NW corner of said 0.254 acre tract, passing a set #5 Rebar at 10.00' and an existing #5 Rebar at 88.88';
6. Northeasterly with the centerline of State Route 368 and being a curve to the left having a radius of 114.95', a Delta angle of 08°-59'-49", an arc length of 18.05', a chord bearing of N 02°-25'-40" E and a chord distance of 18.03' to the POINT OF BEGINNING.

The above described parcel contains 0.095 acres, more or less, subject to all legal highways and easements of record.

The system of bearings for this legal description is based on Ohio State Plane – North Coordinate System NAD83 (2011). This legal description and accompanying plat represent an actual boundary survey completed under the direct supervision of Kyle J. Binkley, P.S. #8587 on October 07, 2020. All markers called for above are in place.



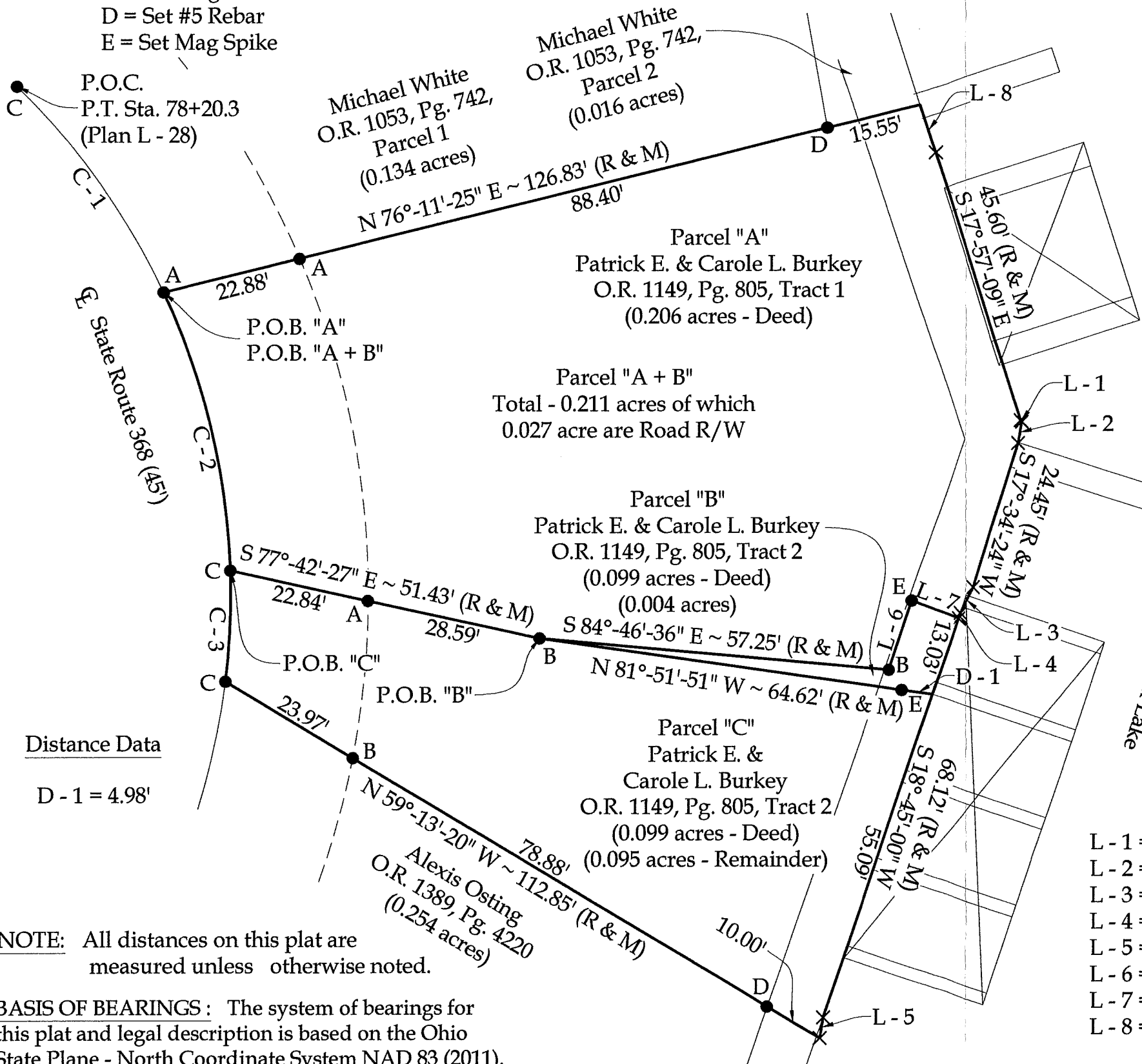
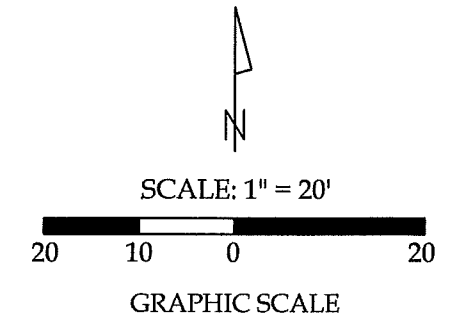
INDEXED ON MAP
7695

Survey of Parcel #43-019-17-01-001-002 and part of Parcel #43-019-17-01-001-001 and being located in V.M.S. 9968, Stokes Township, Logan County, Ohio.

(Deed Referenced in O.R. 1149, Pg. 805)

Legend

- A = Existing Railroad Spike
- B = Existing #5 Rebar
- C = Set Mag Nail
- D = Set #5 Rebar
- E = Set Mag Spike



Curve Data

- (C - 1)
 Radius = 114.95'
 Arc Length = 41.07'
 Delta = 20°-28'-15"
 Chord Distance = 40.85'
 Chord Bearing = S 35°-32'-40" E
- (C - 2)
 Radius = 114.95'
 Arc Length = 46.74'
 Delta = 23°-17'-50"
 Chord Distance = 46.42'
 Chord Bearing = S 13°-46'-34" E
- (C - 3)
 Radius = 114.95'
 Arc Length = 18.05'
 Delta = 08°-59'-49"
 Chord Distance = 18.03'
 Chord Bearing = N 02°-25'-40" E



This plat and the accompanying legal descriptions represent an actual boundary survey completed under my direct supervision on October 07, 2020.

Kyle J. Binkley
 Kyle J. Binkley, P.S. #8587

Distance Data

D - 1 = 4.98'

Line Data

- L - 1 = S 41°-06'-33" E ~ 0.29' (R & M)
- L - 2 = S 09°-16'-41" W ~ 3.53' (R & M)
- L - 3 = S 27°-28'-38" W ~ 4.70' (R & M)
- L - 4 = S 18°-45'-00" W ~ 0.93' (R & M)
- L - 5 = S 05°-10'-35" W ~ 3.52' (R & M)
- L - 6 = N 17°-48'-15" E ~ 11.84' (R & M)
- L - 7 = S 69°-08'-53" E ~ 8.05' (R & M)
- L - 8 = S 17°-50'-32" E ~ 8.06' (R & M)

NOTE: All distances on this plat are measured unless otherwise noted.

BASIS OF BEARINGS: The system of bearings for this plat and legal description is based on the Ohio State Plane - North Coordinate System NAD 83 (2011).

Binkley
 LAND SURVEYING, LLC

121 W. Auglaize Street
 Wapakoneta, Ohio 45895
 (419) 236-3768

CLIENT: Patrick Burkey			
SURVEYED BY: T.J.S./T.E.W.	DATE: 10-07-2020	DRAWN BY: K.J.B.	CHECKED BY: K.J.B.
SCALE: 1" = 20'	PAGE 1	OF 5	PAGES



Patrick Burkey
Page 2 of 3
January 18, 2021

Waterline Easement LEGAL DESCRIPTION

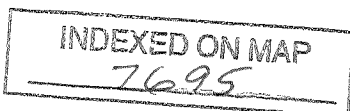
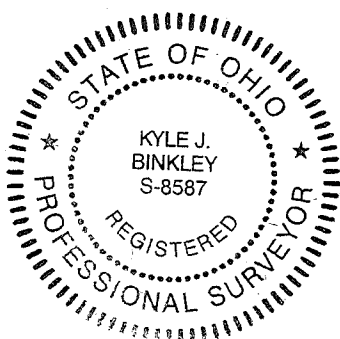
Being a part of a 0.211 acre tract in the name of Patrick E. & Carole L. Burkey (O.R. 1393, Pg. 595, Tract 1) and being located in Virginia Military Survey 9968, Stokes Township, Logan County, Ohio, more particularly described as follows:

Commencing at a Mag Nail set in the centerline of State Route 368 (PT Station 78+20.3) as recorded on the State Highway Plan L-28 of the Logan County Engineer's Office; thence with a curve to the right and being the W line of a 0.134 acre tract in the name of Michael White (O.R. 1053, Pg. 742, Parcel 1), having a radius of 114.95', a Delta angle of 20°-28'-15", an arc length of 41.07', a chord bearing of S 35°-32'-40" E and a chord distance of 40.85' to an existing Railroad Spike; thence Continuing with said curve and being the W line of said 0.211 acre tract and having a radius of 114.95', a Delta angle of 23°-17'-50", an arc length of 46.74', a chord bearing of S 13°-46'-34" E and a chord distance of 46.42' to a Mag Nail set at the SW corner of said 0.211 acre tract and the NW corner of a 0.095 acre tract in the name of Patrick E. & Carole L. Burkey (O.R. 1393, Pg. 595, Tract 2); thence S 77°-42'-27" E with the S line of said 0.211 acre tract and the N line of said 0.095 acre tract, 51.43' to an existing #5 Rebar; thence S 81°-51'-51" E, 8.37' to the POINT OF BEGINNING; thence the following courses:

1. N 23°-48'-21" W, 6.70' to a point;
2. N 66°-11'-39" E, 5.00' to a point;
3. S 23°-48'-21" E, 9.82' to a point on the new division line;
4. N 81°-51'-51" W with the new division line, 5.89' to the POINT OF BEGINNING.

The above described parcel contains 0.0009 acres, more or less, and has the sole purpose of creating a waterline easement and is not intended for the transfer of ownership of real estate.

The system of bearings for this legal description is based on Ohio State Plane – North Coordinate System NAD83 (2011). This legal description and accompanying plat represent an actual boundary survey completed under the direct supervision of Kyle J. Binkley, P.S. #8587 on January 18, 2021. All markers called for above are in place.





1-25-21
APPROVED

Patrick Burkey
Page 3 of 3
January 18, 2021

Sanitary Sewer Easement LEGAL DESCRIPTION

Being a part of the 0.095 acre tract in the name of Patrick E. & Carole L. Burkey (O.R. 1393, Pg. 595, Tract 2) and being located in Virginia Military Survey 9968, Stokes Township, Logan County, Ohio, more particularly described as follows:

Commencing at a Mag Nail set in the centerline of State Route 368 (PT Station 78+20.3) as recorded on the State Highway Plan L-28 of the Logan County Engineer's Office; thence with a curve to the right and being the W line of a 0.134 acre tract in the name of Michael White (O.R. 1053, Pg. 742, Parcel 1), having a radius of 114.95', a Delta angle of 20°-28'-15", an arc length of 41.07', a chord bearing of S 35°-32'-40" E and a chord distance of 40.85' to an existing Railroad Spike; thence Continuing with said curve and being the W line of a 0.211 acre tract in the name of Patrick E. & Carole L. Burkey (O.R. 1393, Pg. 595, Tract1) and having a radius of 114.95', a Delta angle of 23°-17'-50", an arc length of 46.74', a chord bearing of S 13°-46'-34" E and a chord distance of 46.42' to a Mag Nail set at the SW corner of said 0.211 acre tract and the NW corner of said 0.095 acre tract; thence S 77°-42'-27" E with the S line of said 0.211 acre tract and the N line of said 0.095 acre tract, 43.18' to a point, passing an existing #5 Rebar at 22.84'; thence the following courses:

1. Continuing S 77°-42'-27" E with the S line of said 0.211 acre tract and the N line of said 0.095 acre tract, 5.54' to a point;
2. S 19°-33'-04" W, 11.03' to a point;
3. N 70°-26'-56" W, 5.50' to a point;
4. N 19°-33'-04" E, 10.33' to the POINT OF BEGINNING.

The above described parcel contains 0.001 acres, more or less, and has the sole purpose of creating a sanitary sewer easement and is not intended for the transfer of ownership of real estate.

The system of bearings for this legal description is based on Ohio State Plane – North Coordinate System NAD83 (2011). This legal description and accompanying plat represent an actual boundary survey completed under the direct supervision of Kyle J. Binkley, P.S. #8587 on January 18, 2021. All markers called for above are in place.



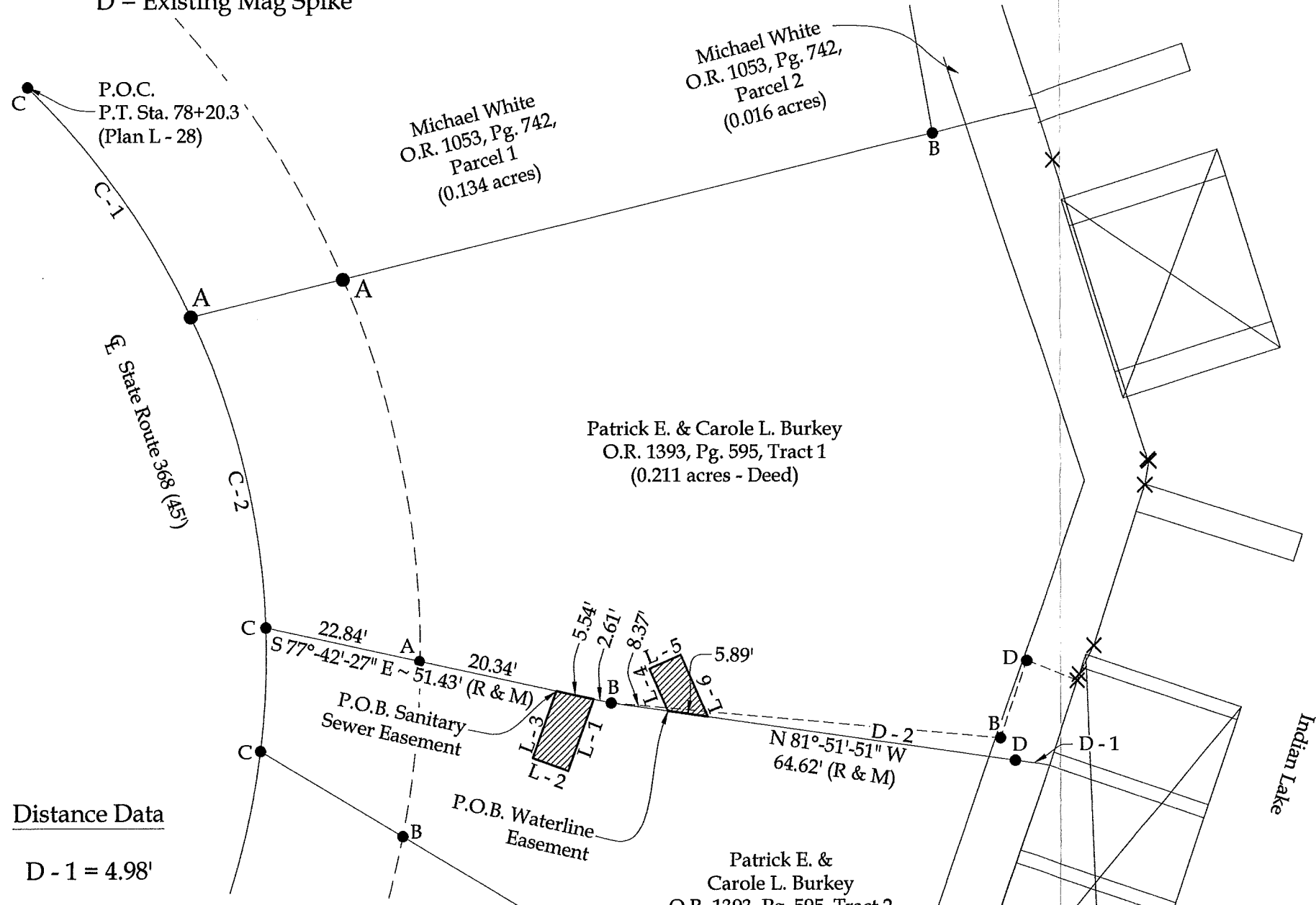
INDEXED ON MAP
7695

Survey of a part of Parcel #43-019-17-01-001-002 and part of Parcel #43-019-17-01-001-001 and being located in V.M.S. 9968, Stokes Township, Logan County, Ohio.

(Deed Referenced in O.R. 1149, Pg. 805)

Legend

- A = Existing Railroad Spike
- B = Existing #5 Rebar
- C = Existing Mag Nail
- D = Existing Mag Spike



Curve Data

(C - 1)
 Radius = 114.95'
 Arc Length = 41.07'
 Delta = 20°-28'-15"
 Chord Distance = 40.85'
 Chord Bearing = S 35°-32'-40" E

20

Distance Data

D - 1 = 4.98'



This plat and descriptions survey completed under supervision of

Kyle J. Binkley



Line Data