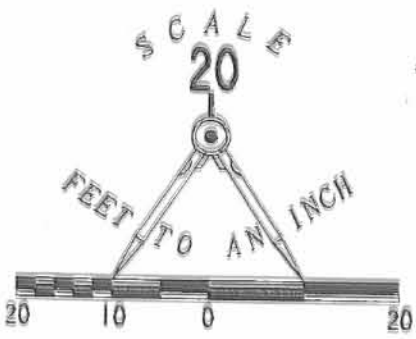
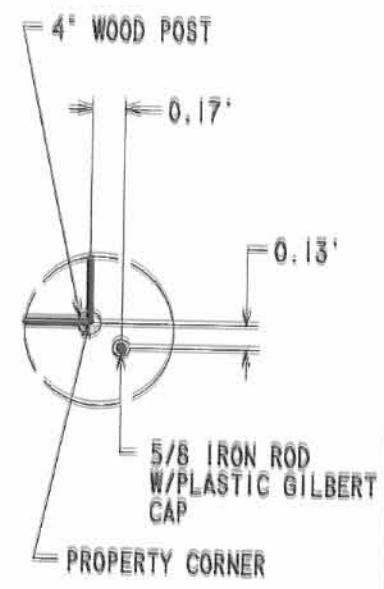


REC'D 4-28-97 SWY



LEGEND

- IRON ROD SET
- ⊗ RAILROAD SPIKE FOUND
- ⊙ 3/4" IRON PIPE FOUND
- 4" WOOD POST FOUND



SHOWN 10x SCALE

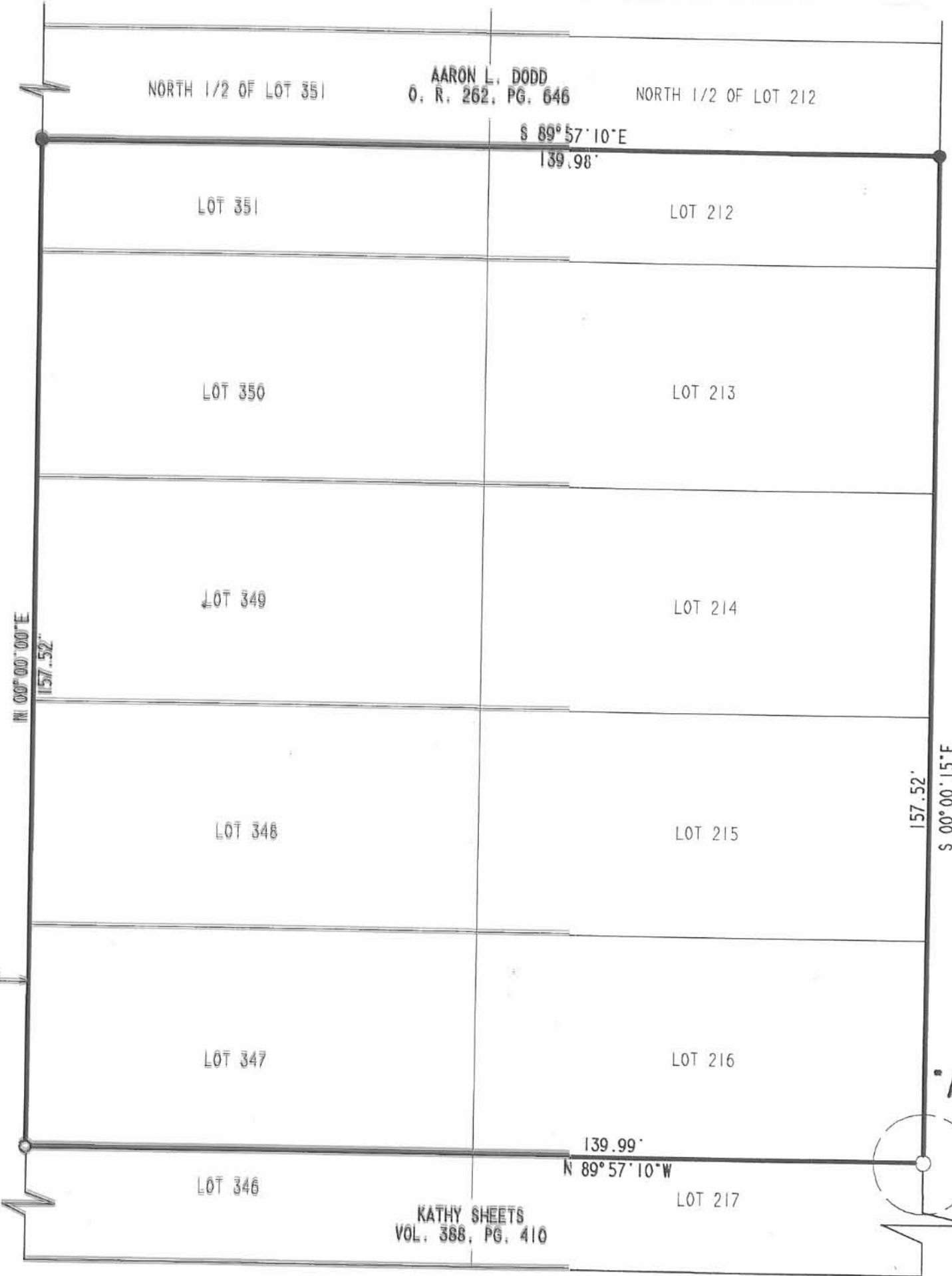
2 WORKING DAYS

BEFORE YOU DIG

CALL TOLL FREE 800-362-2764
OHIO UTILITIES PROTECTION SERVICE.

HIAWATHA PATH (35")

332.54'
N 00°00'00"E (BASIS FOR BEARINGS)



POCAHONTAS PATH (35")

RETRACEMENT SURVEY OF THE
RANDY F. McCLANE & BETTY L. McCLANE
LOTS 213, 214, 215, 216, 347, 348,
349, 350, AND THE SOUTH HALF OF
LOTS 212 AND 351
CHIPPEWA PARK NO. 1
OFFICIAL RECORD 299, PAGE 253
VIRGINIA MILITARY SURVEY 12276
STOKES TOWNSHIP
LOGAN COUNTY, OHIO



ORIGINAL STAMP IN GREEN

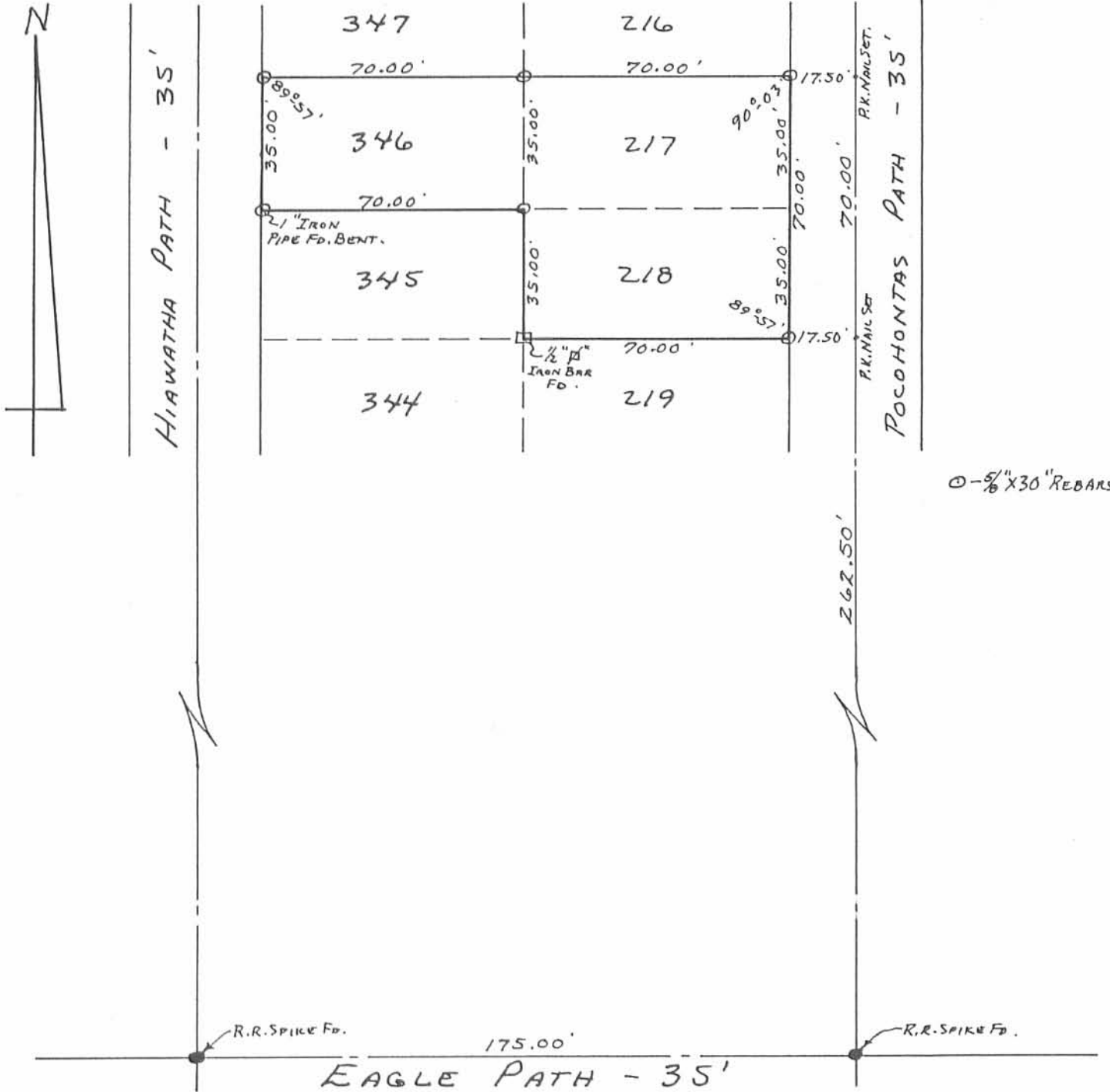
SURVEYED BY:
Jeffrey I. Lee
JEFFREY I. LEE
PROFESSIONAL SURVEYOR 6359
APRIL 24, 1997

COPYRIGHT 1997 BY:
LEE SURVEYING & MAPPING CO., INC.
117 North Madriver Street
BELLEFONTAINE, OHIO 43311
(937) 593-7335

INDEXED ON MAP
7751 IP

EAGLE PATH (35")

Received 1-4-88



⊙ - 5/8" X 30" REBARS SET.

INDEXED ON MAP
7751 2P

Daniel E. Gilbert
DANIEL E. GILBERT P.S.
REG. SUR. NO. 5402
400 N. PARK ST.
BELLEFONTAINE, OHIO
43311



SURVEY OF LOTS 217, 218, 346
CHIPPEWA PARK NO. 1
STOKES TOWNSHIP
LOGAN COUNTY, OHIO
MARCH 30, 1988
SCALE: 1" = 40'

088-010

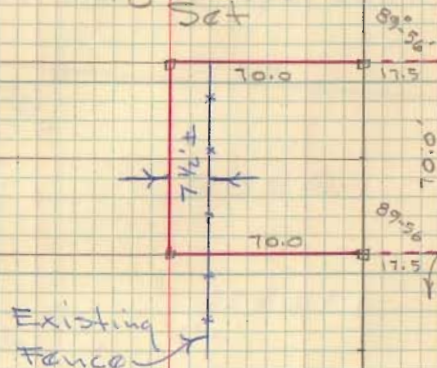
Lot 217-218
Chippewa Park

Dodson
Geeslin

October 1959

64

5/8" Bars
Set



Existing
Fence

7 @ 35' + 17 1/2' = 262.5'

INDEXED ON MAP

7751

175.0'

175.0'

89.56

Front
Fence

SURVEY OF LOT 346
CHIPPEWA PARK

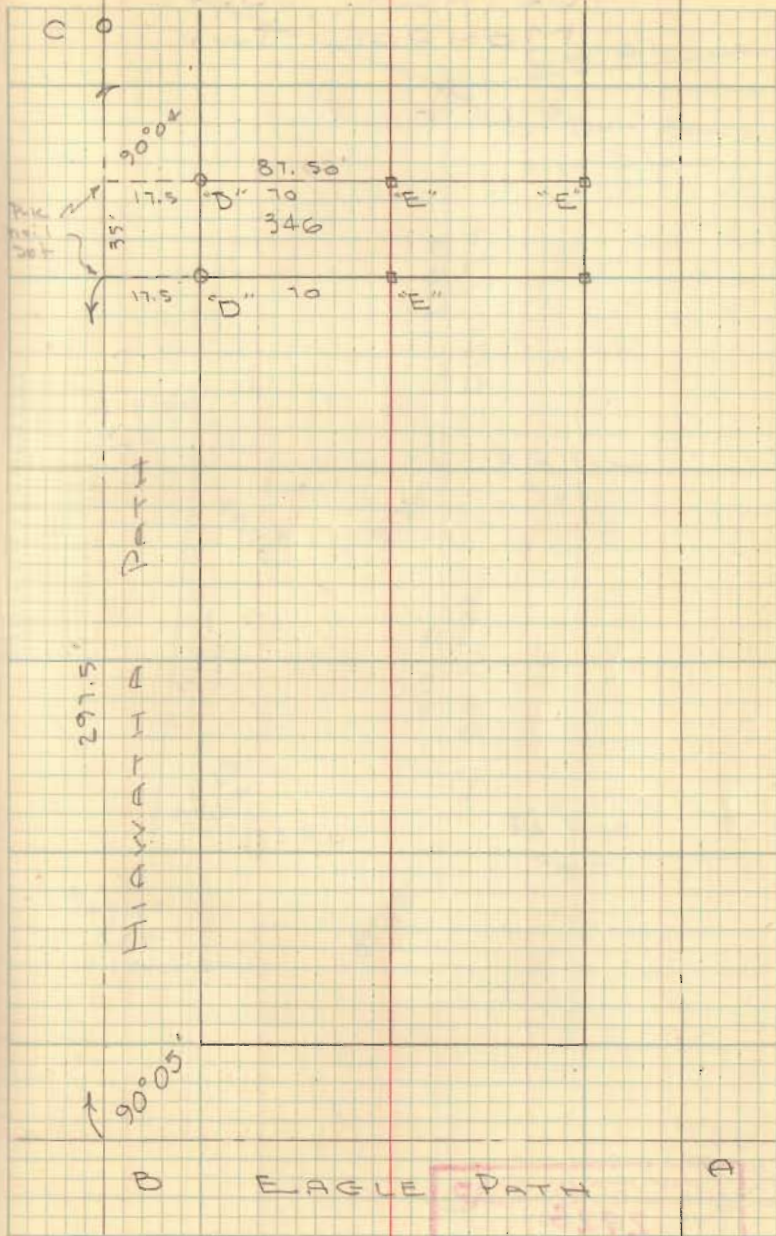
- A = "T" shaped iron found
- B = " " " " "
- C = 3/4" Pipe found @ S. line S.R. 69
- D = 3/4" Pipe Set
- E = 5/8" Bar found - set by D.L.D.

See BK

Dodson
L. Geeslin

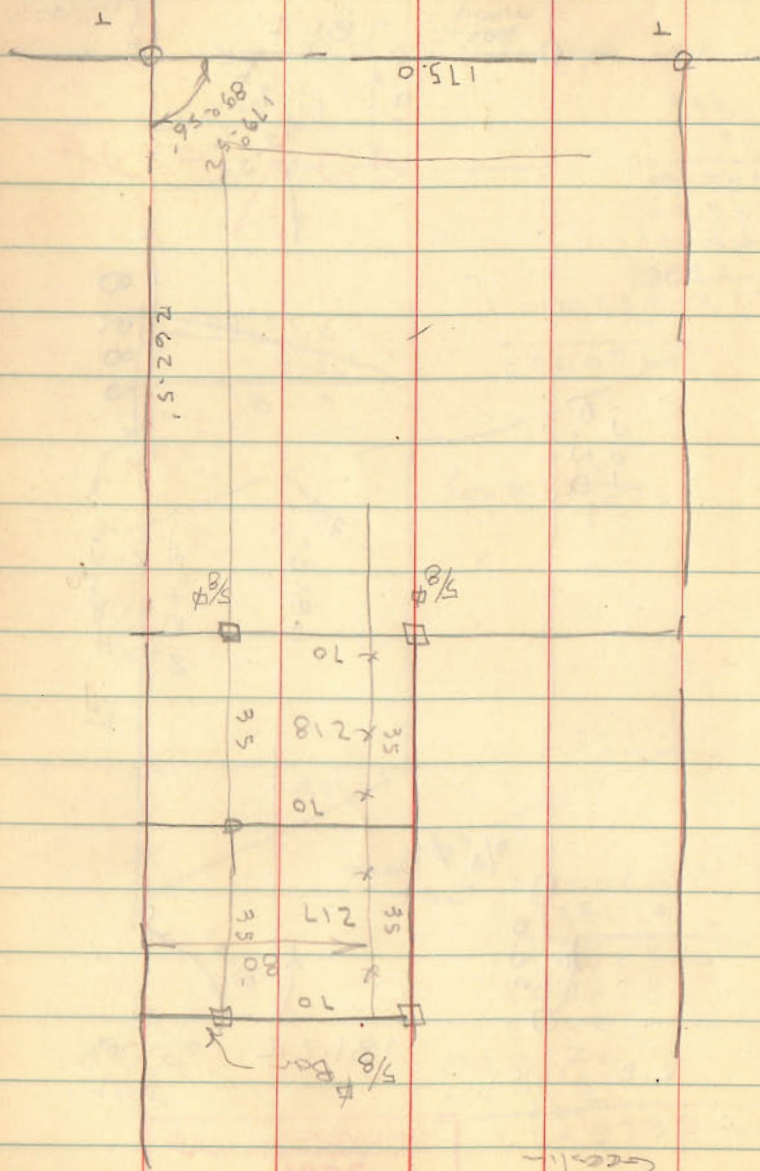
3-24-62
50°

26



INDEXED ON MAP
7751

INDEXED ON MAP



Dodson
Gesslin

35

Lot 217-218

Chippewa Base

1

INDEXED ON MAP
7751

81 1/2'

262.5
17.5
245
7
35

SURVEY OF
LOT 346
CHIPPEWA PARK

35
8

280
17.5

297.5

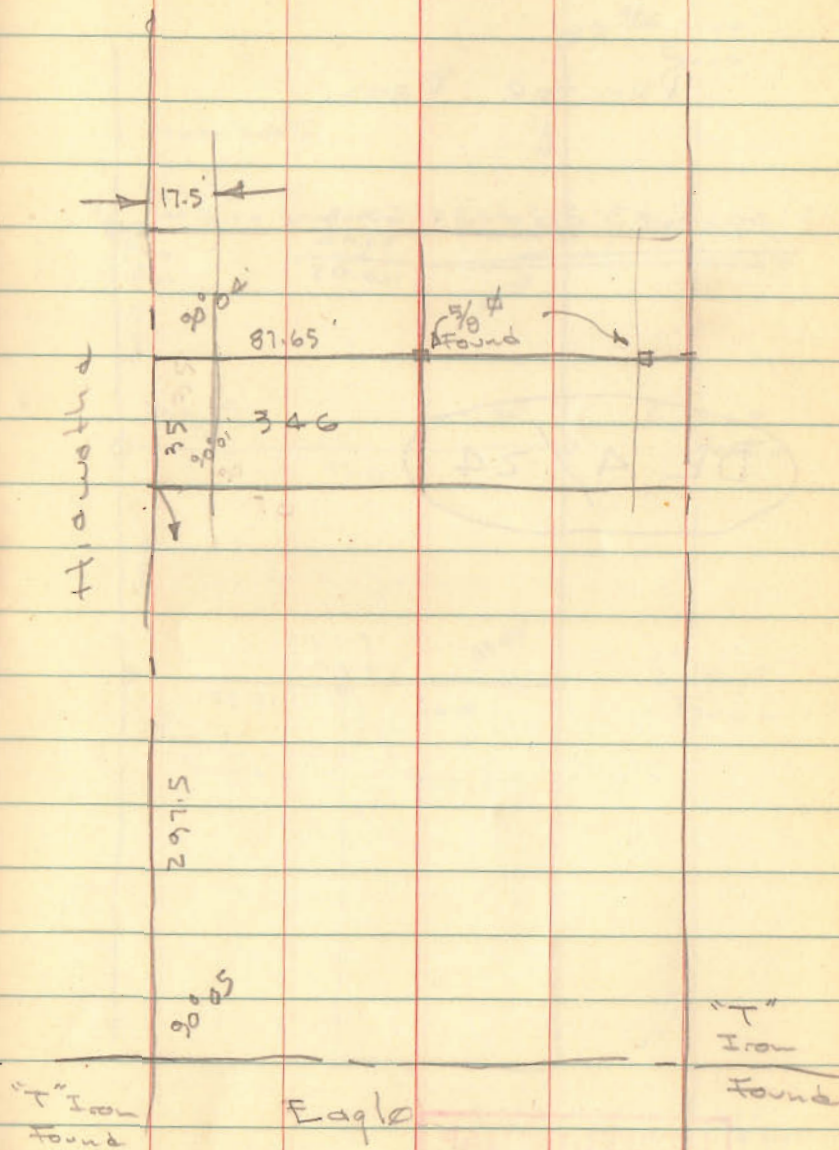
Bl 4/26

INDEXED ON MAP
7751

Dodson
L. Goslin

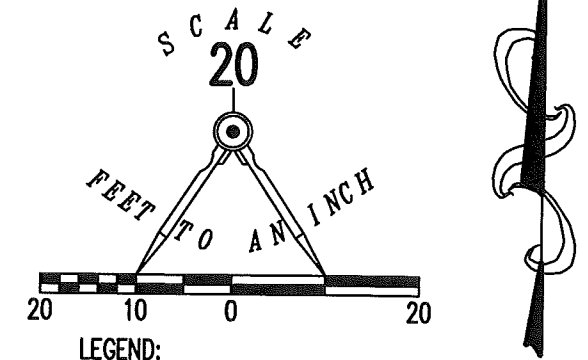
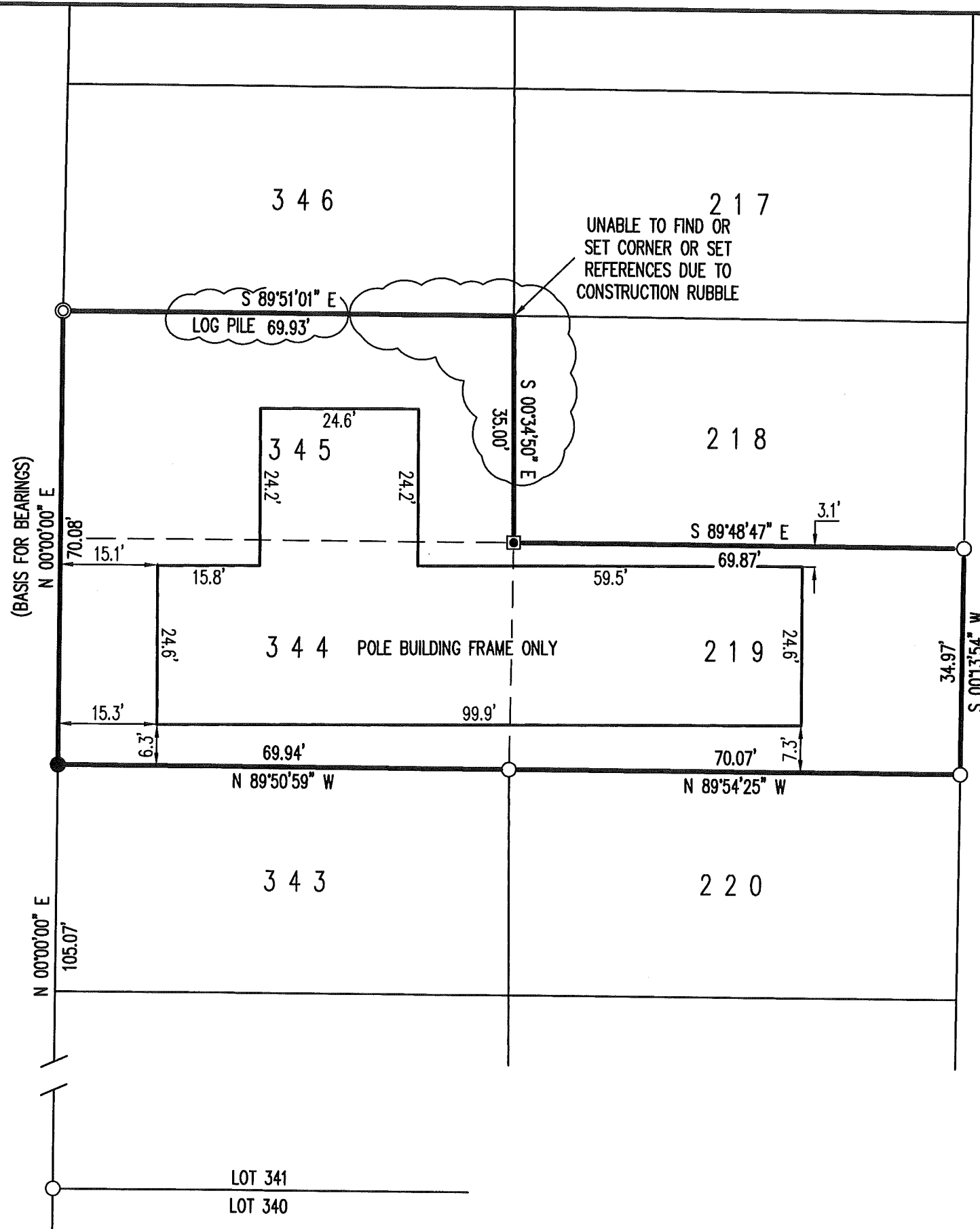
3-24-62

17



HIAWATHA PATH (35')

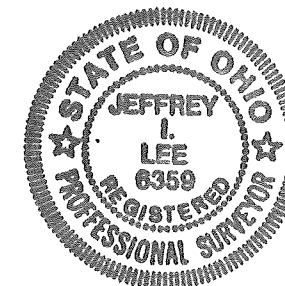
POCAHONTAS PATH (35')



RETRACEMENT SURVEY OF
 LOTS 219, 344 AND 345
 CHIPPEWA PARK NO. 1
 PLAT CABINET A, SLIDE 221
 VIRGINIA MILITARY SURVEY 12276
 STOKES TOWNSHIP
 LOGAN COUNTY, OHIO

SURVEYED BY:

Jeffrey J. Lee
 JEFFREY J. LEE
 PROFESSIONAL SURVEYOR 6359
 NOVEMBER 17, 2017



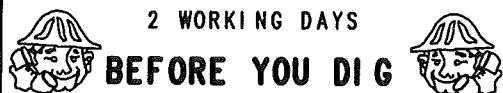
ORIGINAL STAMP IN GREEN

COPYRIGHT 2017 BY:
LEE SURVEYING & MAPPING CO., INC.
 117 North Madriver Street
 BELLEFONTAINE, OHIO 43311
 (937) 593-7335
 WWW.LSMINC.US
 surveys@lsminc.us

KSS D1117 18171117 L-1817-3

THIS SURVEY WAS PREPARED IN THE ABSENCE OF A COMPLETE AND ACCURATE TITLE SEARCH AND DOES NOT GUARANTEE TITLE.

2 WORKING DAYS



BEFORE YOU DIG

CALL TOLL FREE 800-362-2764

OHIO UTILITIES PROTECTION SERVICE

LOT 341
LOT 340

INDEXED ON MAP
77512