

REC'D 9-19-06 SML/CA

Lee Surveying and Mapping Co., Inc.

Land Surveys • Topography • Subdivisions • Construction Layout

117 N. Madriver St.
Bellefontaine OH 43311



Phone: (937) 593-7335
Fax: (937) 593-7444

1975-2005 - 30 YEARS OF EXCELLENCE

**ARBOGAST
0.009 ACRE**

Lying in Virginia Military Survey 12276, Stokes Township, Logan County, Ohio.

Being out of the Thomas L. Arbogast and Betty J. Arbogast 0.536 acre tract as deeded and described in Official Record 755, Page 713, Tract Three of the Logan County Records of Deeds and being more particularly described as follows:

Commencing at a MAG nail found on the center-line of Ohio Route 235 at the southeast corner of the Sam Karg, Jr. 5.004 acre tract (O.R. 326, Pg. 203).

THENCE, with the center-line of Ohio Route 235 (60 feet wide), N 70°-45'-00"E, a distance of 8.00 feet to a MAG nail set at the TRUE POINT OF BEGINNING.

THENCE, N 15°-55'-37"W, a distance of 196.11 feet to a 5/8 inch iron rod set, passing a 5/8 inch iron rod set at 30.03 feet.

THENCE, with the south line of the Thomas L. Arbogast and Betty J. Arbogast 0.338 acre tract (O.R. 755, Pg. 713, Tract Four), N 70°-45'-01"E, a distance of 2.00 feet to a 5/8 inch iron rod set.

THENCE, S 15°-55'-37"E, a distance of 196.11 feet to a MAG nail set on the center-line of Ohio Route 235, passing a 5/8 inch iron rod set at 166.08 feet.

THENCE, with the center-line of Ohio Route 235, S 70°-45'-00"W, a distance of 2.00 feet to the point of beginning.

Containing 0.009 acre, of which 0.001 acre is within the highway right-of-way.

The basis for bearings is the center-line of Ohio Route 235, being S 70°-45'-00"W, and all other bearings are from angles and distances measured in a field survey by Lee Surveying and Mapping Co., Inc. on September 12, 2006.



ORIGINAL STAMP IN GREEN

Description prepared by:

Jeffrey I. Lee
Jeffrey I. Lee
Professional Surveyor 6359
September 15, 2006

3061096

12D-1
INDEXED ON MAP
6001

REC'D 9-19-06 SMY OK
Lee Surveying and Mapping Co., Inc.

Land Surveys • Topography • Subdivisions • Construction Layout

117 N. Madriver St.
Bellefontaine OH 43311



Phone: (937) 593-7335
Fax: (937) 593-7444

1975-2005 - 30 YEARS OF EXCELLENCE

**ARBOGAST
0.045 ACRE**

Lying in Virginia Military Survey 12276, Stokes Township, Logan County, Ohio.

Being out of the Thomas L. Arbogast and Betty J. Arbogast 0.338 acre tract as deeded and described in Official Record 755, Page 713, Tract Four of the Logan County Records of Deeds and being more particularly described as follows:

Commencing at a MAG nail found on the center-line of Ohio Route 235 at the southeast corner of the Sam Karg, Jr. 5.004 acre tract (O.R. 326, Pg. 203).

THENCE, with the center-line of Ohio Route 235 (60 feet wide), N 70°-45'-00"E, a distance of 120.29 feet to a MAG nail set at the TRUE POINT OF BEGINNING.

THENCE, with the east line of the Thomas L. Arbogast and Betty J. Arbogast 0.536 acre tract (O.R. 755, Pg. 713, Tract Three) N 16°-30'-57"W, a distance of 196.00 feet to a 5/8 inch iron rod set, passing a 5/8 inch iron rod set at 30.03 feet.

THENCE, N 70°-45'-01"E, a distance of 10.00 feet to a 5/8 inch iron rod set.

THENCE, with a west line of the remainder of the Thomas L. Arbogast and Betty J. Arbogast original 99.151 acre tract (O.R. 476, Pg. 489), S 16°-30'-57"E, a distance of 196.00 feet to a MAG nail set on the center-line of Ohio Route 235, passing a 5/8 inch iron rod set at 165.97 feet.

THENCE, with the center-line of Ohio Route 235, S 70°-45'-00"W, a distance of 10.00 feet to the point of beginning.

Containing 0.045 acre, of which 0.007 acre is within the highway right-of-way.

The basis for bearings is the center-line of Ohio Route 235, being S 70°-45'-00"W, and all other bearings are from angles and distances measured in a field survey by Lee Surveying and Mapping Co., Inc. on September 12, 2006.

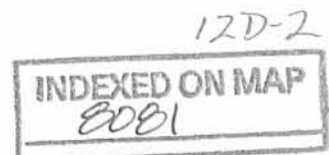


ORIGINAL STAMP IN GREEN

Description prepared by:

A handwritten signature in black ink, appearing to read 'J. Lee', is written over the typed name and title.
Jeffrey I. Lee
Professional Surveyor 6359
September 15, 2006

3061096



REC'D 9-19-06 SMM OK
Lee Surveying and Mapping Co., Inc.

Land Surveys • Topography • Subdivisions • Construction Layout

117 N. Madriver St.
Bellefontaine OH 43311



Phone: (937) 593-7335
Fax: (937) 593-7444

1975-2005 - 30 YEARS OF EXCELLENCE

**ARBOGAST
0.225 ACRE**

Lying in Virginia Military Survey 12276, Stokes Township, Logan County, Ohio.

Being out of the Thomas L. Arbogast and Betty J. Arbogast original 99.151 acre tract as deeded and described in Official Record 476, Page 489 and the 0.412 acre tract as deeded and described in Official Record 755, Page 713, Tract Two of the Logan County Records of Deeds and being more particularly described as follows:

Commencing at a MAG nail found on the center-line of Ohio Route 235 at the southeast corner of the Sam Karg, Jr. 5.004 acre tract (O.R. 326, Pg. 203).

THENCE, with the center-line of Ohio Route 235 (60 feet wide), N 70°-45'-00"E, a distance of 130.29 feet to a MAG nail set at the TRUE POINT OF BEGINNING.

THENCE, with the east line of the Thomas L. Arbogast and Betty J. Arbogast 0.338 acre tract (O.R. 755, Pg. 713, Tract Four) N 16°-30'-57"W, a distance of 196.00 feet to a 5/8 inch iron rod set, passing a 5/8 inch iron rod set at 30.03 feet.

THENCE, N 70°-45'-01"E, a distance of 50.00 feet to a 5/8 inch iron rod set.

THENCE, with the west line of the Thomas L. Arbogast and Betty J. Arbogast 0.674 acre tract (O.R. 755, Pg. 713, Tract One), S 16°-30'-57"E, a distance of 196.00 feet to a MAG nail set on the center-line of Ohio Route 235, passing a 5/8 inch iron rod set at 165.97 feet.

THENCE, with the center-line of Ohio Route 235, S 70°-45'-00"W, a distance of 50.00 feet to the point of beginning.

Containing 0.225 acre, of which 0.034 acre is within the highway right-of-way.

The basis for bearings is the center-line of Ohio Route 235, being S 70°-45'-00"W, and all other bearings are from angles and distances measured in a field survey by Lee Surveying and Mapping Co., Inc. on September 12, 2006.

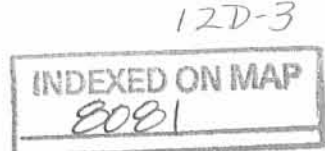


ORIGINAL STAMP IN GREEN

Description prepared by:

Jeffrey I. Lee
Professional Surveyor 6359
September 15, 2006

3061096



20210 9-19-06 SAM PLC
Lee Surveying and Mapping Co., Inc.

Land Surveys • Topography • Subdivisions • Construction Layout

117 N. Madriver St.
Bellefontaine OH 43311



Phone: (937) 593-7335
Fax: (937) 593-7444

1975-2005 - 30 YEARS OF EXCELLENCE

**ARBOGAST
0.865 ACRE**

Lying in Virginia Military Survey 12276, Stokes Township, Logan County, Ohio.

Being out of the Thomas L. Arbogast 5.130 acre tract as deeded and described in Official Record 264, Page 728 of the Logan County Records of Deeds and being more particularly described as follows:

Commencing at a MAG nail found on the center-line of Ohio Route 235 at the southeast corner of the Sam Karg, Jr. 5.004 acre tract (O.R. 326, Pg. 203).

THENCE, with the center-line of Ohio Route 235 (60 feet wide), N 70°-45'-00"E, a distance of 330.29 feet to a MAG nail found at the TRUE POINT OF BEGINNING.

THENCE, with the east line of the Thomas L. Arbogast and Betty J. Arbogast 0.674 acre tract (O.R. 755, Pg. 713, Tract One) N 16°-30'-57"W, a distance of 196.00 feet to a 5/8 inch iron rod set, passing a 5/8 inch iron rod found at 30.03 feet.

THENCE, N 70°-45'-01"E, a distance of 192.53 feet to a 5/8 inch iron rod set.

THENCE, S 16°-30'-28"E, a distance of 196.00 feet to a MAG nail set on the center-line of Ohio Route 235, passing a 5/8 inch iron rod set at 165.97 feet.

THENCE, with the center-line of Ohio Route 235, S 70°-45'-00"W, a distance of 192.50 feet to the point of beginning.

Containing 0.865 acre, of which 0.133 acre is within the highway right-of-way.

The basis for bearings is the center-line of Ohio Route 235, being S 70°-45'-00"W, and all other bearings are from angles and distances measured in a field survey by Lee Surveying and Mapping Co., Inc. on November 30, 2004.



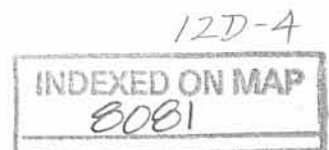
ORIGINAL STAMP IN GREEN

Description prepared by:

A handwritten signature in black ink, appearing to read 'Jeffrey I. Lee'.

Jeffrey I. Lee
Professional Surveyor 6359
September 15, 2006

3061096



REC'D 9-19-06 SJW/ole
Lee Surveying and Mapping Co., Inc.

Land Surveys • Topography • Subdivisions • Construction Layout

117 N. Madriver St.
Bellefontaine OH 43311



Phone: (937) 593-7335
Fax: (937) 593-7444

1975-2005 - 30 YEARS OF EXCELLENCE

**ARBOGAST
25.469 ACRES**

Lying in Virginia Military Survey 12276, Stokes Township, Logan County, Ohio.

Being out of the Thomas L. Arbogast and Betty J. Arbogast 0.536 acre tract as deeded and described in Official Record 755, Page 713, Tract Three, 0.338 acre tract as deeded and described in Official Record 755, Page 713, Tract Four and the original 99.151 acre tract as deeded and described in Official Record 476, Page 489 of the Logan County Records of Deeds and being more particularly described as follows:

Beginning at a MAG nail found on the center-line of Ohio Route 235 at the southeast corner of the Sam Karg, Jr. 5.004 acre tract (O.R. 326, Pg. 203).

THENCE, with the lines of the said 5.004 acre tract, the following two courses:

N 15°-55'-37"W, a distance of 661.16 feet to a 5/8 inch iron rod found, passing a 5/8 inch iron rod found at 30.03 feet.

S 70°-46'-06"W, a distance of 329.95 feet to a 5/8 inch iron rod found.

THENCE, with a north line of the Janis R. Dawson 108.8 acre tract (O.R. 686, Pg. 761, Tract 2), S 69°-56'-30"W, a distance of 732.98 feet to a stone found on the west line of Virginia Military Survey 12276.

THENCE, with the west line of Virginia Military Survey 12276 and an east line of the said 108.8 acre tract, N 28°-20'-56"W, a distance of 1258.14 feet to a 5/8 inch iron rod set.

THENCE, N 73°-29'-16"E, a distance of 1010.06 feet to a 5/8 inch iron rod set.

THENCE, S 19°-48'-08"E, a distance of 1181.81 feet to a 5/8 inch iron rod set.

THENCE, N 70°-46'-06"E, a distance of 243.65 feet to a 5/8 inch iron rod set.

THENCE, S 15°-55'-37"E, a distance of 663.16 feet to a MAG nail set on the center-line of Ohio Route 235, passing a 5/8 inch iron rod set at 633.13 feet

THENCE, with the center-line of Ohio Route 235, S 70°-45'-00"W, a distance of 2.00 feet to the point of beginning.

Containing 25.469 acres, of which 0.001 acre is within the highway right-of-way.

The basis for bearings is the center-line of Ohio Route 235, being S 70°-45'-00"W, and all other bearings are from angles and distances measured in a field survey by Lee Surveying and Mapping Co., Inc. on September 12, 2006.

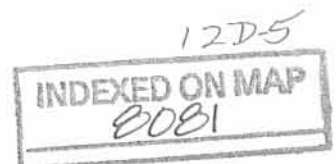


ORIGINAL STAMP IN GREEN

Description prepared by:

Jeffrey I. Lee
Professional Surveyor 6359
September 15, 2006

3061096



REC 112 9-19-06 SAM COE
Lee Surveying and Mapping Co., Inc.

Land Surveys • Topography • Subdivisions • Construction Layout

117 N. Madriver St.
Bellefontaine OH 43311



Phone: (937) 593-7335
Fax: (937) 593-7444

1975-2005 - 30 YEARS OF EXCELLENCE

**ARBOGAST
25.577 ACRES
TRACT A**

Lying in Virginia Military Survey 12276, Stokes Township, Logan County, Ohio.

Being out of the Thomas L. Arbogast and Betty J. Arbogast 0.536 acre tract as deeded and described in Official Record 755, Page 713, Tract Three, 0.338 acre tract as deeded and described in Official Record 755, Page 713, Tract Four and the original 99.151 acre tract as deeded and described in Official Record 476, Page 489 of the Logan County Records of Deeds and being more particularly described as follows:

Beginning at a MAG nail found on the center-line of Ohio Route 235 at the southeast corner of the Sam Karg, Jr. 5.004 acre tract (O.R. 326, Pg. 203).

THENCE, with the center-line of Ohio Route 235 (60 feet wide), N 70°-45'-00"E, a distance of 2.00 feet to a MAG nail set at the TRUE POINT OF BEGINNING.

THENCE, N 15°-55'-37"W, a distance of 663.16 feet to a 5/8 inch iron rod set, passing a 5/8 inch iron rod set at 30.03 feet.

THENCE, S 70°-46'-06"W, a distance of 243.65 feet to a 5/8 inch iron rod set.

THENCE, N 19°-48'-08"W, a distance of 1181.81 feet to a 5/8 inch iron rod set.

THENCE, S 73°-29'-16"W, a distance of 1010.06 feet to a 5/8 inch iron rod set on the west line of Virginia Military Survey 12276.

THENCE, with the west line of Virginia Military Survey 12276 and an east line of the Janis R. Dawson 108.8 acre tract and 31 acre tract (O.R. 686, Pg. 761, Tract 2 and 1), N 28°-20'-56"W, a distance of 1040.87 feet to a 5/8 inch iron rod set.

THENCE, with the south line of the Charles G. Siebeneck and Carol J. Siebeneck, Trustees of the Charles G. Siebeneck Living Trust, 60 acre tract (O.R. 252, Pg. 299, Tract I), N 73°-29'-16"E, a distance of 1167.01 feet to a 5/8 inch iron rod set.

THENCE, S 19°-48'-08"E, a distance of 2200.13 feet to a 5/8 inch iron rod set.

THENCE, N 70°-46'-06"E, a distance of 243.79 feet to a 5/8 inch iron rod set.

THENCE, S 15°-55'-37"E, a distance of 665.16 feet to a MAG nail set on the center-line of Ohio Route 235, passing a 5/8 inch iron rod set at 635.13 feet

THENCE, with the center-line of Ohio Route 235, S 70°-45'-00"W, a distance of 2.00 feet to the point of beginning.

Containing 25.577 acres, of which 0.001 acre is within the highway right-of-way.

The basis for bearings is the center-line of Ohio Route 235, being S 70°-45'-00"W, and all other bearings are from angles and distances measured in a field survey by Lee Surveying and Mapping Co., Inc. on September 12, 2006.



ORIGINAL STAMP IN GREEN

Description prepared by:


Jeffrey I. Lee
Professional Surveyor 6359
September 15, 2006



3061096

Lee Surveying and Mapping Co., Inc.

Land Surveys • Topography • Subdivisions • Construction Layout

117 N. Madriver St.
Bellefontaine OH 43311



Phone: (937) 593-7335
Fax: (937) 593-7444

1975-2005 - 30 YEARS OF EXCELLENCE

**ARBOGAST
25.577 ACRES
TRACT B**

Lying in Virginia Military Survey 12276, Stokes Township, Logan County, Ohio.

Being out of the Thomas L. Arbogast and Betty J. Arbogast 0.536 acre tract as deeded and described in Official Record 755, Page 713, Tract Three, 0.338 acre tract as deeded and described in Official Record 755, Page 713, Tract Four and the original 99.151 acre tract as deeded and described in Official Record 476, Page 489 of the Logan County Records of Deeds and being more particularly described as follows:

Beginning at a MAG nail found on the center-line of Ohio Route 235 at the southeast corner of the Sam Karg, Jr. 5.004 acre tract (O.R. 326, Pg. 203).

THENCE, with the center-line of Ohio Route 235 (60 feet wide), N 70°-45'-00"E, a distance of 4.00 feet to a MAG nail set at the TRUE POINT OF BEGINNING.

THENCE, N 15°-55'-37"W, a distance of 665.16 feet to a 5/8 inch iron rod set, passing a 5/8 inch iron rod set at 30.03 feet.

THENCE, S 70°-46'-06"W, a distance of 243.79 feet to a 5/8 inch iron rod set.

THENCE, N 19°-48'-08"W, a distance of 2200.13 feet to a 5/8 inch iron rod set.

THENCE, with the south line of the Charles G. Siebeneck and Carol J. Siebeneck, Trustees of the Charles G. Siebeneck Living Trust, 60 acre tract (O.R. 252, Pg. 299, Tract I), N 73°-29'-16"E, a distance of 1142.91 feet to a 5/8 inch iron rod set.

THENCE, with the west lines of the Jessica L. Stephens 14.640 acre tract (O.R. 842, Pg. 22) and the Daryl Stephens 14.640 acre tract (O.R. 446, Pg. 121), S 21°-02'-27"E, a distance of 537.26 feet to a 1/2 inch iron rod found.

THENCE, with the north line of the George M. Lones, Sr., 25 acre tract (O.R. 416, Pg. 590), S 73°-29'-02"W, a distance of 285.99 feet to a 5/8 inch iron rod set.

THENCE, with the west lines of the said 25 acre tract and the Aerie 3615, Fraternal Order of Eagles, Inc., 30.0 acre tract (O.R. 235, Pg. 422, Tract II), S 16°-30'-28"E, a distance of 677.63 feet to a 5/8 inch iron rod set.

THENCE, S 86°-30'-49"W, a distance of 860.86 feet to a 5/8 inch iron rod set.

THENCE, S 19°-48'-08"E, a distance of 1177.15 feet to a 5/8 inch iron rod set.

THENCE, N 70°-46'-06"E, a distance of 243.92 feet to a 5/8 inch iron rod set.

THENCE, S 15°-55'-37"E, a distance of 667.16 feet to a MAG nail set on the center-line of Ohio Route 235, passing a 5/8 inch iron rod set at 637.13 feet

THENCE, with the center-line of Ohio Route 235, S 70°-45'-00"W, a distance of 2.00 feet to the point of beginning.

Containing 25.577 acres, of which 0.001 acre is within the highway right-of-way.

The basis for bearings is the center-line of Ohio Route 235, being S 70°-45'-00"W, and all other bearings are from angles and distances measured in a field survey by Lee Surveying and Mapping Co., Inc. on September 12, 2006.

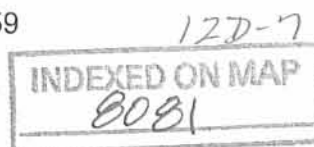


ORIGINAL STAMP IN GREEN

Description prepared by:

A handwritten signature in black ink, appearing to read 'Jeffrey I. Lee'.

Jeffrey I. Lee
Professional Surveyor 6359
September 15, 2006



3061096

REC'D 9-19-06 SMY OK
Lee Surveying and Mapping Co., Inc.

Land Surveys • Topography • Subdivisions • Construction Layout

117 N. Madriver St.
Bellefontaine OH 43311



Phone: (937) 593-7335
Fax: (937) 593-7444

1975-2005 - 30 YEARS OF EXCELLENCE

**ARBOGAST
25.339 ACRES**

Lying in Virginia Military Survey 12276, Stokes Township, Logan County, Ohio.

Being out of the Thomas L. Arbogast and Betty J. Arbogast 0.412 acre tract as deeded and described in Official Record 755, Page 713, Tract Two, 0.536 acre tract as deeded and described in Official Record 755, Page 713, Tract Three, 0.338 acre tract as deeded and described in Official Record 755, Page 713, Tract Four and the original 99.151 acre tract as deeded and described in Official Record 476, Page 489 and the Thomas L. Arbogast 5.130 acre tract as deeded and described in Official Record 264, Page 728 of the Logan County Records of Deeds and being more particularly described as follows:

Beginning at a MAG nail found on the center-line of Ohio Route 235 at the southeast corner of the Sam Karg, Jr. 5.004 acre tract (O.R. 326, Pg. 203).

THENCE, with the center-line of Ohio Route 235 (60 feet wide), N 70°-45'-00"E, a distance of 6.00 feet to a MAG nail set at the TRUE POINT OF BEGINNING.

THENCE, N 15°-55'-37"W, a distance of 667.16 feet to a 5/8 inch iron rod set, passing a 5/8 inch iron rod set at 30.03 feet.

THENCE, S 70°-46'-06"W, a distance of 243.92 feet to a 5/8 inch iron rod set.

THENCE, N 19°-48'-08"W, a distance of 1177.15 feet to a 5/8 inch iron rod set.

THENCE, N 86°-30'-49"E, a distance of 860.86 feet to a 5/8 inch iron rod set.

THENCE, with the west line of the Aerie 3615, Fraternal Order of Eagles, Inc., 30.0 acre tract (O.R. 235, Pg. 422, Tract II), S 16°-30'-28"E, a distance of 1611.18 feet to a MAG nail set on the center-line of Ohio Route 235, passing a 5/8 inch iron rod found at 550.98 feet and a 5/8 inch iron rod set at 1581.15 feet.

THENCE, with the center-line of Ohio Route 235, S 70°-45'-00"W, a distance of 18.02 feet to a MAG nail set.

THENCE, N 16°-30'-28"W, a distance of 196.00 feet to a 5/8 inch iron rod set, passing a 5/8 inch iron rod set at 30.03 feet.

THENCE, S 70°-45'-01"W, a distance of 192.53 feet to a 5/8 inch iron rod set.

THENCE, with the north line of the Thomas L. Arbogast and Betty J. Arbogast 0.674 acre tract (O.R. 755, Pg. 713, Tract One) and north line extended, S 70°-45'-01"W, a distance of 320.26 feet to a 5/8 inch iron rod set, passing 5/8 inch iron rods set at 150.00 feet, 200.00 feet, 210.00 feet and 318.26 feet.

THENCE, S 15°-55'-37"E, a distance of 196.11 feet to a MAG nail set on the center-line of Ohio Route 235, passing a 5/8 inch iron rod set at 166.08 feet

THENCE, with the center-line of Ohio Route 235, S 70°-45'-00"W, a distance of 2.00 feet to the point of beginning.

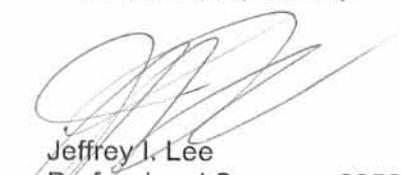
Containing 25.339 acres, of which 0.013 acre is within the highway right-of-way.

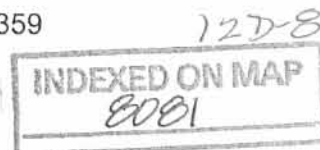
The basis for bearings is the center-line of Ohio Route 235, being S 70°-45'-00"W, and all other bearings are from angles and distances measured in a field survey by Lee Surveying and Mapping Co., Inc. on September 12, 2006.



ORIGINAL STAMP IN GREEN

Description prepared by:


Jeffrey I. Lee
Professional Surveyor 6359
September 15, 2006



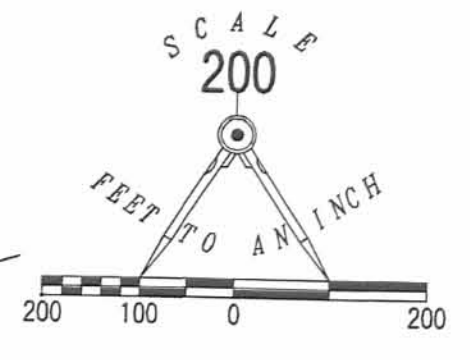
3061096

REC'D 9-19-06 SAM, OH

TOWNSHIP ROAD 224

JESSICA L. STEPHENS
14.640 ACRES
O.R. 842, PG. 22

CHARLES G. SIEBENECK
AND CAROL J. SIEBENECK,
TRUSTEES OF THE
CHARLES G. SIEBENECK LIVING TRUST
60 ACRES
O.R. 252, PG. 299
TRACT 1



LEGEND:

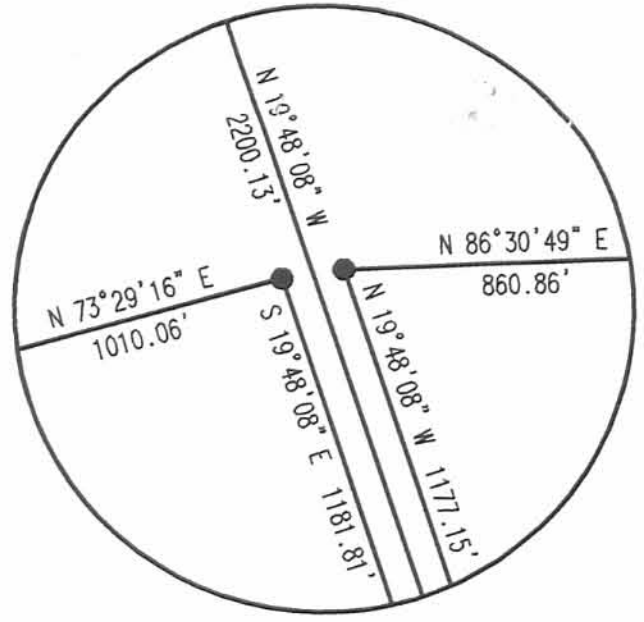
- ⊗ MAG NAIL FOUND
- ⊙ MAG NAIL SET
- 5/8 INCH IRON ROD SET
- 5/8 INCH IRON ROD FOUND
- ⊙ 1/2 INCH IRON ROD FOUND
- ⊠ STONE FOUND

DARYL STEPHENS
14.640 ACRES
O.R. 446, PG. 121

GEORGE M. LONES, SR.
25 ACRES
O.R. 416, PG. 590

AERIE 3615,
FRATERNAL ORDER
OF EAGLES, INC.
30.0 ACRES
O.R. 235, PG. 422
TRACT 11

DETAIL #4
NOT TO SCALE



JANIS R. DAWSON
31 ACRES
O.R. 686, PG. 761
TRACT 1

TRACT A
25.577 ACRES
OF WHICH 0.001 ACRE IS WITHIN
THE HIGHWAY RIGHT-OF-WAY
(25.563 ACRES)

TRACT B
25.577 ACRES
OF WHICH 0.001 ACRE IS WITHIN
THE HIGHWAY RIGHT-OF-WAY
(25.563 ACRES)

THOMAS L. ARBOGAST AND
BETTY J. ARBOGAST
ORIGINAL 99.151 ACRES
O.R. 476, PG. 489

JANIS R. DAWSON
108.8 ACRES
O.R. 686, PG. 761
TRACT 2

25.469 ACRES
OF WHICH 0.001 ACRE IS WITHIN
THE HIGHWAY RIGHT-OF-WAY
(25.455 ACRES)

25.339 ACRES
OF WHICH 0.013 ACRE IS WITHIN
THE HIGHWAY RIGHT-OF-WAY
(20.431 ACRES)

THOMAS L. ARBOGAST AND
BETTY J. ARBOGAST
ORIGINAL 99.151 ACRES
O.R. 476, PG. 489

THOMAS L. ARBOGAST AND
BETTY J. ARBOGAST
0.338 ACRE
O.R. 755, PG. 713
TRACT FOUR
(0.278 ACRE)

THOMAS L. ARBOGAST AND
BETTY J. ARBOGAST
0.536 ACRE
O.R. 755, PG. 713
TRACT THREE

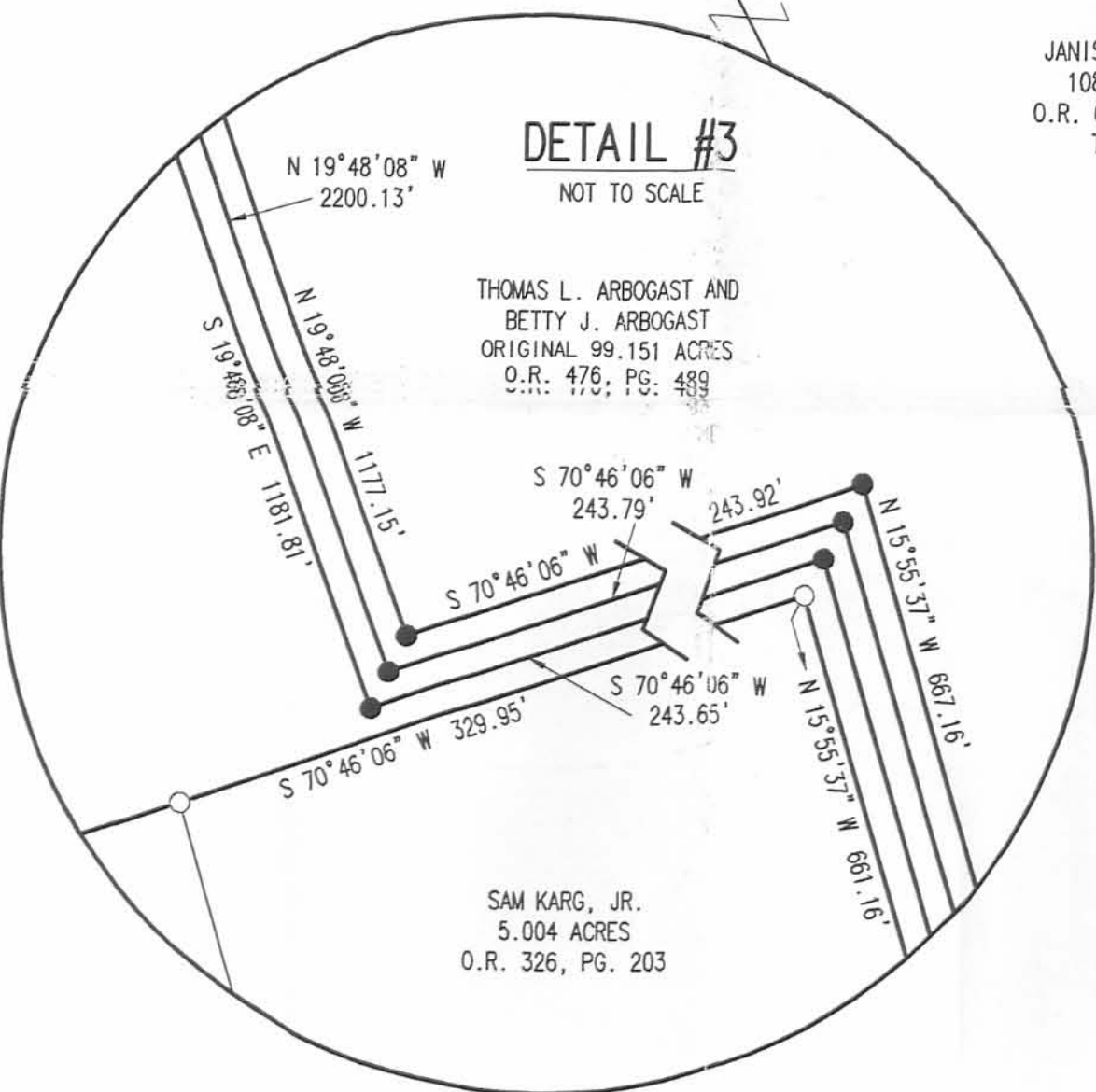
0.009 ACRE
OF WHICH 0.001 ACRE IS WITHIN
THE HIGHWAY RIGHT-OF-WAY

SAM KARG, JR.
5.004 ACRES
O.R. 326, PG. 203

JANIS R. DAWSON
108.8 ACRES
O.R. 686, PG. 761
TRACT 2

SAM KARG, JR.
5.004 ACRES
O.R. 326, PG. 203

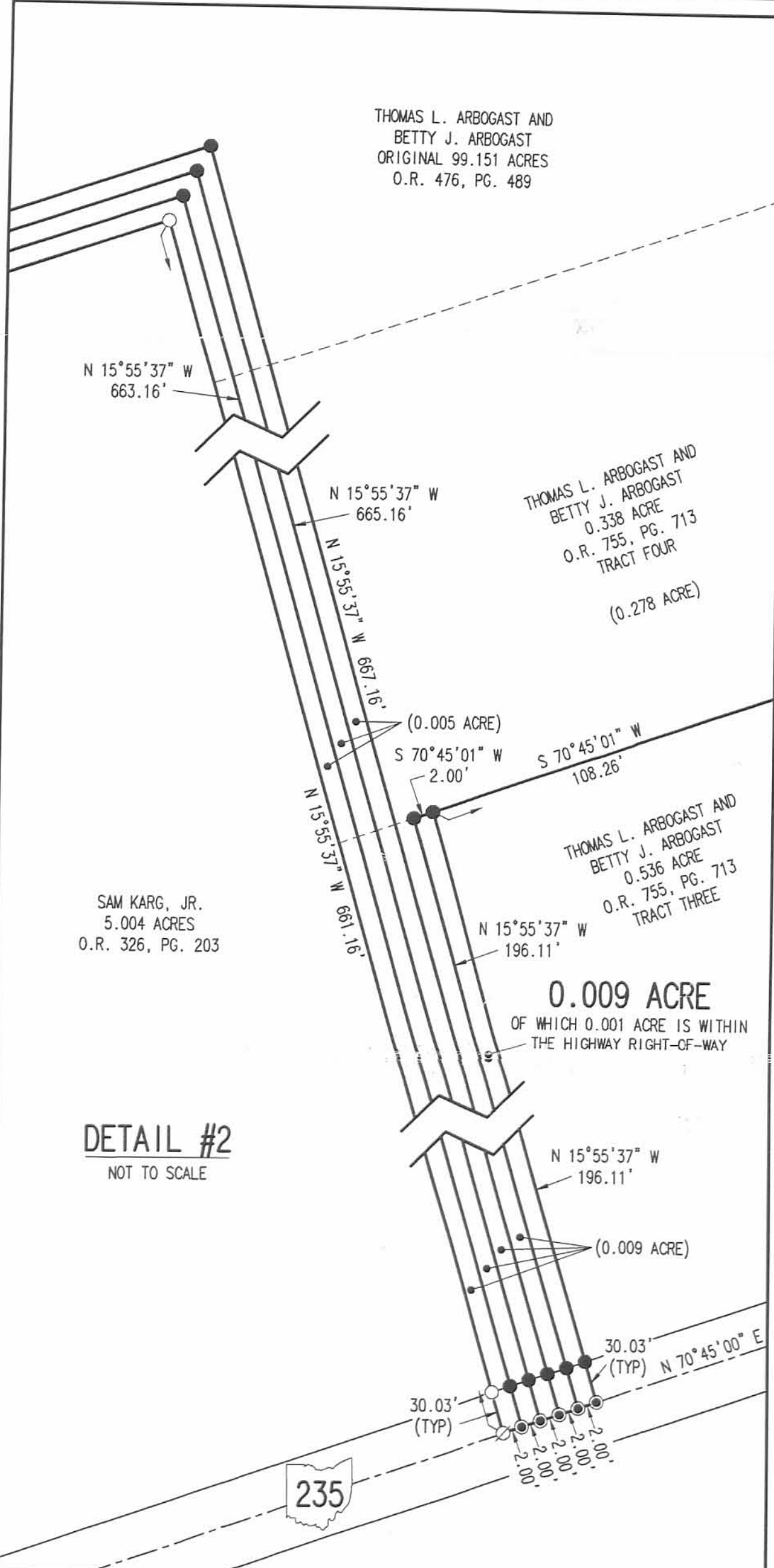
DETAIL #3
NOT TO SCALE



THOMAS L. ARBOGAST AND
BETTY J. ARBOGAST
ORIGINAL 99.151 ACRES
O.R. 476, PG. 489

SAM KARG, JR.
5.004 ACRES
O.R. 326, PG. 203

DETAIL #2
NOT TO SCALE



THOMAS L. ARBOGAST AND
BETTY J. ARBOGAST
ORIGINAL 99.151 ACRES
O.R. 476, PG. 489

THOMAS L. ARBOGAST
5.130 ACRES
O.R. 264, PG. 728
(4.254 ACRES)

AERIE 3615,
FRATERNAL ORDER
OF EAGLES, INC.
30.0 ACRES
O.R. 235, PG. 422
TRACT 11

THOMAS L. ARBOGAST AND
BETTY J. ARBOGAST
0.412 ACRE
O.R. 755, PG. 713
TRACT TWO
(0.367 ACRE)

THOMAS L. ARBOGAST AND
BETTY J. ARBOGAST
0.674 ACRE
O.R. 755, PG. 713
TRACT ONE

0.865 ACRE
OF WHICH 0.133 ACRE IS WITHIN
THE HIGHWAY RIGHT-OF-WAY

0.225 ACRE
OF WHICH 0.034 ACRE IS WITHIN
THE HIGHWAY RIGHT-OF-WAY

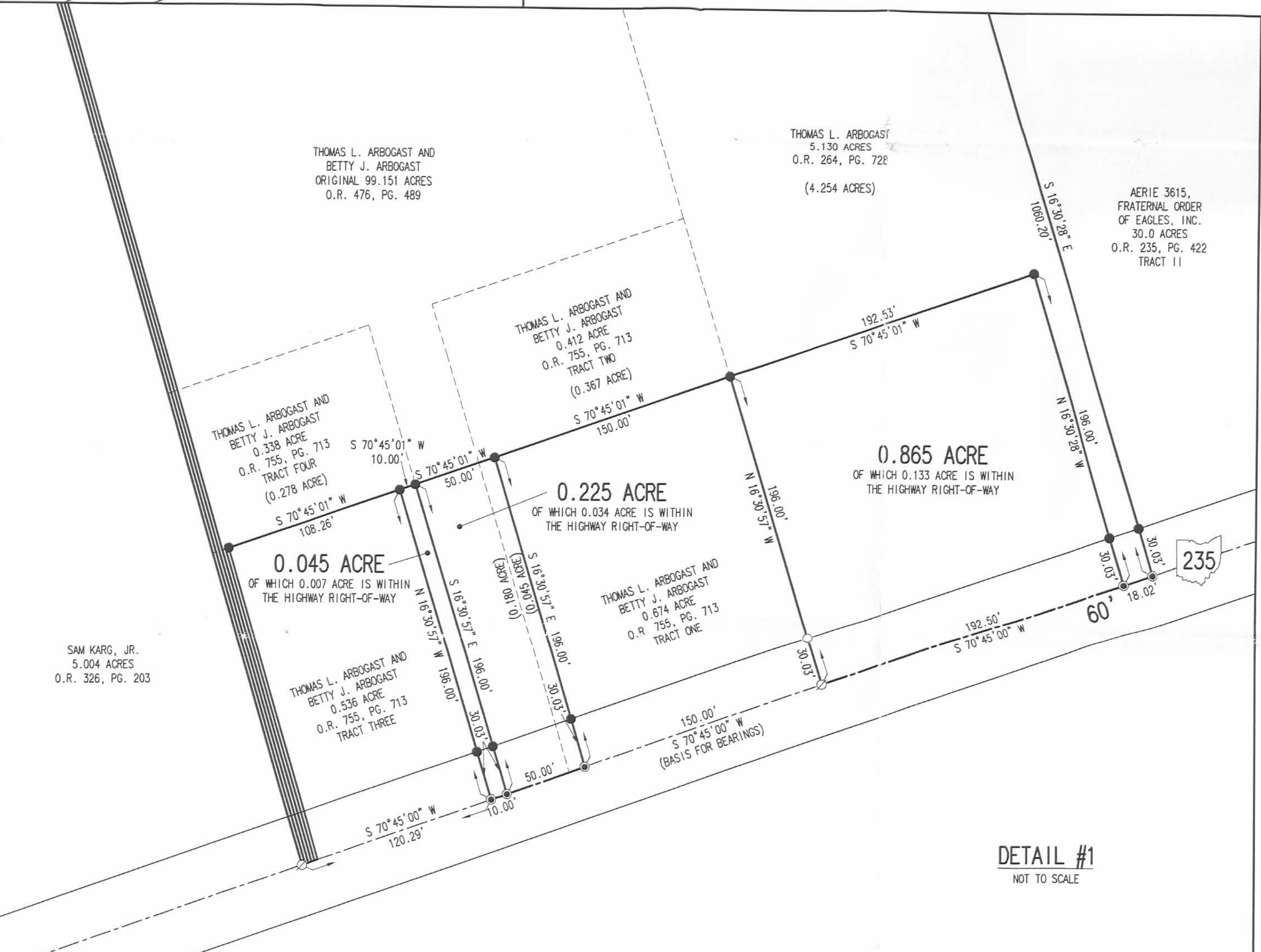
0.045 ACRE
OF WHICH 0.007 ACRE IS WITHIN
THE HIGHWAY RIGHT-OF-WAY

SAM KARG, JR.
5.004 ACRES
O.R. 326, PG. 203

THOMAS L. ARBOGAST AND
BETTY J. ARBOGAST
0.338 ACRE
O.R. 755, PG. 713
TRACT FOUR
(0.278 ACRE)

THOMAS L. ARBOGAST AND
BETTY J. ARBOGAST
0.536 ACRE
O.R. 755, PG. 713
TRACT THREE

DETAIL #1
NOT TO SCALE



SURVEY OF 0.009 ACRE OUT OF THE
THOMAS L. ARBOGAST AND
BETTY J. ARBOGAST
0.536 ACRE TRACT
OFFICIAL RECORD 755, PAGE 713, TRACT THREE,
SURVEY OF 0.045 ACRE OUT OF THE
THOMAS L. ARBOGAST AND
BETTY J. ARBOGAST
0.338 ACRE TRACT
OFFICIAL RECORD 755, PAGE 713, TRACT FOUR,
SURVEY OF 0.865 ACRE OUT OF THE
THOMAS L. ARBOGAST
ORIGINAL 5.130 ACRE TRACT
OFFICIAL RECORD 264, PAGE 728
AND
SURVEY OF FIVE TRACTS OUT OF THE
THOMAS L. ARBOGAST AND
BETTY J. ARBOGAST
ORIGINAL 99.151 ACRE TRACT
OFFICIAL RECORD 476, PAGE 489
0.412 ACRE TRACT
OFFICIAL RECORD 755, PAGE 713, TRACT TWO
0.536 ACRE TRACT
OFFICIAL RECORD 755, PAGE 713, TRACT THREE
0.338 ACRE TRACT
OFFICIAL RECORD 755, PAGE 713, TRACT FOUR
AND
THOMAS L. ARBOGAST
5.130 ACRE TRACT
OFFICIAL RECORD 264, PAGE 728
VIRGINIA MILITARY SURVEY 12276
STOKES TOWNSHIP
LOGAN COUNTY, OHIO



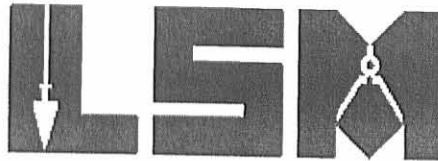
SURVEYED BY:
JEFFREY T. LEE
PROFESSIONAL SURVEYOR 6359
SEPTEMBER 12, 2006

COPYRIGHT 2004 BY:
LEE SURVEYING & MAPPING CO., INC.
117 North Woodrifer Street
BELLEFONTAINE, OHIO 43311
(937) 593-7335

REC'D 1-2-08 8M OK
Lee Surveying and Mapping Co., Inc.

Land Surveys • Topography • Subdivisions • Construction Layout

117 N. Madriver St.
Bellefontaine OH 43311



Phone: (937) 593-7335
Fax: (937) 593-7444

**ARBOGAST
0.270 ACRE**

Lying in Virginia Military Survey 12276, Stokes Township, Logan County, Ohio.

Being out of the Thomas L. Arbogast and Betty J. Arbogast original 99.151 acre tract as deeded and described in Official Record 476, Page 489, 0.412 acre tract and 0.338 acre tract as deeded and described in Official Record 755, Page 713, Tracts Two and Four of the Logan County Records of Deeds and being more particularly described as follows:

Commencing on a MAG nail found on the center-line of Ohio Route 235 at the southeast corner of the Sam Karg, Jr. 5.004 acre tract (O.R. 326, Pg. 203).

THENCE, with the center-line of Ohio Route 235 (60 feet wide), N 70°-45'-00"E, a distance of 120.29 feet to a MAG nail set at the TRUE POINT OF BEGINNING.

THENCE, with the east line of the Thomas L. Arbogast and Betty J. Arbogast 0.536 acre tract (O.R. 755, Pg. 713, Tract Three), N 16°-30'-57"W, a distance of 196.00 feet to a 5/8 inch iron rod set, passing a 5/8 inch iron rod set at 30.03 feet.

THENCE, N 70°-45'-01"E, a distance of 60.00 feet to a 5/8 inch iron rod set.

THENCE, with the west line of the Thomas L. Arbogast and Betty J. Arbogast 0.674 acre tract (O.R. 755, Pg. 713, Tract One), S 16°-30'-57"E, a distance of 196.00 feet to a MAG nail set on the center-line of Ohio Route 235, passing a 5/8 inch iron rod set at 165.97 feet.

THENCE, with the center-line of Ohio Route 235, S 70°-45'-00"W, a distance of 60.00 feet to the point of beginning.

Containing 0.270 acre, of which 0.041 acre is within the highway right-of-way.

The basis for bearings is the center-line of Ohio Route 235, being S 70°-45'-00"W, and all other bearings are from angles and distances measured in a field survey by Lee Surveying and Mapping Co., Inc. on September 12, 2006.



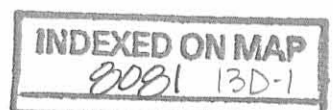
ORIGINAL GREEN

Description prepared by:

A handwritten signature in black ink that reads 'William K. Bruce'.

William K. Bruce
Professional Surveyor 7437
December 26, 2007

3061127

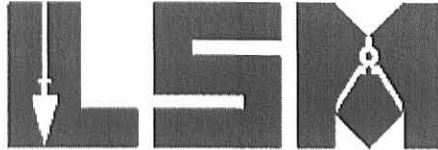


REC'D 1-23-09 SUM OR

Lee Surveying and Mapping Co., Inc.

Land Surveys • Topography • Subdivisions • Construction Layout

117 N. Madriver St.
Bellefontaine OH 43311



Phone: (937) 593-7335
Fax: (937) 593-7444

ARBOGAST 102.461 ACRES

Lying in Virginia Military Survey 12276, Stokes Township, Logan County, Ohio.

Being all of the remainder of the Thomas L. Arbogast original 5.130 acre tract as deeded and described in Official Record 264, Page 728 and part of the Thomas L. Arbogast and Betty J. Arbogast original 99.151 acre tract as deeded and described in Official Record 476, Page 489, 0.412 acre tract and 0.338 acre tract as deeded and described in Official Record 755, Page 713, Tracts Two and Four and all of the Thomas L. Arbogast and Betty J. Arbogast 0.536 acre tract as deeded and described in Official Record 755, Page 713, Tract Three of the Logan County Records of Deeds and being more particularly described as follows:

Commencing on a MAG nail found on the center-line of Ohio Route 235 at the southeast corner of the Sam Karg, Jr. 5.004 acre tract (O.R. 326, Pg. 203).

THENCE, with the lines of the said 5.004 acre tract, the following two courses:

N 15°-55'-37"W, a distance of 661.16 feet to a 5/8 inch iron rod found, passing a 5/8 inch iron rod found at 30.03 feet.

S 70°-46'-06"W, a distance of 329.95 feet to a 5/8 inch iron rod found.

THENCE, with the north line of the Janis R. Dawson 108.8 acre tract (O.R. 686, Pg. 761, Tract 2), S 69°-56'-30"W, a distance of 732.98 feet to a stone found on the west line of Virginia Military Survey 12276.

THENCE, with the west line of Virginia Military Survey 12276 and the east lines of the said 108.8 acre tract and the Janis R. Dawson 31 acre tract (O.R. 686, Pg. 761, Tract 1), N 28°-20'-56"W, a distance of 2299.01 feet to a 5/8 inch iron rod set.

THENCE, with the south line of the Charles G. Siebeneck and Carol J. Siebeneck, Trustees of the Charles G. Siebeneck Living Trust, 60 acre tract (O.R. 252, Pg. 299, Tract I), N 73°-29'-16"E, a distance of 2309.92 feet to a 5/8 inch iron rod set.

THENCE, with the west lines of the Stephen Zorn 14.640 acre tract (O.R. 896, Pg. 337) and the Daryl Stephens 14.640 acre tract (O.R. 446, Pg. 121), S 21°-02'-27"E, a distance of 537.26 feet to a 1/2 inch iron rod found.

THENCE, with the north line of the Sean M. Sprouse, 25.027 acre tract (O.R. 859, Pg. 992), S 73°-29'-02"W, a distance of 285.99 feet to a 5/8 inch iron rod set.

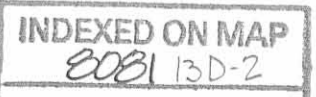
THENCE, with the east lines of the said 25.027 acre tract and the Aerie 3615, Fraternal Order of Eagles, Inc., 30.0 acre tract (O.R. 235, Pg. 422, Tract II), S 16°-30'-28"E, a distance of 2288.81 feet to a MAG nail set on the center-line of Ohio Route 235, passing a 5/8 inch iron rod found at 1228.61 feet and a 5/8 inch iron rod set at 2258.78 feet.

THENCE, with the center-line of Ohio Route 235 (60 feet wide), S 70°-45'-00"W, a distance of 18.02 feet to a MAG nail set.

THENCE, with the lines of the Jassmehak Petroleum, LLC, 0.865 acre tract (O.R. 852, Pg. 293), the following two courses:

N 16°-30'-28"W, a distance of 196.00 feet to a 5/8 inch iron rod set, passing a 5/8 inch iron rod set at 30.03 feet.

S 70°-45'-01"W, a distance of 192.53 feet to a 5/8 inch iron rod set.



Lee Surveying and Mapping Co., Inc.

Land Surveys • Topography • Subdivisions • Construction Layout

117 N. Madriver St.
Bellefontaine OH 43311



Phone: (937) 593-7335
Fax: (937) 593-7444

THENCE, with the north line of the Thomas L. Arbogast and Betty J. Arbogast 0.674 acre tract (O.R. 755, Pg. 713, Tract One), S 70°-45'-01"W, a distance of 150.00 feet to a 5/8 inch iron rod set.

THENCE, S 70°-45'-01"W, a distance of 60.00 feet to a 5/8 inch iron rod set.

THENCE, with a west line of the said 0.338 acre tract, S 16°-30'-57"E, a distance of 196.00 feet to a MAG nail set on the center-line of Ohio Route 235, passing a 5/8 inch iron rod set at 165.97 feet.

THENCE, with the center-line of Ohio Route 235, S 70°-45'-00"W, a distance of 120.29 feet to the point of beginning.

Containing 102.461 acres, of which 0.095 acre is within the highway right-of-way.

The basis for bearings is the center-line of Ohio Route 235, being S 70°-45'-00"W, and all other bearings are from angles and distances measured in a field survey by Lee Surveying and Mapping Co., Inc. on September 12, 2006.



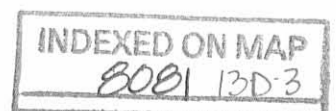
ORIGINAL STAMP IN GREEN

Description prepared by:

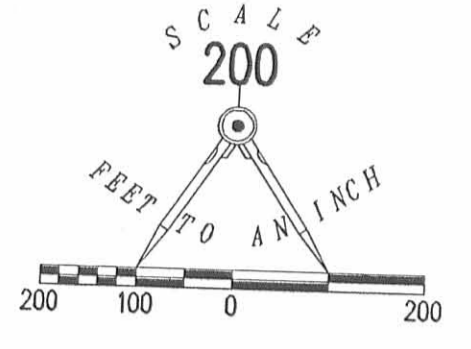
A handwritten signature in black ink that reads 'William K. Bruce'.

William K. Bruce
Professional Surveyor 7437
January 22, 2008

3061018



- LEGEND:
- MAG NAIL FOUND
 - MAG NAIL SET
 - 5/8 INCH IRON ROD SET
 - 5/8 INCH IRON ROD FOUND
 - 1/2 INCH IRON ROD FOUND
 - ☒ STONE FOUND



TOWNSHIP ROAD 224

CHARLES G. SIEBENECK
AND CAROL J. SIEBENECK,
TRUSTEES OF THE
CHARLES G. SIEBENECK LIVING TRUST
60 ACRES
O.R. 252, PG. 299
TRACT I

STEPHEN ZORN
14.640 ACRES
O.R. 896, PG. 337

DARYL STEPHENS
14.640 ACRES
O.R. 446, PG. 121

SEAN M. SPROUSE
25.027 ACRES
O.R. 859, PG. 992

JANIS R. DAWSON
31 ACRES
O.R. 686, PG. 761
TRACT 1

102.461 ACRES
OF WHICH 0.095 ACRE IS WITHIN
THE HIGHWAY RIGHT-OF-WAY

THOMAS L. ARBOGAST AND
BETTY J. ARBOGAST
ORIGINAL 99.151 ACRES
O.R. 476, PG. 489

(97.011 ACRES)

AERIE 3615,
FRATERNAL ORDER
OF EAGLES, INC.
30.0 ACRES
O.R. 235, PG. 422
TRACT II

SURVEY OF 0.270 ACRE OUT OF THE
THOMAS L. ARBOGAST AND
BETTY J. ARBOGAST
ORIGINAL 99.151 ACRE TRACT
OFFICIAL RECORD 476, PAGE 489
0.412 ACRE TRACT
OFFICIAL RECORD 755, PAGE 713, TRACT TWO
0.338 ACRE TRACT
OFFICIAL RECORD 755, PAGE 713, TRACT FOUR,
AND SURVEY OF 102.461 ACRES OUT OF THE
THOMAS L. ARBOGAST
ORIGINAL 5.130 ACRE TRACT
OFFICIAL RECORD 264, PAGE 728
A N D
THOMAS L. ARBOGAST AND
BETTY J. ARBOGAST
ORIGINAL 99.151 ACRE TRACT
OFFICIAL RECORD 476, PAGE 489
0.412 ACRE TRACT
OFFICIAL RECORD 755, PAGE 713, TRACT TWO
0.536 ACRE TRACT
OFFICIAL RECORD 755, PAGE 713, TRACT THREE
0.338 ACRE TRACT
OFFICIAL RECORD 755, PAGE 713, TRACT FOUR
VIRGINIA MILITARY SURVEY 12276
STOKES TOWNSHIP
LOGAN COUNTY, OHIO

VIRGINIA MILITARY SURVEY 12276
SECTION 14, TOWN 6, RANGE 8

JANIS R. DAWSON
108.8 ACRES
O.R. 686, PG. 761
TRACT 2

JANIS R. DAWSON
108.8 ACRES
O.R. 686, PG. 761
TRACT 2

SAM KARG, JR.
5.004 ACRES
O.R. 326, PG. 203

THOMAS L. ARBOGAST
5.130 ACRES
O.R. 264, PG. 728
TRACT II

THOMAS L. ARBOGAST AND
BETTY J. ARBOGAST
ORIGINAL 99.151 ACRES
O.R. 476, PG. 489

(97.011 ACRES)

THOMAS L. ARBOGAST
5.130 ACRES
O.R. 264, PG. 728
(4.254 ACRES)

THOMAS L. ARBOGAST AND
BETTY J. ARBOGAST
O.R. 755, PG. 713
TRACT TWO
(0.367 ACRE)

THOMAS L. ARBOGAST
AND BETTY J. ARBOGAST
O.R. 755, PG. 713
TRACT ONE

THOMAS L. ARBOGAST
AND BETTY J. ARBOGAST
O.R. 755, PG. 713
TRACT FOUR
(0.293 ACRE)

SAM KARG, JR.
5.004 ACRES
O.R. 326, PG. 203

THOMAS L. ARBOGAST
AND BETTY J. ARBOGAST
O.R. 755, PG. 713
TRACT THREE
(0.536 ACRE)

JASMEHAK PETROLEUM, LLC
0.865 ACRE
O.R. 852, PG. 293

DETAIL
NOT TO SCALE

DETAIL
NOT TO SCALE



SURVEYED BY:
William K. Bruce
WILLIAM K. BRUCE
PROFESSIONAL SURVEYOR 7437
SEPTEMBER 12, 2006

COPYRIGHT 2008 BY:
LEE SURVEYING & MAPPING CO., INC.
117 North Modriver Street
BELLEFONTAINE, OHIO 43311
(937) 593-7335

INDEXED ON MAP
8001 13P

Lee Surveying and Mapping Co., Inc.



APPROVED

11-14-12

117 N. Madriver St.
Bellefontaine OH 43311

Land Surveys • Topography • Subdivisions • Construction Layout



Phone: (937) 593-7335
Fax: (937) 593-7444
surveys@lsmcinc.us

ARBOGAST 75.631 ACRES

Lying in Virginia Military Survey 12276, Stokes Township, Logan County, Ohio.

Being out of the Thomas L. Arbogast and Betty J. Arbogast 102.461 acre tract as deeded and described in Official Record 924, Page 294 of the Logan County Records of Deeds and being more particularly described as follows:

Commencing at a 5/8 iron rod found at the intersection of the center-line of Township Road 224 and west line of Virginia Military Survey 12276 (Roberts Line).

THENCE, with the west line of Virginia Military Survey 12276, S 28°-19'-52"E, a distance of 3110.16 feet to a 5/8 inch iron rod found at the TRUE POINT OF BEGINNING.

THENCE, with the south line of the Charles G. Siebeneck and Carol J. Siebeneck Trustees of the Charles G. Siebeneck Living Trust 60 acre tract (O.R. 252, Pg. 299, Tract I), N 73°-29'-16"E, a distance of 1723.42 feet to a point, referenced by a 1/2 inch iron rod found that bears N 16°-22'-37"W, a distance of 1.21 feet.

THENCE, S 16°-22'-39"E, a distance of 2172.87 feet to a 5/8 inch iron rod set.

THENCE, S 68°-28'-33"W, a distance of 186.29 feet to a 5/8 inch rod found.

THENCE, with the north line of the Sam Karg, Jr. 5.004 acre tract (O.R. 326, Pg. 203), S 70°-46'-06"W, a distance of 329.95 feet to a 5/8 inch iron rod found.

THENCE, with a north line of the Janis R. Dawson 108.8 acre tract (O.R. 686, Pg. 761, Tract 2) , S 69°-56'-30"W, a distance of 732.98 feet to a stone found.

THENCE, with an east line of said 108.8 acre tract and the east line of the Janis R. Dawson 31 acre tract (O.R. 686, Pg. 761, Tract 1), and the west line of Virginia Military Survey 12276, N 28°-20'-56"W, a distance of 2299.01 feet to the point of beginning.

Containing 75.631 acres.

This parcel is to be attached to an adjoining tract of land and is not to be used as a separate and independent parcel.

Property is subject to any and all previous easements and rights-of-way of record.

The basis for bearings is the Roberts Line, being N 28°-20'-56"W, and all other bearings are from angles and distances measured in a field survey by Lee Surveying and Mapping Co., Inc. on November 8, 2012

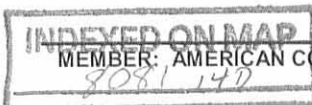


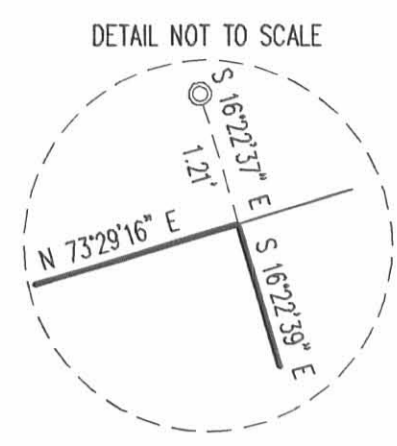
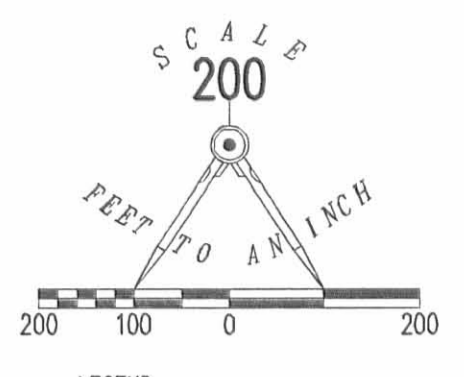
Description prepared by:

William K. Bruce

William K. Bruce
Professional Surveyor 7437
November 12, 2012

L-3061





- LEGEND:
- 5/8 INCH IRON ROD SET
 - 5/8 INCH IRON ROD FOUND
 - ⊙ 1/2 INCH IRON ROD FOUND
 - ⊠ STONE FOUND

**SURVEY OF A 75.631 ACRE TRACT OUT OF THE
THOMAS L. ARBOGAST AND
BETTY J. ARBOGAST
102.461 ACRE TRACT
OFFICIAL RECORD 924, PAGE 294
VIRGINIA MILITARY SURVEY 12276
STOKES TOWNSHIP
LOGAN COUNTY, OHIO**

CHARLES G. SIEBENECK
AND CAROL J. SIEBENECK,
TRUSTEES OF THE
CHARLES G. SIEBENECK LIVING TRUST
60 ACRES
O.R. 252, PG. 299
TRACT 1

SEE DETAIL

TOWNSHIP ROAD 224

N 73°29'16" E
1723.42'

S 26°19'52" E
3110.16'

ROBERTS LINE
CONGRESS LANDS

JANIS R. DAWSON
31 ACRES
O.R. 686, PG. 761
TRACT 1

75.631 ACRES

N 26°10'56" W
2298.01'
BASIS FOR BEARINGS

VIRGINIA MILITARY SURVEY 12276
SECTION 14, TOWN 6, RANGE 8

JANIS R. DAWSON
108.8 ACRES
O.R. 686, PG. 761
TRACT 2

S 16°21'39" E
2172.87'

732.98'
S 69°56'30" W

JANIS R. DAWSON
108.8 ACRES
O.R. 686, PG. 761
TRACT 2

329.95'
S 70°46'06" W

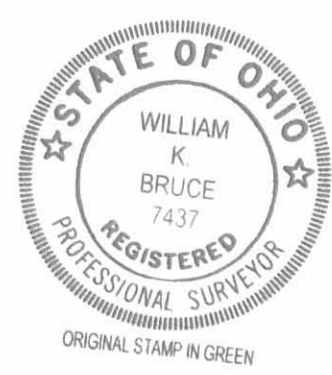
SAM KARG, JR.
5.004 ACRES
O.R. 326, PG. 203

186.29'
S 68°28'33" W

THOMAS L. ARBOGAST AND
BETTY J. ARBOGAST
102.461 ACRES
O.R. 924, PG. 294

NOTE:
THIS PARCEL IS TO BE ATTACHED TO AN ADJOINING TRACT
OF LAND AND IS NOT TO BE USED AS A SEPARATE AND
INDEPENDENT PARCEL.

2 WORKING DAYS
BEFORE YOU DIG
CALL TOLL FREE **800-362-2764**
OHIO UTILITIES PROTECTION SERVICE



SURVEYED BY:
William K. Bruce
WILLIAM K. BRUCE
PROFESSIONAL SURVEYOR 7437
NOVEMBER 8, 2012

COPYRIGHT 2012 BY:
LEE SURVEYING & MAPPING CO.
117 North Madriver Street, INC.
BELLEFONTAINE, OHIO 43311
(937) 593-7335
WWW.LSMINC.US
surveys@lsminc.us
ADW D1012 30611012 L-3061-2

INDEXED ON MAP
8081 14P

4-15-19



Lee Lauck
Page 2 of 2
April 02, 2019

LEGAL DESCRIPTION

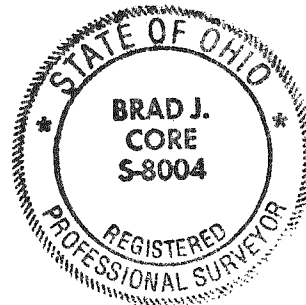
Being part of a 75.631 acre parcel, owned by Charles Rodney & Haley Siebeneck as deeded and described in O.R. 1093, Page 519, located the Virginia Military Survey #12276, Stokes Township, Logan County, Ohio, more particularly described as followed:

Commencing at an existing $\frac{5}{8}$ " Iron Rod at the intersection of the centerline of Township Road 224 & the West line of V.M.S. #12276; thence S $18^{\circ}-44'-55''$ E on the West line of V.M.S. #12276, 3110.16' to an existing #5 Rebar; thence S $18^{\circ}-45'-59''$ E on the West line of V.M.S. #12276, 2299.01' to an existing Stone at a Northwest corner of the Janis R. Dawson & Andrew Reinhart Property as described in O.R. 1093, Pg. 519 (68.978 Ac. per deed); thence N $79^{\circ}-28'-55''$ E on a North line of said Dawson & Reinhart Property, 488.20' to a #5 Rebar set at the POINT OF BEGINNING; thence the following courses:

1. N $06^{\circ}-47'-42''$ W, 400.00' to a set #5 Rebar;
2. N $79^{\circ}-33'-03''$ E, 760.93' to a #5 Rebar set on the West line of the Thomas L. & Betty J. Arbogast Property as described in O.R. 924, Pg. 294 (102.461 Ac. per deed);
3. S $06^{\circ}-47'-42''$ E on the West line of said Arbogast Property, 400.00' to an existing #5 Rebar at the Southeast corner of the Siebeneck Property;
4. S $78^{\circ}-03'-30''$ W on a North line of the Arbogast Property, 186.29' to a #5 Rebar set at the Northeast corner of the C & L Homes, LLC Property as described in O.R. 1248, Pg. 1 (5.004 Ac. per deed);
5. S $80^{\circ}-26'-41''$ W on the North line of said C & L Homes, LLC Property, 329.94' to an existing #5 Rebar at a Northeast corner of the Dawson & Reinhart Property;
6. S $79^{\circ}-28'-55''$ W on a North line of said Dawson & Reinhart Property, 244.80' to the POINT OF BEGINNING.

The above-described parcel of land contains 7.000 acres, more or less, of which 0.000 acres are occupied by road right-of-way. This parcel is subject to all legal highways and easements of record.

The bearings for this survey are based on the Ohio State Plane North Coordinate System. This legal description and the accompanying plat represent an actual boundary survey conducted under the direct supervision of Brad J. Core #8004 on April 02, 2019. All markers called for above are in place.

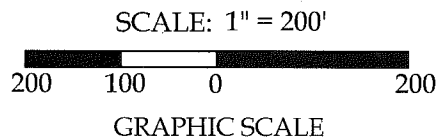


4-15-19

APPROVED

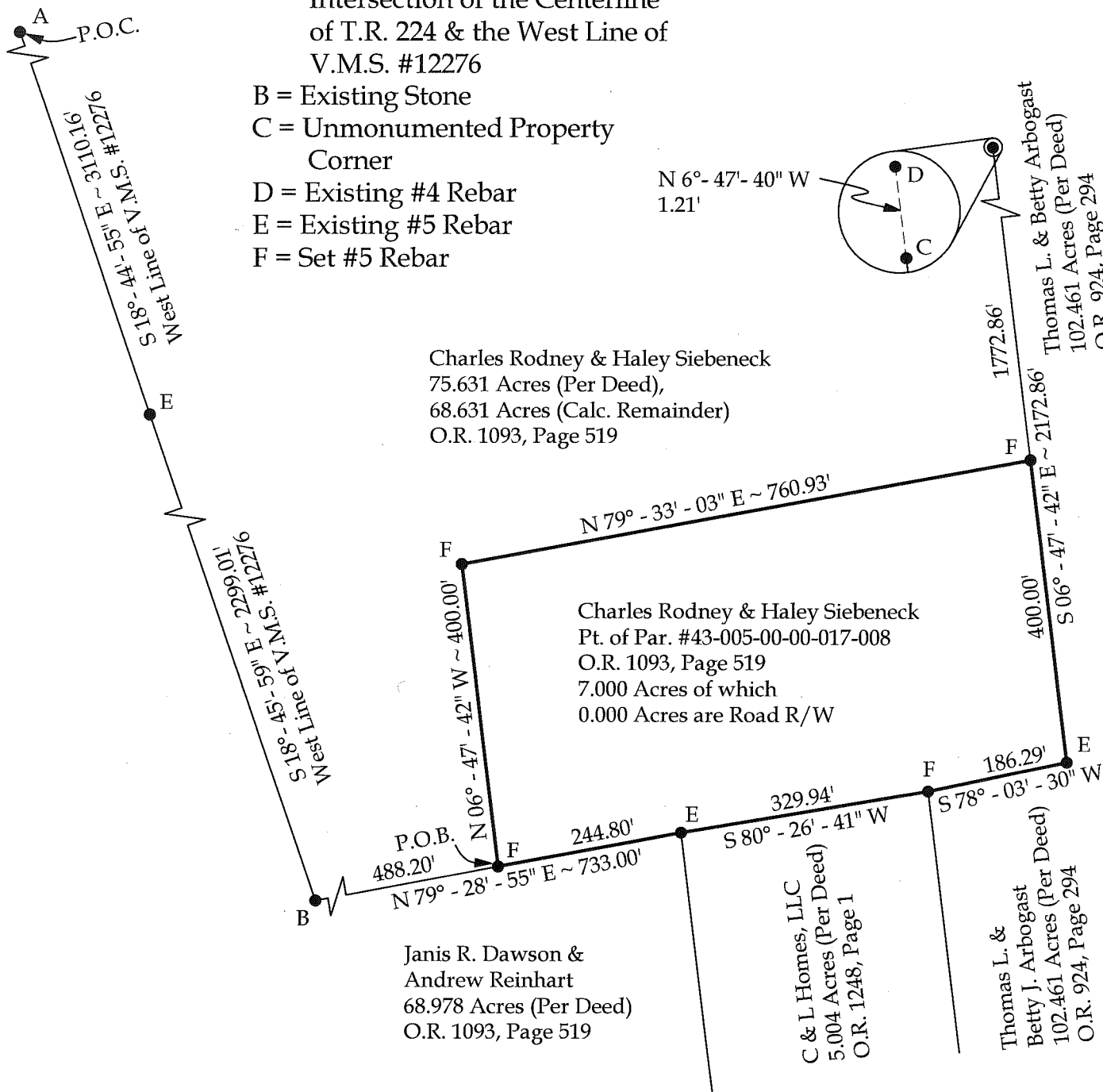
Boundary Survey of Part of Parcel #43-005-00-00-017-008,
located in the Virginia Military Survey #12276, Stokes
Township, Logan County, Ohio.

Prior Deed Referenced in O.R. 1093, Page 519



Legend

- A = Existing $\frac{5}{8}$ " Iron Rod at the Intersection of the Centerline of T.R. 224 & the West Line of V.M.S. #12276
- B = Existing Stone
- C = Unmonumented Property Corner
- D = Existing #4 Rebar
- E = Existing #5 Rebar
- F = Set #5 Rebar



Note:
All distances shown
are measured unless
otherwise noted.

Basis of Bearings:
The Ohio State Plane
North Coordinate
System.

This plat and the accompanying legal
description represent an actual boundary
survey completed under my direct
supervision on April 02, 2019.

Brad J. Core
Brad J. Core, P.S. #8004

CORE CONSULTING
A Division of Materials Testing, Inc.

1660 S. Defiance Trail
Spencerville, OH 45887
Phone/Fax: 419-647-6163

CLIENT: Lee Lauck

SURVEYED BY: P.J.M.	DATE: 4-02-2019	DRAWN BY: P.J.M.	CHECKED BY: B.J.C.
SCALE: 1" = 200'		PAGE OF PAGES 1 2	

INDEXED ON MAP
0001

5-13-2020



**DESCRIPTION OF SURVEY FOR
CHARLES RODNEY SIEBENECK
1.000 ACRE
May 11, 2020**

The following described 1.000 acre tract of land is situated in Virginia Military Survey 12276, Stokes Township, Logan County, Ohio and being part of Charles Rodney Siebeneck's and Haley Siebeneck's original 75.631 acre tract described in Official Record Volume 1093, page 519, said 1.000 acre tract more particularly described as follows:

Beginning for reference at a magnetic nail found at the intersection of the centerline of State Route 235 (60 feet wide) with the west line of V.M.S. 12276 and the east line of fractional Section 14, Town 6, Range 8, Congress Lands, said nail also in the south line of Janis R. Dawson's and Andrew Reinhart's 68.978 acre tract described in Official Record Volume 1317, page 650;

Thence North 16°06'17" West 653.86 feet, departing from the centerline of State Route 235, following the west line of V.M.S. 12276 and the east line of fractional Section 14 and crossing said 68.978 acre tract, to a stone found at the southwest corner of said original 75.631 acre tract;

Thence North 79°32'33" East 379.11 feet, departing from the east line of fractional Section 14, entering V.M.S. 12276, following the south line of said original 75.631 acre tract and a north line of said 68.978 acre tract, to an iron bar set and marking the **place of beginning**;

Thence **North 6°47'17" West 400.11 feet**, departing from the north line of said 68.978 acre tract and entering said original 75.631 acre tract, to an iron bar set;

Thence **North 79°32'51" East 109.10 feet** to a 5/8 inch iron bar found at the northwest corner of C and L Homes, LLC's 7.000 acre tract described in Official Record Volume 1344, page 652, said 7.000 acre tract formerly part of said original 75.631 acre tract;

Thence **South 6°47'17" East 400.10 feet**, following the west line of said 7.000 acre tract and the east line of the remainder of said original 75.631 acre tract, to a 5/8 inch iron bar found in the north line of said 68.978 acre tract;

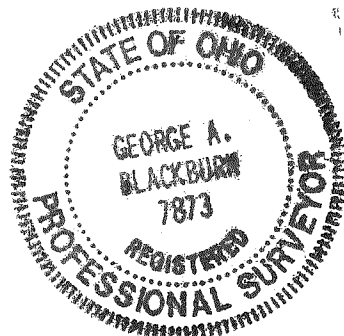
Thence **South 79°32'33" West 109.10 feet**, following the north line of said 68.978 acre tract and the south line of said original 75.631 acre tract, to the **place of beginning, containing 1.000 acres** more or less and subject to all valid easements and restrictions of record.

The 1.000 acre tract of land described herein is to be attached to an adjoining parcel and may not be used as a separate or independent tract.

The above description was prepared from an actual field survey made by George A. Blackburn, Registered Surveyor #7873, during the month of May 2020. Iron bars set are 5/8 inch by 30 inch reinforcing rods with plastic caps marked "Blackburn RS #7873." Bearings indicated hereon are based on the west line of V.M.S. 12276 bearing North 16°06'17" West.

Description prepared by: George A. Blackburn 5-11-2020

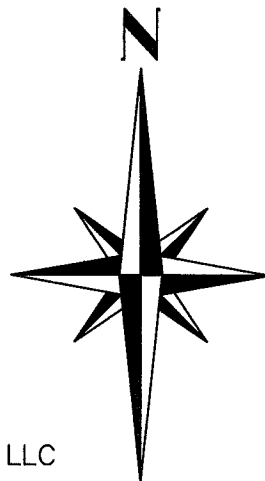
George A. Blackburn, R.S. #7873
6879 State Route 287
West Liberty, Ohio 43357
(937) 465-0424



5-13-2020

APPROVED

PLAT OF SURVEY IN V.M.S. 12276, STOKES TOWNSHIP LOGAN COUNTY, OHIO

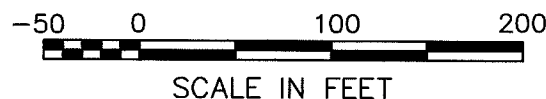


1.000 ACRES

Part of Charles Rodney Siebeneck's
and Haley Siebeneck's
orig. 75.631 acre tract.

CHARLES RODNEY SIEBENECK
AND HALEY SIEBENECK
ORIGINAL 75.631 ACRES
O.R. 1093, PG. 519

C AND L HOMES, LLC
7.000 ACRES
O.R. 1344, PG. 652



ROBERTS LINE
CONGRESS LANDS

FRACTIONAL
VIRGINIA MILITARY SURVEY 12276
SECTION 14, TOWN 6, RANGE 8

(BASIS OF BEARING)
N16°06'17"W
653.86'

PLACE OF BEGINNING

N79°32'33"E
379.11'

JANIS R. DAWSON AND ANDREW REINHART
68.978 ACRES
O.R. 1317, PG. 650

109.10'
S79°32'33"W

S79°27'45"W
244.73'

LEGEND

- Magnetic nail found
- 5/8" Iron bar found
- 5/8" Iron bar set
- △ Stone found

NOTE:

The 1.000 acre tract shown
hereon is to be attached to
an adjoining parcel and may
not be used as a separate
or independent tract.

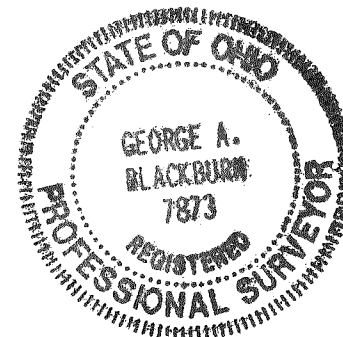
I HEREBY CERTIFY THAT THIS PLAT WAS PREPARED FROM AN
ACTUAL FIELD SURVEY AND THAT MONUMENTS WERE
PLACED AS INDICATED HEREON.

George A. Blackburn 5-11-2020
GEORGE A. BLACKBURN, R.S. 7873

STATE ROUTE 235 (60')

REFERENCE BEGINNING

118.94'
N70°10'44"E



BLACKBURN SURVEYING
6879 STATE ROUTE 287
WEST LIBERTY, OHIO 43357
(937) 465-0424

DATE: 5/11/2020
SCALE: 1" = 100'
FILE: Rodney Siebeneck 5-20

PLAT PREPARED FOR
CHARLES RODNEY SIEBENECK

Sheet
1
of
1

INDEXED ON MAP
3081

12-15-2022



APPROVED



**Description
for
0.396 Acres**

- Situated in the Virginia Military Survey 12276, Stokes Township, Logan County, Ohio, being part of a 102.461 acre tract heretofore conveyed to Thomas L. and Betty J. Arbogast as described in Official Record Volume 924, Page 294, and being more particularly described as follows;
- Commencing at the intersection of the centerline of State Route 235 with the centerline of Township Road 93, being a mag nail found;
- Thence along the centerline of State Route 235 (60' R/W), S.80°20'40"W., a distance of 1866.00 feet to a mag nail found at the southwest corner of a 0.674 acre tract as conveyed to Thomas L. and Betty J. Arbogast as described in Official Record Volume 755, Page 713 (Tract 1);
- Thence along the west line of said tract, N.06°55'17"W., a distance of 196.00 feet to a 5/8" iron pin found at the northwest corner of said 0.674 acre tract, being the *Principal Point of Beginning*;
- Thence on a new division line on the following three (3) courses and distances:
 1. N.06°55'17"W., a distance of 115.00 feet to a 5/8" iron pin set;
 2. N.80°20'41"E., a distance of 150.00 feet to a 5/8" iron pin set;
 3. S.06°55'17"E., a distance of 115.00 feet to a 5/8" iron pin found at the northeast corner of said 0.647 acre tract;
- Thence along the north line of said tract, S.80°20'41"W., a distance of 150.00 feet to the *Point of Beginning*;
- Containing 0.396 acre, more or less, with 0.000 acre in the road right-of-way and being subject to all legal highways, rights-of-way, easements, restrictions, covenants, and/or conditions of record.

North and bearing system based on Ohio North State Plane Grid, NAD 83, ADJ. 2011.
The above description and bearing system is based on a survey prepared by Michael L. Howbert, Registered Professional Surveyor, No. 7959, in December of 2022.

Michael L. Howbert, P.S.
12-15-22

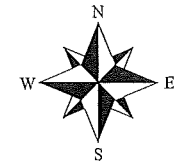


INDEXED ON MAP
8081

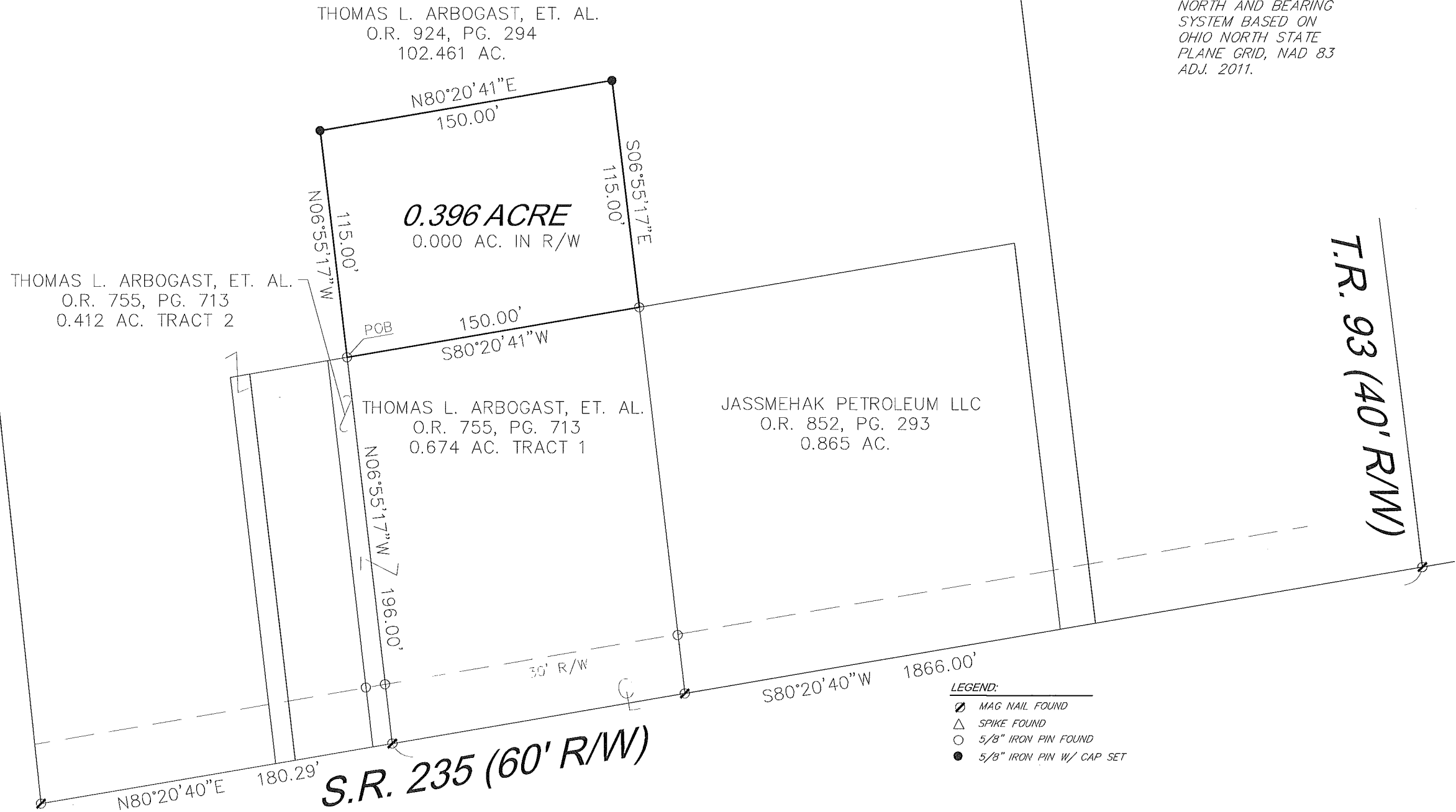
PLAT OF SURVEY
FOR
C. ARBOGAST

SITUATED IN:
VIRGINIA MILITARY SURVEY 12276
STOKES TOWNSHIP,
LOGAN COUNTY, OHIO

12-15-2022
APPROVED



NORTH AND BEARING
SYSTEM BASED ON
OHIO NORTH STATE
PLANE GRID, NAD 83
ADJ. 2011.

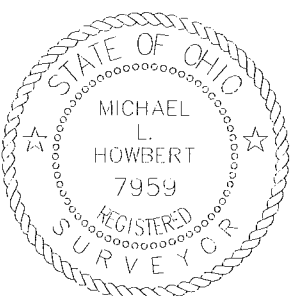


HOWBERT SURVEYING LLC
8477 MERICLE ROAD
FORT JENNINGS, OHIO 45844
419-863-0289

DATE: 12/14/22	REV.:
CLIENT: C. ARBOGAST	SCALE: 1" = 60'
JOB #: 1018-12-22	CHK:

THIS PLAT IS BASED ON AN ACTUAL FIELD SURVEY.

Michael L. Howbert
MICHAEL L. HOWBERT 12-15-22
REGISTERED PROFESSIONAL
SURVEYOR NO. 7959 IN OHIO
DECEMBER 14, 2022



NOTES:
FOUND MONUMENTATION IN GOOD CONDITION
UNLESS OTHERWISE NOTED.
DATA SOURCES INCLUDE DOCUMENTS CITED.
A TITLE SEARCH IS RECOMMENDED TO DETERMINE
EASEMENTS, RESTRICTIONS, AND/OR OTHER
ENCUMBRANCES AFFECTING THE PROPERTY
SHOWN HEREON.

INDEXED ON MAP
8081

SCALE 1"=60'

3-30-2023

APPROVED



EDWARDS SURVEYING

110 South Main Street
Urbana, Ohio 43078
(937) 653-6508



LEGAL DESCRIPTION FOR ARBOGAST'S 1.207 ACRE TRACT

Being situate in the State of Ohio, County of Logan, Township of Stokes, and being a part of Virginia Military Survey 12276, and being more particularly described as follows:

Beginning for reference at a Mag Nail found at the intersection of the centerlines of Township Road 93 (60' right-of-way) and State Route 235 (60' right-of-way);

Thence with the centerline of State Route 235, S-80°21'07"-W, 2080.85'(feet) to a Mag Nail set at the **PRINCIPLE PLACE OF BEGINNING** for the tract hereinafter described, passing for reference a Mag Nail found at a Southeast corner of an original 102.461 acre tract conveyed to Thomas L. & Betty J. Arbogast by deed recorded in Official Record 924, Page 294, also being at a Southwest corner of an original 0.338 acre tract conveyed to Thomas L. & Betty J. Arbogast by deed recorded in Official Record 755, Page 713, Tract Four, and being at the Southwest corner of a 0.270 acre tract of record by Land Contract to Brian M. & Jennifer R. Ramsey per Official Record 1384, Page 111, at 2075.85'(feet);

Thence continuing with the centerline of State Route 235, S-80°21'07"-W, 5.00'(feet) to a Mag Nail set;

Thence N-6°56'02"-W, 196.00'(feet) to an iron bar set, passing for reference an iron bar set on the right-of-way line of State Route 235 at 30.03'(feet);

Thence S-80°21'07"-W, 108.21'(feet) to an iron bar set on the East line of a 5.004 acre tract conveyed to C and L Homes, LLC, by deed recorded in Official Record 1248, Page 1;

Thence with the East line of the 5.004 acre tract, N-6°19'32"-W, 464.41'(feet) to a 5/8" diameter iron bar found on the South line of a 7.000 acre tract conveyed to C and L Homes, LLC, by deed recorded in Official Record 1344, Page 652;

Thence with the South line of the 7.000 acre tract, N-78°01'58"-E, 108.57'(feet) to an iron bar set;


Thence S-6°56'02"-E, 664.55'(feet) to the place of beginning, passing for reference an iron bar set on the right-of-way line of State Route 235 at 634.52'(feet);

Containing 1.207 acre, 0.003 acre of which is within the Road right-of-way, but being subject to the rights of all legal highways and all easements of record.

Being a part of an original 102.461 acre tract conveyed to Thomas L. and Betty J. Arbogast by deed recorded in Official Record 924, Page 294, of the Logan County Records.

The foregoing description prepared by and in accordance with a survey by William D. Edwards, Professional Surveyor No. 7574, March 21, 2023. All iron bars set are 5/8"x30" iron re-bar with a yellow plastic cap stamped "EDWARDS PS 7574". Bearings for the herein described tract are based on the centerline of State Route 235 per an assumed bearing of S-80°21'07"-W.




William D. Edwards, P.S. 7574

INDEXED ON MAP
8081

3-30-2023

APPROVED



EDWARDS SURVEYING

110 South Main Street
Urbana, Ohio 43078
(937) 653-6508



LEGAL DESCRIPTION FOR ARBOGAST'S 0.491 ACRE TRACT

Being situate in the State of Ohio, County of Logan, Township of Stokes, and being a part of Virginia Military Survey 12276, and being more particularly described as follows:

Beginning for reference at a Mag Nail found at the intersection of the centerlines of Township Road 93 (60' right-of-way) and State Route 235 (60' right-of-way);

Thence with the centerline of State Route 235, S-80°21'07"-W, 2085.85'(feet) to a Mag Nail set at the **PRINCIPLE PLACE OF BEGINNING** for the tract hereinafter described, passing for reference a Mag Nail found at a Southeast corner of an original 102.461 acre tract conveyed to Thomas L. & Betty J. Arbogast by deed recorded in Official Record 924, Page 294, also being at a Southwest corner of an original 0.338 acre tract conveyed to Thomas L. & Betty J. Arbogast by deed recorded in Official Record 755, Page 713, Tract Four, and being at the Southwest corner of a 0.270 acre tract of record by Land Contract to Brian M. & Jennifer R. Ramsey per Official Record 1384, Page 111, at 2075.85'(feet), and a Mag Nail set at 2080.85'(feet);

Thence continuing with the centerline of State route 235, S-80°21'07"-W, 110.29'(feet) to a Mag Nail found at the Southeast corner of a 5.004 acre tract conveyed to C and L Homes, LLC, by deed recorded in Official Record 1248, Page 1;

Thence with the East line of the 5.004 acre tract, N-6°19'32"-W, 196.11'(feet) to an iron bar set, passing for reference an iron bar set on the right-of-way line of State Route 235, replacing a disturbed 5/8" diameter iron bar found, at 30.05'(feet);

Thence N-80°21'07"-E, 108.21'(feet) to an iron bar set;

Thence S-6°56'02"-E, 196.00'(feet) to the place of beginning, passing for reference an iron bar set on the right-of-way line of State Route 235 at 165.97'(feet);

Containing 0.491 acre, 0.076 acre of which is within the Road right-of-way, but being subject to the rights of all legal highways and all easements of record.

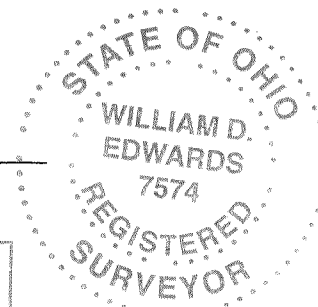
Being a part of an original 102.461 acre tract conveyed to Thomas L. and Betty J. Arbogast by deed recorded in Official Record 924, Page 294, of the Logan County Records.

The foregoing description prepared by and in accordance with a survey by William D. Edwards, Professional Surveyor No. 7574, March 21, 2023. All iron bars set are 5/8"x30" iron re-bar with a yellow plastic cap stamped "EDWARDS PS 7574". Bearings for the herein described tract are based on the centerline of State Route 235 per an assumed bearing of S-80°21'07"-W.

William D. Edwards

William D. Edwards, P.S. 7574

INDEXED ON MAP
8081



3-20-2023

APPROVED



EDWARDS SURVEYING
110 South Main Street
Urbana, Ohio 43078
(937) 653-6508



LEGAL DESCRIPTION – ARBOGAST – EASEMENT

Being situate in the State of Ohio, County of Logan, Township of Stokes, and being a part of Virginia Military Survey 12276, and being an easement for ingress and egress, the centerline of the easement being more particularly described as follows:

Beginning for reference at a Mag Nail found at the intersection of the centerlines of Township Road 93 (60' right-of-way) and State Route 235 (60' right-of-way);

Thence with the centerline of State Route 235, S-80°21'07"-W, 2080.85'(feet) to a Mag Nail set at the **PRINCIPLE PLACE OF BEGINNING** for the easement centerline hereinafter described, passing for reference a Mag Nail found at a Southeast corner of an original 102.461 acre tract conveyed to Thomas L. & Betty J. Arbogast by deed recorded in Official Record 924, Page 294, also being at a Southwest corner of an original 0.338 acre tract conveyed to Thomas L. & Betty J. Arbogast by deed recorded in Official Record 755, Page 713, Tract Four, and being at the Southwest corner of a 0.270 acre tract of record by Land Contract to Brian M. & Jennifer R. Ramsey per Official Record 1384, Page 111, at 2075.85'(feet);

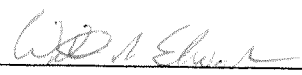
Thence N-6°56'02"-W, 664.55'(feet) to an iron bar set on the South line of a 7.000 acre tract conveyed to C and L Homes, LLC, by deed recorded in Official Record 1344, Page 652, at the North terminus of the 10' wide easement, passing for reference an iron bar set on the right-of-way line of State Route 235 at 30.03'(feet);

Containing 0.152 acre, 0.007 acre of which is within the Road right-of-way, but being subject to the rights of all legal highways and all easements of record.

Being a part of an original 102.461 acre tract conveyed to Thomas L. and Betty J. Arbogast by deed recorded in Official Record 924, Page 294, of the Logan County Records.

The foregoing description prepared by and in accordance with a survey by William D. Edwards, Professional Surveyor No. 7574, March 21, 2023. All iron bars set are 5/8"x30" iron re-bar with a yellow plastic cap stamped "EDWARDS PS 7574". Bearings for the herein described tract are based on the centerline of State Route 235 per an assumed bearing of S-80°21'07"-W.





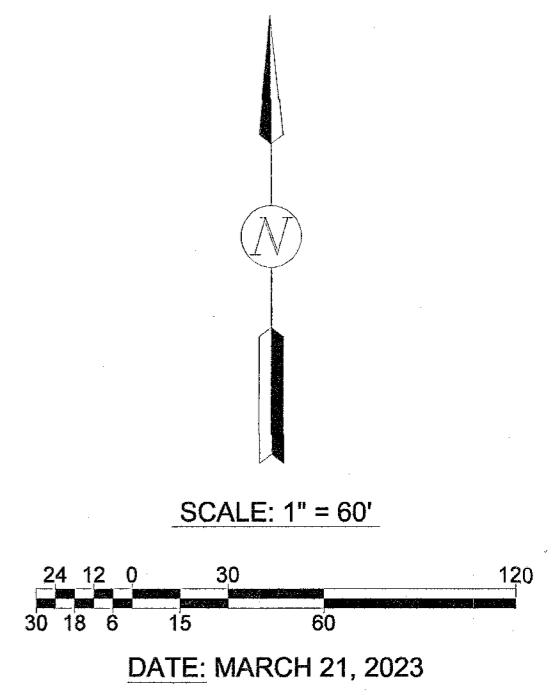
William D. Edwards, P.S. 7574

PLAT OF SURVEY

STOKES TOWNSHIP, LOGAN COUNTY, OHIO
 VIRGINIA MILITARY SURVEY 12276

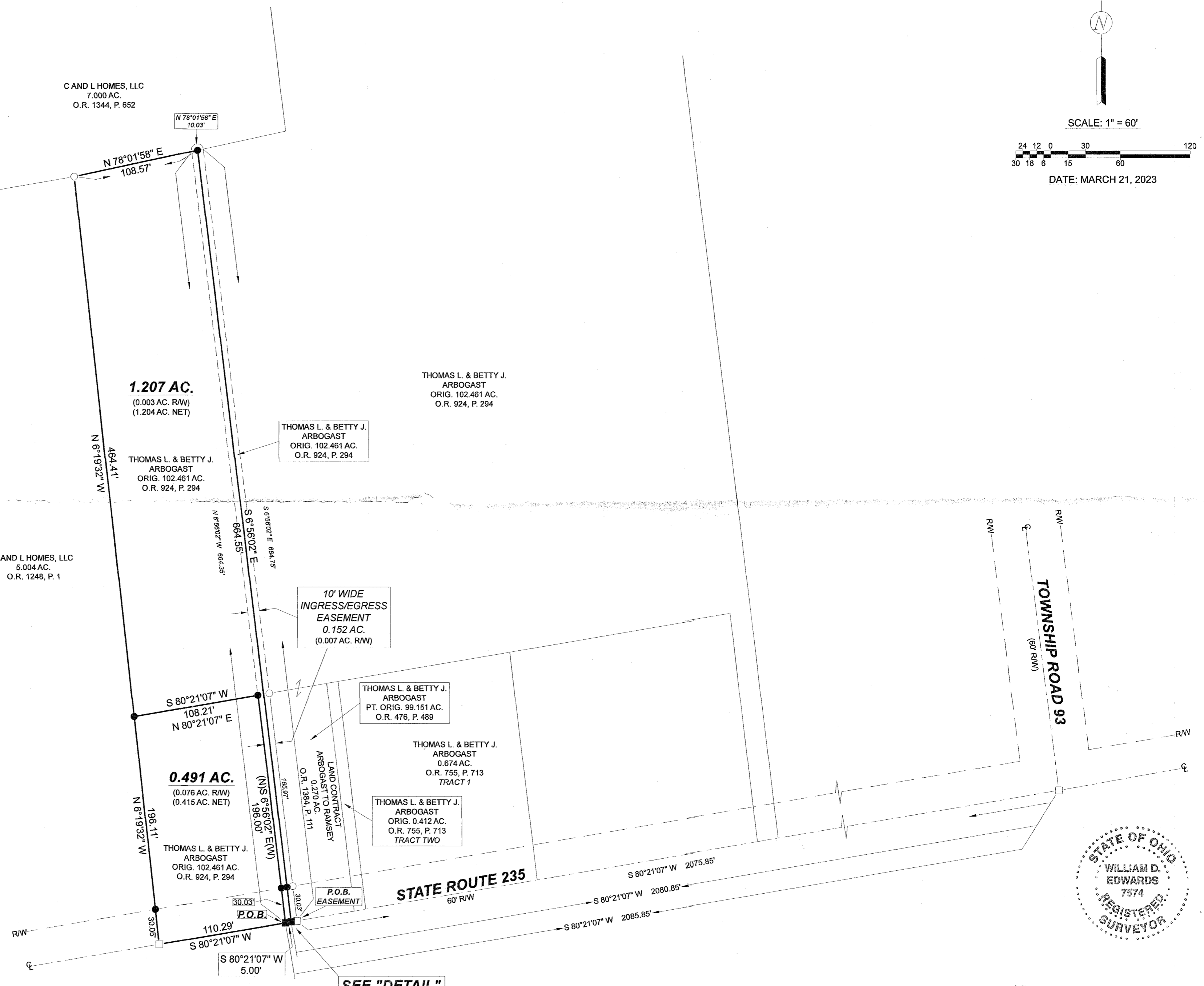
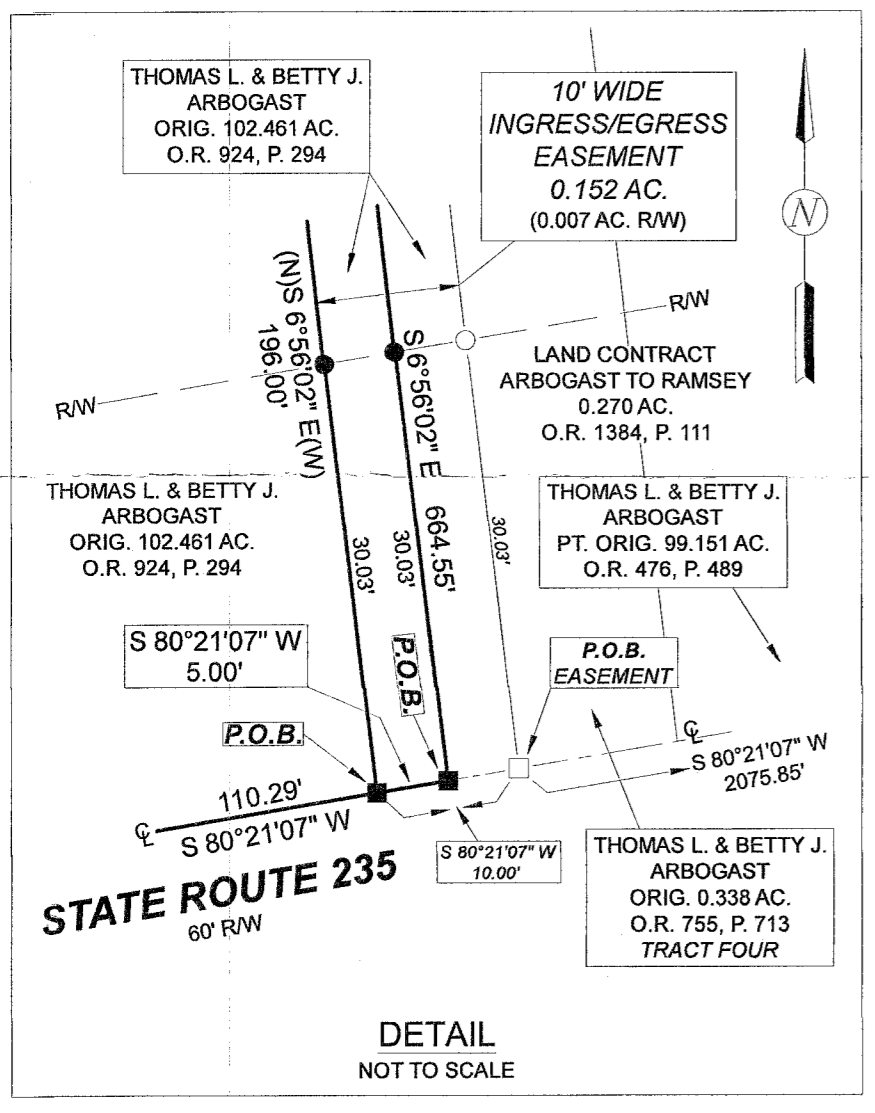
LEGEND

- = 5/8" DIA. IRON BAR.....FOUND
- = MAG NAIL.....FOUND
- = MAG NAIL.....SET at grade
- = 5/8"x30" IRON RE-BAR WITH YELLOW PLASTIC CAP STAMPED "EDWARDS PS 7574".....SET at grade



C AND L HOMES, LLC
 7.000 AC.
 O.R. 1344, P. 652

C AND L HOMES, LLC
 5.004 AC.
 O.R. 1248, P. 1



- NOTES:**
1. BEARINGS ARE BASED ON THE CENTERLINE OF STATE ROUTE 235 PER AN ASSUMED BEARING OF S-80°21'07"-W.
 2. REFERENCES USED: DEEDS OF SUBJECT PREMISES AND ADJOINERS, COUNTY TAX AND AERIAL MAPS, PLATS OF SURVEYS IN THE VICINITY.

SEE "DETAIL"



SURVEYED BY:
 WILLIAM D. EDWARDS
 PROFESSIONAL SURVEYOR No. 7574
 110 SOUTH MAIN STREET
 URBANA, OHIO 43078
 (937)653-6508

12-4-2023



**DESCRIPTION OF SURVEY FOR
CHARLES RODNEY SIEBENECK
3.860 ACRES
December 1, 2023**

The following described 3.860 acre tract of land is situated in Virginia Military Survey 12276, Stokes Township, Logan County, Ohio and being part of Charles Rodney Siebeneck's and Haley Siebeneck's original 75.631 acre tract described in Official Record Volume 1093, page 519, said 3.860 acre tract of land more particularly described as follows:

Beginning for reference at a magnetic nail found at State Route 235 P.I. Station 160+98 as shown on sheet 3 of Highway Plan L-17, said magnetic nail also in the south line of Andrew Reinhart's 68.978 acre tract described in Official Record Volume 1411, page 1942;

Thence North 16°06'11" West 653.75 feet, leaving State Route 235 and crossing said 68.978 acre tract, to a stone found at the southwest corner of said 75.631 acre tract and in the west line of V.M.S. 12276 and in the east line of Fractional Section 14, Town 6, Range 8 Congress Lands, said stone marking the **place of beginning**;


Thence **North 18°46'55" West 403.67 feet**, following the west line of V.M.S. 12276, the east line of Fractional Section 14, the west line of said original 75.631 acre tract and an east line of said 68.978 acre tract, to an iron bar set;

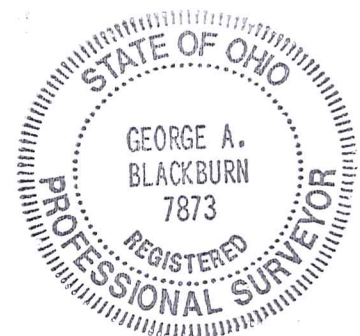
Thence **North 79°32'45" East 463.08 feet**, departing from the east line of Fractional Section 14 and an east line of said 68.978 acre tract, entering V.M.S. 12276 and said original 75.631 acre tract, to a 5/8 inch iron bar found at the northwest corner of C and L Homes, LLC's 1.000 acre tract described in Official Record Volume, 1390, page 435, said 1.000 acre tract formerly part of said original 75.631 acre tract;

Thence **South 06°47'35" East 400.12 feet**, following the west line of said 1.000 acre tract, to a 5/8 inch iron bar found in a north line of said 68.978 acre tract;

Thence **South 79°31'46" West 379.06 feet**, following the south line of said original 75.631 acre tract and a north line of said 68.978 acre tract, to the **place of beginning, containing 3.860 acres** more or less and subject to all valid easements and restrictions of record.

The above description was prepared from an actual field survey made by Blackburn Surveying, LLC, George A. Blackburn, Registered Surveyor # 7873, during the month of December 2023. Iron bars set are 5/8 inch by 30 inch reinforcing rods with plastic caps marked "Blackburn RS # 7873." Bearings indicated herein are based on the west line of V.M.S. 12276 bearing North 18°46'55" West and being derived from GPS observations based on Ohio State Plane Coordinate System, North Zone (NAD83), Geoid Model 2018.

Description prepared by:  12-1-2023
George A. Blackburn, RS # 7873
6879 State Route 287
West Liberty, Ohio 43357
(937) 465-0424



12-4-2023

APPROVED

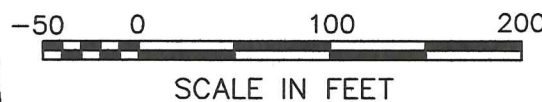
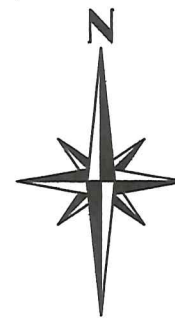
PLAT OF SURVEY FOR CHARLES RODNEY SIEBENECK IN VIRGINIA MILITARY SURVEY 12276 STOKES TOWNSHIP LOGAN COUNTY, OHIO

Charles Rodney Siebeneck
and Haley Siebeneck
original 75.631 acres
O.R. 1093, pg. 519

3.860 Acres

Part of Charles Rodney Siebeneck's
and Haley Siebeneck's
original 75.631 acre tract
described in O.R. 1093, pg. 519

This tract is to be attached to
an adjoining parcel and may not
be used as a separate or
independent tract.



O.R. 1411,
Andrew Reinhart
68.978 acres
pg. 1942

(Basis of Bearing)
N18°49'35"W
403.67'
ROBERTS LINE
CONGRESS LANDS

N79°32'45"E
463.08'

P/L
109.14'

S6°47'35"E
400.12'

C AND L HOMES, LLC
1,000 acres
O.R. 1390, pg. 435

S79°31'46"W
379.06'

Andrew Reinhart
68.978 acres
O.R. 1411, pg. 1942

PLACE OF BEGINNING

LEGEND

- MAGNETIC NAIL FOUND
- 5/8" IRON BAR FOUND
- 5/8" IRON BAR SET
- △ STONE FOUND

NOTE:

The bearings shown hereon
are derived from GPS observations
based on Ohio State Plane
Coordinate System, North
Zone (NAD 83), Geoid Model 2018.

This survey was prepared in the
absence of a complete and
accurate title search and does not
guarantee title. A title search is
recommended to determine easements,
restrictions and/or other encumbrances
that may affect the property.



I HEREBY CERTIFY THAT THIS PLAT WAS PREPARED FROM AN
ACTUAL FIELD SURVEY MADE UNDER MY DIRECT SUPERVISION
AND MONUMENTS WERE PLACED AS INDICATED HEREON.

George A. Blackburn 12-1-2023
GEORGE A. BLACKBURN, R.S. 7873

REFERENCE BEGINNING
P.I. STA. 160+98
SHEET 3 OF 6

STATE ROUTE 235 (60')
HIGHWAY PLAN L-17

V.M.S. 12276
653.75'
N16°06'11"W

FRACTIONAL SEC 14, T. 6, R. 8

N70°09'08"E
118.97'

BLACKBURN SURVEYING, LLC
6879 STATE ROUTE 287
WEST LIBERTY, OHIO 43357
(937) 465-0424

DATE: 12/1/2023
SCALE: 1" = 100'
FILE: Rodney Siebeneck 11-23

PLAT PREPARED FOR
CHARLES RODNEY SIEBENECK

Sheet
1
of
1

INDEXED ON MAP
808