

Received 8-23-93
OK 924



Lee Surveying and Mapping Co.



Farm Surveys • Lot Surveys • Topography • Subdivisions • Construction Layout

143 EAST COLUMBUS AVENUE
BELLEFONTAINE, OHIO 43311

(513) 593-7335

JEFFREY I. LEE, P.S.

AERIE 3615 FRATERNAL ORDER OF EAGLES, INC. 0.351 ACRE

Lying in Virginia Military Survey 12276, Stokes Township, Logan County, Ohio.

Being out of the Aerie 3615, Fraternal Order of Eagles, Inc. original 14.76 acre tract as deeded and described in Official Record 99, Page 722 of the Logan County Records of Deeds and being more particularly described as follows:

Beginning at a 5/8 inch iron rod found at the southeast corner of the Kevin Wayne Moore 1.24 acre tract (O.R. 28, Pg. 850) and the west right-of-way of Shawnee Path (30.5 feet wide).

THENCE, with the west line of Shawnee Path, S 17°-03'-56" E, a distance of 30.02 feet to a 5/8 inch iron rod set.

THENCE, 30.00 feet distant and parallel with the south line of the said 1.24 acre tract, S 70°-45'-00" W, a distance of 329.98 feet to a 5/8 inch iron rod set.

THENCE, 30.00 feet distant and parallel with the west line of the said 1.24 acre tract, N 17°-02'-51" W, a distance of 210.07 feet to a railroad spike set on the center-line of State Route 235.


THENCE, with the center-line of State Route 235, N 70°-45'-00" E, a distance of 30.02 feet to a PK Nail found at the northwest corner of the said 1.24 acre tract.

THENCE, with the lines of the said 1.24 acre tract the following two courses: S 17°-02'-51" E, a distance of 180.05 feet to a 5/8 inch iron rod found at the southwest corner of the 1.24 acre tract.
N 70°-45'-00" E, a distance of 299.95 feet to the point of beginning.

Containing 0.351 acre of which 0.021 acre is within the highway right-of-way.

The basis for bearings is based upon the center-line of State Route 235 being N 70°-45'-00" E, and all other bearings are from angles and distances measured in a field survey by Lee Surveying and Mapping Company on August 20, 1993.

Description prepared by:

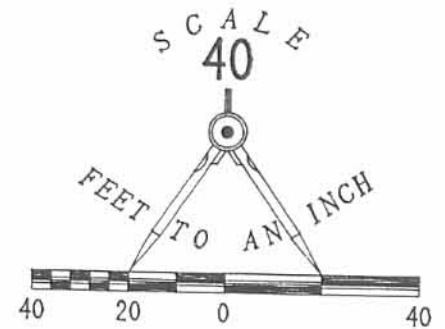
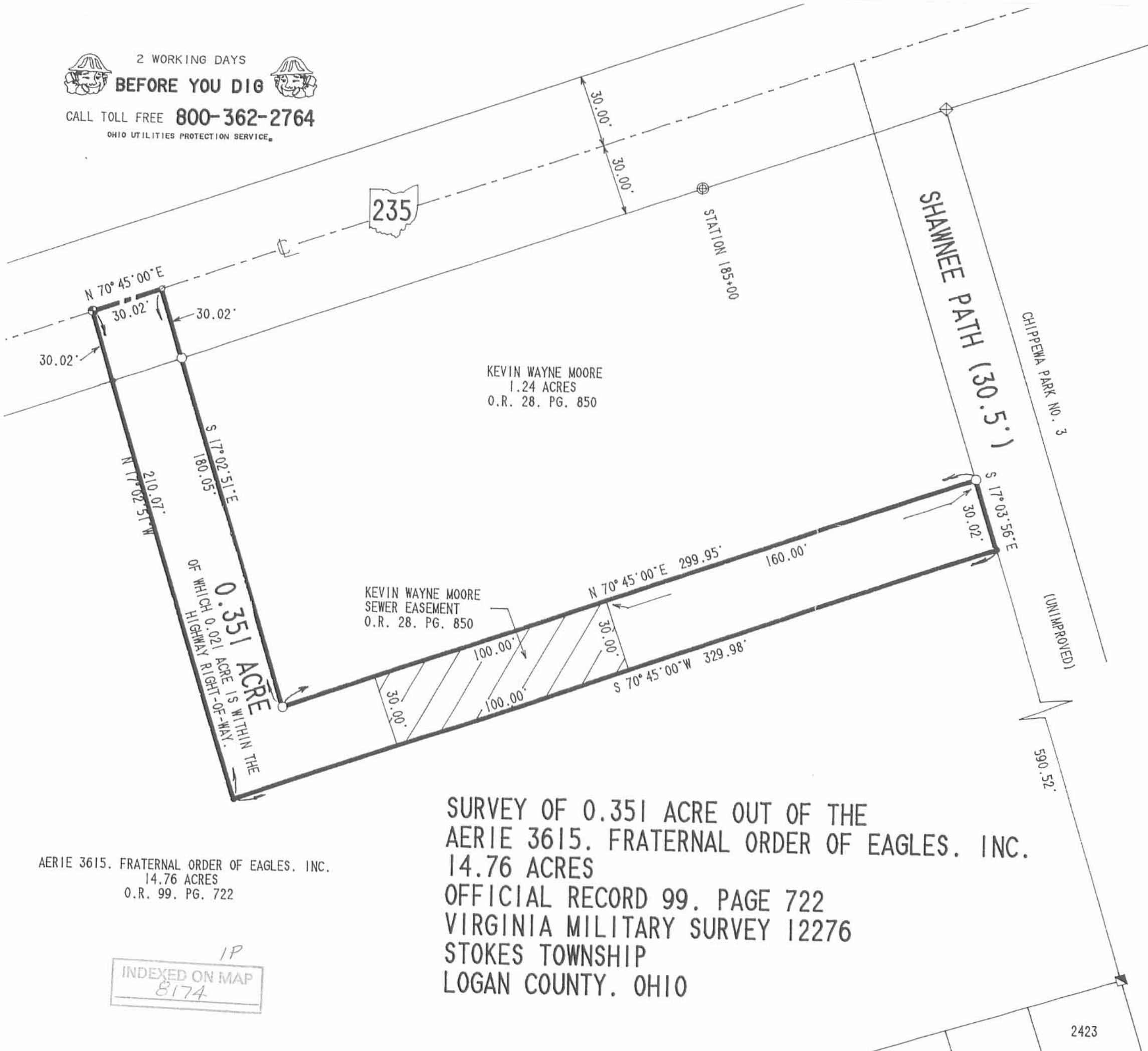

Jeffrey I. Lee
Professional Surveyor 6359
August 20, 1993



L 2110-3

ORIGINAL STAMP IN GREEN

1D
INDEXED ON MAP
8174



- LEGEND:**
- 5/8" IRON ROD SET
 - 5/8" IRON ROD W/ LOGAN CO. ENGINEER PLASTIC I.D. CAP FOUND
 - ⊕ RAILROAD SPIKE SET
 - ⊗ P.K. NAIL FOUND
 - 0.7' x 0.7' CONCRETE POST FOUND
 - ⊠ IRON BOLT W/ 1" SQUARE HEAD FOUND
 - ⊙ CONCRETE RIGHT-OF-WAY MONUMENT FOUND

- REFERENCES:**
1. LOGAN COUNTY ENGINEER'S SURVEY RECORDS. DRAWER "R". FILE NUMBERS 4186, 5184 & 7535.
 2. OFFICE OF LOGAN COUNTY RECORDER. PLAT OF CHIPPEWA PARK NO. 3. PLAT CABINET "A". SLIDE 235.
 3. LOGAN COUNTY ENGINEER PLAN L-17. S.H. 232 R/W PLANS. SEC. A. SHEET 4 OF 6.
 4. LOGAN COUNTY ENGINEER SURVEY RECORDS. FILE NO. J-279.

**SURVEY OF 0.351 ACRE OUT OF THE
 AERIE 3615. FRATERNAL ORDER OF EAGLES, INC.
 14.76 ACRES
 OFFICIAL RECORD 99. PAGE 722
 VIRGINIA MILITARY SURVEY 12276
 STOKES TOWNSHIP
 LOGAN COUNTY, OHIO**

AERIE 3615. FRATERNAL ORDER OF EAGLES, INC.
 14.76 ACRES
 O.R. 99. PG. 722

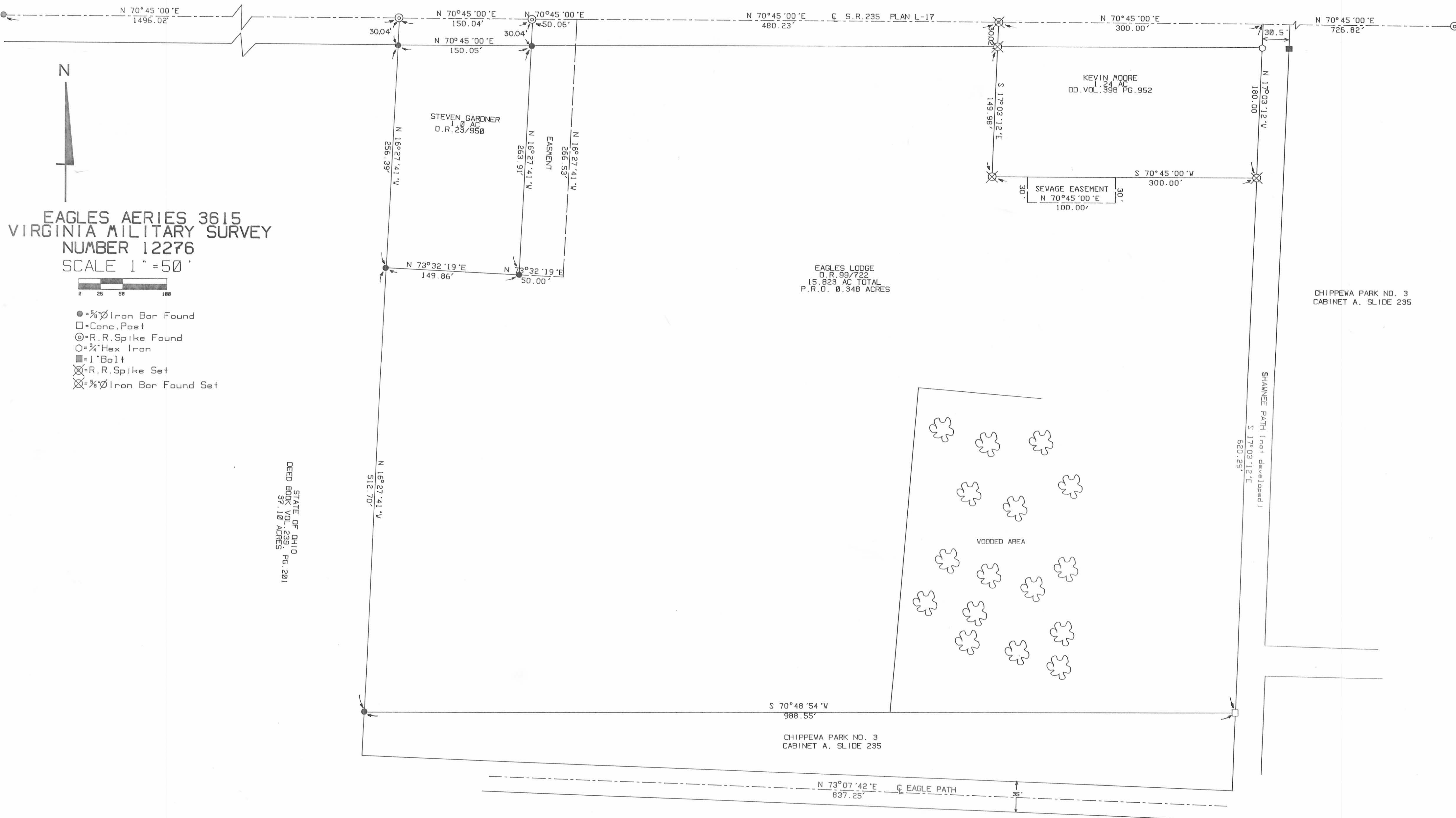
INDEXED ON MAP
 8174



SURVEYED BY:

JEFFREY I. LEE
 PROFESSIONAL SURVEYOR 6359
 JULY 27, 1993
 REVISED AUGUST 20, 1993

LEE SURVEYING & MAPPING
 143 East Columbus Avenue
 BELLEFONTAINE, OHIO 43311
 (513) 593-7335

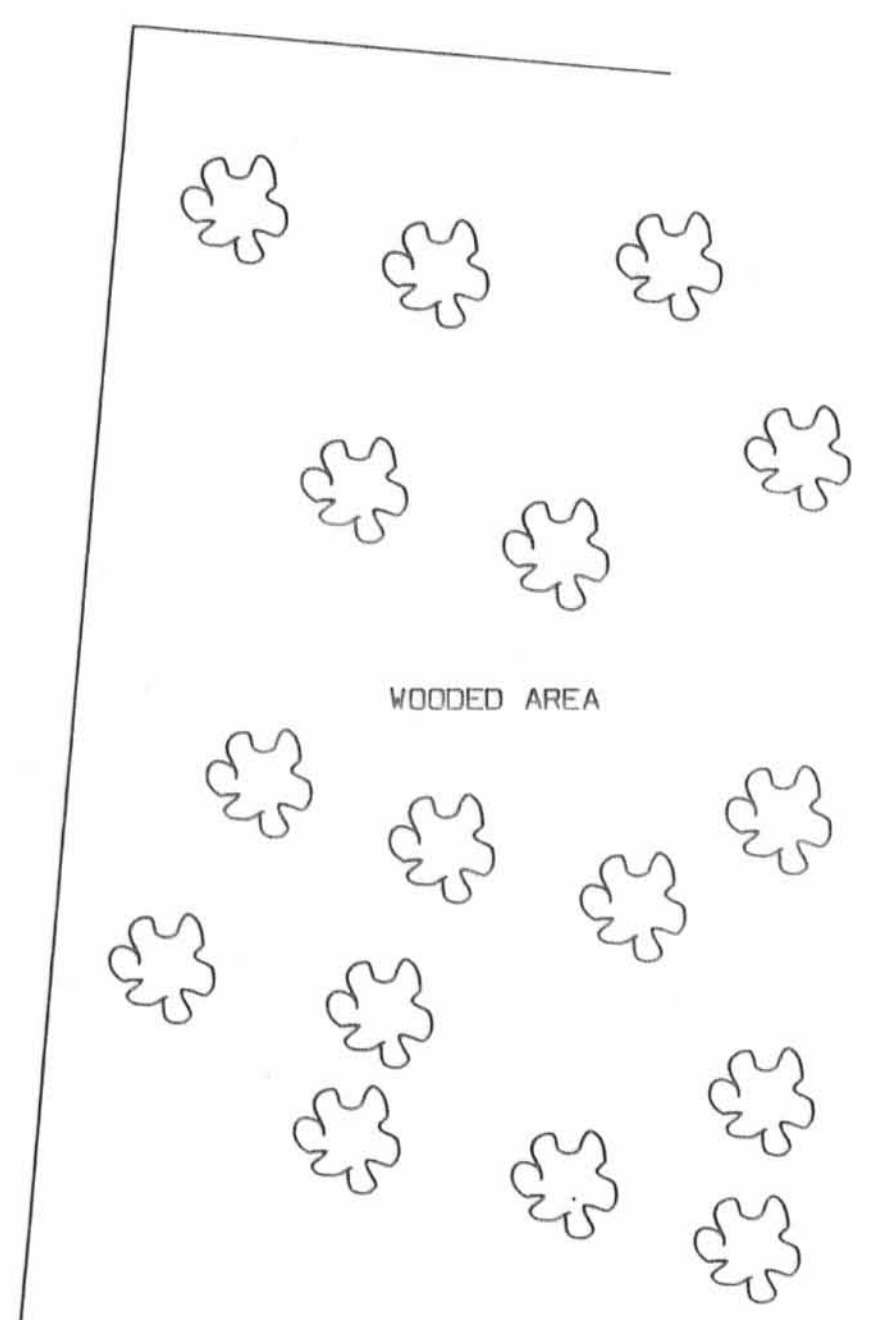


N
 EAGLES AERIE 3615
 VIRGINIA MILITARY SURVEY
 NUMBER 12276
 SCALE 1" = 50'
 0 25 50 100

- = 1/4" Iron Bar Found
- = Conc. Post
- ⊙ = R.R. Spike Found
- = 1/4" Hex Iron
- = 1" Bolt
- ⊗ = R.R. Spike Set
- ⊗ = 1/4" Iron Bar Found Set

STATE OF OHIO
 DEED BOOK VOL. 239, PG. 201
 37.10 ACRES

EAGLES LODGE
 O.R. 99/722
 15.823 AC TOTAL
 P.R.O. 0.348 ACRES



KEVIN ADRE
 1.24 AC
 DD. VOL. 398 PG. 952

SEWAGE EASEMENT
 N 70°45'00"E
 100.00'

CHIPPEWA PARK NO. 3
 CABINET A. SLIDE 235

Surveyed by the Logan County
 Engineering Department
 July 18, 1990 to July 26, 1991



James K. Cox
 James K. Cox P.E., P.S.
 Reg. Surveyor No. 7336
 Chief Deputy Engineer

CADD FILE : D:EAGLES2
 LOGAN COUNTY ENGINEER
 CHESTER R. KURTZ
 PROPERTY MAP
 EAGLES AERIE 3615
 VIRGINIA MILITARY SURVEY
 NUMBER 12276
 Stokes Township
 Logan County