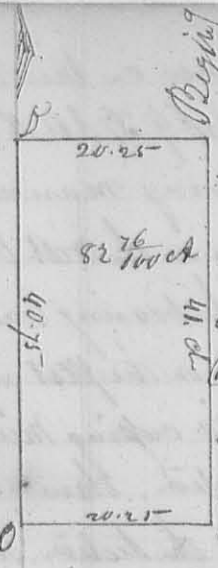


N<sup>o</sup> 228



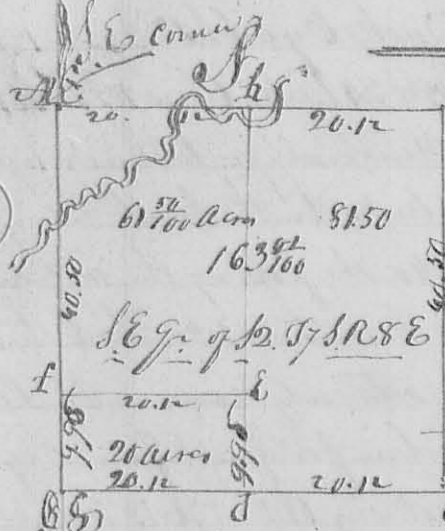
A Surveyed Sept<sup>r</sup> 1833 for Jonathan Lorton  
 the E half of the Sec 9 of T23 S3R 13W2S. as follows. Begin  
 ning at the interior gr. corner at a Beech 22<sup>nd</sup> N 39° 59' E.  
 a Rod a Beech 8<sup>th</sup> S 70° 23' Links. thence South 41 chains to a  
 Beech 12<sup>th</sup> North 10 E. 50 8<sup>th</sup> S 60° 9' E thence West with the  
 South line of the section 20 ch. 25 L to a Beech 18<sup>th</sup> S 61° 33' Links  
 and same 22 E. S. 71° 39' E thence North 40 ch. 75 Links to a  
 Beech 12<sup>th</sup> South 8 E. 50 10<sup>th</sup> S 76° 34'. thence N 89° 56'  
 20 chain, 25 links to the beginning containing Eighty two and twenty six  
 hundredths of an acre -  
 D. Hopkins dep<sup>y</sup> S. L.

8311

8312

Surveyed September 18<sup>th</sup> 1833 for M<sup>r</sup> J. Alex. Hinkle a tract apart of  
 S22 S7 SR 8 E the West 1/2 of 1 E q. 8 and West 1/2 of N 6 q. of the foregoing section  
 as follows. Beginning on the north boundary 80 poles West of the N 6  
 corner of the section at Gauley King 6<sup>th</sup> S 32° E 88 Links N. 30<sup>th</sup> S  
 S. or 121 links. thence S 33° E 80 ch. 25 links to a White Oak 22<sup>nd</sup> S  
 78° 12' Links. 50 20<sup>th</sup> S 86° 47' Links. thence S 86° 10' 7 ch. to a stake in  
 a prairie in the line of a tract of land sold granted by Congress to  
 Nancy Stewart and heirs. thence N 20° W to the N E corner of said  
 N. Stewart's tract. thence S 72° W to a point that a line bearing S 3° 50' E  
 from the gr. corner on the north line of the section will strike this point. then  
 N 3° 50' W 78.75 links to the gr. corner on the north line of the section. thence  
 N 86° 10' E 20 chains to the beginning. Containing 156. Acres  
 D. Hopkins dep<sup>y</sup> S. L.

N<sup>o</sup> 229



B. orig. corner. Notes y<sup>e</sup> ✓  
 1<sup>st</sup> AB S 86° 10' W 40.25 ch. crossing river 2 times to orig. corner  
 BC S 33° 50' W 40.50 ch. to corner at C. thence  
 CG N 86° 10' E 40.25 to the N E corner of the gr. thence  
 GA S 33° 50' E 40.50 crossing the R. River to the beginning  
 containing 163 7/100 acres - but divided as follows into  
 two Equal parts. beginning on the South line of the  
 sec 12 20<sup>th</sup> S 86° 10' W 57 E. Elm. 30<sup>th</sup> S 76° 29' E.  
 C gr. at the "a" Beech corner box. thence N 33° 50' W 40<sup>th</sup>  
 chain to "d". a Maple 14<sup>th</sup> S 83° 07' 27 links. an Ash 18. 10<sup>th</sup> S 40 links  
 then off the north end of the east half of said gr. laid off 20 acres as above  
 thence. corner at "E". Beech 12<sup>th</sup> N 76° E 35 50 or 135° 30 links. corner at "F"  
 Beech 8<sup>th</sup> S 109° W 19 E. 50 10<sup>th</sup> S 37° W 27 E. at G N E corner of the gr. orig. corner.  
 Sept-18. 1833  
 D. Hopkins, dep<sup>y</sup> S. L.

8313