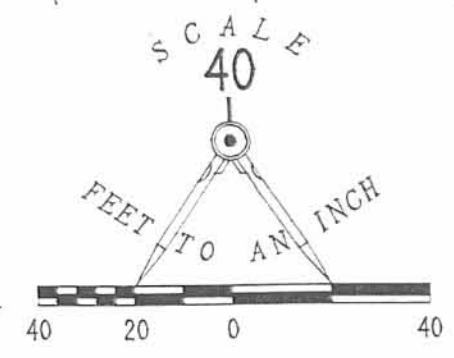


SURVEY OF LOTS 5 AND 6
 JESSIE J. AND GRACE E. SPILLMAN
 (OFFICIAL RECORD 115, PAGE 431)
 WISE ALLOTMENT OF ISLANDVIEW
 STOKES TOWNSHIP, LOGAN COUNTY, OHIO

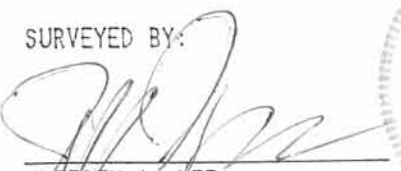


LEGEND

- 1/2" IRON ROD FOUND
- 5/8" IRON ROD FOUND
- ⊙ PK NAIL FOUND
- 5/8" IRON ROD SET
- 1" IRON ROD FOUND

REFERENCES

- LEE SURVEYING AND MAPPING CO.
L 1641-5
- LOGAN COUNTY ENGINEER'S
FIELD BOOK 704, PAGE 1
- PLAT OF WISE ALLOTMENT OF
ISLANDVIEW
PLAT CABINET A. SLIDE 193

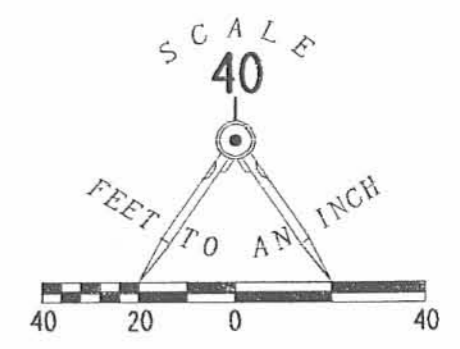
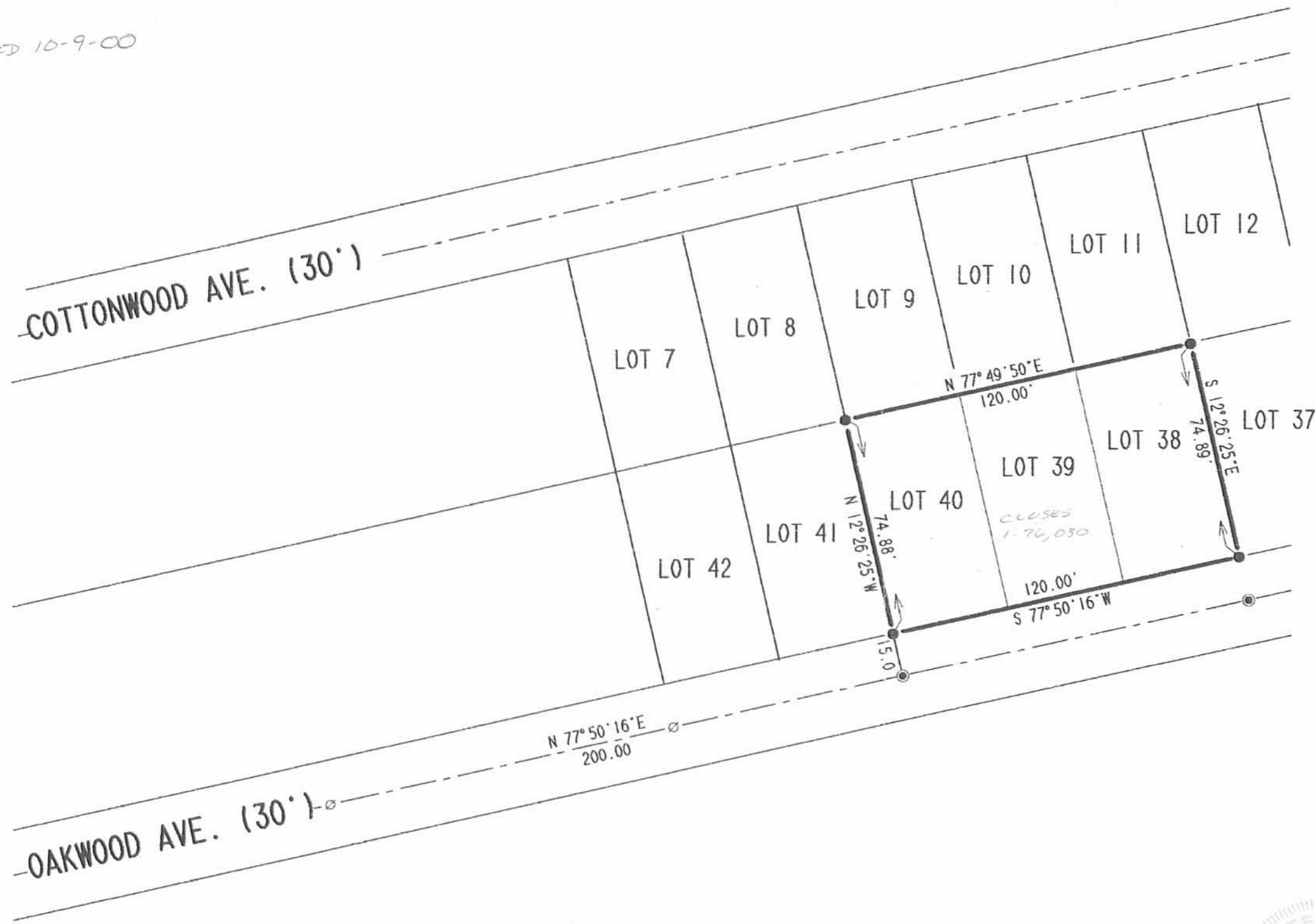
SURVEYED BY:

 JEFFREY I. LEE
 PROFESSIONAL SURVEYOR 6359
 JANUARY 29, 1993



ORIGINAL MAP IN GREEN
LEE SURVEYING & MAPPING CO.
 143 East Columbus Avenue
 BELLEFONTAINE, OHIO 43311
 (513) 593-7335

1P
 INDEXED ON MAP
 8769

RED 10-9-00



- LEGEND
- ⊙ PK NAIL FOUND
 - ⊙ MAG NAIL SET
 - 5/8" IRON ROD SET

RETRACEMENT SURVEY
 LOTS 38, 39, AND 40
 WISE ALLOTMENT
 ISLANDVIEW
 PLAT CABINET A. SLIDE 193
 STOKES TOWNSHIP
 LOGAN COUNTY OHIO

SURVEYED BY:

Jeffrey I. Lee
 JEFFREY I. LEE
 PROFESSIONAL SURVEYER 6359
 OCTOBER 6, 2000



2 WORKING DAYS
BEFORE YOU DIG
 CALL TOLL FREE **800-362-2764**
 OHIO UTILITIES PROTECTION SERVICE.

2P
 8769

COPYRIGHT 2000 BY:
 LEE SURVEYING & MAPPING CO., INC.
 117 North Madriver Street
 BELLEFONTAINE, OHIO 43311
 (937) 593-7335

Recd 10-27-00 Smy OK ✓

Lee Surveying and Mapping Co., Inc.

Land Surveys • Topography • Subdivisions • Construction Layout

117 N. Madriver St.
Bellefontaine OH 43311



Phone: (937) 593-7335
Fax: (937) 593-7444

WISE ALLOTMENT LOT 40 10 FEET SANITARY SEWER EASEMENT

Lying in Stokes Township, Logan County, Ohio.

Being a 10 feet wide sanitary sewer easement through Lot 40 of the Wise Allotment of Island View as dedicated in Plat Cabinet A, Slide 193 of the Logan County Records of Plats and being more particularly described as follows:

Beginning at a 5/8 inch iron rod set on the north right-of-way of Oakwood Avenue (30 feet wide) at the southeast corner of Lot 41.

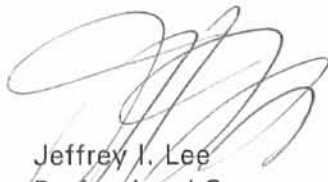
THENCE, with the east line of Lot 41, N 12°-26'-25" W, a distance of 42.50 feet to a point at the TRUE POINT OF BEGINNING, being the center-line of the 10 feet wide easement.

THENCE, S 40°-41'-20" E, with the said center-line a distance of 38.1 feet to a point.

THENCE, S 12°-26'-25" E, with the said center-line a distance 9.0 feet to the point of termination on the south line of Lot 40.

The basis for bearings is the center-line of Oakwood Avenue being, N 77°-50'-16" E, and all other bearings are from angles and distances measured in a field survey by Lee Surveying and Mapping Co., Inc. on October 11, 2000.

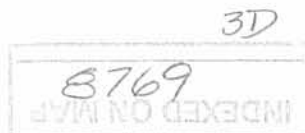
Description prepared by:

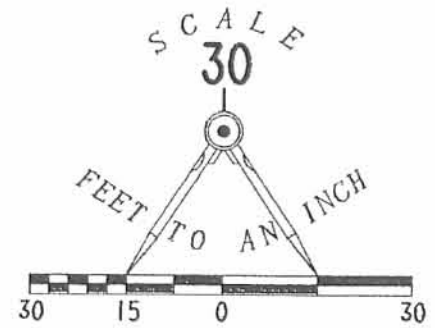
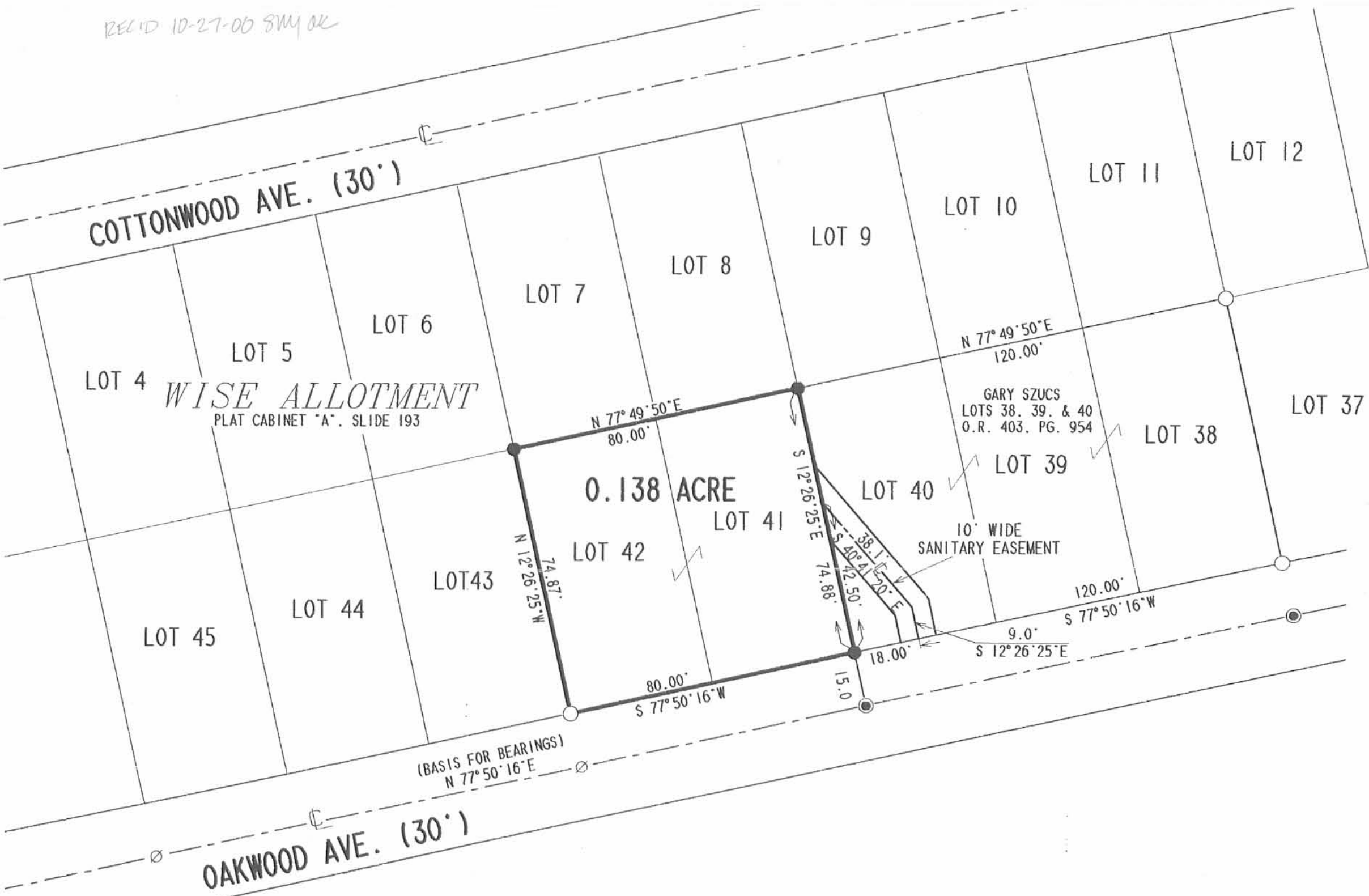

Jeffrey I. Lee
Professional Surveyor 6359
October 16, 2000



ORIGINAL STAMP IN GREEN

L-3035





- LEGEND
- ⊗ PK NAIL FOUND
 - ⊙ MAG NAIL SET
 - 5/8" IRON ROD SET
 - 5/8" IRON ROD FOUND

RETRACEMENT SURVEY OF THE EDWIN STEWART DALIE, JR.
 LOTS 41 AND 42 AND A SANITARY EASEMENT THROUGH LOT 40
 OF THE WISE ALLOTMENT OF ISLAND VIEW
 PLAT CABINET A. SLIDE 193
 STOKES TOWNSHIP
 LOGAN COUNTY, OHIO

SURVEYED BY:

 JEFFREY I. LEE
 PROFESSIONAL SURVEYER 6359
 OCTOBER 11, 2000



COPYRIGHT 2000 BY:
 LEE SURVEYING & MAPPING CO., INC.
 117 North Madriver Street
 BELLEFONTAINE, OHIO 43311
 (937) 593-7335

2 WORKING DAYS
BEFORE YOU DIG
 CALL TOLL FREE **800-362-2764**
 OHIO UTILITIES PROTECTION SERVICE.

3P
 8769
 INDEXED ON MAP

ORIGINAL STAMP IN GR DE 388

DALIE SZUCS.DAT

L-3035-3