

Received 8-30-93

OK 8-31-93

LESLIE H. GEESLIN
REGISTERED SURVEYOR NO. 5248
P.O. BOX 274
RUSHSVLVANIA, OHIO 43347
TELEPHONE: (513) 468-2793

KOENIG SURVEY

August 30, 1993

The following described real estate situated in the State of Ohio, County of Logan, Township of Stokes, being part of Virginia Military Survey 12276 and more particularly described as follows:

Beginning at a 5/8 inch iron bar found at the northeast corner of Lot 7 of Houser Allotment.

Thence with the north line of said Lot projected S. 49° 58' 07"E. 11.50 feet to the shore line of Indian Lake.

Thence with said shore line S. 45° 26' 27" W. 26.65 feet to a point.

Thence with said shore line S. 57° 52' 52" W. 21.70 feet to a point.

Thence with the south line of Lot 7 projected N. 47° 14' 23" W. 10.50 feet to a 5/8 inch iron bar set at the southeast corner of said Lot 7.

Thence with the east line of Lot 7 N. 54° 12' 30" E. 21.00 feet to a 5/8 inch iron bar found.

Thence with the east line of said Lot 7 N. 46° 32' 30" E. 26.50 feet to the place of beginning.

Containing 0.012 acre more or less or 543.5 square feet.

The above described 0.012 acre tract being part of the State of Ohio's Indian Lake State Park.

Bearings are based on an assumed bearing (S. 49° 58' 07" E.) for the north line of Lot 7 in this field survey by Leslie H. Geeslin.

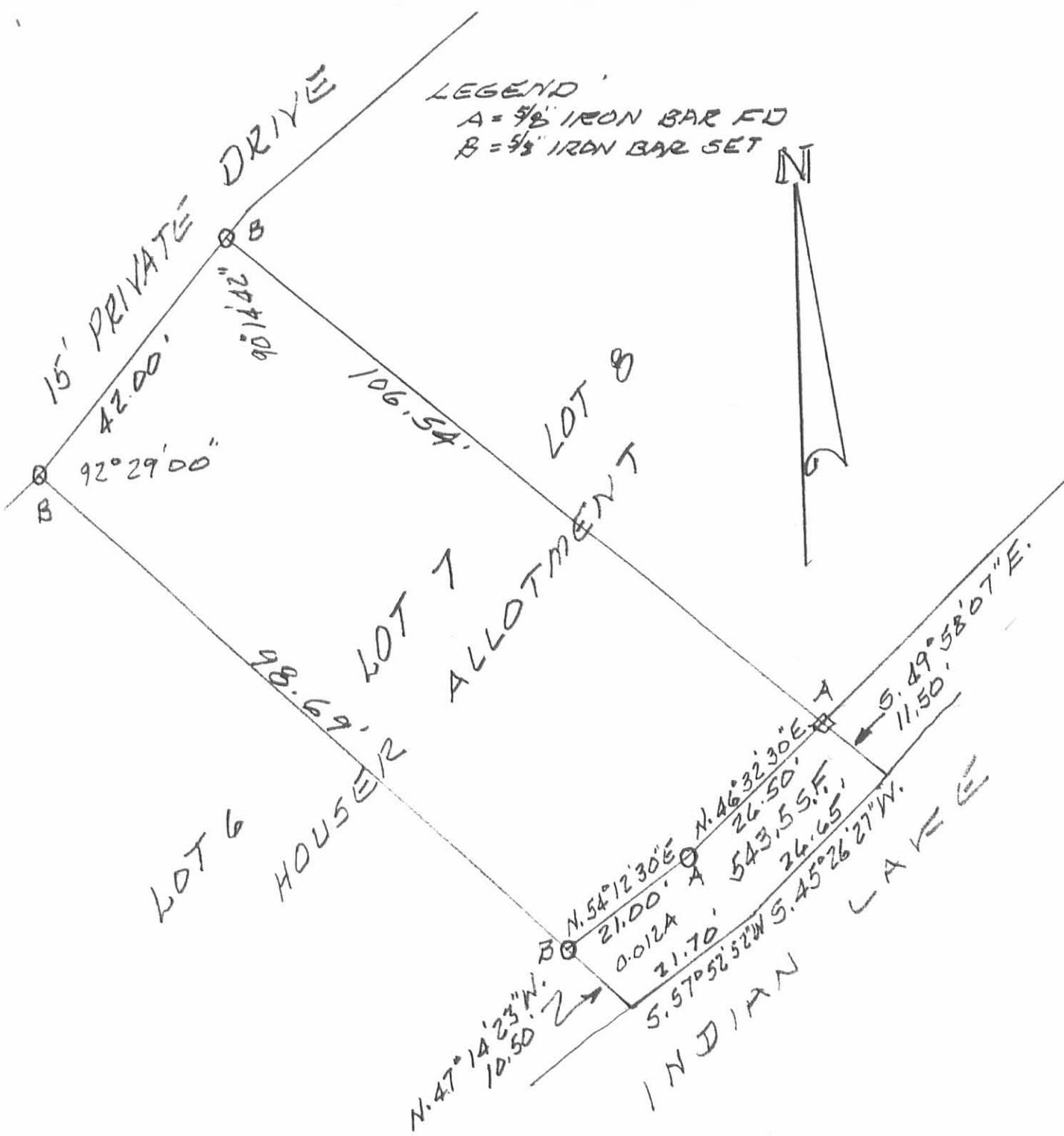


Leslie H. Geeslin

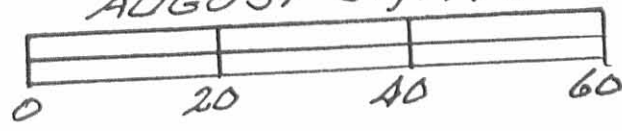
INDEXED ON MAP
8835

1D

LEGEND
 A = 5/8" IRON BAR ED
 B = 5/8" IRON BAR SET



SURVEY OF 0.012 AC. TRACT IN VIRGINIA MILITARY SURVEY 12276, STOKES TOWNSHIP, LOGAN COUNTY, OHIO FOR LORI KOENIG. AUGUST 30, 1993



INDEXED ON MAP
 8835

Leslie H. Geeslin
 LESLIE H. GEESLIN
 RUSHLY, OHIO
 PH 513-468-2793

REV'D 9-13-04 SMJ/OK

Lee Surveying and Mapping Co., Inc.

Land Surveys • Topography • Subdivisions • Construction Layout

117 N. Madriver St.
Bellefontaine OH 43311



Phone: (937) 593-7335
Fax: (937) 593-7444

EVERHARDT 0.007 ACRE

Lying in Virginia Military Survey 12276, Stokes Township, Logan County, Ohio.

Being part of the Kevin L. Everhardt and Stephanie J. Everhardt undedicated private driveways, walk-ways and other undedicated areas in the Houser Allotment as deeded and described in Official Record 68, Page 325 and more particularly described as follows:

Beginning at a 5/8 inch iron rod found at the northwest corner of Lot Number 9 of Houser Allotment as dedicated in the Logan County Record of Plats in Plat Cabinet A, Slide 357.

THENCE, with the south right-of-way line of a 20 feet wide private drive, N 56°-00'-53"E, a distance of 19.96 feet to a 5/8 inch iron rod set at a northeast corner of Lot Number 9 at the TRUE POINT OF BEGINNING.

THENCE, with the extension of the south right-of-way line of the said 20 feet wide private drive, N 56°-00'-53"E, a distance of 19.96 feet to a 5/8 inch iron rod found.

THENCE, with the extension of the west line of a walkway platted on the aforesaid Allotment, S 46°-10'-50"E, a distance of 15.00 feet to a 5/8 inch iron rod set.

THENCE, with a north line of Lot Number 9, S 56°-00'-53"W, a distance of 19.96 feet to a 5/8 inch iron rod set.

THENCE, with an east line of Lot Number 9, N 46°-10'-51"W, a distance of 15.00 feet to the point of beginning.

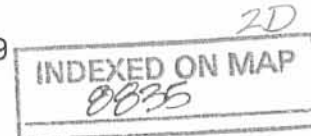
Containing 0.007 acre.

The basis for bearings is the most easterly line of Lot Number 9 being N 46°-10'-50"W, and all other bearings are from angles and distances measured in a field survey by Lee Surveying and Mapping Co., Inc. on September 7, 2004.



Description prepared by:

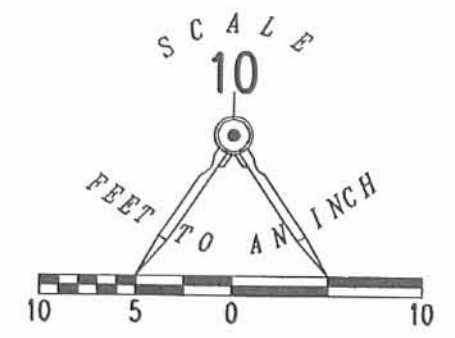
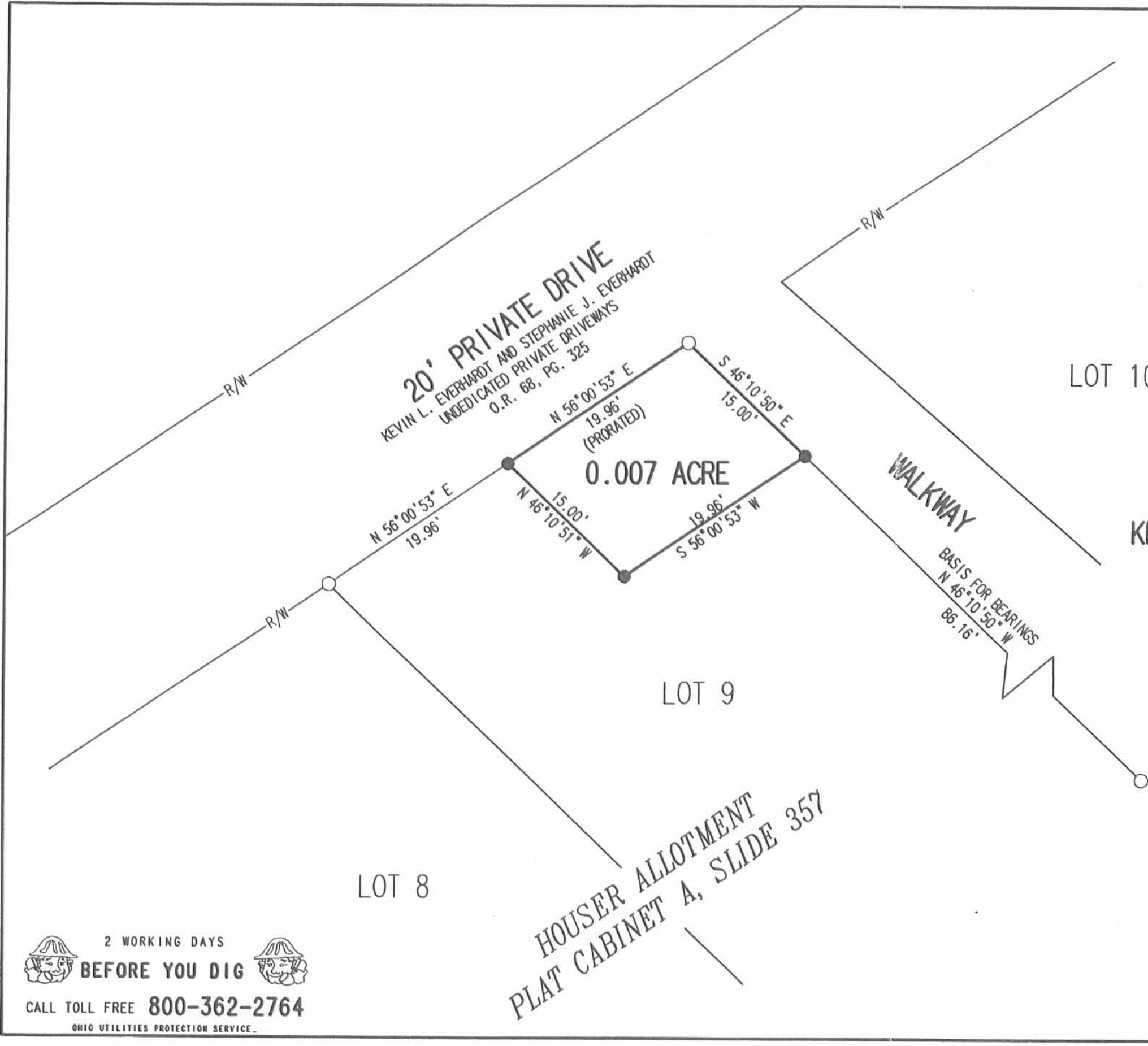
[Signature]
Jeffrey I. Lee
Professional Surveyor 6359
September 8, 2004



3899094

ORIGINAL STAMP IN GREEN

REV'D 9-13-04 SML/CL



- LEGEND
- 5/8 INCH IRON ROD SET
 - 5/8 INCH IRON ROD FOUND

A SURVEY OF A 0.007 ACRE TRACT
 OUT OF THE
 KEVIN L. EVERHARDT AND STEPHANIE J. EVERHARDT
 UNDEDICATED PRIVATE DRIVEWAYS
 OFFICIAL RECORD 68, PAGE 325
 HOUSER ALLOTMENT
 PLAT CABINET A, SLIDE 357
 VIRGINIA MILITARY SURVEY 12276
 STOKES TOWNSHIP
 LOGAN COUNTY, OHIO

SURVEYED BY:

Jeffrey J. Lee
 JEFFREY J. LEE
 PROFESSIONAL SURVEYOR 6359
 SEPTEMBER 7, 2004



COPYRIGHT 2004 BY:
 LEE SURVEYING & MAPPING CO., INC.
 117 North Madriver Street
 BELLEFONTAINE, OHIO 43311
 (937) 593-7335

ADW D413 3899094 L-3899094-3

2 WORKING DAYS
BEFORE YOU DIG
 CALL TOLL FREE **800-362-2764**
 OHIO UTILITIES PROTECTION SERVICE

HOUSER ALLOTMENT
 PLAT CABINET A, SLIDE 357

INDEXED ON MAP
 0035

2P