

S. R. No. 235

- 60'



Scale: 1" = 40'



Reference:
Chippewa Park No. 3
Plat Cab. A Slide No. 235

Symbols:
○ - 5/8" x 30" Rebars Fd.
● - 5/8" x 30" Rebars Set.

Survey of Lots No. 1536 thru 1542
Chippewa Park No. 3, Stokes Township,
Logan County, Ohio.

SCALE: 1" = 40'	APPROVED BY:	DRAWN BY: DEG
DATE: 4-3-1997		REVISED:

Daniel E. Gilbert
Daniel E. Gilbert, P.S.
Reg. Sur. No. 5402

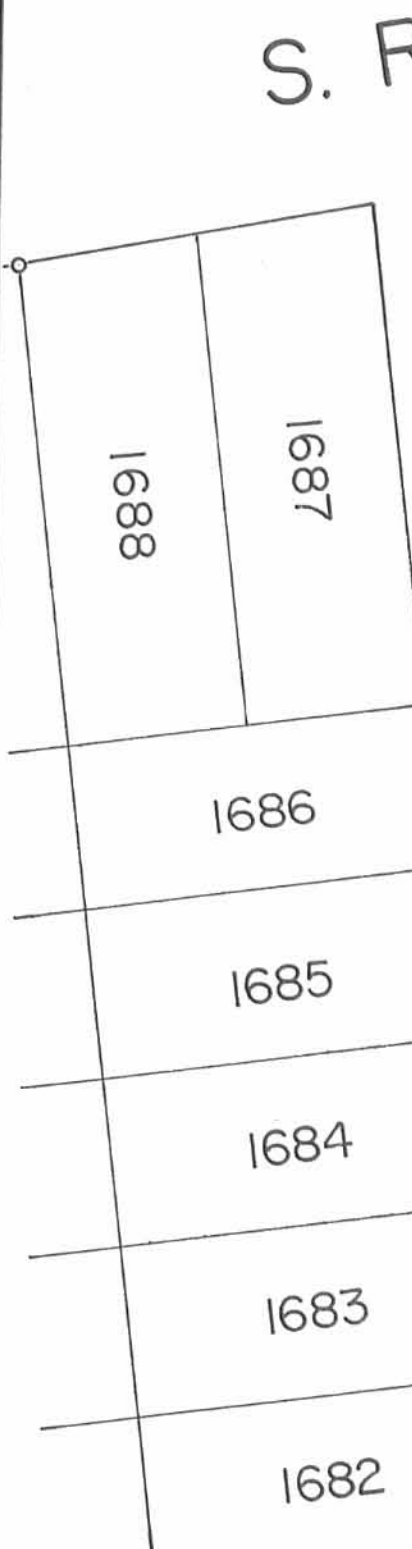
DRAWING NUMBER
097-012

CHICASAW

PATH - 35'

KICKAPOO

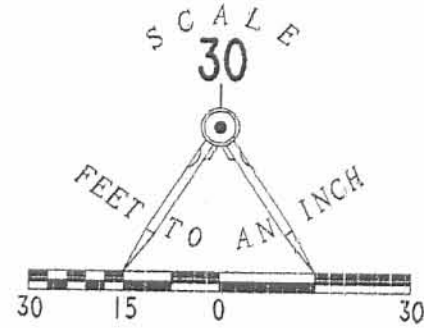
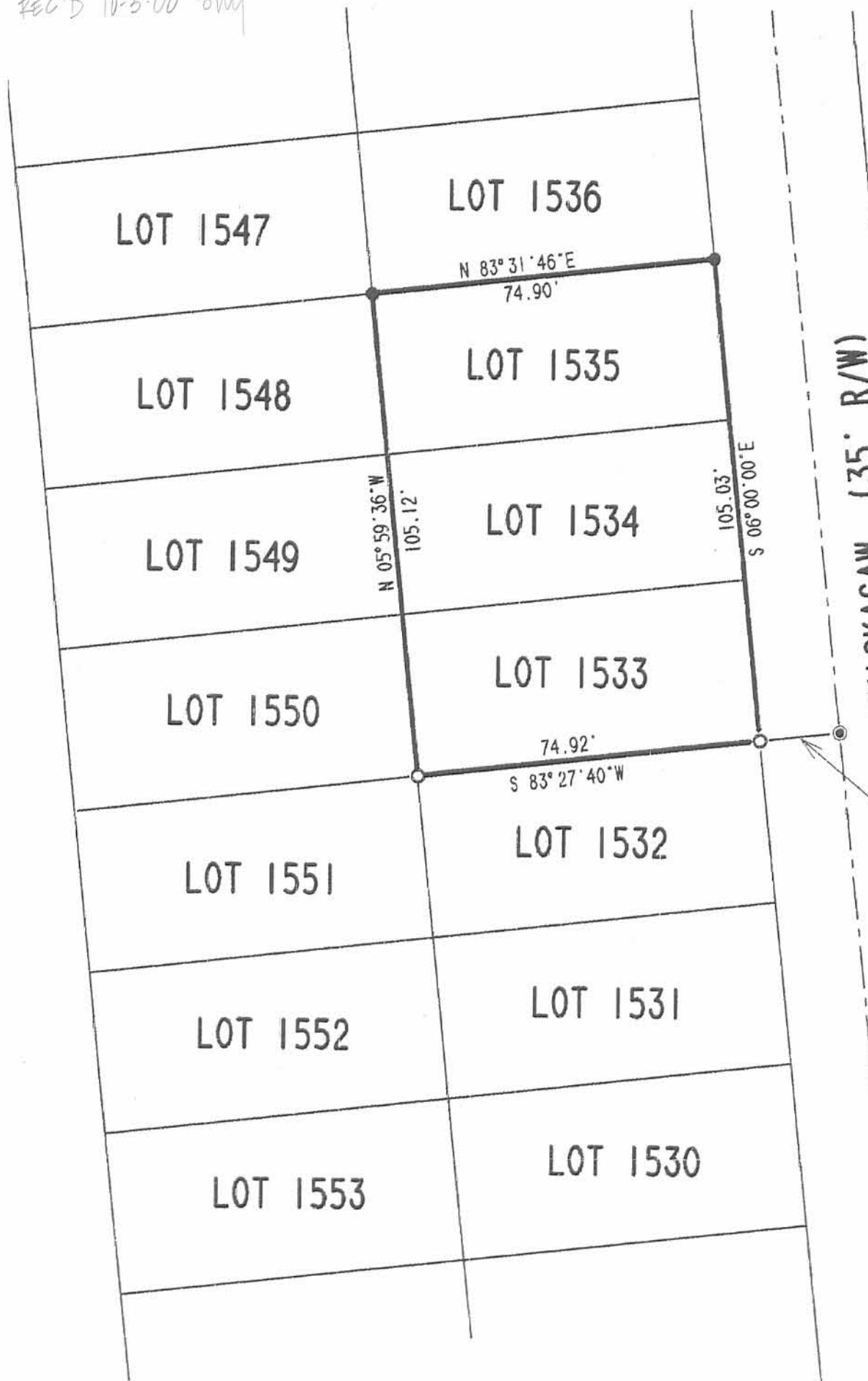
PATH - 35'



INDEXED ON MAP
9122

INDEXED ON MAP

REC'D 10-3-00 SVM

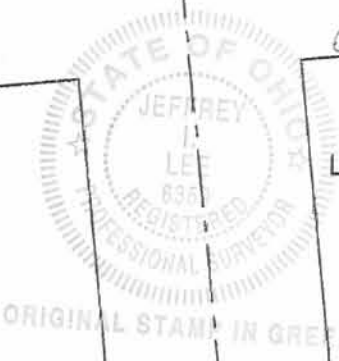


LEGEND:

- 5/8" IRON ROD SET
- ⊙ MAG NAIL SET
- 1/2" IRON PIPE FOUND
- ⊗ RAILROAD SPIKE FOUND

RETRACEMENT SURVEY
 LOTS 1533, 1534, AND 1535
 VIRGINIA MILITARY SURVEY 12276
 CHIPPEWA PARK ALLOTMENT NUMBER 3
 PLAT CABINET A, SLIDE 235
 STOKES TOWNSHIP
 LOGAN COUNTY, OHIO

EAGLE PATH (35' R/W)



SURVEYED BY:

JEFFREY I. LEE
 PROFESSIONAL SURVEYOR 6359
 AUGUST 14, 2000

REC 9/27/2000

COPYRIGHT 2000 BY:
LEE SURVEYING & MAPPING CO., INC.
 117 North Madriver Street
 BELLEFONTAINE, OHIO 43311
 (937) 593-7335

D 388ZA FIELDS

L-3020-3

2 WORKING DAYS
BEFORE YOU DIG
 CALL TOLL FREE **800-362-2764**
 OHIO UTILITIES PROTECTION SERVICE.

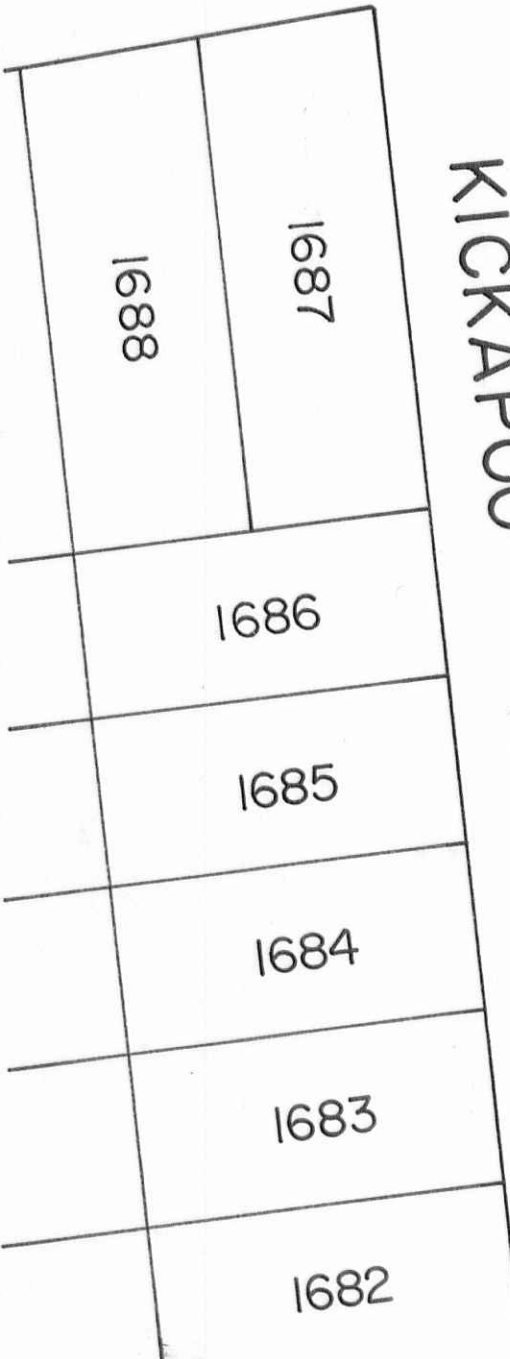
INDEXED ON MAP
 9/22

2P

ORIGINAL STAMP IN GREEN

S. R. No. 235

- 60'



KICKAPOO PATH

- 35'

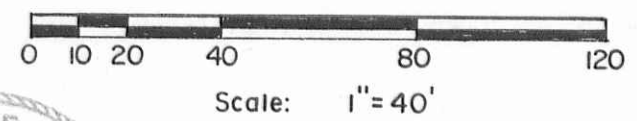


CHICAWASAW PATH

- 35'



CHIPPEWA PARK NO. 3



Reference:
Chippewa Park No. 3
Plat Cab. A Slide No. 235

Symbols:
● - 5/8" x 30" Rebars Fd.

MILLER APARTMENTS - Lots No. 1536 thru 1542,
Chippewa Park No. 3, Stokes Township,
Logan County, Ohio.

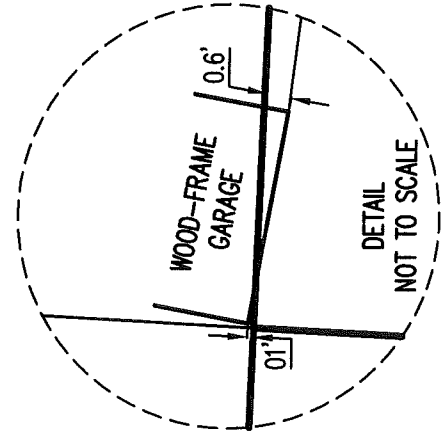
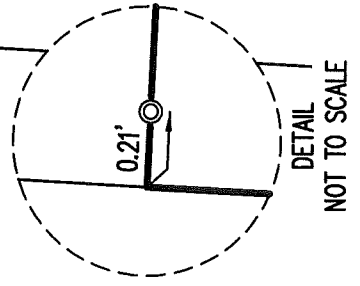
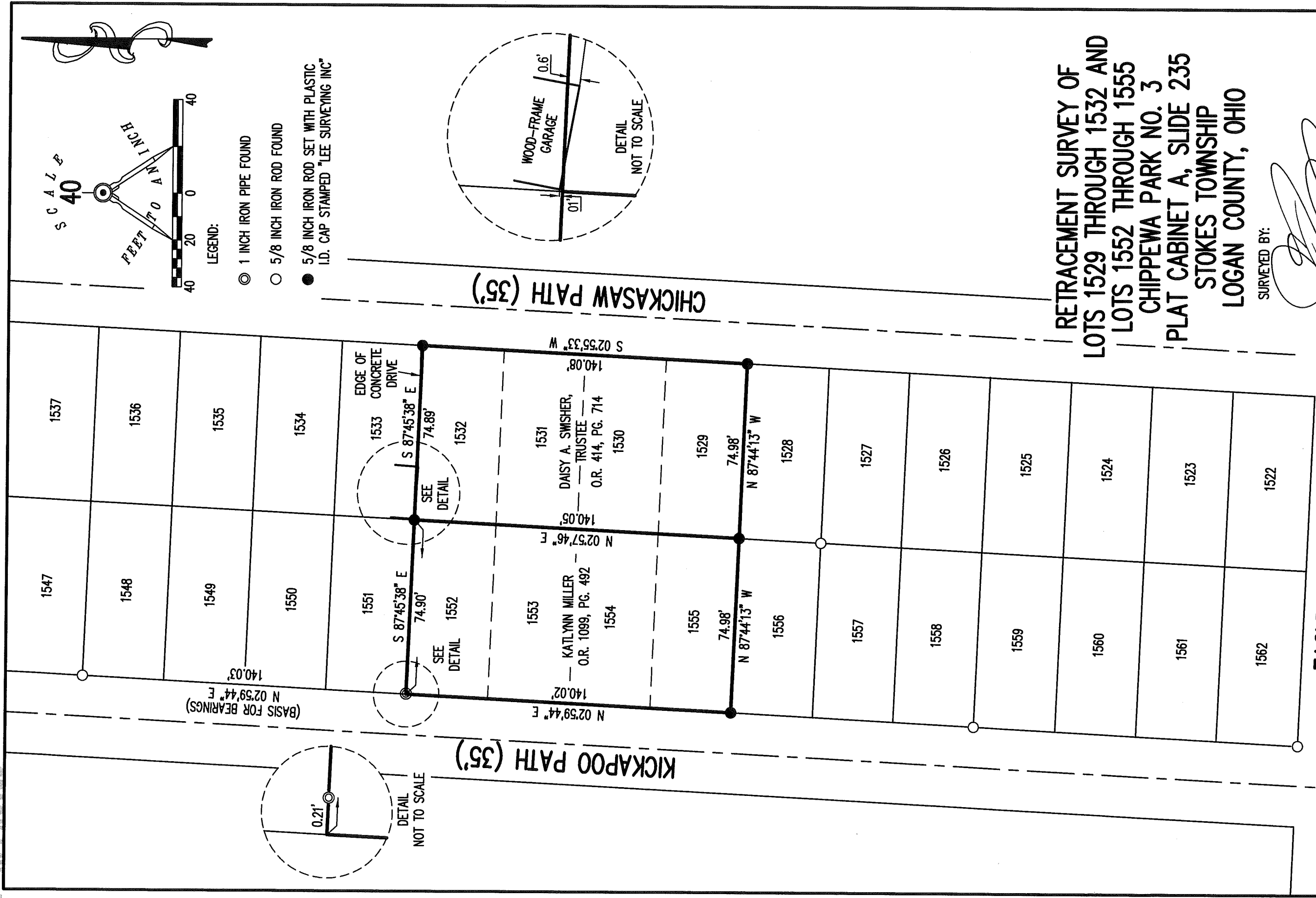
SCALE: 1" = 40'	APPROVED BY:	DRAWN BY DEG
DATE: 11-5-1998		REVISED

Daniel E. Gilbert
Daniel E. Gilbert, P.S.
Reg. Sur. No. 5402

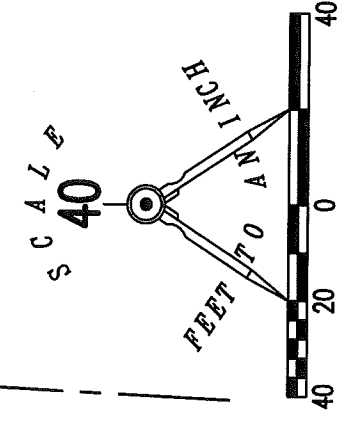
DRAWING NUMBER
098-035

S-497

APPROVED

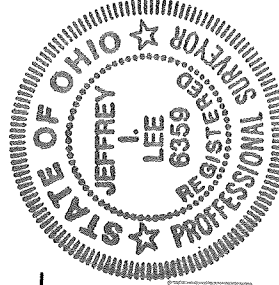


- LEGEND:
- 1 INCH IRON PIPE FOUND
 - 5/8 INCH IRON ROD FOUND
 - 5/8 INCH IRON ROD SET WITH PLASTIC I.D. CAP STAMPED "LEE SURVEYING INC"



RETRACEMENT SURVEY OF
 LOTS 1529 THROUGH 1532 AND
 LOTS 1552 THROUGH 1555
 CHIPPEWA PARK NO. 3
 PLAT CABINET A, SLIDE 235
 STOKES TOWNSHIP
 LOGAN COUNTY, OHIO

SURVEYED BY:
 JEFFREY L. LEE
 PROFESSIONAL SURVEYOR 6359
 AUGUST 28, 2017



EAGLE PATH (35')

THIS SURVEY WAS PREPARED IN THE ABSENCE OF
 A COMPLETE AND ACCURATE TITLE SEARCH AND
 DOES NOT GUARANTEE TITLE.

2 WORKING DAYS
BEFORE YOU DIG

CALL TOLL FREE **800-362-2764**
 OHIO UTILITIES PROTECTION SERVICE

INDEXED ON MAP
 9122.4P

COPYRIGHT 2017 BY:
LEE SURVEYING & MAPPING CO., INC.
 117 North Madriver Street
 BELLEFONTAINE, OHIO 43311
 (937) 593-7335
 WWW.LSMINC.US
 surveys@lsminc.us

ORIGINAL STAMP IN GREEN KSS D0817 30200817 L-3020-3