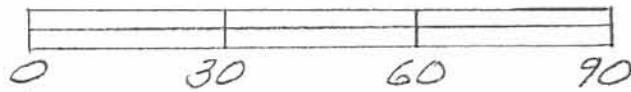


LEGEND:

- ⊙ = 1/2" IRON PIPE FOUND
- ⊗ = R.R. SPIKE FOUND
- = 5/8" IRON BAR FOUND
- = 5/8" IRON BAR SET

SURVEY OF LOTS 1754 & 1755  
 IN CHIPPEWA PARK NO 3,  
 V.M. 5.12276, STOKES TWP.,  
 LOGAN COUNTY, OHIO FOR  
 KATHIE GROOM.

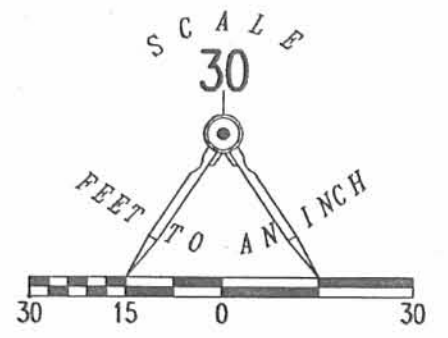
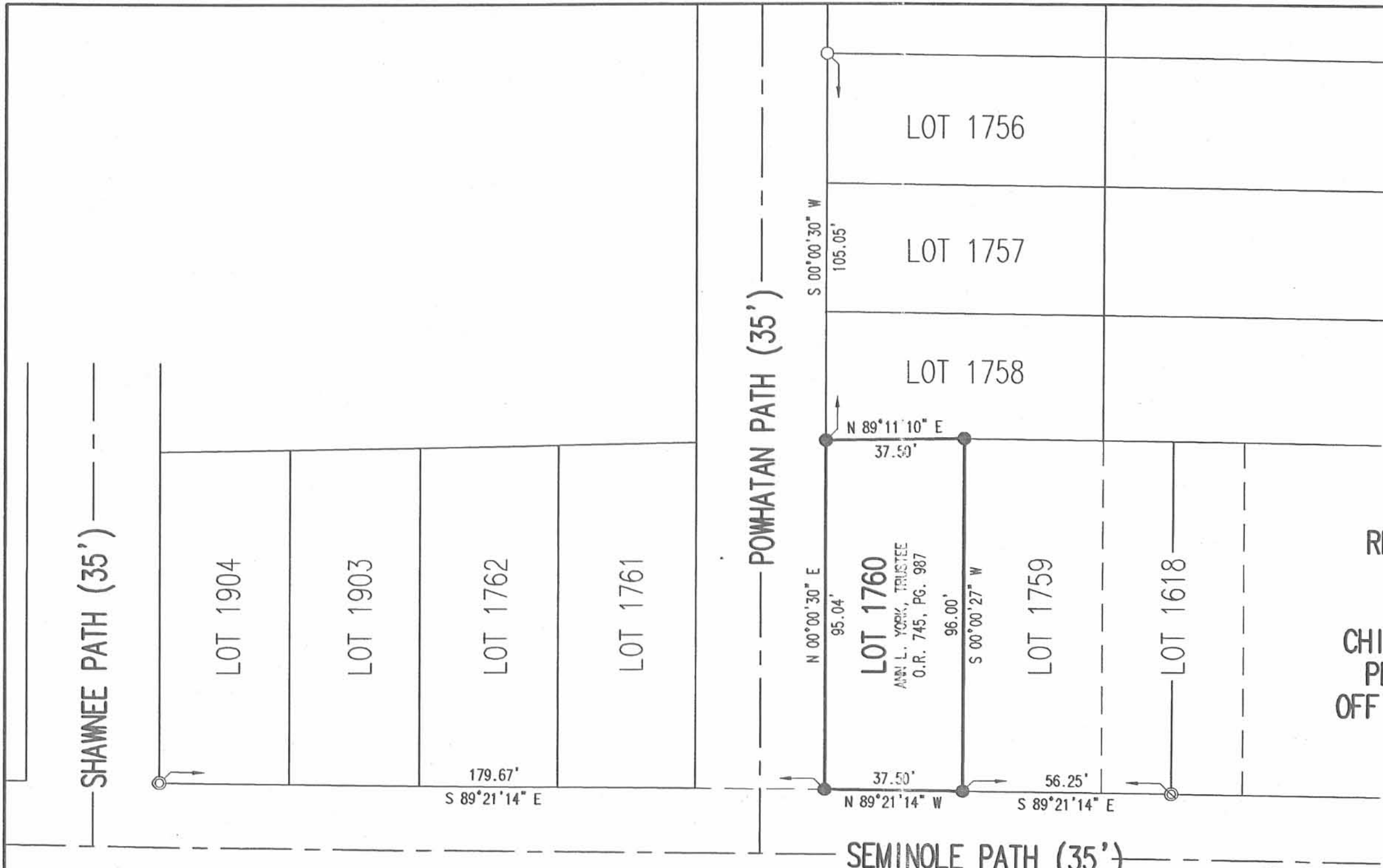
APRIL 30, 1997  
 SCALE: 1" = 30'



*Leslie H. Geeslin*  
 LESLIE H. GEESLIN  
 RUSHsylvania, OHIO  
 PH 937-468-2793

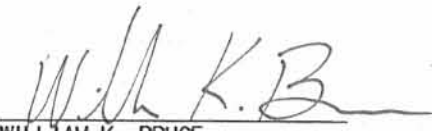
INDEXED ON MAP  
 9127 IP

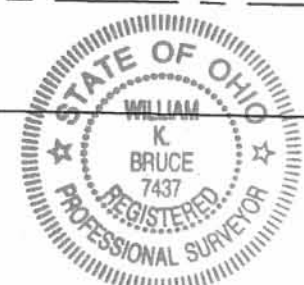
REV'D 5-26-05 EML/DAL



- LEGEND:
- ⊙ 3/4 INCH IRON PIPE FOUND
  - ⊗ 1-1/2 INCH IRON PIPE FOUND
  - 5/8 INCH IRON ROD FOUND
  - 5/8 INCH IRON ROD SET

RETRACEMENT SURVEY OF THE  
 ANN L. YORK, TRUSTEE  
 LOT NUMBER 1760  
 CHIPPEWA PARK ADDITION NO. 3  
 PLAT CABINET A, SLIDE 235  
 OFFICIAL RECORD 745, PAGE 987  
 STOKES TOWNSHIP  
 LOGAN COUNTY, OHIO

SURVEYED BY:  
  
 WILLIAM K. BRUCE  
 PROFESSIONAL SURVEYOR 7437  
 MAY 24, 2005



ORIGINAL STAMP IN GREEN

COPYRIGHT 2005 BY:  
 LEE SURVEYING & MAPPING CO., INC.  
 117 North Madriver Street  
 BELLEFONTAINE, OHIO 43311  
 (937) 593-7335  
 KSR D0505 4026055 L-4026-3

2 WORKING DAYS  
**BEFORE YOU DIG**  
 CALL TOLL FREE **800-362-2764**  
 OHIO UTILITIES PROTECTION SERVICE

INDEXED ON MAP  
 9127

2P