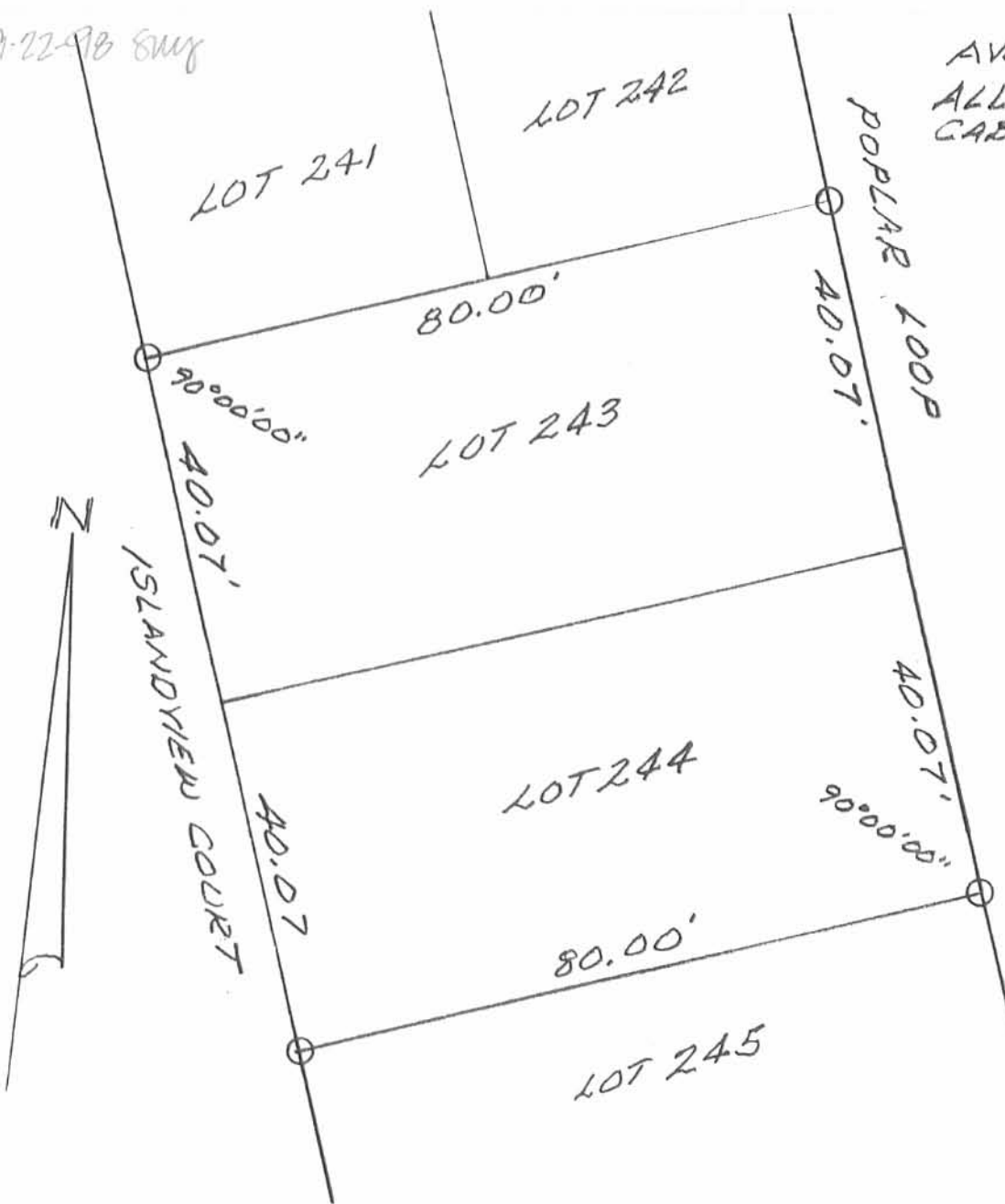
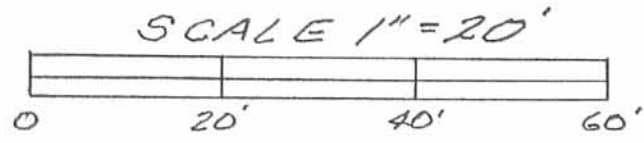


REC'D 9-22-98 8my

AVONDALE PARK
ALLOTMENT NO. 3
CABINET A SLIDE 241



LEGEND:
 ○ = 5/8 INCH IRON
 BAR SET



SURVEY OF LOTS 243 AND 244 OF
 AVONDALE PARK IN VIRGINIA MILITARY
 SURVEY 12276, STOKES TOWNSHIP,
 LOGAN COUNTY, OHIO FOR
 LARRY FINCH ON SEPTEMBER 16, 1998.



INDEXED ON MAP
 9222

1P

Leslie H. Geeslin
 LESLIE H. GEESLIN
 RUSHLYANIA, OHIO
 (937) 468-2793