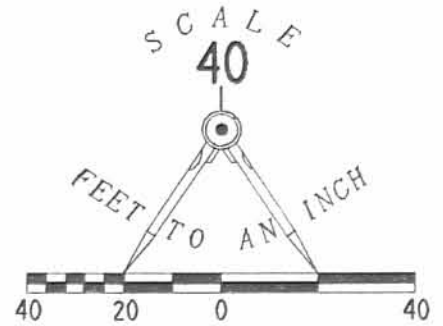
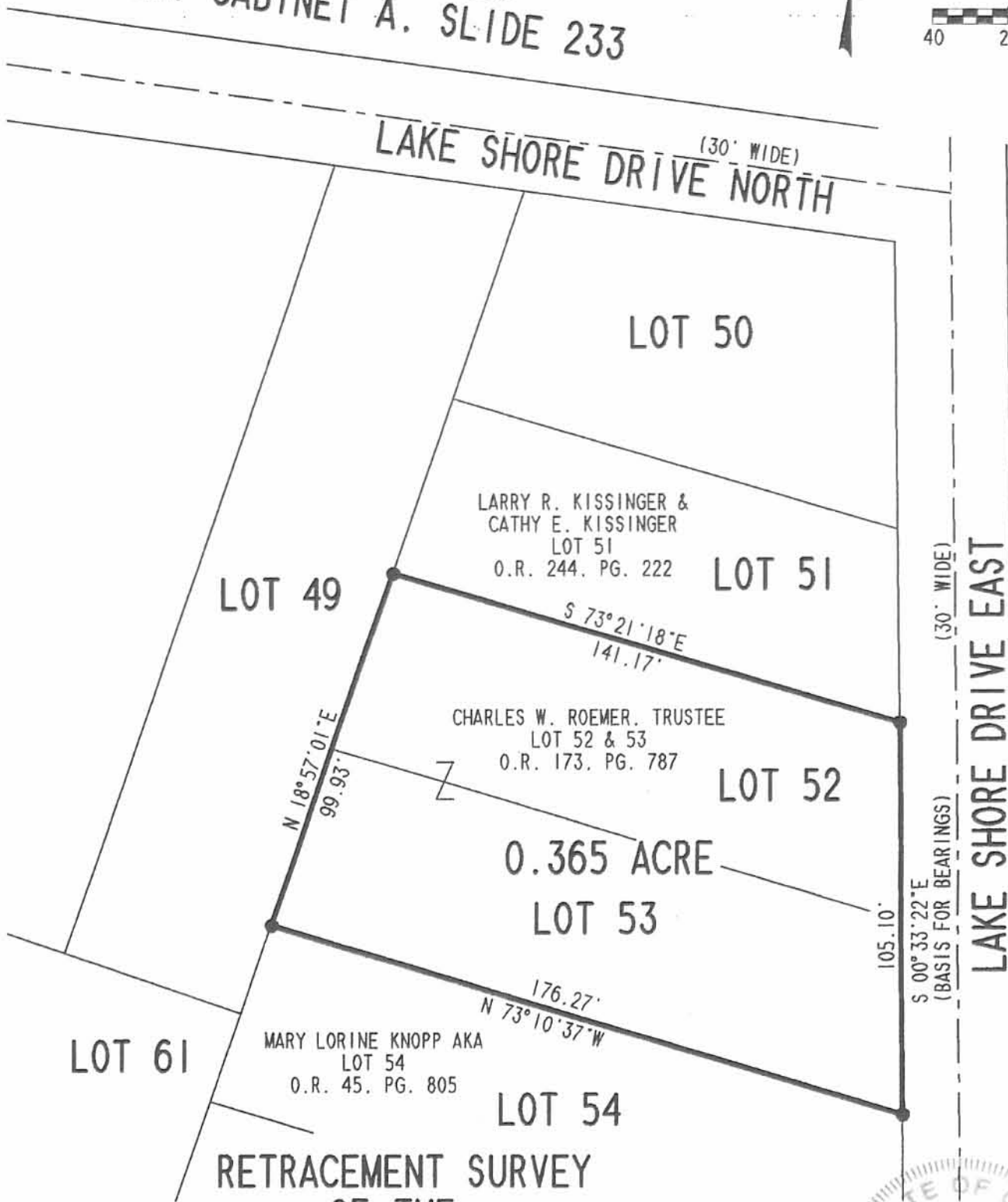


SHAWNEE ISLAND  
 PLAT CABINET A. SLIDE 233



LEGEND

● 5/8" IRON ROD SET



RETRACEMENT SURVEY  
 OF THE  
 CHARLES W. ROEMER  
 LOTS 52 & 53  
 SHAWNEE ISLAND  
 PLAT CABINET A, SLIDE 233  
 OFFICIAL RECORD 173, PAGE 787  
 VIRGINIA MILITARY SURVEY 12276  
 STOKES TOWNSHIP  
 LOGAN COUNTY, OHIO



ORIGINAL STAMP IN GREEN

SURVEYED BY:

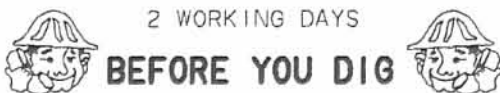
*Jeffrey I. Lee*  
 JEFFREY I. LEE  
 PROFESSIONAL SURVEYOR 6359  
 JULY 27, 1999

COPYRIGHT 1999 BY:

LEE SURVEYING & MAPPING CO., INC.

117 North Madriver Street  
 BELLEFONTAINE, OHIO 43311  
 (937) 593-7335

D-350 SMITH778 L-2778-4



2 WORKING DAYS

BEFORE YOU DIG

CALL TOLL FREE 800-362-2764

OHIO UTILITIES PROTECTION SERVICE.

INDEXED ON MAP  
 926A 1P