

REC'D 11-27-00 SMJ OK ✓

Lee Surveying and Mapping Co., Inc.

Land Surveys • Topography • Subdivisions • Construction Layout

117 N. Madriver St.
Bellefontaine OH 43311



Phone: (937) 593-7335
Fax: (937) 593-7444

WILDERMUTH 109.722 ACRES

Lying in Sections 4 and 5, Town 7, Range 8, Stokes Township, Logan County, Ohio.

Being out of the Shawn J. Wildermuth and James Dean Wildermuth original 160 acre, original 151.26 acre and original 15.74 acre tracts as deeded and described in Official Record 288, Page 34 of the Logan County Records of Deeds and being more particularly described as follows:

Beginning at a 5/8 inch iron rod found in a monument box at the intersection of the center-line of County Highway 53 and the south line of Stokes Township.

THENCE, with the center-line of County Highway 53 (40 feet wide), N 1°-30'-00" E, a distance of 2669.62 feet to a MAG nail set at THE TRUE POINT OF BEGINNING.

THENCE, continuing with the center-line of County Highway 53, N 1°-30'-00" E, a distance of 71.24 feet to a MAG nail set.

THENCE, S 89°-06'-57" E, a distance of 251.89 feet to a 5/8 inch iron rod set, passing a 5/8 inch iron rod set at 20.00 feet.

THENCE, N 41°-57'-59" E, a distance of 313.15 feet to a 5/8 inch iron rod set.

THENCE, N 52°-19'-54" E, a distance of 296.79 feet to a 5/8 inch iron rod set.

THENCE, N 66°-02'-07" E, a distance of 286.11 feet to a 5/8 inch iron rod set.

THENCE, N 74°-24'-40" E, a distance of 320.01 feet to a 5/8 inch iron rod set.

THENCE, N 79°-17'-02" E, a distance of 273.47 feet to a 5/8 inch iron rod set.

THENCE, N 89°-49'-23" E, a distance of 1118.39 feet to a 5/8 inch iron rod set.

THENCE, N 47°-26'-51" E, a distance of 269.54 feet to a 5/8 inch iron rod set.

THENCE, N 65°-16'-47" E, a distance of 385.64 feet to a 5/8 inch iron rod set.

THENCE, S 81°-48'-22" E, a distance of 381.19 feet to a 5/8 inch iron rod set.

THENCE, S 79°-30'-09" E, a distance of 360.16 feet to a 5/8 inch iron rod set.

THENCE, N 85°-47'-26" E, a distance of 634.89 feet to a 5/8 inch iron rod set.

THENCE, S 82°-29'-04" E, a distance of 377.96 feet to a 5/8 inch iron rod set.

THENCE, S 50°-06'-29" E, a distance of 109.83 feet to a 5/8 inch iron rod set.

THENCE, S 52°-39'-59" E, a distance of 762.10 feet to a 5/8 inch iron rod set.

THENCE, S 44°-40'-41" E, a distance of 273.48 to a point in the water at the center of the Muchinippi Creek, passing a 5/8 inch iron rod set at 238.23 feet.

THENCE, with the center-line of the said Muchinippi Creek and the west line of the Beulah Davis 129.71 acre tract (O.R. 323, Pg. 186), following three courses:

S 11°-39'-46" W, a distance of 103.17 feet to a point in the water, referenced by a 5/8 inch iron rod set bearing N 77°-52'-43" W, a distance of 24.31 feet.

INDEXED ON MAP
9343 ID-1

Lee Surveying and Mapping Co., Inc.

Land Surveys • Topography • Subdivisions • Construction Layout

117 N. Madriver St.
Bellefontaine OH 43311



Phone: (937) 593-7335
Fax: (937) 593-7444

S 11°-36'-38" W, a distance of 139.18 feet to a point in the water, referenced by a 5/8 inch iron rod set bearing N 78°-26'-19" W, a distance of 29.00 feet.

S 14°-27'-18" W, a distance of 146.26 feet to a point in the water on the south line of Section 4.

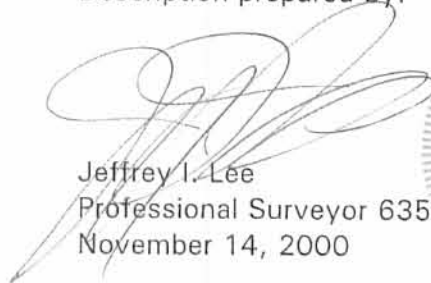
THENCE, with the south line of Section 4 and the north lines of the said 129.71 acre tract, the Leona C. Wildermuth and Norman J. Wildermuth, Trustees, or Their Successors in Trust, Under the Leona C. Wildermuth Living Trust 40 acre tract (O.R. 384, Pg. 485, Parcel II, Tract V), the Leona C. Wildermuth and Norman J. Wildermuth, Trustees, or Their Successors in Trust, Under the Leona C. Wildermuth Living Trust 40 acre tract (O.R. 384, Pg. 485, Parcel II, Tract III) and the Shawn J. Wildermuth and James Dean Wildermuth 40 acre tract (O.R. 285, Pg. 496, Tract II), N 89°-00'-55" W, a distance of 3110.28 feet to a 5/8 inch iron rod set at the southwest corner of Section 4, passing a 5/8 inch iron rod set at 30.00 feet.

THENCE, with the south line of Section 5 and the north line of the Shawn J. Wildermuth and James Dean Wildermuth 80 acre tract (O.R. 285, Pg. 496, Tract I), N 87°-57'-28" W, a distance of 2632.00 feet to the place of beginning, passing a 5/8 inch iron rod set at 2612.00 feet.

Containing 109.772 acres of which 0.033 acre is within the highway right-of-way. 72.819 acres are in Section 4, and 36.953 acres are in Section 5.

The basis for bearings is the center-line of County Highway 53 being N 1°-30'-00" E, and all other bearings are from angles and distances measured in a field survey by Lee Surveying and Mapping Co., Inc. on October 23, 2000.

Description prepared by:

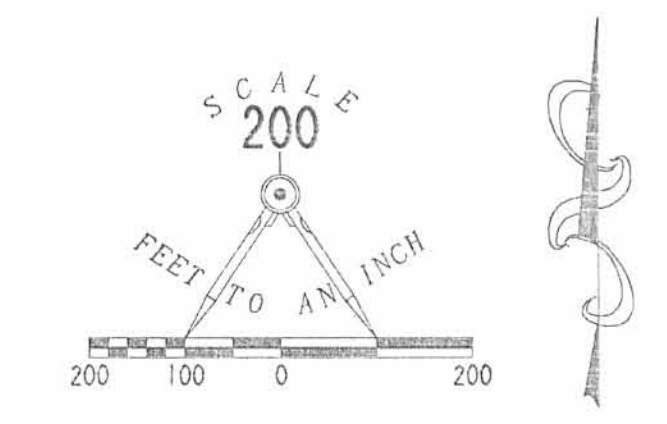

Jeffrey I. Lee
Professional Surveyor 6359
November 14, 2000



ORIGINAL STAMP IN GREEN

L-2866

INDEXED ON MAP
9343 1D-2

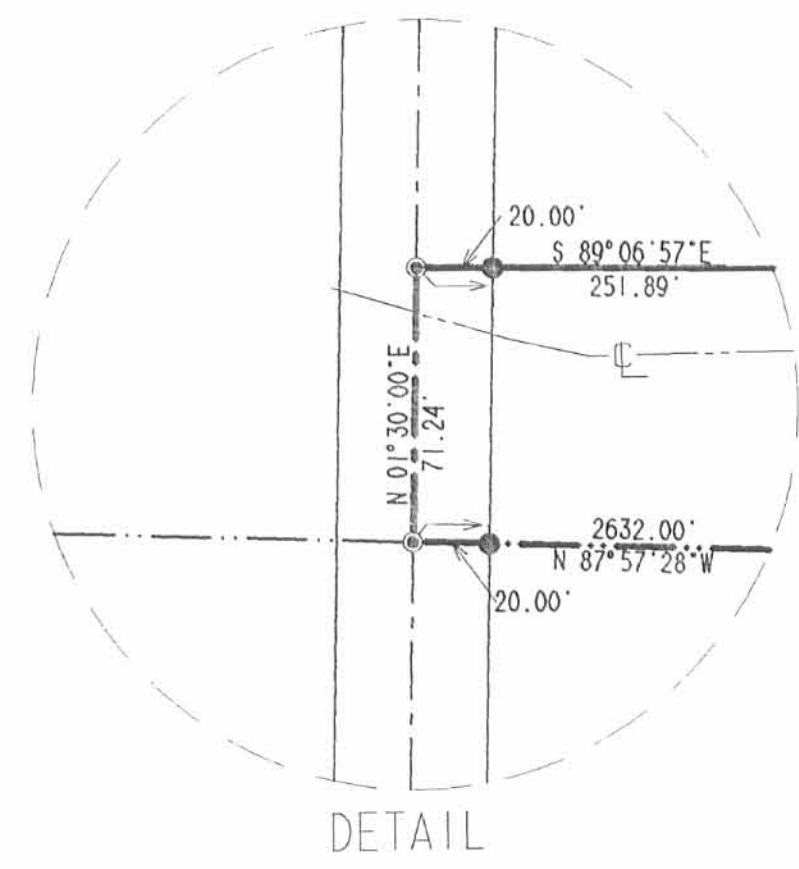


1/4 SECTION LINE

- LEGEND:
- 5/8 INCH IRON ROD SET
 - ⊙ MAG NAIL SET
 - ⊠ 5/8 INCH IRON ROD FOUND IN A MONUMENT BOX



5 4
8 9



SURVEY OF 109.772 ACRES OUT OF THE
 SHAWN J. WILDERMUTH AND JAMES DEAN WILDERMUTH
 ORIGINAL 160.000 ACRE, ORIGINAL 151.260 ACRE AND ORIGINAL 15.470 ACRE TRACTS
 OFFICIAL RECORD 288, PAGE 34
 SECTIONS 4 AND 5, TOWN 7, RANGE 8
 STOKES TOWNSHIP
 LOGAN COUNTY, OHIO

SHAWN J. WILDERMUTH
 AND JAMES DEAN WILDERMUTH
 80 ACRES
 O.R. 285, PG. 496
 TRACT I

SHAWN J. WILDERMUTH
 AND JAMES DEAN WILDERMUTH
 40 ACRES
 O.R. 285, PG. 496
 TRACT II

LEONA C. WILDERMUTH
 AND NORMAN J. WILDERMUTH, TRUSTEES
 OR THEIR SUCCESSORS IN TRUST,
 UNDER THE LEONA C. WILDERMUTH LIVING TRUST
 40 ACRES
 O.R. 384, PG. 485
 PARCEL 11, TRACT III

LEONA C. WILDERMUTH
 AND NORMAN J. WILDERMUTH, TRUSTEES
 OR THEIR SUCCESSORS IN TRUST,
 UNDER THE LEONA C. WILDERMUTH LIVING TRUST
 40 ACRES
 O.R. 384, PG. 485
 PARCEL 11, TRACT V

BEULAH DAVIS
 129.71 ACRES
 O.R. 323, PG. 186

COUNTY HIGHWAY 53 (40' R/W)

STOKES TOWNSHIP
BLOOMFIELD TOWNSHIP

2 WORKING DAYS
BEFORE YOU DIG
 CALL TOLL FREE 800-362-2764
 OHIO UTILITIES PROTECTION SERVICE.

INDEXED ON MAP
9343 IP



SURVEYED BY:
 JEFFREY L. LEE
 PROFESSIONAL SURVEYOR 6359
 OCTOBER 23, 2000
 COPYRIGHT 2000 BY:
 LEE SURVEYING & MAPPING CO., INC.
 117 North Madison Street
 BELLEFONTAINE, OHIO 43311
 (937) 593-7335
 D-390 SWILD L-2866-1

4-4-19



Permanent Easement for Road Maintenance Purposes

Situated in the SE quarter of Section 5, T. 7 S., R. 8 E., Stokes Township, Logan County, Ohio.

Said easement being part of James Dean Wildermuth etal's 217.278 acre tract (O.R. Vol. 548, pg. 505) which has been assigned permanent parcel number 43-030-00-00-033-000. Said permanent easement for road maintenance purposes being a 10 foot wide strip of real estate which is more particularly described as follows:

Beginning for reference at a 5/8 inch diameter capped iron bar, stamped "Logan County Engineer", found in a monument box on the centerline of Logan County Road No. 53. Said iron bar being a P.I. on the South line of Stokes Township at CR 53 centerline station 106+39.50 as shown on page 73 in Logan County Engineer's Field Book No. 711.

Thence with the centerline of CR 53, N 1° - 10' - 11" E., 2669.41 feet to a 1/2 inch diameter iron bar found on the South line of aforesaid Section 5. Said iron bar being at CR 53 centerline station 133+08.91.

Thence continuing with the centerline of CR 53, N. 1° - 09' - 22" E., 71.26 feet to a point. Said point being the NW corner of Bru - Mar Farms, LLC's 109.772 acre tract 1 (O.R. Vol. 1311, pg. 680). A mag nail found bears N. 89° - 26' - 17" W., 0.29 feet from said point (Reference file - 9343).

Thence with Bru - Mar Farm's North property line, S. 89° - 26' - 17" E., 20.00 feet to a point on the existing East right of way line of CR 53. Said point being the true point of beginning for this easement description.

Thence with the existing East right of way line of CR 53, N. 1° - 09' - 22" E., 23.45 feet to a point.

Thence perpendicular to the centerline of CR 53, S. 88° - 50' - 38" E., 10.00 feet to a point.

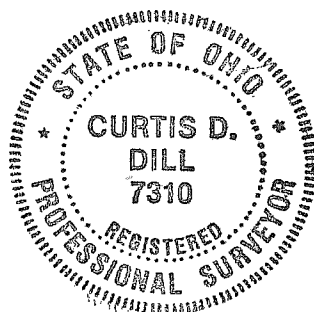
Thence parallel to the centerline of CR 53, S. 1° - 09' - 22" W., 23.35 feet to a point on the North property line of aforesaid Bru - Mar Farms.

Thence with Bru - Mar Farms North property line, N. 89° - 26' - 17" W., 10.00 feet to the point of beginning.

The above described permanent easement for road maintenance purposes encompasses 234 square feet or 0.005 acre more or less.

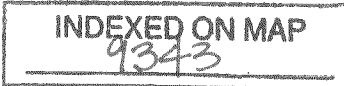
Bearings are based on the grid of the North Zone of the Ohio State Plane Coordinate System.

This easement description was prepared by the Logan County Engineers Office from an actual field survey performed on 26 February 2019.



Curtis D. Dill

Curtis D. Dill
Deputy Surveyor
Logan County Engineers Office
Registered Surveyor No. 7310



4-4-19



Permanent Easement for Road Maintenance Purposes

Situated in the SE quarter of Section 5, T. 7 S., R. 8 E., Stokes Township, Logan County, Ohio.

Said easement being part of Bru-Mar Farms, LLC's 109.772 acre tract 1 (O.R. Vol. 1311, pg. 680) which has been assigned permanent parcel number 43-030-00-00-033-001. Said permanent easement for road maintenance purposes being a 10 foot wide strip of real estate which is more particularly described as follows:

Beginning for reference at a 5/8 inch diameter capped iron bar, stamped "Logan County Engineer", found in a monument box on the centerline of Logan County Road No. 53. Said iron bar being a P.I. on the South line of Stokes Township at CR 53 centerline station 106+39.50 as shown on page 73 in Logan County Engineers Field Book No. 711.

Thence with the centerline of CR 53, N. 1° - 10' - 11" E., 2669.41 feet to a 1/2 inch diameter iron bar found on the South line of aforesaid section 5. Said iron bar being at CR 53 centerline station 133+08.91.

Thence continuing with the centerline of CR 53, N. 1° - 09' - 22" E., 71.26 feet to a point. Said point being the SW corner of James Dean Wildermuth et al's 217.278 acre tract (O.R. Vol. 548, pg. 505). A mag nail found bears N. 89° - 26' - 17" W., 0.29 feet from said point (Reference File - 9343).

Thence with Wildermuth's South property line, S. 89° - 26' - 17" E., 20.00 feet to a point on the existing East right of way line of CR 53. Said point being the true point of beginning for this easement description.

Thence continuing with Wildermuth's South property line, S. 89° - 26' - 17" E., 10.00 feet to a point.

Thence parallel with the centerline of CR 53, S. 1° - 09' - 22" W., 46.65 feet to a point.

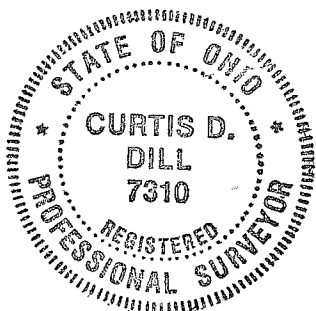
Thence perpendicular to the centerline of CR 53, N. 88° - 50' - 38" W., 10.00 feet to a point on the existing East right of way line of CR 53.

Thence with the existing East right of way line of CR 53, N. 1° - 09' - 22" E., 46.55 feet to the point of beginning.

The above described permanent easement for road maintenance purposes encompasses 466 square feet or 0.011 acre more or less.

Bearings are based on the grid of the North zone of the Ohio State Plane Coordinate System.

This easement description was prepared by the Logan County Engineers Office from an actual field survey performed on 26 February 2019.



Curtis D. Dill

Curtis D. Dill
Deputy Surveyor
Logan County Engineers Office
Registered Surveyor No. 7310

INDEXED ON MAP
9343

Permanent Easement for Road Maintenance Purposes

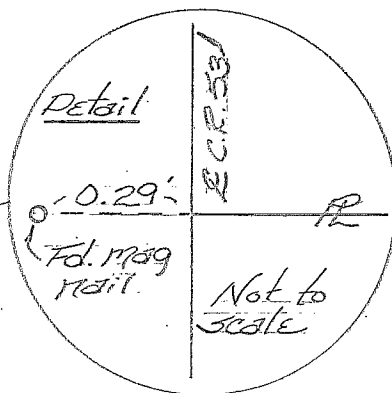
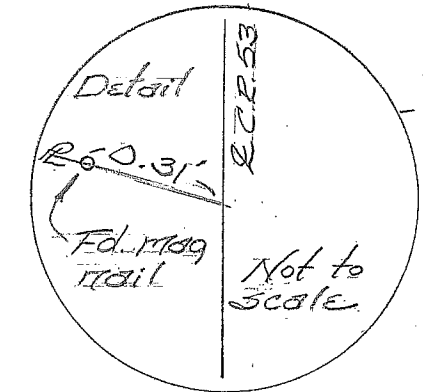
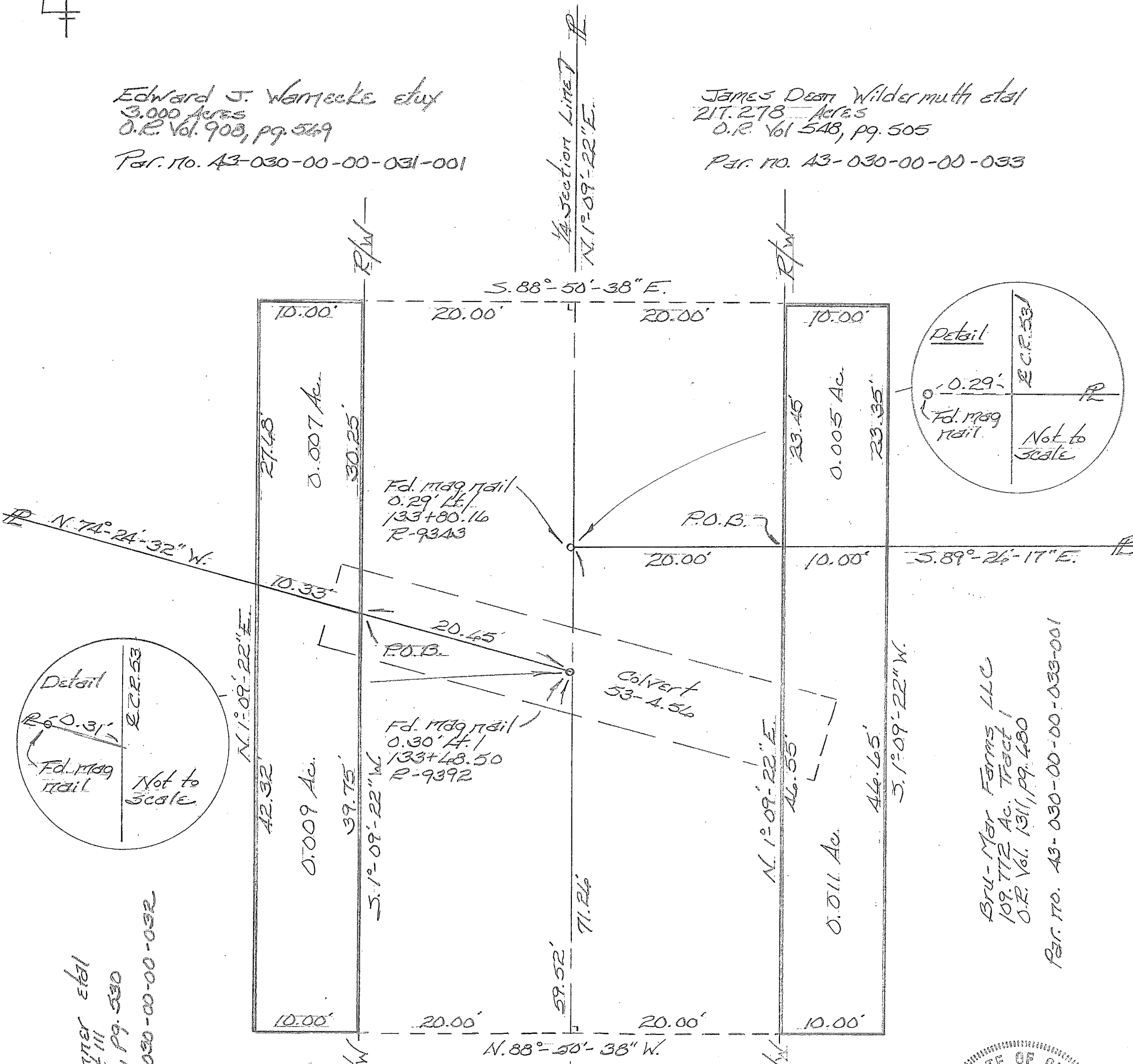
4-4-19

APPROVED

Section 5, T. 75., R. 8 E.
Stokes Township
Logan County, Ohio
26 February 2019

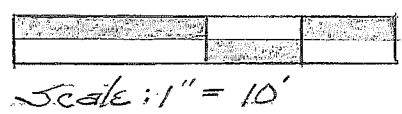
Edward J. Wamsche et ux
3.000 Acres
O.R. Vol. 908, pg. 549
Par. No. 43-030-00-00-031-001

James Dean Wildermuth et al
217.278 Acres
O.R. Vol 548, pg. 505
Par. No. 43-030-00-00-033

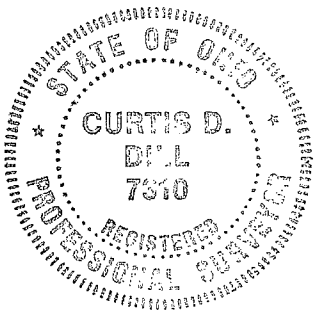


Jay J. Winner et al
4.166 Acres Tract III
O.R. Vol. 786, pg. 530
Par. No. 43-030-00-00-032

Brn-Mar Farms LLC
109.772 Ac. Tract I
O.R. Vol. 1311, pg. 480
Par. No. 43-030-00-00-033-001



INDEXED ON MAP
9343



Sec. 5, T. 75., R. 8 E.
Sec. 8, T. 75., R. 8 E.

The cap on the iron bar found in the monument box at C.R. 53 centerline station 106+39.50 is stamped "Logan County Engineer".

Bearings are based on the grid of the North Zone of the Ohio State Plane Coordinate System.

This easement description was prepared by the Logan County Engineers Office from an actual field survey performed on 26 February 2019.

P.I.
133+08.91
Fd. 1/2" iron bar
0°-00'-29" Lt.

P.I.
106+39.50
Fd. 5/8" 6 spd. iron bar
F. Bk. # 711, pg. 73

Curtis D. Dill
Curtis D. Dill
Deputy Surveyor
Logan County Engineers Office
Registered Surveyor No. 7310

Stokes Twp.
Bloomfield Twp.